

# **WA3009 Introduction to Angular 10 Programming**

## **Classroom Setup Guide**

**Web Age Solutions Inc.**

## Table of Contents

Part 1 - Minimum Hardware Requirements.....	3
Part 2 - Minimum Software Requirements.....	3
Part 3 - Software Provided.....	3
Part 4 - Instructions.....	4
Part 5 - Installing Node.js 12.18.3.....	4
Part 6 - Installing Git 2.27.....	6
Part 7 - Installing Visual Studio Code.....	7
Part 8 - Summary.....	15

## **Part 1 - Minimum Hardware Requirements**

- Dual Core CPU or better 64 bits
- 4GB RAM minimum
- 20 GB in the hard disk
- Internet connection

## **Part 2 - Minimum Software Requirements**

- Windows OS: Windows 7 / 10, Windows Server 2012.
- Latest Google Chrome browser
- Latest Visual Studio Code
- Nodejs \*
- Git \*

\* - indicates software provided as part of the courseware.

## **Part 3 - Software Provided**

List of ZIP files required for this course and used in next steps on this document:

**WA3009\_REL\_1\_0.zip**

Send an email to [support@webagesolutions.com](mailto:support@webagesolutions.com) in order to obtain a copy of the software for this course if you haven't receive it yet.

All other software listed under Minimum Software Requirements is either commercially licensed software that you must provide or software that is freely available off the Internet.

## Part 4 - Instructions

\_\_1. Make sure the account that you are using to install the software has administrative privileges and the student using this machine will have the same rights.

\_\_2. Extract the **ZIP** file to C:\

\_\_3. Review that the following folders were created:

- C:\LabFiles\
- C:\Software\

\_\_4. Review that the following file was created:

- C:\Software\node-v12.18.3-x64.msi
- C:\Software\Git-2.27.0-64-bit.exe

\_\_5. Make sure the C:\Software and C:\LabFiles folders are **writable** by the students, if they are read-only then the software won't work and students will have problems during the labs.

\_\_6. Download and install the latest Google Chrome browser from:

<https://www.google.com/intl/en/chrome/browser>

## Part 5 - Installing Node.js 12.18.3

\_\_1. Open C:\Software\

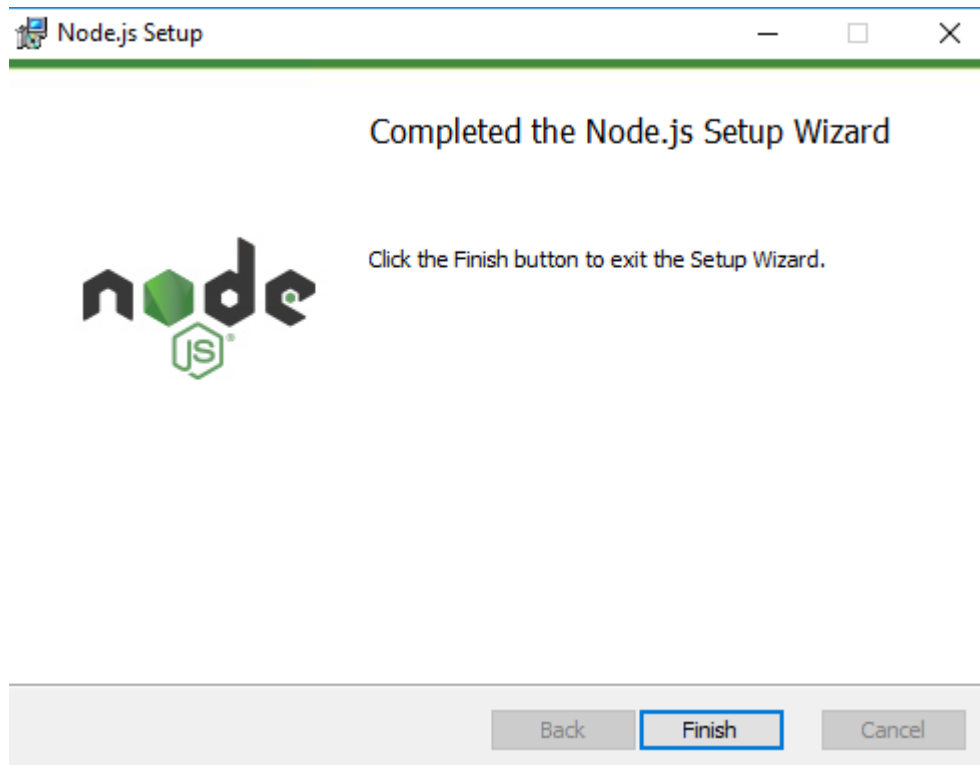
\_\_2. Double click on **node-v12.18.3-x64.msi** to begin installation.

\_\_3. In the Welcome page, click **Next**.

\_\_4. Check **I accept the terms...** and click **Next**.

\_\_5. Accept default destination folder and click **Next**.

- \_\_6. Accept default Custom Setup selection and click **Next**.
- \_\_7. Accept default tools selection and click **Next**.
- \_\_8. Click **Install**.
- \_\_9. A popup window may open asking to install the software. Click Yes to continue.
- \_\_10. Click **Finish**.



### Installation verification of Node.js

- \_\_1. Open a command prompt window.
- \_\_2. Enter the command:  
  
`node --version`
- \_\_3. Make sure that you see **12.18.3** as the output.

\_\_4. Close all.

## Part 6 - Installing Git 2.27

**IMPORTANT: Setup is easy but you need to make sure you do the change in Step 8.**

\_\_1. From the C:\Software\ directory run the following file:

**Git-2.27.0-64-bit.exe**

\_\_2. You may need to allow the program to run.

\_\_3. In the Information page, click **Next**.

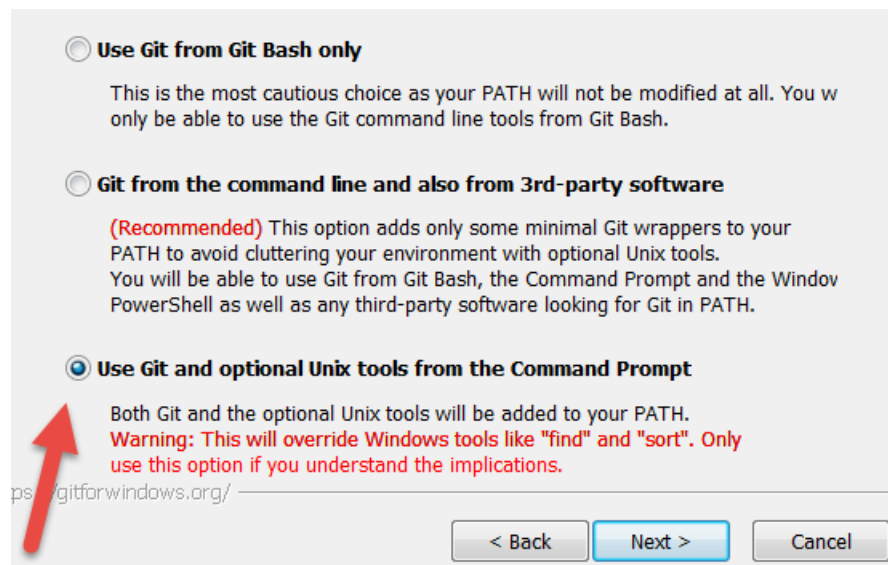
\_\_4. In the Select Destination Location page, leave defaults and click **Next**.

\_\_5. In the Select Components page, leave defaults and click **Next**.

\_\_6. In the Select Start Menu Folder page, leave defaults and click **Next**.

\_\_7. In the Choosing the default editor used by Git page, leave defaults and click **Next**.

\_\_8. In the Adjusting your PATH environments page, select **Use Git and Optional Unix tools from the Windows Command Prompt**.

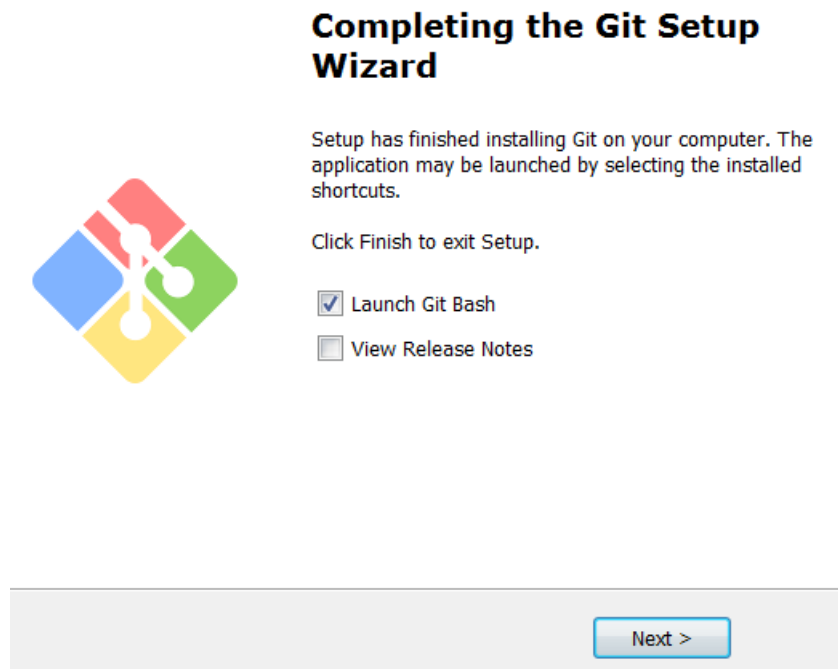


\_\_9. Make sure you select the 3<sup>rd</sup> option as shown above and then click **Next**.

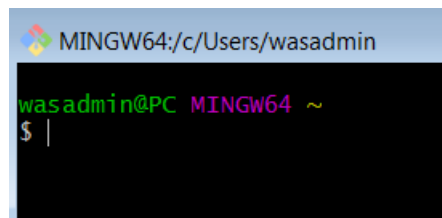
\_\_10. Press **Next** in all the following windows to select the default.

\_\_11. After many windows, click **Install**.

\_\_12. Check the box for **Launch Git Bash** and click **Next**.



\_\_13. You will see a Terminal Git window like below.



\_\_14. Close all.

You have completed GIT installation.

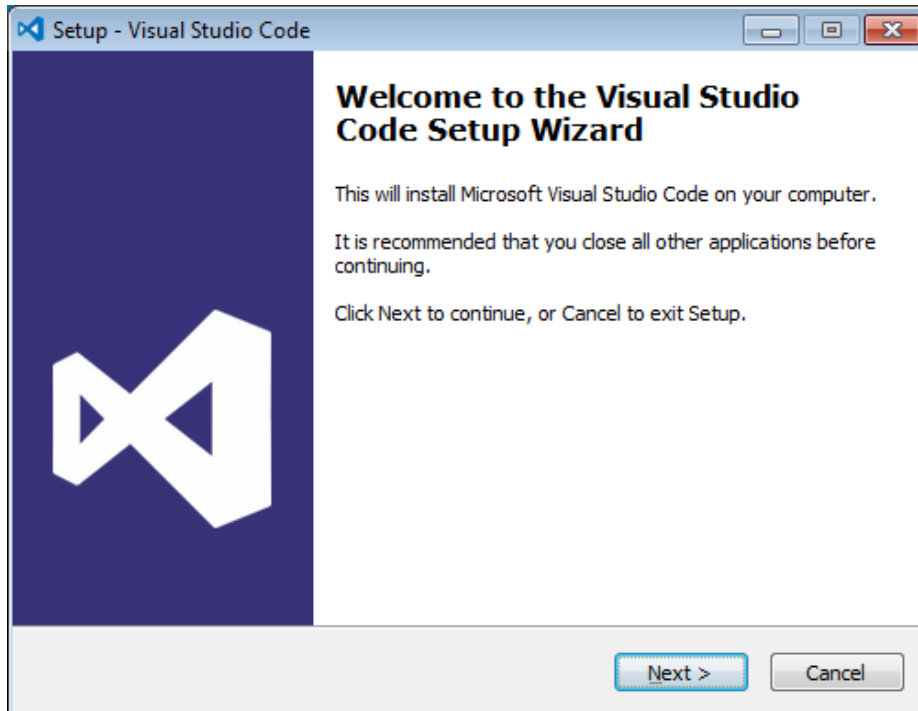
## Part 7 - Installing Visual Studio Code

\_\_1. Download the latest VScode for Windows (stable build installer) from the following site:

<https://code.visualstudio.com/>

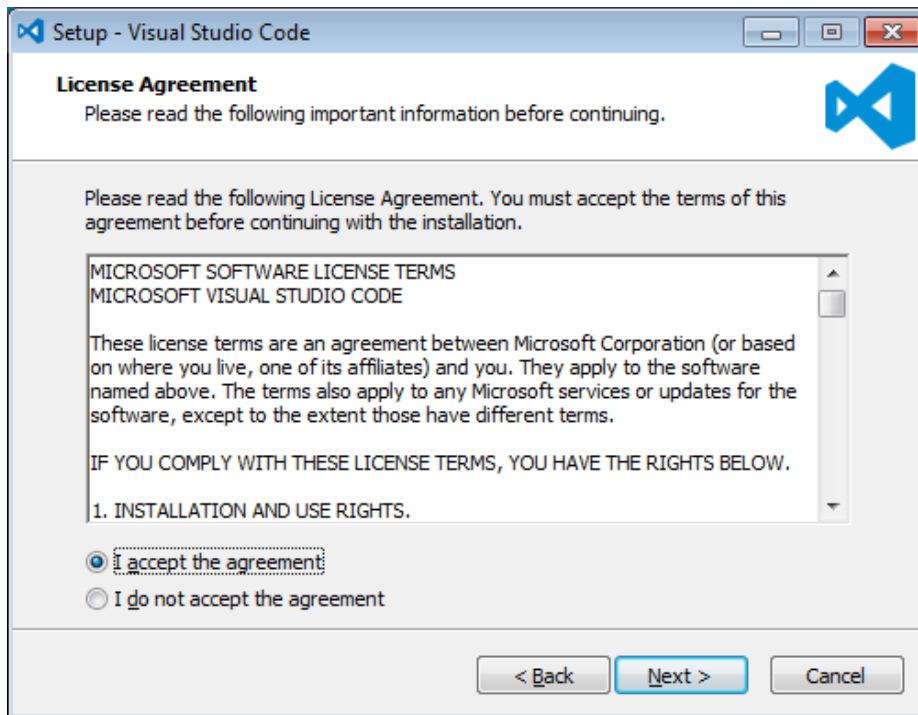
\_\_2. Run the downloaded installer to begin the installation.

\_\_3. Click **Next** on the welcome screen.

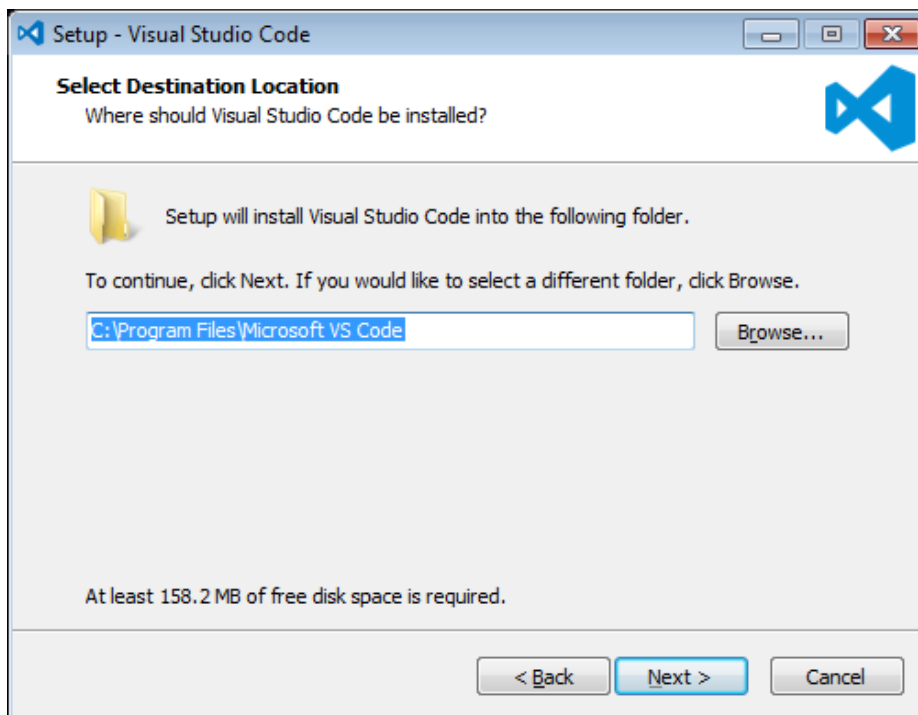


\_\_4. Check **I accept the agreement...** and click **Next**.

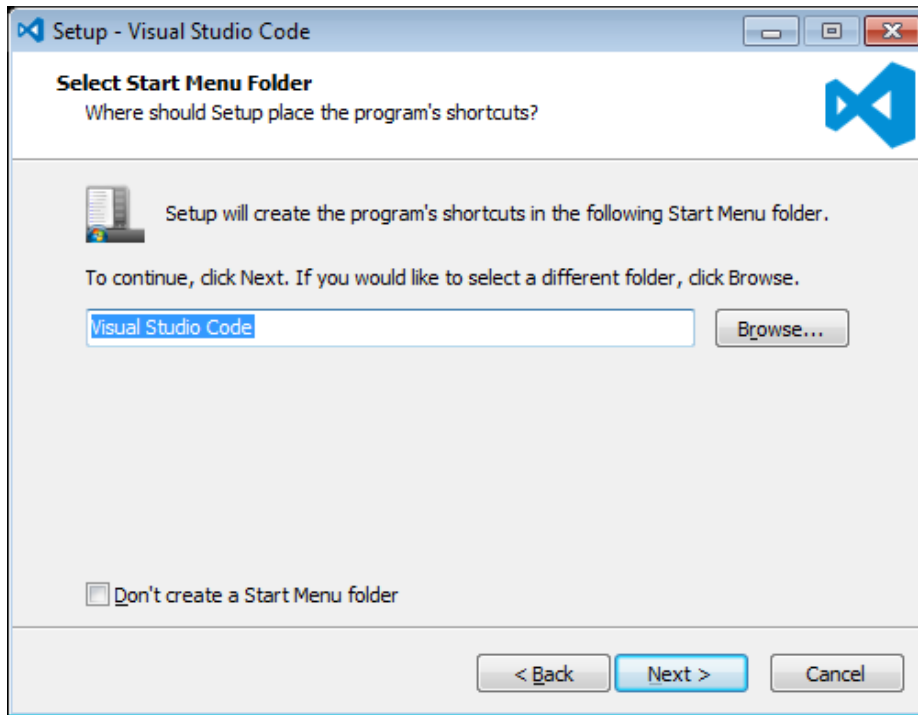




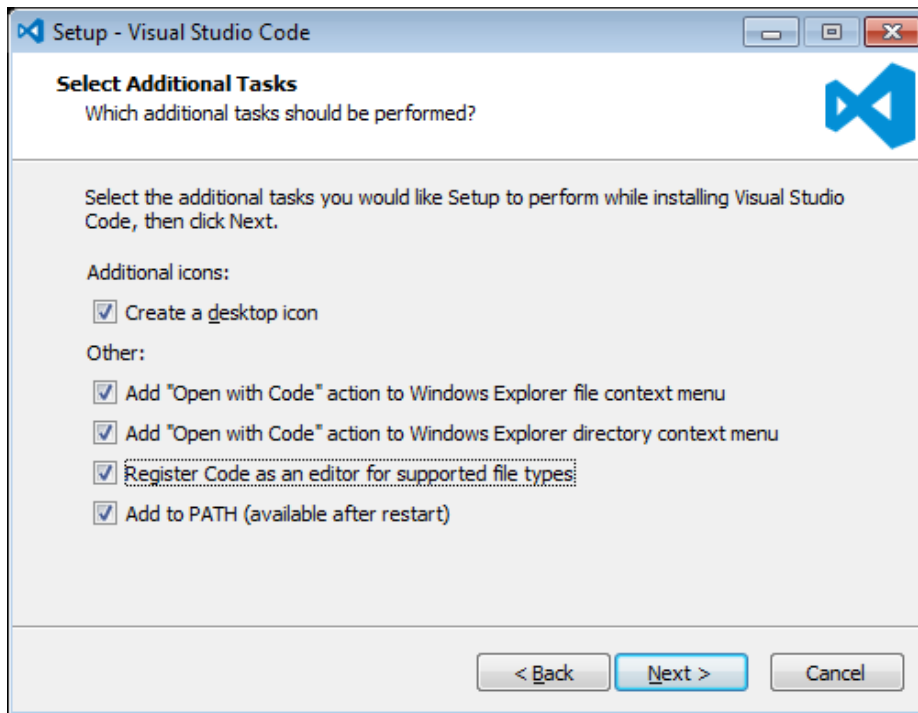
5. Leave the default installation location and click **Next**.



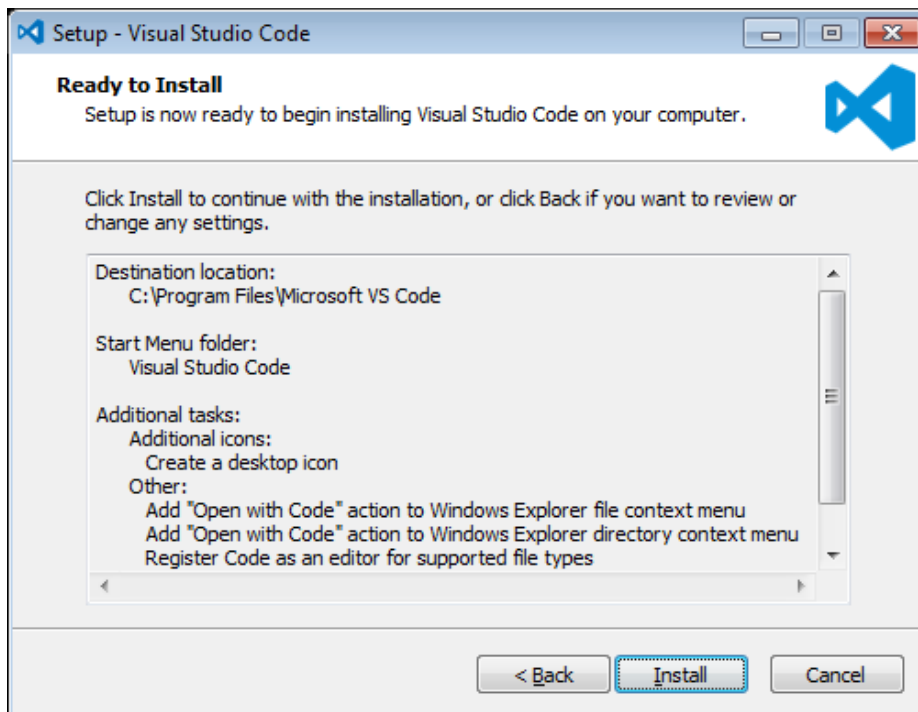
\_\_6. Leave the default start menu folder and click **Next**.



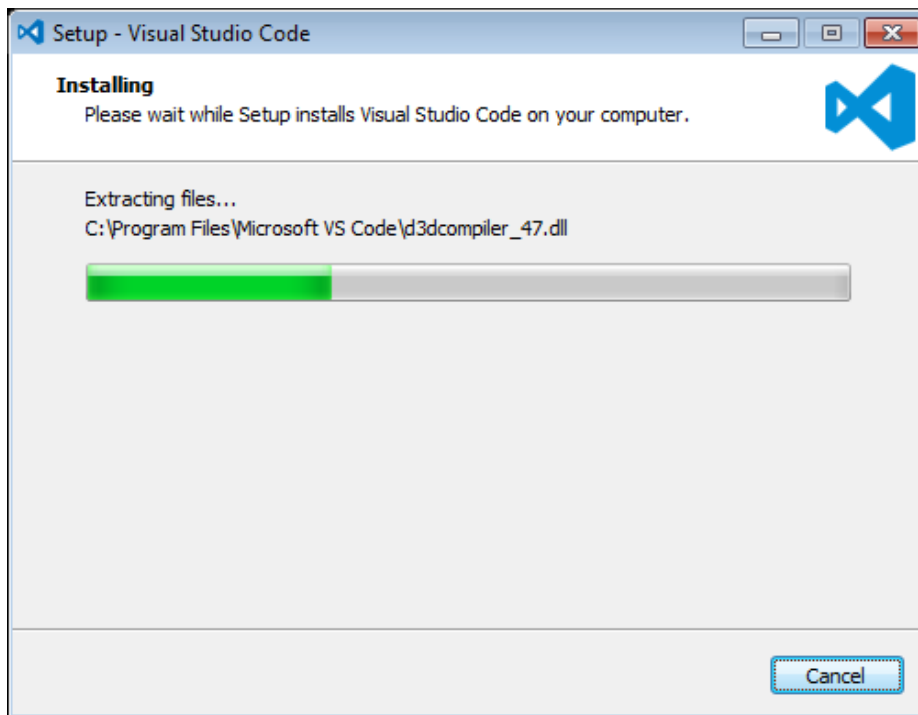
\_\_7. Put a check mark on all items under Additional Tasks and click **Next**.



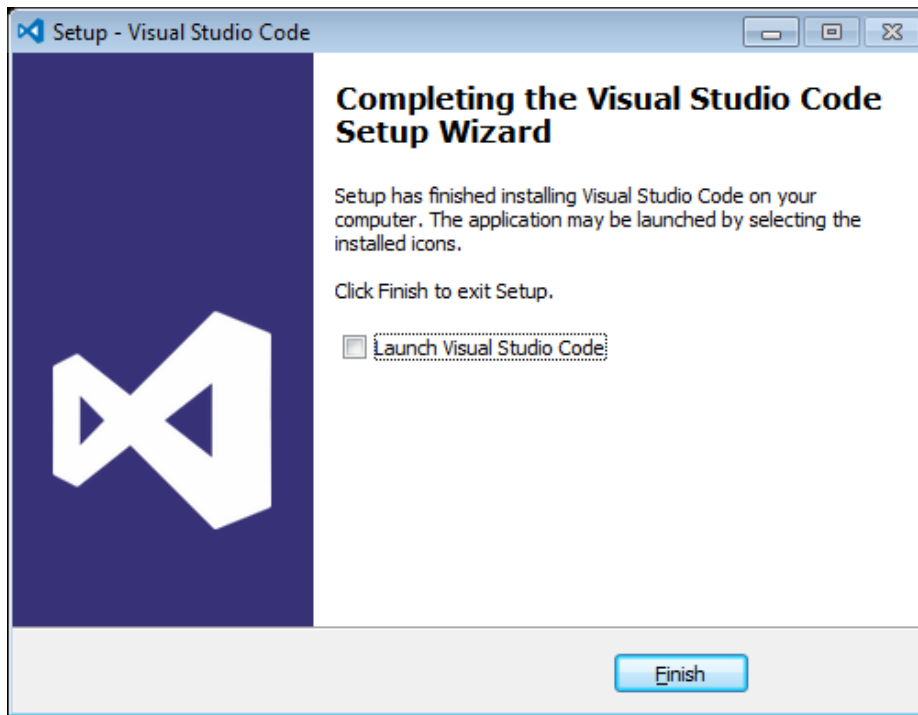
8. Now click **Install**.



\_\_9. Give it some time to install.

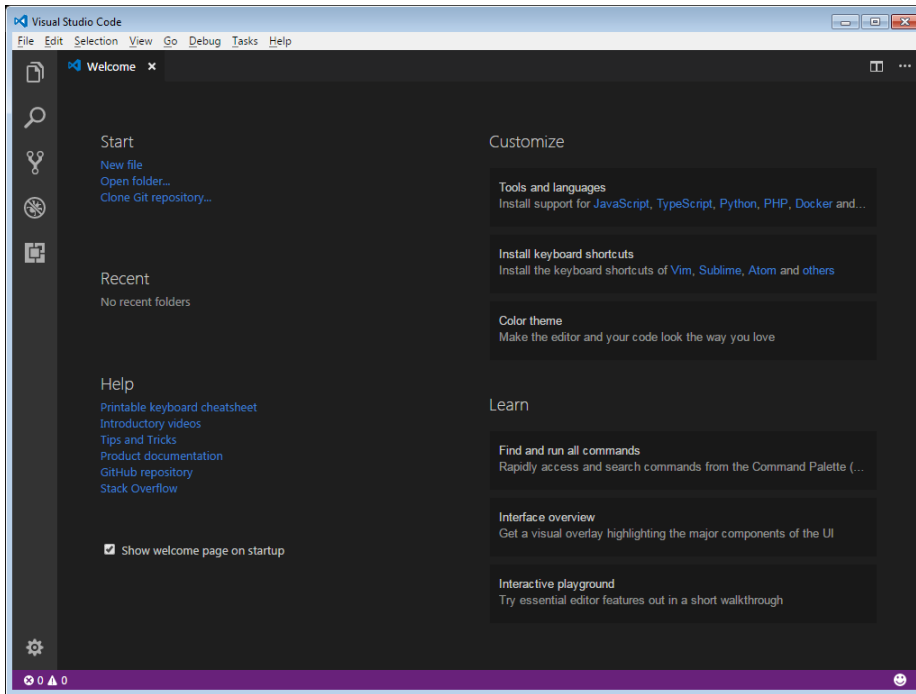


\_\_10. When it is complete, **uncheck Launch Visual Studio Code** and click **Finish**.

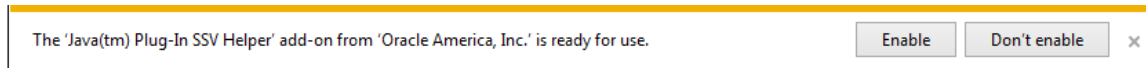


### **Installation verification of VScode.**

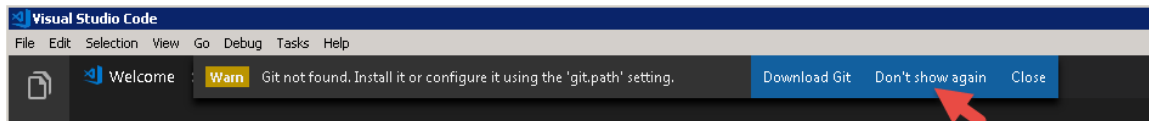
- \_\_1. Launch Visual Studio Code using the shortcut on the desktop.
- \_\_2. Verify Visual Studio Code opens and that you see the Welcome screen.



3. You may see a message to enable Java(tm) Plug-In, if so click Enable.



4. You may see a message regarding Git, if so click **Don't show again**.



5. Close all windows.

## **Part 8 - Summary**

**You have successfully installed the software for this course!**

If you have any question please contact us by email at [support@webagesolutions.com](mailto:support@webagesolutions.com)

From US and Canada call: 1-877-812-8887 ext. 26

International call: 416-406-3994 ext. 26