

WA2952 Operational Data Analytics with Splunk

Lab Server VM Setup Guide

Web Age Solutions Inc.

Table of Contents

Part 1 - Minimum Hardware Requirements.....	3
Part 2 - Minimum Software Requirements.....	3
Part 3 - Software Provided.....	3
Part 4 - Preparation.....	3
Part 5 - Installing the VMWare image.....	3
Part 6 - Verification of VM Installation.....	7
Part 7 - Summary.....	8

Part 1 - Minimum Hardware Requirements

The Lab server uses Ubuntu 18.04.2 LTS 64-bit Desktop packaged as a VMware VM with vmdk virtual disks. It requires a 64-bit host OS and a virtualization product that can support 64-bit guest OSes.

This VM uses 8 GB of RAM, 2 vCPU, and 32 GB virtual disk space.

Part 2 - Minimum Software Requirements

- Windows 10 / Server - 64 bit
- VMware player 15.x or higher

Part 3 - Software Provided

You will receive the following file (further referred to as the **VM ZIP** file) containing the VMware player-compatible virtual machine:

- **VM_WA2952_U18.04_Splunk_Apr-2020.7z**

Part 4 - Preparation

1. Extract the **VM ZIP file** to C:\

Note: Every student in the class will need a dedicated Lab Server. So the class setup will require as many Lab Servers as there are students in the class. In other words, you will need to perform this setup as many times.

It is recommended to have each Lab Server VM installed on a separate physical machine, although they can be collocated as long as their *Network Connectivity* is setup with the *Bridged* option (see details further in the document).

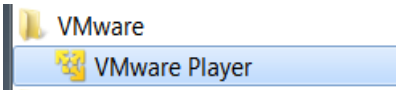
Part 5 - Installing the VMWare image

1. Open a file browser and navigate inside the unzipped **VM ZIP** folder. Locate the VMware player executable file **vmplayer.exe**.

Note. If you don't find the VMware player executable file in this folder, download the VMware player **14** or higher from the VMware website using the following link:

<http://www.vmware.com>

- __2. Install the VMWare player accepting all the defaults during the installation.
- __3. Restart the computer.
- __1. From the Start menu, select **All Programs > VMware > VMware Player**.

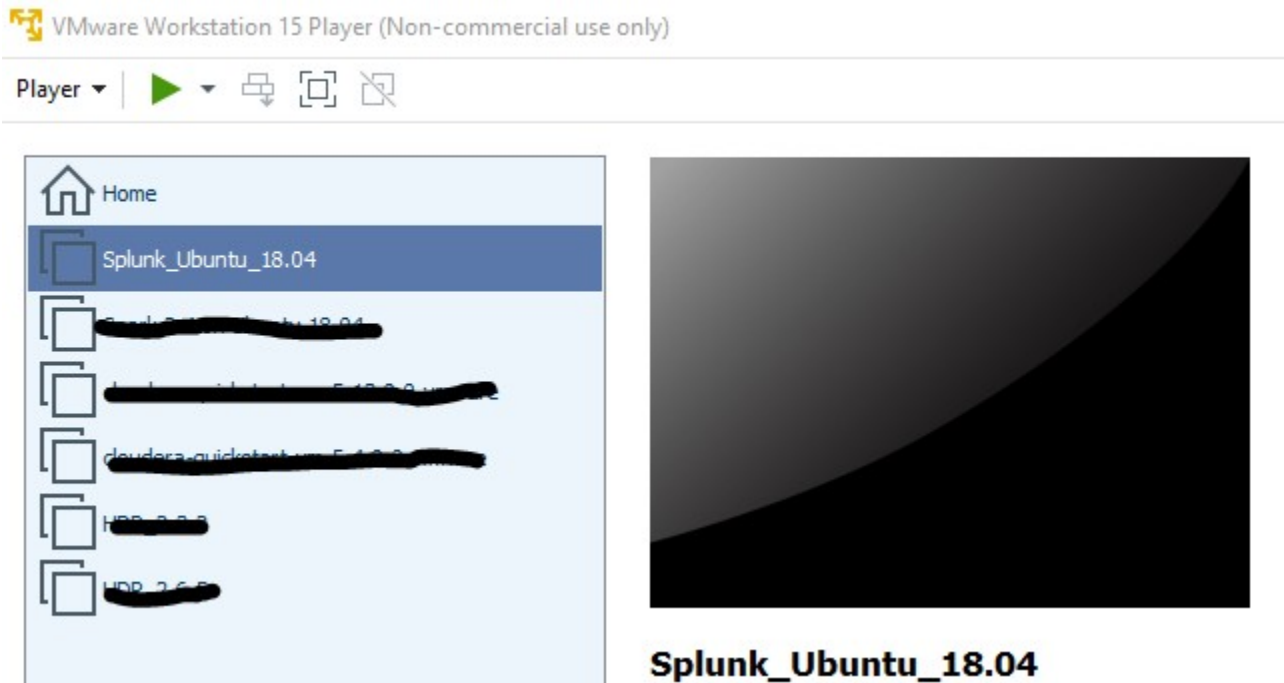


- __2. If prompted to download a new version of VMWare player decline the update.
- __3. Press **Ctrl-O**.

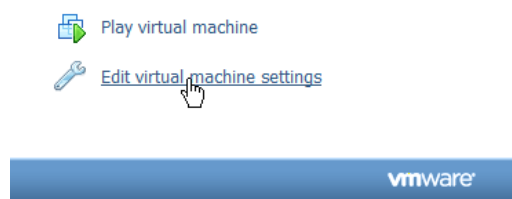
The *Open Virtual Machine* dialog opens

- __4. Locate and select the **Splunk_Ubuntu_18.04.vmx** file located under the unzipped **VM ZIP** folder and click **Open**.

The **Splunk_Ubuntu_18.04.vmx** menu option will appear on the list of available virtual machines.



- __5. Click **Edit virtual machine settings** at the bottom of the VMWare Player

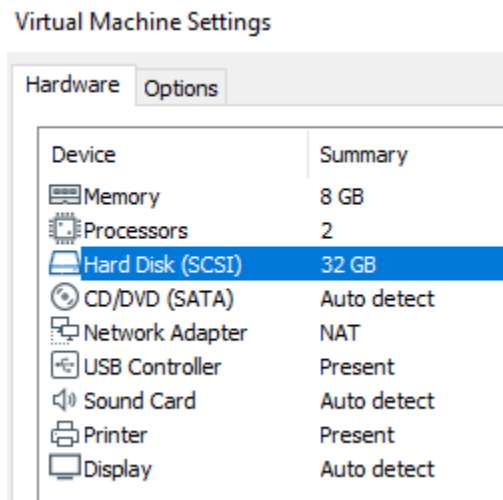


The *Virtual Machine Settings* screen opens with the **Hardware** tab opened by default.

__6. Set the **Memory** size attribute to **8 GB (8192 M)**

__7. Set the number of **Processors** attribute to **2**

__8. Set the **Hard Disk** size to **32 GB**



__9. The **Network Adapter** VM attribute can be configured for the **Bridged** or **NAT** connection options.

- ✓ As a rule of thumb, use **NAT** for the **VM** being installed locally on the physical student machine, use **Bridged** on remote machines. If these suggestions do not work, use the options that best suite your environment.
- ✓ The NAT options is preselected by default; for the Bridged option, see the **Setting Up the IP Address of the Lab Server VM** lab step at the end of the document

__10. Click **CD/DVD (IDE) Device**

__11. Uncheck the **Connect at power on** (or keep it clear if it is already unchecked) *Device status*

__12. If **Floppy** is present, click **Floppy** (if this option is **not** present, skip to the next numbered step)

- ✓ Uncheck the **Connect at power on** (or keep it clear if it is already unchecked)

__13. If **Sound Card** is present, click **Sound Card** (if this option is **not** present, skip to the next to the next numbered step)

- ✓ Uncheck the **Connect at power on** (or keep it clear if it is already unchecked)

__14. If **Printer** is present, click **Printer** (if this option is **not** present, skip to the next to the next numbered step)

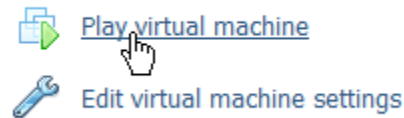
- ✓ Uncheck the **Connect at power on** (or keep it clear if it is already unchecked)

__15. Click **OK** at the bottom of the *Virtual Machine Settings Screen* to close it.

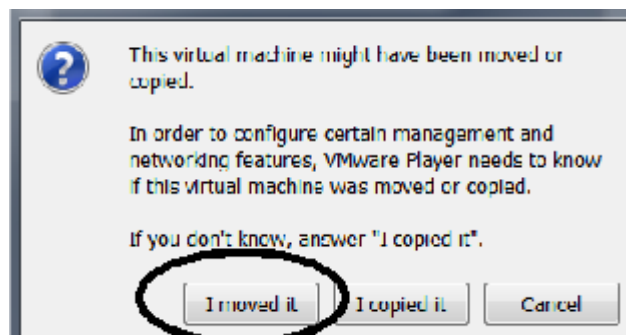


Part 6 - Verification of VM Installation

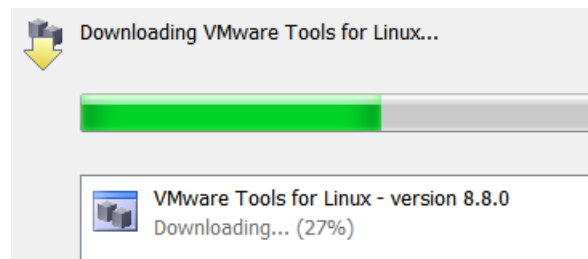
__1. Select the **Splunk_Ubuntu_18.04** virtual machine (it should already be pre-selected) and click **Play virtual machine**.



__2. Click "**I moved it**", if prompted.

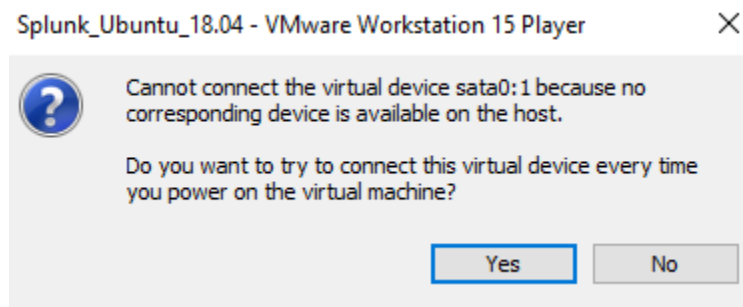


__3. If you are prompted to download and install the VMware Tools for Linux, accepted the option.



Accept reasonable options if and when they appear.

If you are presented with the following popup, click **Yes** to proceed.



VM bootstrapping may take some time and when it completes you should be automatically logged into the Lab Server VM as the *wasadmin* user and placed at *wasadmin*'s Desktop.

This completes the verification step of the Lab Server VM installation.

Part 7 - Summary

You have successfully installed the software for this course!

If you have any question please contact us by email at support@webagesolutions.com

From US and Canada call: 1-877-812-8887 ext. 26

International call: 416-406-3994 ext. 26