

**WA2895 API Management
Fundamentals for Architects**

Classroom Setup Guide

Web Age Solutions Inc.

Table of Contents

Part 1 - Accounts.....	3
Part 2 - Minimum Hardware Requirements.....	3
Part 3 - Minimum Software Requirements.....	3
Part 4 - Software Provided.....	4
Part 5 - Instructions.....	4
Part 6 - Privileges to Users.....	5
Part 7 - Installing Postman 7.21.....	8
Part 8 - MuleSoft Anypoint Studio 7.9.0.....	9
Part 9 - ARC.....	11
Part 10 - Summary.....	13

Part 1 - Accounts

This course requires the following:

- Qwiklabs (10 credits)
- AWS
- Azure

Part 2 - Minimum Hardware Requirements

- 64 bits OS
- 2 cores
- 4 GB RAM minimum; 8 GB RAM recommended
- 20 GB in the hard disk
- Internet access.

Part 3 - Minimum Software Requirements

- Windows 8.1
- Firefox latest
- Chrome latest
- Adobe Acrobat Reader
- Zip extraction utility
- Postman *
- Anypoint Studio *
- ARC *

- * - indicates software provided as part of the courseware.

Part 4 - Software Provided

You will receive:

- **WA2895-REL_3_0.zip**

All other software listed under Minimum Software Requirements is either commercially licensed software that you must provide or software that is freely available off the Internet.

Part 5 - Instructions

__1. Create a user and login with this user with privileges as administrator to be able to execute programs from C:\Software.

__2. Extract the **ZIP** file to C:\

__3. Review that the following folders were created:

- **C:\LabFiles**
- **C:\Software**
- **C:\Software\AnypointStudio-7.9.0\AnypointStudio**

__4. Review that the following files were created:

- **C:\Software\arc-setup.exe**
- **C:\Software\Postman-win64-7.21.0-Setup.exe**

Part 6 - Privileges to Users

During the labs students will require privileges on several directories. They will need to be able to write, read, and modify files in these directories for the labs. Although the directions below are provided as an example, this may differ depending on Windows version. The important thing is to make sure students have full permissions on the folders below or they may not be able to accomplish some labs.

- **C:\Software**
- **C:\LabFiles**
- **C:\Workspace**

__1. Create the user that the students will use during the class.

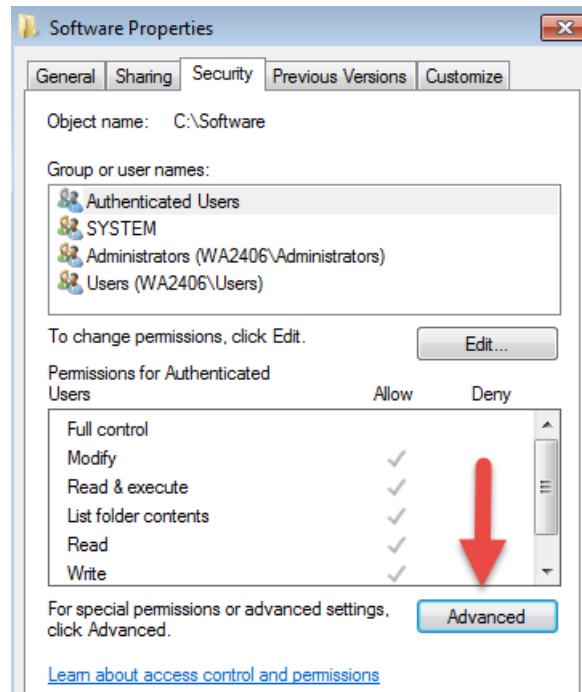
__2. Give the student user account administrative rights. During the labs the student requires this to install software.

__3. Open Windows Explorer.

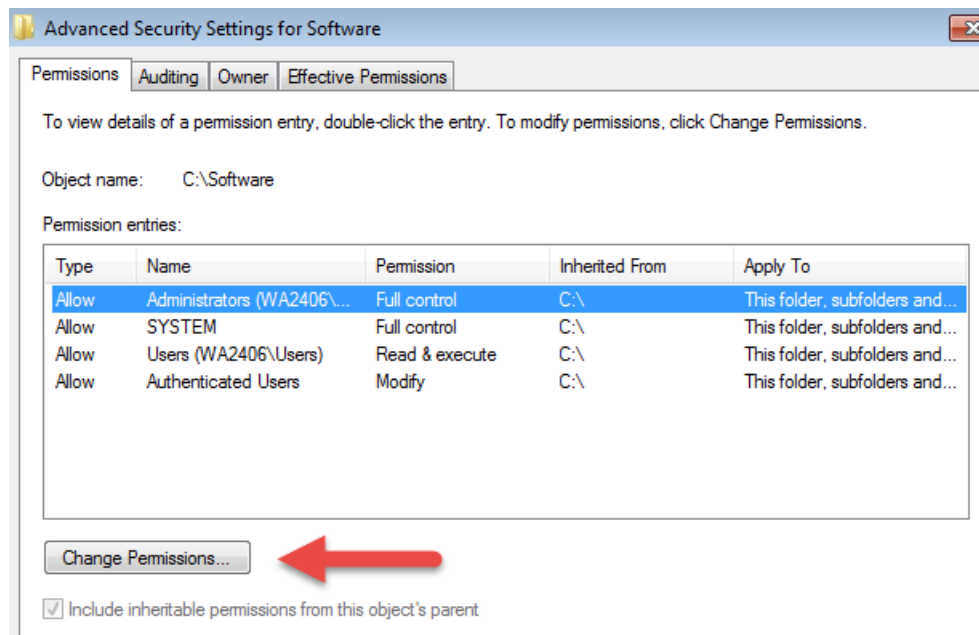
__4. Right click C:**Software** and select **Properties**.

__5. Click the **Security** tab.

__6. Click **Advanced**.

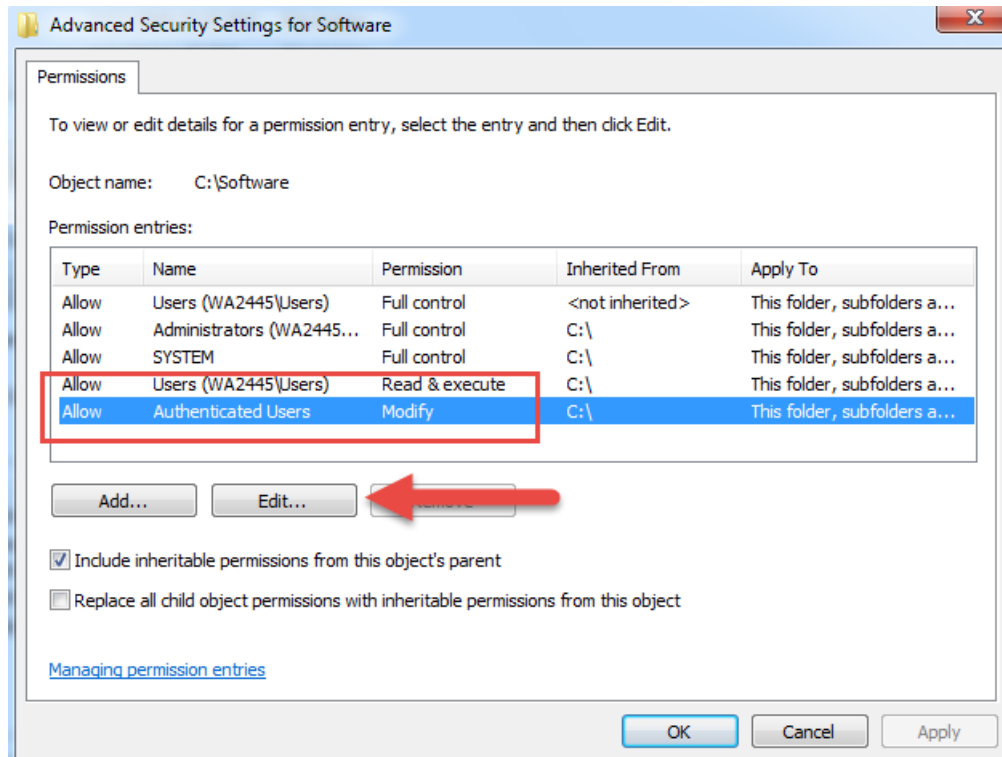


__7. Click **Change Permissions**.

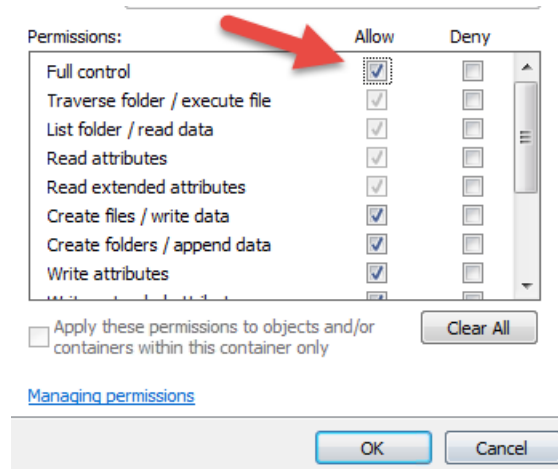


__8. Select the **Authenticated Users** entry and click **Edit...**

Note. If you don't have a domain in your environment the select **Users** instead **Authenticated Users**.



__9. Check the **Allow** checkbox to the right of **Full Control** and click **OK**.



__10. Select the checkbox for **Replace all child permissions with inheritable permissions from this objects** and then click **OK**.



- Include inheritable permissions from this object's parent
- Replace all child object permissions with inheritable permissions from this object

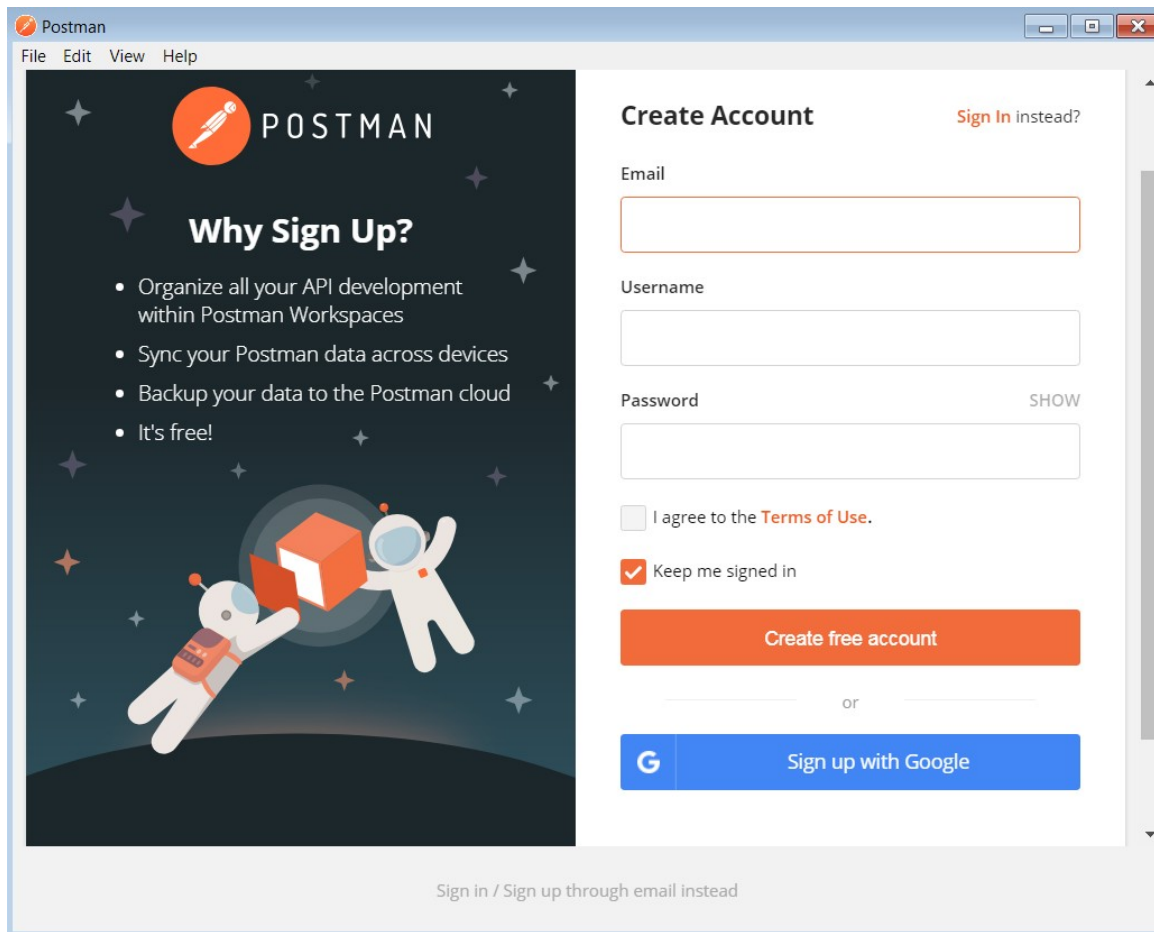
- __ 11. A *Windows Security* dialog will open. Click **Yes**.
- __ 12. Wait until Windows finishes updating security.
- __ 13. Back in the *Advanced Security Settings* dialog, click **OK**.
- __ 14. Back in the *Properties* dialog, click **OK**.
- __ 15. Do the same steps to the **C:\LabFiles** folder.
- __ 16. Create a folder called **C:\Workspace** if its not already created.
- __ 17. Do the same steps to the **C:\Workspace** folder.

Part 7 - Installing Postman 7.21

- __ 1. Open **C:\Software**
- __ 2. Double click this file begin installation:

Postman-win64-7.21.0-Setup.exe

Installation will start and after a while Postman will be launched.



__3. Close Postman.

Part 8 - MuleSoft Anypoint Studio 7.9.0

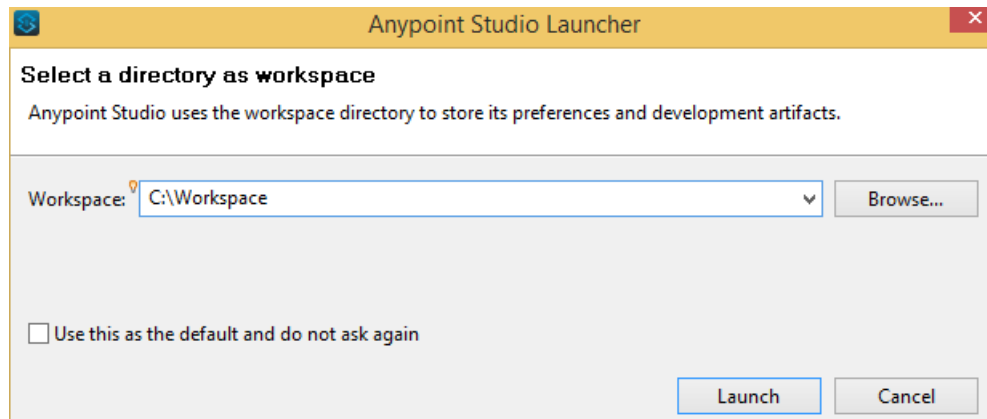
__1. In Windows Explorer navigate to:

`C:\Software\AnypointStudio-7.9.0\AnypointStudio\`

__2. Double click on **AnypointStudio.exe**. This will launch the software.

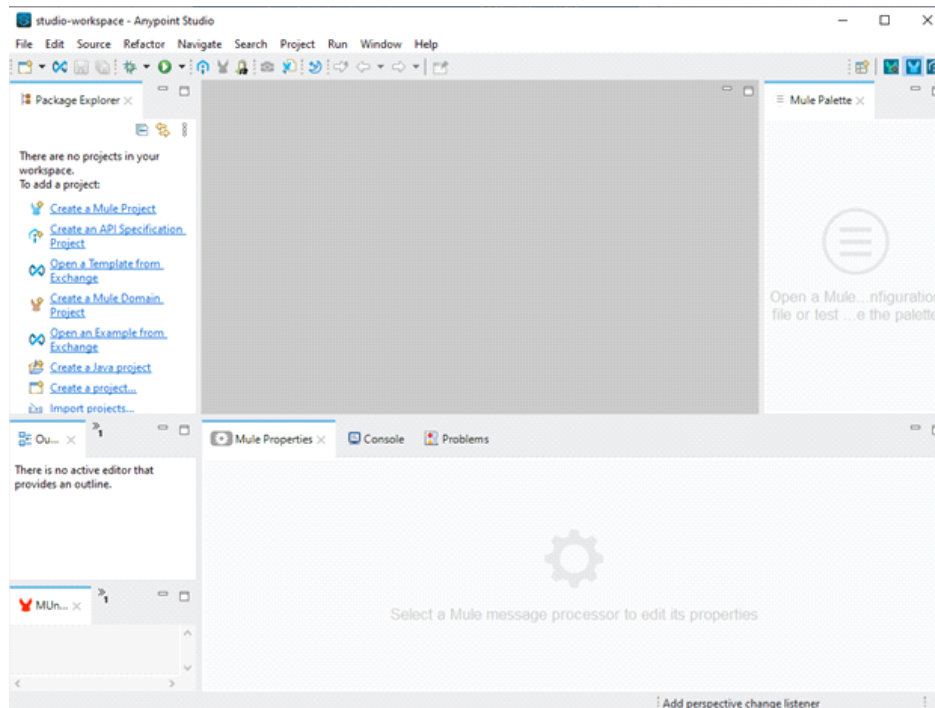


__3. Change the workspace to **C:\Workspace** and click **Launch**.



__4. Click **Allow access** if you see a Windows Security alert while opening Anypoint Studio.

The Anypoint Studio interface should appear.



__5. Close all.

Part 9 - ARC

__1. To run Arc, open a file browser and navigate to **C:\Software**

__2. Double click the **arc-setup.exe** file to run it.

__3. The Welcome screen will open, click **Save and Open the application**

Welcome to Advanced REST Client!

Your privacy is important to us. You can limit or completely disable anonymous usage statistics for the application.

The analytics data are processed for usage analysis which helps us make design and development decisions. **We do not share this data with anyone.**

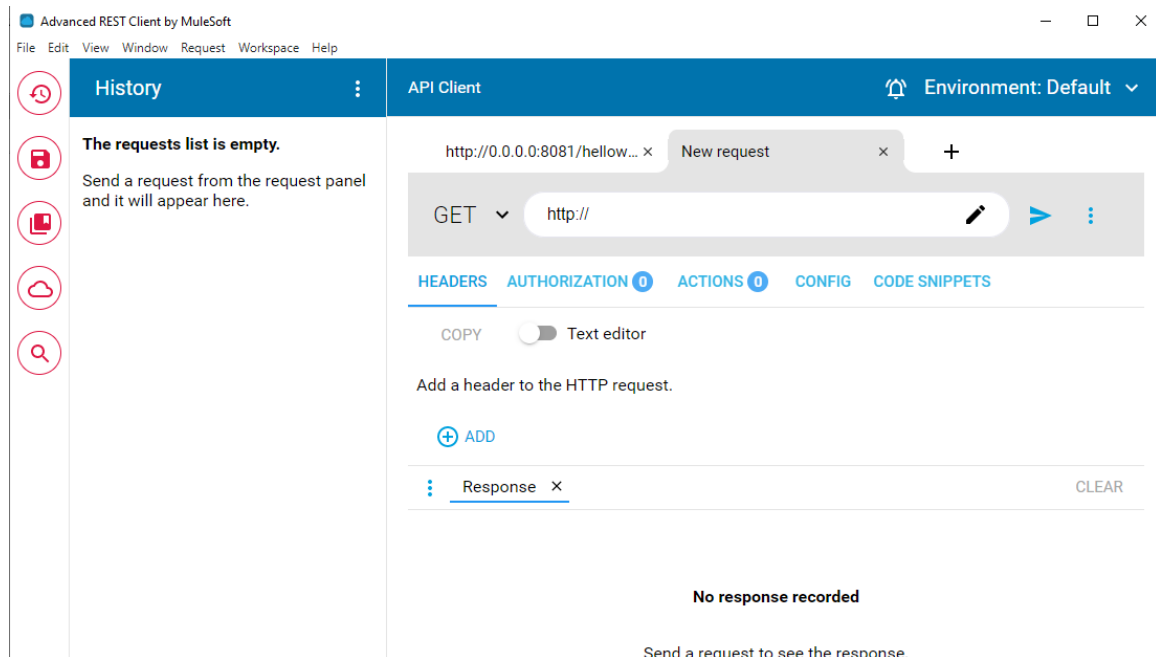
You can read our privacy statement in the [Privacy policy](#) document.

Select anonymous data collection level
Limited usage statistics Opened screen names, ...

You can always change it later in the application settings.

SAVE AND OPEN THE APPLICATION

The ARC Software app should open as below.



__4. Close all.

Part 10 - Summary

You have successfully installed the software for this course!

If you have any question please contact us by email at support@webagesolutions.com

From US and Canada call: 1-877-812-8887 ext. 26

International call: 416-406-3994 ext. 26