

**WA2715 Applied Data Science with
Python**

Classroom Setup Guide

Web Age Solutions Inc.

Table of Contents

Part 1 - Minimum Software Requirements	3
Part 2 - Software Provided.....	3
Part 3 - Instructions.....	3
Part 4 - Install Anaconda on Windows	4
Part 5 - Set Chrome as Your Default Browser.....	8
Part 6 - Verify Installation.....	9
Part 7 - Summary.....	9

Part 1 - Minimum Software Requirements

- Windows OS: Windows Vista / 7.
- Latest Google Chrome browser

Part 2 - Software Provided

You will receive the following file:

- **WA2715_REL_1_0.ZIP**

All other software listed under Minimum Software Requirements is either commercially licensed software that you must provide or software that is freely available off the Internet.

Part 3 - Instructions

__1. Make sure the account that you are using to install the software has administrative privileges and the student using this machine will have the same rights.

__2. Extract the **.ZIP** file to **C:**

__3. Review that the following folders were created:

- **C:\LabFiles**
- **C:\Software**

__4. Review that the following file was created:

- **C:\Software\Anaconda3-5.1.0-Windows-x86.exe**

__5. Download and install the latest Google Chrome browser from:

<https://www.google.com/intl/en/chrome/browser>

Part 4 - Install Anaconda on Windows

Anaconda is a distribution package of Python along with the most popular Python modules and the web-based REPL.

__1. (Skip this step, if not applicable) If you are not yet logged in on the Student computer, log in as the user who will be using this software in the class.

__2. From the **C:\Software** directory, run **Anaconda3-5.1.0-Windows-x86.exe**

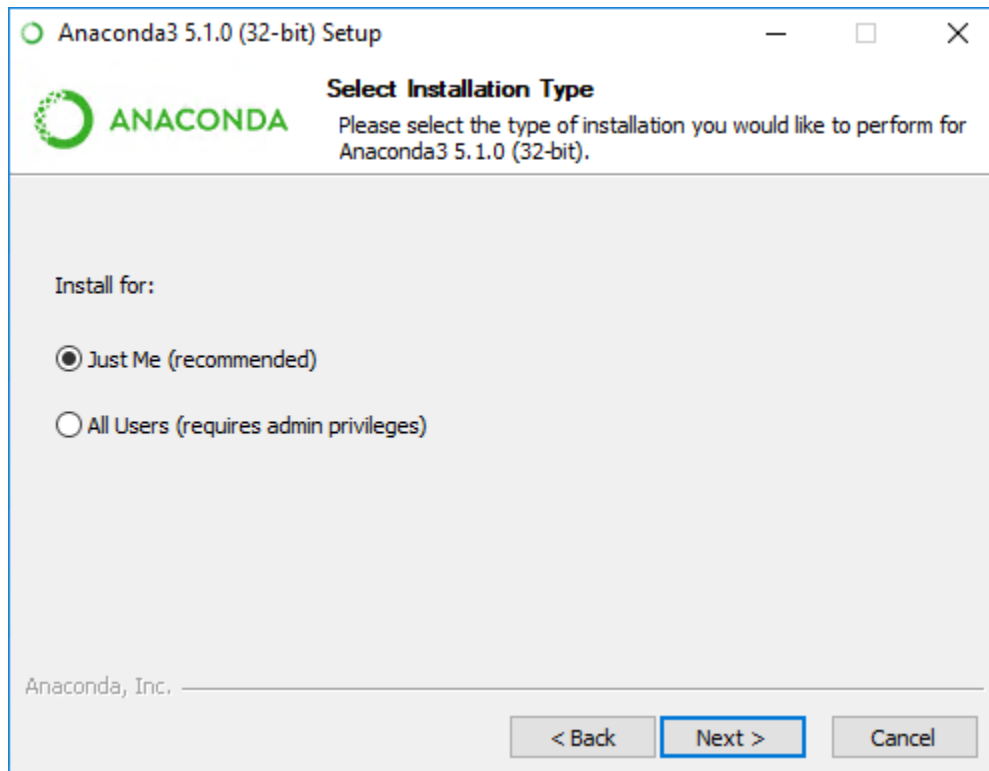
You will be presented with the *Setup Welcome* dialog.



__3. Click **Next**.

__4. Accept the *License Agreement*.

You will be presented with the *Installation Type* dialog.



__5. Select **Just Me** and click **Next**.

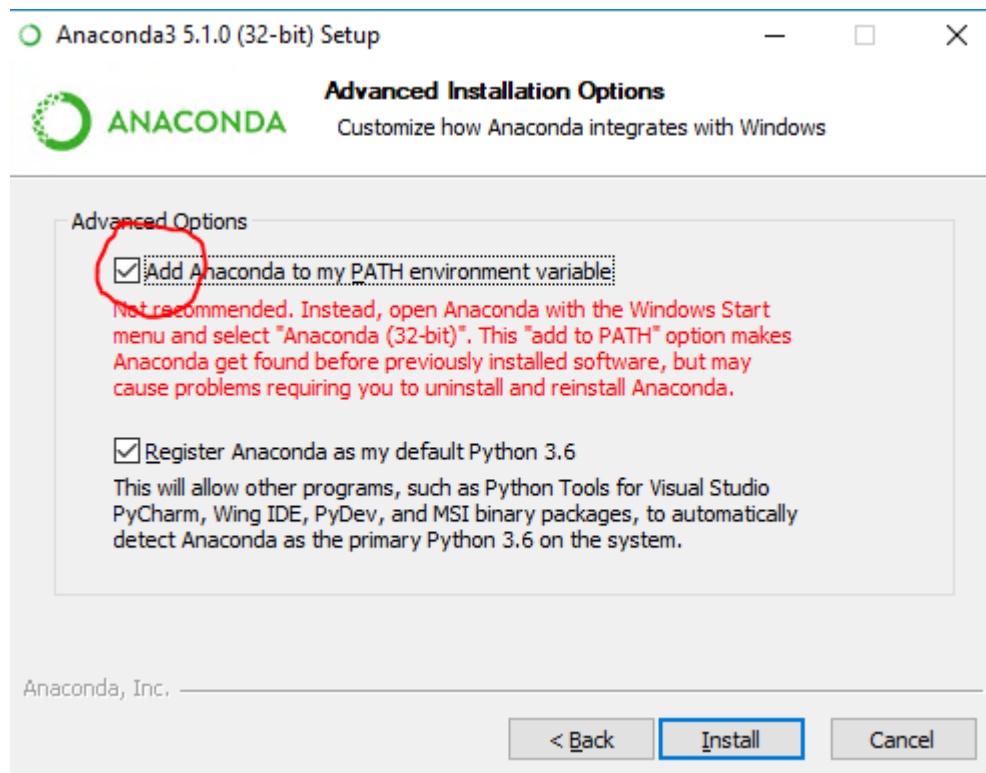
Note: You will remember that you have logged in as the user who will be using this software in the class.

__6. In the *Install Location* dialog, accept the default *Destination Folder*; click **Next**.

__7. In the *Advanced Installation Options*, check the **Add Anaconda to my PATH environment variable**.

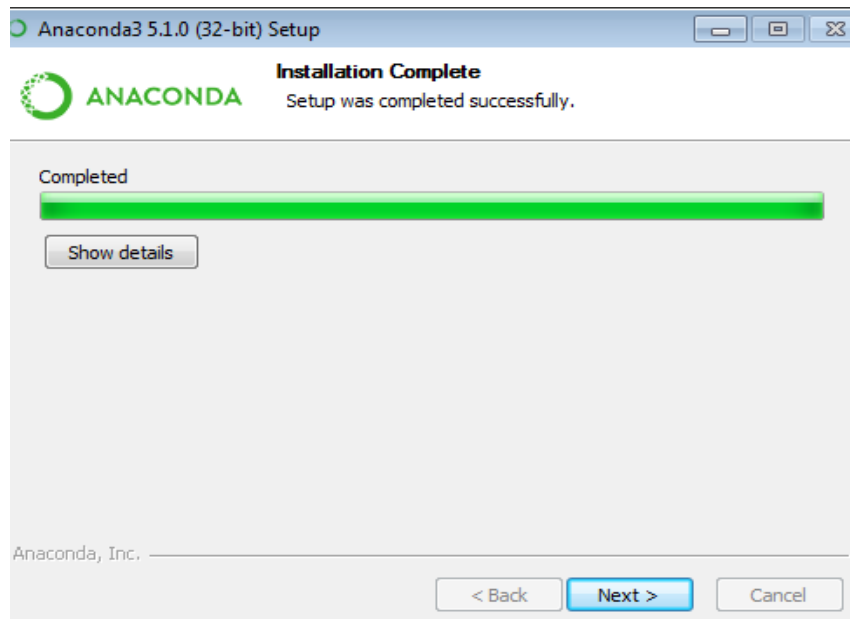
Ignore any warning messages.

__8. Click **Install**.

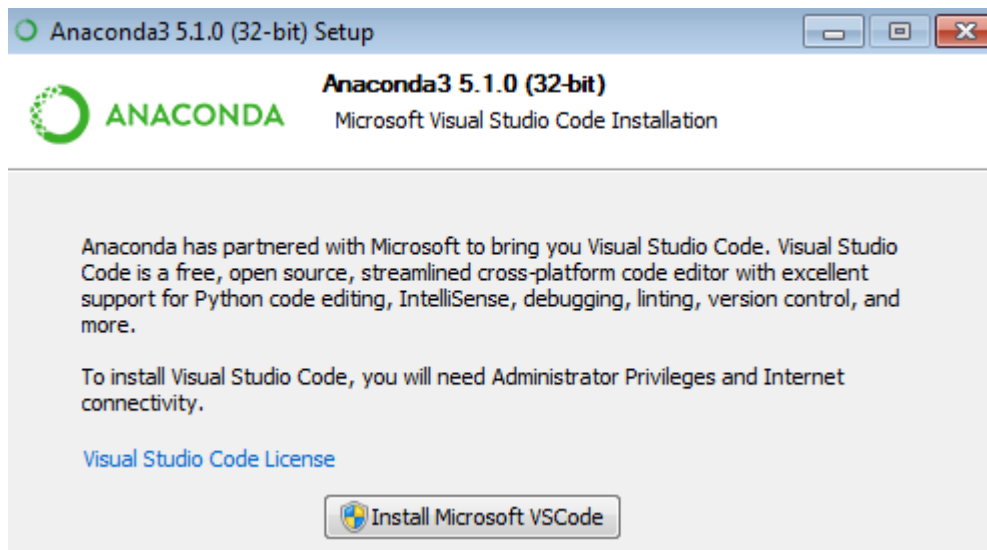


Wait for the installation to complete (it may take several minutes).

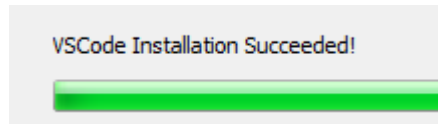
__9. Click **Next** when the installation is complete.



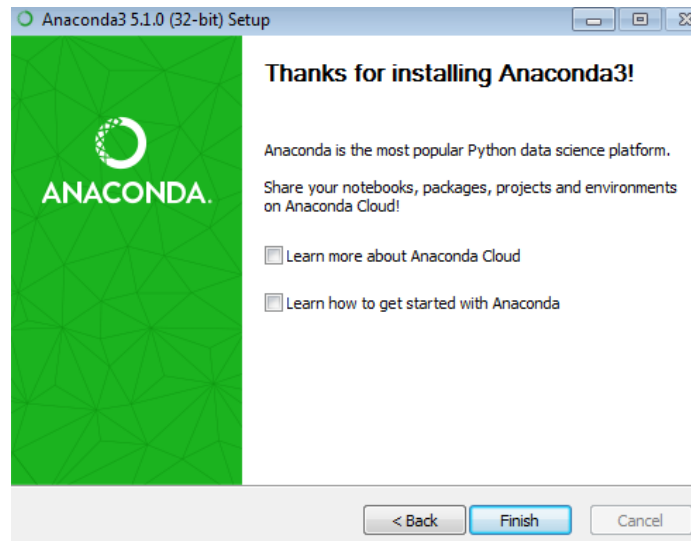
__10. You may request to install Visual Studio Code, if so click **Install Microsoft VSCode**.



__11. Wait for Visual Studio Code to be downloaded, you will see that VSCode was installed successfully.



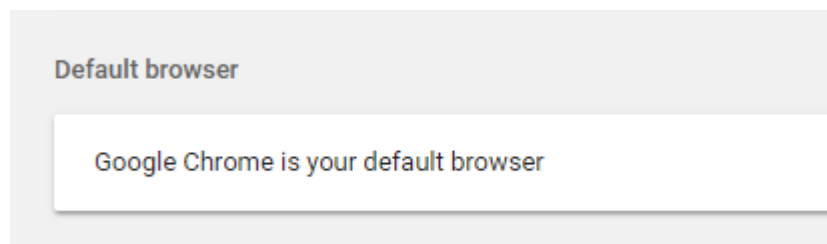
__12. Uncheck all and click **Finish**.



Part 5 - Set Chrome as Your Default Browser

Depending on the version of Windows and Chrome, steps to set Chrome as your default browser may differ. Follow the applicable steps.

In the **chrome://settings/** page open in Chrome, you should see something similar to this message:



Part 6 - Verify Installation

__1. Open a command prompt window and type in:

```
jupyter notebook
```

An instance of Chrome browser should start and load a web page listing the files in your current working directory.

__2. Close the browser.

__3. In the command prompt window, press **Ctrl-C** to stop the *jupyter* web server.

You should see these messages when you have stopped it:

```
... Interrupted...  
... Shutting down 0 kernels
```

__4. Close the command prompt window.

Installation and verification steps are complete.

Part 7 - Summary

You have successfully installed the software for this course!

If you have any question please contact us by email at support@webagesolutions.com

From US and Canada call: 1-877-812-8887 ext. 26

International call: 416-406-3994 ext. 26

You have successfully installed the software for this course.