

WA2711 R Programming from the Ground Up

Classroom Setup Guide

Web Age Solutions Inc.

Table of Contents

Part 1 - Minimum Software Requirements	3
Part 2 - Software Provided.....	3
Part 3 - Instructions.....	3
Part 4 - Organize Windows Explorer Folder Views	5
Part 5 - Installing R Programming Language 3.3.1 on Windows	7
Part 6 - Verify Installation.....	11
Part 7 - Installing RStudio Desktop v.1.1.383 on Windows.....	12
Part 8 - Verify Installation.....	12
Part 9 - Summary.....	13

Part 1 - Minimum Software Requirements

- Windows OS: Windows Vista / 7.
- Latest Google Chrome browser
- Internet

Part 2 - Software Provided

List of ZIP files required for this course and used in next steps on this document:

- **WA2711_REL_1_0.ZIP**

Send an email to support@webagesolutions.com in order to obtain a copy of the software for this course if you haven't receive it yet.

All other software listed under Minimum Software Requirements is either commercially licensed software that you must provide or software that is freely available off the Internet.

Part 3 - Instructions

__1. Make sure the account that you are using to install the software has administrative privileges and the student using this machine will have the same rights.

__2. Extract the Zip file to **C:**

__3. Review that the following folders were created:

- **C:\LabFiles**
- **C:\Software**
- **C:\Software\RStudio\R**

__4. Review that the following files were created:

- **C:\Software\RStudio\R\R-3.3.1-win.exe**
- **C:\Software\RStudio\R\RStudio-1.1.383.exe**

__5. Download and install the latest Google Chrome browser from:

<https://www.google.com/intl/en/chrome/browser>

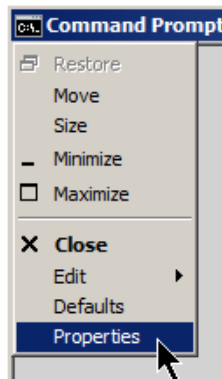
__6. Create a folder on the local file-system named **c:\RW**

__7. Create a shortcut to the Windows Command Prompt onto the desktop.



__8. Double click the Command Prompt shortcut to open the Command Prompt window.

__9. In the Command Prompt window, click the black icon in the top left-hand corner and select **Properties** from the context menu.



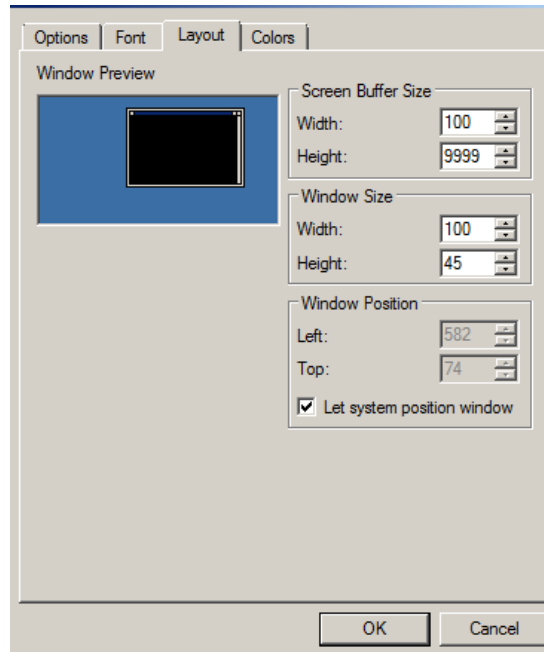
The Properties dialog opens.

__10. In the Properties dialog, check the **Quick Edit Mode** check box.

Note: This option allows a user to copy and paste text in the command prompt using mouse actions instead of an edit menu.

__11. Click the **Layout** tab.

__12. In the *Layout* tab, enter **100** for *Width* property (for both *Width* text windows in the *Layout* tab window), **9999** for the *Height of the Screen Buffer Size* property, and **45** for the *Height* property of the *Window Size* property.



__13. Click **OK** to close the Properties dialog.

__14. If an *Apply Properties to Shortcut* dialog appears, select **Modify shortcut that started this window** and click **OK**.

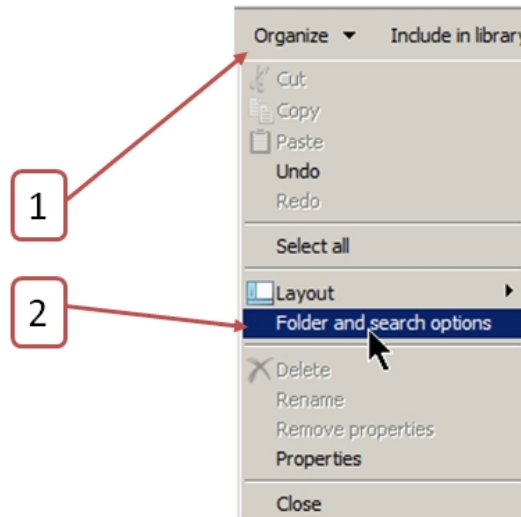


Part 4 - Organize Windows Explorer Folder Views

__1. Start Windows Explorer

The steps below may slightly vary depending on the Windows version (the steps below are shown for Windows 7). The main purpose of these steps is to enable the system-wide display of user file extensions and hidden files in Windows Explorer.

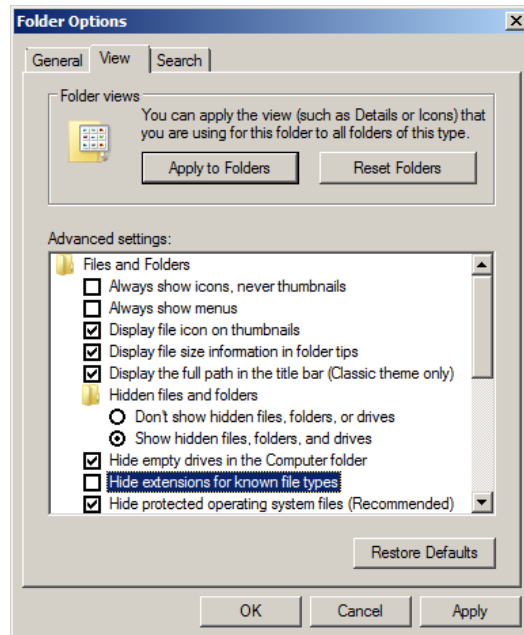
__2. In the menu bar of Windows Explorer, click the **Organize** drop-down menu and select **Folder and search options**



__3. In the *Folder Options* dialog that opens, click the **View** tab

__4. In the **View** tab:

- Check the **Display the full path in the title bar ...** check box
- Select the **Show hidden files, folders, and drives** radio button
- Uncheck the **Hide extensions for known file types** check box



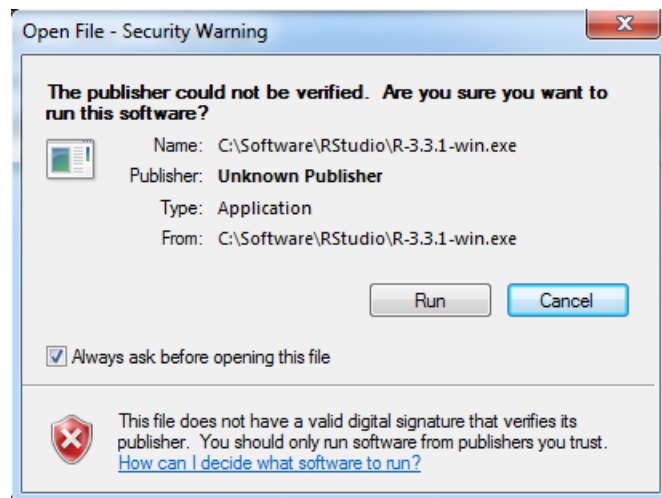
__5. Click the **OK** button

Part 5 - Installing R Programming Language 3.3.1 on Windows

__1. (Skip this step, if not applicable) If you are not yet logged in on the Student computer, log in as the user who will be using this software in the class.

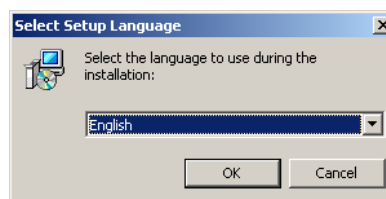
__2. From the **C:\Software\RStudio\R** directory, run **R-3.3.1-win.exe**

__3. If prompted with the *Windows Security Warning*, click **Run**.



__4. If prompted with the Windows system *User Account Control* dialog, click **Yes**.

__5. Accept **English** as the Setup Language and click **OK**.

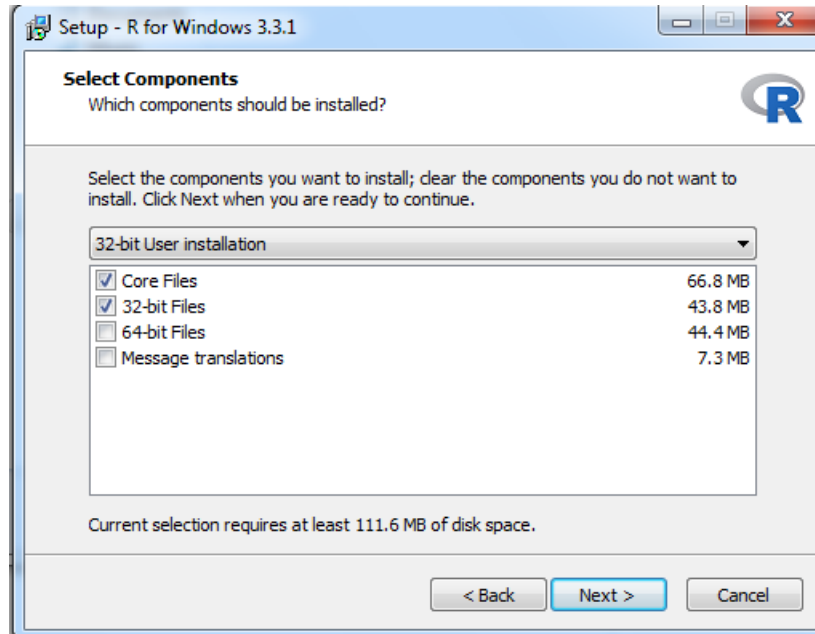


__6. In the *Welcome* screen that opens, click **Next >**

__7. In the *License Dialog*, click **Next >**

__8. In the *Destination Location* dialog, enter **c:\Software\R** for the folder location and click **Next >**

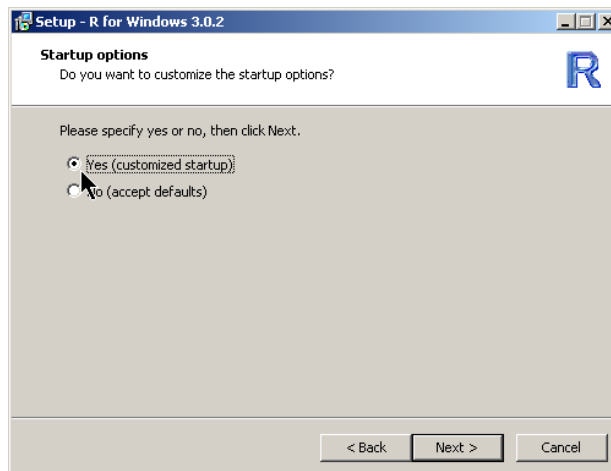
__9. In the *Select Components* dialog, select the **32-bit User Installation** option from the drop-down box.



__10. Accept default preselected options for *Core Files* and *32-bit Files* checkboxes.

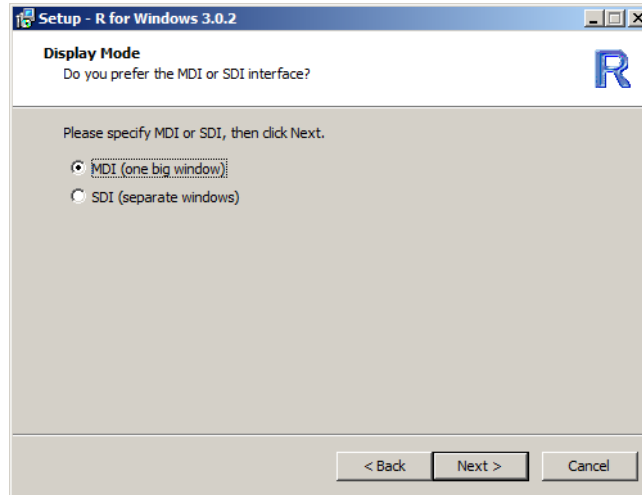
__11. Click **Next >**

__12. In the *Startup options* dialog, select **Yes** (customized startup).



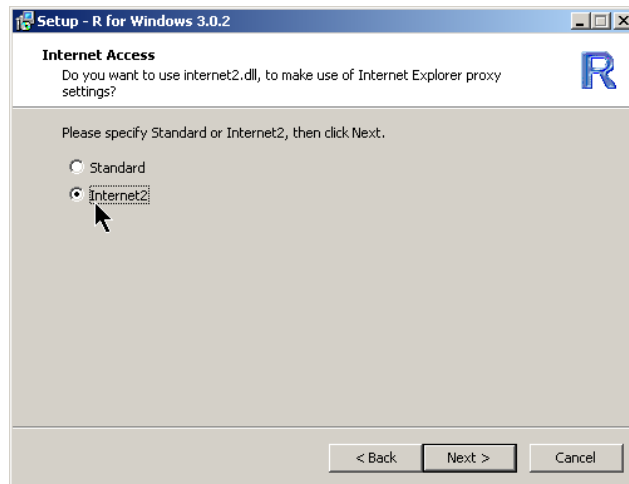
__13. Click **Next >**

__14. In the *Display Mode* dialog, accept the default *MDI* option and click **Next >**



__15. In the *Help Style* dialog, accept the default *HTML help* option and click **Next >**

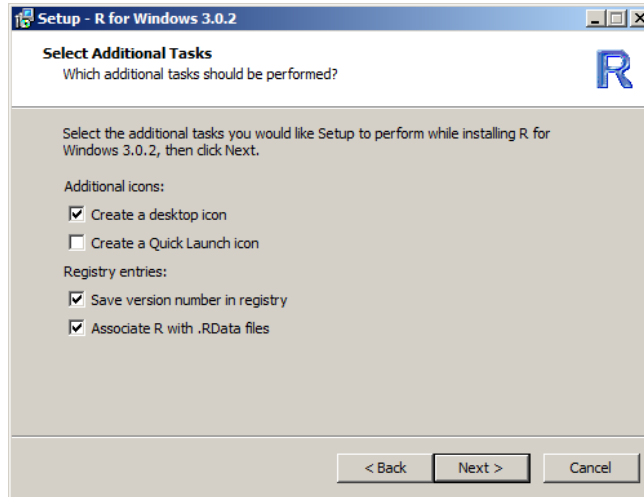
__16. If prompted, in the *Internet Access* dialog, select **Internet2** option.



__17. Click **Next >**

__18. In the *Select Start Menu Folder* dialog, accept the default **R** name and click **Next >**

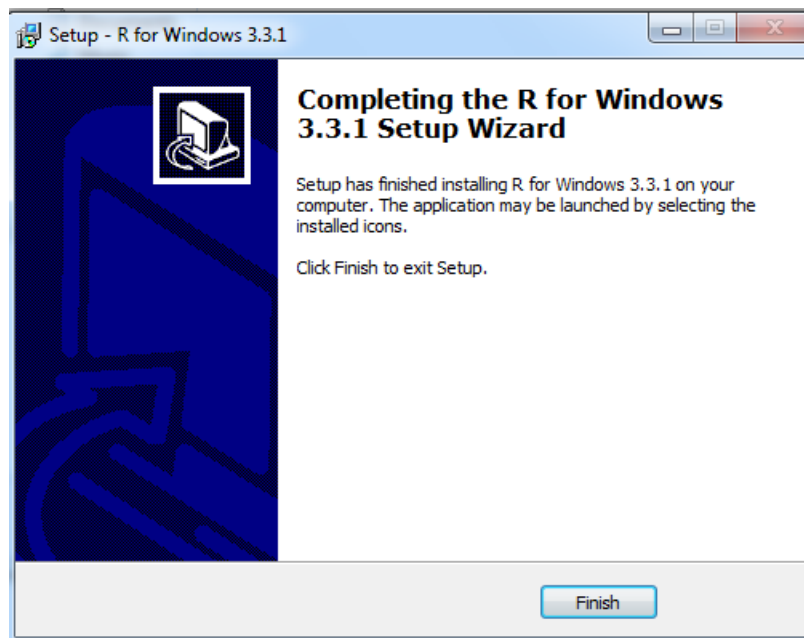
__19. In the *Select Additional Tasks* dialog, accept defaults and click **Next >**



Installation process begins.

Wait for the installation process to complete.

When installation is complete, you will be presented with the confirmation dialog.



__20. Click **Finish**.

Part 6 - Verify Installation

__1. Find the R short-cut created on the desktop and double click it.

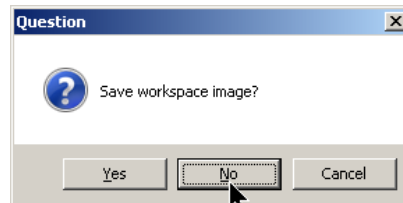


The *R GUI* console should open.

__2. Type **q()** in console and press **Enter**.

```
> q()
```

__3. In the *Question* dialog that opens, click **No**.



Installation and verification steps are complete.

Part 7 - Installing RStudio Desktop v.1.1.383 on Windows

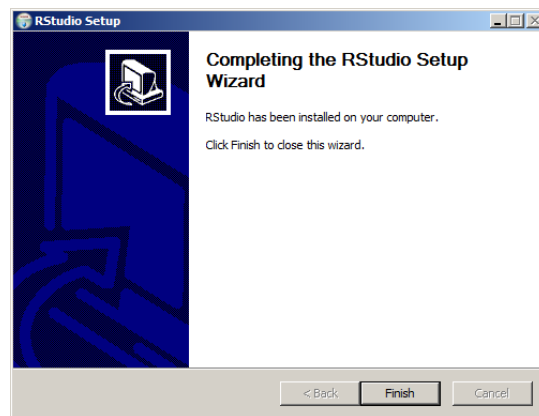
Note: The prerequisite for installing this package is the presence of the R package version 2.11.1 (or higher) on the target system (as per *R-3.3.1-win-32bit.odt* document).

- __1. On the Student computer, log in as the user who will be using this software in the class
- __2. From the **C:\Software\RStudio\R** directory, run **RStudio-1.1.383.exe**
- __3. If prompted with the Windows system *User Account Control* dialog, click **Yes**
- __4. On the *RStudio Setup Welcome* Screen, click **Next >**
- __5. In the *Choose Install Location* dialog, enter **c:\Software\R** for the destination folder and click **Next >**
- __6. In the *Choose Start Menu Folder* dialog, accept defaults and click **Install**

Installation process begins.

Wait for the installation process to complete.

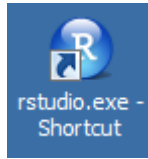
When installation is complete, you will be presented with the confirmation dialog.



- __7. Click **Finish**

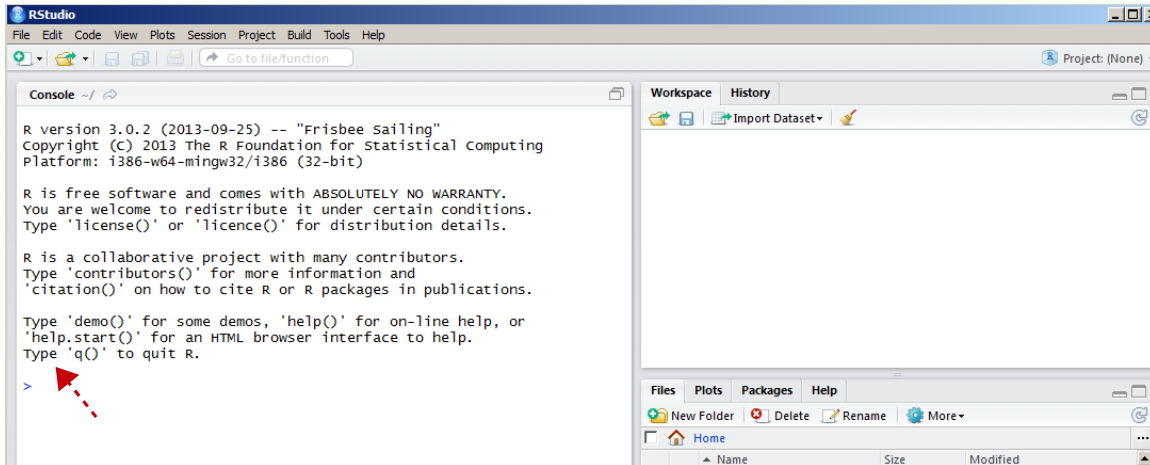
Part 8 - Verify Installation

- __1. Create a Desktop shortcut pointing to the **C:\Software\R\bin\rstudio.exe** folder



2. Click the **RStudio** Desktop short-cut

The RStudio IDE opens.



3. In the *Console* window on the left hand side, type in **q()** and press **Enter**

RStudio closes.

Installation and verification steps are complete.

Part 9 - Summary

You have successfully installed the software for this course!

If you have any question please contact us by email at support@webagesolutions.com

From US and Canada call: 1-877-812-8887 ext. 26

International call: 416-406-3994 ext. 26