

WA2588 Advanced Angular Programming

Classroom Setup Guide

Web Age Solutions Inc.

Table of Contents

Part 1 - Minimum Hardware Requirements.....	3
Part 2 - Minimum Software Requirements	3
Part 3 - Software Provided.....	3
Part 4 - Instructions.....	4
Part 5 - Installing Node.js 5.4.1.....	4
Part 6 - Summary.....	8

Part 1 - Minimum Hardware Requirements

- 3GB RAM minimum, 4 GB + recommended
- 10 GB in the hard disk
- Internet connection

Part 2 - Minimum Software Requirements

- Windows OS: Windows 7 / 10, Windows Server 2012.
- Latest Google Chrome browser
- Notepad+ *
- Nodejs *

* - indicates software provided as part of the courseware.

Part 3 - Software Provided

You will receive the following file:

- **WA2588.ZIP**

All other software listed under Minimum Software Requirements is either commercially licensed software that you must provide or software that is freely available off the Internet.

Part 4 - Instructions

__1. Make sure the account that you are using to install the software has administrative privileges and the student using this machine will have the same rights.

__2. Extract the **ZIP** file to C:\

__3. Review that the following folders were created:

- C:\LabFiles\
- C:\Software\
- C:\Software\Nodejs.5.4.1
- C:\Software\NotepadPlus\

__4. Make sure the C:\Software and C:\LabFiles folders are **writable** by the students, if they are read-only then the software won't work and students will have problems during the labs.

__5. Download and install the latest Google Chrome browser from:

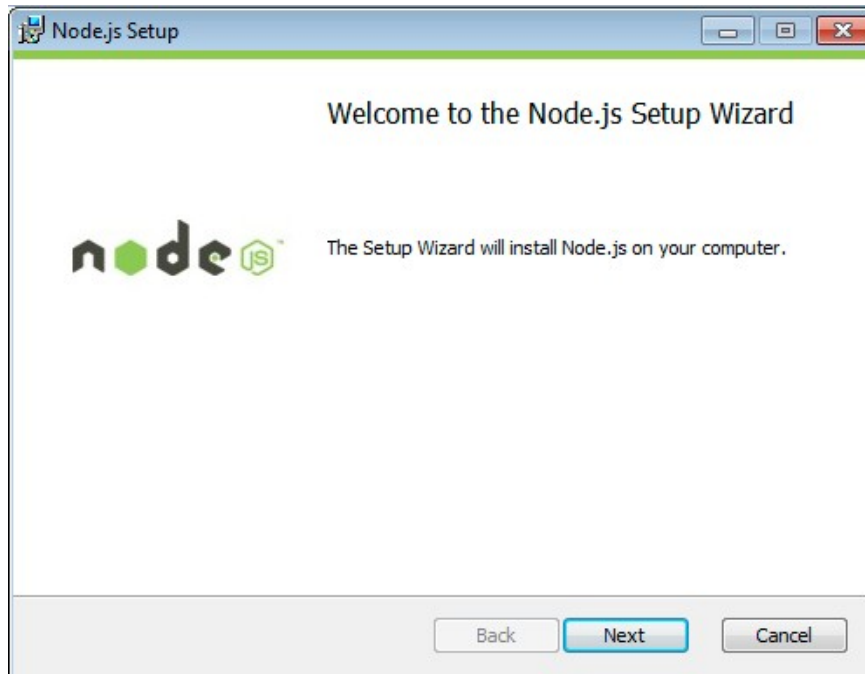
<https://www.google.com/intl/en/chrome/browser>

Part 5 - Installing Node.js 5.4.1

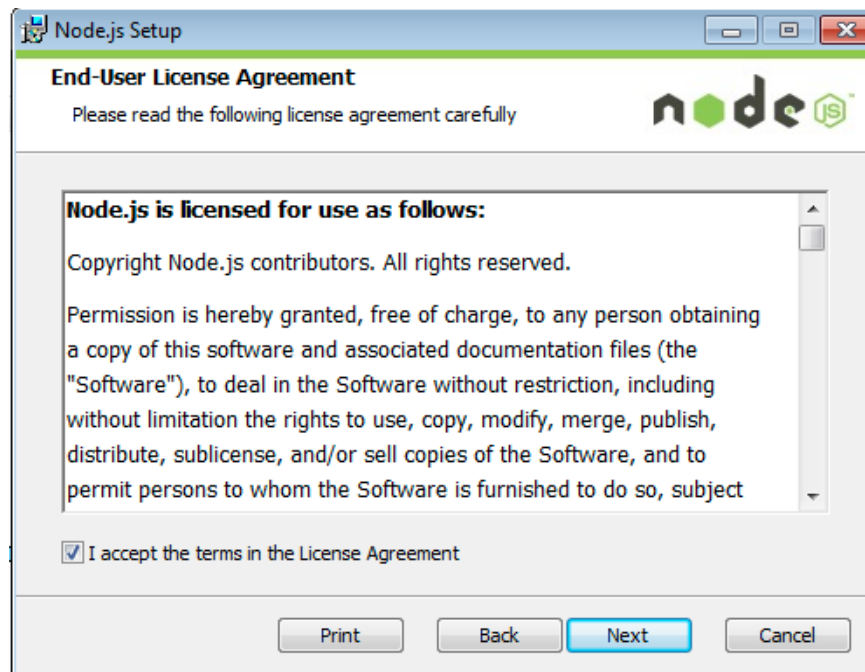
__1. Open C:\Software\Nodejs.5.4.1

__2. Double click **node-v5.4.1-x86.msi** to begin installation.

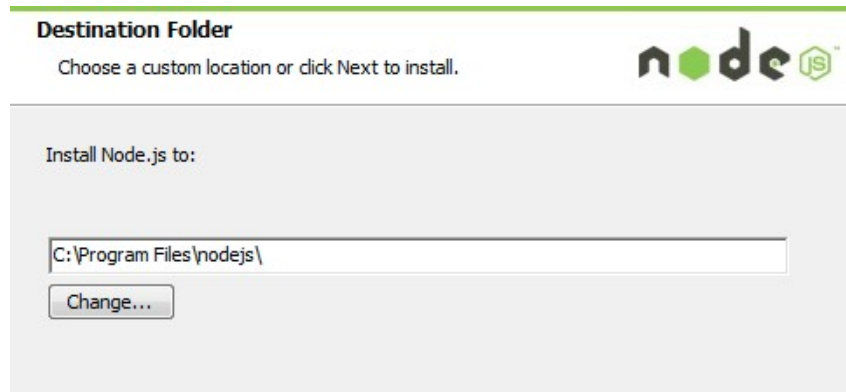
__3. Click **Next**.



__4. Check **I accept the terms...** and click **Next**.

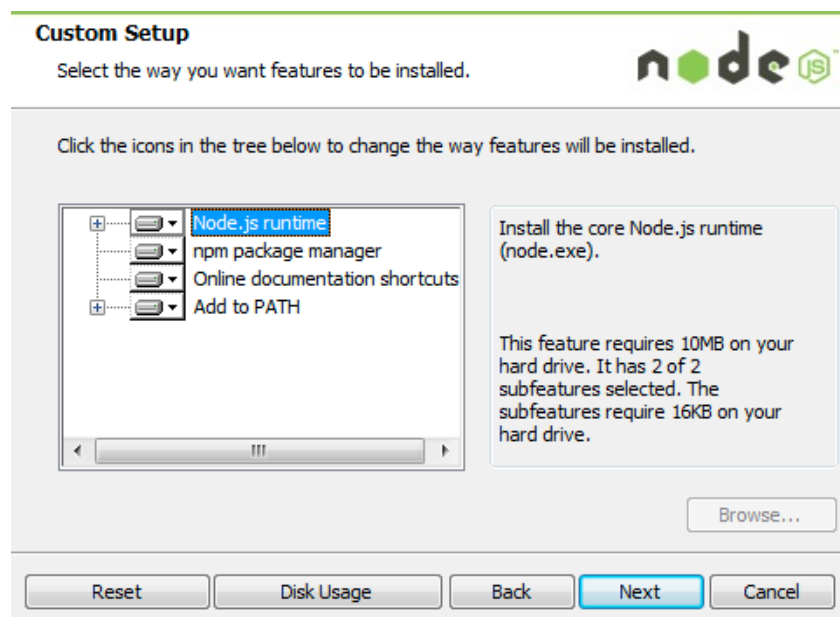


__5. Accept default destination folder and click **Next**.

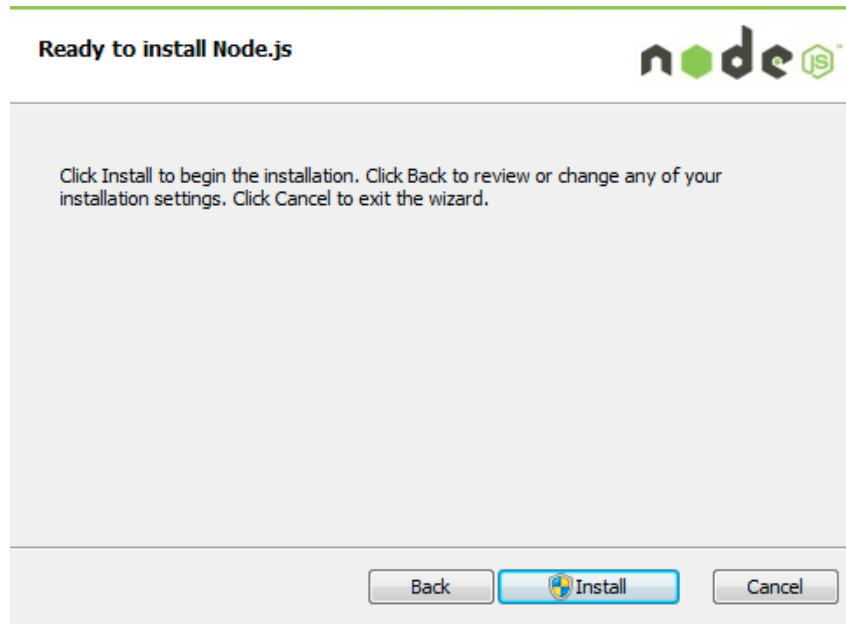


Note: Your installation location may be slightly different. Accept whatever the default is.

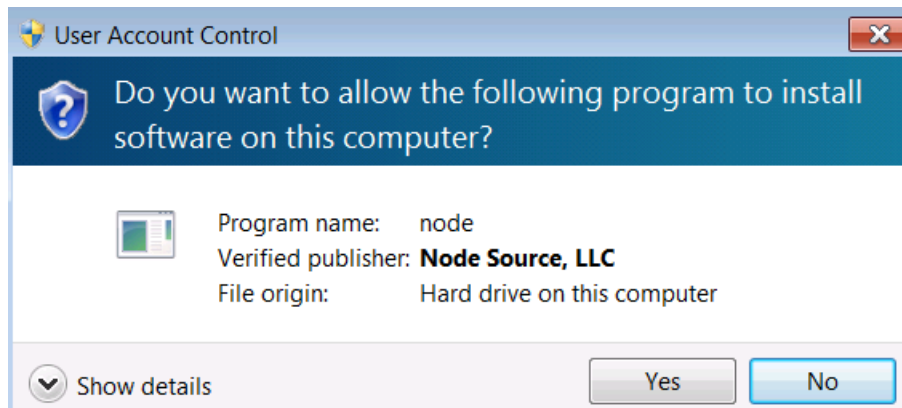
__6. Accept default package selection. Click **Next**.



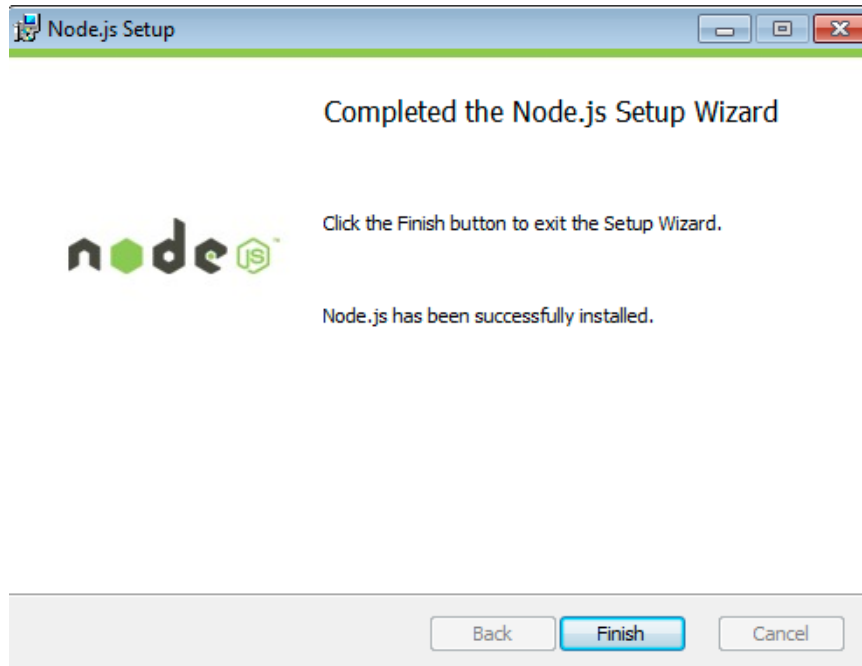
__7. Click **Install**.



__8. A popup window may open asking to install the software. Click Yes to continue.



__9. Click **Finish**.



Installation verification of Node.js

__1. Open a command prompt window.

__2. Enter the command:

```
node --version
```

__3. Make sure that you see **v5.4.1** as the output.

```
C:\Users\wasadmin>node --version
v5.4.1
```

__4. Close all.

Part 6 - Summary

You have successfully installed the software for this course!

If you have any question please contact us by email at support@webagesolutions.com

From US and Canada call: 1-877-812-8887 ext. 26

International call: 416-406-3994 ext. 26