

# **WA2533 Introduction to Angular Programming**

## **Classroom Setup Guide**

**Web Age Solutions Inc.**

## Table of Contents

Part 1 - Minimum Hardware Requirements.....	3
Part 2 - Minimum Software Requirements .....	3
Part 3 - Software Provided.....	3
Part 4 - Instructions.....	4
Part 5 - Nginx.....	5
Part 6 - Installing Node.js 5.4.1.....	6
Part 7 - Summary.....	10

## **Part 1 - Minimum Hardware Requirements**

- 3GB RAM minimum, 4 GB + recommended
- 10 GB in the hard disk
- Internet connection

## **Part 2 - Minimum Software Requirements**

- Windows OS: Windows 7 / 10, Windows Server 2012.
- Latest Google Chrome browser
- nginx \*
- Notepad+ \*
- Nodejs \*

\* - indicates software provided as part of the courseware.

## **Part 3 - Software Provided**

You will receive the following file:

- **WA2533.ZIP**

All other software listed under Minimum Software Requirements is either commercially licensed software that you must provide or software that is freely available off the Internet.

## Part 4 - Instructions

\_\_1. Make sure the account that you are using to install the software has administrative privileges and the student using this machine will have the same rights.

\_\_2. Extract the **ZIP** file to C:\

\_\_3. Review that the following folders were created:

- C:\LabFiles\
- C:\Software\
- C:\Software\nginx-1.4.3\
- C:\Software\Nodejs.5.4.1
- C:\Software\NotepadPlus\

\_\_4. Make sure the C:\Software and C:\LabFiles folders are **writable** by the students, if they are read-only then the software won't work and students will have problems during the labs.

\_\_5. Download and install the latest Google Chrome browser from:

<https://www.google.com/intl/en/chrome/browser>

## Part 5 - Nginx

1. **Disable any service using Port 80 to be able to run Nginx, if you have IIS or other service running, stop and disable them.**

2. Switch to the user that the students will use during the course.

3. Open the Command Prompt window and type in the following command at the prompt and press **ENTER** (execute the command):

```
cd C:\Software\nginx-1.4.3
```

This command will change directory to where the *nginx* web server resides (represented by the *nginx.exe* file).

4. Start the nginx web server by executing the following command:

```
start nginx
```

This command will launch the *nginx* web server that starts listening on port 80. Allow access if the Firewall window appear.

5. If you are prompted for the admin password, enter it to allow the software to run.

6. Open Google Chrome browser and navigate to **http://localhost**

You should see the *nginx* welcome page.

### **Welcome to nginx!**

If you see this page, the nginx web server is successfully installed and working. Further configuration is required.

For online documentation and support please refer to [nginx.org](http://nginx.org).  
Commercial support is available at [nginx.com](http://nginx.com).

*Thank you for using nginx.*

7. Close Chrome browser.

8. In the Command Prompt window where you started the *nginx* web server, type in

the following command at the prompt and press **ENTER**:

```
nginx -s stop
```

This command will stop the web server.

\_\_9. Switch back to the admin user.

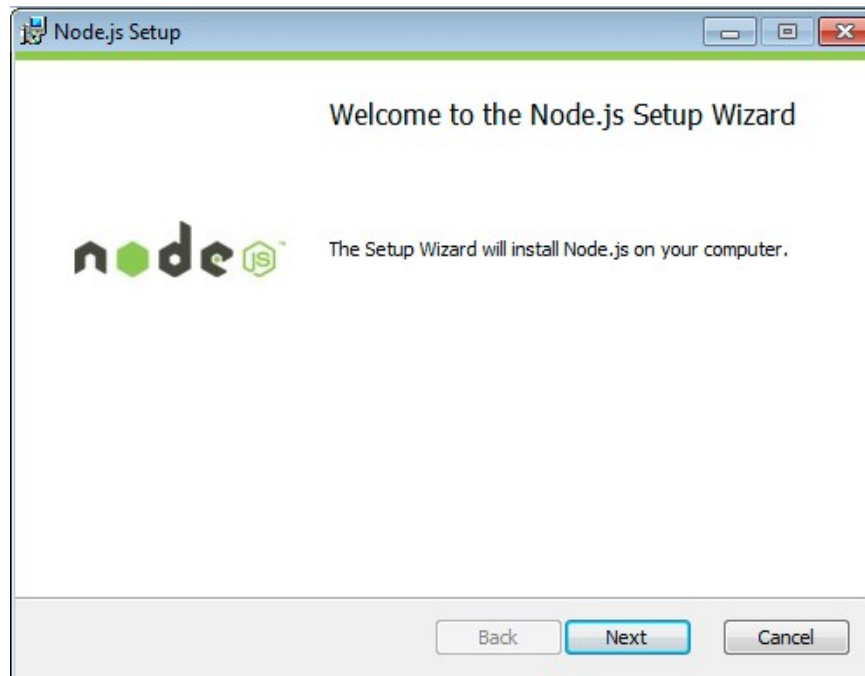
Nginx is installed.

## Part 6 - Installing Node.js 5.4.1

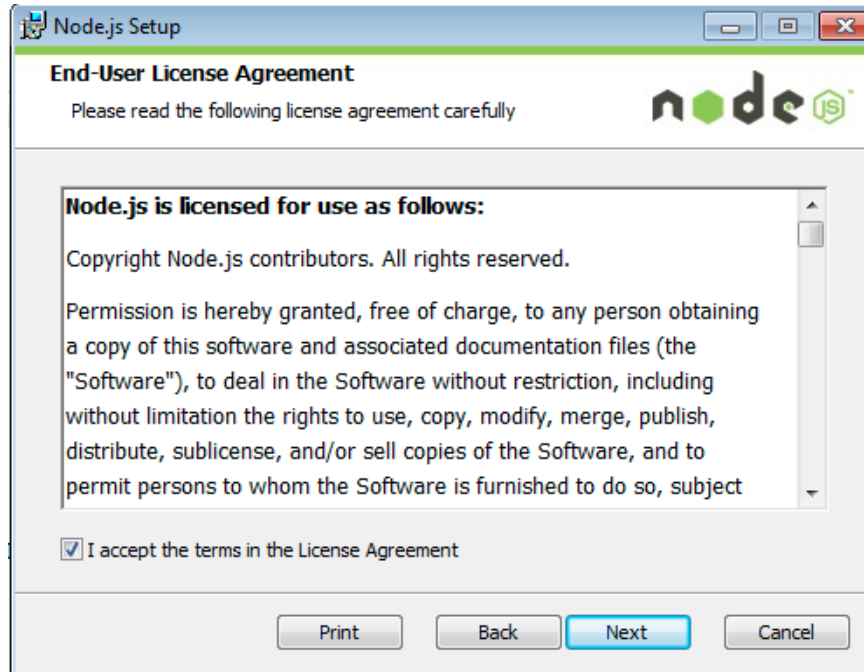
\_\_1. Open **C:\Software\Nodejs.5.4.1**

\_\_2. Double click **node-v5.4.1-x86.msi** to begin installation.

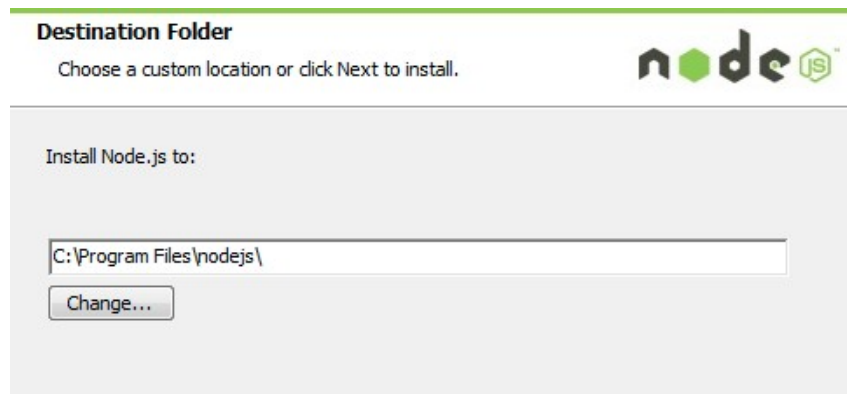
\_\_3. Click **Next**.



\_\_4. Check **I accept the terms...** and click **Next**.

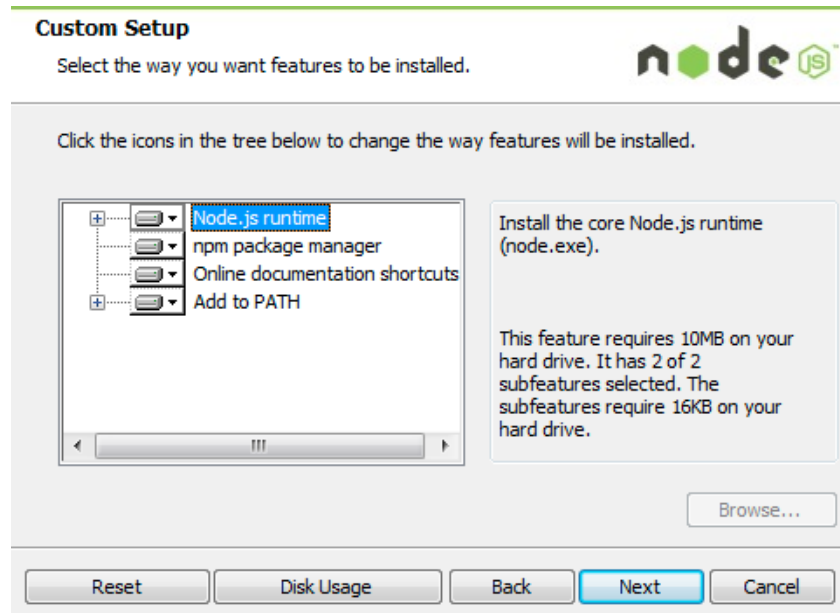


\_\_5. Accept default destination folder and click **Next**.

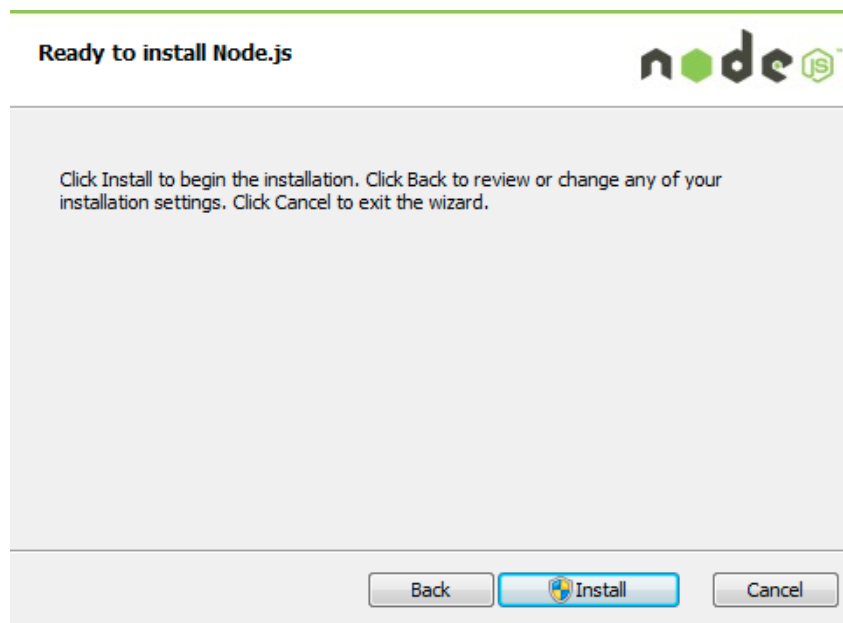


**Note:** Your installation location may be slightly different. Accept whatever the default is.

\_\_6. Accept default package selection. Click **Next**.

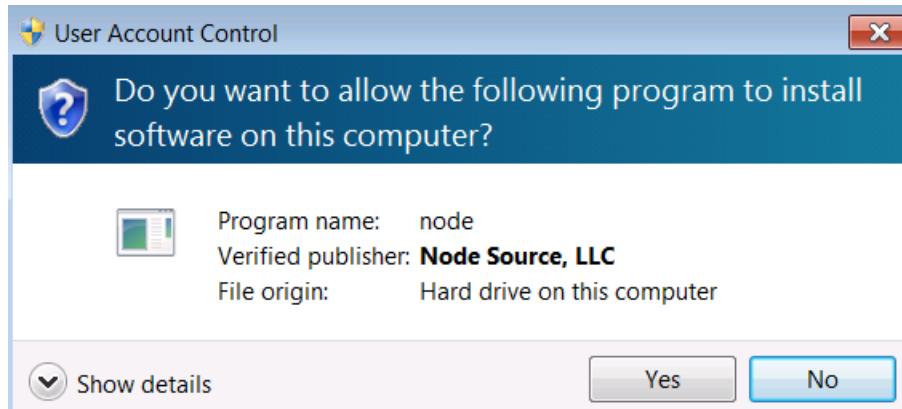


\_\_7. Click **Install**.

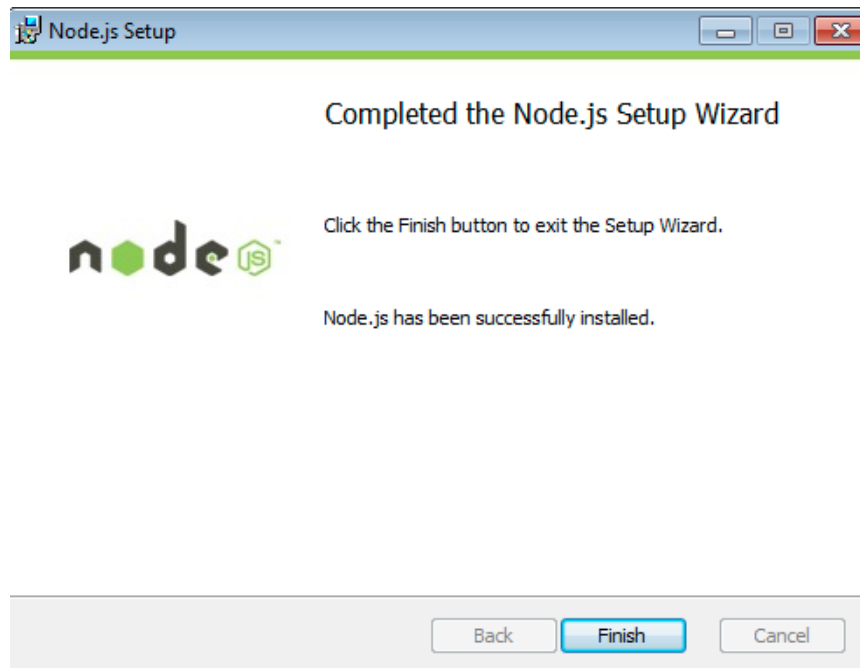


\_\_8. A popup window may open asking to install the software. Click Yes to continue.





\_\_9. Click **Finish**.



### Installation verification of Node.js

\_\_1. Open a command prompt window.

\_\_2. Enter the command:

```
node --version
```

\_\_3. Make sure that you see **v5.4.1** as the output.

```
C:\Users\wasadmin>node --version
v5.4.1
```

\_\_4. Close all.

## **Part 7 - Summary**

**You have successfully installed the software for this course!**

If you have any question please contact us by email at [support@webagesolutions.com](mailto:support@webagesolutions.com)

From US and Canada call: 1-877-812-8887 ext. 26

International call: 416-406-3994 ext. 26