

# **WA2488 JavaScript Changes with ECMAScript 2015**

**Classroom Setup Guide**

**Web Age Solutions Inc.**

## Table of Contents

Part 1 - Minimum Software Requirements .....	3
Part 2 - Software Provided.....	3
Part 3 - Instructions.....	3
Part 4 - Installing JDK 7 Update 45.....	5
Part 5 - Verification of JDK 7 Update 45.....	10
Part 6 - Installing Node.js 4.0.0.....	12
Part 7 - Summary.....	16

## Part 1 - Minimum Software Requirements

- Windows OS: Windows Vista / 7.
- Latest Google Chrome browser
- Java 7 \*
- MongoDB \*
- NodeJS 4.0.0 \*

\* - indicates software provided as part of the courseware.

## Part 2 - Software Provided

You will receive the following file:

- **WA2488.ZIP**

All other software listed under Minimum Software Requirements is either commercially licensed software that you must provide or software that is freely available off the Internet.

## Part 3 - Instructions

**1. Login using the account that the students will use during the course and make sure the account that you are using to install the software has administrative privileges and is the same account that the student will use during the course.**

**2. Extract the ZIP file to C:\**

**3. Review that the following folders were created:**

- **C:\LabFiles\**
- **C:\Software\**
- **C:\Software\mongodb\**
- **C:\Software\NodeJS4.0.0**
- **C:\Software\NotepadPlus**

\_\_4. Review that the following files were created:

- **C:\Software\jdk-7u45-windows-i586.exe**

\_\_5. Download and install the latest Google Chrome browser from:

<https://www.google.com/intl/en/chrome/browser>

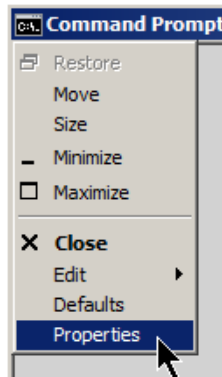
\_\_6. Create a folder on the local file-system named **c:\RW\**

\_\_7. Create a shortcut to the Windows Command Prompt onto the desktop.



\_\_8. Double click the Command Prompt shortcut to open the Command Prompt window.

\_\_9. In the Command Prompt window, click the black icon in the top left-hand corner and select **Properties** from the context menu.



The Properties dialog opens.

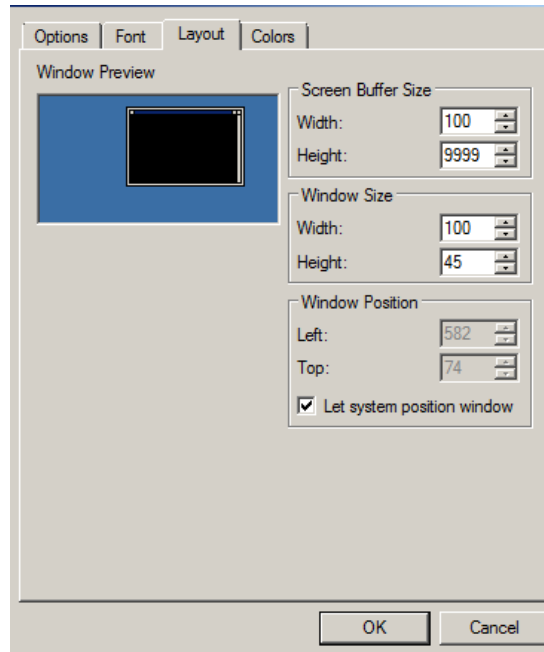
\_\_10. In the Properties dialog, check the **Quick Edit Mode** check box.

**Note:** This option allows a user to copy and paste text in the command prompt using mouse actions instead of an edit menu.

\_\_11. Click the **Layout** tab.

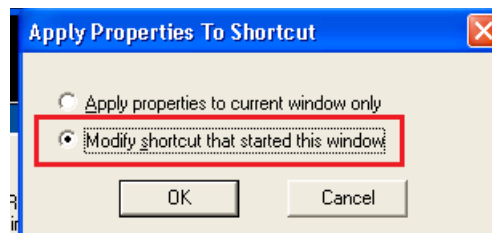
\_\_12. In the *Layout* tab, enter **100** for *Width* property (for both *Width* text windows in the

*Layout* tab window), **9999** for the *Height* of the *Screen Buffer Size* property, and **45** for the *Height* property of the *Window Size* property.



\_\_13. Click **OK** to close the Properties dialog.

\_\_14. If an *Apply Properties to Shortcut* dialog appears, select **Modify shortcut that started this window** and click **OK**.



## Part 4 - Installing JDK 7 Update 45

\_\_1. Make sure there is no previous Java version already installed on the system. You can check this by using the Windows “Add/Remove Programs” utility. For the best compatibility with the labs it is suggested that all previous versions of Java be uninstalled before proceeding with these instructions. If this is an issue, please contact the setup support person for the course.

\_\_2. From the **C:\Software** directory run the following file:

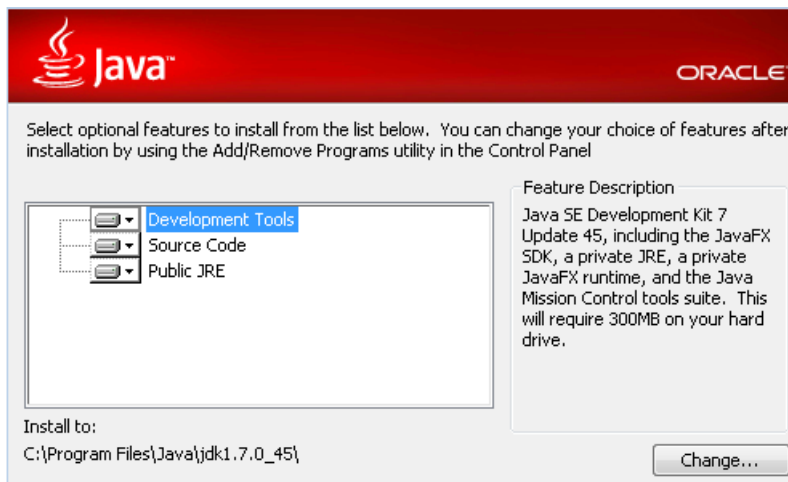
jdk-7u45-windows-i586.exe

**Note:** If using prompted by a security prompt allow the installation to continue.

3. When the initial step of the setup appears, press the **Next** button.

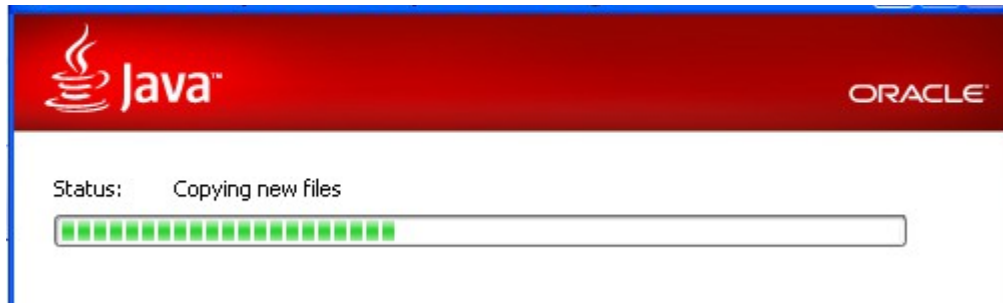


4. Leave the defaults for installation location and options, and press the **Next** button.



**Note:** The installation directory may be slightly different for example  
*C:\Program Files (x86)\Java\jdk1.7.0\_45*

The installation will begin installing files.



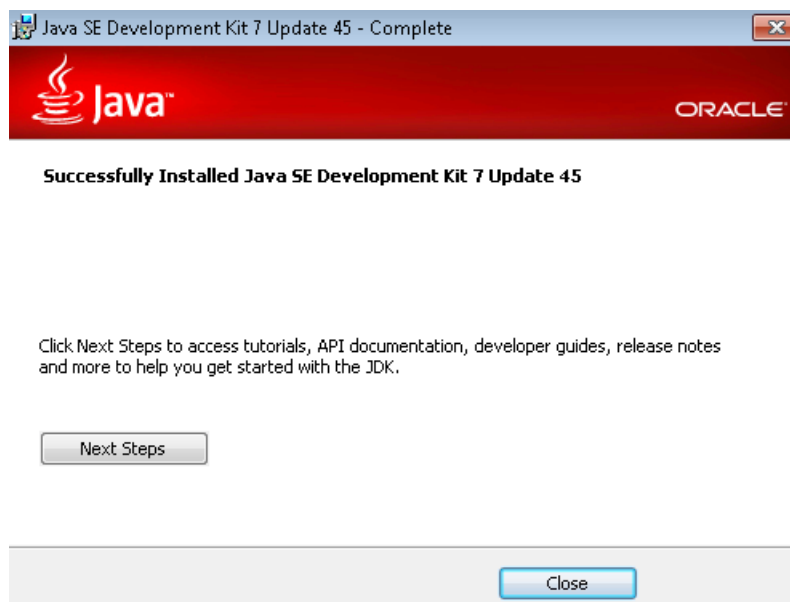
\_\_5. The Destination Folder will appear, leave the default folder and click **Next**.



**Note:** The installation directory may be slightly different for example  
*C:\Program Files (x86)\Java\jdk1.7.0\_45*

Wait until the software is completely installed.

\_\_6. Click **Close**.



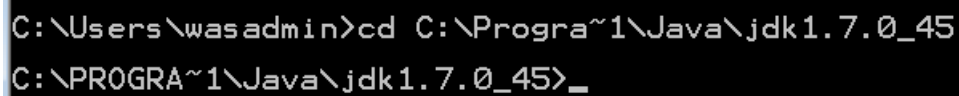
\_\_7. Close any browser that appears asking to register the JDK software.

**Set the Environment variables.**

\_\_1. Open a Command Prompt. You can do this with '**Start → Programs → Accessories → Command Prompt**'.

\_\_2. Use the 'cd' command to attempt to switch to the following directory. This will verify the presence of a directory used later so make sure you do not get any errors about not being able to “find the path specified”.

```
cd C:\Progra~1\Java\jdk1.7.0_45
```



```
C:\Users\wasadmin>cd C:\Progra~1\Java\jdk1.7.0_45
C:\PROGRA~1\Java\jdk1.7.0_45>_
```

**Note:** The installation directory may be slightly different depending your operating system. You may need to use the following directory instead of the one listed above:

**C:\Progra~2\Java\jdk1.7.0\_45**

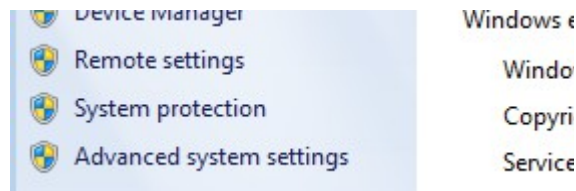
Some of the remaining steps will use the slightly different directory.

\_\_3. Make sure you can reach the java folder and remember the value entered because you will use this value in the following steps.

\_\_4. Close the command prompt window.

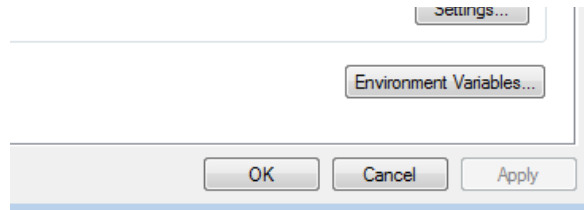
\_\_5. In the Windows Start Menu, right-click on the **Computer** link in the right-hand side of the Start panel, and then select **Properties**.

\_\_6. Click on **Advanced system settings**.



\_\_7. The system will display the **System Properties** dialog. Select the **Advanced** tab and click **Environment Variables**.



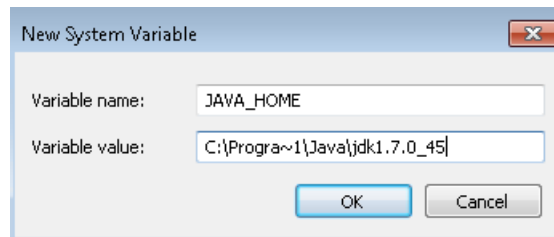


\_\_8. Under the **System Variables** list, click the **New** button.

\_\_9. Enter **JAVA\_HOME** as Variable name.

\_\_10. As Variable value enter the following. This should be the value you verified in the *Set the Environment variables section - step 2*.

**C:\Progra~1\Java\jdk1.7.0\_45**



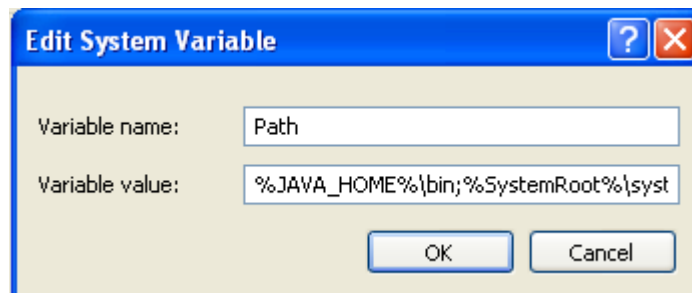
**Note:** If you are using a 64-bit OS you may have to use **C:\Progra~2\Java\jdk1.7.0\_45**

\_\_11. Click **OK** to create the variable.

\_\_12. From the *System Variables* list, select **Path** and click **Edit**.

\_\_13. At the beginning of the line enter the following. Make sure to include the semi-colon on the end:

**%JAVA\_HOME%\bin;**



\_\_14. Click **OK**.

\_\_15. Click **OK** to close the *Environment Variables* window.

\_\_16. Click **OK** to close the *System Properties* window.

## Part 5 - Verification of JDK 7 Update 45

\_\_1. Open a Windows command prompt. You can do this by selecting '**Start -> Run**', entering '**cmd**', and then pressing the **OK** button. Make sure it is a new command prompt and not one open previously.

\_\_2. Enter the following command:

```
echo %PATH%
```

Make sure you see the Java 'bin' directory listed at the beginning as shown below.

```
C:\Users\wasadmin>echo %PATH%
C:\Progra~1\Java\jdk1.7.0_45\bin;C:\Windows\system32;C:\W
m32\wbem;C:\Windows\System32\WindowsPowerShell\v1.0\
C:\Users\wasadmin>_
```

Note: You may see **C:\Progra~2\Java\jdk1.7.0\_45**

\_\_3. Enter the following command:

```
java -version
```

Make sure you see the response shown below.

```
C:\Users\wasadmin>java -version
java version "1.7.0_45"
Java(TM) SE Runtime Environment (build 1.7.0_45-b18)
Java HotSpot(TM) Client VM (build 24.45-b08, mixed mode, sharing)
```

Troubleshooting: If you get an error message means that your Environment variable was incorrectly entered, go back and fix the values.

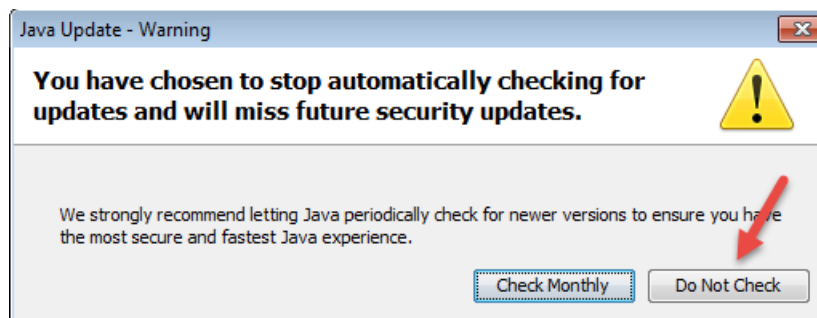
\_\_4. Enter the following command:

javac

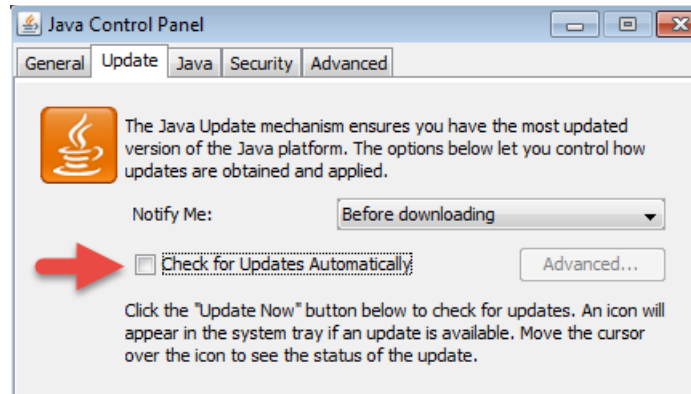
Verify that you get the options to run the Java compiler:

```
C:\Users\wasadmin>javac
Usage: javac <options> <source files>
where possible options include:
-g                Generate all debugging info
-g:none          Generate no debugging info
-g:{lines,vars,source} Generate only some debugging info
-nowarn          Generate no warnings
-verbose         Output messages about what the compiler is doing
```

- \_\_5. Close the command prompt window and any extra windows that are open.
- \_\_6. From Start, expand **All Programs > Java** then right click **Check for Updates** and select **Run as Administrator**.
- \_\_7. Select the **Update** tab.
- \_\_8. Un-check the **Check for updates automatically** check box.
- \_\_9. A popup will open, click **Do not check**.



- \_\_10. Make sure the box is not checked and click **OK**.



\_\_ 11. Click **OK** to close the Java Control Panel.

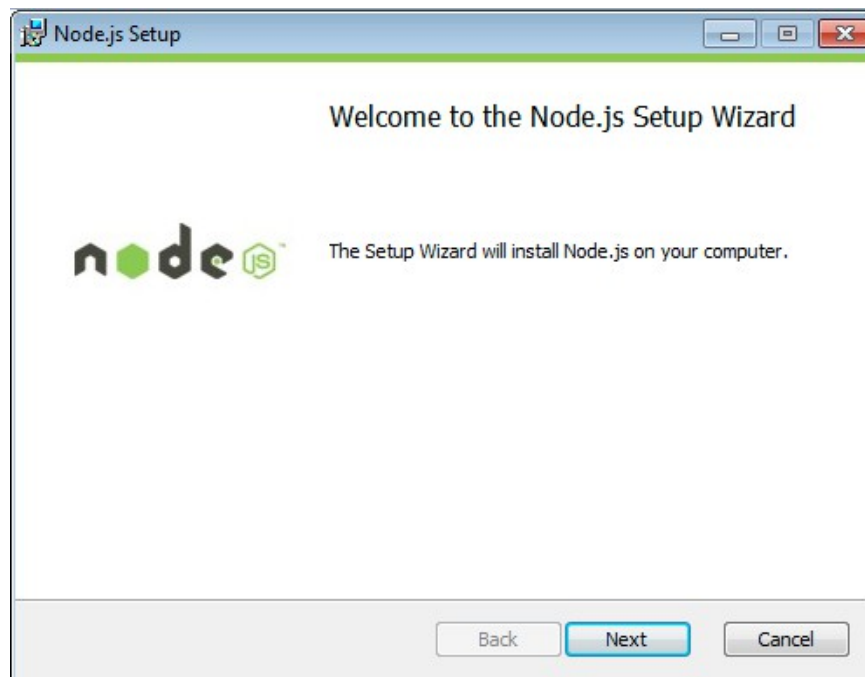
Java has been installed.

## Part 6 - Installing Node.js 4.0.0

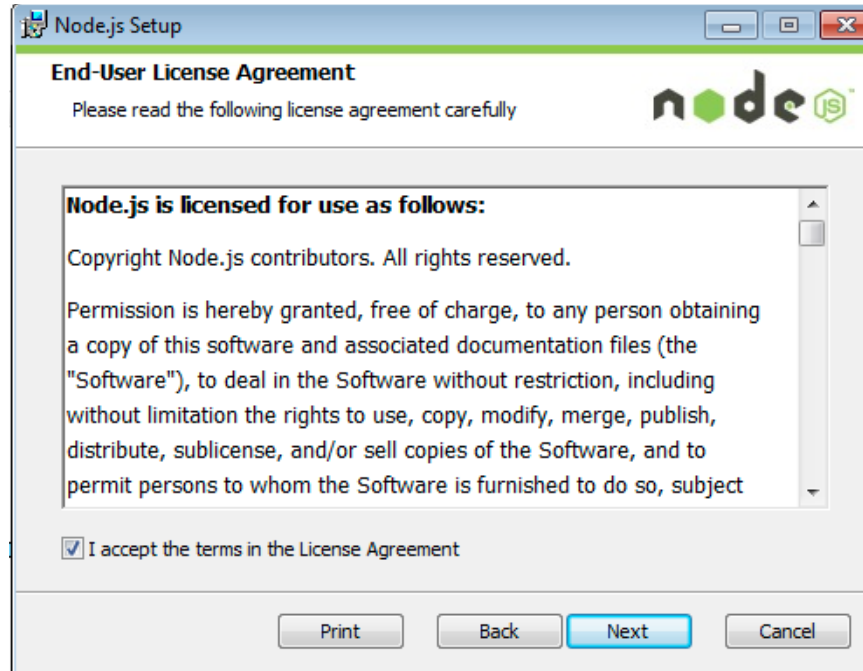
\_\_ 1. Open `C:\Software\NodeJS4.0.0`

\_\_ 2. Double click **node-v4.0.0-x86.msi** to begin installation.

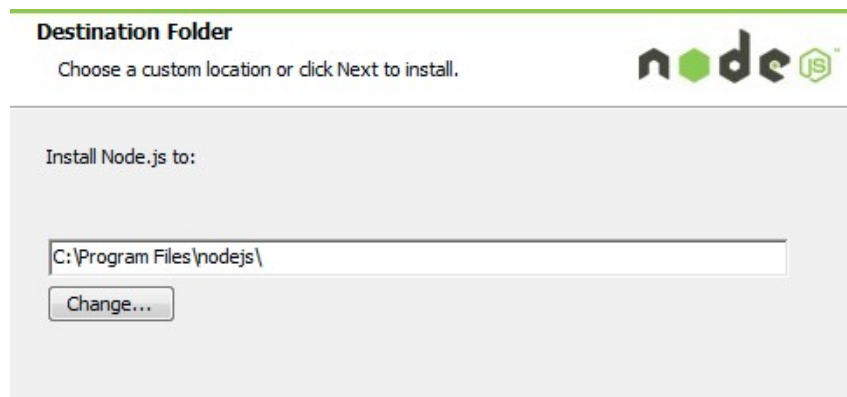
\_\_ 3. Click **Next**.



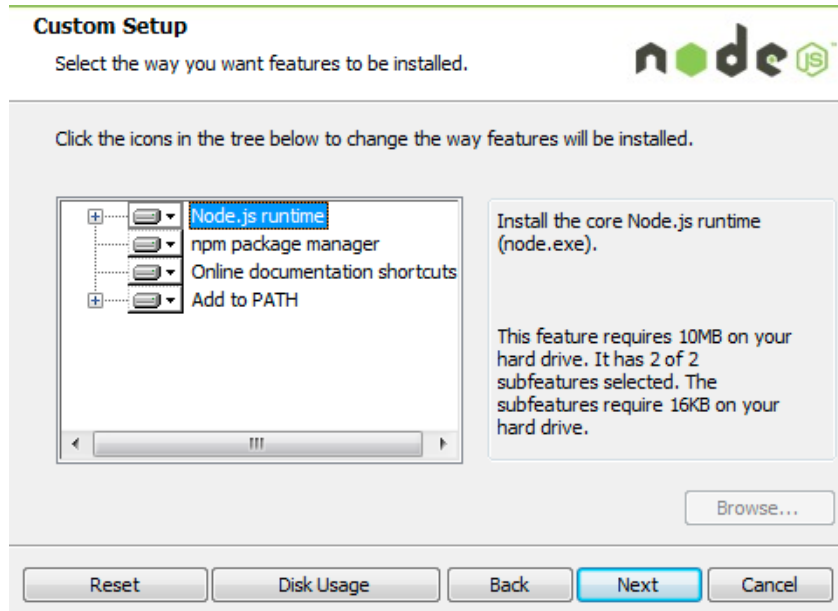
\_\_4. Check **I accept the terms...** and click **Next**.



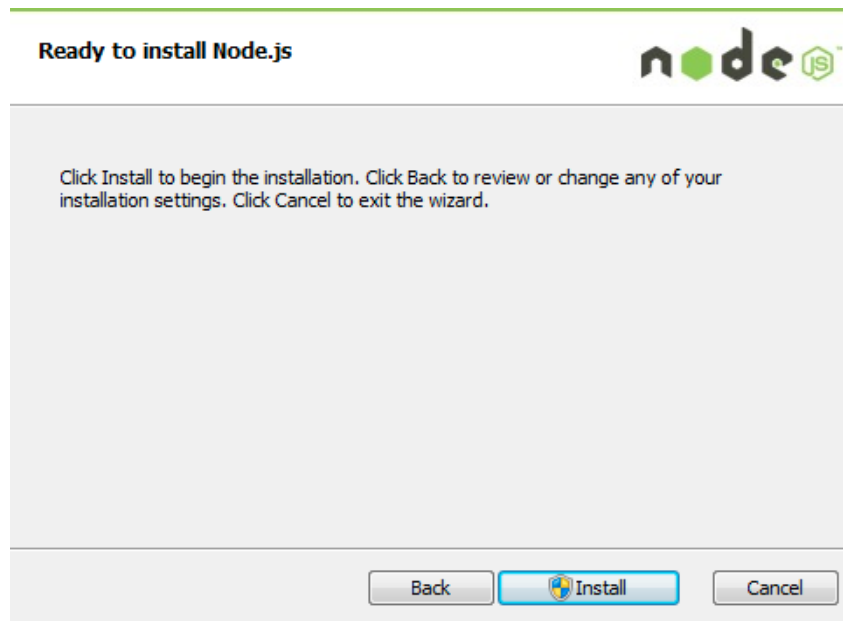
\_\_5. Accept default destination folder and click **Next**.



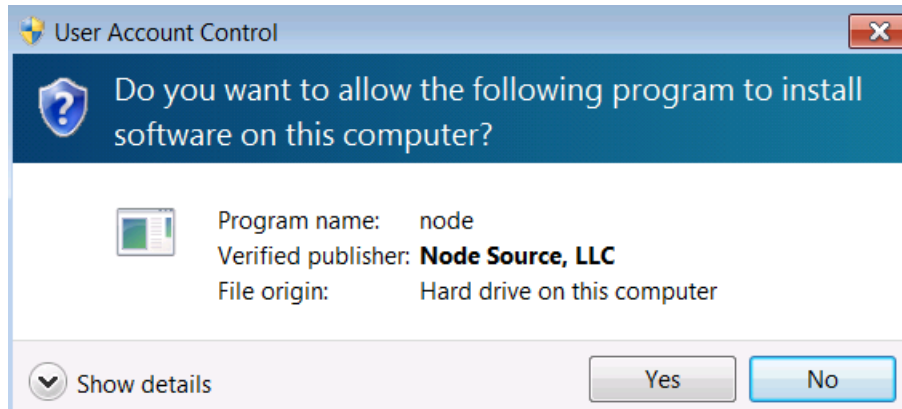
\_\_6. Accept default package selection. Click **Next**.



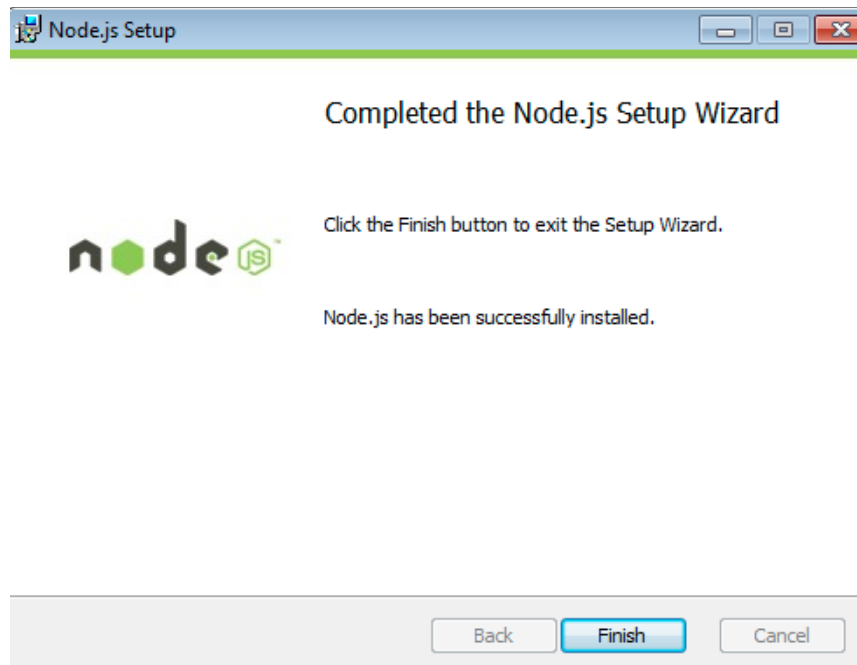
\_\_7. Click **Install**.



\_\_8. A popup window may open asking to install the software. Click Yes to continue.



\_\_9. Click **Finish**.



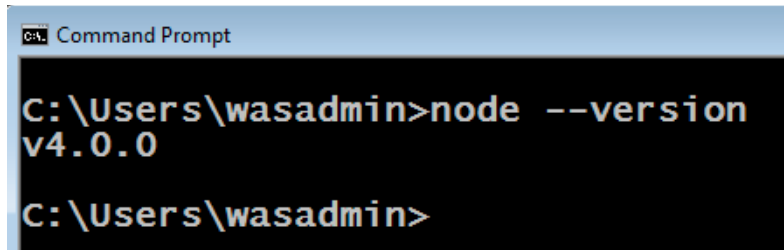
### Installation verification of Node.js 4.0.0

\_\_1. Open a command prompt window.

\_\_2. Enter the command:

```
node --version
```

\_\_3. Make sure that you see **v4.0.0** as the output.



```
cmd. Command Prompt
C:\Users\wasadmin>node --version
v4.0.0
C:\Users\wasadmin>
```

\_\_4. Close all.

## **Part 7 - Summary**

**You have successfully installed the software for this course!**

If you have any question please contact us by email at [support@webagesolutions.com](mailto:support@webagesolutions.com)

From US and Canada call: 1-877-812-8887 ext. 26

International call: 416-406-3994 ext. 26

You have successfully installed the software for this course.