

**WA2487 WebSphere Portal 8.5
Programming**

Classroom Setup Guide

Web Age Solutions Inc.

Table of Contents

Part 1 - Minimum Hardware Requirements	3
Part 2 - Minimum Software Requirements	3
Part 3 - Software Provided.....	4
Part 4 - Important Ghosting or Imaging Information.....	5
Part 5 - Preparation.....	5
Part 6 - Installing Java SE 6 JRE Update 26.....	5
Part 7 - Installing AnyClient File Transfer Application.....	6
Part 8 - Installing Rational Application Developer 9.1.1 Trial with WebSphere Portal 8.5.....	9
Part 9 - Verification of WebSphere Portal 8.5 installation.....	17
Part 10 - Installing Rational Application Developer v9.1.1 Trial.....	18
Part 11 - Modify File Permissions.....	23
Part 12 - Verification of Rational Application Developer v9.1.1 Trial installation.....	30

Part 1 - Minimum Hardware Requirements

- 64-bit CPU to meet the minimum requirements of the operating system being used
 - Some software will only install on a 64-bit system
- 4 GB RAM minimum, 6 GB recommended.
- 30GB free hard disk space (preferably in C: drive).

Part 2 - Minimum Software Requirements

- One of the following Windows platforms:
 - Windows 7 - 64-bit
 - Windows 8 - 64-bit
 - Windows Server 2012 - 64-bit
- Adobe Acrobat Reader
- Zip extraction utility
- BOTH of the following web browsers are required for the class
 - Internet Explorer 9+ (with latest fixes applied)
 - Firefox 3.5+
- AnyClient File Transfer client *
- IBM Rational Application Developer v9.1.1 Trial *
- IBM WebSphere Portal Server 8.5 *

* - indicates software provided as part of the courseware.

Part 3 - Software Provided

You will receive the following files:

- WA2487_1.ZIP
- WA2487_2.ZIP
- WA2487_3.ZIP
- WA2487_4.ZIP
- WA2487_5.ZIP
- WA2487_6.ZIP

All other software listed under Minimum Software Requirements is either commercially licensed software that you must provide or software that is freely available off the Internet.

Part 4 - Important Ghosting or Imaging Information

Some of the software installed for this course will not function after changing the computer hostname. As such, cloning or imaging should not be used on a fully installed system.

You can save time by extracting the contents of the USB memory stick to C:\ on a clean OS install (no other software installed) and then imaging that hard drive. After restoring the image to the other computers and changing the hostnames, you can then install the software on each computer individually by following the instructions that are detailed later in this document.

Part 5 - Preparation

- __ 1. Login as an account that has administrative privileges.
- __ 2. If possible, disable all firewall notifications to speed up installation.
- __ 3. **Extract the 6 zips directly to C:**
- __ 4. Review that the following folders were created:
 - C:\LabFiles
 - C:\Software\AnyClient
 - C:\Software\RAD911\RAD
 - C:\Software\RAD911\RAD_SETUP
 - C:\Software\WebSpherePortal8.5

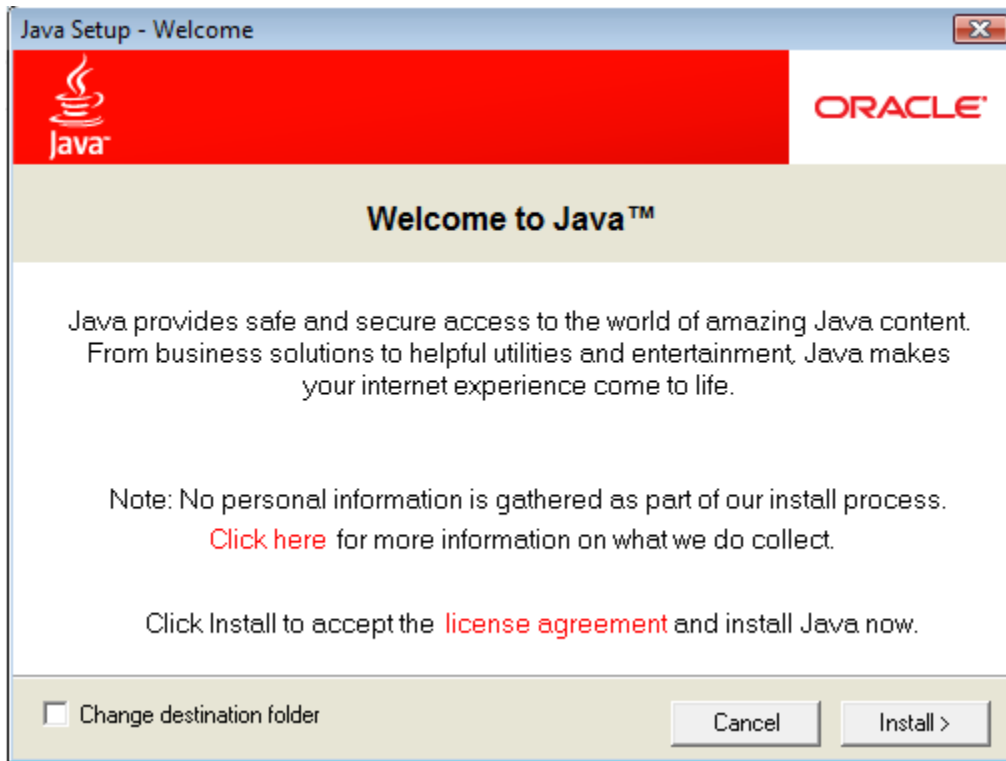
Part 6 - Installing Java SE 6 JRE Update 26

- __ 1. From the C:\Software directory run the following file:

`jre-6u26-windows-i586.exe`

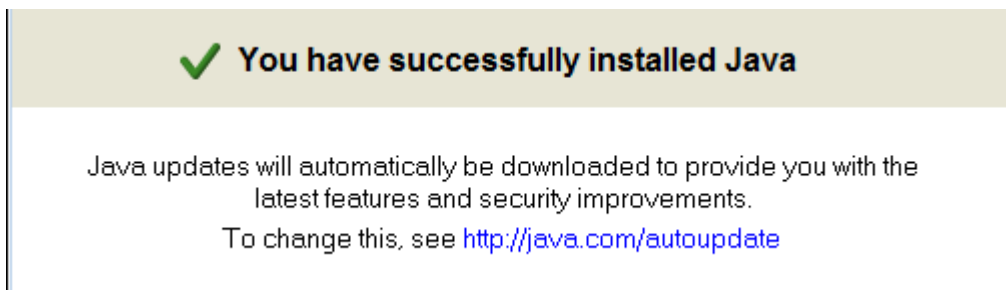
Note: If using prompted by a security prompt allow the installation to continue.

__2. After a few moments the installation screen will appear. Press the **Install** button to begin the installation.



__3. Wait while the software installs.

__4. Make sure you get a success message and click the **Close** button.



Part 7 - Installing AnyClient File Transfer Application

__1. Login as an administrative user if not already.

__2. Make sure that a Java environment has previously been installed as part of the class setup.

__3. From the **C:\Software\AnyClient** directory run the following file:

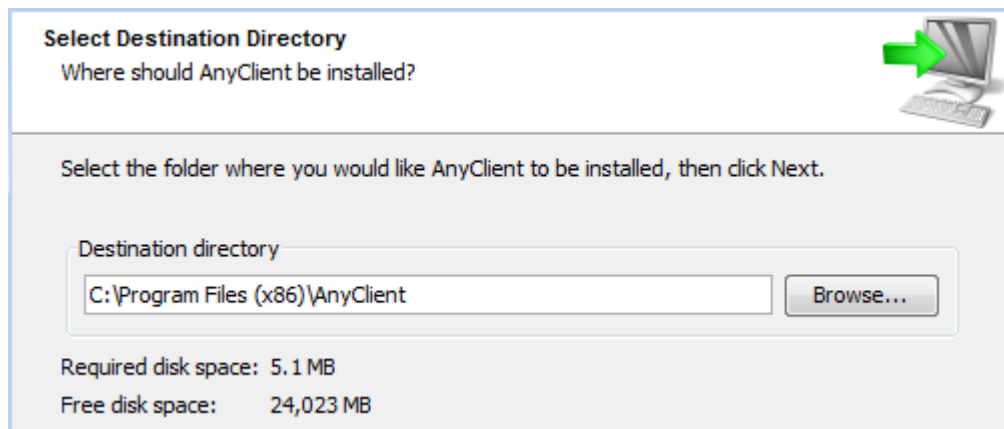
install.exe

Note: If using prompted by a security prompt allow the installation to continue.

__4. On the welcome page click the **Next** button.

__5. After a few moments the license agreement will appear. Accept the license and click the **Next** button.

__6. Leave the defaults for installation location and options, and press the **Next** button. Your destination directory may be slightly different depending in the version of Windows being used.



__7. Accept the defaults for creating a Start Menu shortcut and click the **Next** button.

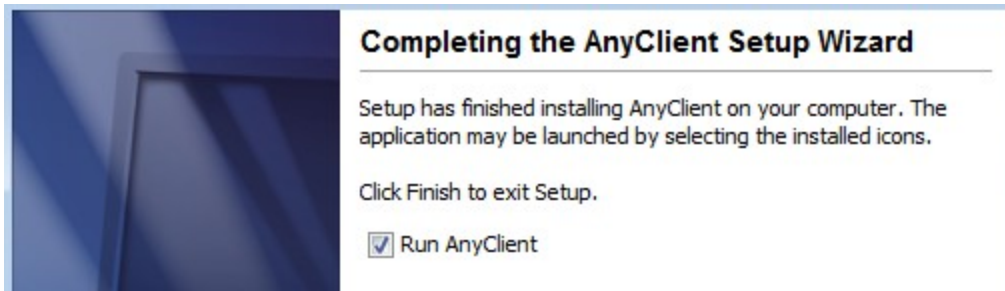
__8. Accept the default for creating a desktop icon and click the **Next** button.

Wait until the software is completely installed.

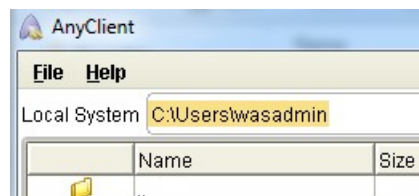
__9. Change to Never check for updates and click **Next**.



__10. Click **Finish**. This should automatically start the AnyClient program. Accept any security prompts if they appear when starting the program.



__11. Once you know the software starts select **File** → **Exit** to exit the AnyClient program.



AnyClient is now installed!

Part 8 - Installing Rational Application Developer 9.1.1 Trial with WebSphere Portal 8.5

Installing RAD 9.1.1 with Portal 8.5 involves two basic steps: installing Portal 8.5 and then installing RAD 9.1.1 itself. This document will outline all these steps.

Average time for installation of RAD 9.1.1 Trial with WebSphere Portal 8.5: 2 hours.

Note: If installing on Windows Vista, Windows 7, or Windows Server 2008 there will be several notes about special steps required on these platforms. Failure to include these additional steps will lead to an unusable installation.

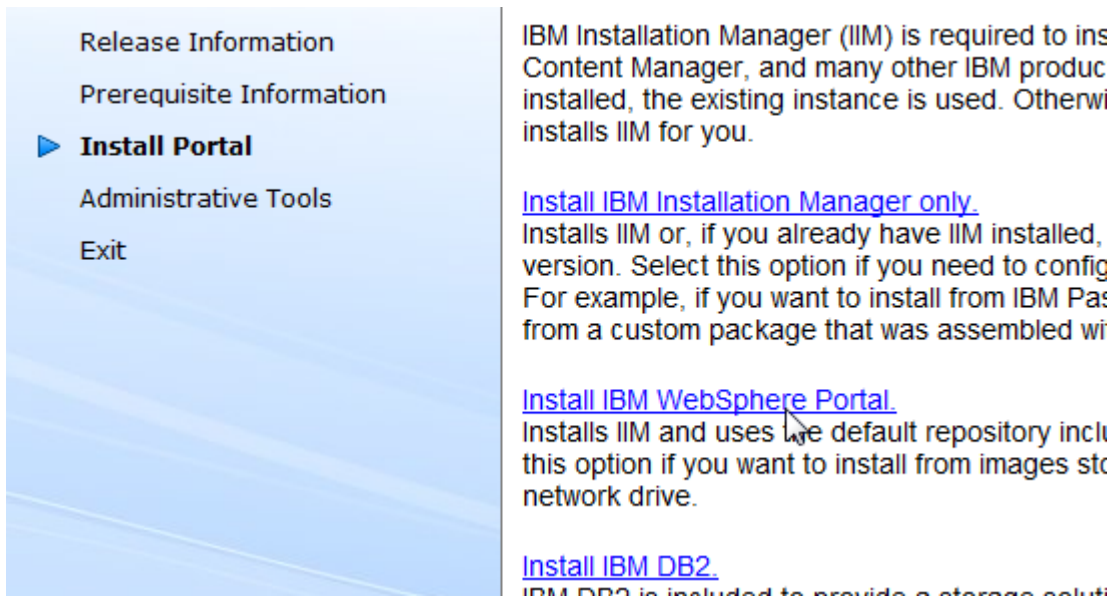
__1. Before you begin, shut down any running applications. The installation process is quite CPU/disk intensive.

__2. Make sure you are logged in as an account with administrative privileges. It is also suggested to turn off all Windows Firewall notifications as this will help to speed up the installation.

__3. From **C:\Software\WebSpherePortal8.5\Setup**, run **setup.exe** and allow any security prompts that appear. The installer will begin.

Note: Don't run the '**setup64.exe**' application even if you are on a 64-bit machine.

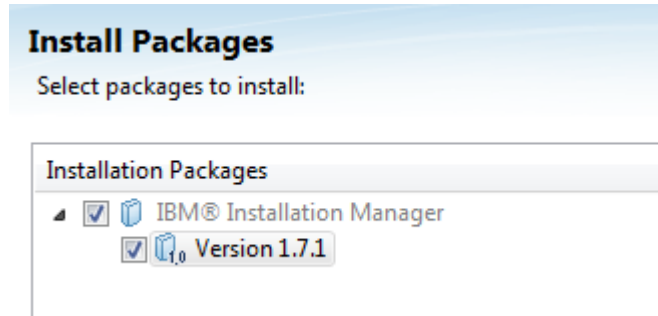
__4. Click **Install Portal** on the left and then the '**Install IBM WebSphere Portal**' on the right.



<p>Release Information</p> <p>Prerequisite Information</p> <p>▶ Install Portal</p> <p>Administrative Tools</p> <p>Exit</p>	<p>IBM Installation Manager (IIM) is required to install Content Manager, and many other IBM products. If IIM is already installed, the existing instance is used. Otherwise, the installer will install IIM for you.</p> <p>Install IBM Installation Manager only. Installs IIM or, if you already have IIM installed, updates the version. Select this option if you need to configure IIM. For example, if you want to install from IBM Product Images from a custom package that was assembled with the Product Images tool.</p> <p>Install IBM WebSphere Portal. Installs IIM and uses the default repository included with the Product Images. Select this option if you want to install from images stored on a network drive.</p> <p>Install IBM DB2. IBM DB2 is included to provide a storage solution for the Content Manager database.</p>
-----------------------------------------------------------------------------------------------------------------------------------	-------------------------------------------------------------------------------------------------------------------------------------------------------------------------------------------------------------------------------------------------------------------------------------------------------------------------------------------------------------------------------------------------------------------------------------------------------------------------------------------------------------------------------------------------------------------------------------------------------------------------------------------------------------------------------------------------------------------------------------------------------------------------------------------------------------------------------------------------------------------------------------------------------------------

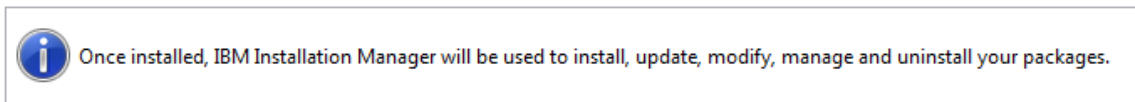
A new program – the **IBM Installation Manager** will launch. You will then be prompted to *Install Packages*.

__5. Make sure that version **1.7.1** of the '**IBM Installation Manager**' program is selected and click the **Next** button.



__6. Accept the terms of the license agreement and click the **Next** button.

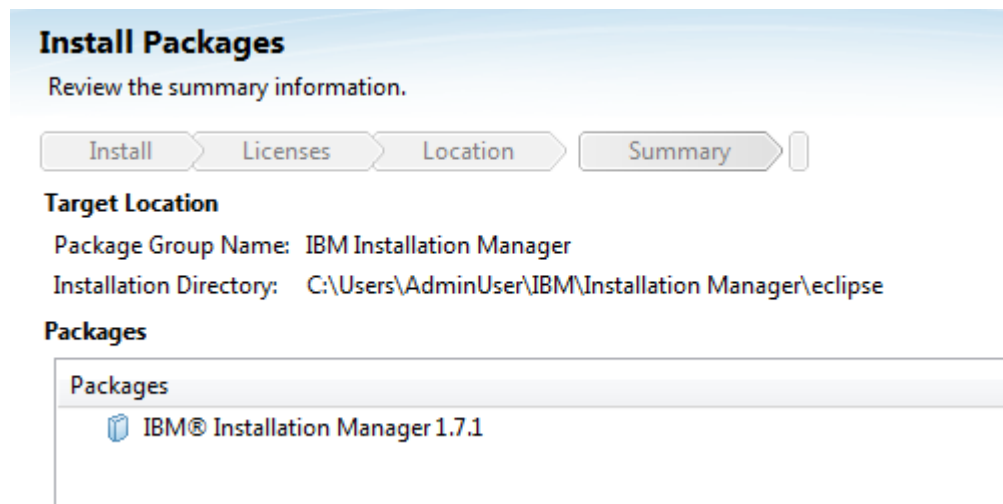
__7. Leave the default *Installation Manager Directory* and click **Next**.



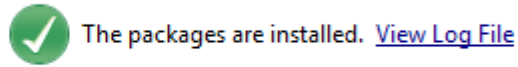
Installation Manager Directory: C:\Users\AdminUser\IBM\Installation Manager\eclipse

Note: Your default installation directory may vary.

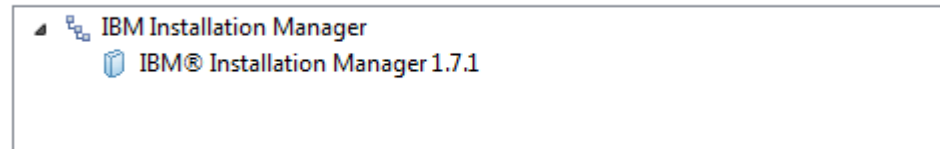
__8. On the *Summary* screen click the **Install** button to start the installation.



The *Installation Manager* will install. Eventually, it will complete.



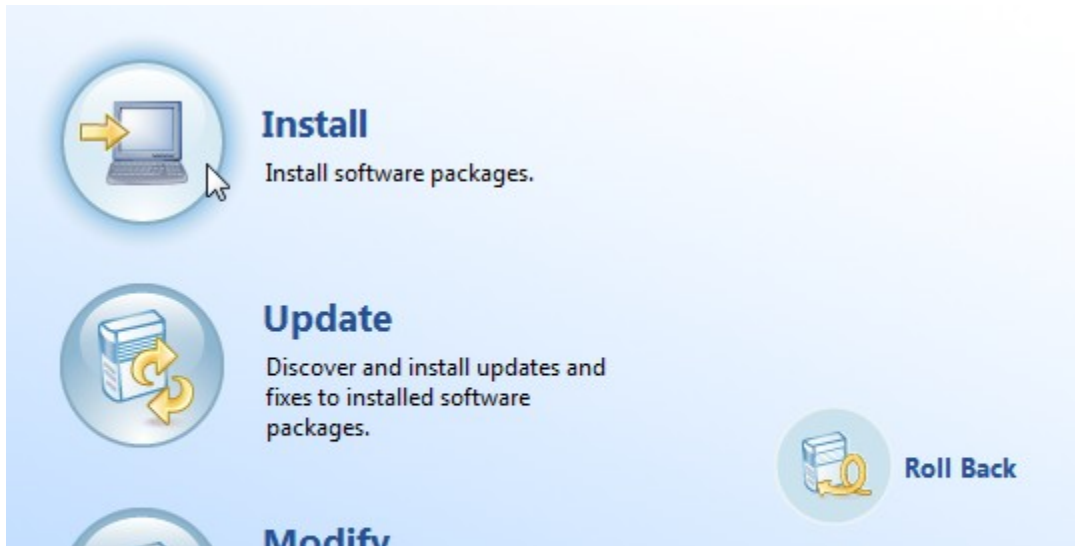
The following package was installed:



__9. Click **Restart Installation Manager**.

The **Installation Manager** will re-launch. You may need to switch between windows.

__10. From the main Installation Manager screen, click **Install**.



The *Install Packages* screen will appear.

__11. Select all 3 packages, **IBM WebSphere Application Server Network Deployment**, **IBM WebSphere SDK Java Technology Edition** and **IBM WebSphere Portal Server** and click the **Next** button.

Install Packages
Select packages to install:

Installation Packages	Status
<input checked="" type="checkbox"/> IBM WebSphere Application Server Network Deployment <input checked="" type="checkbox"/> Version 8.5.5.2	Will be installed
<input checked="" type="checkbox"/> IBM WebSphere SDK Java Technology Edition (Optional) <input checked="" type="checkbox"/> Version 7.0.6.1	Will be installed
<input checked="" type="checkbox"/> IBM WebSphere Portal Server <input checked="" type="checkbox"/> Version 8.5.0.0	Will be installed

__12. Check the box for **IBM WebSphere Application Server Network Deployment 8.5.5.2** which will deploy all of the required fixes for WebSphere Portal and click the **Next** button.

Install Packages
Select the fixes to install.

Fixes
<input checked="" type="checkbox"/> IBM WebSphere Application Server Network Deployment 8.5.5.2 <input checked="" type="checkbox"/> 8.5.5.0-WAS-WASProd-IFP115756 8.5.5000.20140411_1012 <input checked="" type="checkbox"/> 8.5.5.2-WAS-WAS-IFP115581 8.5.5002.20140411_1052

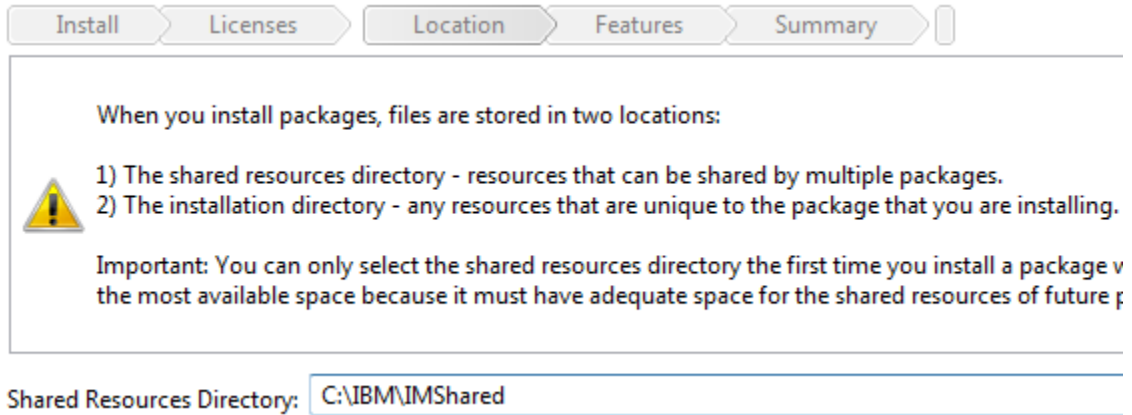
Note: If you get a warning about the operating system support you can ignore it and click the **Next** button.

__13. Accept the terms of the license agreement and click the **Next** button.

__14. **Change** the *Shared Resources Directory* to the value below:

Shared Resources Directory: **C:\IBM\IMShared**

__15. Click **Next** when your screen looks like shown below.

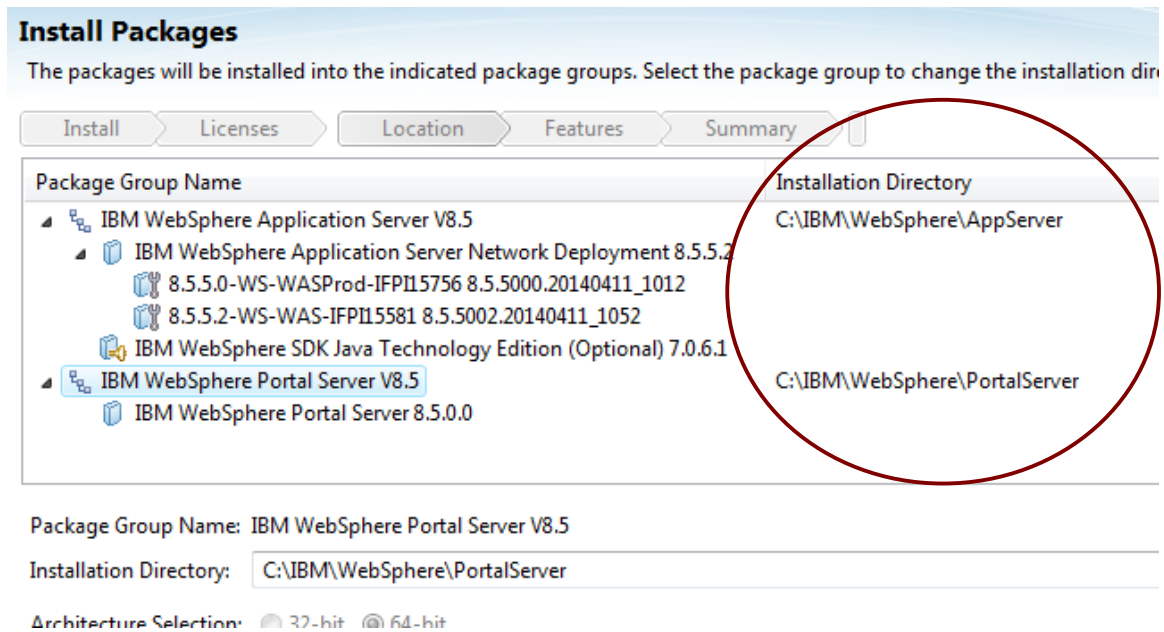


__16. Select each of the following entries from the 'Package Group Name' list and **modify** the '**Installation Directory**' to the value listed.

IBM WebSphere Application Server V8.5: **C:\IBM\WebSphere\AppServer**

IBM WebSphere Portal Server V8.5: **C:\IBM\WebSphere\PortalServer**

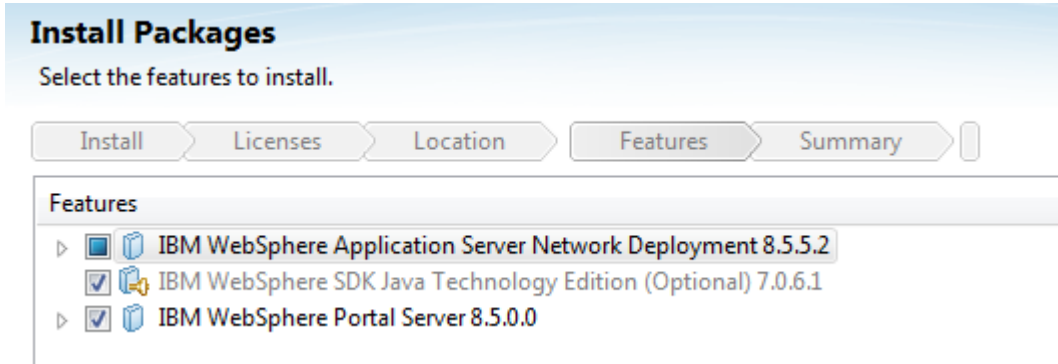
__17. Verify the installation locations as shown below and click the **Next** button.



Note: It is critical to modify the directories the products are installed to. Installing under 'Program Files' can cause permission issues with saving configuration changes.

__18. Leave the default language selection and click the **Next** button.

__19. Accept the default features to install and click the **Next** button.



Note: Your features screen may look slightly different.

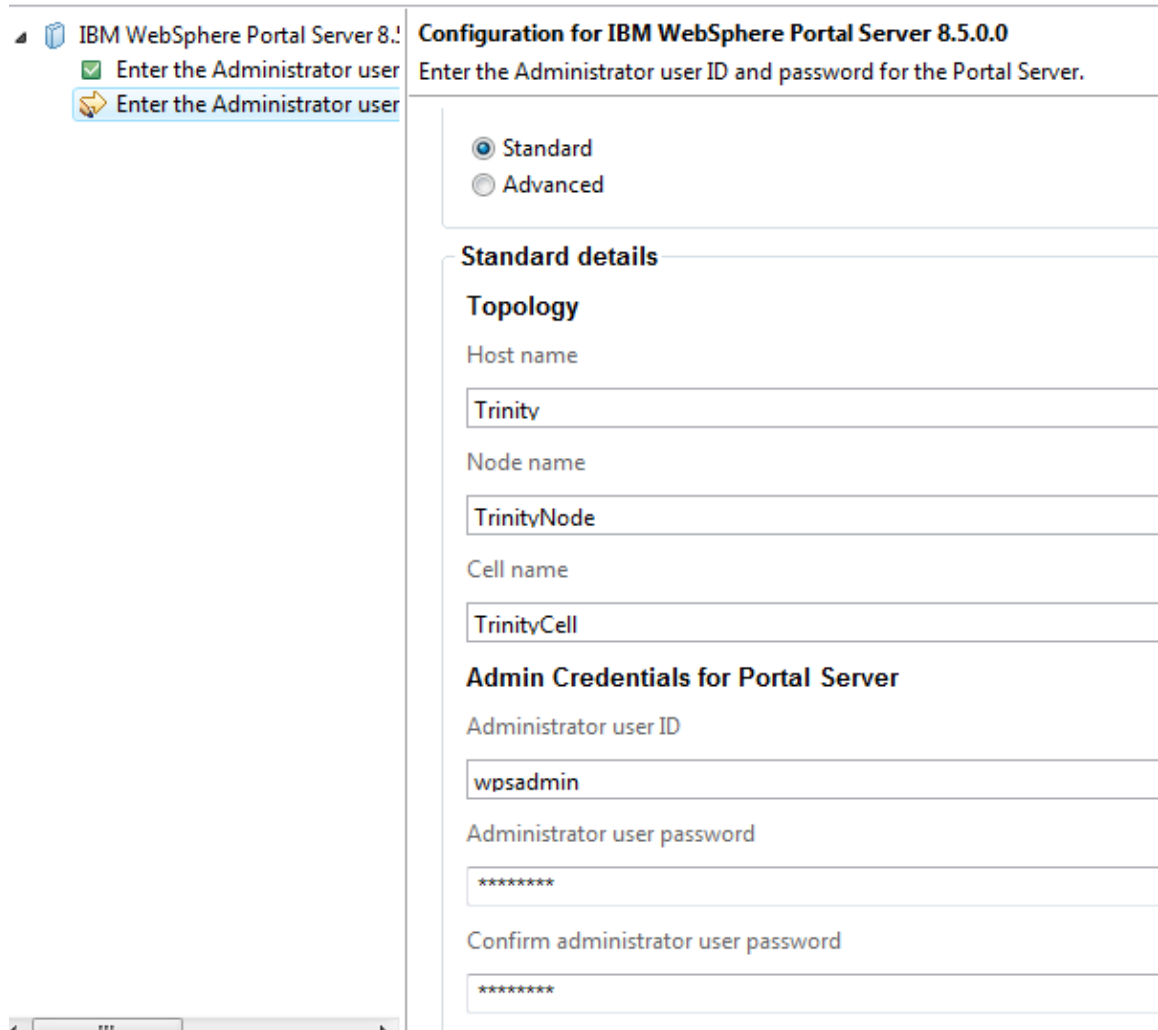
__20. If you get a Windows firewall warning, unblock the process from the firewall.

__21. Select the first '**Enter the Administrator user ID...**' on the left, and fill in **wpsadmin** for the **Administrator user ID** and both password fields. Do not click the Next button yet.



__22. Select the second 'Enter the Administrator user ID...' on the left, scroll down, and fill in **wpsadmin** for the **Administrator user ID** and both password fields.

Note: Also make sure the hostname is filled in with a value that is NOT 'localhost' or an IP address. If 'localhost' or an IP address does appear, you can either manually change it to the correct hostname of the machine or restart the Installation Manager after ensuring the computer is connected to a network. Restarting Installation Manager is suggested.



IBM WebSphere Portal Server 8.5.0.0 Configuration for IBM WebSphere Portal Server 8.5.0.0

Enter the Administrator user ID and password for the Portal Server.

Standard
 Advanced

Standard details

Topology

Host name
Trinity

Node name
TrinityNode

Cell name
TrinityCell

Admin Credentials for Portal Server

Administrator user ID
wpsadmin

Administrator user password


Confirm administrator user password

__23. Click the **Next** button once your configuration options match the last two steps.

__24. On the *Summary* page, check your installation options, especially the target installation directories, and click the **Install** button. If prompted by Windows security at any point allow or unblock the processes. WebSphere Portal will take quite a while to install.

Packages	Installation Directory
IBM WebSphere Application Server V8.5	C:\IBM\WebSphere\AppServer
IBM WebSphere Application Server Network Deployment 8.5.5.2	
8.5.5.0-WASProd-IFP115756 8.5.5000.20140411_1012	
8.5.5.2-WAS-WAS-IFP115581 8.5.5002.20140411_1052	
WebSphere Application Server Full Profile	
IBM WebSphere SDK for Java Technology Edition 6	
IBM WebSphere SDK Java Technology Edition (Optional) 7.0.6.1	
IBM WebSphere Portal Server V8.5	C:\IBM\WebSphere\PortalServer
IBM WebSphere Portal Server 8.5.0.0	
Portal Server Profile	

__25. Once WebSphere Portal installs successfully, select the '**None**' radio button for the program to launch and click the **Finish** button.

 The packages are installed. [View Log File](#)

IBM WebSphere Portal Server V8.5 installation is complete.
You can now access your Portal at: <http://Morpheus:10039/wps/portal>

The following packages were installed:

- IBM WebSphere Application Server V8.5
 - IBM WebSphere Application Server Network Deployment 8.5.5.2
 - 8.5.5.0-WASProd-IFP115756 8.5.5000.20140411_1012
 - 8.5.5.2-WAS-WAS-IFP115581 8.5.5002.20140411_1052
 - IBM WebSphere SDK Java Technology Edition (Optional) 7.0.6.1
- IBM WebSphere Portal Server V8.5
 - IBM WebSphere Portal Server 8.5.0.0

Which program do you want to start?

- Start the Configuration Wizard from
- Profile Management Tool to create a
- Profile Management Tool to create a
- None

__26. Select **File** → **Exit** in the Installation Manager if it is still open.

__27. Close the Portal launchpad if it is still open.

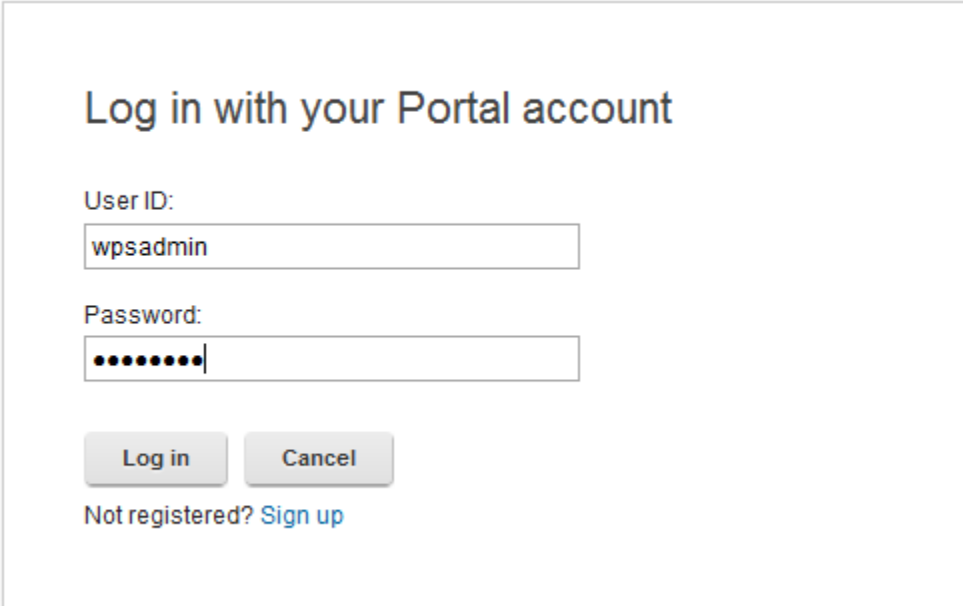
Part 9 - Verification of WebSphere Portal 8.5 installation

__1. Open a web browser to the following address:

`http://localhost:10039/wps/portal`

__2. Once the main portal page displays, at the top right click the '**Log In**' link. After a few moments the Portal login page should appear.

__3. Fill in a user ID and password of '**wpsadmin**' and press the **Log in** button.



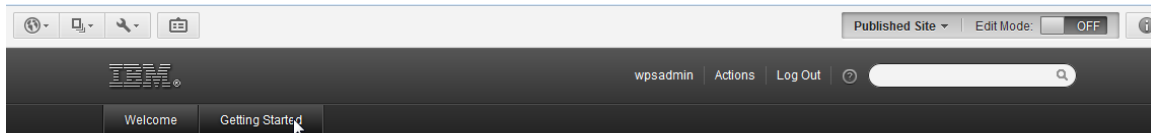
Log in with your Portal account

User ID:

Password:

Not registered? [Sign up](#)

__4. Make sure that you are logged in to the portal. You should see a new "Getting Started" tab appear and lots of buttons along the top for administrative actions.



__5. Click the **Logout** link on the right and close the browser.

__6. Close all windows.

__7. Restart the computer. This will automatically stop the WebSphere Portal server and improve the installation of RAD next.

Part 10 - Installing Rational Application Developer v9.1.1 Trial

__1. Login as the Windows administrative user that you used for the Portal installation.

__2. From C:\Software\RAD_SETUP, run **launchpad.exe**. The installer will begin.

Note: If installing on Windows Vista/7/2008/8 right click the **launchpad.exe** program and select '**Run as Administrator**' and accept any security prompts.

__3. Click **Windows Installation**.

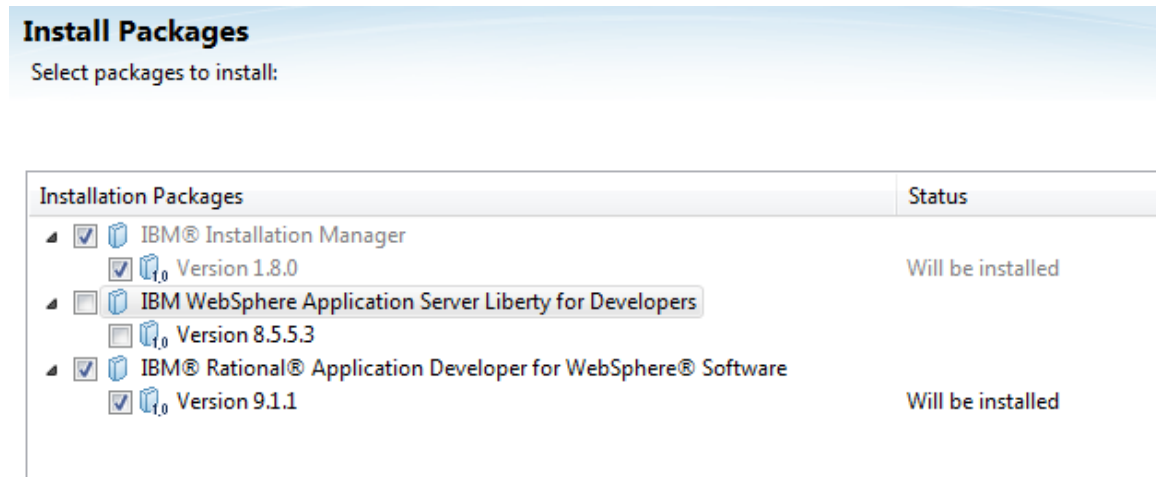


__4. Click the link to '**Launch the IBM Installation Manager**'.

A new program – the **IBM Installation Manager** will launch. You will then be prompted to *Install Packages*.

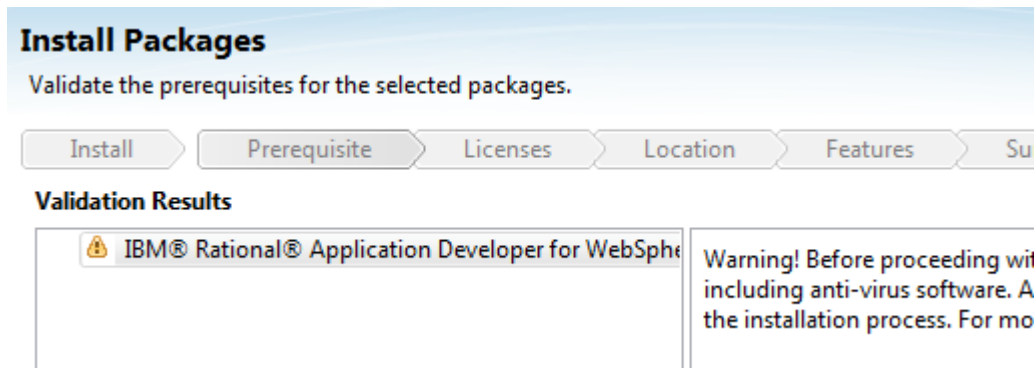
__5. From the *Install Packages* screen **Uncheck all** of the software **except** the software for **IBM Rational Application Developer for WebSphere Software** and the **IBM Installation Manager**.

__6. Make sure only **IBM Rational Application Developer for WebSphere Software Version 9.1.1** and **IBM Installation Manager** is selected as shown below and click **Next**.



The *Validation Results* page will appear.

__7. Check that you don't have any validation errors except the warning about stopping running programs including anti-virus software and click the **Next** button.



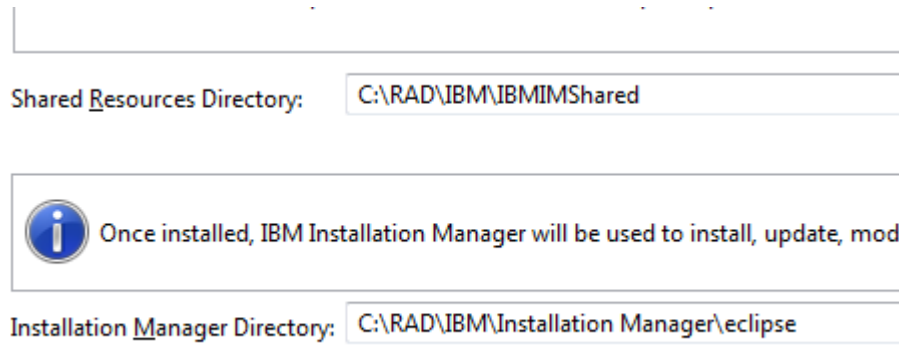
The *License Agreement* screen will appear.

__8. At the bottom of the screen, select **I accept the terms in the license agreements** and click **Next**.

__9. Change the **Shared Resources Directory** to **C:\RAD\IBM\IBMIMShared**

__10. Change the **Installation Manager Directory** to **C:\RAD\IBM\Installation Manager\eclipse**

__11. Verify the installation locations as shown below and click the **Next** button.



Shared Resources Directory: C:\RAD\IBM\IBMIMShared

Once installed, IBM Installation Manager will be used to install, update, mod

Installation Manager Directory: C:\RAD\IBM\Installation Manager\eclipse

__12. Change the **IBM Software Delivery Platform** to **C:\RAD\IBM\SDP**

__13. Verify the installation locations as shown below and click the **Next** button. You may not see the architecture selection options.

- Use the existing package group
- Create a new package group

Package Group Name	Installation Directory
IBM Software Delivery Platform	C:\RAD\IBM\SDP

Package Group Name: IBM Software Delivery Platform

Installation Directory: C:\RAD\IBM\SDP

Architecture Selection: 32-bit 64-bit

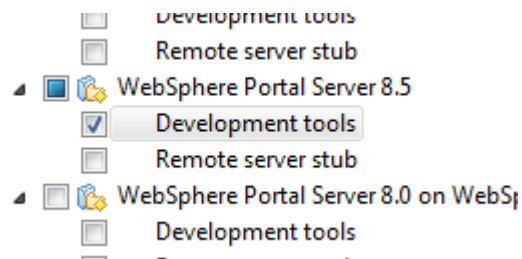
__14. Leave the option to extend an existing Eclipse installation unselected and click the **Next** button.

__15. Leave the default language selection and click the **Next** button.

__16. In the feature selection page expand **IBM Rational Application Developer for WebSphere Software 9.1.1** → **Server Tools** → **WebSphere Portal Server 8.5**

__17. Check the option for **Development tools**. Make sure to check the correct WebSphere Portal version of 8.5.

__18. Once your features are set as shown below click the **Next** button.



__19. For the option for the *Help System* select **Access help from the Web** and click the **Next** button.

After the installation, you can change how you access help by using

- Access help from the Web
- Download help and access the content locally. Only limited
When you first start the product, the complete online help is
an Internet connection. On subsequent startups, available up
- Access help from a server on your intranet

Host:

You will be asked to review summary information.

__20. After checking that **IBM Rational Application Developer for WebSphere Software 9.1.1** → **Server Tools** → **WebSphere Portal Server 8.5** → **Development tools** are selected to be installed click **Install**. Also double check that the various installation locations are sub-directories of the 'C:\RAD\IBM' directory.

Target Location

Package Group Name: IBM Software Delivery Platform
Installation Directory: C:\RAD\IBM\SDP
Shared Resources Directory: C:\RAD\IBM\IBMIMShared

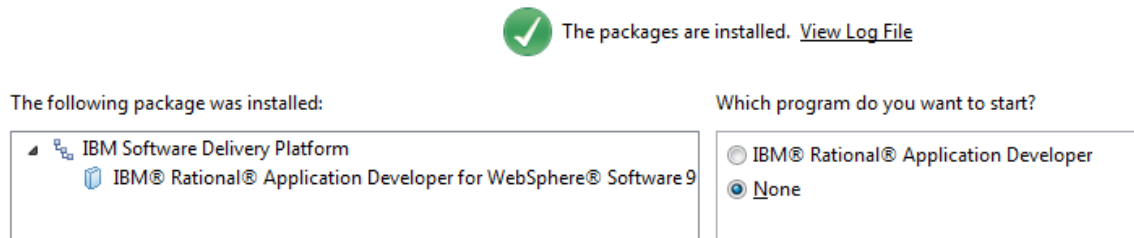
Packages



RAD 9.1.1 installation will start, this will take some time.

Eventually, it will complete.

__21. Select **None** and click the **Finish** button.



__22. Close all open windows.

Part 11 - Modify File Permissions

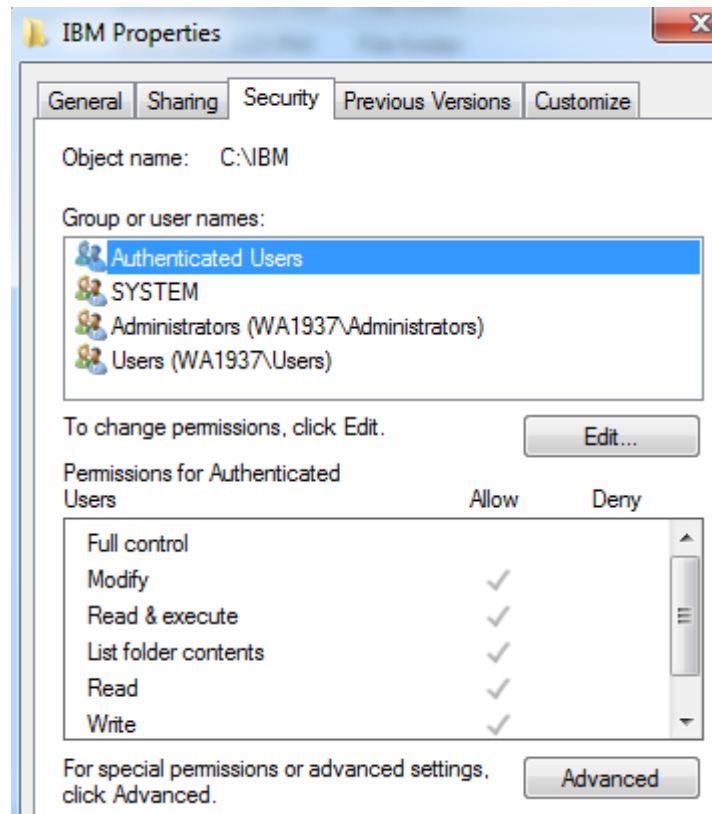
Note: These steps allow full access to the directories used by the Portal install. This is required so that students can start the Portal server from within RAD and will allow the Portal server to write to the log files. Without these steps the students won't be able to start the Portal server and won't be able to do the labs.

The steps to accomplish this may vary by Windows version but the goal is the same, granting access to all users to the Portal install. If you have questions about how to accomplish this contact the setup support person for the class.

__1. Right click C:\IBM and select **Properties**.

__2. Click the **Security** tab.

__3. Click **Advanced**.

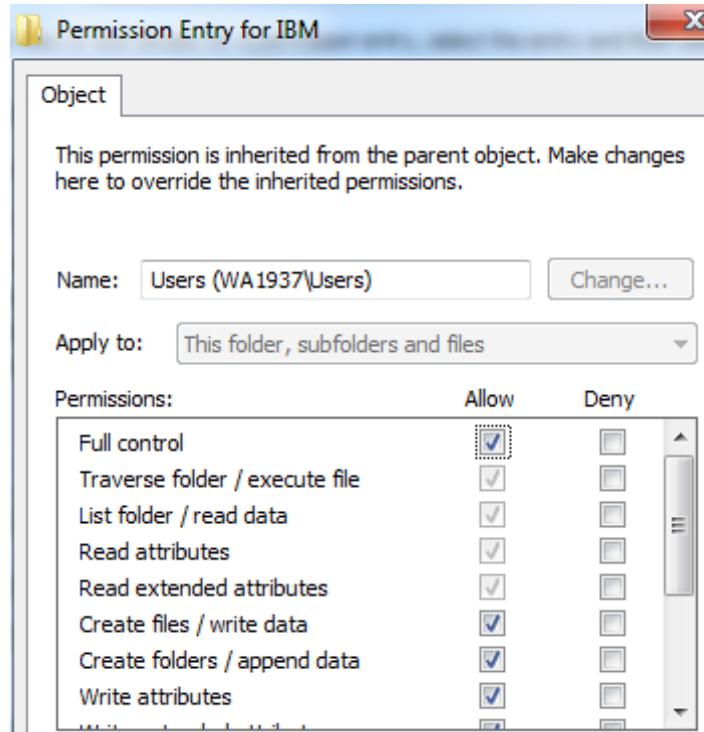


__4. Click **Change Permissions**.

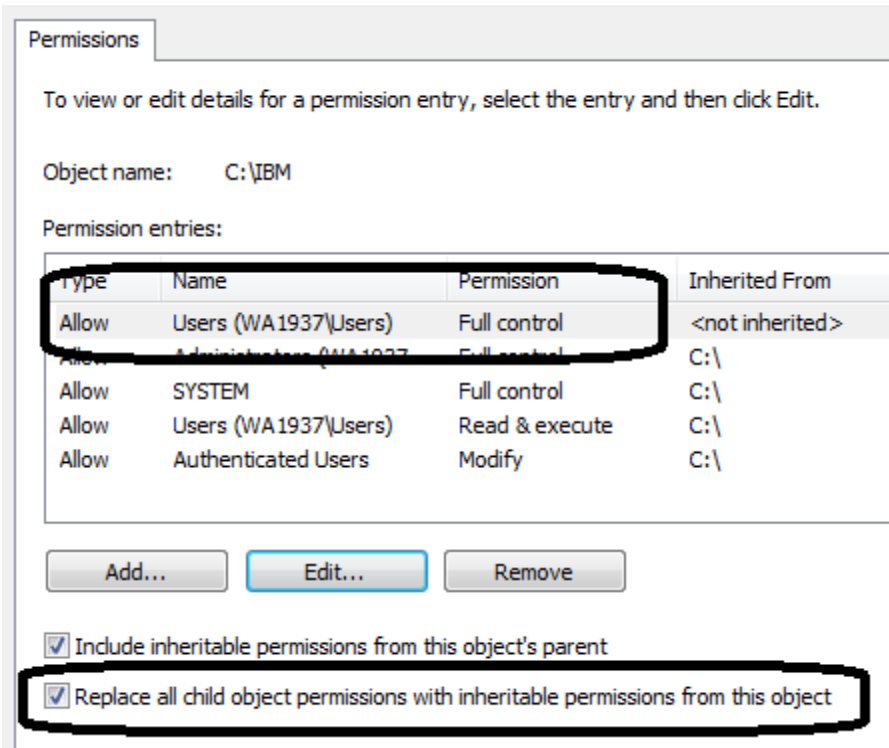
__5. Select the **Users** entry (add one if not present).

__6. Click **Edit...**

__7. Check **Full Control** permission option and click **OK**.

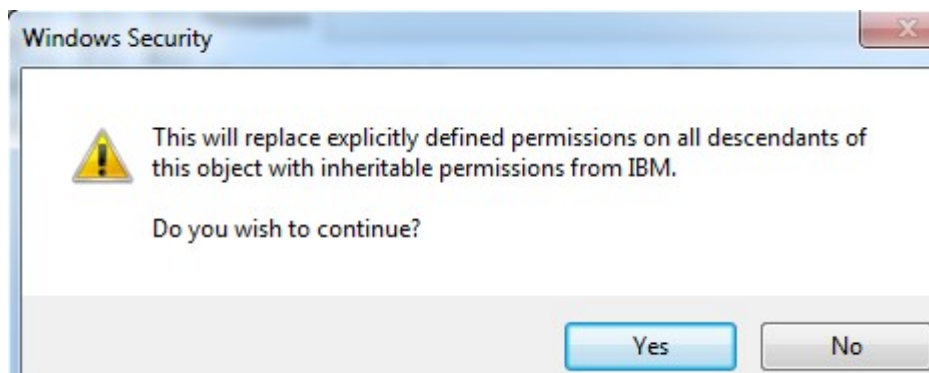


__8. Select the check box for "**Replace all child permissions with inheritable permissions from this objects**" and then click **OK**.

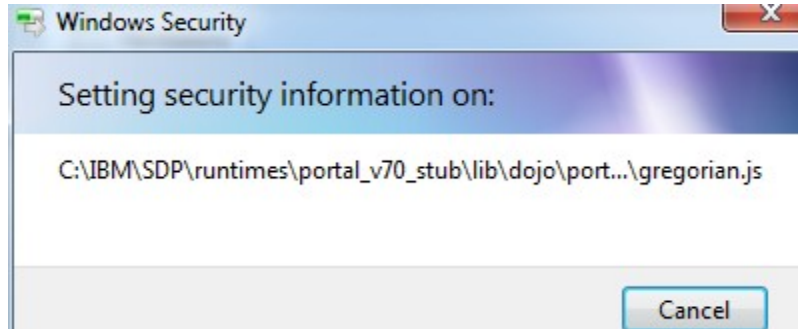


__9. Click OK to continue.

__10. A *Windows security* dialog will open, click **Yes**.



__11. Wait until finished updating security, and close all windows when it is done.



__12. Give full privileges to **C:\RAD** to all users.

__13. Give full privileges to **C:\LabFiles** to all users.

__14. Restart the computer and login with the user that the student will use to do the labs or a user that has the same permissions on the system as a student will have.

__15. Make sure the user has full access to **C:\LabFiles** as well as **C:\IBM** folders.

Part 12 - Verification of Rational Application Developer v9.1.1 Trial installation

__1. From the Start menu, select **All Programs > IBM Software Delivery Platform > IBM Rational Application Developer 9.1 > Rational Application Developer**.

__2. The workspace Launcher window will open, accept the default workspace location and click **OK**.

Rational Application Developer v9.1.1 Trial will start.

IBM® Rational® Application Developer for WebSphere® Software

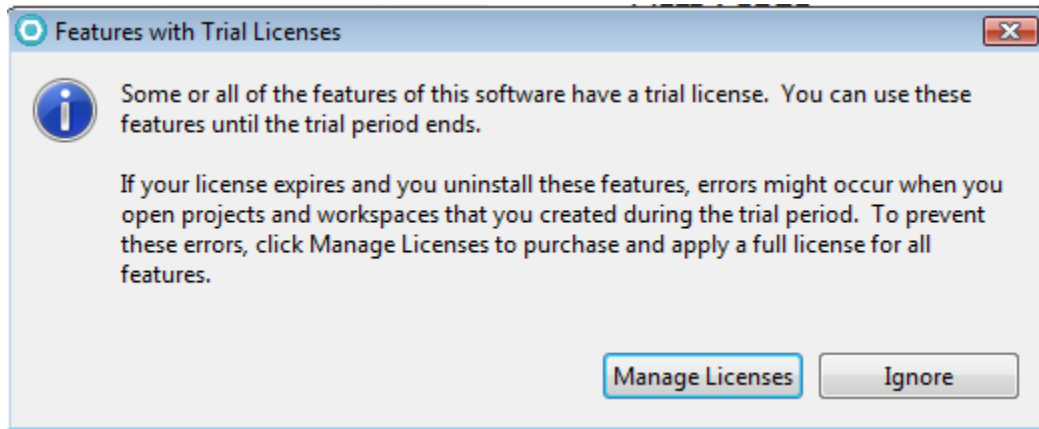
Version 9.1

Licensed Materials - Property of IBM Corp. 5724-J19 © Copyright 2000, 2014 IBM Corporation. IBM, the IBM logo, Rational and WebSphere are trademarks of IBM Corporation, registered in many jurisdictions worldwide. Java and all Java-based trademarks and logos are trademarks or registered trademarks of Oracle and/or its affiliates. Built on Eclipse is a trademark of Eclipse Foundation, Inc. Other company, product or service names may be trademarks or service marks of others. This Program is licensed under the terms of the license agreement accompanying the Program. This license agreement may be either located in a Program directory folder or library identified as "License" or "Non_IBM_License", if applicable, or provided as a printed license agreement. Please read this agreement carefully before using the Program. By using the Program, you agree to these terms.

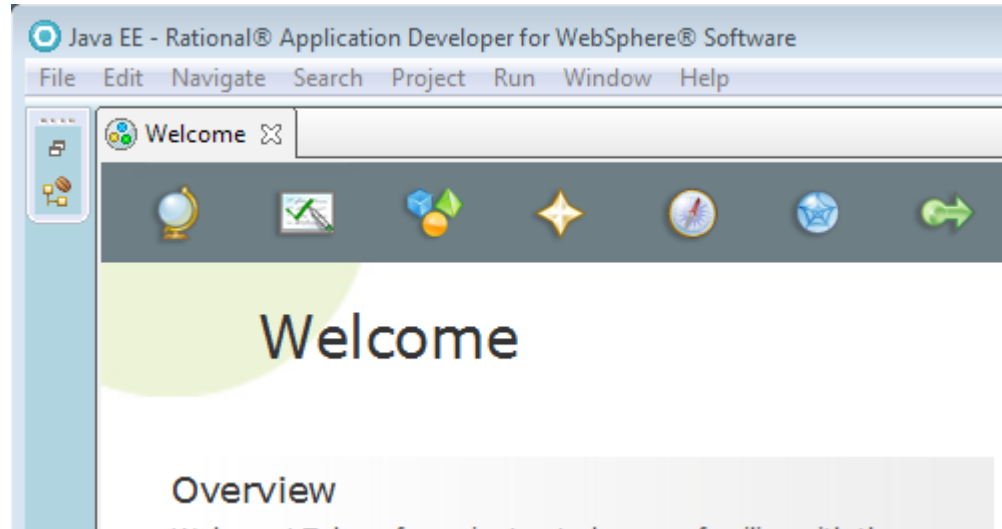
Loading Workbench



__3. The **Features with Trial Licenses** dialog will open. Click **Ignore**.



__4. Finally the *Welcome* page will open.



__5. From the menu, select **File->Exit** to close Rational Application Developer.

__6. Close all open windows.

Congratulations, **WebSphere Portal v8.5** and **Rational Application Developer v9.1.1** have been installed.