

WA2442 Introduction to JavaScript

Classroom Setup Guide

Web Age Solutions Inc.

Table of Contents

Part 1 - Minimum Hardware Requirements	3
Part 2 - Minimum Software Requirements	3
Part 3 - Software Provided.....	4
Part 4 - Important Ghosting or Imaging Information.....	4
Part 5 - Instructions.....	4
Part 6 - Installing Apache HTTP Server 2.2.14.....	6
Part 7 - Modify File Permissions (Windows Vista, Windows 7, Windows Server 2008, or Windows 8).....	10
Part 8 - Installing JDK 7 Update 45.....	17
Part 9 - Verification of JDK 7 Update 45.....	20
Part 10 - Summary.....	22

Part 1 - Minimum Hardware Requirements

- 3GB RAM minimum, 4 GB + recommended
- 10 GB in the hard disk
- Internet connection

Part 2 - Minimum Software Requirements

- Windows OS: Windows Vista / 7.
- Latest Google Chrome browser
- Apache HTTP Server 2.2 *
- Notepad+ 6.5 *
- Java 7 *

* - indicates software provided as part of the courseware.

Part 3 - Software Provided

You will receive the following file:

- **WA2442_REL_1_2.zip**

Send an email to support@webagesolutions.com in order to obtain a copy of the software for this course if you haven't receive it yet.

All other software listed under Minimum Software Requirements is either commercially licensed software that you must provide or software that is freely available off the Internet.

Part 4 - Important Ghosting or Imaging Information

Some of the software installed for this course will not function after changing the computer hostname. As such, cloning or imaging should not be used on a fully installed system.

You can save time by extracting the contents of the USB memory stick to C:\ on a clean OS install (no other software installed) and then imaging that hard drive. After restoring the image to the other computers and changing the hostnames, you can then install the software on each computer individually by following the instructions that are detailed later in this document.

Part 5 - Instructions

__1. Make sure a user with local administrative privileges is available for use during the class.

__2. Extract the **ZIP** file to C:\

__3. Review that the following folders were created:

- **C:\LabFiles**
- **C:\Software**
- **C:\Software\Apache**
- **C:\Software\NotepadPlus**

__4. Review that the following files were created:

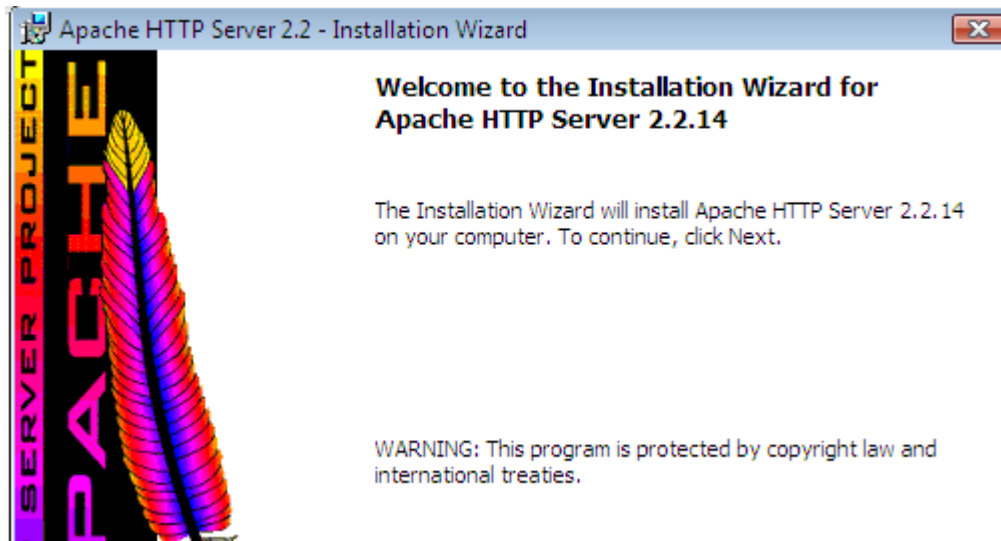
- **C:\Software\jdk-7u45-windows-i586.exe**

__5. Download and install the latest Google Chrome browser from:

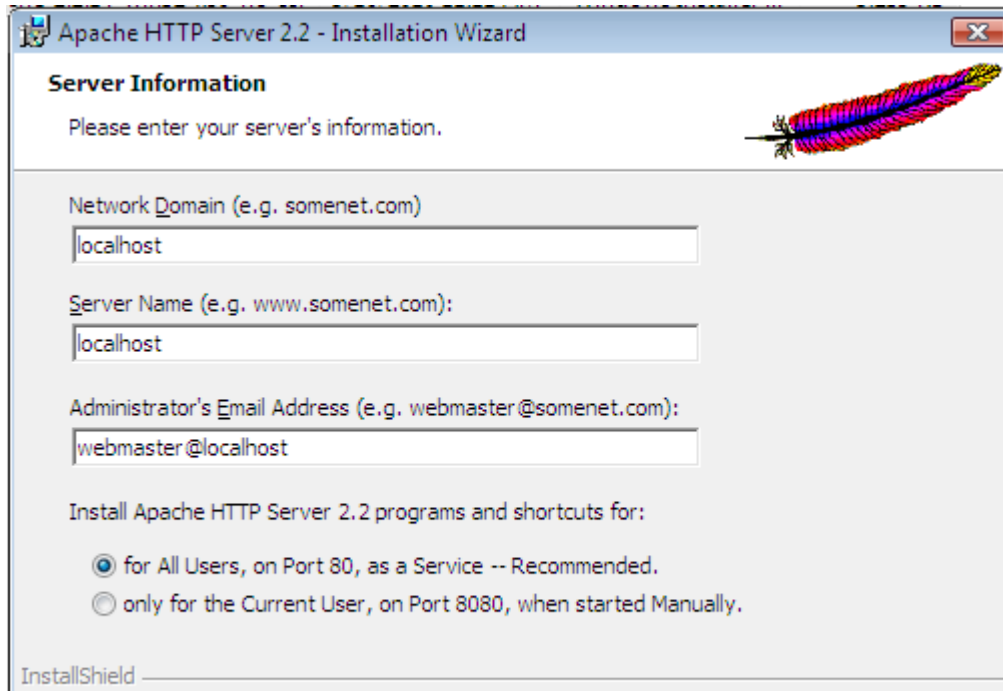
<https://www.google.com/intl/en/chrome/browser>

Part 6 - Installing Apache HTTP Server 2.2.14

- __1. Login as the administrative ID created for the class.
- __2. Run **apache_2.2.14-win32-x86-no_ssl.msi** from the **C:\Software\Apache** folder.
- __3. In the Welcome screen, click **Next**.

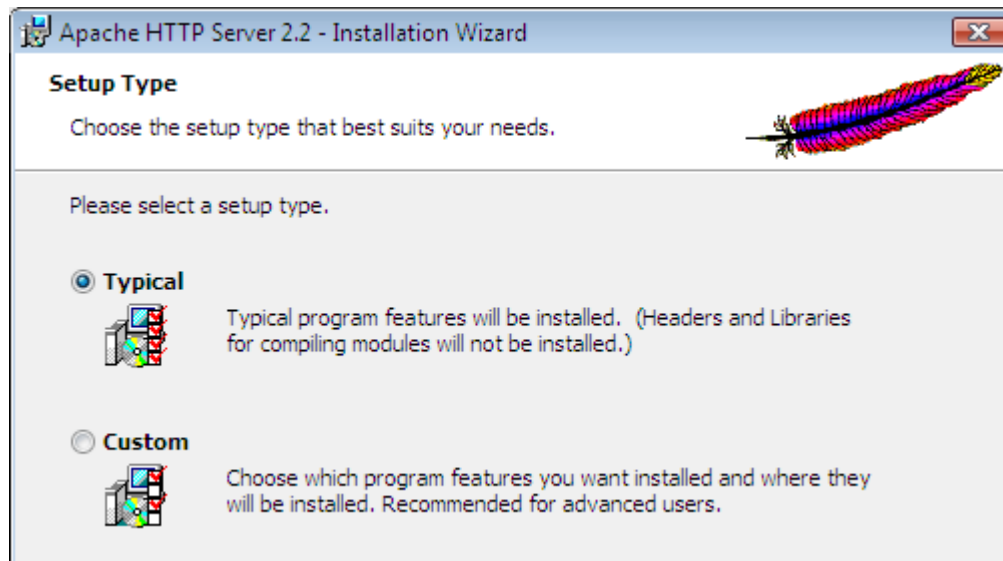


- __4. Accept the License Agreement and click **Next**.
- __5. In the *Read This First* page, click **Next**.
- __6. Enter **localhost** for **Network Domain** and **Server Name**. Enter **webmaster@localhost** for **Administrator's E-mail Address** as shown below.

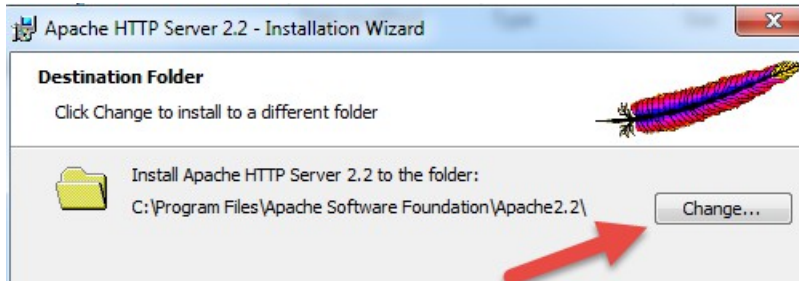


__7. Click the **Next** button.

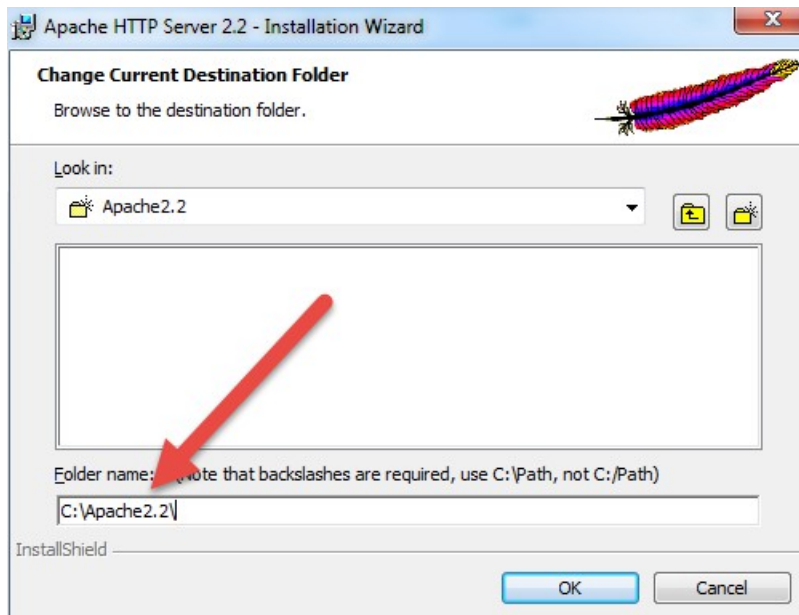
__8. Select **Typical** installation and click **Next**.



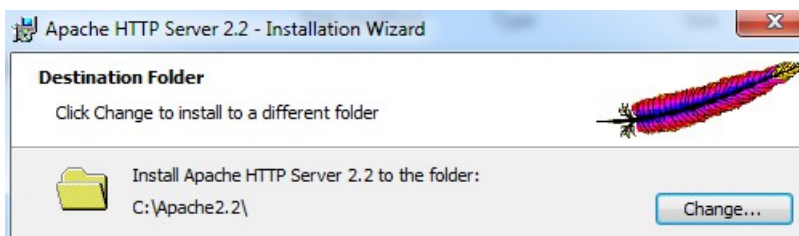
__9. Click the **Change** button to change the destination folder.



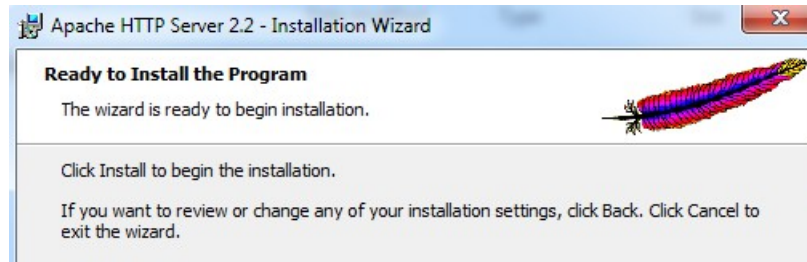
__10. Then change the **Folder name** to **C:\Apache2.2** and click **OK**.



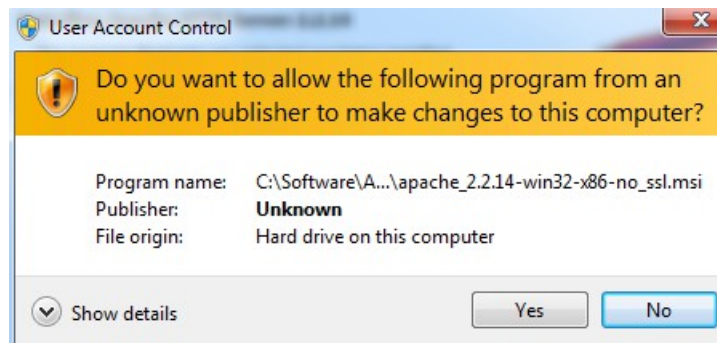
__11. Back in the *Destination Folder* page, confirm the new folder name (**C:\Apache2.2**) and click **Next**.



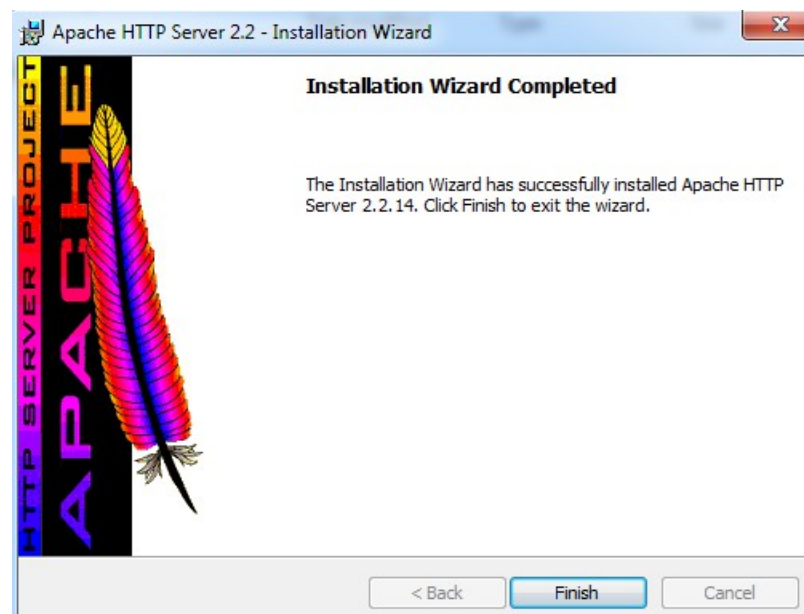
__12. Click **Install** to start the installation.



__13. If prompted by Windows security, click **Yes** to allow the installation to proceed.



__14. When the *Installation Wizard Completed* message appears, click **Finish**.



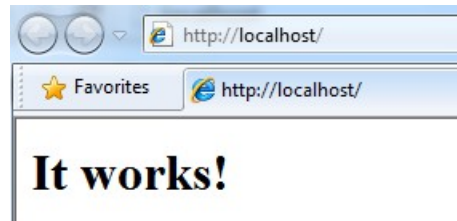
__15. Verify that the Apache Server is running on the task bar of Windows.



__ 16. Open a browser and type:

`http://localhost`

__ 17. Verify you see the message: **It works!**

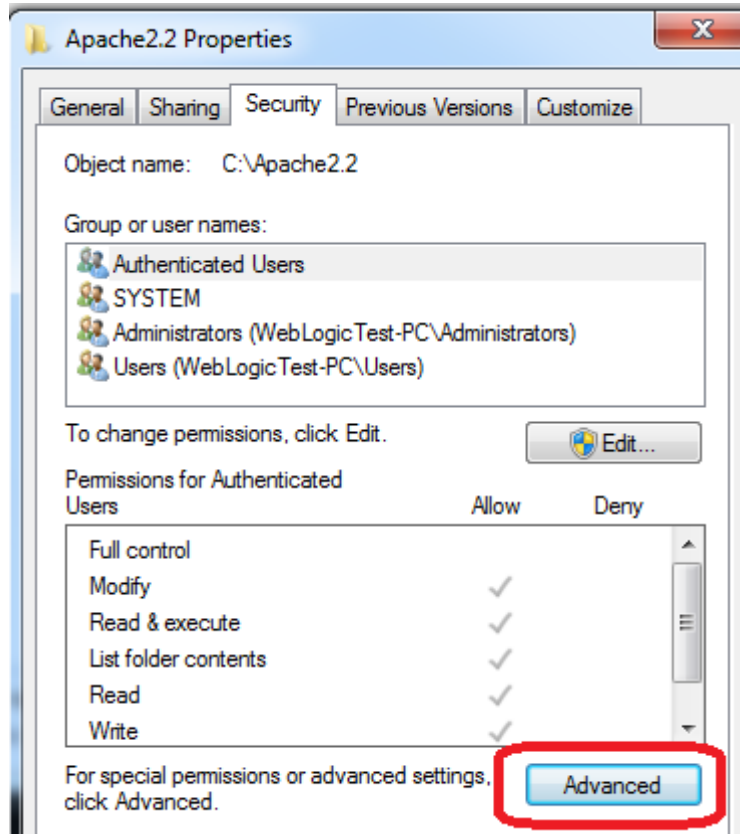


Apache HTTP Server 2.2.14 is installed.

Part 7 - Modify File Permissions (Windows Vista, Windows 7, Windows Server 2008, or Windows 8)

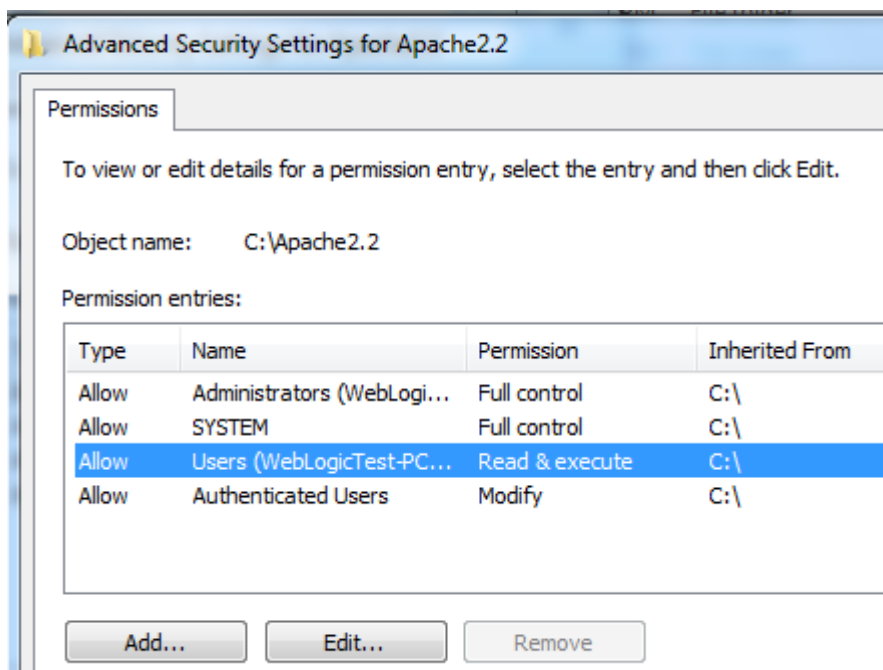
Note: If installing on Windows Vista, Windows 7, Windows Server 2008, or Windows 8 perform this section. Failure to follow these additional steps will lead to an unusable installation. These steps allow full access to the directories used by the Apache Web Server install. This is required so that students can write to the document root.

- __ 1. Open Windows Explorer.
- __ 2. Right click `C:\Apache2.2` and select **Properties**.
- __ 3. Click the **Security** tab.
- __ 4. Click **Advanced**.



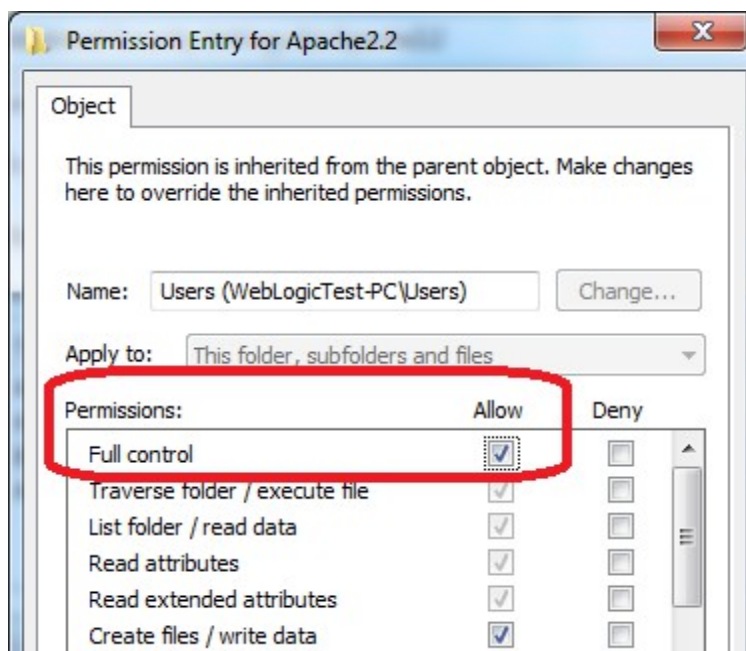
__5. Click **Change Permissions**.

__6. Select the **Users** entry (**add one if not present**).

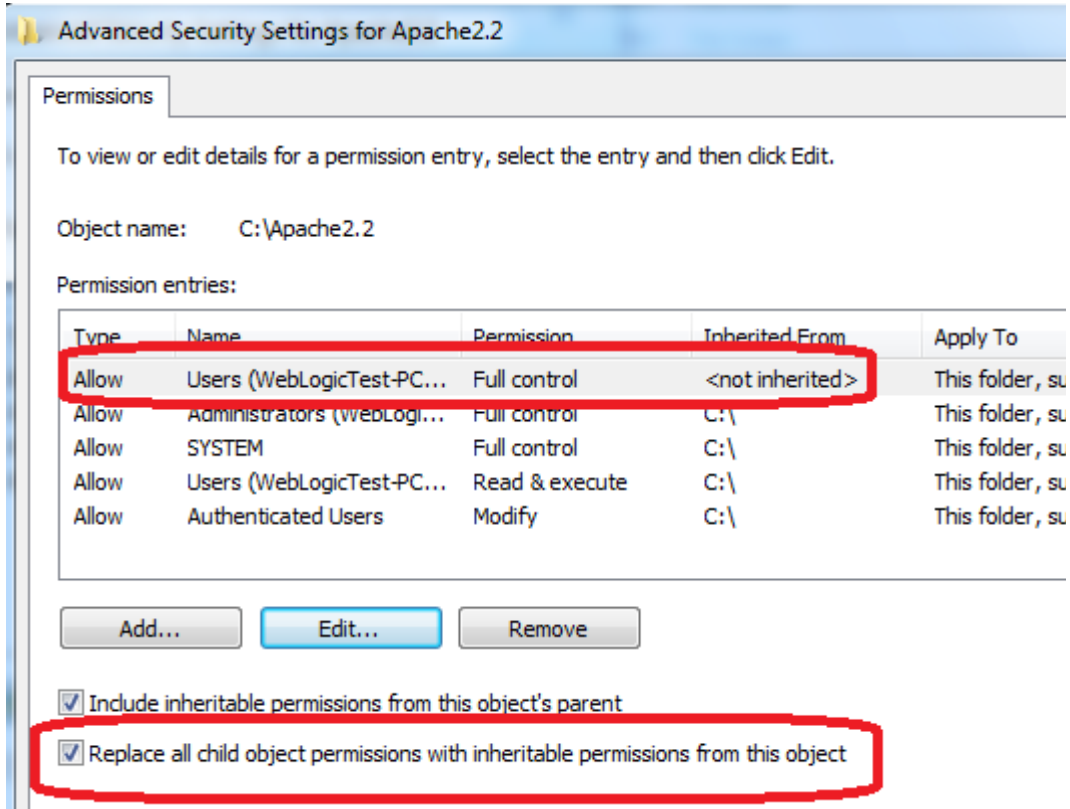


__7. Click **Edit...**

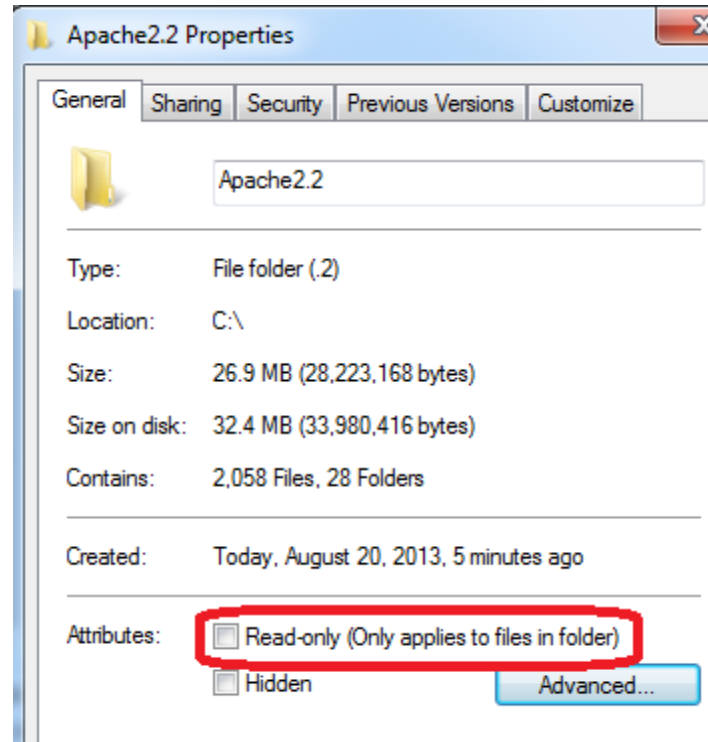
__8. Check the **Allow** checkbox to the right of **Full Control** and click **OK**.



__9. Select the checkbox for **Replace all child permissions with inheritable permissions from this objects** and then click **OK**.

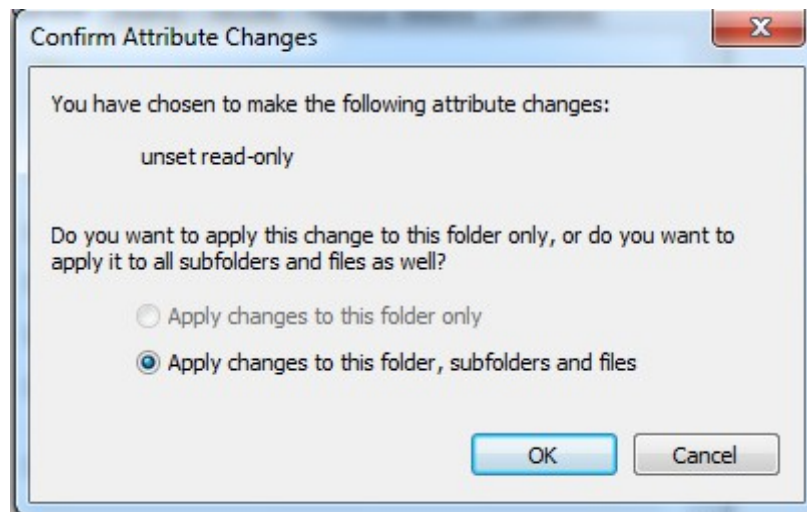


- __10. Click **OK** to continue.
- __11. A *Windows Security* dialog will open. Click **Yes**.
- __12. Wait until Windows finishes updating security.
- __13. Back in the *Advanced Security Settings* dialog, click **OK**.
- __14. Back in the *Apache2.2 Properties* dialog, click **OK**.
- __15. Right click C:**Apache2.2** and select **Properties**.
- __16. Uncheck the **Read-only** checkbox so files can be written to the directory.



__17. Click **OK**.

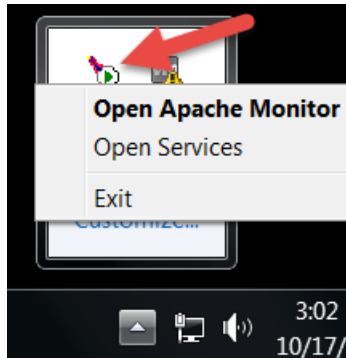
__18. In the *Confirm Attribute Changes* dialog, click **OK**, so the change will be applied to this folder, subfolder, and any files.



__19. Restart the computer and log in with the user that the student will use to do the labs.

__20. Make sure the user has full access to the **C:\Apache2.2\conf** and **C:\Apache2.2\htdocs** folders.

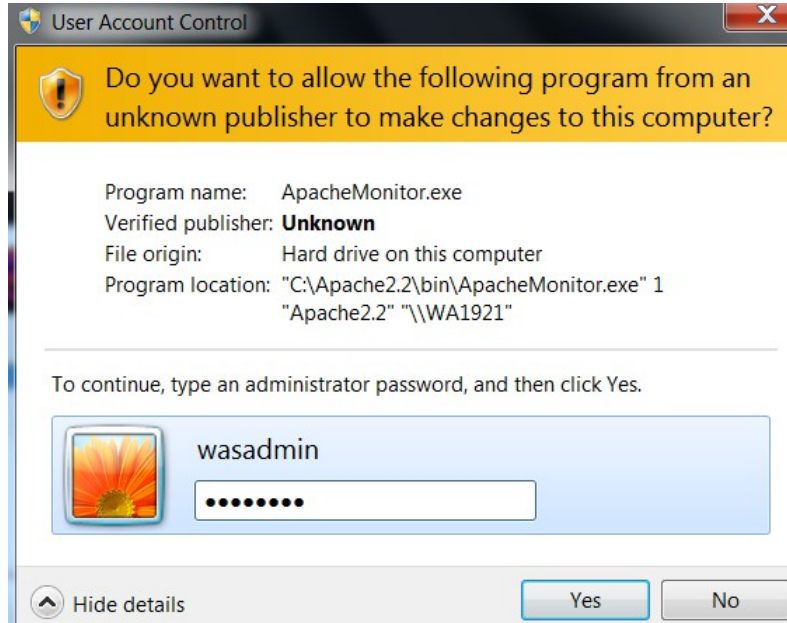
__21. Right click the task bar and select **Open Apache Monitor**.



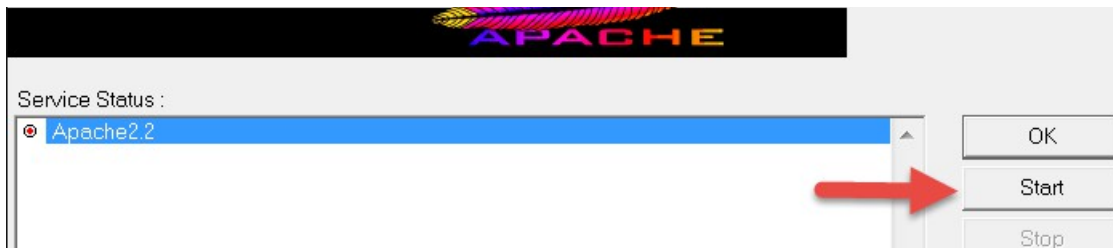
__22. The **Open Apache Monitor** window will open then click **Stop**.



__23. Enter the admin password if it is required and click **Yes**.



__24. The server will stop, click **Start**.



The server will be started again.



Note. If you were asking for password to stop the server means that you need to configure the user to allow the student starting the server without asking permissions or you need to provide the admin password to the student to be able to stop and restart the server because this is required during the labs.

Part 8 - Installing JDK 7 Update 45

1. Make sure there is no previous Java version already installed on the system. You can check this by using the Windows “Add/Remove Programs” utility. For the best compatibility with the labs it is suggested that all previous versions of Java be uninstalled before proceeding with these instructions. If this is an issue, please contact the setup support person for the course.

2. From the C:\Software directory run the following file:

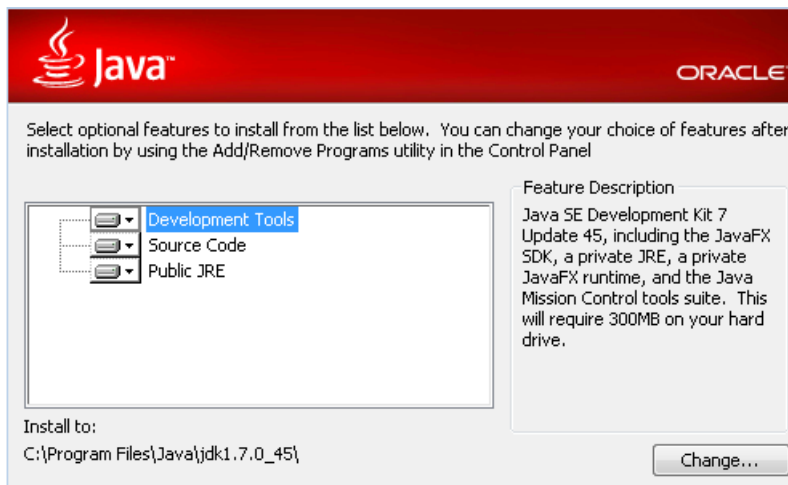
`jdk-7u45-windows-i586.exe`

Note: If using prompted by a security prompt allow the installation to continue.

3. When the initial step of the setup appears, press the **Next** button.



4. Leave the defaults for installation location and options, and press the **Next** button.



Note: The installation directory may be slightly different for example
`C:\Program Files (x86)\Java\jdk1.7.0_45`

The installation will begin installing files.



__5. The Destination Folder will appear, leave the default folder and click **Next**.



Note: The installation directory may be slightly different for example
C:\Program Files (x86)\Java\jdk1.7.0_45

Wait until the software is completely installed.

__6. Click **Close**.



__7. Close any browser that appears asking to register the JDK software.

Set the Environment variables.

__1. Open a Command Prompt. You can do this with 'Start → Programs → Accessories → Command Prompt'.

__2. Use the 'cd' command to attempt to switch to the following directory. This will verify the presence of a directory used later so make sure you do not get any errors about not being able to “find the path specified”.

```
cd C:\Progra~1\Java\jdk1.7.0_45
```

```
C:\Users\wasadmin>cd C:\Progra~1\Java\jdk1.7.0_45
C:\PROGRA~1\Java\jdk1.7.0_45>_
```

Note: The installation directory may be slightly different depending your operating system. You may need to use the following directory instead of the one listed above:

C:\Progra~2\Java\jdk1.7.0_45

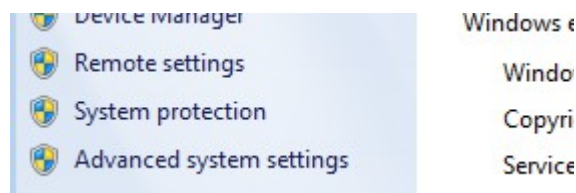
Some of the remaining steps will use the slightly different directory.

__3. Make sure you can reach the java folder and remember the value entered because you will use this value in the following steps.

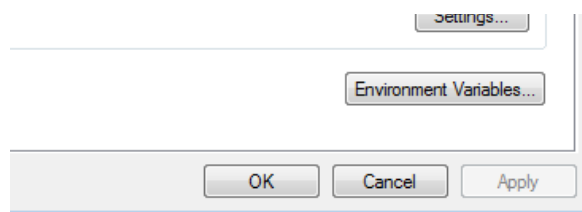
__4. Close the command prompt window.

__5. In the Windows Start Menu, right-click on the **Computer** link in the right-hand side of the Start panel, and then select **Properties**.

__6. Click on **Advanced system settings**.



__7. The system will display the **System Properties** dialog. Select the **Advanced** tab and click **Environment Variables**.

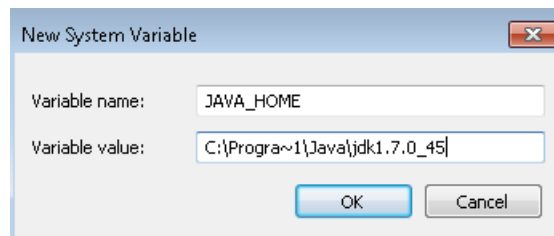


__8. Under the **System Variables** list, click the **New** button.

__9. Enter **JAVA_HOME** as Variable name.

__10. As Variable value enter the following. This should be the value you verified in the *Set the Environment variables section - step 2*.

C:\Progra~1\Java\jdk1.7.0_45

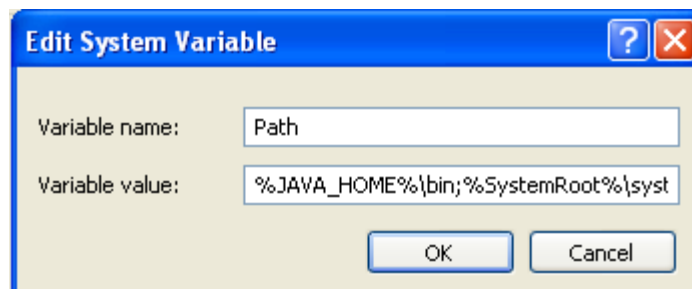


Note: If you are using a 64-bit OS you may have to use **C:\Progra~2\Java\jdk1.7.0_45**

__11. Click **OK** to create the variable.

__12. From the *System Variables* list, select **Path** and click **Edit**.

__13. At the beginning of the line enter the following. Make sure to include the semi-colon on the end:
%JAVA_HOME%\bin;



__14. Click **OK**.

__15. Click **OK** to close the *Environment Variables* window.

__16. Click **OK** to close the *System Properties* window.

Part 9 - Verification of JDK 7 Update 45

__1. Open a Windows command prompt. You can do this by selecting '**Start -> Run**', entering '**cmd**', and then pressing the **OK** button. Make sure it is a new command prompt and not one open previously.

__2. Enter the following command:

```
echo %PATH%
```

Make sure you see the Java 'bin' directory listed at the beginning as shown below.

```
C:\Users\wasadmin>echo %PATH%
C:\Progra~1\Java\jdk1.7.0_45\bin;C:\Windows\system32;C:\W
m32\Wbem;C:\Windows\System32\WindowsPowerShell\v1.0\
C:\Users\wasadmin>_
```

Note: You may see C:\Progra~2\Java\jdk1.7.0_45

__3. Enter the following command:

```
java -version
```

Make sure you see the response shown below.

```
C:\Users\wasadmin>java -version
java version "1.7.0_45"
Java(TM) SE Runtime Environment (build 1.7.0_45-b18)
Java HotSpot(TM) Client VM (build 24.45-b08, mixed mode, sharing)
```

Troubleshooting: If you get an error message means that your Environment variable was incorrectly entered, go back and fix the values.

__4. Enter the following command:

```
javac
```

Verify that you get the options to run the Java compiler:

```
C:\Users\wasadmin>javac
Usage: javac <options> <source files>
where possible options include:
-g Generate all debugging info
-g:none Generate no debugging info
-g:{lines,vars,source} Generate only some debugging info
-nowarn Generate no warnings
-verbose Output messages about what the compiler is doing
```

__5. Enter the following command:

```
java -XshowSettings:all 2>&1 | findstr /c:"sun.arch.data.model"
```

```
C:\Users\wasadmin>java -XshowSettings:all 2>&1 | findstr /c:"sun.arch.data.model"
sun.arch.data.model = 32
```

Verify that it displays the correct value of 32. This indicates that it is 32-bit java that is installed.

Troubleshooting: If it displays 64 for the value, then you have 64 bit java installed and this will cause issues. Please uninstall the 64-bit java and reinstall the indicated 32-bit jdk.

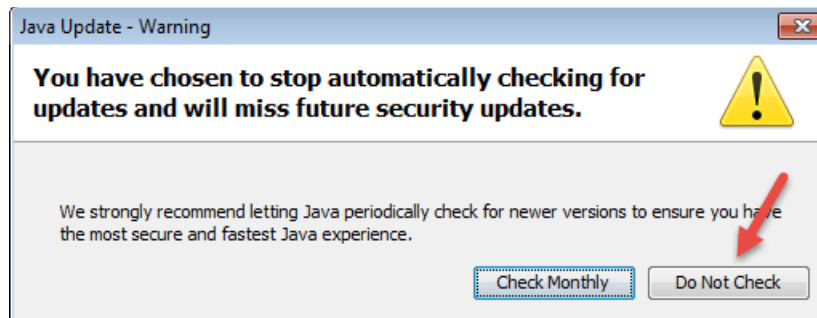
__6. Close the command prompt window and any extra windows that are open.

__7. From Start, expand **All Programs > Java** then right click **Check for Updates** and select **Run as Administrator**.

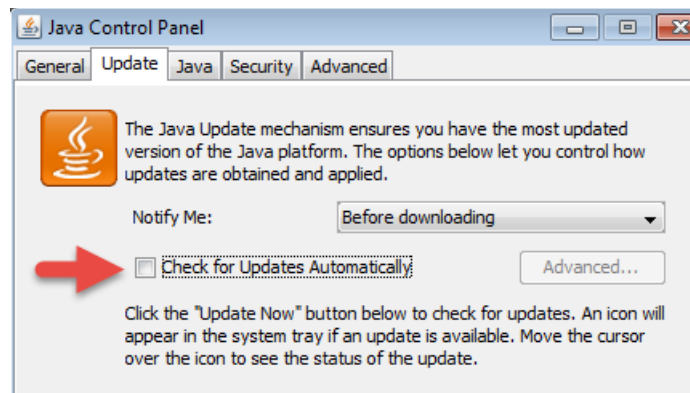
__8. Select the **Update** tab.

__9. Un-check the **Check for updates automatically** check box.

__10. A popup will open, click **Do not check**.



__11. Make sure the box is not checked and click **OK**.



__12. Click **OK** to close the Java Control Panel.

Java has been installed.

Part 10 - Summary

You have successfully installed the software for this course!

If you have any question please contact us by email at support@webagesolutions.com

From US and Canada call: 1-877-812-8887 ext. 26

WA2442 Introduction to JavaScript - Classroom Setup Guide

International call: 416-406-3994 ext. 26

Congratulations. The installation for this course has been completed.