

# **WA2410 Introduction to Version Control with Git**

## **Classroom Setup Guide**

**Web Age Solutions Inc.**

## Table of Contents

Part 1 - Minimum Hardware Requirements .....	3
Part 2 - Minimum Software Requirements .....	3
Part 3 - Software Provided.....	4
Part 4 - Instructions.....	4
Part 5 - Privileges to Users.....	5
Part 6 - Summary.....	8

## Part 1 - Minimum Hardware Requirements

- 2 GB RAM minimum, 3 GB recommended
- 15 GB in the hard disk
- Access to internet

## Part 2 - Minimum Software Requirements

- One of the following Windows versions:
  - Windows Vista (Professional, Enterprise, or Ultimate)
  - Windows 7 (Professional, Enterprise, or Ultimate)
- The following web browsers:
  - Internet Explorer 8 or above
  - Chrome
- Adobe Acrobat Reader
- Zip extraction utility
- Git-2.8.1 \*

\* - indicates software provided as part of the courseware.

### Part 3 - Software Provided

Name of the file you will receive:

- **WA2410\_REL\_3\_0.zip**

All other software listed under Minimum Software Requirements is either commercially licensed software that you must provide or software that is freely available off the Internet.

### Part 4 - Instructions

\_\_1. Login with an administrator account. **NOTE. THIS COURSE REQUIRES ADMIN PRIVILEGES TO THE STUDENT ACCOUNT.**

\_\_2. Extract the **ZIP** file directly to C:\

\_\_3. Review that the following folders were created:

- **C:\LabFiles**
- **C:\Software**

\_\_4. Review that the following files were created:

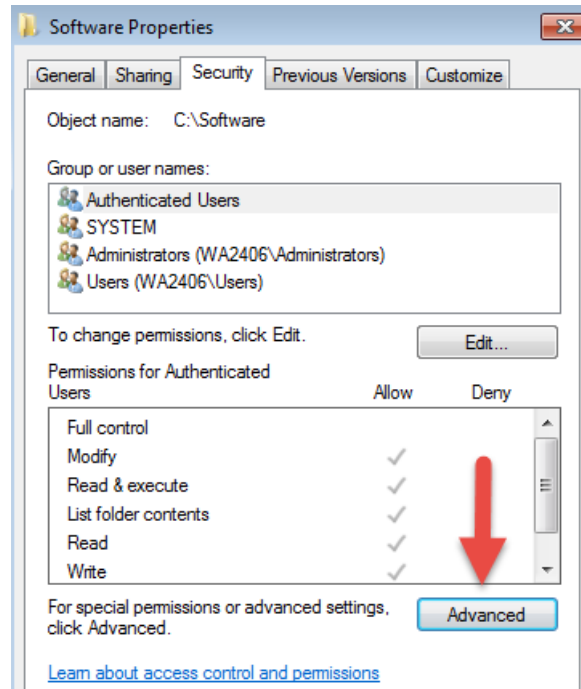
- **C:\Software\Git-2.8.1-32-bit.exe**

## Part 5 - Privileges to Users

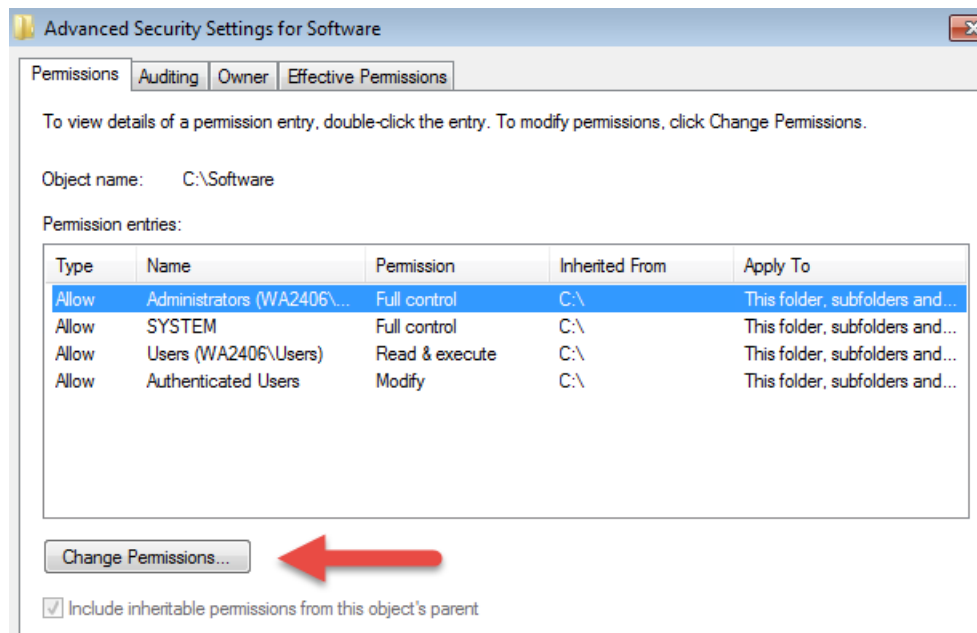
During the labs students will require privileges on several directories. They will need to be able to write, read, and modify files in these directories for the labs. Although the directions below are provided as an example, this may differ depending on Windows version. The important thing is to make sure students have full permissions on the folders below or they may not be able to accomplish some labs.

- **C:\Software**
- **C:\LabFiles**
- **C:\Workspace**

- \_\_1. Create the user that the students will use during the class.
- \_\_2. Give the student user account administrative rights. During the labs the student requires this to install software.
- \_\_3. Open Windows Explorer.
- \_\_4. Right click C:\**Software** and select **Properties**.
- \_\_5. Click the **Security** tab.
- \_\_6. Click **Advanced**.

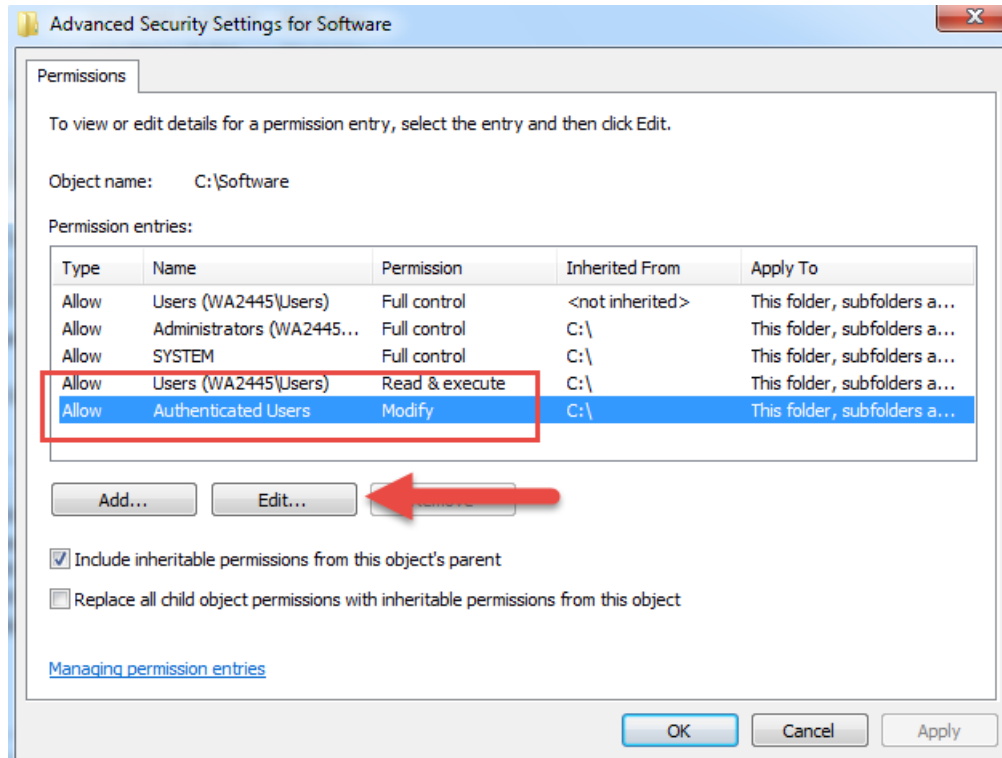


7. Click **Change Permissions**.

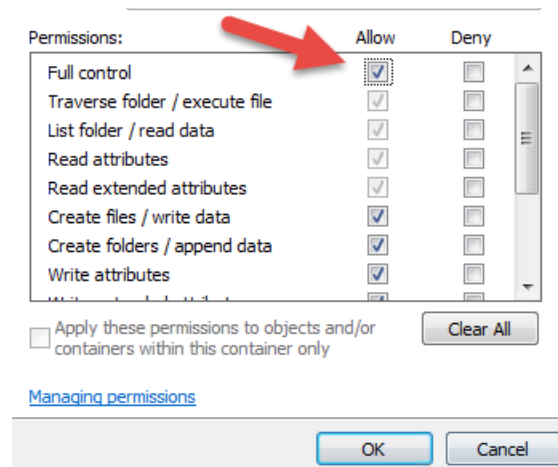


8. Select the **Authenticated Users** entry and click **Edit...**

Note. If you don't have a domain in your environment the select **Users** instead Authenticated Users.



\_\_9. Check the **Allow** checkbox to the right of **Full Control** and click **OK**.



\_\_10. Select the checkbox for **Replace all child permissions with inheritable permissions from this objects** and then click **OK**.



- Include inheritable permissions from this object's parent
- Replace all child object permissions with inheritable permissions from this object

- \_\_ 11. A *Windows Security* dialog will open. Click **Yes**.
- \_\_ 12. Wait until Windows finishes updating security.
- \_\_ 13. Back in the *Advanced Security Settings* dialog, click **OK**.
- \_\_ 14. Back in the *Properties* dialog, click **OK**.
- \_\_ 15. Do the same steps to the **C:\LabFiles** folder.
- \_\_ 16. Create a folder called **C:\Workspace** if its not already created.
- \_\_ 17. Do the same steps to the **C:\Workspace** folder.

## **Part 6 - Summary**

### **You have successfully installed the software for this course!**

If you have any question please contact us by email at [support@webagesolutions.com](mailto:support@webagesolutions.com)

From US and Canada call: 1-877-812-8887 ext. 26

International call: 416-406-3994 ext. 26