

# **WA2402 Introduction to Responsive Web Development with HTML5, CSS3, JavaScript and jQuery**

## **Classroom Setup Guide**

**Web Age Solutions Inc.**

## Table of Contents

Part 1 - Minimum Hardware Requirements .....	3
Part 2 - Minimum Software Requirements.....	3
Part 3 - Software Provided.....	4
Part 4 - Instructions.....	4
Part 5 - Installing Apache HTTP Server 2.2.14.....	5
Part 6 - Modify File Permissions (Windows Vista, Windows 7, Windows Server 2008, or Windows 8).....	9
Part 7 - Summary.....	16

## Part 1 - Minimum Hardware Requirements

- 2 GHz Pentium IV
- 2 GB RAM minimum
- 8 GB in the hard disk
- USB port

## Part 2 - Minimum Software Requirements

- Windows 7 (Professional, Enterprise, or Ultimate)
- The following 3 browsers are required (latest version):
  - Firefox
  - Chrome
  - Internet Explorer
- Adobe Acrobat Reader
- Zip extraction utility
- Apache HTTP Server 2.2.14 \*
- Notepad++ 6.5 \*

\* - indicates software provided as part of the courseware.

### Part 3 - Software Provided

List of ZIP files required for this course and used in next steps on this document:

- **WA2402\_REL\_2\_5.ZIP**

Send an email to support@webagesolutions.com in order to obtain a copy of the software for this course if you haven't receive it yet.

All other software listed under Minimum Software Requirements is either commercially licensed software that you must provide or software that is freely available off the Internet.

### Part 4 - Instructions

\_\_1. Make sure a user with local administrative privileges is available for use during the class.

\_\_2. Extract the **WA2402.ZIP** file to C:\

\_\_3. Review that the following folders were created:

- **C:\LabFiles**
- **C:\Software\Apache**
- **C:\Software\NotepadPlus**

\_\_4. Review that the following files were created:

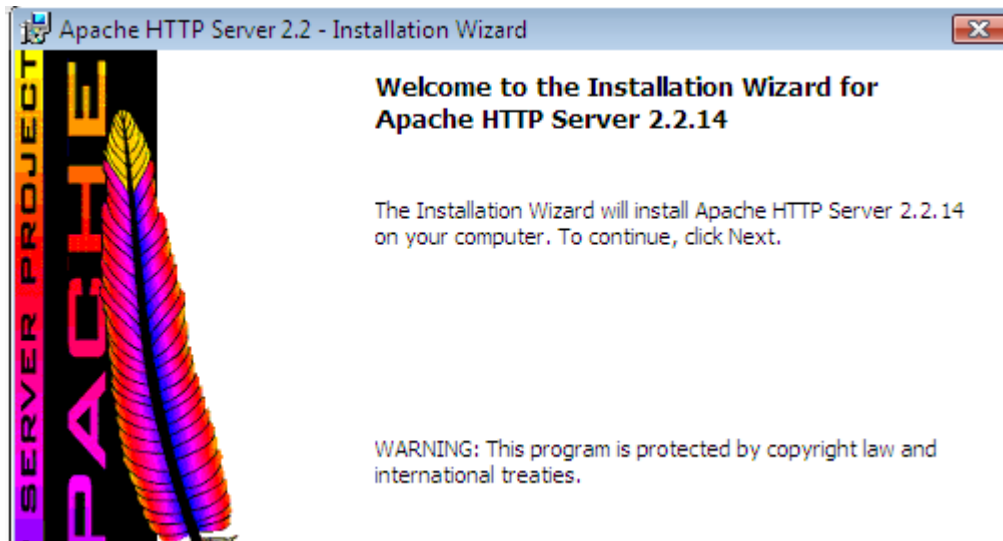
- **C:\Software\Apache\apache\_2.2.14-win32-x86-no\_ssl.msi**

\_\_5. Create a shortcut to the following program on the desktop:

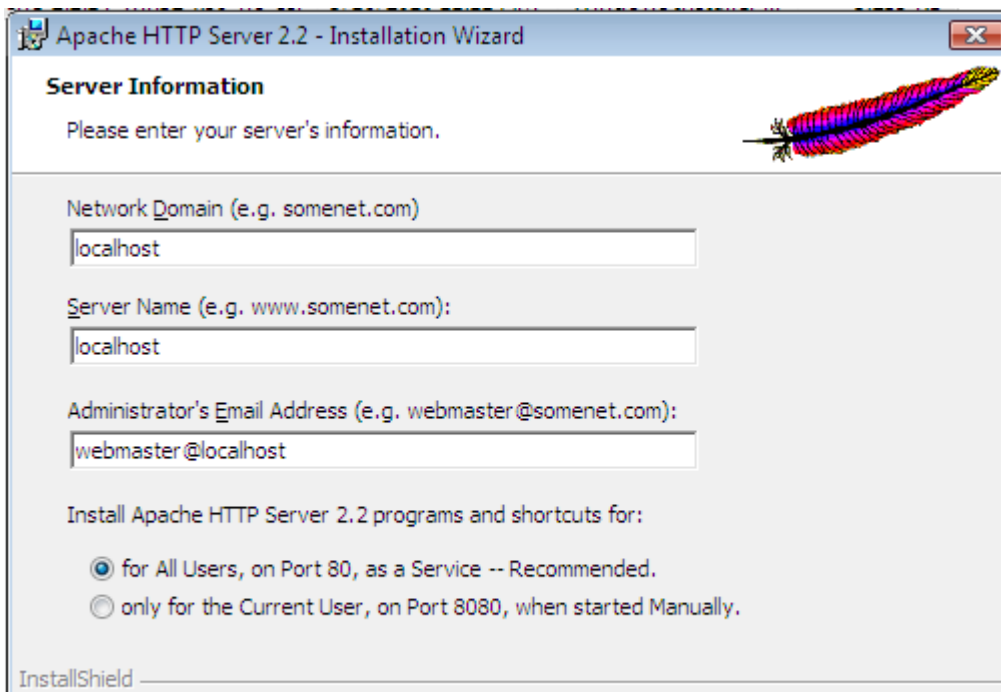
- **C:\Software\NotepadPlus\notepad++.exe**

## Part 5 - Installing Apache HTTP Server 2.2.14

- \_\_1. Login as the administrative ID created for the class.
- \_\_2. Run **apache\_2.2.14-win32-x86-no\_ssl.msi** from the **C:\Software\Apache** folder.
- \_\_3. In the Welcome screen, click **Next**.

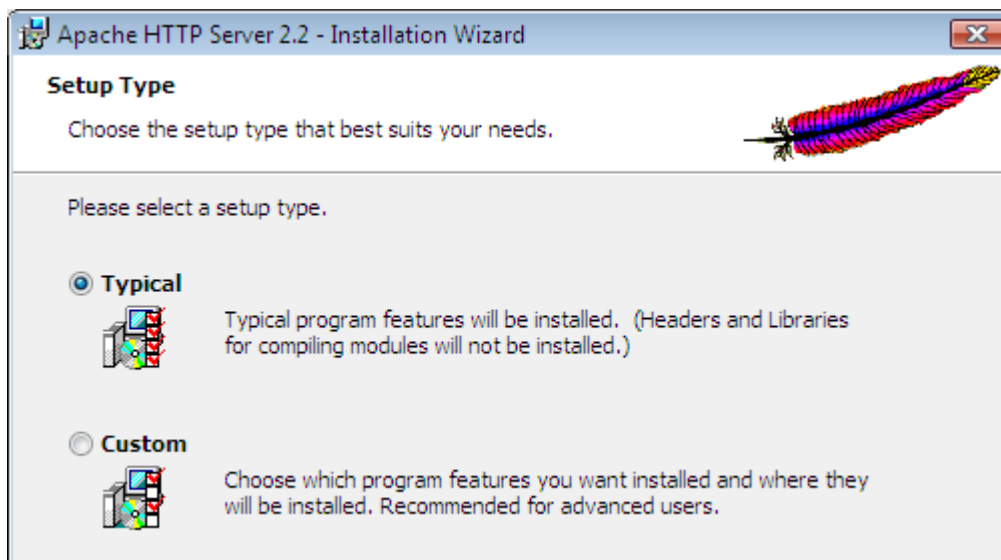


- \_\_4. Accept the License Agreement and click **Next**.
- \_\_5. In the *Read This First* page, click **Next**.
- \_\_6. Enter **localhost** for **Network Domain** and **Server Name**. Enter **webmaster@localhost** for **Administrator's E-mail Address** as shown below.

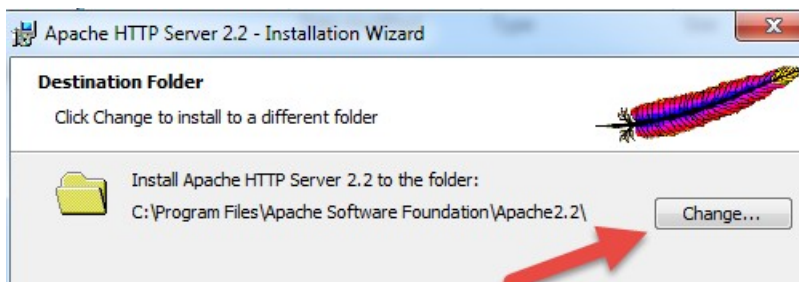


\_\_7. Click the **Next** button.

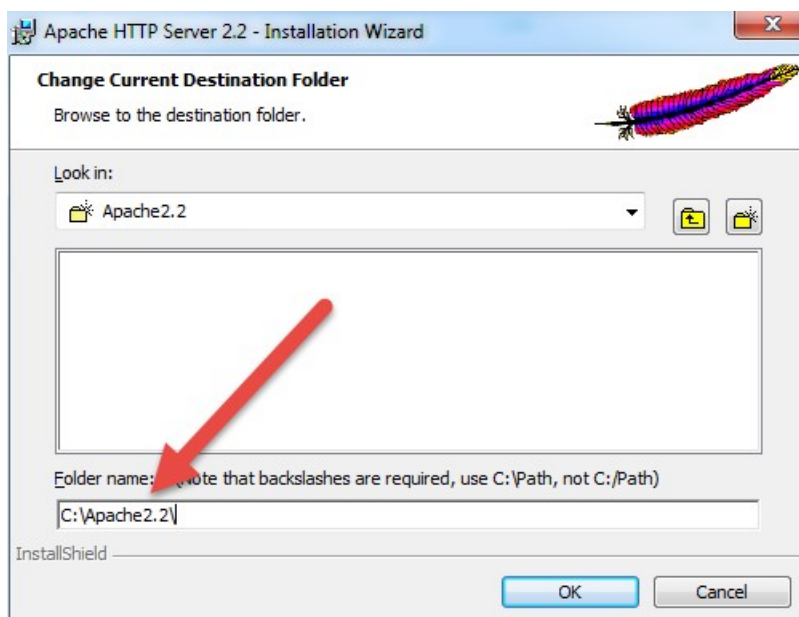
\_\_8. Select **Typical** installation and click **Next**.



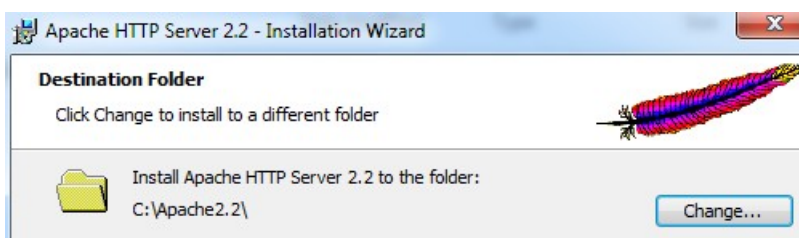
\_\_9. Click the **Change** button to change the destination folder.



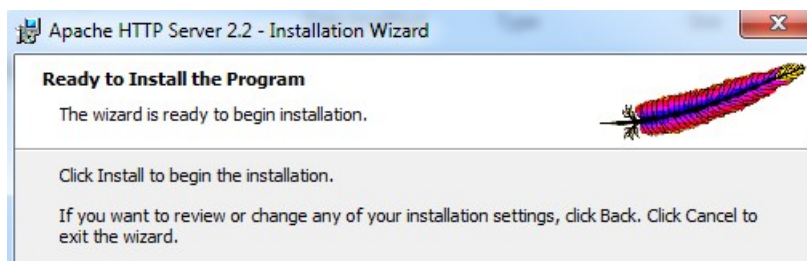
\_\_10. Then change the **Folder name** to **C:\Apache2.2\** and click **OK**.



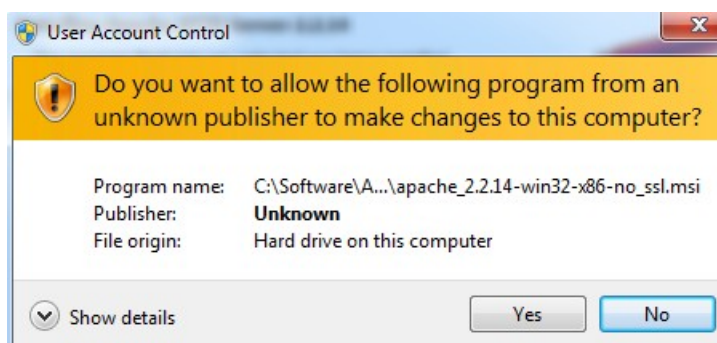
\_\_11. Back in the *Destination Folder* page, confirm the new folder name (**C:\Apache2.2\**) and click **Next**.



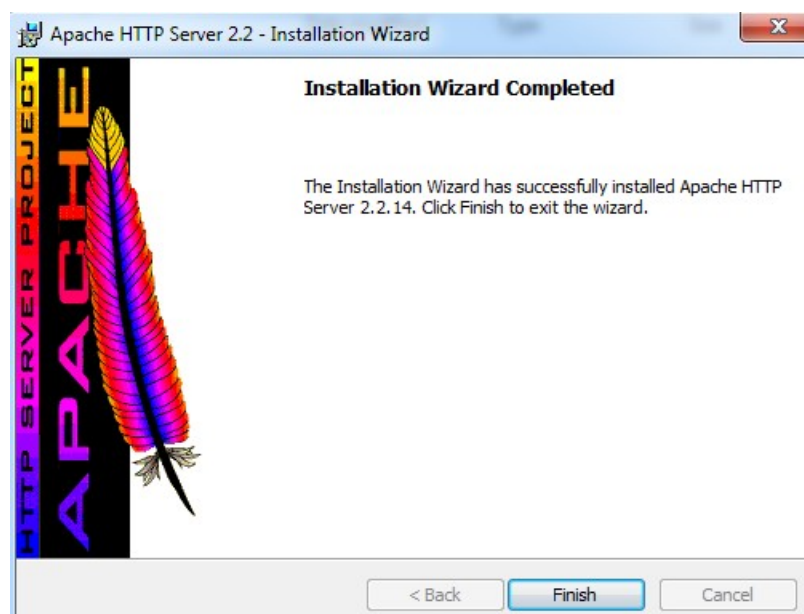
\_\_12. Click **Install** to start the installation.



\_\_13. If prompted by Windows security, click **Yes** to allow the installation to proceed.



\_\_14. When the *Installation Wizard Completed* message appears, click **Finish**.



\_\_15. Verify that the Apache Server is running on the task bar of Windows.

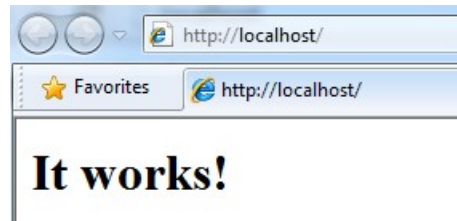




\_\_16. Open a browser and type:

`http://localhost`

\_\_17. Verify you see the message: **It works!**



Apache HTTP Server 2.2.14 is installed.

## **Part 6 - Modify File Permissions (Windows Vista, Windows 7, Windows Server 2008, or Windows 8)**

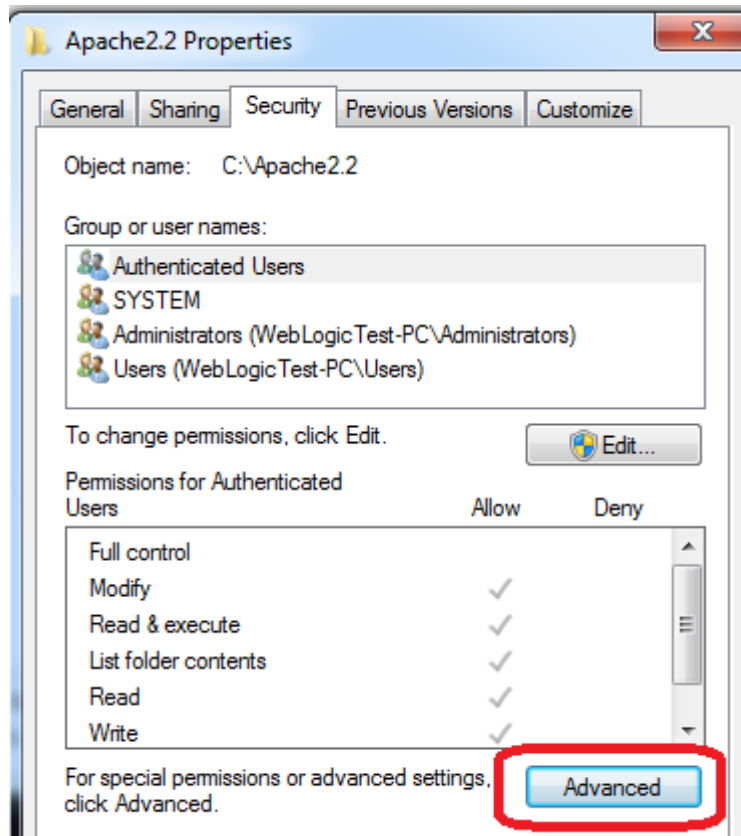
**Note:** If installing on Windows Vista, Windows 7, Windows Server 2008, or Windows 8 perform this section. Failure to follow these additional steps will lead to an unusable installation. These steps allow full access to the directories used by the Apache Web Server install. This is required so that students can write to the document root.

\_\_1. Open Windows Explorer.

\_\_2. Right click `C:\Apache2.2` and select **Properties**.

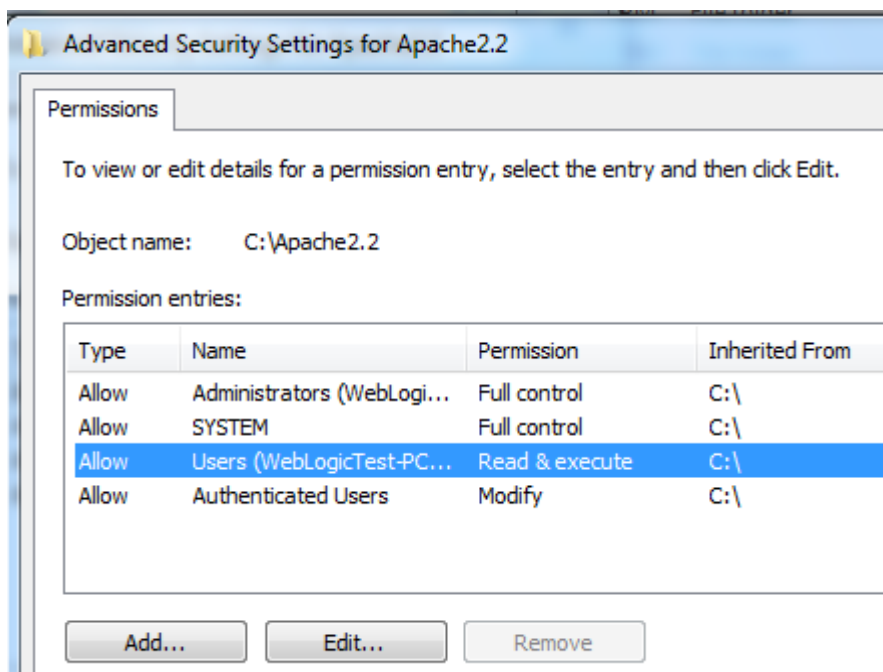
\_\_3. Click the **Security** tab.

\_\_4. Click **Advanced**.



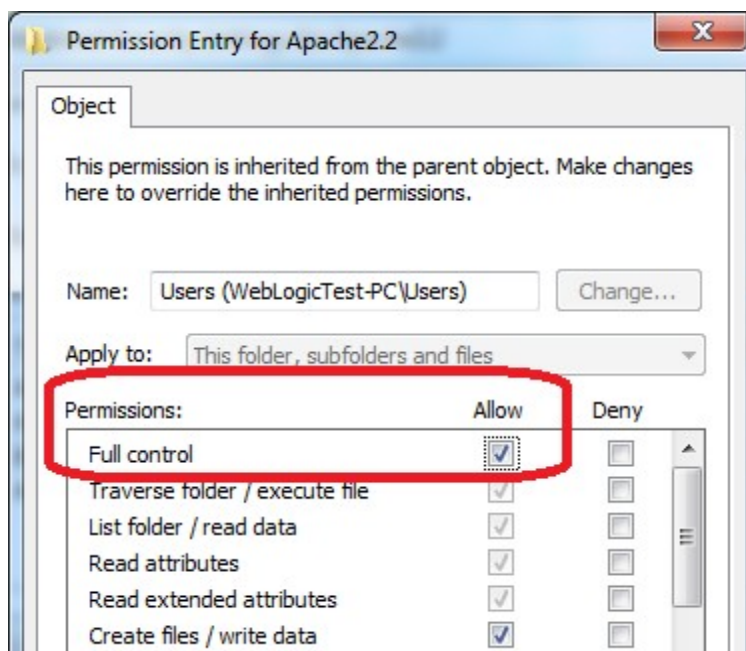
\_\_5. Click **Change Permissions**.

\_\_6. Select the **Users** entry (**add one if not present**).

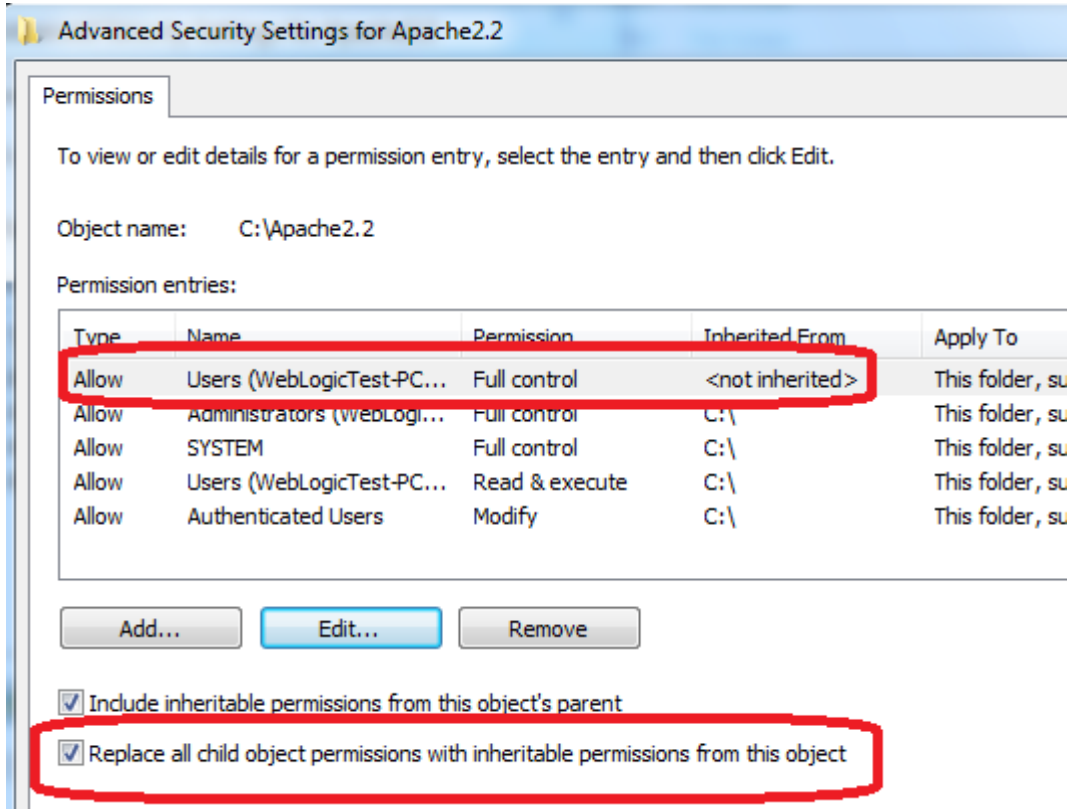


\_\_7. Click **Edit...**

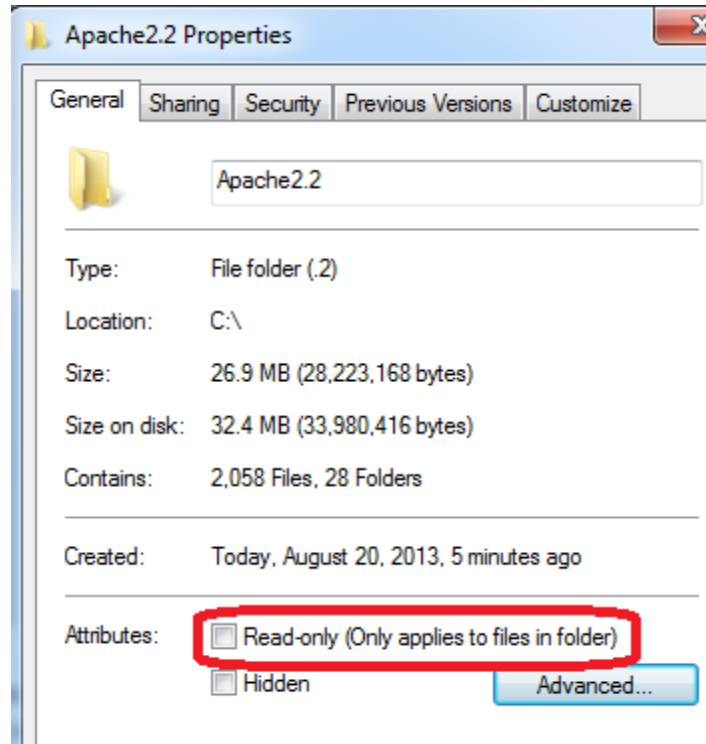
\_\_8. Check the **Allow** checkbox to the right of **Full Control** and click **OK**.



\_\_9. Select the checkbox for **Replace all child permissions with inheritable permissions from this objects** and then click **OK**.

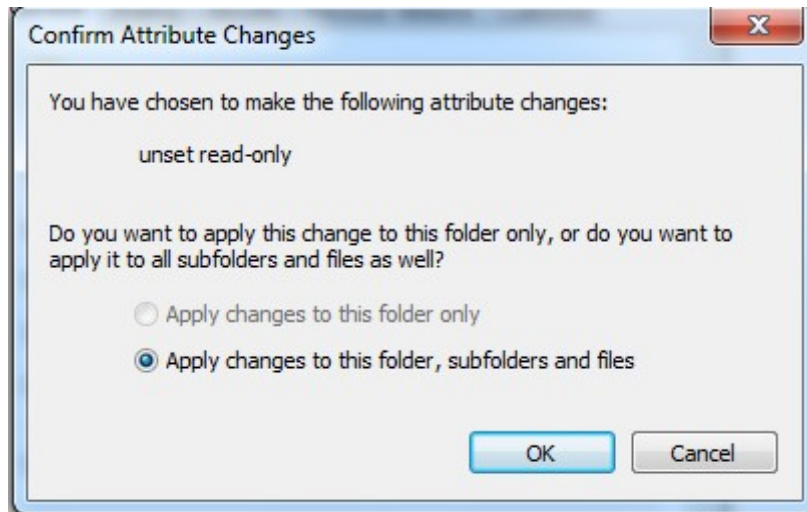


- \_\_10. Click **OK** to continue.
- \_\_11. A *Windows Security* dialog will open. Click **Yes**.
- \_\_12. Wait until Windows finishes updating security.
- \_\_13. Back in the *Advanced Security Settings* dialog, click **OK**.
- \_\_14. Back in the *Apache2.2 Properties* dialog, click **OK**.
- \_\_15. Right click C:\**Apache2.2** and select **Properties**.
- \_\_16. Uncheck the **Read-only** checkbox so files can be written to the directory.



\_\_17. Click **OK**.

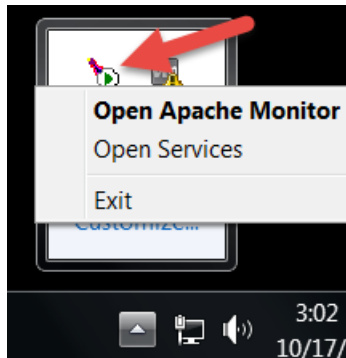
\_\_18. In the *Confirm Attribute Changes* dialog, click **OK**, so the change will be applied to this folder, subfolder, and any files.



\_\_19. Restart the computer and log in with the user that the student will use to do the labs.

\_\_20. Make sure the user has full access to the **C:\Apache2.2\conf** and **C:\Apache2.2\htdocs** folders.

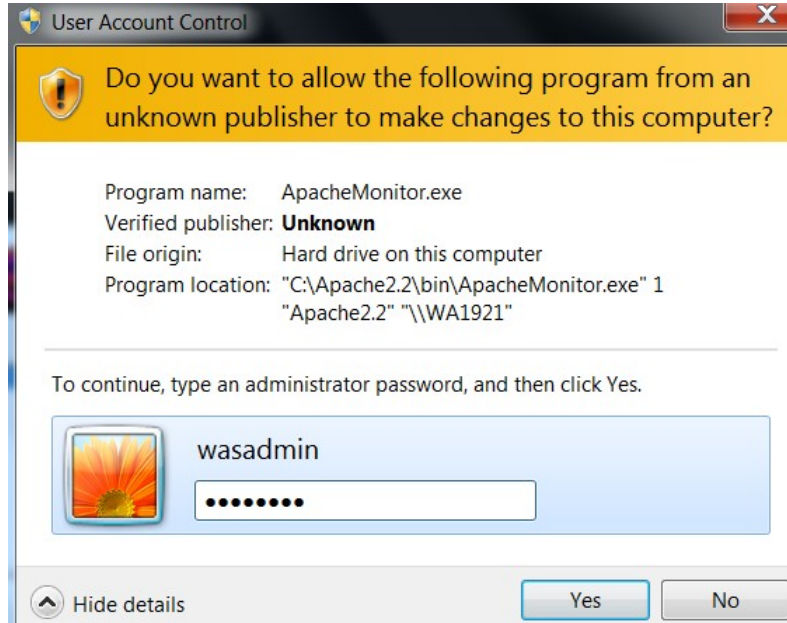
\_\_21. Right click the task bar and select **Open Apache Monitor**.



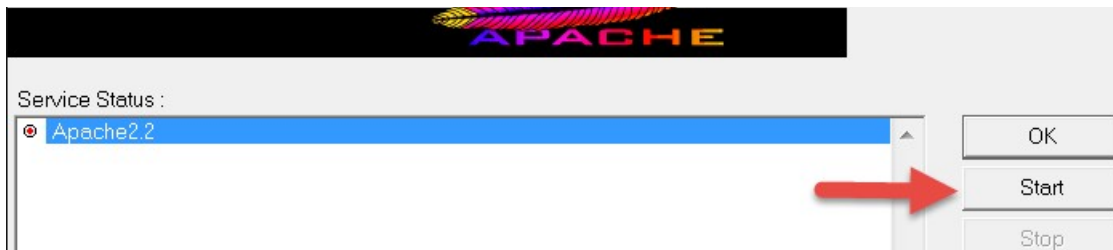
\_\_22. The **Open Apache Monitor** window will open then click **Stop**.



\_\_23. Enter the admin password if it is required and click **Yes**.



\_\_24. The server will stop, click **Start**.



The server will be started again.



**Note.** If you were asking for password to stop the server means that you need to configure the user to allow the student starting the server without asking permissions or you need to provide the admin password to the student to be able to stop and restart the server because this is required during the labs.

## **Part 7 - Summary**

**You have successfully installed the software for this course!**

If you have any question please contact us by email at [support@webagesolutions.com](mailto:support@webagesolutions.com)

From US and Canada call: 1-877-812-8887 ext. 26

International call: 416-406-3994 ext. 26