

WA2308 Continuous Integration with Jenkins Maven and Artifactory

Classroom Setup Guide

Web Age Solutions Inc.

Table of Contents

| | |
|---|----|
| Part 1 - Minimum Hardware Requirements | 3 |
| Part 2 - Minimum Software Requirements | 3 |
| Part 3 - Software Provided..... | 4 |
| Part 4 - Instructions..... | 4 |
| Part 5 - Installing JDK 8 Update 45..... | 5 |
| Part 6 - Verification of JDK 8 Update 45..... | 9 |
| Part 7 - Jenkins 2.89.3 Installation..... | 11 |
| Part 8 - Installing GIT..... | 16 |
| Part 9 - Summary..... | 21 |

Part 1 - Minimum Hardware Requirements

- 3 GB RAM minimum, 4 GB recommended
- 15 GB in the hard disk
- **Access to internet**

Part 2 - Minimum Software Requirements

- One of the following Windows versions:
 - Windows 7 (Professional, Enterprise, or Ultimate)
- Latest web browsers:
 - Chrome
 - Firefox
- Adobe Acrobat Reader
- Zip extraction utility
- JDK 8 Update 45 *
- Eclipse JEE Kepler SR1*
- Artifactory 3.3.0 OSS *
- Apache Tomcat 6.0.37 *
- Jenkins 2.89.3*
- GIT 2.8.1
- Apache Maven 3.3.9 *

* - indicates software provided as part of the courseware.

Part 3 - Software Provided

List of ZIP files required for this course and used in next steps on this document:

WA2308_REL_3_0.ZIP

Send an email to support@webagesolutions.com in order to obtain a copy of the software for this course if you haven't receive it yet.

All other software listed under Minimum Software Requirements is either commercially licensed software that you must provide or software that is freely available off the Internet.

Part 4 - Instructions

__1. Login with an administrator account. NOTE. THIS COURSE REQUIRES ADMIN PRIVILEGES TO THE STUDENT ACCOUNT.

__2. Makes sure the computer has internet access from the browser and the command line. If needed open the proxy.

__3. Extract **ZIP** file directly to **C:**

__4. Review that the following folders were created:

- **C:\LabFiles**
- **C:\Software\apache-maven-3.3.9**
- **C:\Software\apache-tomcat-6.0.37**
- **C:\Software\artifactory-3.3.0**
- **C:\Software\eclipse**
- **C:\Software\jenkins-2.89.3-Windows**

__5. Review that the following files were created:

- **C:\Software\Git-2.8.1-32-bit.exe**
- **C:\Software\jdk-8u45-windows-i586.exe**

__6. Install Mozilla and Chrome.

__7. Make sure the student will have full control under **C:\LabFiles** and **C:\Software** folders.

Part 5 - Installing JDK 8 Update 45

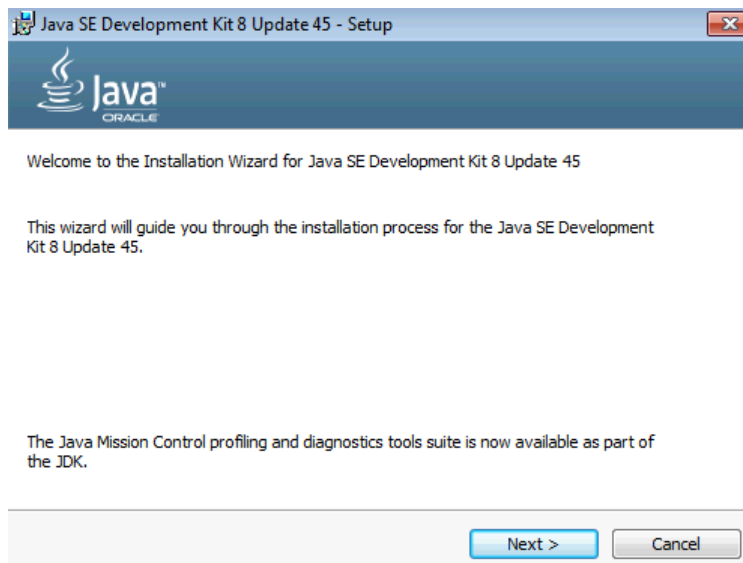
__1. Make sure there is no previous Java version already installed on the system. You can check this by using the Windows “Add/Remove Programs” utility. For the best compatibility with the labs it is suggested that all previous versions of Java be uninstalled before proceeding with these instructions. If this is an issue, please contact the setup support person for the course.

__2. From the **C:\Software** directory run the following file:

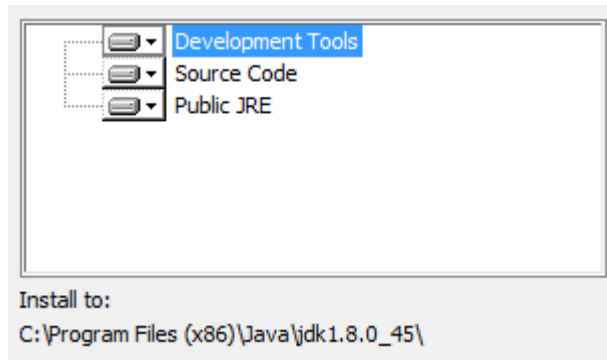
jdk-8u45-windows-i586

Note: If using prompted by a security prompt allow the installation to continue.

__3. When the initial step of the setup appears, press the **Next** button.



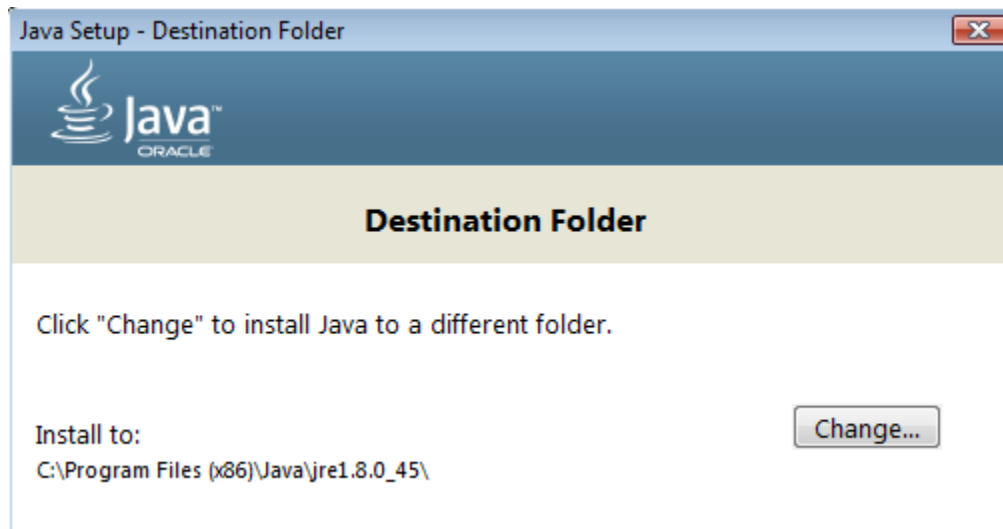
__4. Leave the defaults for installation location and options, and press the **Next** button.



Note: The installation directory may be slightly different.

The installation will begin installing files.

__5. The Destination Folder will appear, leave the default folder and click **Next**.



Note: The installation directory may be slightly different.

Wait until the software is completely installed.

__6. Click **Close**.



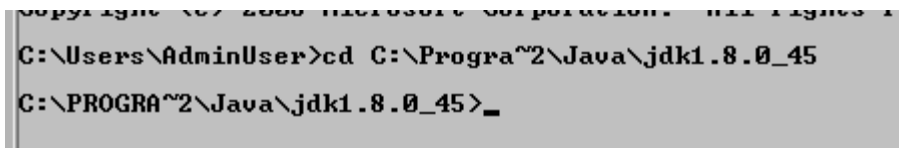
__7. Close any browser that appears asking to register the JDK software.

Set the Environment variables.

__1. Open a Command Prompt. You can do this with '**Start → Programs → Accessories → Command Prompt**'.

__2. Use the 'cd' command to attempt to switch to the following directory. This will verify the presence of a directory used later so make sure you do not get any errors about not being able to “find the path specified”.

```
cd C:\Progra~2\Java\jdk1.8.0_45
```



Note: The installation directory may be slightly different depending your operating system. You may need to use the following directory instead of the one listed above:

C:\Progra~1\Java\jdk1.8.0_45

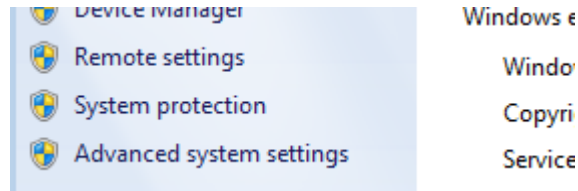
Some of the remaining steps will use the slightly different directory.

__3. Make sure you can reach the java folder and remember the value entered because you will use this value in the following steps.

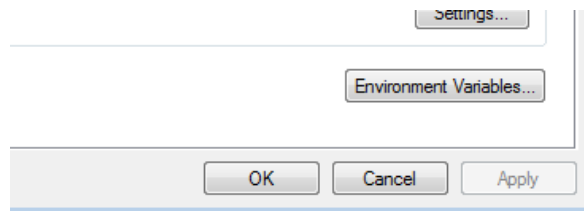
__4. Close the command prompt window.

__5. In the Windows Start Menu, right-click on the **Computer** link in the right-hand side of the Start panel, and then select **Properties**.

__6. Click on **Advanced system settings**.



__7. The system will display the **System Properties** dialog. Select the **Advanced** tab and click **Environment Variables**.

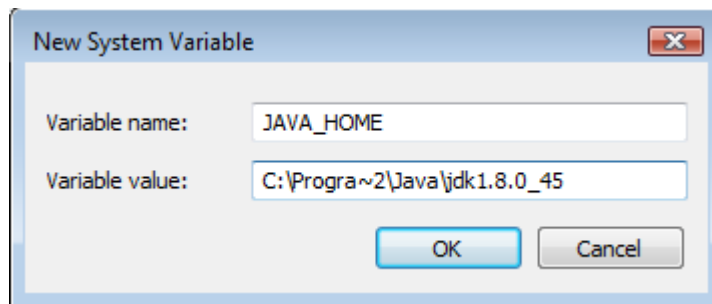


__8. Under the **System Variables** list, click the **New** button.

__9. Enter **JAVA_HOME** as Variable name.

__10. As Variable value enter the following. This should be the value you verified in the *Set the Environment variables section - step 2*.

C:\Progra~2\Java\jdk1.8.0_45



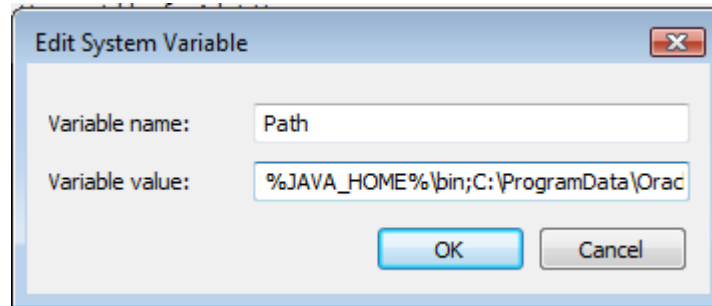
Note: If you are using a 32-bit OS you may have to use **C:\Progra~1\Java\jdk1.8.0_45**

__11. Click **OK** to create the variable.

__12. From the *System Variables* list, select **Path** and click **Edit**.

__13. At the beginning of the line enter the following. Make sure to include the semi-colon on the end:

%JAVA_HOME%\bin;



__14. Click **OK**.

__15. Click **OK** to close the *Environment Variables* window.

__16. Click **OK** to close the *System Properties* window.

Part 6 - Verification of JDK 8 Update 45

__1. Open a Windows command prompt. You can do this by selecting '**Start -> Run**', entering '**cmd**', and then pressing the **OK** button. Make sure it is a new command prompt and not one open previously.

__2. Enter the following command:

```
echo %PATH%
```

Make sure you see the Java 'bin' directory listed at the beginning.

Note: You may see **C:\Progra~1\Java\jdk1.8.0_45** or **C:\Progra~2\Java\jdk1.8.0_45**

__3. Enter the following command:

```
java -version
```

Make sure you see the response shown below.

```
C:\Users\AdminUser>java -version
java version "1.8.0_45"
Java(TM) SE Runtime Environment (build 1.8.0_45-b15)
Java HotSpot(TM) Client VM (build 25.45-b02, mixed mode)
C:\Users\AdminUser>_
```

Troubleshooting: If you get an error message means that your Environment variable was incorrectly entered, go back and fix the values.

__4. Enter the following command:

```
javac
```

Verify that you get the options to run the Java compiler:

```
C:\Users\AdminUser>javac
Usage: javac <options> <source files>
where possible options include:
-g                Generate all debugging info
-g:none          Generate no debugging info
-g:<lines,vars,source> Generate only some debugging info
```

__5. Enter the following command:

```
java -XshowSettings:all 2>&1 | findstr /c:"sun.arch.data.model"
```

```
C:\Users\wasadmin>java -XshowSettings:all 2>&1 | findstr /c:"sun.arch.data.model"
sun.arch.data.model = 32
```

Verify that it displays the correct value of 32. This indicates that it is 32-bit java that is installed.

Troubleshooting: If it displays 64 for the value, then you have 64 bit java installed and this will cause issues. Please uninstall the 64-bit java and reinstall the indicated 32-bit jdk.

__6. Close the command prompt window and any extra windows that are open.

Java has been installed.

Part 7 - Jenkins 2.89.3 Installation

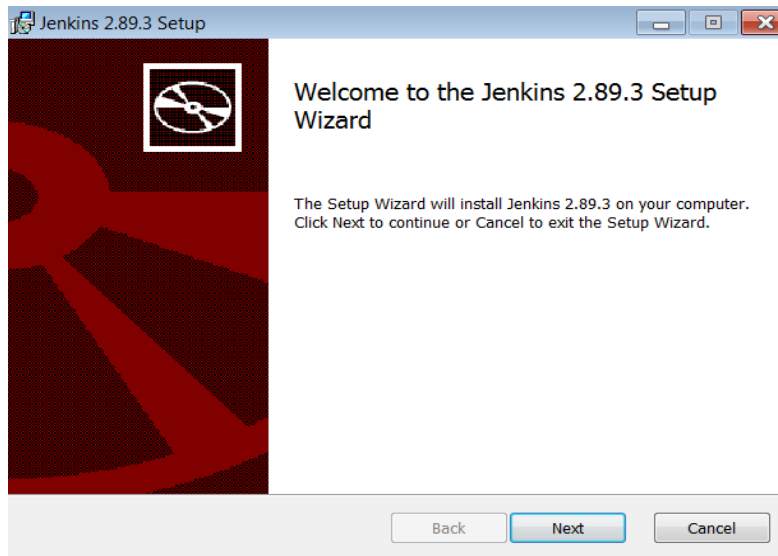
__1. Open a command prompt window and ensure that the Java JDK is installed.

```
java -version
```

```
C:\Users\wasadmin>java -version
java version "1.8.0_45"
Java(TM) SE Runtime Environment (build 1.8.0_45-b14)
Java HotSpot(TM) Client VM (build 25.45-b02, mixed mode)
```

__2. In Windows Explorer, navigate to **C:\Software\jenkins-2.89.3-Windows**

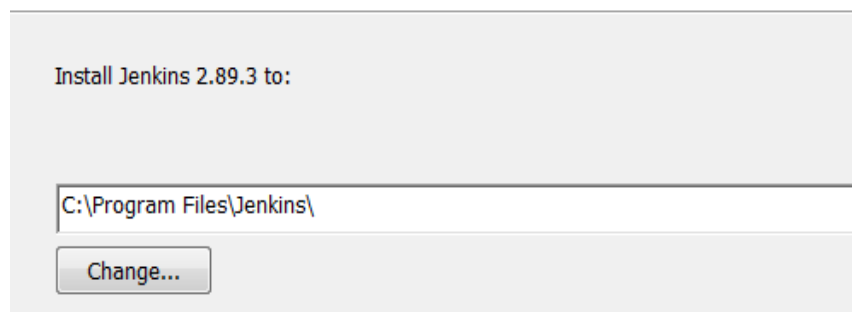
__3. Double-click on '**jenkins.msi**'. The installer will show the initial dialog. Click **Next**.



__4. On the **Destination Folder** panel, leave the defaults and click **Next**.

Destination Folder

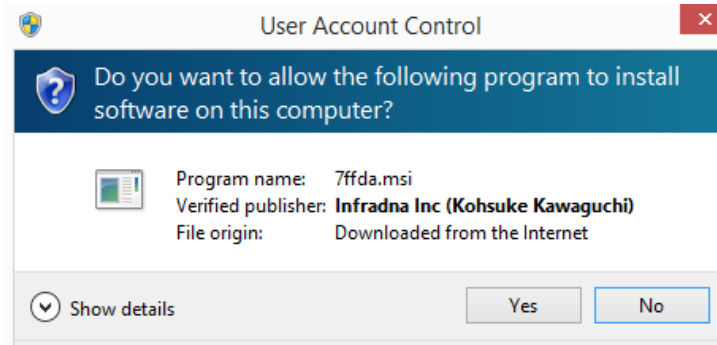
Click Next to install to the default folder or click Change to choose another.



Your destination folder may be different.

__5. On the **Ready to Install...** panel, click **Install**.

__6. Windows may show a security dialog. If it does, click **Yes**.



__7. In the final dialog panel, click **Finish**.

Completed the Jenkins 2.89.3 Setup Wizard

Click the Finish button to exit the Setup Wizard.

__8. If you see the **Create First Admin User** screen then click Jenkins.



__9. If you see the following click **Don't show this message again**.



The installer will open a browser window to the Jenkins home page. The page shows the location of a file where you can find the initial administration password, and also a text box to enter the password into.

Unlock Jenkins

To ensure Jenkins is securely set up by the administrator, a password has been written to the log (not sure where to find it?) and this file on the server:

```
C:\Program Files\Jenkins\secrets\initialAdminPassword
```

__10. Open the indicated file with an editor such as Notepad, and copy the password to the clipboard with Ctrl-C.

__11. Paste the password into the **Adminstrator Password** box.

```
C:\Program Files\Jenkins\secrets\initialAdminPassword
```

Please copy the password from either location and paste it below.

Administrator password

__12. Click **Continue**.

__13. If you are prompted to save the password just close that window.

__14. Click on **Install Suggested Plugins**.

Customize Jenkins

Plugins extend Jenkins with additional features to support many different needs.

Install suggested plugins

Install plugins the Jenkins community finds most useful.

Select plugins to install

Select and install plugins most suitable for your needs.

__15. Getting Started will begin. Wait until is done.

Getting Started

| | | | | |
|----------------------|-------------------------------------|-------------------------------|------------------------------|--------------|
| ✓ Folders Plugin | ✓ OWASP Markup Formatter Plugin | ✓ build timeout plugin | ✓ Credentials Binding Plugin | ** Jenkins G |
| ✓ Timestamper | ✓ Workspace Cleanup Plugin | ✓ Ant Plugin | ✓ Gradle Plugin | ** Jenkins G |
| ✓ Pipeline | ⌚ GitHub Organization Folder Plugin | ✓ Pipeline: Stage View Plugin | ✓ Git plugin | ** Pipeline: |
| ⌚ Subversion Plug-in | ⌚ SSH Slaves plugin | ✓ Matrix Authorization | ✓ PAM Authentication | Libraries |

__16. In the **Create First Admin User** screen. Enter the following fields:

Username: wasadmin

Password: wasadmin

Confirm Password: wasadmin

Full name: Administrator

E-mail address: user@example.com

__17. When the input looks like below, click **Save and Finish**.

Create First Admin User

Username:

Password:

Confirm password:

Full name:

E-mail address:

__18. If you are prompted to save the password just close that window.

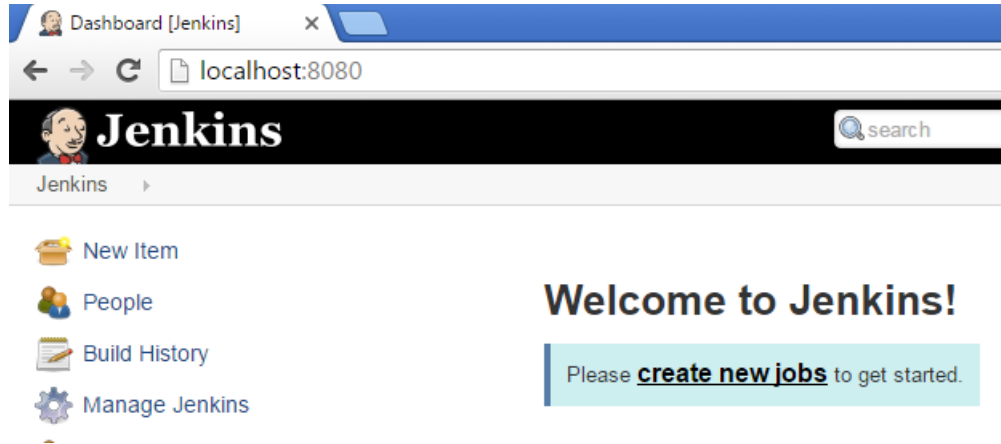
__19. You will see that Jenkins is ready. Click **Start using Jenkins**.

Jenkins is ready!

Your Jenkins setup is complete.

Start using Jenkins

__20. Jenkins will open.



__21. Jenkins installation is complete. Close the browser.

__22. Close all open windows.

Part 8 - Installing GIT

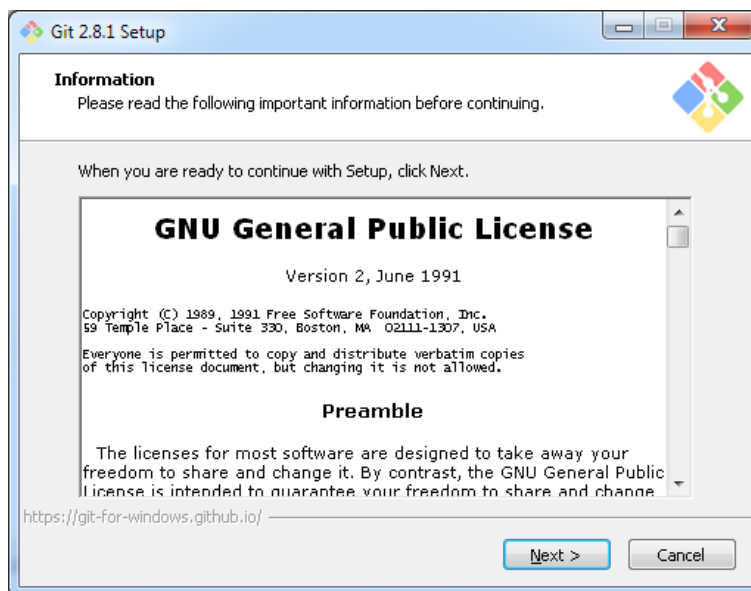
IMPORTANT: Setup is easy but you need to make sure you do the change in Step 7.

__1. From the **C:\Software** directory run the following file:

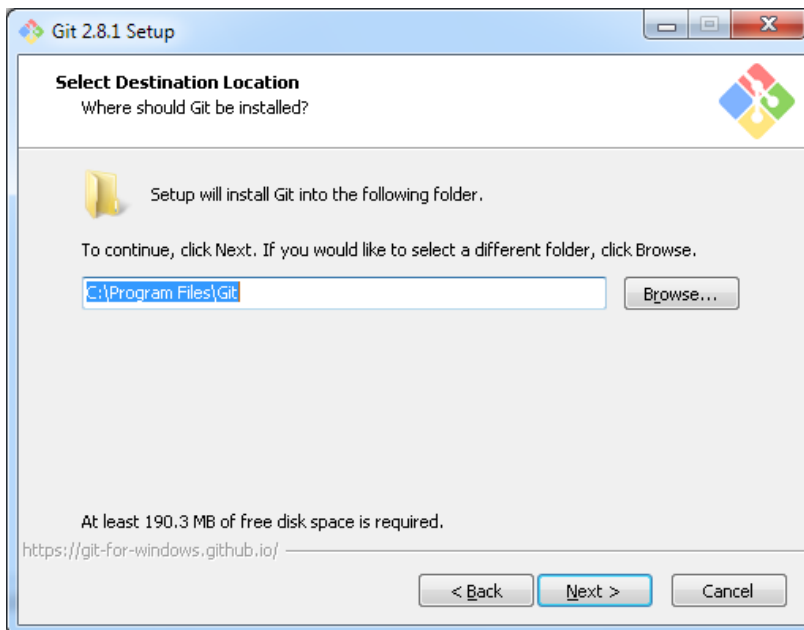
Git-2.8.1-32-bit.exe

__2. You may need to allow the program to run.

__3. Click **Next**.

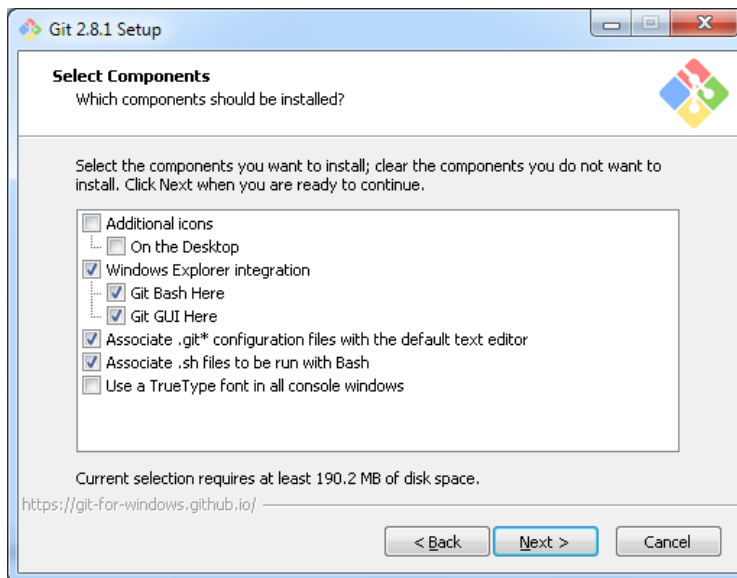


__4. Click **Next**.

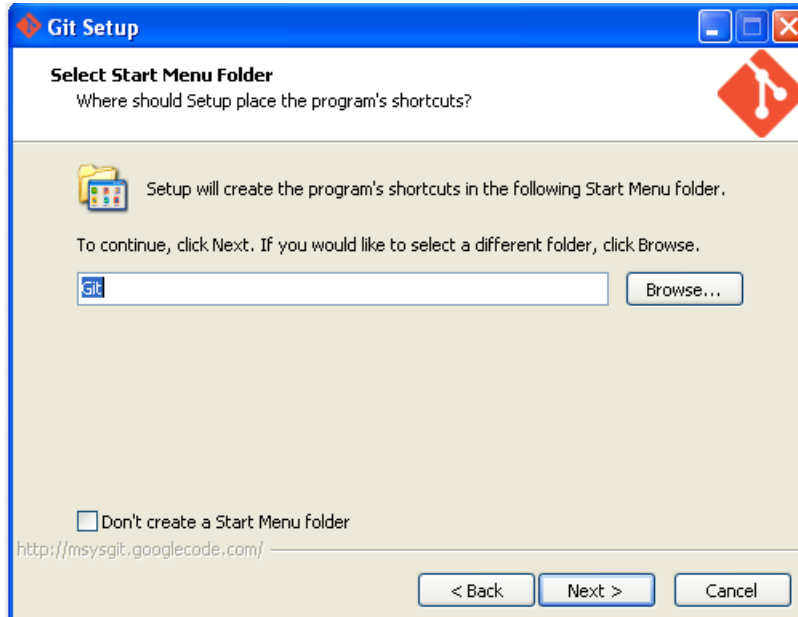


Note. You folder may be different.

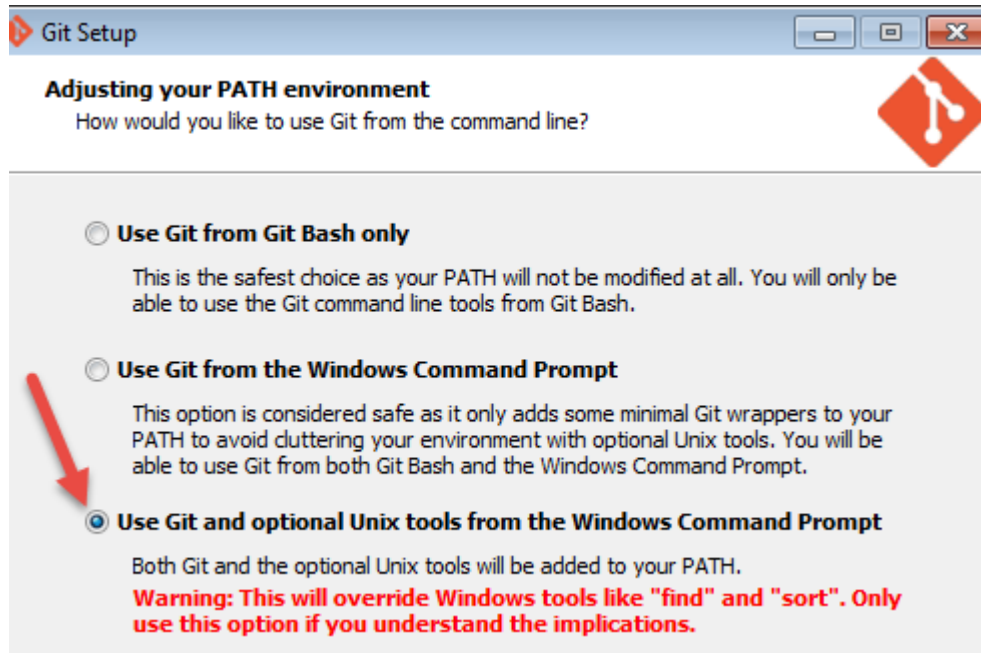
5. Click **Next**.



6. Click **Next**.

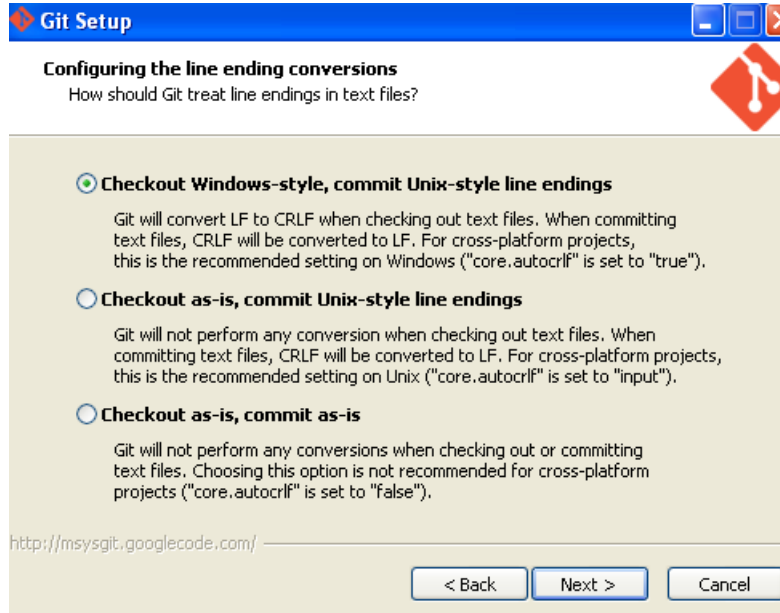


__7. Select **Use Git and Optional Unix tools from the Windows Command Prompt**.

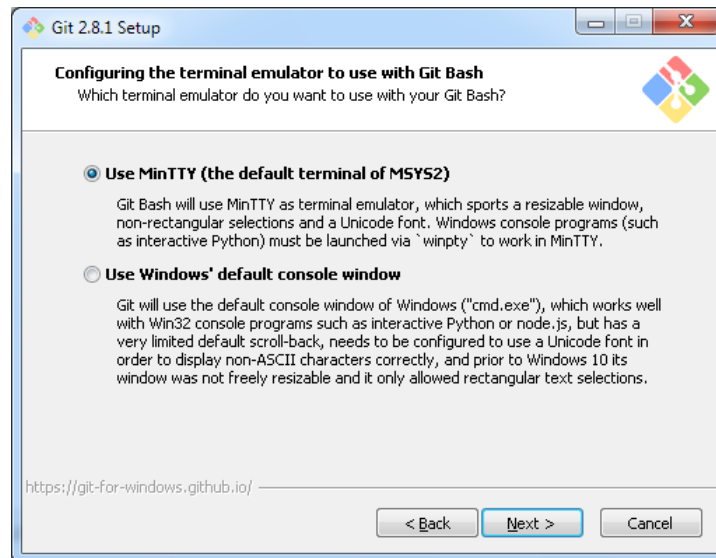


__8. Make sure you select the 3rd option as shown above and then click **Next**.

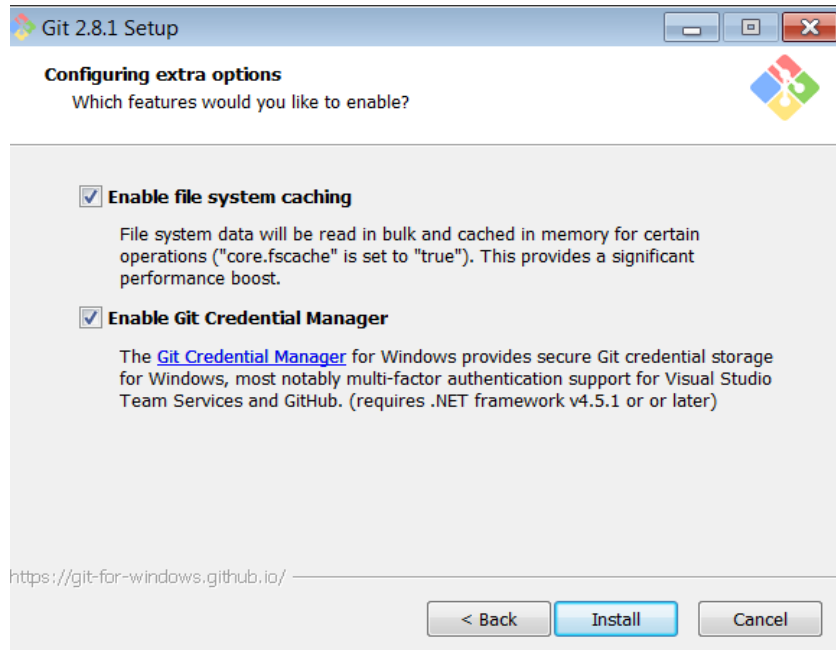
__9. Click **Next**.



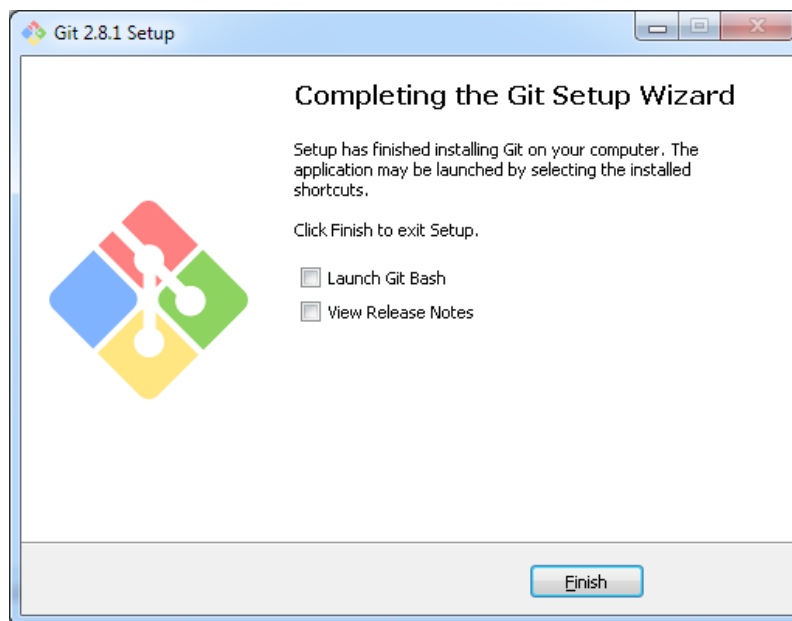
10. Click **Next**.



11. Leave defaults and click **Install**.



__12. De-select **View Release Notes**, and then click **Finish**.



__13. Close all open files.

Part 9 - Summary

You have successfully installed the software for this course!

If you have any question please contact us by email at support@webagesolutions.com

From US and Canada call: 1-877-812-8887 ext. 26

International call: 416-406-3994 ext. 26