

WA2261 IBM Business Process Manager 8.5 Programming Using Integration Designer

Classroom Setup Guide

Web Age Solutions Inc.

Table of Contents

Part 1 - Minimum Hardware.....	3
Part 2 - Minimum Software.....	3
Part 3 - Software Provided.....	4
Part 4 - Instructions.....	4
Part 5 - Installing IBM Integration Designer 8.5.....	5
Part 6 - Assign privileges in DB2 admin group.....	11
Part 7 - Modify File Permissions.....	13
Part 8 - Verification of the installation of IID 8.5.....	15

Part 1 - Minimum Hardware

- CPU to meet the minimum requirements of the operating system being used
- 3 GB RAM minimum, 6 GB recommended
- 40 GB in the hard disk
- USB port

Part 2 - Minimum Software

- Windows Vista, Windows 7, Windows Server 2008, Windows 8
- Zip extraction utility
- One of the following web browsers
 - Internet Explorer 9 or higher
 - Latest Chrome or Firefox.
- Adobe Flash Player 13 or higher
- Adobe Acrobat Reader
- IBM Integration Designer 8.5 *

* - indicates software provided as part of the courseware.

Part 3 - Software Provided

Name of the required files:

- **WA2261_1.ZIP**
- **WA2261_2.ZIP**
- **WA2261_3.ZIP**

All other software listed under Minimum Software Requirements is either commercially licensed software that you must provide or software that is freely available off the Internet.

Part 4 - Instructions

__1. Extract the **3 .ZIP** files directly to **C:**

__2. Review that the following folders were created:

- **C:\LabFiles**
- **C:\Software\IID_8.5**

__3. Make sure you installed Adobe Flash Player 13 or higher.

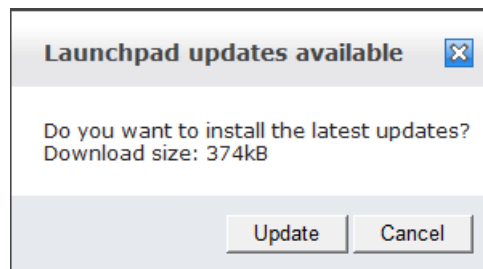
Part 5 - Installing IBM Integration Designer 8.5



Warning: You cannot use ghosting or disk imaging to install this software. You must install the software on each machine separately. Do not change the computer hostname after this software is installed. Also, do not install this software from a network share. It will only function partially if you do.

Approximately time for installation of IID 8.5: 90 minutes. It is recommended turning off the firewall to avoid messages during the installation. Make sure you have at least 20 GB free in the hard disk.

- __1. Open **C:\Software\IID_8.5**
- __2. Right click **launchpad.exe** and select **Run as Administrator**.
- __3. If you are presented with an updates window, click **Cancel**.

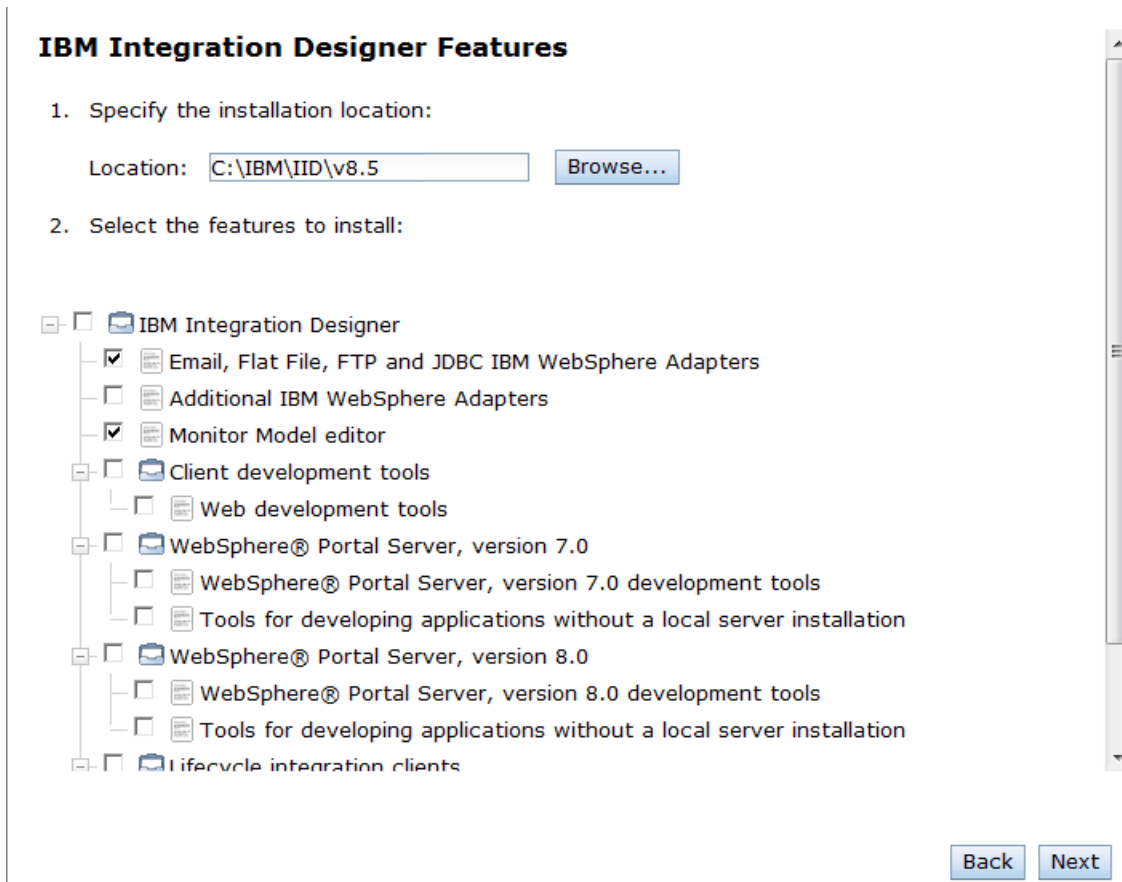


- __4. Confirm any Windows security prompts that are presented during the installation.

The *Welcome to WebSphere Integration Designer Installation* window will open.

5. Select **IBM Integration Designer for IBM Business Process Manager Advanced – Process Server** and click **Next**.

6. The *IBM Integration Designer Features* window will open, leave the defaults and click **Next**.



__7. The *Install a Process Server* window will open. Leave the default **hostname** and **location**.

__8. Enter **wasadmin** as **Username** and **Password** for the **cell administrative account**.

__9. Enter **admin** as **Username** and **Password** for the **deployment environment account**.

Install a Process Server

Specify basic information about the Process Server that you want to install.

1. Enter the name of the host:

Hostname:

2. Specify the installation location:

Location:

3. Choose a username and password for the cell administrative account. [Learn more.](#)

Username: Password:
Confirm:

4. Choose a username and password for the deployment environment administrative account. [Learn more.](#)

Username: Password:
Confirm:

__10. Make your window looks like above and then click **Next**.

__11. The *Set up the database server* window will open. Enter **db2admin** as Username and password and click **Next**.

Set up the database server

DB2 Express will be installed for you. Choose a username and password for the database:

Username: Password:

Confirm:

__12. The *Installation summary* window will open. **Uncheck** the box to receive updates and **check** the box to accept the license.

Installation summary

The following options will be installed. If this list is not correct, click **Back** to make corrections.

- Integration Designer installation directory: C:\IBM\IID\v8.5
- Process Server installation directory: C:\IBM\IID\PS\v8.5
- Process Server environment: Non-Production
- IBM Integration Designer Features
 - Email, Flat File, FTP and JDBC IBM WebSphere Adapters
 - Monitor Model editor

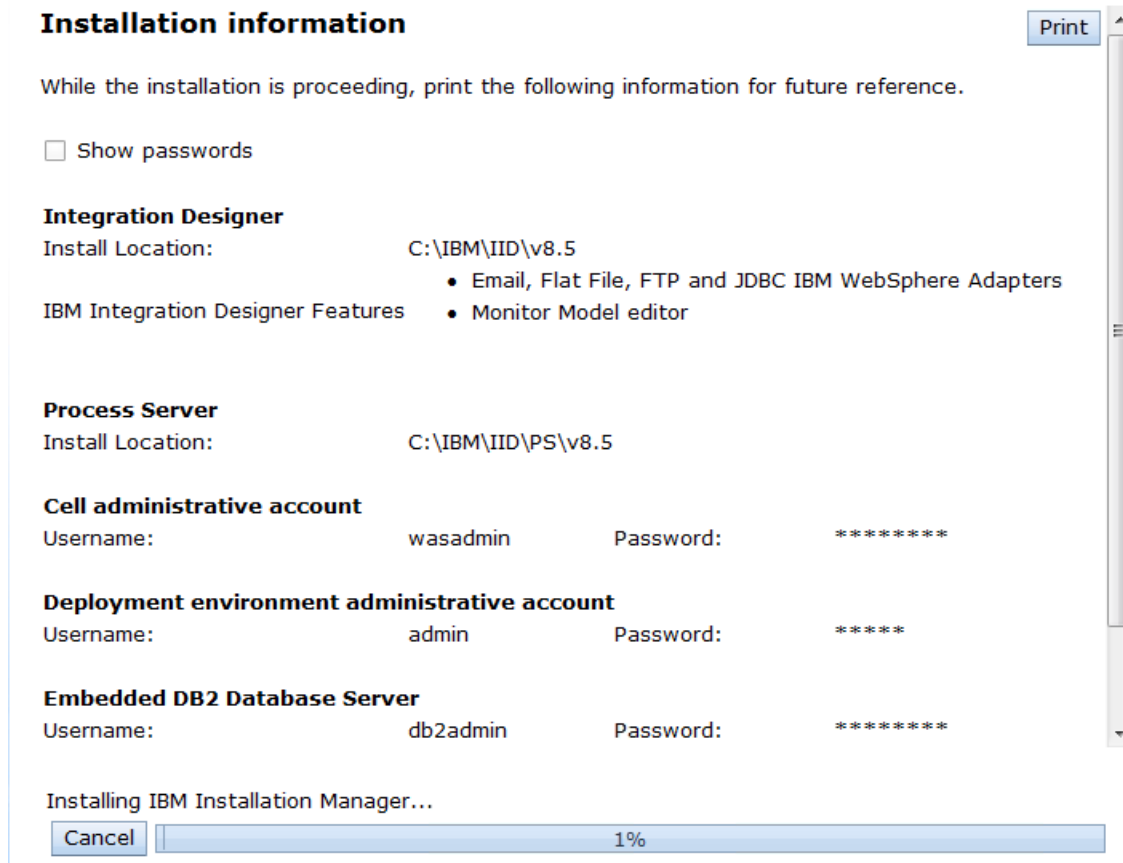
Use your support account to include updates with the installation. [I don't have a support account.](#)

User Name: Password:

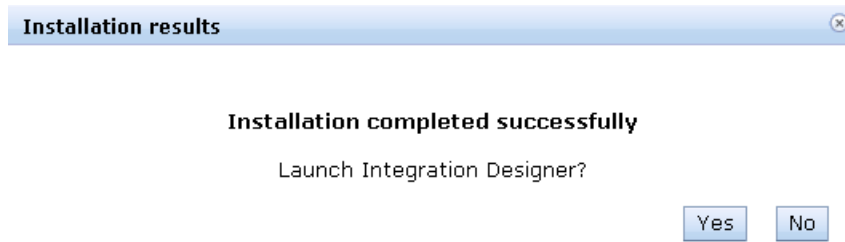
I have read and accepted the [license agreement](#) and [notices](#)

__13. Click **Install Software**.

__14. The *Installation information* window will open, wait patiently during installation completes.

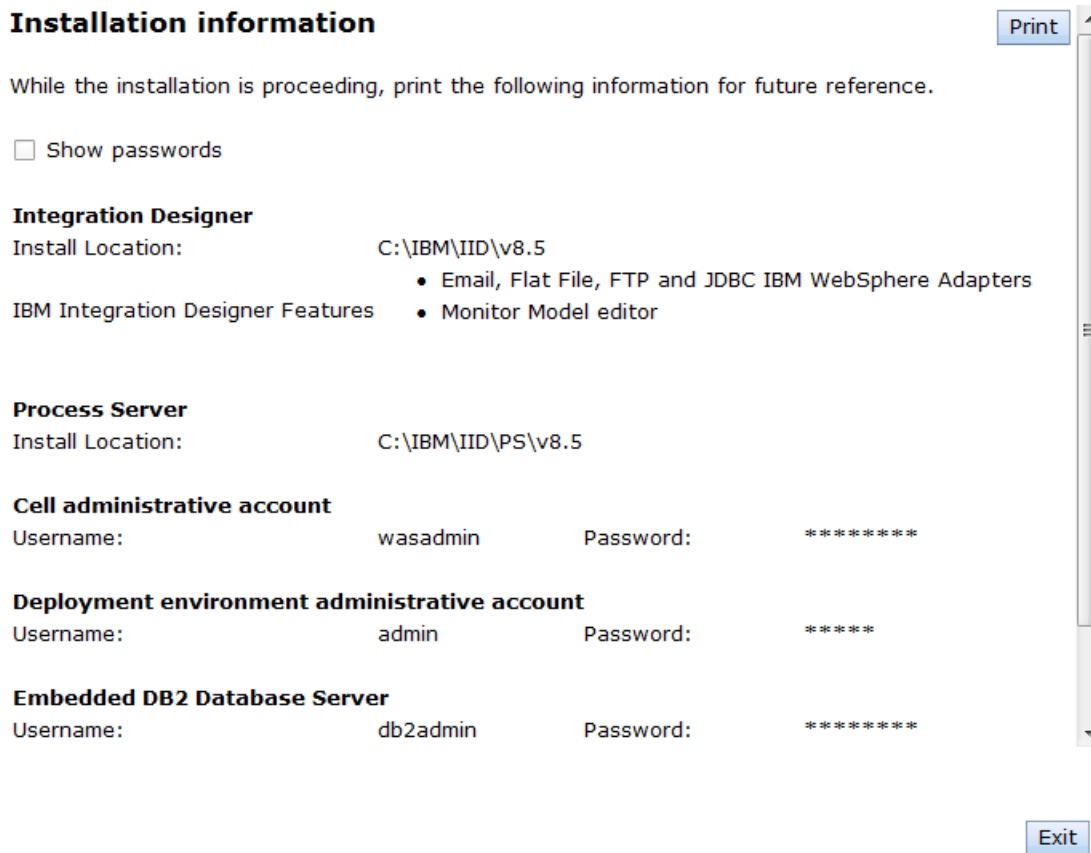


__15. After a while you will get the following message:

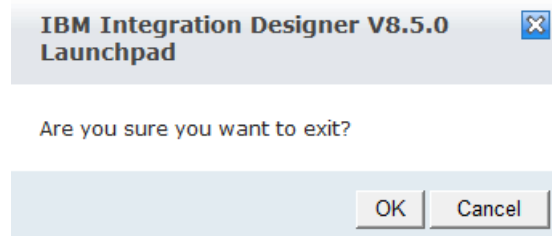


__16. Click **No**.

__17. The *Installation information* window will show the results, just click **Exit**.



__18. Click **OK** to exit.

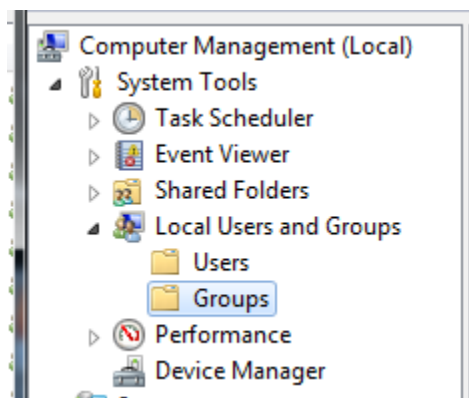


Part 6 - Assign privileges in DB2 admin group

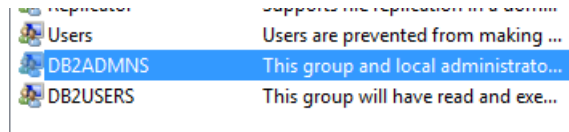
DB2 was installed with the IBM Business Process Manager installation but only the 'db2admin' user has appropriate privileges. This means that is students login with a different ID, they will have permission problems using DB2.

__1. Open the 'Local Computer Management' utility. Doing this varies by Windows version but generally right clicking on an icon for 'Computer' (in a Windows Explorer window or the Start menu) and selecting 'Manage' will do it.

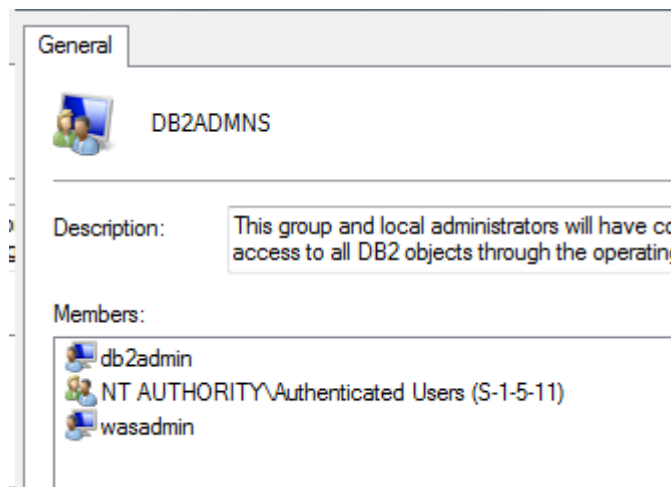
__2. Expand '**Computer Management (Local) → System Tools → Local Users and Groups → Groups**'



3. With the '**Groups**' folder selected on the left, open the properties of the '**DB2ADMNS**' group on the right. The easiest way is to double click the group.



4. With the properties of the '**DB2ADMNS**' group open, add either the individual IDs on the computer the students will use to login or all 'Authenticated Users'. The method for doing this will differ depending on Windows version but you should see the configured users/groups added to the 'Members' list of the 'DB2ADMNS' group.



Note: Users in the 'DB2ADMNS' group have the proper privileges to run the DB2 services. You will get a DB2 error prompt appear when you login if you don't have the proper permission.

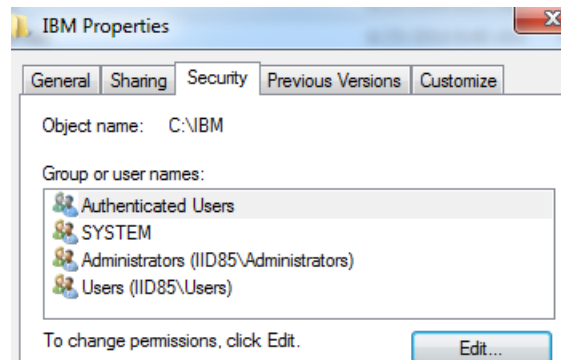
5. Close any open dialog boxes and the 'Computer Management' window.

Part 7 - Modify File Permissions

Note: These steps allow full access to the directories used by the WebSphere install. This is required so that students can start the WebSphere server from within development tools and will allow the WebSphere server to write to the log files. Without these steps the students won't be able to start the WebSphere server and won't be able to do the labs.

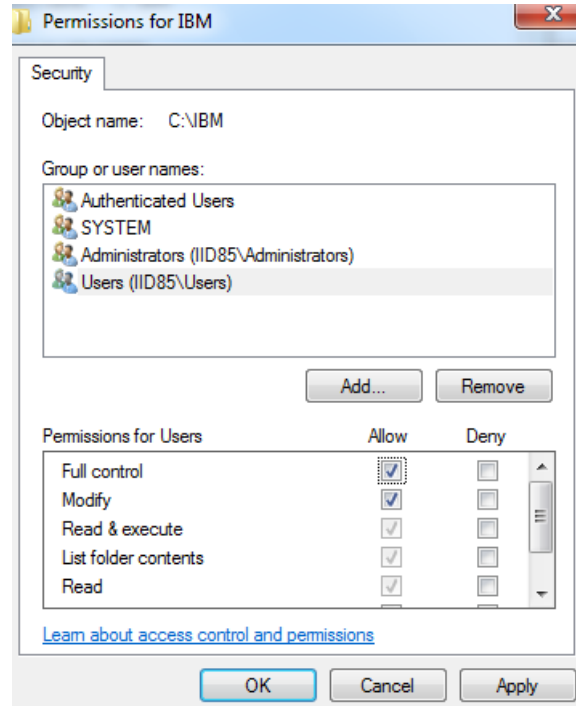
These steps allow full access to the directories used by the WebSphere install. The steps to accomplish this may vary by Windows version but the goal is the same, granting access to all users to the WebSphere install. If you have questions about how to accomplish this contact the setup support person for the class.

- __1. Right click C:\IBM and select **Properties**.
- __2. Click the **Security** tab.
- __3. Click **Edit**.



__4. Select the **Users** entry (**add one if not present**).

__5. Check **Full Control** permission option and click **OK**.



__6. Wait until the process finishes updating security, and close all windows when is done.

__7. Now give full privileges to **C:\LabFiles** to all users as you did it to the IBM folder.

__8. Delete the **C:\Software\IID_8.5** folder to release space for the students during the labs and Empty the Recycle Bin. Make sure the computer has at least 10 Gb free.

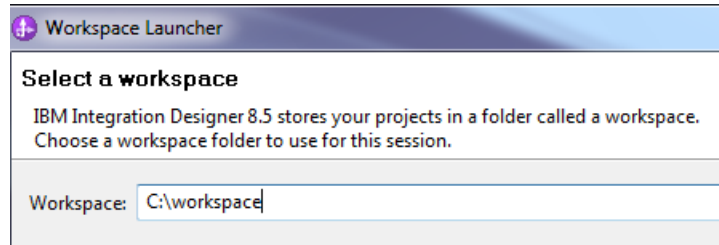
__9. Restart the computer and login with the user that the student will use to do the Labs.

__10. Make sure the user has full access to **C:\LabFiles** as well as **C:\IBM** folders.

Part 8 - Verification of the installation of IID 8.5

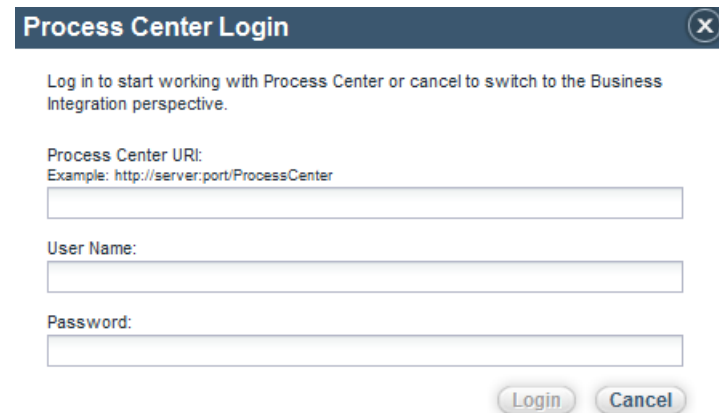
__1. From start menu select: **All Programs > IBM > IBM Integration Designer -> IBM Integration Designer 8.5**

__2. Change the workspace to **C:\workspace** and click **OK**.

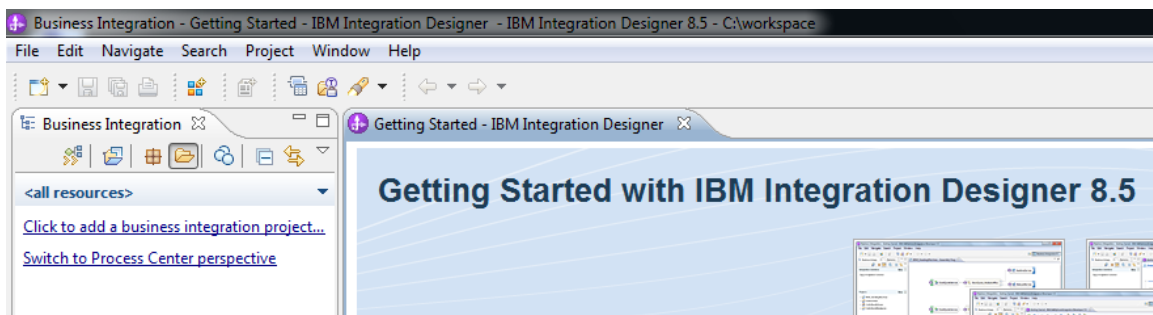


__3. If you are prompted by the Windows firewall about blocking a program unblock it.

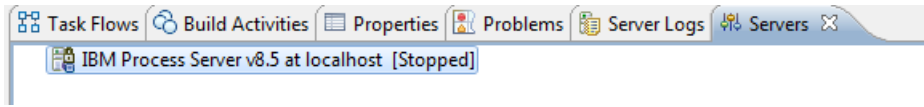
__4. You will be prompted to login in the process center, simply click **Cancel**.



The Getting Started page will open.

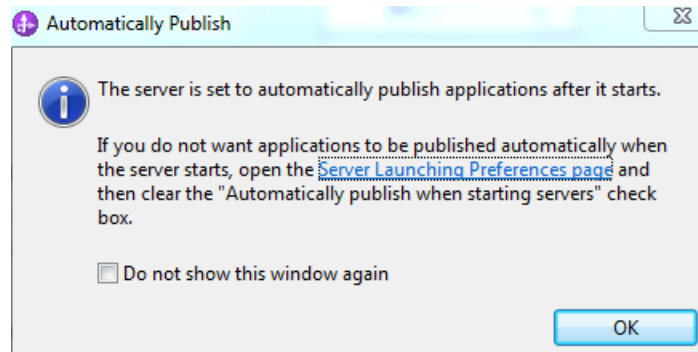


__5. Locate and click on the **Servers** tab at the bottom.

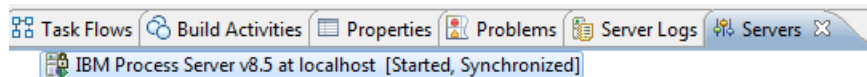


__6. Right click the **IBM Process Server v8.5 at local host** server and select **Start**. You will see at the bottom messages that the server is starting, wait patiently, the first time the server is started launch many services.

__7. Click **OK** if the automatically publish message open.

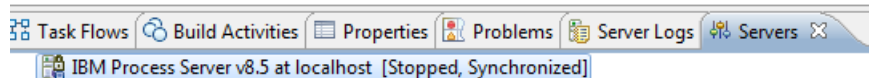


__8. Make sure the Server status changed to **[Started, Synchronized]**.



__9. Now, right click the server and select **Stop**.

Server status will change to **[Stopped, Synchronized]**.



__10. Exit by selecting **File** → **Exit** from the menu bar.

__11. Close all the open files.

Congratulations! The product has successfully been installed.

Congratulations. The installation for this course has been completed.

