

**WA2256 Responsive Mobile Web
Development with HTML5, CSS3,
JavaScript, and jQuery Mobile**

Classroom Setup Guide

Web Age Solutions Inc.

Table of Contents

Part 1 - Minimum Hardware Requirements	3
Part 2 - Minimum Software Requirements	3
Part 3 - Software Provided.....	4
Part 4 - Instructions.....	4
Part 5 - Installing Apache HTTP Server 2.2.14.....	5
Part 6 - Modify File Permissions (Windows Vista, Windows 7, Windows Server 2008, or Windows 8).....	9

Part 1 - Minimum Hardware Requirements

- 2 GHz Pentium IV
- 1GB RAM minimum, 2 GB recommended
- 10 GB in the hard disk
- Sound card
- Speakers
- Internet connection

Part 2 - Minimum Software Requirements

- One of the following Windows versions:
 - Windows XP Professional with SP3
 - Windows Vista SP1 (Business, Enterprise, or Ultimate)
 - Windows 7 (Professional, Enterprise, or Ultimate)
 - Windows 8
- Internet Explorer 8, 9 or 10
- Some of the labs require a browser other than Internet Explorer. You must have one of the following browsers available on the machine:
 - Latest Firefox (<http://www.mozilla.com/firefox/>)
 - Latest Chrome (<http://www.google.com/chrome>)
- Apache Web Server 2.2.14 *
- Notepad++ 6.5 *

* - indicates software provided as part of the courseware.

Part 3 - Software Provided

You will receive the following file:

- **WA2256.ZIP**

All other software listed under Minimum Software Requirements is either commercially licensed software that you must provide or software that is freely available off the Internet.

Part 4 - Instructions

__1. Make sure the account that you are using to install the software has administrative privileges and if the students won't use the same account then add privileges in the Apache folder (you will install it later), usually located under C:\Program Files. During the class the student has to access to the Apache location and do changes there.

__2. Extract the **WA2256.ZIP** file to C:\

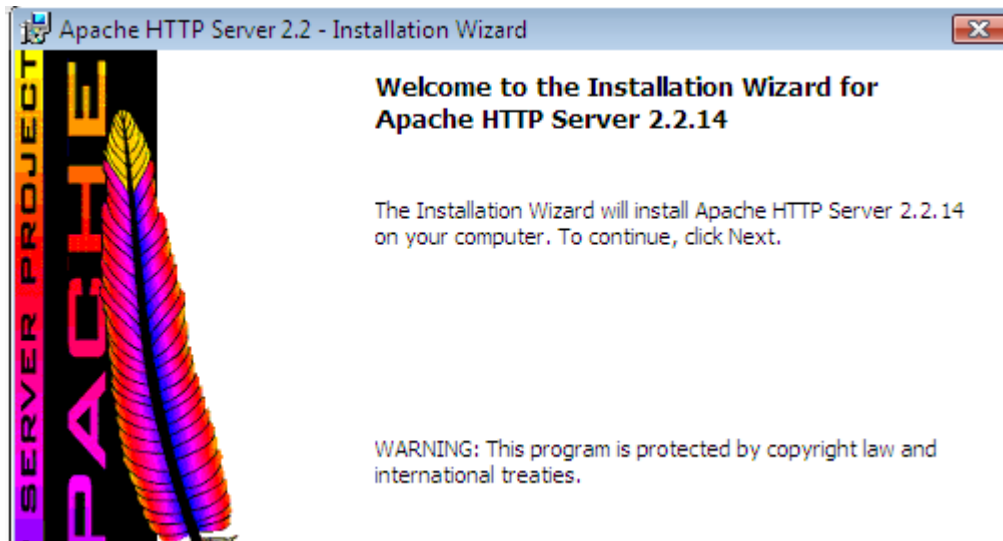
__3. Review that the following folders were created:

- **C:\LabFiles**
- **C:\Software**
- **C:\Software\Apache**
- **C:\Software\NotepadPlus**

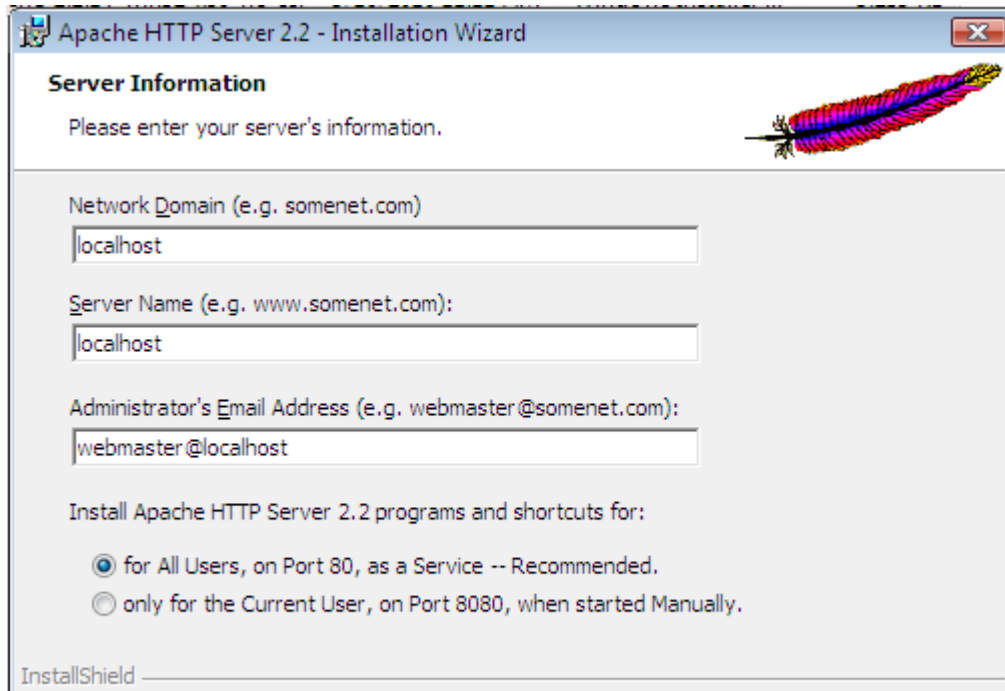
__4. Make sure you installed Chrome and/or Mozilla Firefox as these browsers are required during the labs.

Part 5 - Installing Apache HTTP Server 2.2.14

- __1. Login as the administrative ID created for the class.
- __2. Run **apache_2.2.14-win32-x86-no_ssl.msi** from the **C:\Software\Apache** folder.
- __3. In the Welcome screen, click **Next**.

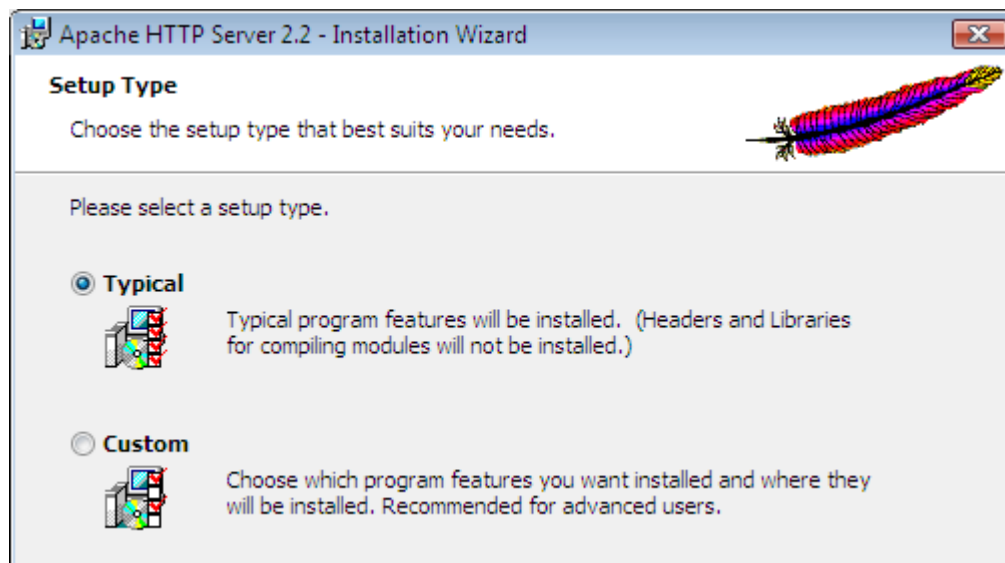


- __4. Accept the License Agreement and click **Next**.
- __5. In the *Read This First* page, click **Next**.
- __6. Enter **localhost** for **Network Domain** and **Server Name**. Enter **webmaster@localhost** for **Administrator's E-mail Address** as shown below.

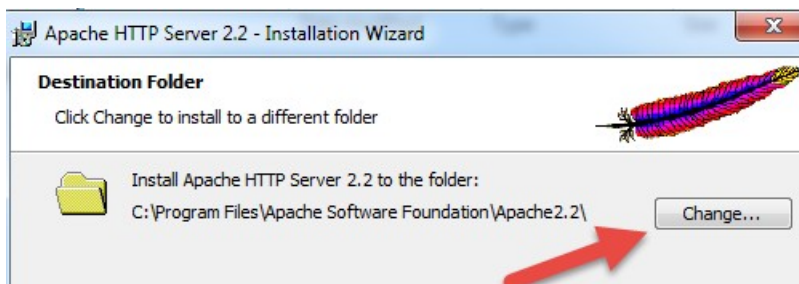


__7. Click the **Next** button.

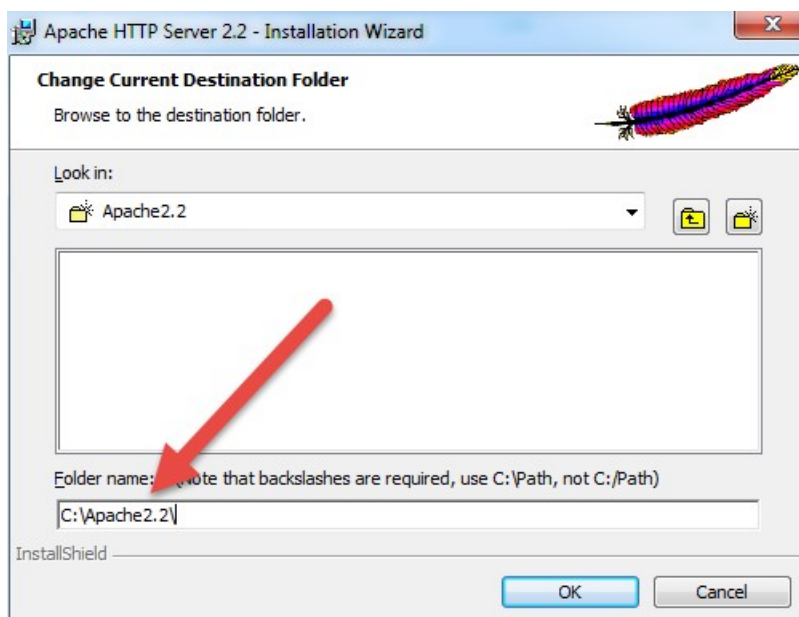
__8. Select **Typical** installation and click **Next**.



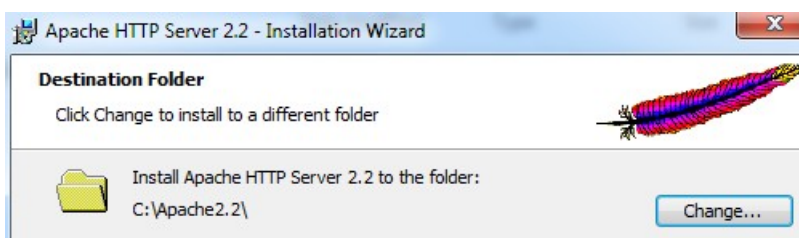
__9. Click the **Change** button to change the destination folder.



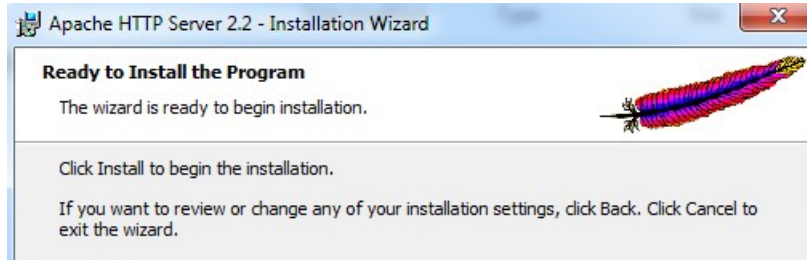
__10. Then change the **Folder name** to **C:\Apache2.2** and click **OK**.



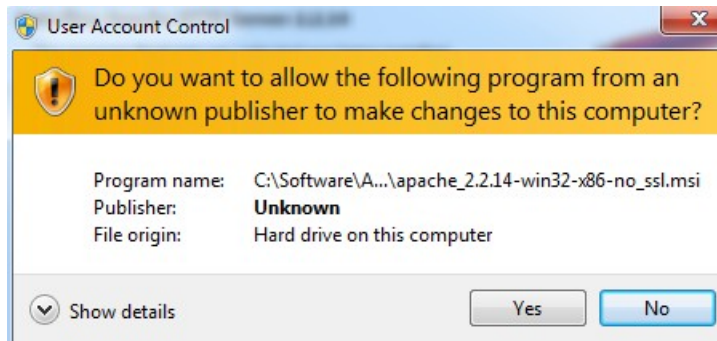
__11. Back in the *Destination Folder* page, confirm the new folder name (**C:\Apache2.2**) and click **Next**.



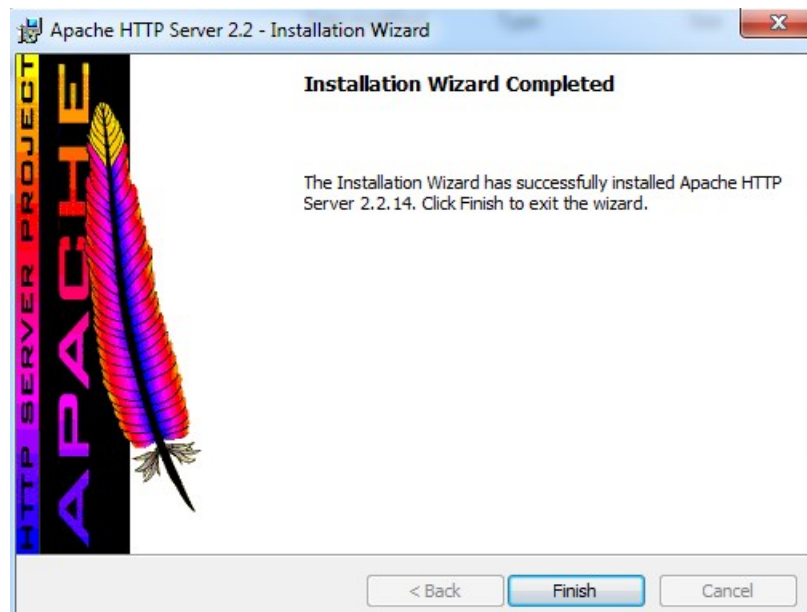
__12. Click **Install** to start the installation.



__13. If prompted by Windows security, click **Yes** to allow the installation to proceed.



__14. When the *Installation Wizard Completed* message appears, click **Finish**.



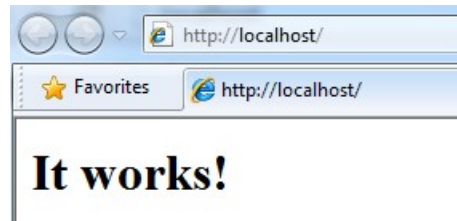
__15. Verify that the Apache Server is running on the task bar of Windows.



__16. Open a browser and type:

http://localhost

__17. Verify you see the message: **It works!**



Apache HTTP Server 2.2.14 is installed.

Part 6 - Modify File Permissions (Windows Vista, Windows 7, Windows Server 2008, or Windows 8)

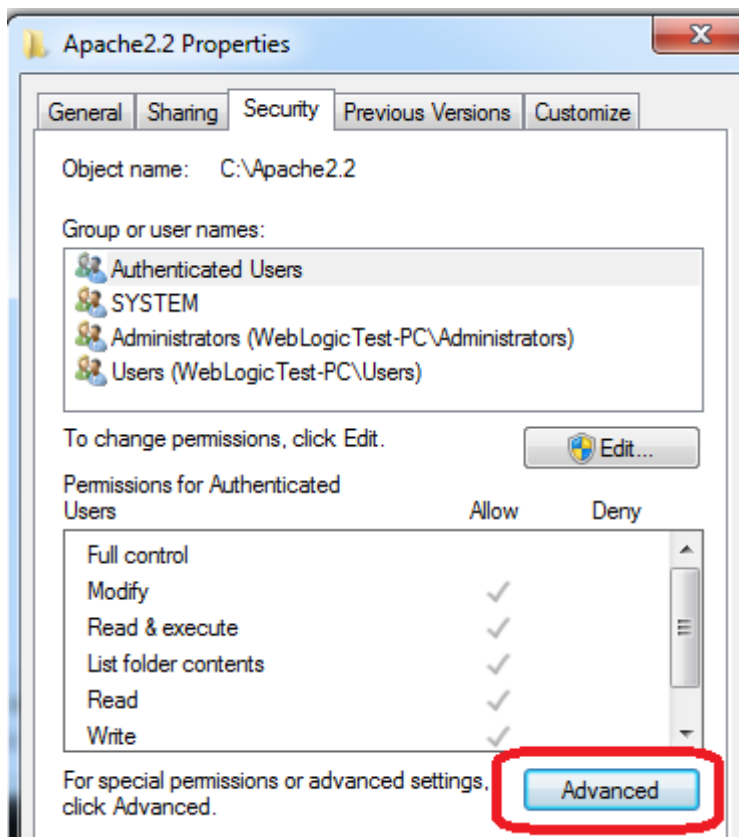
Note: If installing on Windows Vista, Windows 7, Windows Server 2008, or Windows 8 perform this section. Failure to follow these additional steps will lead to an unusable installation. These steps allow full access to the directories used by the Apache Web Server install. This is required so that students can write to the document root.

__1. Open Windows Explorer.

__2. Right click C:\Apache2.2 and select **Properties**.

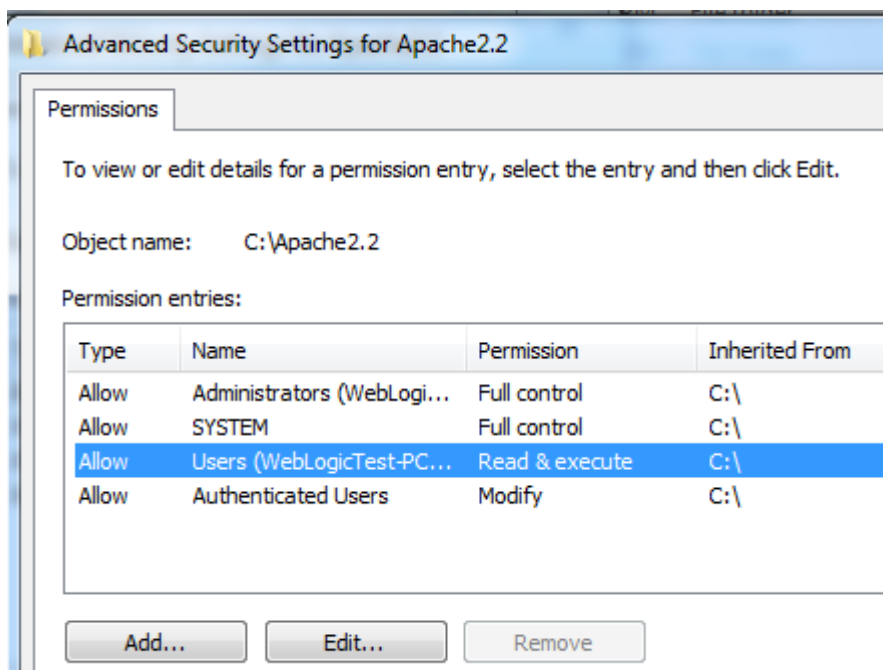
__3. Click the **Security** tab.

__4. Click **Advanced**.



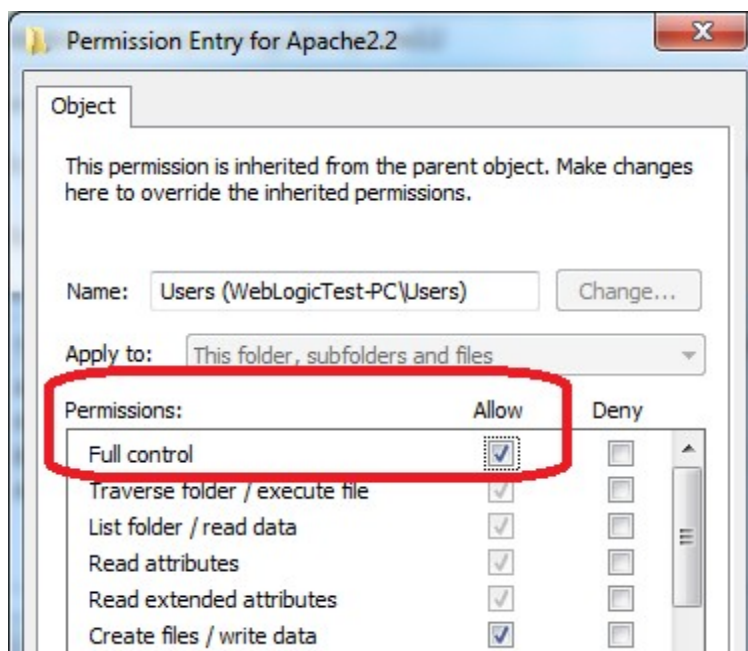
__5. Click **Change Permissions**.

__6. Select the **Users** entry (**add one if not present**).

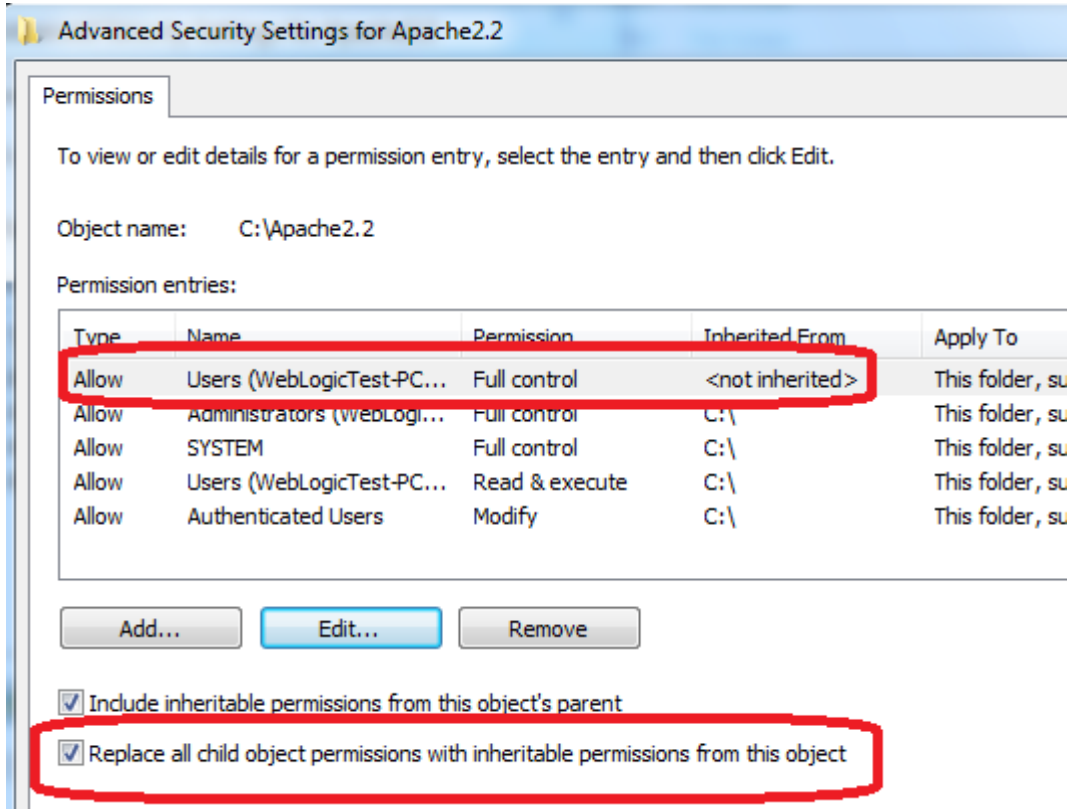


__7. Click **Edit...**

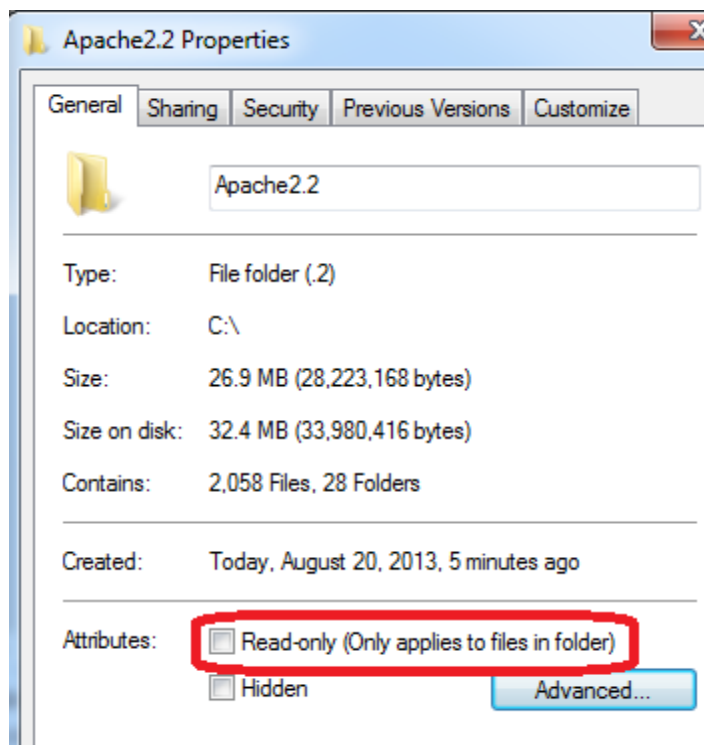
__8. Check the **Allow** checkbox to the right of **Full Control** and click **OK**.



__9. Select the checkbox for **Replace all child permissions with inheritable permissions from this objects** and then click **OK**.

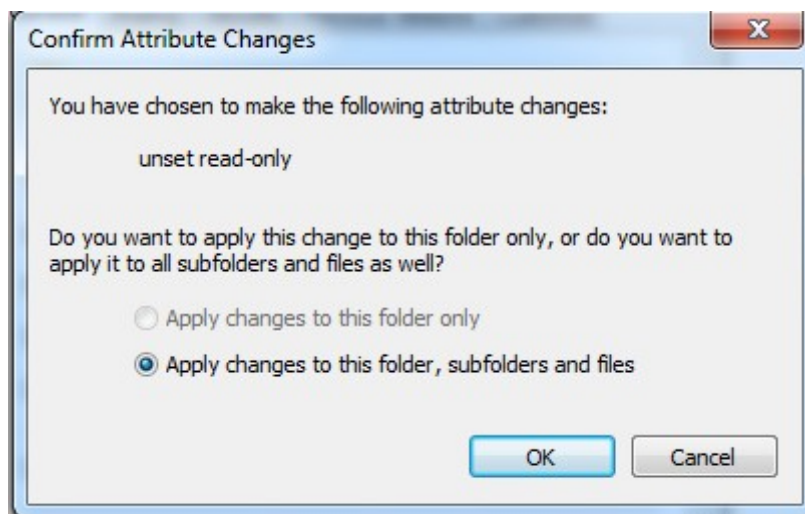


- __10. Click **OK** to continue.
- __11. A *Windows Security* dialog will open. Click **Yes**.
- __12. Wait until Windows finishes updating security.
- __13. Back in the *Advanced Security Settings* dialog, click **OK**.
- __14. Back in the *Apache2.2 Properties* dialog, click **OK**.
- __15. Right click C:**Apache2.2** and select **Properties**.
- __16. Uncheck the **Read-only** checkbox so files can be written to the directory.



__17. Click **OK**.

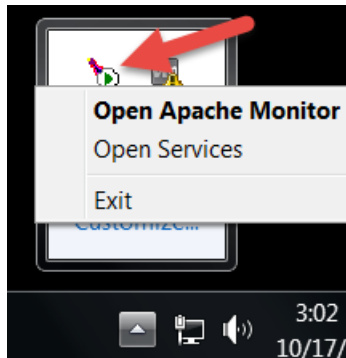
__18. In the *Confirm Attribute Changes* dialog, click **OK**, so the change will be applied to this folder, subfolder, and any files.



__19. Restart the computer and log in with the user that the student will use to do the labs.

__20. Make sure the user has full access to the **C:\Apache2.2\conf** and **C:\Apache2.2\htdocs** folders.

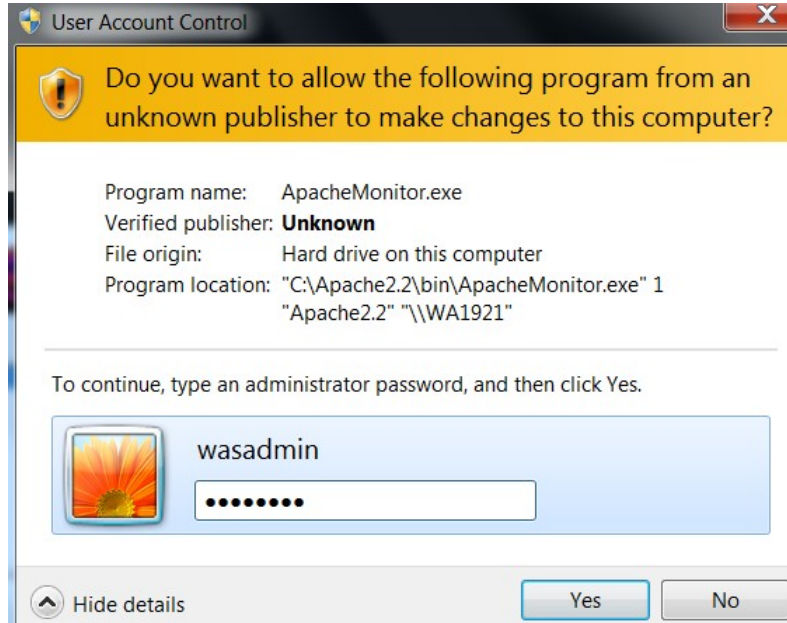
__21. Right click the task bar and select **Open Apache Monitor**.



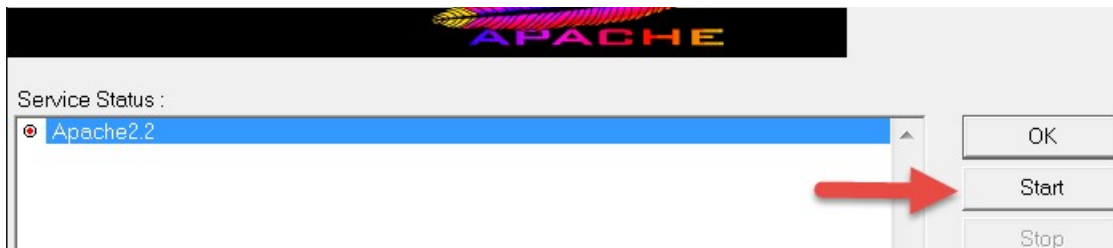
__22. The **Open Apache Monitor** window will open then click **Stop**.



__23. Enter the admin password if it is required and click **Yes**.



__24. The server will stop, click **Start**.



The server will be started again.



Note. If you were asking for password to stop the server means that you need to configure the user to allow the student starting the server without asking permissions or you need to provide the admin password to the student to be able to stop and restart the server because this is required during the labs.

Congratulations. The installation for this course has been completed.