

WA2235 Apache Maven Quick Start

Classroom Setup Guide

Web Age Solutions Inc.

Table of Contents

| | |
|---|----|
| Part 1 - Minimum Hardware Requirements | 3 |
| Part 2 - Minimum Software Requirements | 3 |
| Part 3 - Software Provided..... | 4 |
| Part 4 - Instructions..... | 4 |
| Part 5 - Installing JDK 7 Update 45..... | 5 |
| Part 6 - Verification of JDK 7 Update 45..... | 9 |
| Part 7 - Install Maven..... | 11 |
| Part 8 - Setup Maven in Eclipse..... | 12 |
| Part 9 - Privileges to Users..... | 14 |
| Part 10 - Summary..... | 16 |

Part 1 - Minimum Hardware Requirements

- 2 GB RAM minimum, 3 GB recommended
- 15 GB in the hard disk
- Access to internet

Part 2 - Minimum Software Requirements

- One of the following Windows versions:
 - Windows Vista (Professional, Enterprise, or Ultimate)
 - Windows 7 (Professional, Enterprise, or Ultimate)
- One of the following web browsers:
 - Internet Explorer 8 or above
 - Firefox
- Adobe Acrobat Reader
- Zip extraction utility
- JDK 7 Update 45 *
- Eclipse JEE Kepler SR1*
- Artifactory 3.3.0 OSS *
- Apache Maven 3.1.1 *
- Apache Tomcat 6.0.37 *

* - indicates software provided as part of the courseware.

Part 3 - Software Provided

Name of the file you will receive:

- **WA2184.ZIP**

All other software listed under Minimum Software Requirements is either commercially licensed software that you must provide or software that is freely available off the Internet.

Part 4 - Instructions

__1. Extract **ZIP** file directly to C:\

__2. Review that the following folders were created:

- **C:\LabFiles**
- **C:\Software\apache-maven-3.1.1**
- **C:\Software\apache-tomcat-6.0.37**
- **C:\Software\eclipse**
- **C:\Software\artifactory-3.3.0**

__3. Review that the following files were created:

- **C:\Software\jdk-7u45-windows-i586.exe**

Part 5 - Installing JDK 7 Update 45

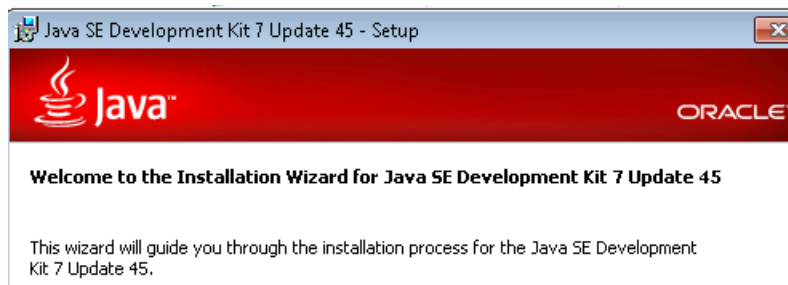
__1. Make sure there is no previous Java version already installed on the system. You can check this by using the Windows “Add/Remove Programs” utility. For the best compatibility with the labs it is suggested that all previous versions of Java be uninstalled before proceeding with these instructions. If this is an issue, please contact the setup support person for the course.

__2. From the **C:\Software** directory run the following file:

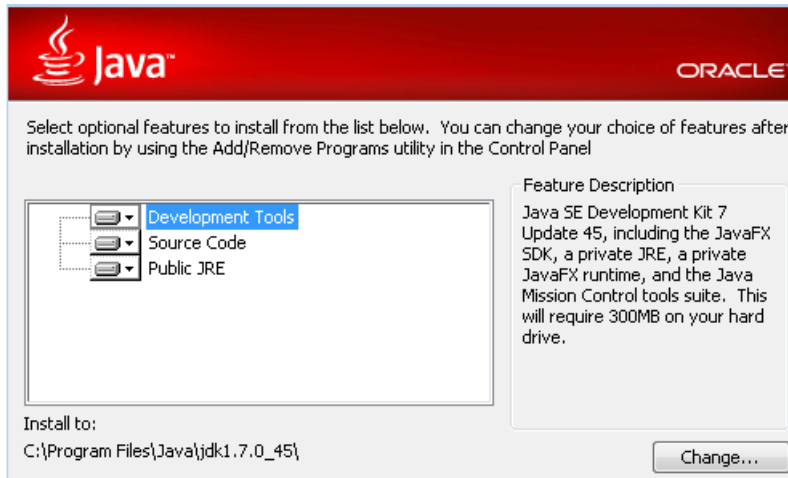
`jdk-7u45-windows-i586.exe`

Note: If using prompted by a security prompt allow the installation to continue.

__3. When the initial step of the setup appears, press the **Next** button.



__4. Leave the defaults for installation location and options, and press the **Next** button.



Note: The installation directory may be slightly different for example `C:\Program Files (x86)\Java\jdk1.7.0_45`

The installation will begin installing files.



__5. The Destination Folder will appear, leave the default folder and click **Next**.



Note: The installation directory may be slightly different for example
C:\Program Files (x86)\Java\jdk1.7.0_45

Wait until the software is completely installed.

__6. Click **Close**.



__7. Close any browser that appears asking to register the JDK software.

Set the Environment variables.

__1. Open a Command Prompt. You can do this with '**Start → Programs → Accessories → Command Prompt**'.

__2. Use the 'cd' command to attempt to switch to the following directory. This will verify the presence of a directory used later so make sure you do not get any errors about not being able to “find the path specified”.

```
cd C:\Progra~1\Java\jdk1.7.0_45
```

```
C:\Users\wasadmin>cd C:\Progra~1\Java\jdk1.7.0_45
C:\PROGRA~1\Java\jdk1.7.0_45>_
```

Note: The installation directory may be slightly different depending your operating system. You may need to use the following directory instead of the one listed above:

C:\Progra~2\Java\jdk1.7.0_45

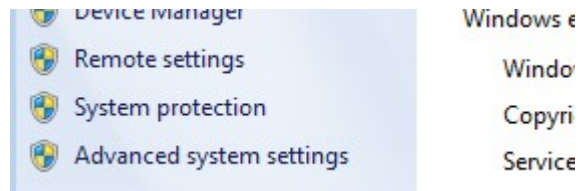
Some of the remaining steps will use the slightly different directory.

__3. Make sure you can reach the java folder and remember the value entered because you will use this value in the following steps.

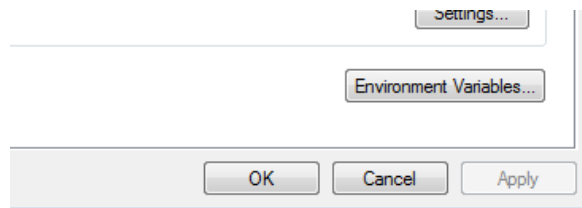
__4. Close the command prompt window.

__5. In the Windows Start Menu, right-click on the **Computer** link in the right-hand side of the Start panel, and then select **Properties**.

__6. Click on **Advanced system settings**.



__7. The system will display the **System Properties** dialog. Select the **Advanced** tab and click **Environment Variables**.

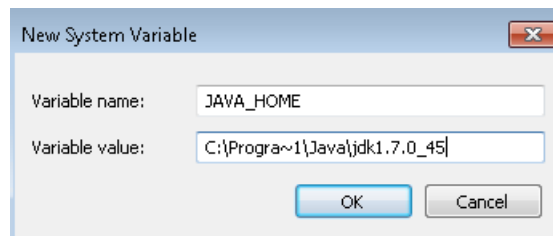


__8. Under the **System Variables** list, click the **New** button.

__9. Enter **JAVA_HOME** as Variable name.

__10. As Variable value enter the following. This should be the value you verified in the *Set the Environment variables section - step 2*.

C:\Progra~1\Java\jdk1.7.0_45



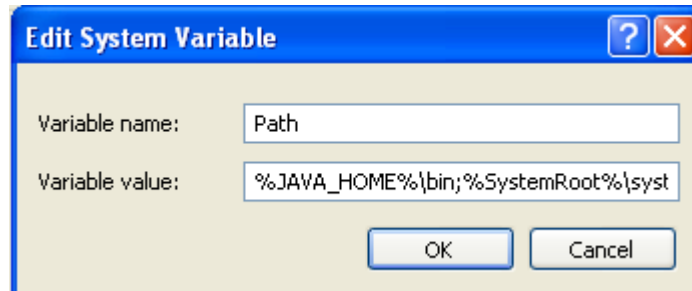
Note: If you are using a 64-bit OS you may have to use **C:\Progra~2\Java\jdk1.7.0_45**

__11. Click **OK** to create the variable.

__12. From the *System Variables* list, select **Path** and click **Edit**.

__13. At the beginning of the line enter the following. Make sure to include the semi-colon on the end:

%JAVA_HOME%\bin;



__14. Click **OK**.

__15. Click **OK** to close the *Environment Variables* window.

__16. Click **OK** to close the *System Properties* window.

Part 6 - Verification of JDK 7 Update 45

__1. Open a Windows command prompt. You can do this by selecting '**Start -> Run**', entering '**cmd**', and then pressing the **OK** button. Make sure it is a new command prompt and not one open previously.

__2. Enter the following command:

```
echo %PATH%
```

Make sure you see the Java 'bin' directory listed at the beginning as shown below.

```
C:\Users\wasadmin>echo %PATH%
C:\Progra~1\Java\jdk1.7.0_45\bin;C:\Windows\system32;C:\W
m32\Wbem;C:\Windows\System32\WindowsPowerShell\v1.0\
C:\Users\wasadmin>_
```

Note: You may see **C:\Progra~2\Java\jdk1.7.0_45**

__3. Enter the following command:

```
java -version
```

Make sure you see the response shown below.

```
C:\Users\wasadmin>java -version
java version "1.7.0_45"
Java(TM) SE Runtime Environment (build 1.7.0_45-b18)
Java HotSpot(TM) Client VM (build 24.45-b08, mixed mode, sharing)
```

Troubleshooting: If you get an error message means that your Environment variable was incorrectly entered, go back and fix the values.

__4. Enter the following command:

javac

Verify that you get the options to run the Java compiler:

```
C:\Users\wasadmin>javac
Usage: javac <options> <source files>
where possible options include:
-g          Generate all debugging info
-g:none    Generate no debugging info
-g:{lines,vars,source} Generate only some debugging info
-nowarn    Generate no warnings
-verbose   Output messages about what the compiler is doing
```

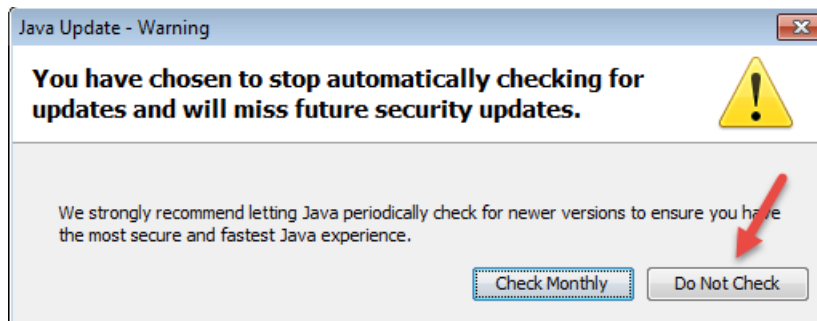
__5. Close the command prompt window and any extra windows that are open.

__6. From Start, select **All Programs > Java > Check for Updates**.

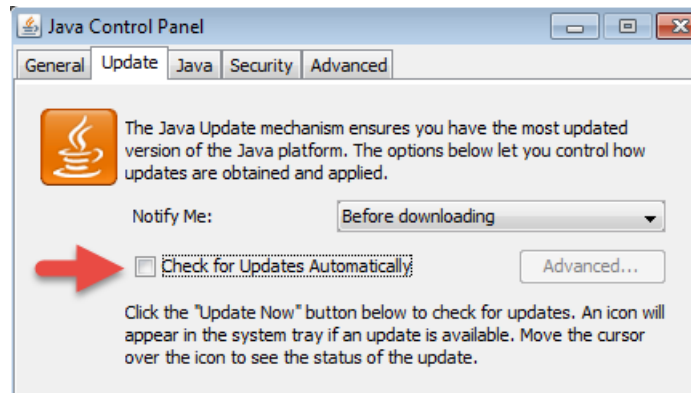
__7. Select the **Update** tab.

__8. Un-check the **Check for updates automatically** check box.

__9. A popup will open, click **Do not check**.



__10. Make sure the box is not checked and click **OK**.

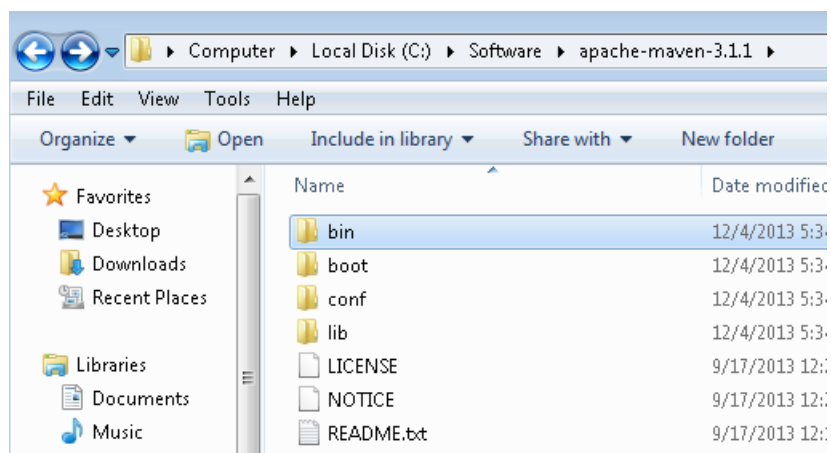


__11. Click **OK** to close the Java Control Panel.

Java has been installed.

Part 7 - Install Maven

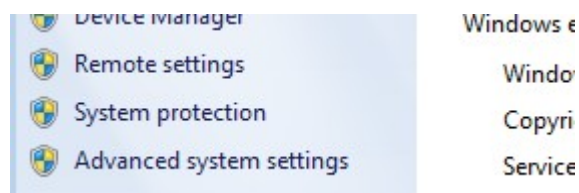
__1. Open a file explorer and navigate to **C:\Software\apache-maven-3.1.1**



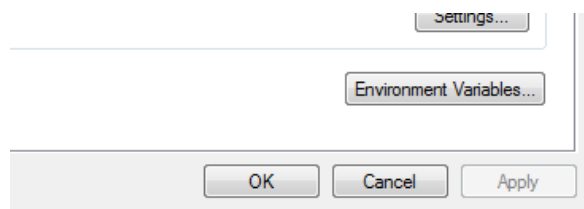
The following steps are based on Windows 7, other Windows versions instructions may vary.

__2. In the Windows Start Menu, right-click on the **Computer** link in the right-hand side of the Start panel, and then select **Properties**.

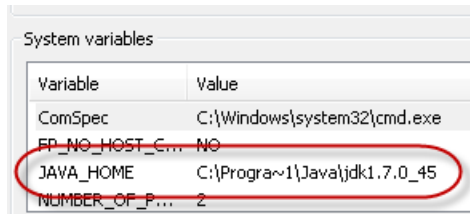
__3. Click on **Advanced system settings**.



__4. The system will display the **System Properties** dialog. Select the **Advanced** tab and click **Environment Variables**.



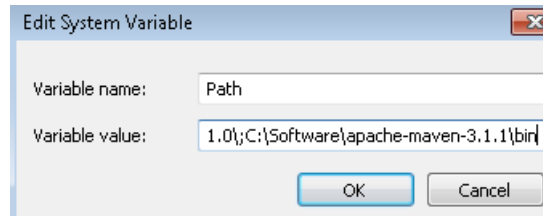
__5. Verify the JAVA_HOME variable is set to C:\Progra~1\Java\jdk1.7.0_45 or similar path.



__6. In the 'System Variables' panel, locate the entry for 'Path' and double-click on it.

__7. Add the following to the **end** of the **Variable Value** field (including the semi-colon)

;C:\Software\apache-maven-3.1.1\bin



__8. Click **OK** on the variable editor dialog.

__9. Click **OK** on the **Environment Variables** dialog.

__10. Click **OK** in the **System Properties** dialog.

__11. Open a command prompt window (in the start menu, click **All Programs --> Accessories --> DOS Prompt**).

__12. In the command window, type:

```
mvn -version
```

__13. You should see output similar to:

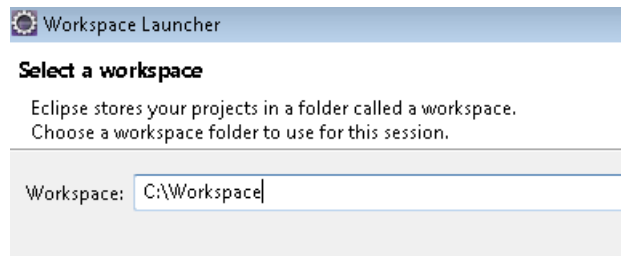
```
C:\Users\wasadmin>mvn -version
Apache Maven 3.1.1 (0728685237757ffbf44136acec0402957f723d9a; 2013-09-17 11:22:22-0400)
Maven home: C:\Software\apache-maven-3.1.1\bin\..
Java version: 1.7.0_45, vendor: Oracle Corporation
Java home: C:\Progra~1\Java\jdk1.7.0_45\jre
Default locale: en_US, platform encoding: Cp1252
OS name: "windows 7", version: "6.1", arch: "x86", family: "windows"
```

Part 8 - Setup Maven in Eclipse

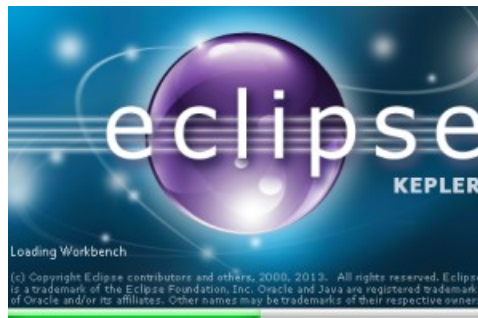
__1. Use Windows Explorer to navigate to **C:\Software\eclipse**, and then double-click on '**eclipse.exe**' to start up the IDE.

__2. You may see a security dialog. If so, un-check the box for “Always ask before opening this file” and then click **Run**.

__3. Change the workspace to **C:\Workspace** and click **OK**.



__4. Eclipse Kepler will start launching.

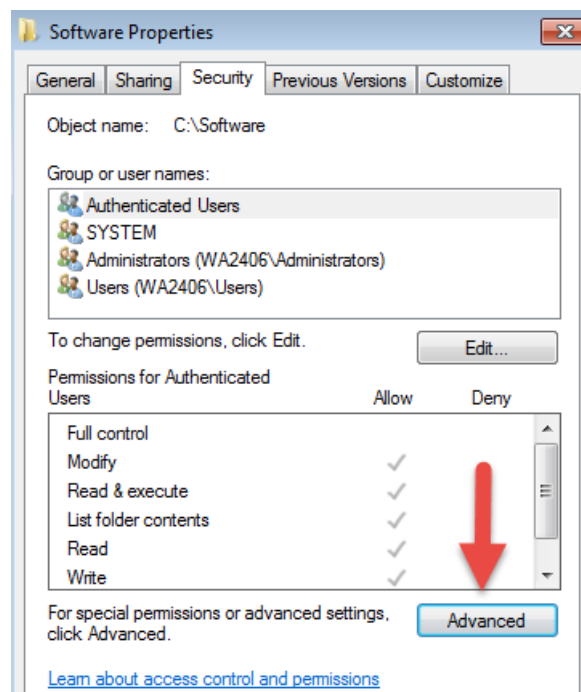


__5. Close Eclipse.

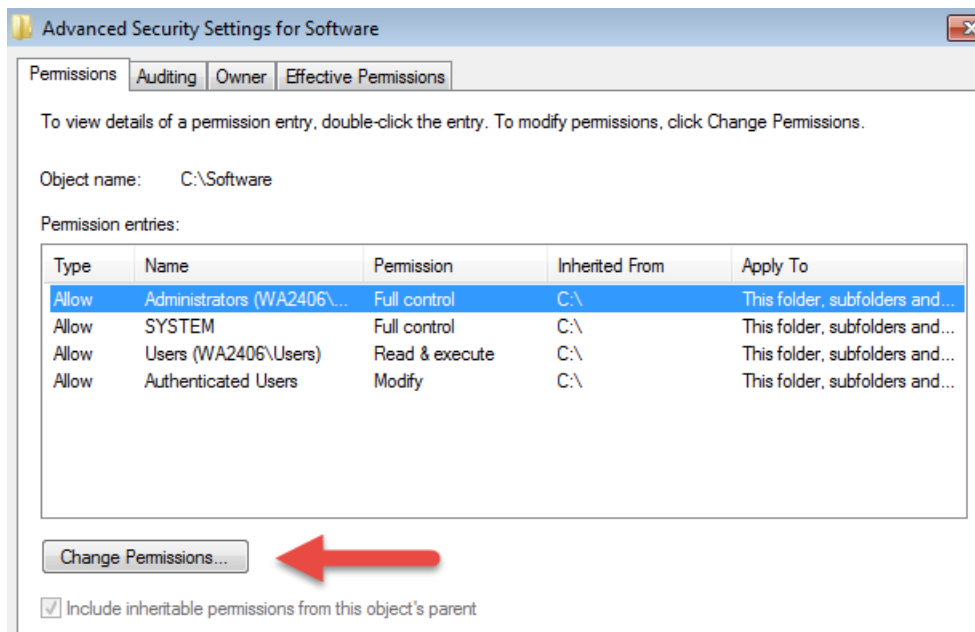
__6. Close all.

Part 9 - Privileges to Users

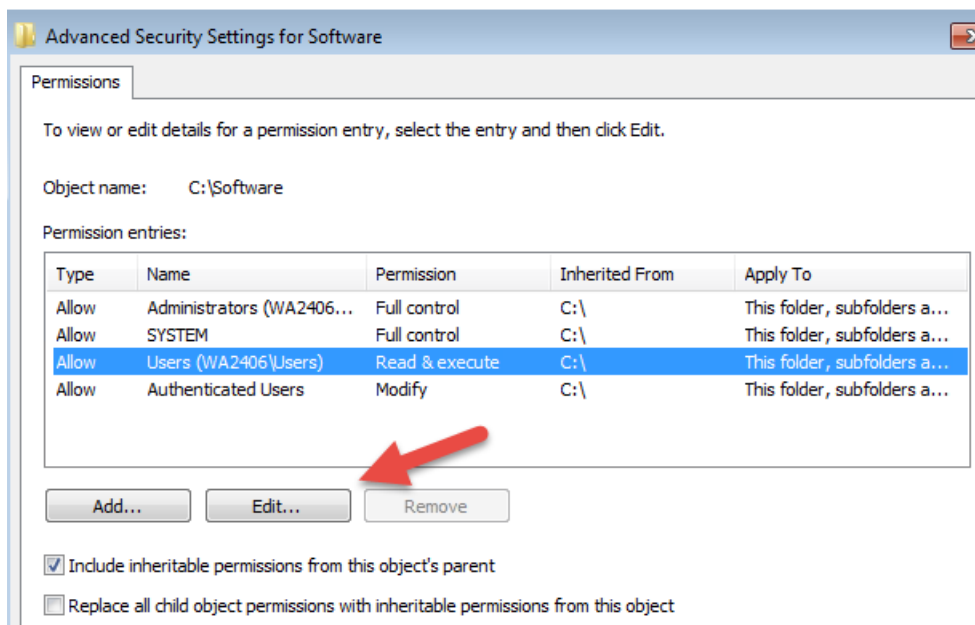
- __1. Create the user that the students will use during the class.
- __2. Open Windows Explorer.
- __3. Right click C:**Software** and select **Properties**.
- __4. Click the **Security** tab.
- __5. Click **Advanced**.



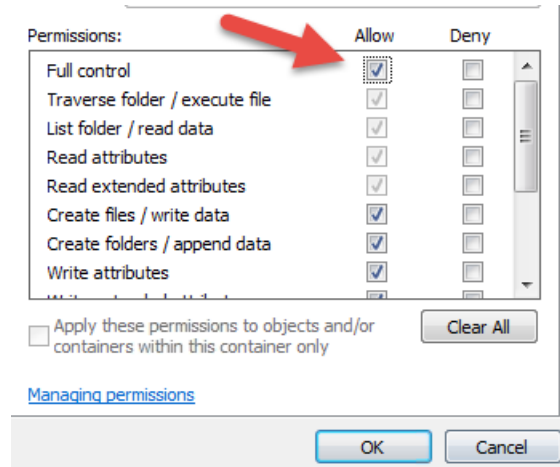
- __6. Click **Change Permissions**.



__7. Select the **Users** entry (add one if not present) and click **Edit...**



__8. Check the **Allow** checkbox to the right of **Full Control** and click **OK**.



__9. Select the checkbox for **Replace all child permissions with inheritable permissions from this objects** and then click **OK**.



- Include inheritable permissions from this object's parent
- Replace all child object permissions with inheritable permissions from this object

__10. A *Windows Security* dialog will open. Click **Yes**.

__11. Wait until Windows finishes updating security.

__12. Back in the *Advanced Security Settings* dialog, click **OK**.

__13. Back in the *Properties* dialog, click **OK**.

__14. Do the same steps to the **C:\LabFiles** folder.

__15. Create a folder called **C:\Workspace** if its not already created.

__16. Do the same steps to the **C:\Workspace** folder.

Part 10 - Summary

You have successfully installed the software for this course!

WA2235 Apache Maven Quick Start - Classroom Setup Guide

If you have any question please contact us by email at support@webagesolutions.com

From US and Canada call: 1-877-812-8887 ext. 26

International call: 416-406-3994 ext. 26