

WA2089 WebSphere Portal 8.0 Programming

Classroom Setup Guide

Web Age Solutions Inc.

Table of Contents

Part 1 - Minimum Hardware Requirements	3
Part 2 - Minimum Software Requirements	3
Part 3 - Software Provided.....	4
Part 4 - Important Ghosting or Imaging Information.....	5
Part 5 - Preparation.....	5
Part 6 - Installing Java SE 6 JRE Update 26.....	5
Part 7 - Installing AnyClient File Transfer Application.....	7
Part 8 - Installing Rational Application Developer v8.5 Trial (RAD 8.5.0) with WebSphere Portal 8.0.....	9
Part 9 - Verification of WebSphere Portal 8.0 installation.....	26
Part 10 - Installing Rational Application Developer v8.5 Trial (RAD 8.5.0).....	28
Part 11 - Verification of Rational Application Developer v8.5 Trial (RAD 8.5.0) installation.....	34
Part 12 - Modify File Permissions.....	36

Part 1 - Minimum Hardware Requirements

- Pentium 4 - 2.0GHz or higher
- 2.5 GB RAM minimum, 4 GB recommended.
- 30GB free hard disk space (preferably in C: drive).

Part 2 - Minimum Software Requirements

- One of the following Windows platforms:
 - Windows Vista Professional, Enterprise, or Ultimate editions
 - Windows 7 Professional, Enterprise, or Ultimate editions
 - Windows Server 2008 Standard Edition or Enterprise Edition
- Adobe Acrobat Reader
- Zip extraction utility
- BOTH of the following web browsers are required for the class
 - Internet Explorer 7+ (with latest fixes applied)
 - Firefox 3.5+
- AnyClient File Transfer client *
- IBM Rational Application Developer v8.5.0 Trial *
- IBM WebSphere Portal Server 8.0 *

* - indicates software provided as part of the courseware.

Part 3 - Software Provided

You will receive the following files:

- WA2089_1.ZIP
- WA2089_2.ZIP
- WA2089_3.ZIP
- WA2089_4.ZIP

All other software listed under Minimum Software Requirements is either commercially licensed software that you must provide or software that is freely available off the Internet.

Part 4 - Important Ghosting or Imaging Information

Some of the software installed for this course will not function after changing the computer hostname. As such, cloning or imaging should not be used on a fully installed system.

You can save time by extracting the contents of the USB memory stick to C:\ on a clean OS install (no other software installed) and then imaging that hard drive. After restoring the image to the other computers and changing the hostnames, you can then install the software on each computer individually by following the instructions that are detailed later in this document.

Part 5 - Preparation

- __1. Login as an account that has administrative privileges.
- __2. If possible, disable all firewall notifications to speed up installation.
- __3. **Extract the 4 zips directly to C:**
- __4. Review that the following folders were created:
 - C:\LabFiles
 - C:\Software\AnyClient
 - C:\Software\RAD
 - C:\Software\RAD_SETUP
 - C:\Software\WebSpherePortal8.0

Part 6 - Installing Java SE 6 JRE Update 26

- __1. From the C:\Software directory run the following file:

jre-6u26-windows-i586.exe

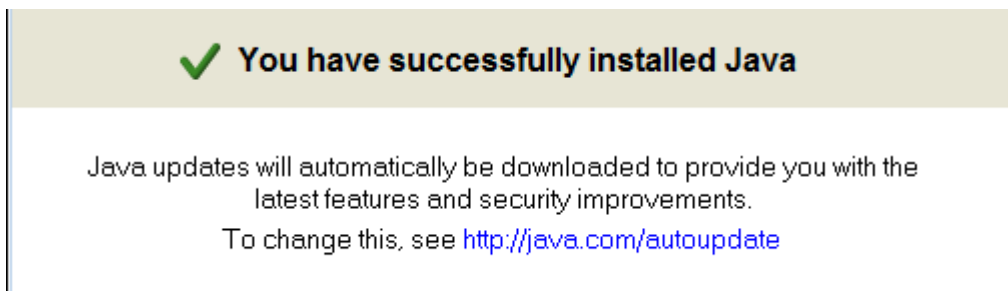
Note: If using prompted by a security prompt allow the installation to continue.

__2. After a few moments the installation screen will appear. Press the **Install** button to begin the installation.



__3. Wait while the software installs.

__4. Make sure you get a success message and click the **Close** button.



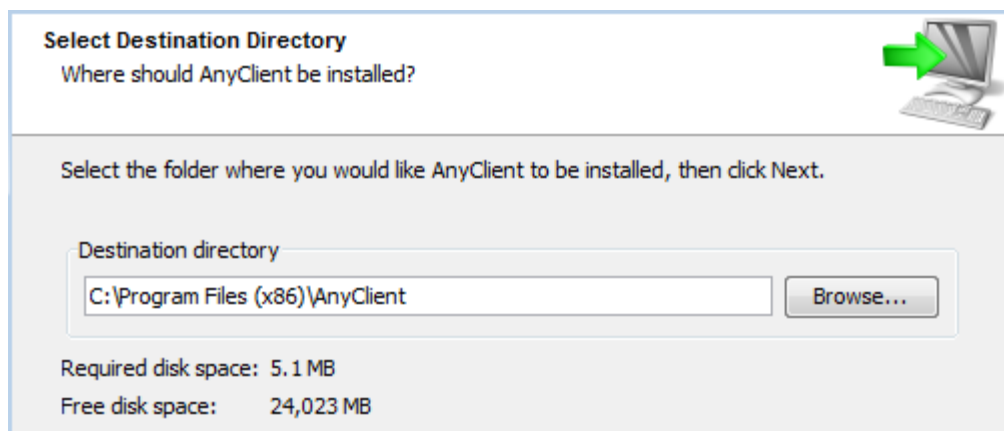
Part 7 - Installing AnyClient File Transfer Application

- __1. Login as an administrative user if not already.
- __2. Make sure that a Java environment has previously been installed as part of the class setup.
- __3. From the **C:\Software\AnyClient** directory run the following file:

install.exe

Note: If using prompted by a security prompt allow the installation to continue.

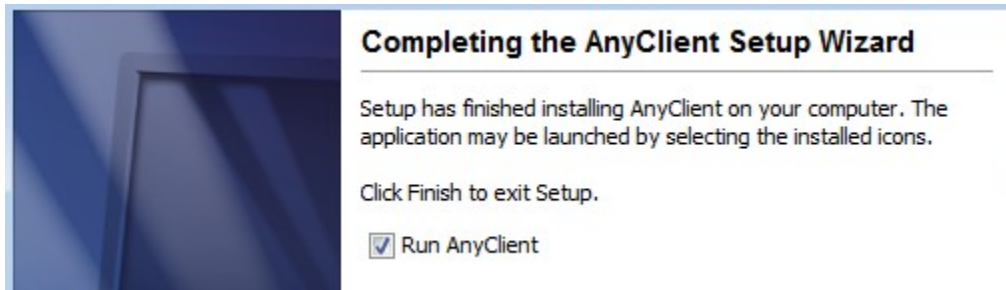
- __4. On the welcome page click the **Next** button.
- __5. After a few moments the license agreement will appear. Accept the license and click the **Next** button.
- __6. Leave the defaults for installation location and options, and press the **Next** button. Your destination directory may be slightly different depending in the version of Windows being used.



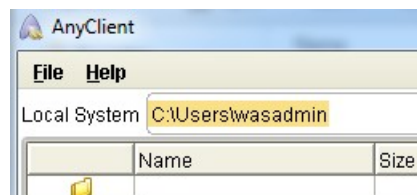
- __7. Accept the defaults for creating a Start Menu shortcut and click the **Next** button.
 - __8. Accept the default for creating a desktop icon and click the **Next** button.
- Wait until the software is completely installed.
- __9. Change to Never check for updates and click **Next**.



__10. Click **Finish**. This should automatically start the AnyClient program. Accept any security prompts if they appear when starting the program.



__11. Once you know the software starts select **File** → **Exit** to exit the AnyClient program.



AnyClient is now installed!

Part 8 - Installing Rational Application Developer v8.5 Trial (RAD 8.5.0) with WebSphere Portal 8.0

Installing RAD 8.5.0 with Portal 8.0 involves two basic steps: installing RAD 8.5.0 itself and then installing Portal 8.0. This document will outline all these steps.

Average time for installation of RAD 8.5.0 Trial with WebSphere Portal 8.0: 2 hours.

Note: If installing on Windows Vista, Windows 7, or Windows Server 2008 there will be several notes about special steps required on these platforms. Failure to include these additional steps will lead to an unusable installation.

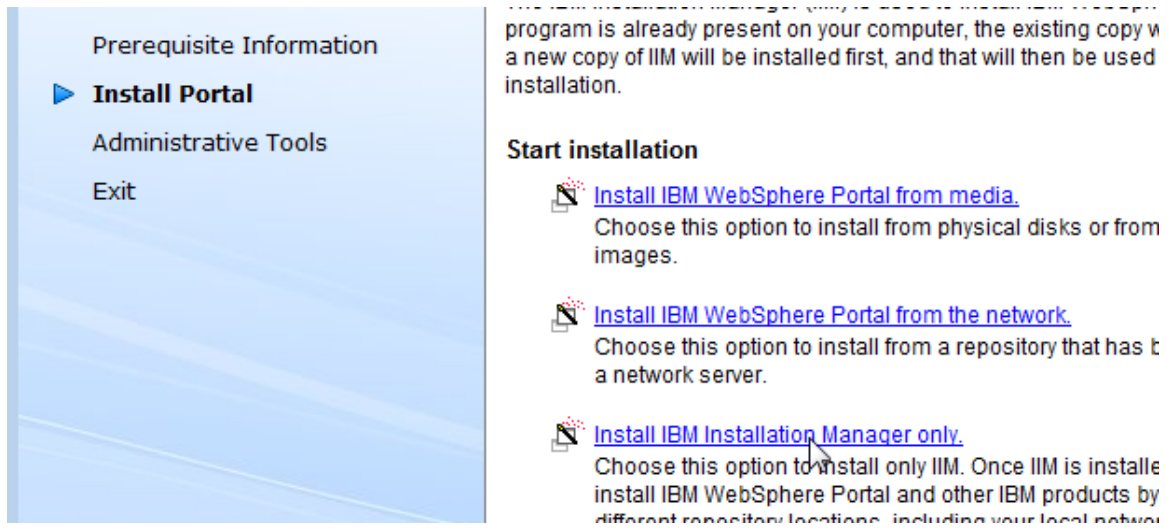
__1. Before you begin, shut down any running applications. The installation process is quite CPU/disk intensive.

__2. Make sure you are logged in as an account with administrative privileges. It is also suggested to turn off all Windows Firewall notifications as this will help to speed up the installation.

__3. From **C:\Software\WebSpherePortal8.0\Setup**, run **setup.exe** and allow any security prompts that appear. The installer will begin.

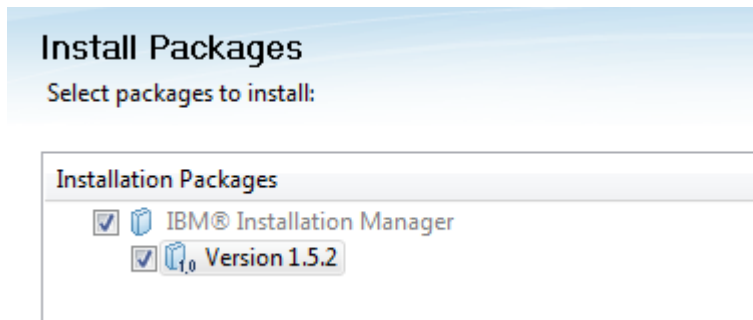
Note: Don't run the '**setup64.exe**' application even if you are on a 64-bit machine.

__4. Click **Install Portal** on the left and then the '**Install IBM Installation Manager only**' on the right.



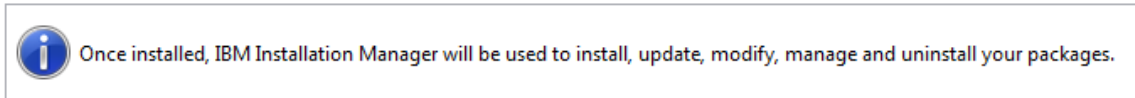
A new program – the **IBM Installation Manager** will launch. You will then be prompted to *Install Packages*.

__5. Make sure that version **1.5.2** of the '**IBM Installation Manager**' program is selected and click the **Next** button.



__6. Accept the terms of the license agreement and click the **Next** button.

__7. Leave the default *Installation Manager Directory* and click **Next**.



Installation Manager Directory: C:\Program Files (x86)\IBM\Installation Manager\eclipse

Note: Your default installation directory may vary slightly.

__8. On the *Summary* screen click the **Install** button to start the installation.


Install Packages

Review the summary information.

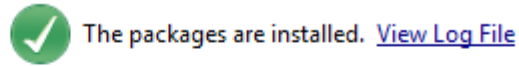
Install Licenses Location Summary

Target Location
Package Group Name: IBM Installation Manager
Installation Directory: C:\Program Files (x86)\IBM\Installation Manager\eclipse

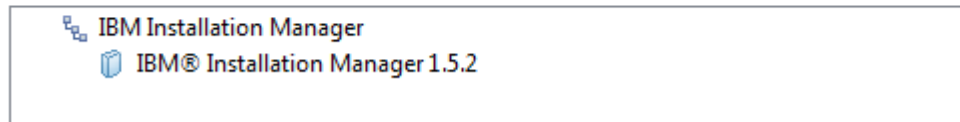
Packages

Packages
 IBM® Installation Manager 1.5.2

The *Installation Manager* will install. Eventually, it will complete.



The following package was installed:

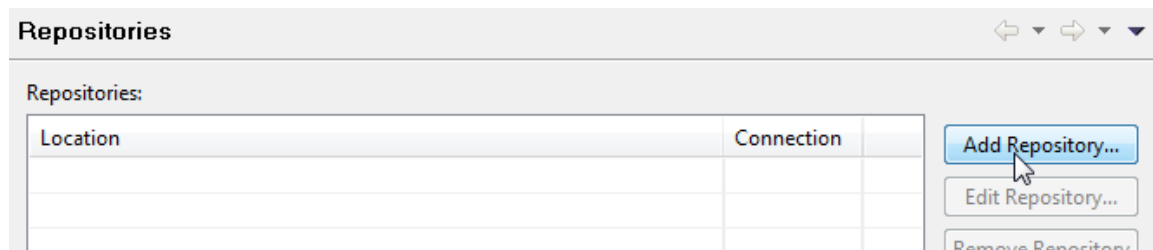


__9. Click **Restart Installation Manager**.

The **Installation Manager** will re-launch. You may need to switch between windows.

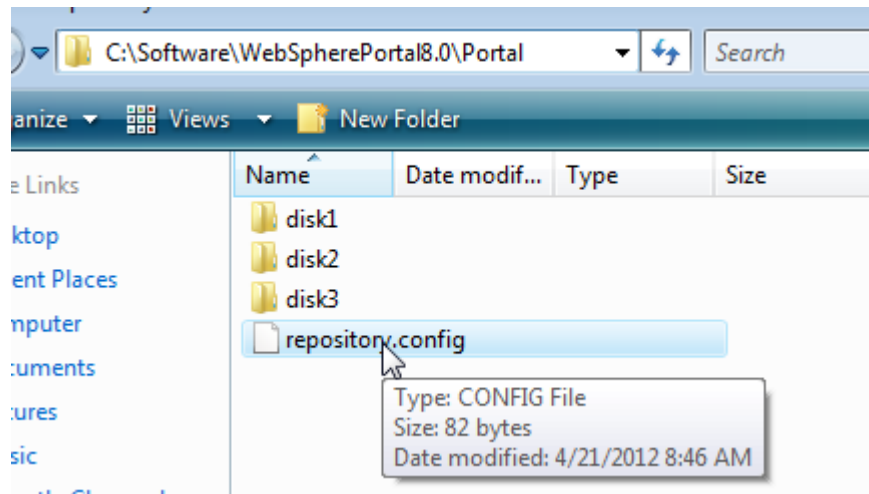
__10. From the Installation Manager window that appears select '**File** → **Preferences**'.

__11. Next to the list of repositories click the '**Add Repository**' button.

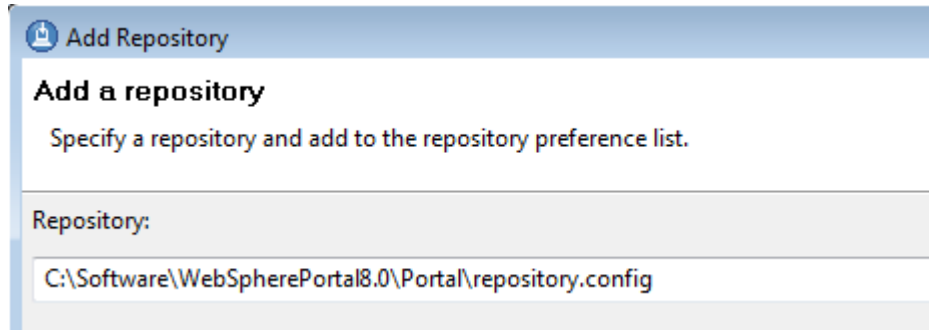


__12. Click the **Browse** button and navigate to the **C:\Software\WebSpherePortal8.0\Portal** directory.

__13. Select the '**repository.config**' file in this location as shown below and click the **Open** button to select the file.



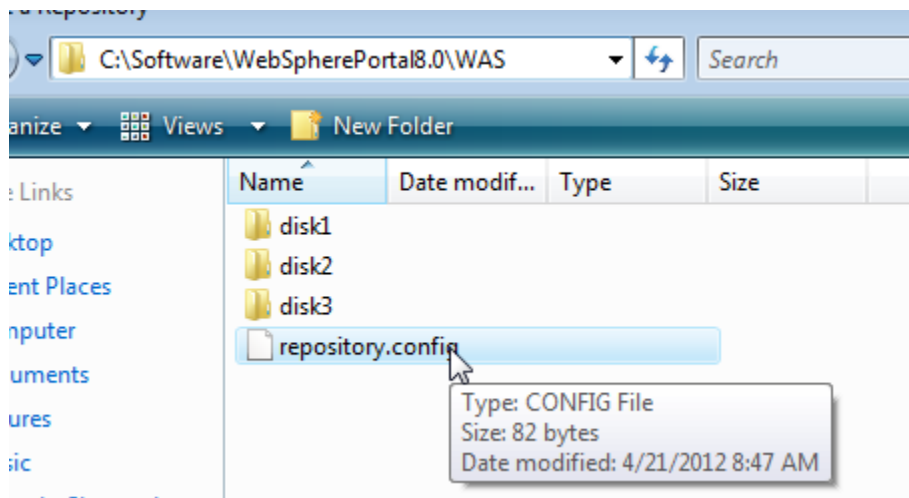
__14. Back in the Installation Manager, make sure the proper location for the repository configuration file is listed and click the **OK** button.



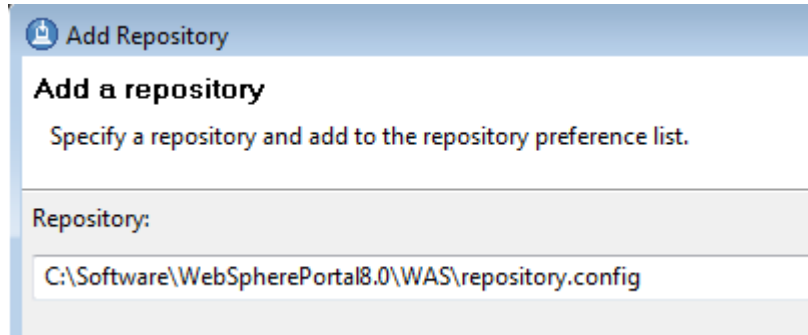
__15. Next to the list of repositories click the '**Add Repository**' button again.

__16. Click the **Browse** button and navigate to the **C:\Software\WebSpherePortal8.0\WAS** directory.

__17. Select the '**repository.config**' file in this location as shown below and click the **Open** button to select the file.



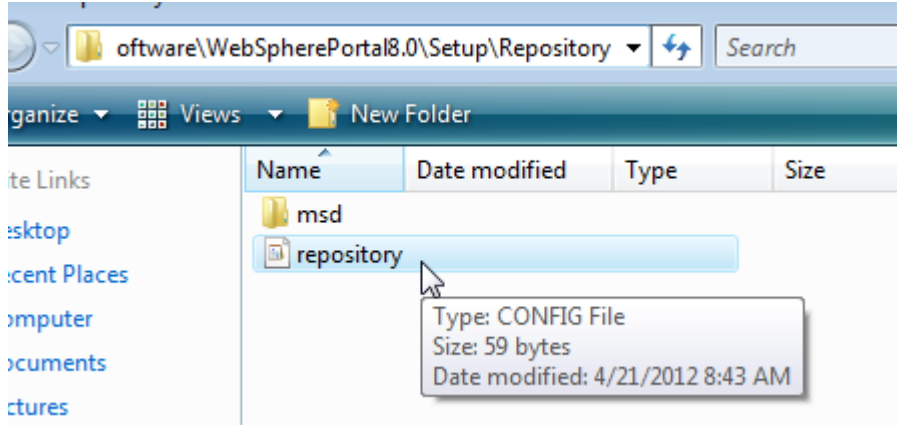
__18. Back in the Installation Manager, make sure the proper location for the repository configuration file is listed and click the **OK** button.



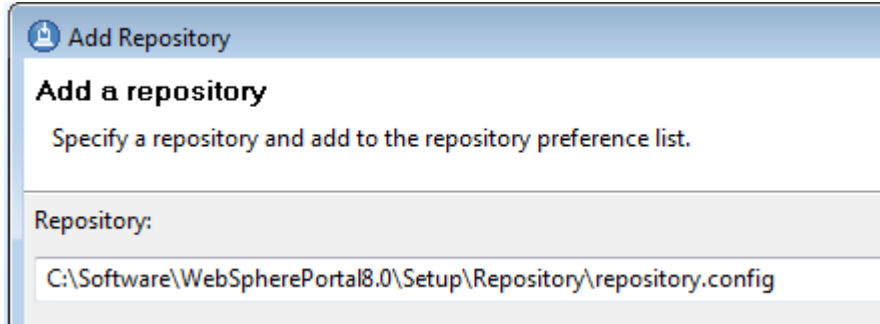
__19. Next to the list of repositories click the '**Add Repository**' button again.

__20. Click the **Browse** button and navigate to the **C:\Software\WebSpherePortal8.0\Setup\Repository** directory.

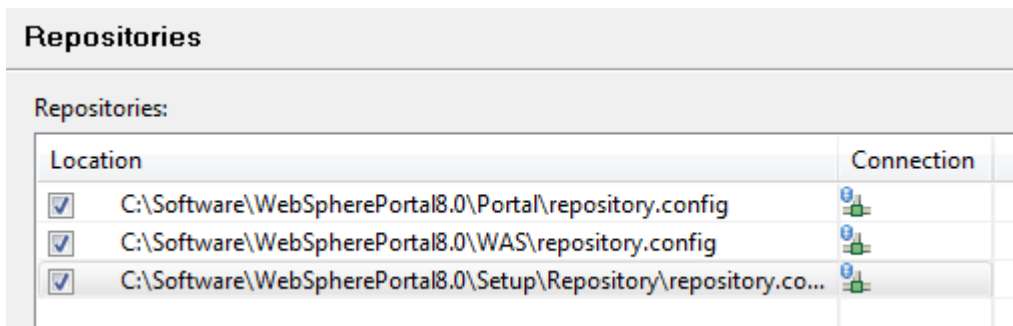
__21. Select the '**repository.config**' file in this location as shown below and click the **Open** button to select the file.



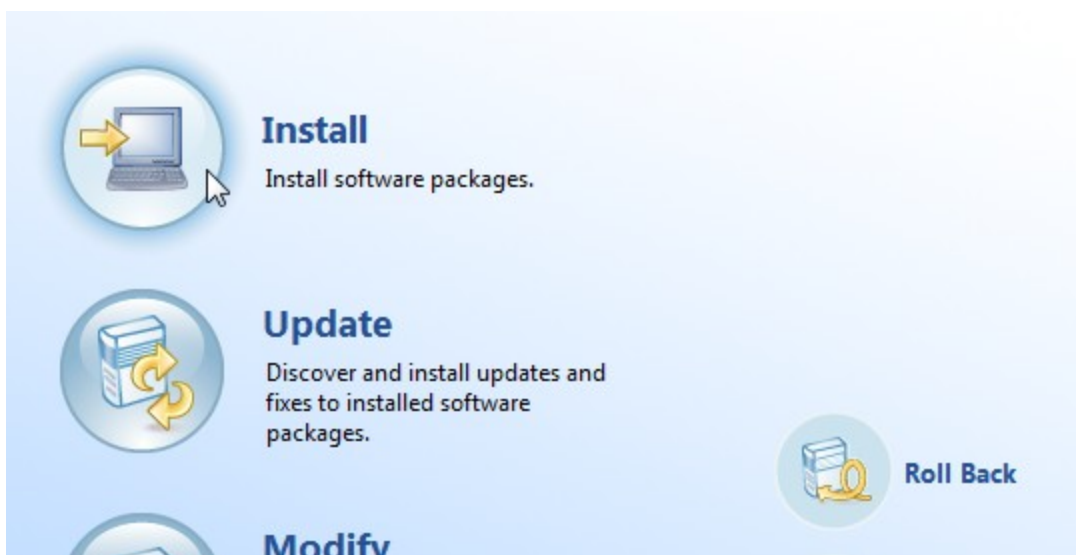
__22. Back in the Installation Manager, make sure the proper location for the repository configuration file is listed and click the **OK** button.



__23. Make sure all three repositories are listed and click the **OK** button to close the preferences.

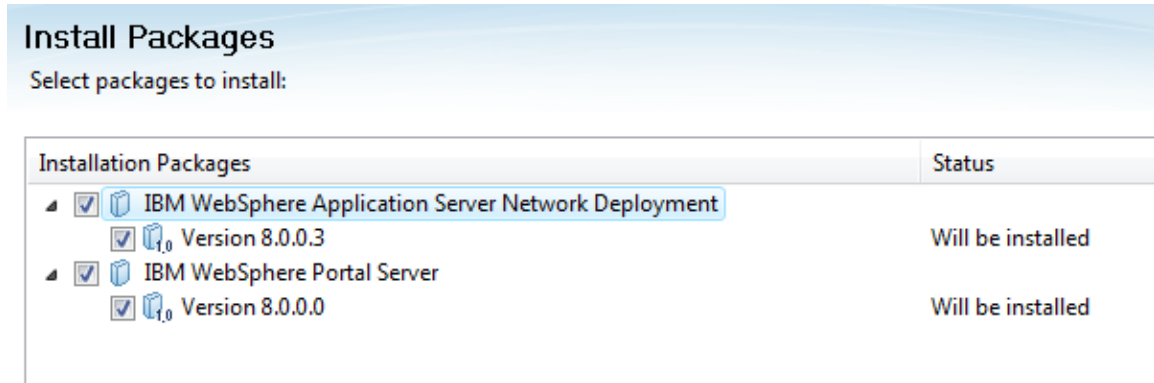


__24. From the main Installation Manager screen, click **Install**.

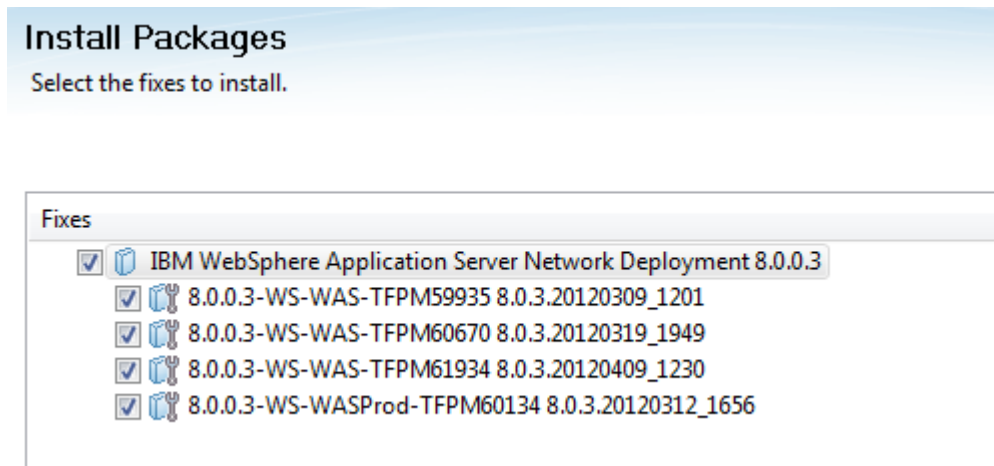


The *Install Packages* screen will appear.

__25. Select the packages **IBM WebSphere Application Server Network Deployment** and **IBM WebSphere Portal Server** and click the **Next** button.



__26. Check the box for **IBM WebSphere Application Server Network Deployment 8.0.0.3** which will deploy all of the required fixes for WebSphere Portal and click the **Next** button.



Note: If you get a warning about the operating system support you can ignore it and click the **Next** button.

The screenshot shows a multi-step installation wizard with tabs for 'Install', 'Prerequisite', 'Licenses', 'Location', 'Features', and 'Summary'. The 'Prerequisite' tab is active. Under the heading 'Validation Results', there is a table with one row. The first column contains a warning icon and the text 'IBM WebSphere Portal Server 8.0.0.0'. The second column contains the message: 'A supported operating system was not release of the product. See the WebSp http://www.ibm.com/support/docview. You can continue with the installation, t maintenance.'

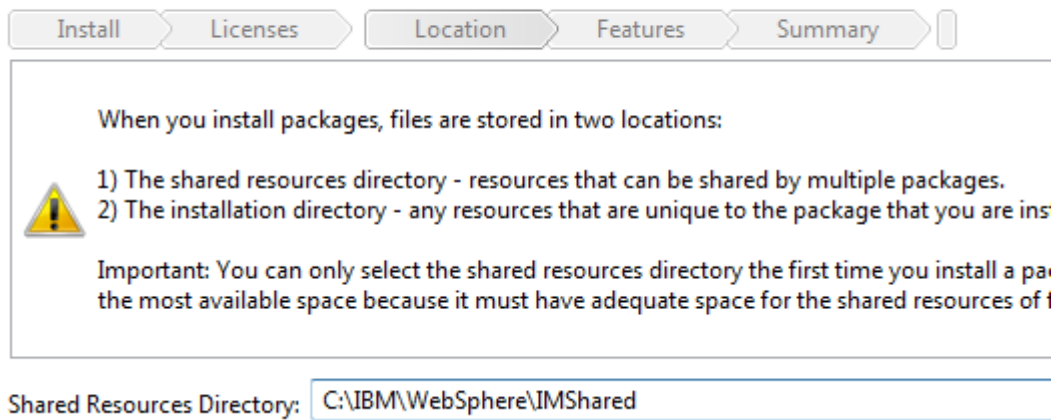
Validation Results	
..... ⚠ IBM WebSphere Portal Server 8.0.0.0	A supported operating system was not release of the product. See the WebSp http://www.ibm.com/support/docview . You can continue with the installation, t maintenance.

__27. Accept the terms of the license agreement and click the **Next** button.

__28. **Change** the *Shared Resources Directory* to the value below:

Shared Resources Directory: **C:\IBM\WebSphere\IMShared**

__29. Click **Next** when your screen looks like shown below.



__30. Select each of the following entries from the 'Package Group Name' list and **modify** the '**Installation Directory**' to the value listed.

IBM WebSphere Portal Server V8: **C:\IBM\WebSphere\PortalServer**

IBM WebSphere Application Server ND V8.0: **C:\IBM\WebSphere\AppServer**

__31. Verify the installation locations as shown below and click the **Next** button.

Install Packages

The packages will be installed into the indicated package groups. Select the package group to change the installation dir

Install Licenses Location Features Summary

Package Group Name	Installation Directory
IBM WebSphere Application Server Network Deployment V8.0	C:\IBM\WebSphere\AppServer
IBM WebSphere Application Server Network Deployment 8.0.0.3	
8.0.0.3-WS-WAS-TFPM59935 8.0.3.20120309_1201	
8.0.0.3-WS-WAS-TFPM60670 8.0.3.20120319_1949	
8.0.0.3-WS-WAS-TFPM61934 8.0.3.20120409_1230	
8.0.0.3-WS-WASProd-TFPM60134 8.0.3.20120312_1656	
IBM WebSphere Portal Server V8	C:\IBM\WebSphere\PortalServer
IBM WebSphere Portal Server 8.0.0.0	

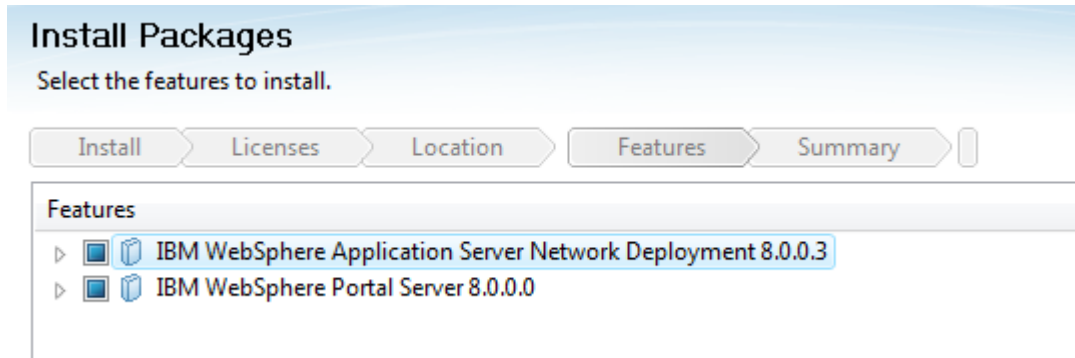
Package Group Name: IBM WebSphere Portal Server V8

Installation Directory: C:\IBM\WebSphere\PortalServer

Note: It is critical to modify the directories the products are installed to. Installing under 'Program Files' can cause permission issues with saving configuration changes.

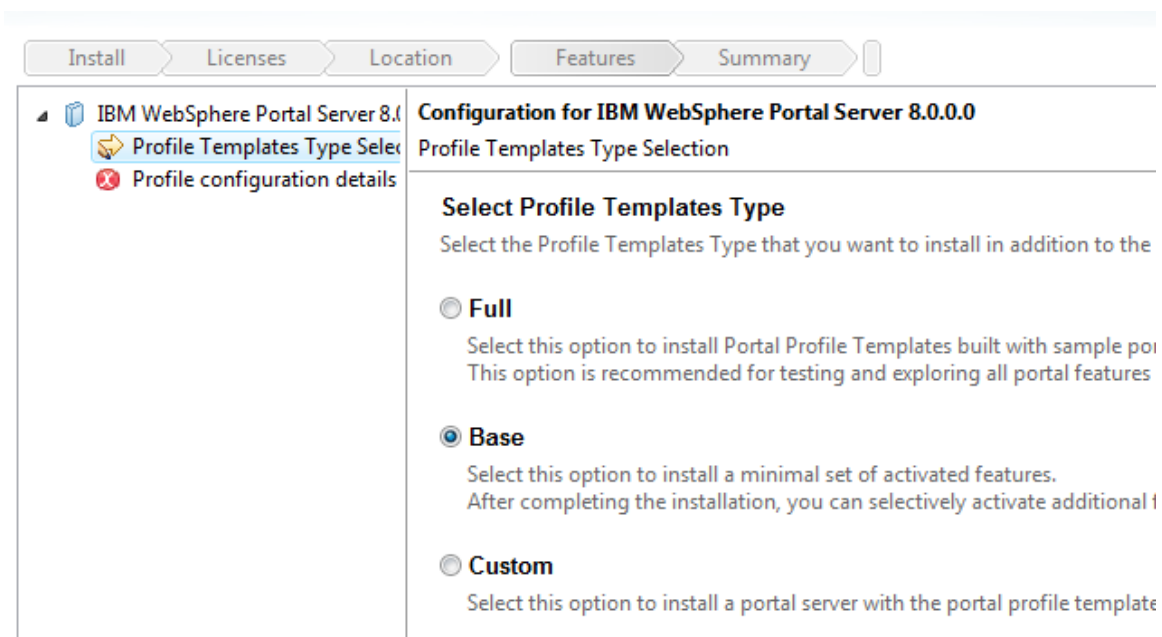
__32. Leave the default language selection and click the **Next** button.

__33. Accept the default features to install and click the **Next** button.



Note: Your features screen may look slightly different.

__34. In the feature configuration page, select the '**Base**' profile template type but don't click the next button yet.



__35. Click the link for '**Profile configuration details**' on the left, scroll down, and fill in **wpsadmin** for the **Administrator user ID** and both password fields.

Note: Also make sure the hostname is filled in with a value that is NOT 'localhost'. If 'localhost' does appear, you can either manually change it to the correct hostname of the machine or restart the Installation Manager after ensuring the computer is connected to a network. Restarting Installation Manager is suggested.

IBM WebSphere Portal Server 8.0.0.0

Profile configuration details

Advanced

Standard details

Topology

Host name

Trinity

Node name

TrinityNode

Cell name

TrinityCell

Admin Credential

Administrator user ID

wpsadmin

Administrator user password

Confirm administrator user password

Next

__36. Click the **Next** button once your configuration options match the last two steps.

__37. On the *Summary* page, check your installation options, especially the target installation directories, and click the **Install** button. If prompted by Windows security at any point allow or unblock the processes. WebSphere Portal will take quite a while to install.

Summary

Target Location
Shared Resources Directory: C:\IBM\IMShared

Packages

Packages	Installation Directory
<ul style="list-style-type: none"> IBM WebSphere Application Server Network Deployment V8.0 <ul style="list-style-type: none"> IBM WebSphere Application Server Network Deployment 8.0.0.3 <ul style="list-style-type: none"> 8.0.0.3-WS-WAS-TFPM59935 8.0.3.20120309_1201 8.0.0.3-WS-WAS-TFPM60670 8.0.3.20120319_1949 8.0.0.3-WS-WAS-TFPM61934 8.0.3.20120409_1230 8.0.0.3-WS-WASProd-TFPM60134 8.0.3.20120312_1656 EJBDeploy tool for pre-EJB 3.0 modules Stand-alone thin clients, resource adapters and embeddable containers IBM Software Development Kit 	C:\IBM\WebSphere\AppServer
<ul style="list-style-type: none"> IBM WebSphere Portal Server V8 <ul style="list-style-type: none"> IBM WebSphere Portal Server 8.0.0.0 <ul style="list-style-type: none"> Config Engine Portal Server Binary Portal Server Profile 	C:\IBM\WebSphere\PortalServer

__38. Once WebSphere Portal installs successfully, select the '**None**' radio button for the program to launch and click the **Finish** button.

The packages are installed. [View Log File](#)

The following packages were installed:

- IBM WebSphere Application Server Network Deployment V8.0
 - IBM WebSphere Application Server Network Deployment 8.0.0.3
 - 8.0.0.3-WS-WAS-TFPM59935 8.0.3.20120309_1201
 - 8.0.0.3-WS-WAS-TFPM60670 8.0.3.20120319_1949
 - 8.0.0.3-WS-WAS-TFPM61934 8.0.3.20120409_1230
 - 8.0.0.3-WS-WASProd-TFPM60134 8.0.3.20120312_1656
 - IBM WebSphere Portal Server V8
 - IBM WebSphere Portal Server 8.0.0.0

Which program do you want to :

- Use Portal FirstSteps to launch
- Profile Management Tool to launch
- Profile Management Tool to launch
- None

__39. Select **File** → **Exit** in the Installation Manager if it is still open.

__40. Close the Portal launchpad if it is still open.

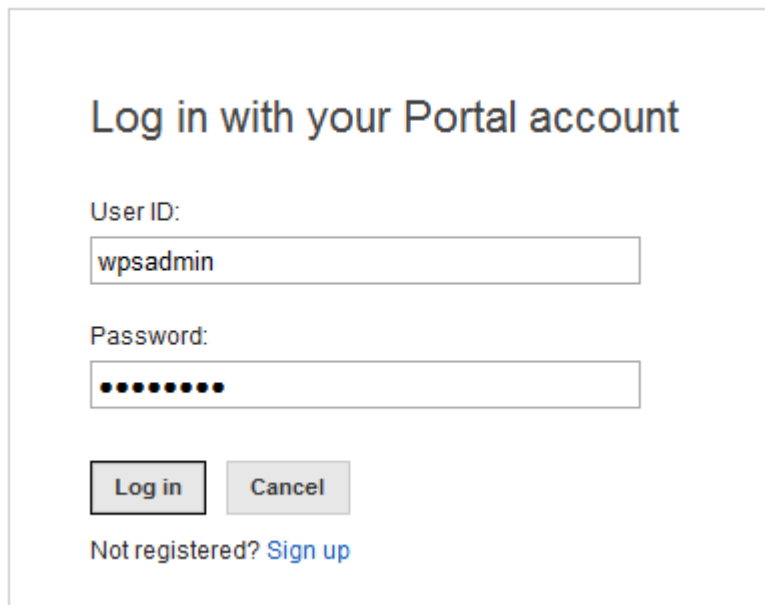
Part 9 - Verification of WebSphere Portal 8.0 installation

__1. Open a web browser to the following address:

http://localhost:10039/wps/portal

After a few moments the Portal login page should appear.

__2. Fill in a user ID and password of '**wpsadmin**' and press the **Log in** button.



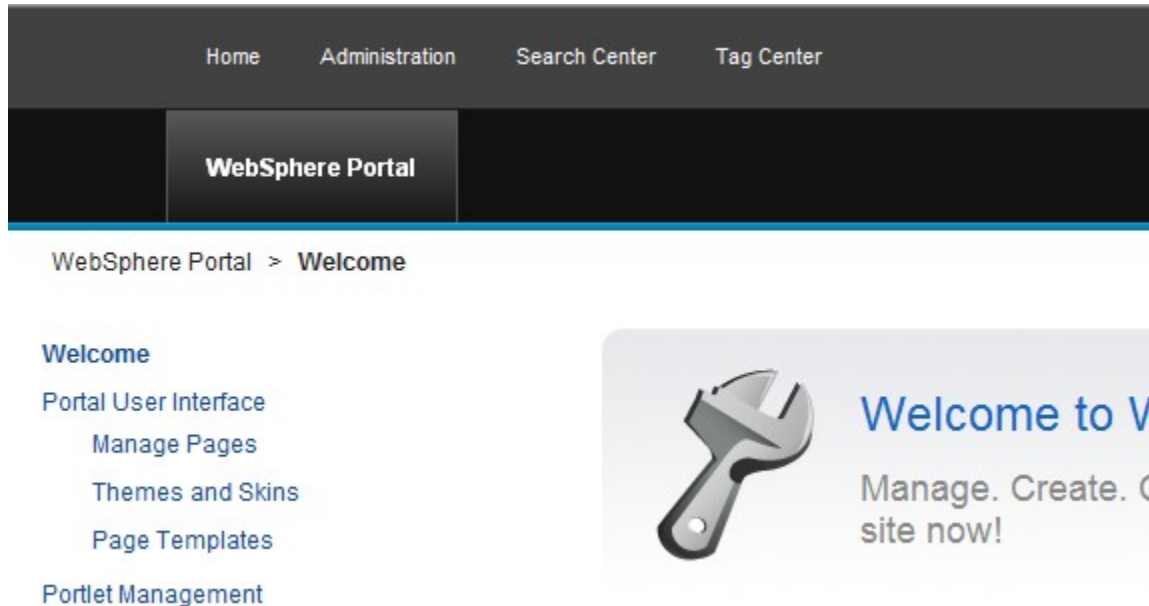
Log in with your Portal account

User ID:

Password:

Not registered? [Sign up](#)

__3. Make sure that you are logged in to the portal. You will only see the administration content by default.



__4. Click the **Home** link in the upper left and make sure you see that there is no content. This is because the normal WebSphere Portal features have not been installed since this will be a test server.

There is no content available.
[Click here to create a new page.](#)
Please check if there is content defined for the markup of your client device.

__5. Click the **Logout** link on the right and close the browser.

__6. Close all windows.

__7. Restart the computer. This will automatically stop the WebSphere Portal server and improve the installation of RAD next.

Part 10 - Installing Rational Application Developer v8.5 Trial (RAD 8.5.0)

1. Login as the administrative user that you used for the Portal installation.
2. From C:\Software\RAD_SETUP, run **launchpad.exe**. The installer will begin.

Note: If installing on Vista/7/2008 right click the **launchpad.exe** program and select '**Run as Administrator**' and accept any security prompts.

3. Click **Install IBM Rational Application Developer for WebSphere**.



A new program – the **IBM Installation Manager** will launch. You will then be prompted to *Install Packages*.

4. From the *Install Packages* screen **Uncheck all** of the software **except** the software for **IBM Rational Application Developer for WebSphere Software**
5. Make sure only **IBM Rational Application Developer for WebSphere Software Version 8.5.0** is selected as shown below and click **Next**.

Install Packages

Select packages to install:

Installation Packages	Status
▲ <input type="checkbox"/> IBM WebSphere Application Server <input type="checkbox"/> Version 8.0.0.3	
▲ <input type="checkbox"/> IBM WebSphere Application Server <input type="checkbox"/> Version 8.5.0.0	
▲ <input checked="" type="checkbox"/> IBM® Rational® Application Developer for WebSphere® Software <input checked="" type="checkbox"/> Version 8.5	Will be installed
▲ <input type="checkbox"/> IBM® Rational® Desktop Connection Toolkit for Cloud Environments <input type="checkbox"/> Version 1.0.5	
▲ <input type="checkbox"/> IBM® WebSphere® Application Server V7 (32-bit) Test Environment <input type="checkbox"/> Version 7.0.0.23	
▲ <input type="checkbox"/> IBM® WebSphere® Application Server V7 (64-bit) Test Environment <input type="checkbox"/> Version 7.0.0.23	

The *Validation Results* page will appear.

__6. Check that you don't have any validation errors except the warning about stopping running programs including anti-virus software and click the **Next** button.

Install Packages
Validate the prerequisites for the selected packages. Click the marked nodes for additional information at

Install Prerequisite Licenses Location Features Summary

Validation Results

IBM® Rational® Application Developer for WebSph

Warning! Before proceeding with the inst anti-virus software. Anti-virus software c installation process. For more informati

The *License Agreement* screen will appear.

__7. At the bottom of the screen, select **I accept the terms in the license agreement** and click **Next**.

__8. Change the **IBM Software Delivery Platform** to **C:\IBM\SDP**

__9. Verify the installation locations as shown below and click the **Next** button. You may not see the architecture selection options.

Use the existing package group
 Create a new package group

Package Group Name	Installation Directory
IBM Software Delivery Platform	C:\IBM\SDP

Package Group Name: IBM Software Delivery Platform
Installation Directory: C:\IBM\SDP
Architecture Selection: 32-bit 64-bit

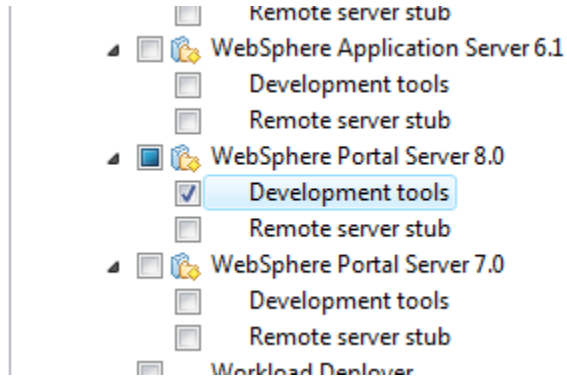
__10. Leave the option to extend an existing Eclipse installation unselected and click the **Next** button.

__11. Leave the default language selection and click the **Next** button.

__12. In the feature selection page expand **IBM Rational Application Developer for WebSphere Software 8.5.0** → **Server Tools** → **WebSphere Portal Server 8.0**

__13. Check the option for **Development tools**.

__14. Once your features are set as shown below click the **Next** button.



__15. For the option for the *Help System* select **Access help from the Web** and click the **Next** button.

After the installation, you can change how you access help by using the he

- Access help from the Web
- Download help and access the content locally. Only limited help con
When you first start the product, the complete online help is downloa
an Internet connection. On subsequent startups, available updates to
- Access help from a server on your intranet

Host:

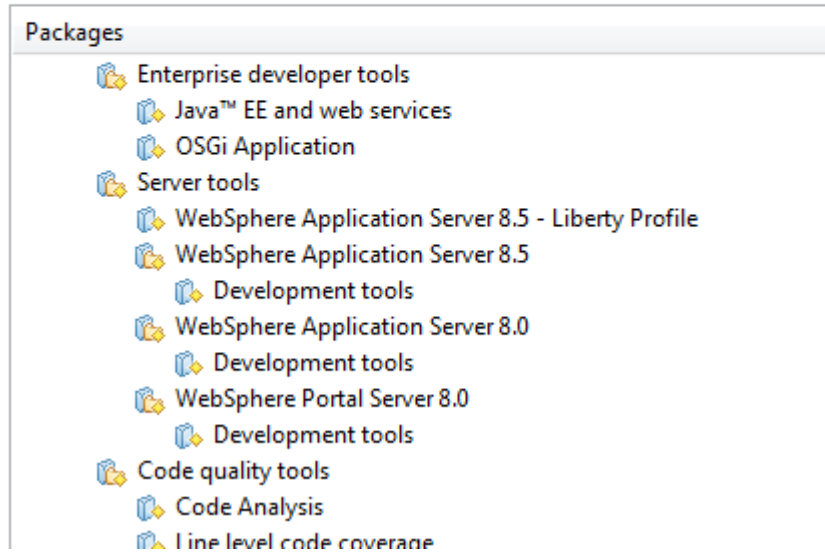
You will be asked to review summary information.

__16. After checking that **WebSphere Portal Server 8.0** → **Development tools** are selected to be installed click **Install**.

Target Location

Package Group Name: IBM Software Delivery Platform
Installation Directory: C:\IBM\SDP
Shared Resources Directory: C:\IBM\WebSphere\IMShared

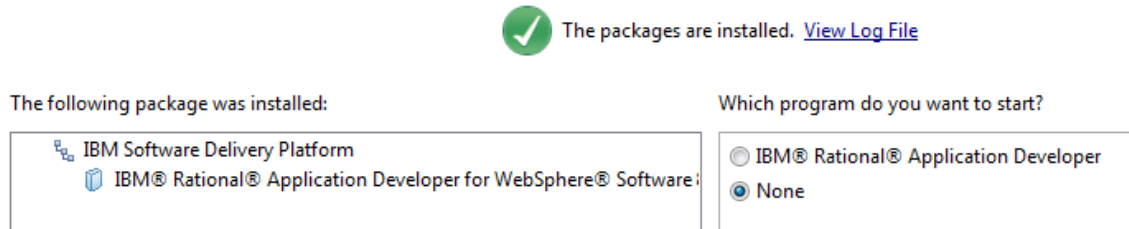
Packages



RAD 8.5.0 installation will start, this will take some time.

Eventually, it will complete.

__ 17. Select **None** and click the **Finish** button.



__ 18. Close all open windows.

Part 11 - Verification of Rational Application Developer v8.5 Trial (RAD 8.5.0) installation

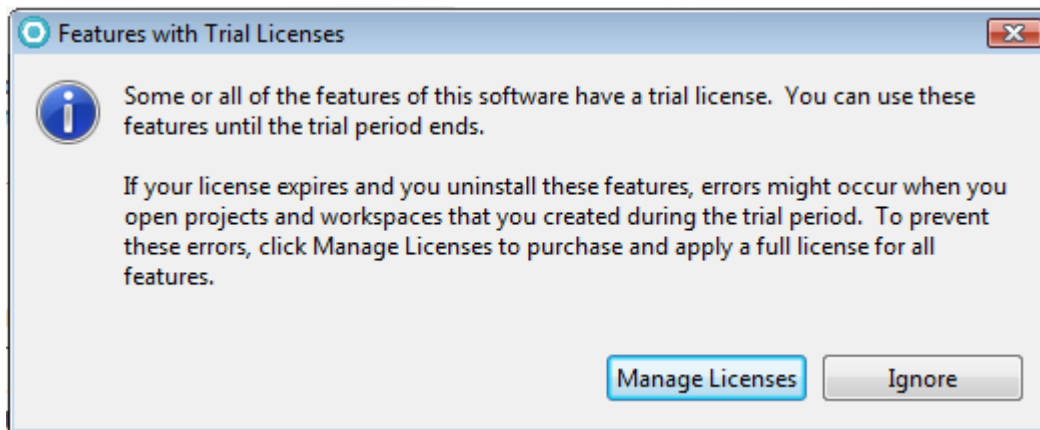
__ 1. From the Start menu, select **All Programs > IBM Software Delivery Platform > IBM Rational Application Developer 8.5 > Rational Application Developer**.

__ 2. The workspace Launcher window will open, accept the default workspace location and click **OK**.

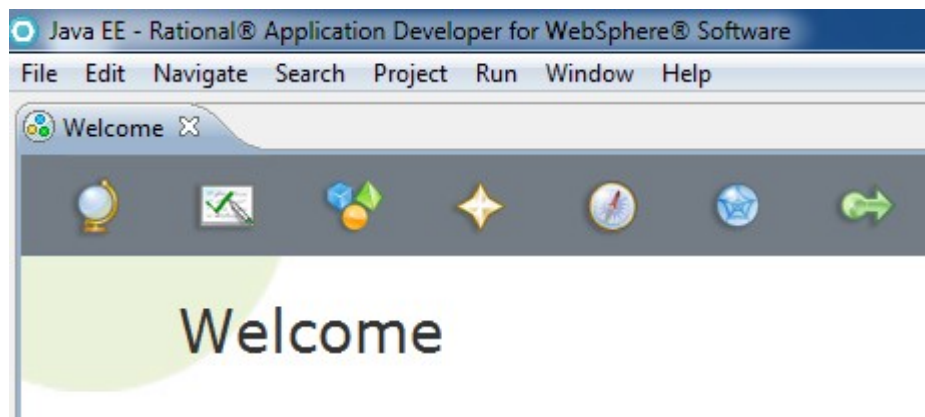
Rational Application Developer v8.5 Trial (RAD 8.5.0) will start.



__3. The **Features with Trial Licenses** dialog will open. Click **Ignore**.



__4. Finally the *Welcome* page will open.



__5. From the menu, select **File->Exit** to close Rational Application Developer.

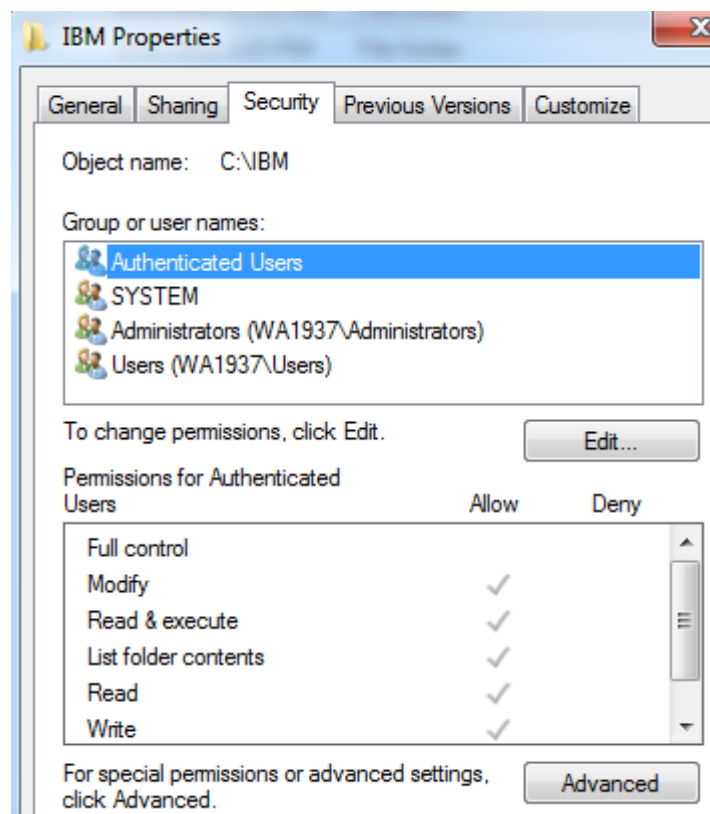
__6. Close all open windows.

Part 12 - Modify File Permissions

Note: These steps allow full access to the directories used by the Portal install. This is required so that students can start the Portal server from within RAD and will allow the Portal server to write to the log files. Without these steps the students won't be able to start the Portal server and won't be able to do the labs.

The steps to accomplish this may vary by Windows version but the goal is the same, granting access to all users to the Portal install. If you have questions about how to accomplish this contact the setup support person for the class.

- __ 1. Right click C:\IBM and select **Properties**.
- __ 2. Click the **Security** tab.
- __ 3. Click **Advanced**.

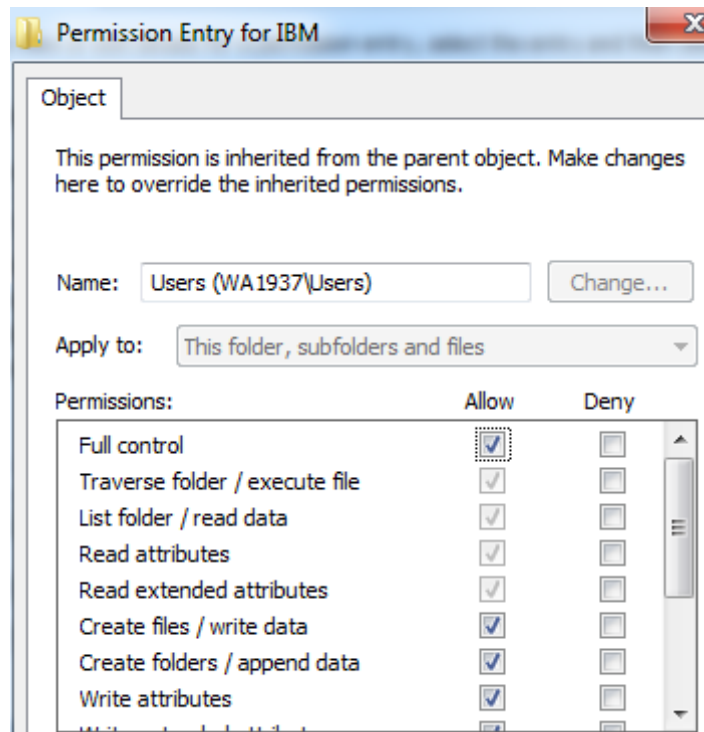


- __ 4. Click **Change Permissions**.

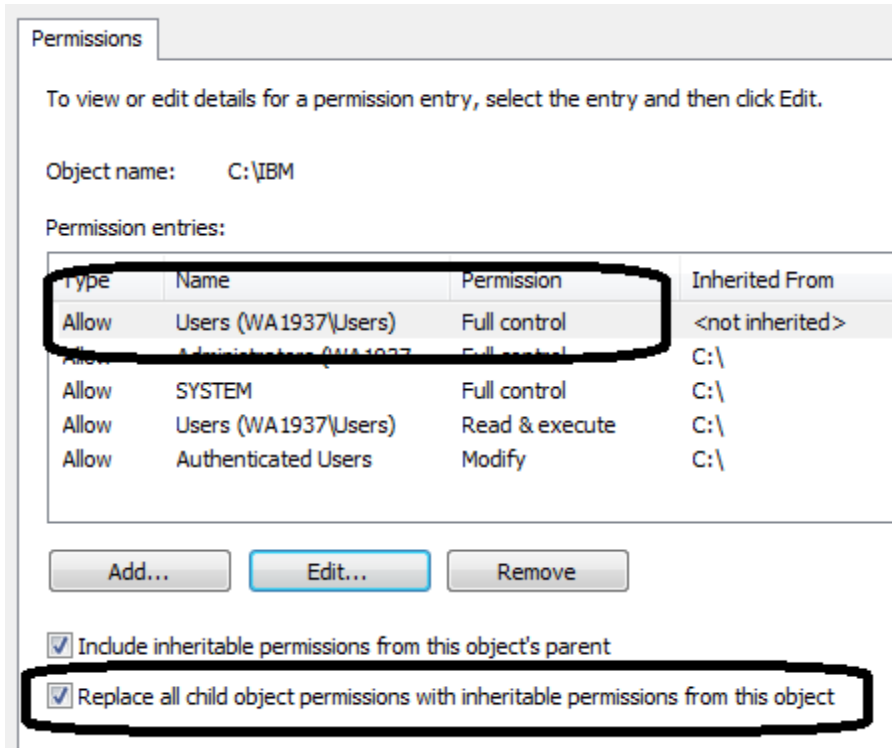
__5. Select the **Users entry (add one if not present)**.

__6. Click **Edit...**

__7. Check **Full Control** permission option and click **OK**.

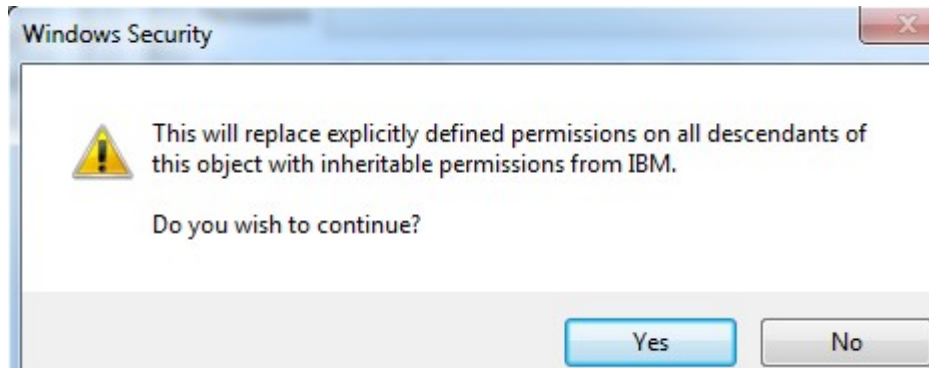


__8. Select the check box for "**Replace all child permissions with inheritable permissions from this objects**" and then click **OK**.

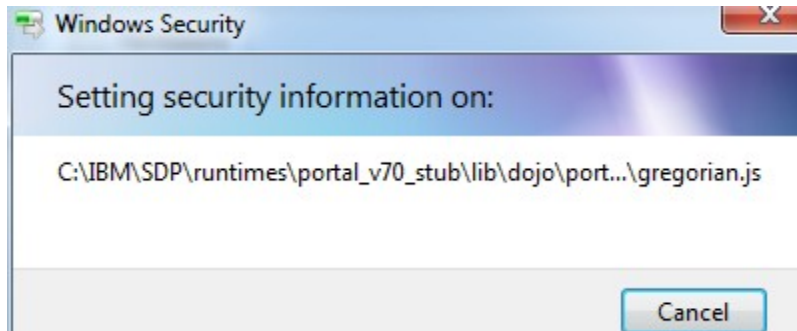


__9. Click OK to continue.

__10. A *Windows security* dialog will open, click **Yes**.



__11. Wait until finishes updating security, and close all windows when is done.



__12. Give full privileges to **C:\LabFiles** to all users.

__13. Restart the computer and login with the user that the student will use to do the Labs.

__14. Make sure the user has full access to **C:\LabFiles** as well as **C:\IBM** folders.

Congratulations, **WebSphere Portal v8.0** and **Rational Application Developer v8.5.0** have been installed.