

WA2063 WebSphere Application Server 8.0 Administration Fundamentals

Classroom Setup Guide

Web Age Solutions Inc.

Table of Contents

Classroom Requirements.....	3
Part 1 - Minimum Hardware Requirements	3
Part 2 - Minimum Software Requirements	3
Part 3 - Software Provided.....	4
Part 4 - Important Ghosting or Imaging Information.....	4
Software Installation.....	5
Part 1 - Instructions.....	5
Part 2 - Installing Microsoft Visual C++ 2008 Redistributable.....	6
Part 3 - Installing DB2 v9.5 Express Edition.....	7
Part 4 - Installing WebSphere MQ v7.0 Trial.....	15

Classroom Requirements

Part 1 - Minimum Hardware Requirements

- 2.5 GHz Pentium
- 2 GB Memory (4 GB recommended)
- 20 GB disk space
- Network connectivity to the internet
- Each machine must have a static host name

Part 2 - Minimum Software Requirements

- One of the following Windows versions:
 - Windows XP Professional with SP3
 - Windows Server 2003 with SP2
 - Windows Vista (Business, Enterprise, or Ultimate)
 - Windows Server 2008 with SP1
- Internet Explorer 7 or Internet Explorer 8
- Adobe Acrobat Reader
- WinZip
- Apache JMeter 2.3.4*
- IBM DB2 V9.5 Express Edition *
- IBM WebSphere Application Server Network Deployment v8.0 *#
- IBM WebSphere Application Server v8.0 Supplement *
- IBM WebSphere MQ v7.0 Trial *

* - indicates software provided as part of the courseware.

- indicates software that the client must have licenses to use the product.

Part 3 - Software Provided

You will receive a USB memory stick containing the following files:

- **WA2063_1.ZIP**
- **WA2063_2.ZIP**

All other software listed under Minimum Software Requirements is either commercially licensed software that you must provide or software that is freely available off the Internet.

Part 4 - Important Ghosting or Imaging Information

Some of the software installed for this course will not function after changing the computer hostname. As such, cloning or imaging should not be used on a fully installed system.

You can save time by extracting the contents of the USB memory stick to C:\ on a clean OS install (no other software installed) and then imaging that hard drive. After restoring the image to the other computers and changing the hostnames, you can then install the software on each computer individually by following the instructions that are detailed later in this document.

Software Installation

Part 1 - Instructions

__1. Ensure that a user that is a member of the Administrators group is available for the students to use during class.

__2. Extract both the **WA2063_1.ZIP** and **WA2063_2.ZIP** files to C:\

__3. Review that the following folders were created:

- C:\LabFiles
- C:\Software\DB2 v9.5 Express Edition
- C:\Software\jakarta-jmeter-2.3.4
- C:\Software\WAS ND v80
- C:\Software\WebSphere MQ v7.0 Trial

__4. Review the following file was created.

- C:\Software\vcredist_x86.exe

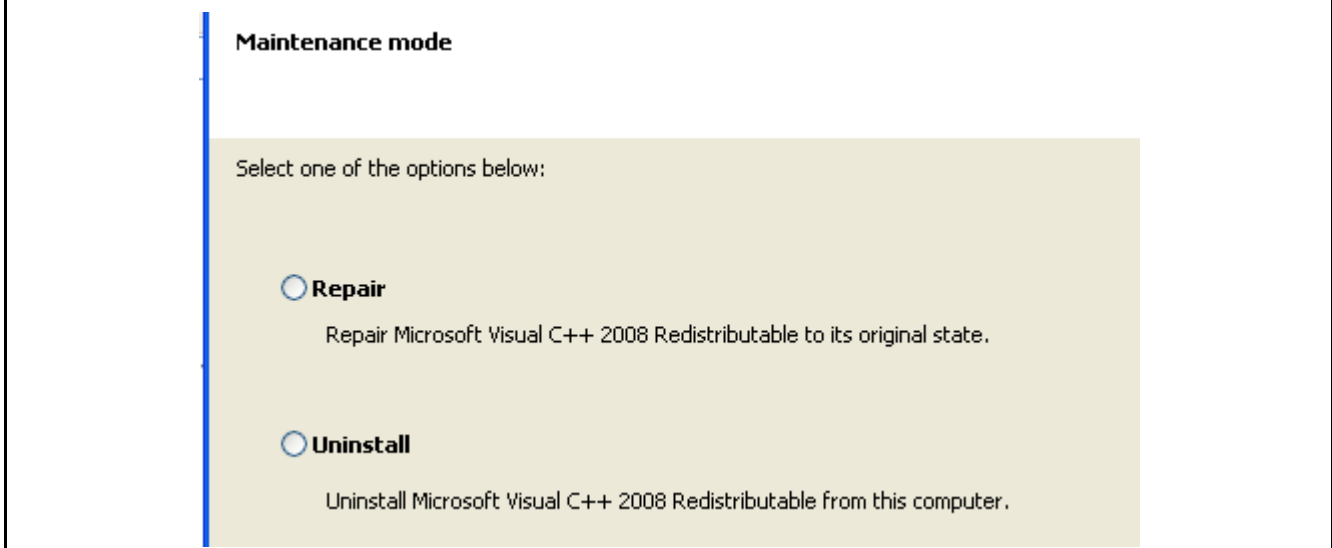
Part 2 - Installing Microsoft Visual C++ 2008 Redistributable

__1. Execute **vcredist_x86.exe** from **C:\Software** folder.

__2. On the first screen click the **Next** button.



Note: If you get the screen below as the first screen of the installation program you do not need to install the software. Click the **Cancel** button and confirm you want to cancel the installation.



__3. Check the checkbox to accept the license and click the **Install** button.

__4. Click **Finish** when the message **Setup Complete** appears.

Visual C++ 2008 Redistributable has been installed.

Part 3 - Installing DB2 v9.5 Express Edition

Note: You cannot use ghosting or disk imaging to install this software. You must install the software on each machine separately.

__1. Login as a user with local administrative rights.

__2. Run **setup.exe** from the **C:\Software\DB2 v9.5 Express Edition** folder.

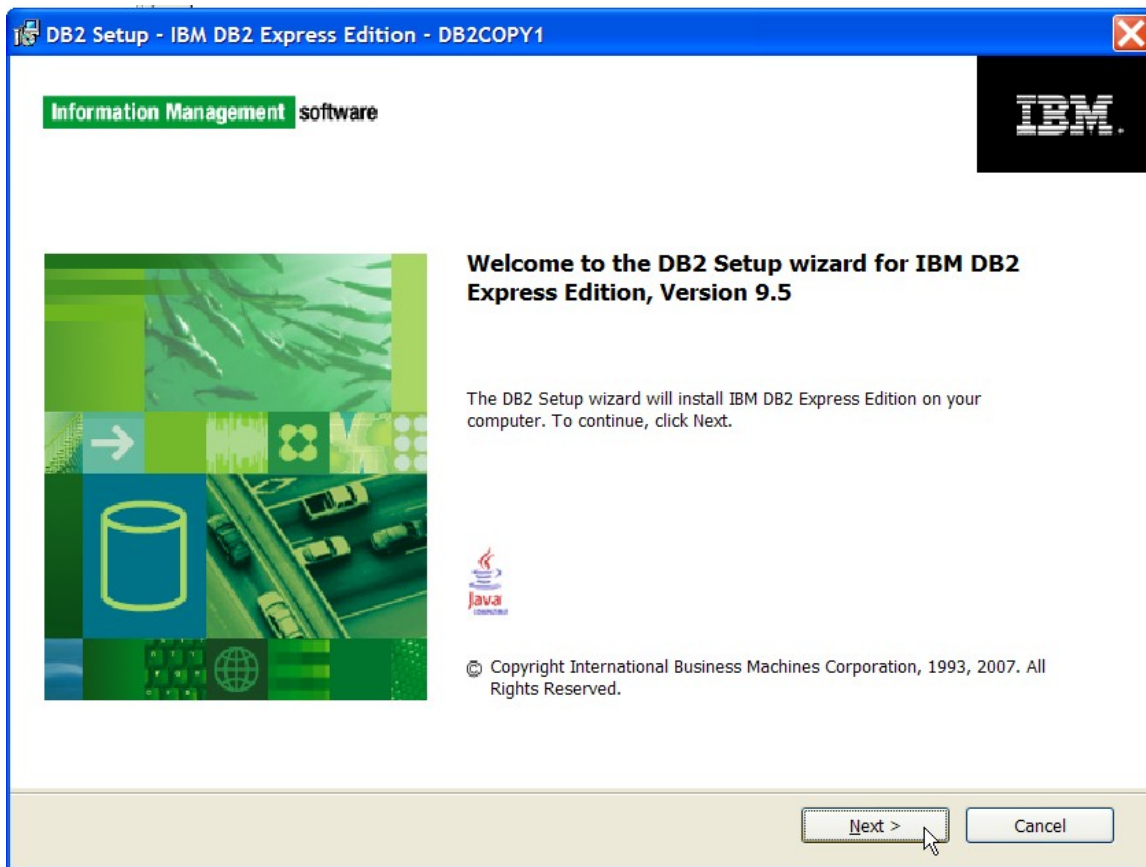
Note: If installing on Windows Vista or Windows Server 2008 run the setup as the administrator account by right clicking the file and selecting '**Run as administrator**'.

__3. On the window that appears click the link for “**Install a Product**” along the left side.



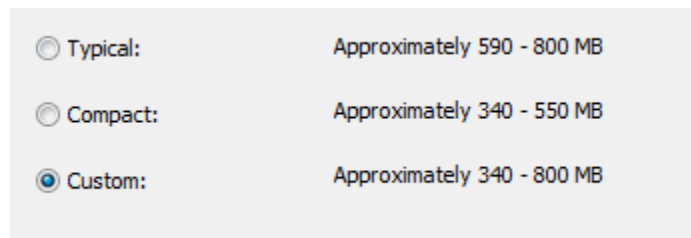
__4. Click the **Install New** button.

__5. Wait while DB2 prepares the setup. At the first screen of the DB2 setup click **Next**.

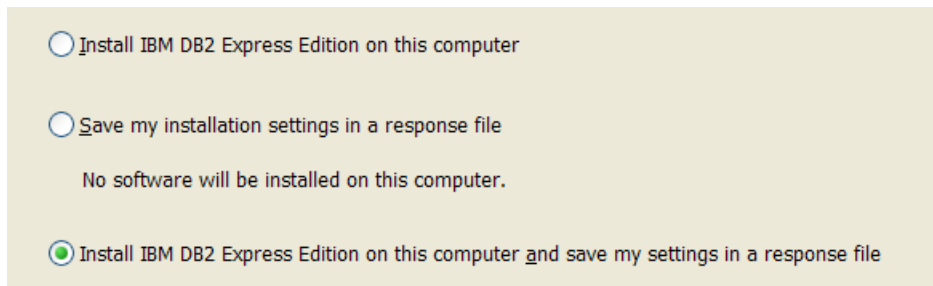


__6. Accept the terms of the license and click the **Next** button.

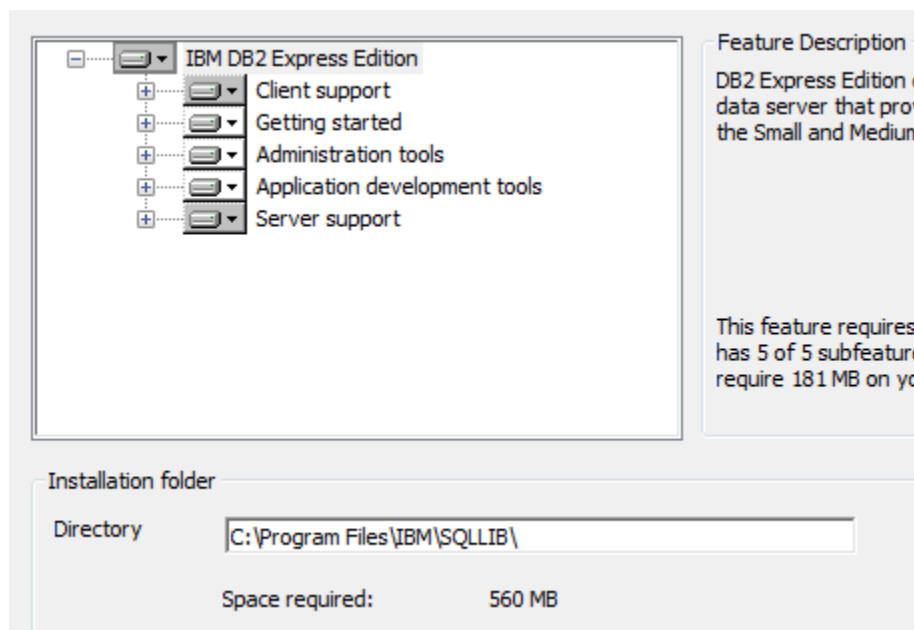
__7. Select a **Custom** install and click **Next**.



__8. Leave the default installation options and click the **Next** button.

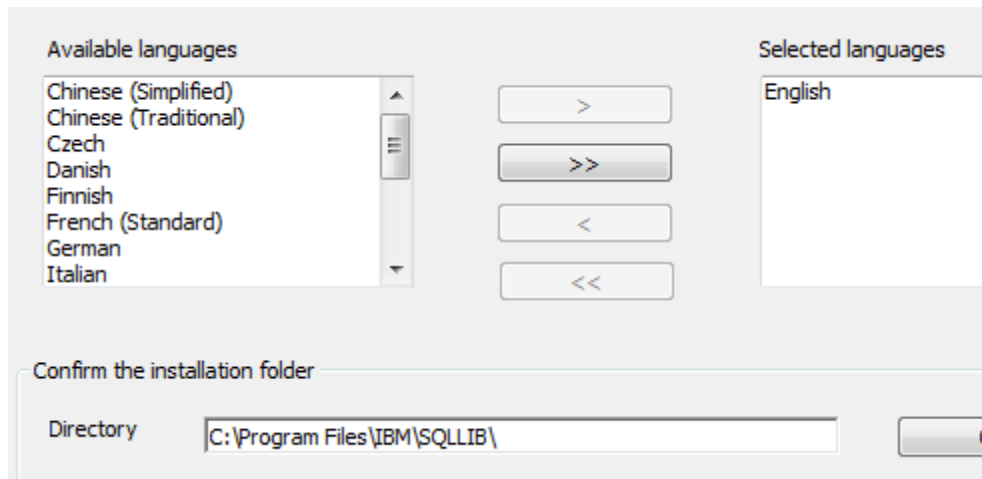


__9. Leave the default features and installation directory and click **Next**.

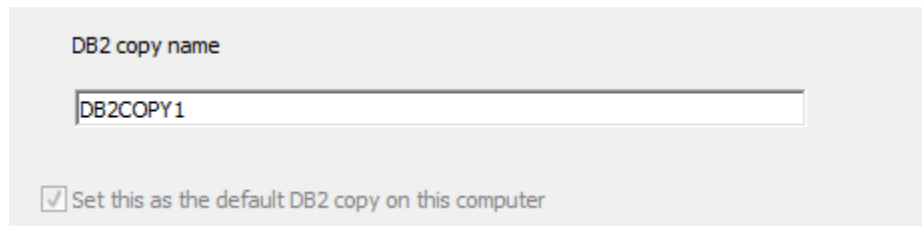


Note: Your default installation directory may be slightly different on 64-bit OS.

__10. Leave the default language and again the default installation folder and click the **Next** button.



__11. Leave the default DB2 copy name and click the **Next** button.



__12. Leave the default Information Center option and click the **Next** button.

13. Enter **db2admin** for the username and password. **Be sure to leave the domain property default to use a local account.** Click the **Next** button. Click **Yes** if asked to create the user.

The screenshot shows a configuration window for a DB2 user. At the top, there are two radio buttons: "Local user or Domain user account" (which is selected) and "LocalSystem account". Below this is a "User information" section with four fields: "Domain" (a dropdown menu set to "None - use local user account"), "User name" (a text box containing "db2admin"), "Password" (a masked text box with "*****"), and "Confirm password" (another masked text box with "*****"). At the bottom, there is a checked checkbox labeled "Use the same user name and password for the remaining DB2 services".

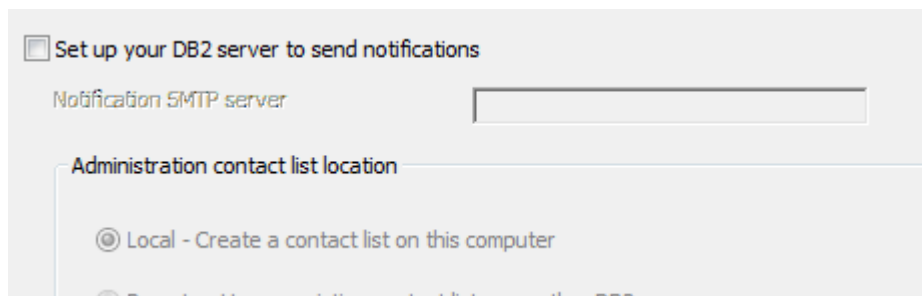
Note: If you can't use this password because of password policies use a password that will satisfy password policies. Make sure to tell the instructor that the DB2 software was installed with a different user and/or password.

14. Click **Next** to accept the defaults under the configure DB2 instances.

The screenshot shows the "DB2 Instances:" configuration screen. On the left, there is a list box containing the instance name "DB2". To the right of the list box is a "Configure..." button. Below the list box is an "Instance description" section with a text box containing the text: "The default instance, DB2, stores application data."

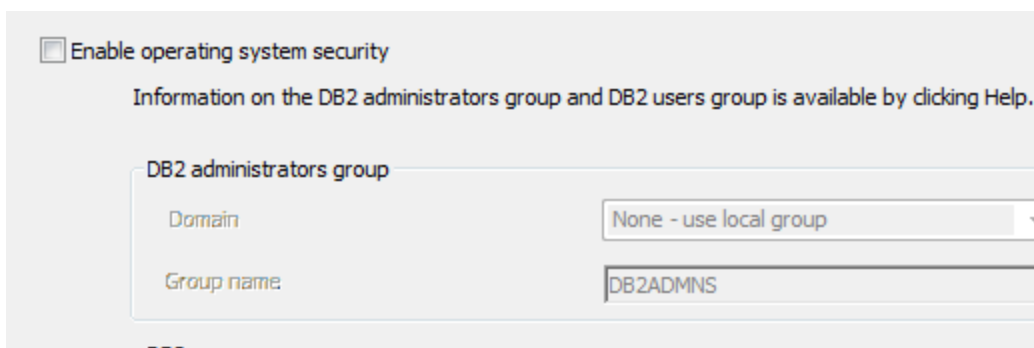
__15. Leave the default option for the DB2 tools catalog and click the **Next** button.

__16. Uncheck **Set up your DB2 server to send notifications** and click **Next**.



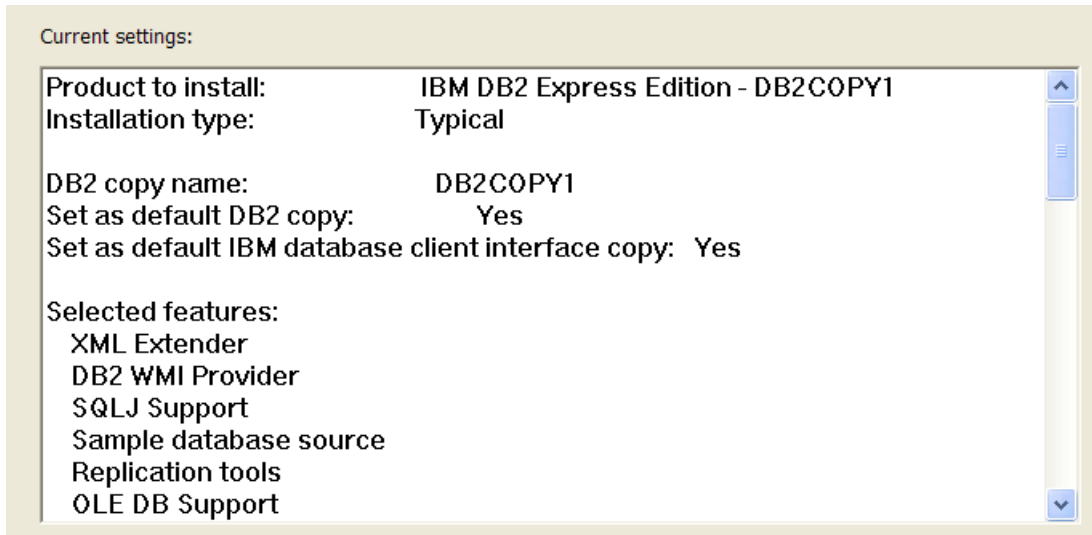
The *Enable operating system security for DB2 objects* page will appear.

__17. Uncheck **Enable operating system security** and click **Next**.



Note: This step is very critical on Windows Vista/7 computers as it makes it easier to work with DB2 from multiple user accounts.

__18. Click the **Install** or **Finish** button to install.



__19. If you are prompted by Windows User Account Control continue to install.

__20. Wait a bit while the software installs. Once the installation completes click the **Next** button.

__21. Click **Finish** when presented with optional additional products to install.

__22. If you are prompted to check for updates click **No**.

__23. Close the First Steps utility if it opens.

__24. Restart the machine and login as the user 'db2admin' with the password 'db2admin'.

__25. Open a command prompt by clicking on **Start -> Run**, enter **cmd** and click **OK**.

__26. Enter the following command to switch directories:

cd C:\Program Files\IBM\SQLLIB\bin

Note: You may need to change this command slightly if the product was installed to a different default location. Most commonly this would be:

cd C:\Program Files (x86)\IBM\SQLLIB\bin

__27. Enter the following command to create the sample database. This may take some time.

db2sampl

__28. Make sure you get messages indicating the creation of the database is complete.

```
C:\Documents and Settings\db2admin>cd C:\Program Files\IBM\SQLLIB\bin
C:\Program Files\IBM\SQLLIB\BIN>db2sampl
Creating database "SAMPLE"...
Connecting to database "SAMPLE"...
Creating tables and data in schema "DB2ADMIN"...
Creating tables with XML columns and XML data in schema "DB2ADMIN"...
'db2sampl' processing complete.
C:\Program Files\IBM\SQLLIB\BIN>
```

__29. Close the command prompt window.

__30. Open a DB2 command line processor by selecting **Start -> Programs -> IBM DB2 -> DB2COPY1 (Default) -> Command Line Tools -> Command Line Processor.**

__31. Enter the following to connect the database:

connect to sample user db2admin using db2admin

__32. Enter the following to connect the query the table:

select * from employee

__33. Make sure you see the screen below displaying all the information in the employee table.

```
200240 ROBERT M MONTEUERDE D21 3180 12/05/2004 CLERK
17 M 03/31/1984 37760.00 600.00 2301.00
200280 EILEEN R SCHWARTZ E11 8997 03/24/1997 OPERATOR
17 F 03/28/1966 46250.00 500.00 2100.00
200310 MICHELLE F SPRINGER E11 3332 09/12/1994 OPERATOR
12 F 04/21/1961 35900.00 300.00 1272.00
200330 HELENA WONG E21 2103 02/23/2006 FIELDREP
14 F 07/18/1971 35370.00 500.00 2030.00
200340 ROY R ALONZO E21 5698 07/05/1997 FIELDREP
16 M 05/17/1956 31840.00 500.00 1907.00

42 record(s) selected.
db2 =>
```

__34. Enter **quit** and hit Enter.

__35. Enter **exit** and hit Enter to close the Command Line Processor.

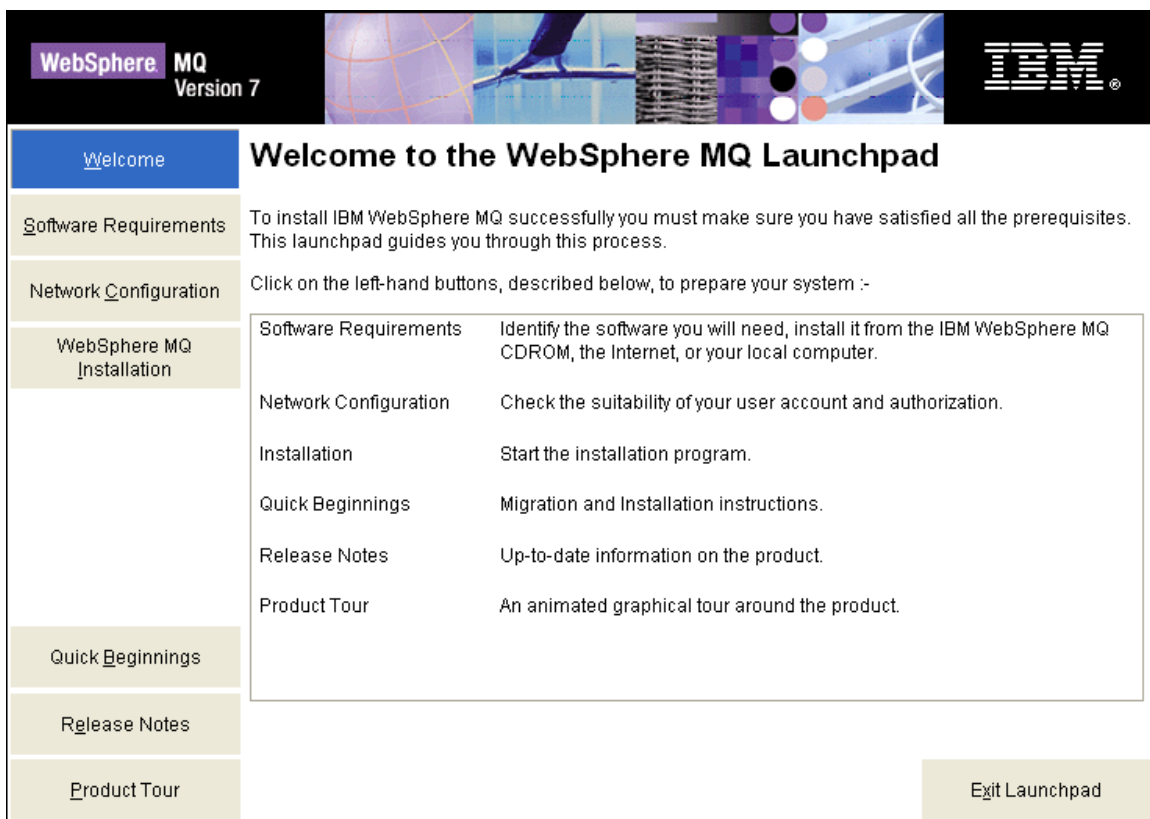
DB2 v9.5 Express Edition is installed.

Part 4 - Installing WebSphere MQ v7.0 Trial

Note: This is a trial version and should not be installed more than 60 days before the class.

__1. Login as a user with local administrative rights.

__2. Run **Setup.exe** from the **C:\Software\WebSphere MQ v7.0 Trial** folder. The **WebSphere MQ Launchpad** should open up.

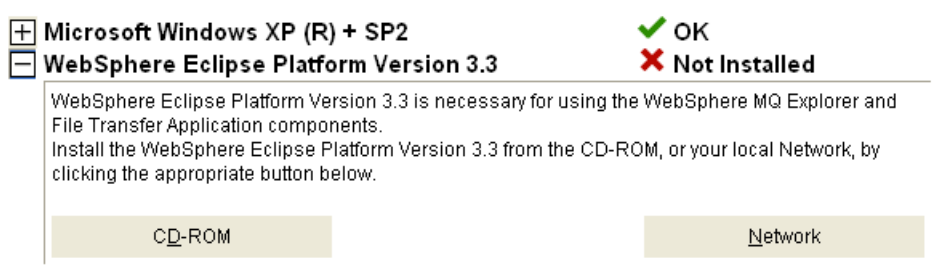


__3. Click on **Software Requirements** in the navigation bar.

__4. You should see a red **X** and the **Not Installed** message next to **WebSphere Eclipse Platform Version 3.3**

__5. To install **WebSphere Eclipse Platform Version 3.3**, expand it by clicking on the + sign next to it.

__6. Click on the **CD-ROM** button.



__7. Leave **English** selected in the **Select Setup Language** pop-up window and click **OK**.

__8. Click **Next** in the **Welcome** window.

__9. Accept the license agreement and press the **Next** button.

__10. Leave the default destination folder and click **Next**.

__11. In the **Ready to Install WebSphere Eclipse Platform** window click **Install**.

__12. The installation will take a few minutes. Once it is complete press the **Finish** button.

__13. Now that you've installed the pre-requisite software for installing WebSphere MQ, click the **Refresh** button on the software requirements page of the **WebSphere MQ Launchpad**. It should show that all software requirements are satisfied.

Software Requirements for WebSphere MQ on Windows XP

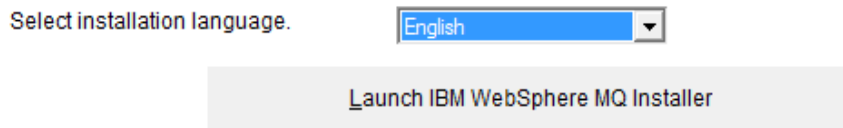
The following software is required for a full install. If you are only installing selected components on this system, refer to the installation instructions for prerequisite software.

Click on the plus (+) buttons below to expand the details on each item's status.

<input type="checkbox"/> Microsoft Windows XP (R) + SP2	✔ OK
<input type="checkbox"/> WebSphere Eclipse Platform Version 3.3	✔ OK

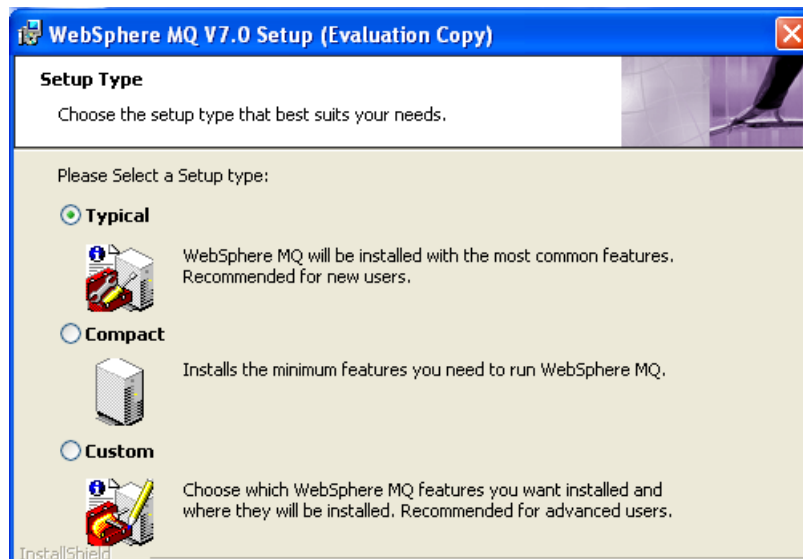
__14. Now proceed to installing WebSphere MQ by clicking on **WebSphere MQ Installation** on the left menu.

__15. Click on the **Launch IBM WebSphere MQ Installer** button.



__16. Accept the license agreement and press the **Next** button.

__17. Leave **Typical** selected and click **Next**.



__18. Click the **Install** button to begin the installation.

__19. The installation will take several minutes. Once it is complete press the **Finish** button.

__20. The installation program will open up the **Welcome to the Prepare WebSphere MQ Wizard** window. Click **Cancel**.

__21. Confirm that you want to cancel the wizard by clicking the **OK** button.

__22. Restart the computer.

Installation verification of WebSphere MQ v7.0 Trial

__1. Login as the same user you used to install WebSphere MQ.

__2. You should see an icon in your system tray with a green icon which indicates that WebSphere MQ is running.



Note: If you are installing to Windows Vista you may not see this icon.

__3. To verify the installation was successful, open a command prompt by selecting Start → Programs → Accessories → Command Prompt.

Note: If you are installing on Windows Vista you must right click the command prompt shortcut and select **Run as administrator** or you will not be able to execute the next command.

__4. Enter The following command:

crtmqm TESTQM

__5. You should see the following message. If you get an error that the command is not recognized you have not rebooted the machine after installation.

```
cmd Command Prompt
Microsoft Windows XP [Version 5.1.2600]
(C) Copyright 1985-2001 Microsoft Corp.

C:\Documents and Settings\Student>crtmqm TESTQM
There are 90 days left in the trial period for this copy of WebSphere MQ.
WebSphere MQ queue manager created.
Creating or replacing default objects for TESTQM.
Default objects statistics : 61 created. 0 replaced. 0 failed.
Completing setup.
Setup completed.

C:\Documents and Settings\Student>_
```

__6. Close the command prompt window.

You have successfully installed WebSphere MQ v7.0 Trial.

Congratulations. The installation of WA2063 WebSphere Application Server 8.0 Administration Fundamentals has been completed.