

WA2009 Java EE 6 Programming - WebLogic 12c - Eclipse

Classroom Setup Guide

Web Age Solutions Inc.

Table of Contents

Part 1 - Minimum Hardware Requirements	3
Part 2 - Minimum Software Requirements	3
Part 3 - Software Provided.....	4
Part 4 - Instructions.....	4
Part 5 - Privileges to Users.....	5
Part 6 - Installing JDK 6 Update 20.....	8
Part 7 - Verification of JDK 6 Update 20.....	13
Part 8 - Summary.....	14

Part 1 - Minimum Hardware Requirements

- CPU to meet the minimum requirements of the operating system being used
- 1.5 GB minimum, 2GB recommended.
- 8 GB in the hard disk

Part 2 - Minimum Software Requirements

- One of the following Windows versions:
 - Windows Vista (Business, Enterprise, or Ultimate)
 - Windows 7 (Professional, Enterprise, or Ultimate)
 - Windows Server 2008
 - Windows 8
- Adobe Acrobat Reader
- Zip extraction utility
- One of the following web browsers
 - Internet Explorer 8 or 9
 - Latest FireFox
 - Latest Chrome
- Oracle WebLogic Server 12c *
- Oracle Enterprise Pack for Eclipse *
- Java SE 6 JDK *
- Apache Derby 10.7.1.1 *

* - indicates software provided as part of the courseware.

Part 3 - Software Provided

You will receive the following file:

- **WA2009.ZIP**

All other software listed under Minimum Software Requirements is either commercially licensed software that you must provide or software that is freely available off the Internet.

Part 4 - Instructions

__1. Extract the **WA2009.ZIP** file to C:\

__2. Review that the following folders were created:

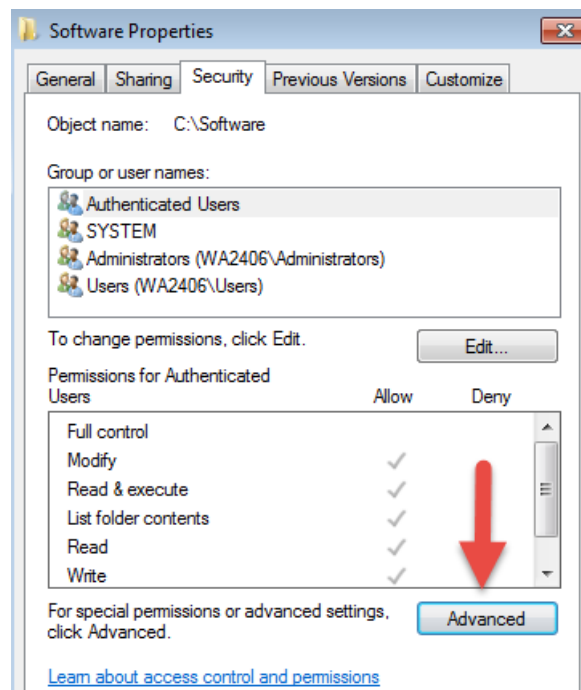
- **C:\LabFiles**
- **C:\Software\db-derby-10.7.1.1-bin**
- **C:\Software\OEPE**
- **C:\Software\WebLogic**

__3. Review that the following file was created:

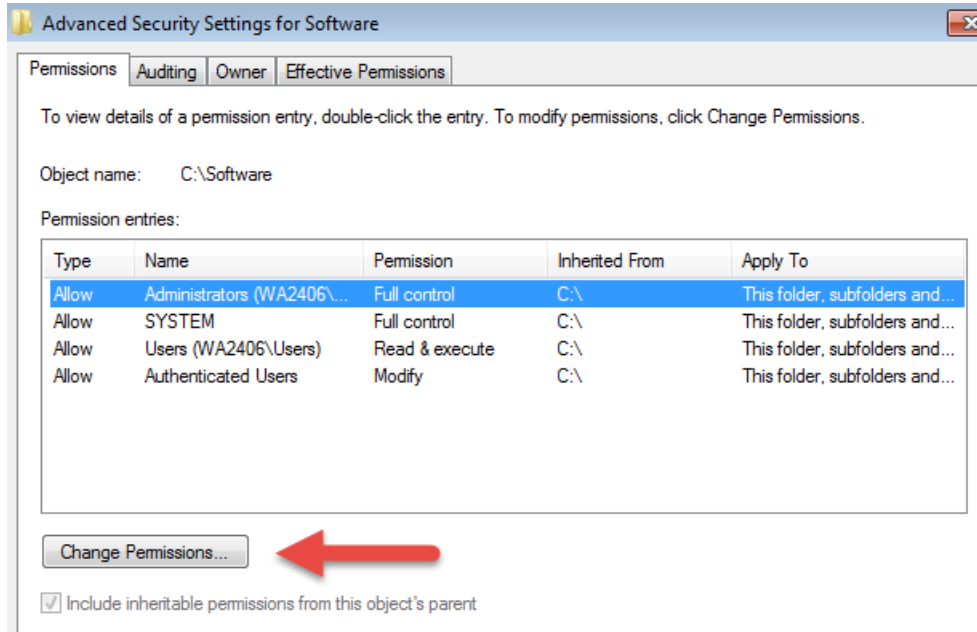
- **C:\Software\jdk-6u20-windows-i586.exe**

Part 5 - Privileges to Users

- __1. Create the user that the students will use during the class.
- __2. Give the student user account administrative rights. During the labs the student requires this to install software.
- __3. Open Windows Explorer.
- __4. Right click C:**Software** and select **Properties**.
- __5. Click the **Security** tab.
- __6. Click **Advanced**.

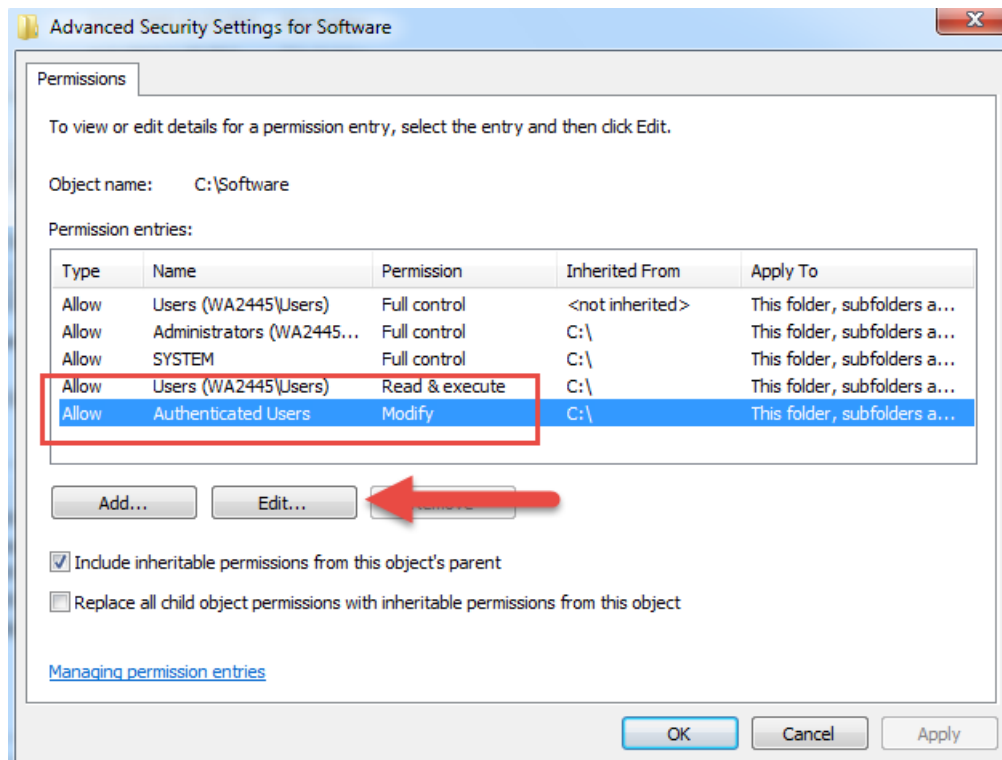


- __7. Click **Change Permissions**.

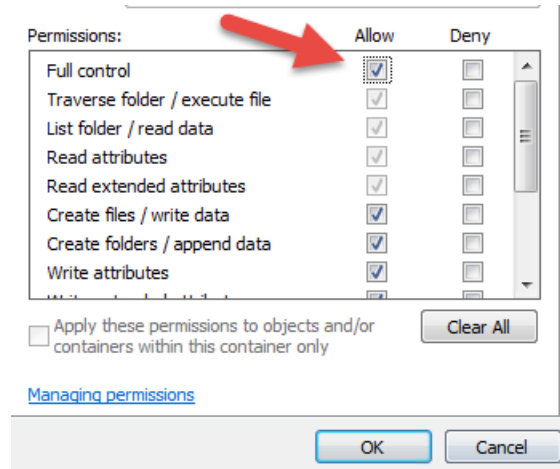


__8. Select the **Authenticated Users** entry and click **Edit...**

Note. If you don't have a domain in your environment the select **Users** instead Authenticated Users.



__9. Check the **Allow** checkbox to the right of **Full Control** and click **OK**.



__10. Select the checkbox for **Replace all child permissions with inheritable permissions from this objects** and then click **OK**.



- Include inheritable permissions from this object's parent
- Replace all child object permissions with inheritable permissions from this object

__11. A *Windows Security* dialog will open. Click **Yes**.

__12. Wait until Windows finishes updating security.

__13. Back in the *Advanced Security Settings* dialog, click **OK**.

__14. Back in the *Properties* dialog, click **OK**.

__15. Do the same steps to the **C:\LabFiles** folder.

__16. Create a folder called **C:\Workspace** if its not already created.

__17. Do the same steps to the **C:\Workspace** folder.

Part 6 - Installing JDK 6 Update 20

__1. Make sure there is no previous Java version already installed on the system. You can check this by using the Windows “Add/Remove Programs” utility. For the best compatibility with the labs it is suggested that all previous versions of Java be uninstalled before proceeding with these instructions. If this is an issue, please contact the setup support person for the course.

__2. From the **C:\Software** directory run the following file:

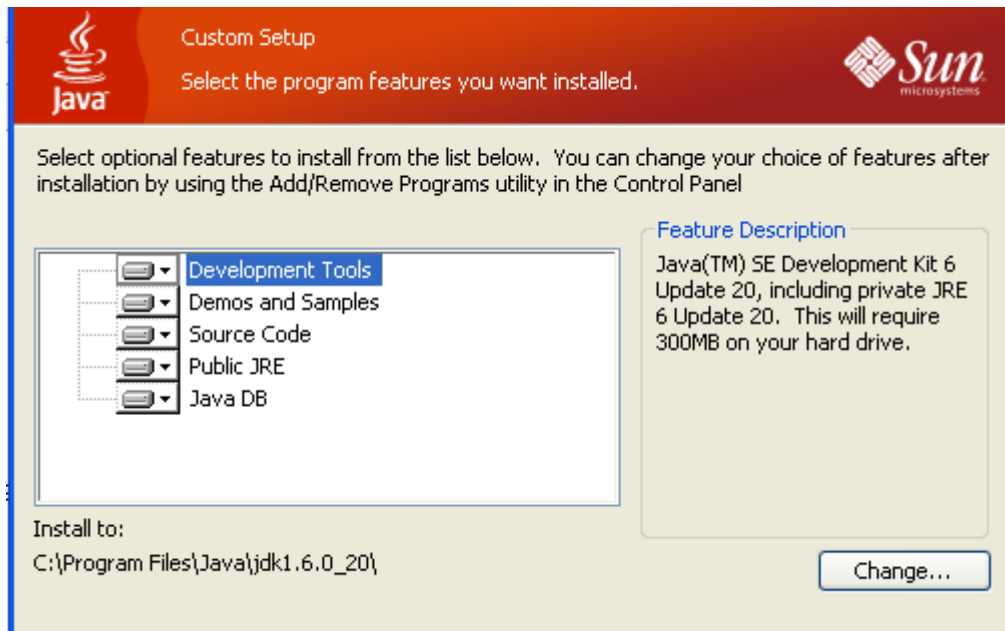
`jdk-6u20-windows-i586.exe`

Note: If using prompted by a security prompt allow the installation to continue.

__3. After a few moments the license agreement will appear. Press the **Accept** button to move to the next step.

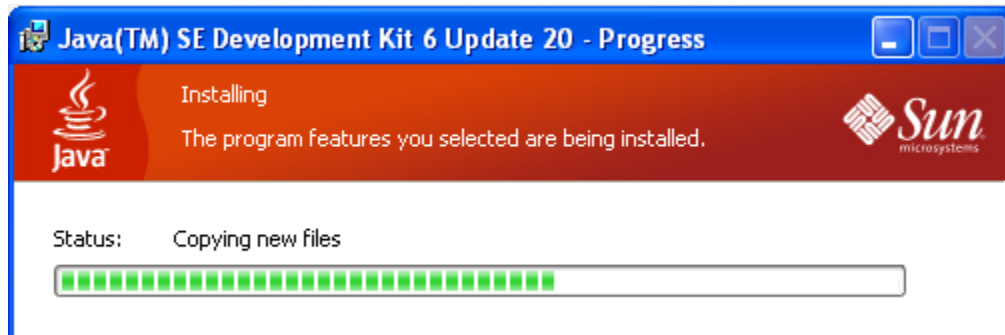


__4. Leave the defaults for installation location and options, and press the **Next** button.

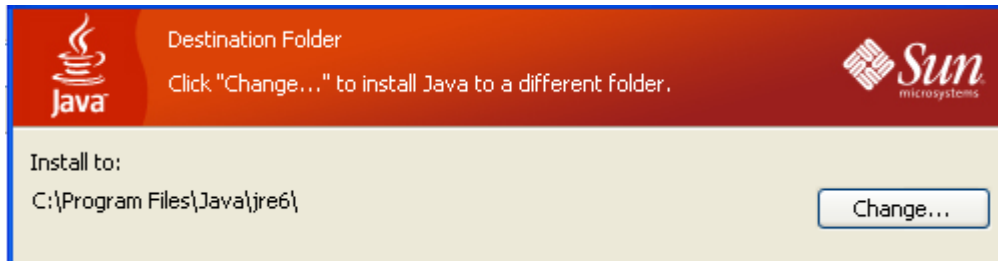


Note: The installation directory may be slightly different. The list of features may not include 'Java DB' but this is OK.

The installation will begin installing files.



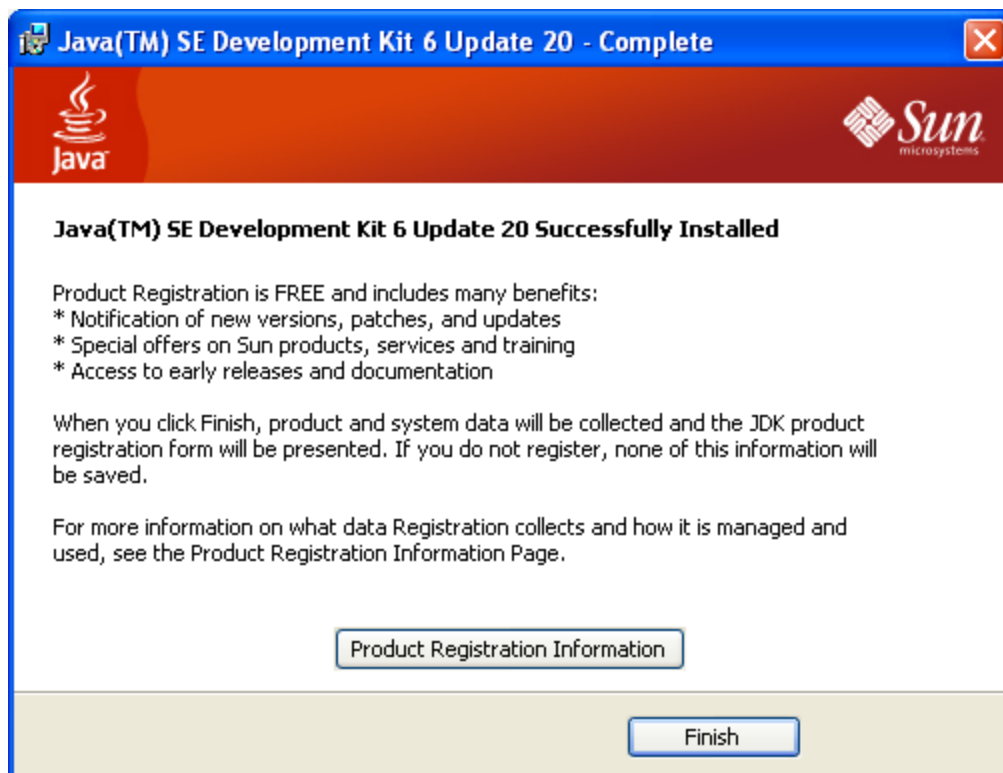
__5. The Destination Folder will appear, leave the default folder and click **Next**.



Note: The installation directory may be slightly different.

Wait until the software is completely installed.

__6. Click **Finish**.



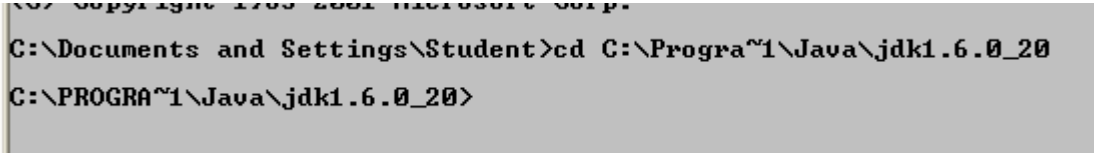
__7. Close any browser that appears asking to register the JDK software.

Set the Environment variables.

__1. Open a Command Prompt. You can do this with '**Start → Programs → Accessories → Command Prompt**'.

__2. Use the 'cd' command to attempt to switch to the following directory. This will verify the presence of a directory used later so make sure you do not get any errors about not being able to “find the path specified”.

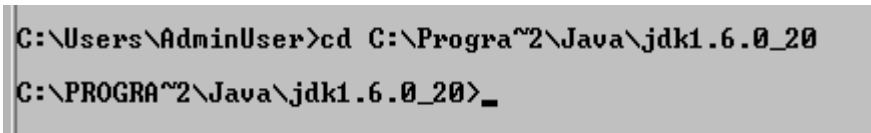
```
cd C:\Progra~1\Java\jdk1.6.0_20
```



```
C:\Documents and Settings\Student>cd C:\Progra~1\Java\jdk1.6.0_20  
C:\PROGRA~1\Java\jdk1.6.0_20>
```

Note: On a Windows Vista/7 setup the installation directory may be slightly different. You may need to use the following directory instead of the one listed above:

```
C:\Progra~2\Java\jdk1.6.0_20
```



```
C:\Users\AdminUser>cd C:\Progra~2\Java\jdk1.6.0_20  
C:\PROGRA~2\Java\jdk1.6.0_20>_
```

Some of the remaining steps will use the slightly different directory.

__3. From **Start > Control Panel**, double click on **System**.

Note: If the "Classic" control panel is not displayed you might need to click the "System and Maintenance" link.

__4. If using Windows Vista click the link for "Advanced System Settings".

__5. Select the **Advanced** tab.

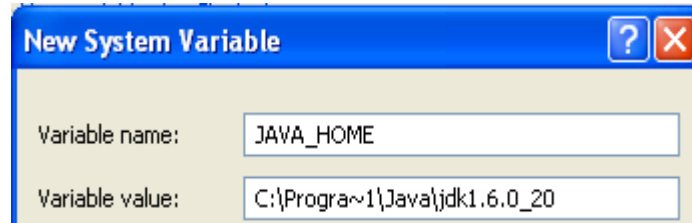
__6. Click the **Environment Variables** button.

__7. Under the System Variables list, click the **New** button.

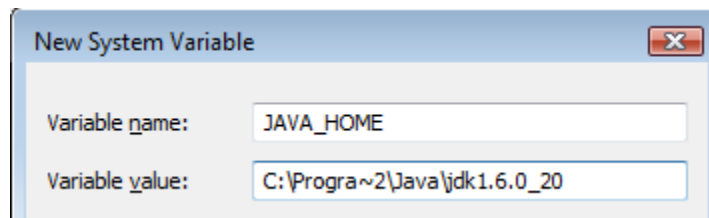
__8. Enter **JAVA_HOME** as Variable name.

__9. As Variable value enter the following. This should be the value you verified in earlier steps.

`C:\Progra~1\Java\jdk1.6.0_20`



Note: If you are using a 64-bit OS use '`C:\Progra~2\Java\jdk1.6.0_20`' instead.

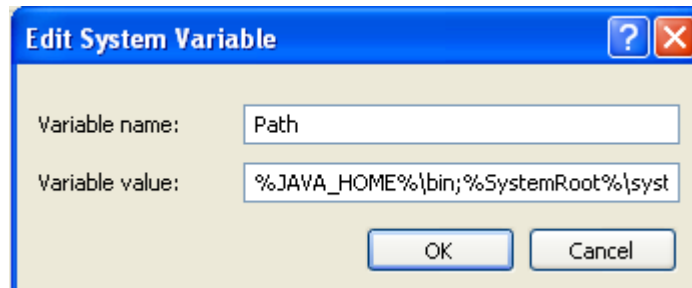


__10. Click **OK** to create the variable.

__11. From the *System Variables* list, select **Path** and click **Edit**.

__12. At the beginning of the line enter the following. Make sure to include the semi-colon on the end:

`%JAVA_HOME%\bin;`



__13. Click **OK**.

__14. Click **OK** to close the *Environment Variables* window.

__15. Click **OK** to close the *System Properties* window.

Part 7 - Verification of JDK 6 Update 20

__1. Open a Windows command prompt. You can do this by selecting '**Start -> Run**', entering '**cmd**', and then pressing the **OK** button. Make sure it is a new command prompt and not one open previously.

__2. Enter the following command:

```
echo %PATH%
```

Make sure you see the Java 'bin' directory listed at the beginning as shown below.

```
C:\Documents and Settings\Student>echo %PATH%  
C:\Program Files\Java\jdk1.6.0_20\bin;C:\WINDOWS\system32;  
m32\WinSxS;C:\Program Files\ESTsoft\ALZin\;C:\Program F
```

__3. Enter the following command:

```
java -version
```

Make sure you see the response shown below.

```
C:\Documents and Settings\Student>java -version  
java version "1.6.0_20"  
Java(TM) SE Runtime Environment (build 1.6.0_20-b02)  
Java HotSpot(TM) Client VM (build 16.3-b01, mixed mode, sharing)  
C:\Documents and Settings\Student>
```

__4. Enter the following command:

```
javac
```

Verify that you get the options to run the Java compiler:

```
C:\Documents and Settings\Student>javac  
Usage: javac <options> <source files>  
where possible options include:  
-g                      Generate all debugging info  
-g:none                 Generate no debugging info  
-g:<lines,vars,source> Generate only some debugging info  
-nowarn                 Generate no warnings  
-verbose                Output messages about what the compil
```

__5. Close the command prompt window and any extra windows that are open.

__6. Restart the computer.

JDK 6 Update 20 is now installed!

Part 8 - Summary

You have successfully installed the software for this course!

If you have any question please contact us by email at support@webagesolutions.com

From US and Canada call: 1-877-812-8887 ext. 26

International call: 416-406-3994 ext. 26