

WA1974 Modeling Business Process Using IBM Process Designer 8.0

Classroom Setup Guide

Web Age Solutions Inc.

Table of Contents

Classroom Requirements.....	3
Part 1 - Minimum Hardware Requirements	3
Part 2 - Minimum Software Requirements	3
Part 3 - Software Provided.....	3
Part 4 - Important Ghosting or Imaging Information.....	4
Part 5 - Instructions.....	4
Part 6 - Installing IBM Process Manager Express 8.0.....	5

Classroom Requirements

Part 1 - Minimum Hardware Requirements

- 2 GHz Pentium IV
- 2GB minimum, 4 GB recommended
- 10 GB in the hard disk
- USB port

Part 2 - Minimum Software Requirements

- Windows XP Service Pack 3, Windows 7, Windows Vista.
- Zip extraction utility
- One of the following web browsers
 - Internet Explorer 7 or 8
 - Latest Chrome or Firefox.
- IBM Business Process Manager Express 8.0 *

* - indicates software provided as part of the courseware.

Part 3 - Software Provided

You will receive the following file:

- **WA1974.ZIP**

All other software listed under Minimum Software Requirements is either commercially licensed software that you must provide or software that is freely available off the Internet.

Part 4 - Important Ghosting or Imaging Information

Some of the software installed for this course will not function after changing the computer hostname. As such, cloning or imaging should not be used on a fully installed system.

You can save time by extracting the contents of the USB memory stick to C:\ on a clean OS install (no other software installed) and then imaging that hard drive. After restoring the image to the other computers and changing the hostnames, you can then install the software on each computer individually by following the instructions that are detailed later in this document.

Part 5 - Instructions

__1. Create a user called **wasadmin** with password **wasadmin** and grant this user administrative access.

__2. Restart the computer and log in as **wasadmin**.

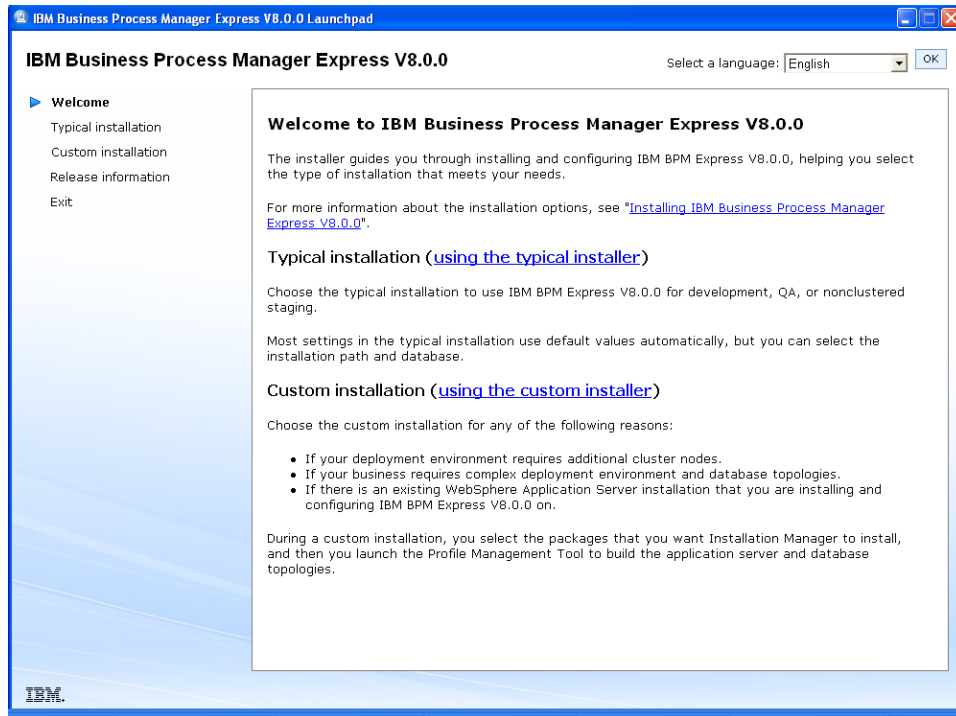
__3. From a USB memory stick, extract the **WA1974.ZIP** file to C:\

__4. Review that the following folders were created:

- **C:\LabFiles**
- **C:\Software\BPM_Exp_V800**

Part 6 - Installing IBM Process Manager Express 8.0

__1. From **C:\Software\BPM_Exp_V800** folder run **launchpad.exe**. If you are using Windows 7 or Vista right click on the file and select **Run as administrator**. You may ask to allow access in Windows 7 and Vista during the installation.



__2. Click **Typical installation**.



__3. Make sure that **Install Process Center** is selected.

__4. Click **Next**.

Install the Process Center

Specify basic information about the Process Center that you want to install.

1. Enter the name of the host:

Hostname:

2. Specify the location for the installation:

Location:

__5. Accept the default host name (it will be different from the screenshot in your case) and the installation directory.

__6. Click **Next**.

Select database configuration

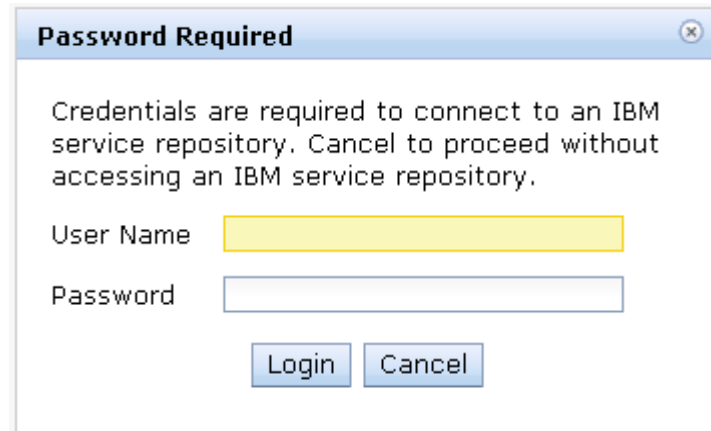
Select a database configuration. If you install an embedded DB2 Express database, the database will be fully configured and ready to use.

Install an embedded DB2 Express database

Use an existing database (DB2, MSSQL, or Oracle)

__7. Select **Install an embedded DB2 Express database**.

__8. Click **Next**.



__9. Click **Cancel**.

Installation summary

The following options will be installed. If this list is not correct, click **B**:

- Installing Process Center to C:\IBM\BPM\v8.0
- Installing Process Designer to C:\IBM\BPM\ProcessDesigner\v8.0
- Installing DB2 Express. Before you proceed, make sure that you c installed.

I have read and accepted the [license agreement](#) and [notices](#)

__10. Check the license agreement.

__11. Click **Install Software**.

Process Designer

Location: C:\IBM\BPM\ProcessDesigner\v8.0

Embedded DB2 Database Server

Username: bpmadmin

Password: *****

Common database name:

Name: CMNDB

Process Center database name:

Name: BPMDB

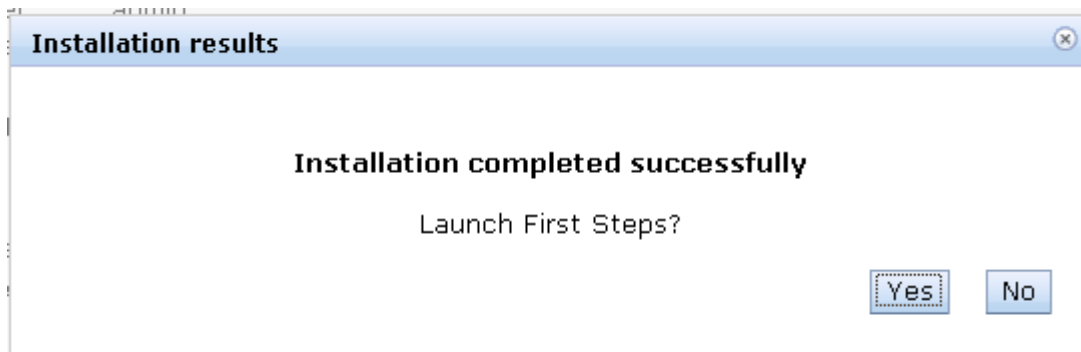
Performance Data Warehouse database name:

Name: PDWDB

Installing IBM Business Process Manager Express V8.0.0...

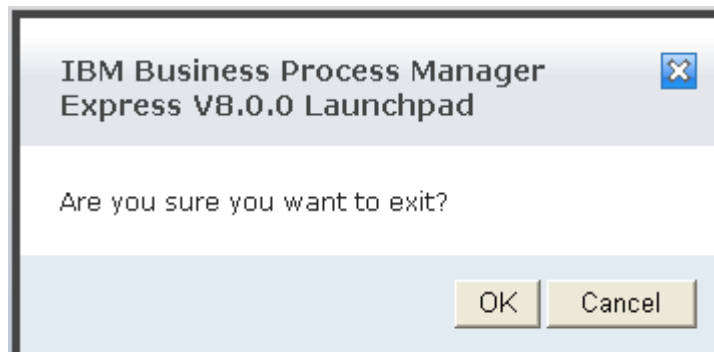


__12. Wait for installation to end.



__13. Make sure installation completes successfully. Click **No** in the dialog.

__14. Click **Exit**.

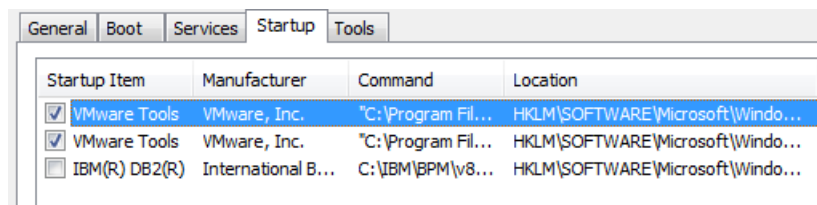


__15. Click **OK**.

__16. To save memory, please stop and disable these Windows services:

- DB2 Management Service (DB2COPY1)
- DB2 Remote Command Server (DB2COPY1)
- DB2DAS – DB2DAS00

__17. Run the command **msconfig**.



__18. Uncheck IBM(R) DB2(R).

__19. Click **OK**.

__20. Click **Restart**.

Installation verification of Business Process Manager Express 8.0

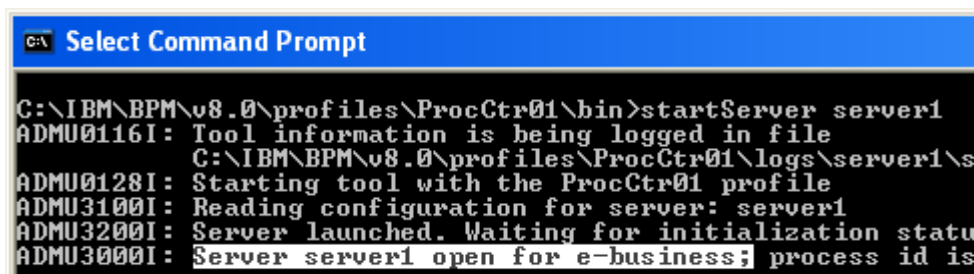
__1. Open a command prompt window.

__2. Change directory to **C:\IBM\BPM\v8.0\profiles\ProcCtr01\bin**

__3. Run this command to start the server.

```
startServer server1
```

__4. After a few minutes, you should see the **Server server1 open for e-business** message.



__5. Stop the server by running this command:

```
stopServer server1 -username admin -password admin
```

__6. After some time the server will stop.

```
C:\IBM\BPM\v8.0\profiles\ProcCtr01\bin>stopServer server1 -username admin -p
assword admin
ADMU0116I: Tool information is being logged in file
          C:\IBM\BPM\v8.0\profiles\ProcCtr01\logs\server1\stopServer.log
ADMU0128I: Starting tool with the ProcCtr01 profile
ADMU3100I: Reading configuration for server: server1
ADMU3201I: Server stop request issued. Waiting for stop status.
ADMU4000I: Server server1 stop completed.

C:\IBM\BPM\v8.0\profiles\ProcCtr01\bin>_
```

__7. Close all windows.