

WA1973 IBM Business Process Manager 8.0 Programming Using IBM Integration Designer

Classroom Setup Guide

Web Age Solutions Inc.

Table of Contents

Part 1 - Minimum Hardware.....	3
Part 2 - Minimum Software.....	3
Part 3 - Software Provided.....	4
Part 4 - Instructions.....	4
Part 5 - Installing IBM Integration Designer 8.0.....	5
Part 6 - Assign privileges in DB2 admin group.....	12
Part 7 - Modify File Permissions.....	14
Part 8 - Verification of the installation of IID 8.0.....	16

Part 1 - Minimum Hardware

- 2 GHz Pentium IV
- 3 GB RAM minimum, 4 GB recommended
- 40 GB in the hard disk
- USB port

Part 2 - Minimum Software

- One of the following Windows versions:
 - Windows 7 (Enterprise, Professional or Ultimate)
 - Windows 7 (Enterprise, R2 Enterprise, or Standard)
 - Windows Vista (Professional, Enterprise, or Ultimate)
- One of the following web browsers (latest versions) :
 - Internet Explorer
 - Firefox
 - Chrome
- Adobe Flash Player 10 or higher
- Adobe Acrobat Reader
- Zip extraction utility
- IBM Integration Designer 8.0 *

* - indicates software provided as part of the courseware.

Part 3 - Software Provided

Name of the required files:

- **WA1973_1.ZIP**
- **WA1973_2.ZIP**
- **WA1973_3.ZIP**

All other software listed under Minimum Software Requirements is either commercially licensed software that you must provide or software that is freely available off the Internet.

Part 4 - Instructions

__1. Extract the 3 the **.ZIP** files directly to **C:**

__2. Review that the following folders were created:

- **C:\LabFiles**
- **C:\Software\IID_8.0**

Part 5 - Installing IBM Integration Designer 8.0



Warning: You cannot use ghosting or disk imaging to install this software. You must install the software on each machine separately. Do not change the computer hostname after this software is installed. Also, do not install this software from a network share. It will only function partially if you do.

Approximately time for installation of IID 8.0: 90 minutes. It is recommended turning off the firewall to avoid messages during the installation.

- __1. Open **C:\Software\IID_8.0**
- __2. Right click **launchpad.exe** and select **Run as Administrator**.
- __3. Confirm any Windows security prompts that are presented during the installation.

The Welcome to WebSphere Integration Designer Installation page will open.

__4. Select **IBM Integration Designer for IBM Business Process Manager Advanced – Process Server**.

__5. **Uncheck** the box for *Start working with IBM Process Center first*.

Welcome to IBM Integration Designer Installation

Follow these steps to install an IBM Integration Designer environment.

Install as administrative user ([Help me decide](#))

The typical installations provide preselected configurations and determine the environment that will be enabled when IBM Integration Designer starts. You can change the configuration selections during installation or run Installation Manager at a later time to make changes. You can also change your environment at a later time in IBM Integration Designer.

Select one of the following typical installations:

- IBM® Integration Designer for IBM Business Process Manager Advanced - Process Server**
Includes an IBM Process Server test environment, and also supports WebSphere Enterprise Service Bus, and optionally IBM Business Monitor.
 - Start working with the IBM Process Center first
- IBM® Integration Designer for WebSphere Enterprise Service Bus**
Includes a WebSphere Enterprise Service Bus test environment, and optionally IBM Business Monitor.
- IBM® Integration Designer for IBM Business Monitor**
Includes an IBM Business Monitor test environment (Windows only).
- IBM® Integration Designer for WebSphere DataPower**
Test environment not included. The installation will work directly with the WebSphere DataPower Appliance.
- IBM® Integration Designer**
Test environment not included.

__6. Click **Install Selected**.

__7. Confirm any Windows security prompts that are presented.

8. The **Install Packages** page will open. Leave all the defaults selected as shown below and click **Next**.

Installation Packages	Status	Vendor
<input checked="" type="checkbox"/> IBM® Installation Manager <input checked="" type="checkbox"/> Version 1.5.2	Will be installed	IBM
<input checked="" type="checkbox"/> IBM WebSphere Application Server Network Deployment <input checked="" type="checkbox"/> Version 8.0.0.3	Will be installed	IBM
<input checked="" type="checkbox"/> IBM® Integration Designer <input checked="" type="checkbox"/> Version 8.0.0.0	Will be installed	IBM
<input type="checkbox"/> IBM® Business Monitor <input type="checkbox"/> Version 8.0.0.0		IBM
<input checked="" type="checkbox"/> IBM® Business Process Manager Advanced - Process Server <input checked="" type="checkbox"/> Version 8.0.0.0	Will be installed	IBM
<input checked="" type="checkbox"/> IBM® DB2 Express 32 bit <input checked="" type="checkbox"/> Version 9.7.0.4	Will be installed	IBM
<input type="checkbox"/> IBM® Forms Designer <input type="checkbox"/> Version 4.0.0.2		IBM
<input type="checkbox"/> IBM® Cognos Business Intelligence 32 bit <input type="checkbox"/> Version 10.1.1.0		IBM

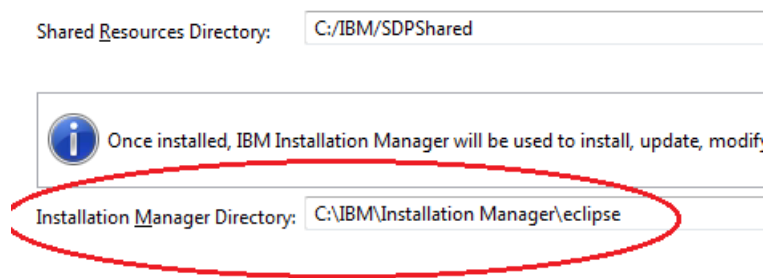
9. Accept the license terms and click **Next**.

I accept the terms in the license agreements
 I do not accept the terms in the license agreements

?

< Back Next >

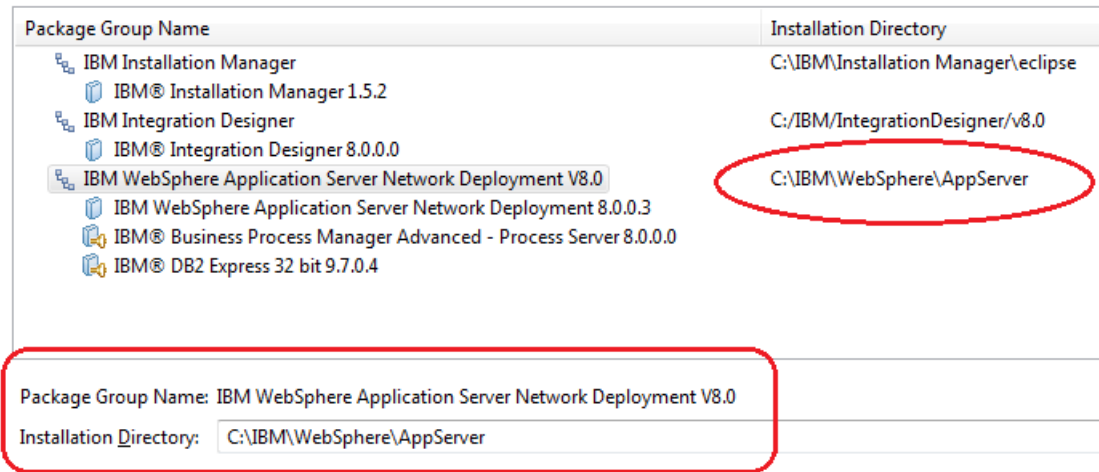
__10. **Modify** the *Installation Manager Directory* to "**C:\IBM\Installation Manager\eclipse**"



Windows Vista/2008/7: It is especially important to modify the installation location on these systems as there may be errors saving to the WebSphere configuration if the product is installed under the 'Program Files' folders.

__11. **Make sure** you changed *Installation Manager Directory* as shown above and then click **Next**.

__12. Select and **Modify** the *Installation Directory of IBM WebSphere Application Server Network Deployment V8.0* to "**C:\IBM\WebSphere\AppServer**"

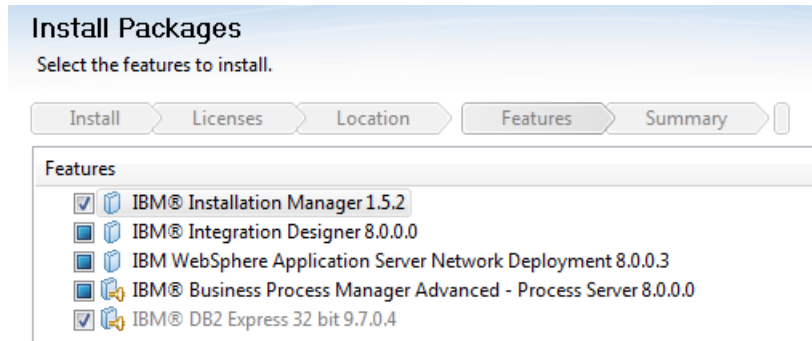


Windows Vista/2008/7: It is especially important to modify the installation location on these systems as there may be errors saving to the WebSphere configuration if the product is installed under the 'Program Files' folders.

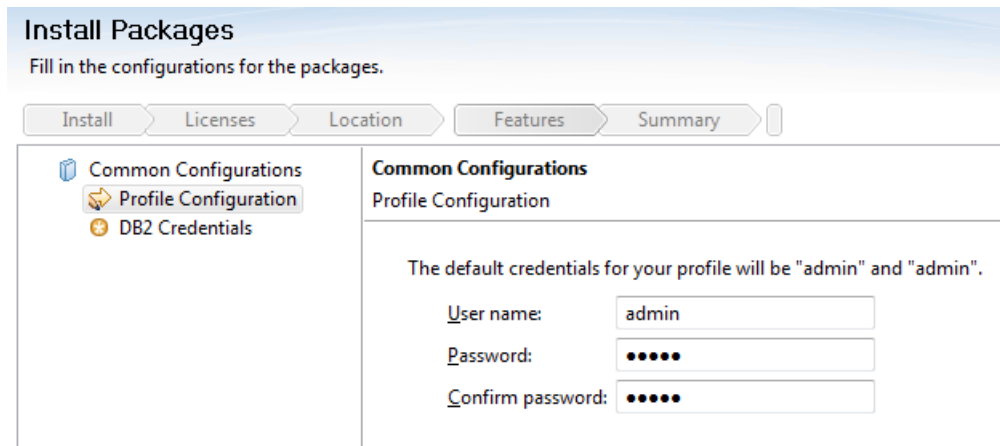
__13. **Make sure** you changed the *Installation Directory of IBM WebSphere Application Server Network Deployment V8.0* as shown above and then click **Next**.

__14. Click **Next** in the Translations Supported page.

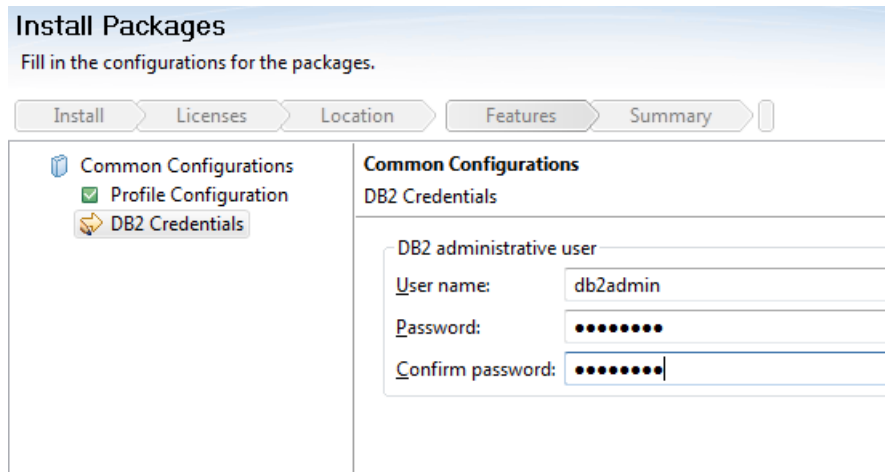
__15. Leave all defaults for *Features to install* and click **Next**.



__16. Leave the default values for the profile configuration and click **Next**.



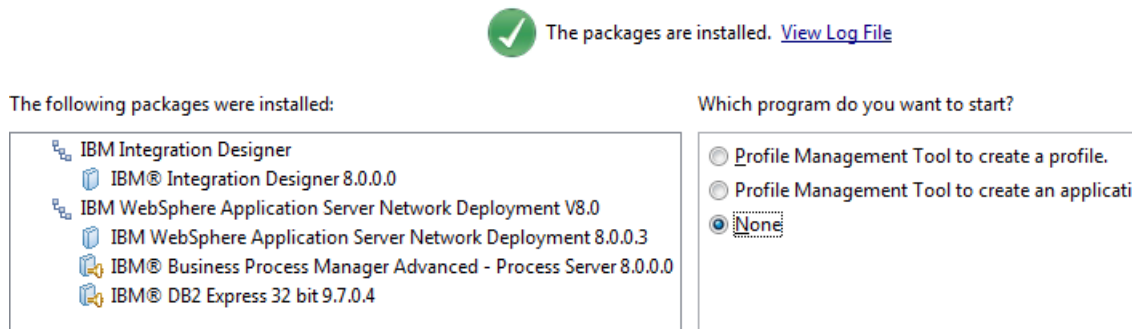
17. **Change** the *user name and password DB2 credentials* to **db2admin** as shown below and click **Next**.



18. Finally click **Install** to start installing the product. This will take some time. Make sure all software will be installed under **C:\IBM**.

Packages	
Packages	Installation Directory
IBM Installation Manager	C:\IBM\Installation Manager\eclipse
IBM® Installation Manager 1.5.2	
IBM Integration Designer	C:\IBM\IntegrationDesigner\v8.0
IBM® Integration Designer 8.0.0.0	
Tools for developing applications without a local server installation	
Email, Flat File, FTP and JDBC IBM WebSphere Adapters	
Monitor Model editor	
IBM WebSphere Application Server Network Deployment V8.0	C:\IBM\WebSphere\AppServer
IBM WebSphere Application Server Network Deployment 8.0.0.3	
EJBDeploy tool for pre-EJB 3.0 modules	
Stand-alone thin clients, resource adapters and embeddable containers	
IBM® Business Process Manager Advanced - Process Server 8.0.0.0	
Business Process Manager Advanced - Client (always installed)	
Business Process Manager Advanced - Process Server	
IBM® DB2 Express 32 bit 9.7.0.4	

__19. Verify that installation completed successfully, then select **None** and click **Finish**.



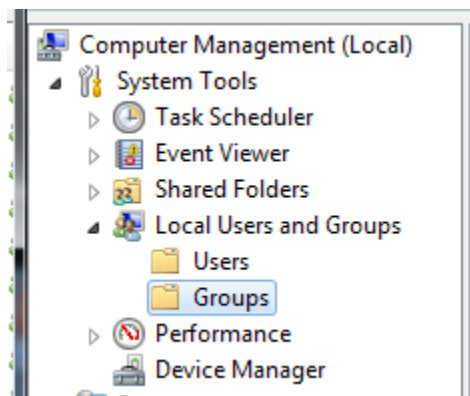
__20. Close the Launchpad.

Part 6 - Assign privileges in DB2 admin group

DB2 was installed with the IBM Business Process Manager installation but only the 'db2admin' user has appropriate privileges. This means that is students login with a different ID, they will have permission problems using DB2.

__1. Open the 'Local Computer Management' utility. Doing this varies by Windows version but generally right clicking on an icon for 'Computer' (in a Windows Explorer window or the Start menu) and selecting 'Manage' will do it.

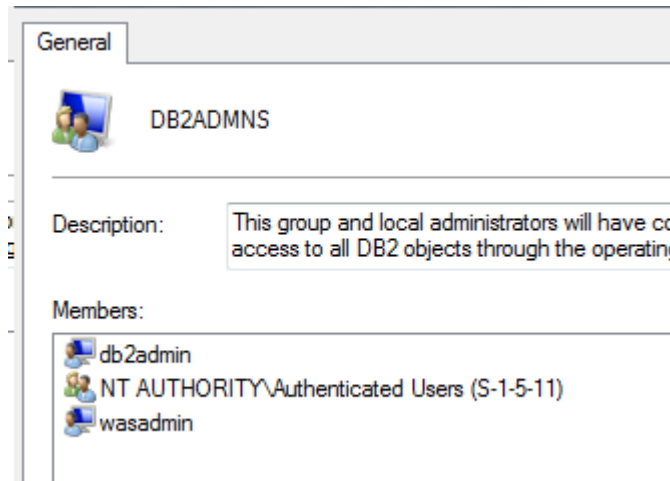
__2. Expand '**Computer Management (Local)** → **System Tools** → **Local Users and Groups** → **Groups**'



__3. With the '**Groups**' folder selected on the left, open the properties of the '**DB2ADMNS**' group on the right. The easiest way is to double click the group.



__4. With the properties of the '**DB2ADMNS**' group open, add either the individual IDs on the computer the students will use to login or all 'Authenticated Users'. The method for doing this will differ depending on Windows version but you should see the configured users/groups added to the 'Members' list of the '**DB2ADMNS**' group.



Note: Users in the 'DB2ADMNS' group have the proper privileges to run the DB2 services. You will get a DB2 error prompt appear when you login if you don't have the proper permission.

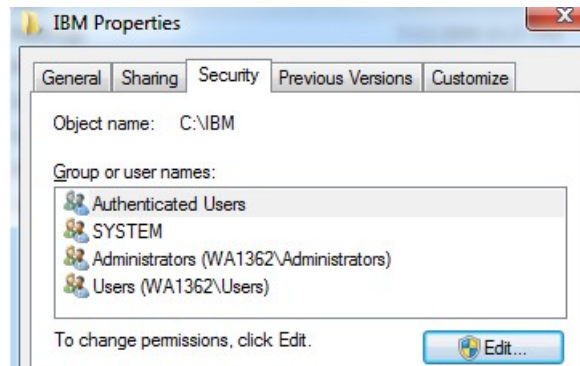
__5. Close any open dialog boxes and the 'Computer Management' window.

Part 7 - Modify File Permissions

Note: These steps allow full access to the directories used by the WebSphere install. This is required so that students can start the WebSphere server from within development tools and will allow the WebSphere server to write to the log files. Without these steps the students won't be able to start the WebSphere server and won't be able to do the labs.

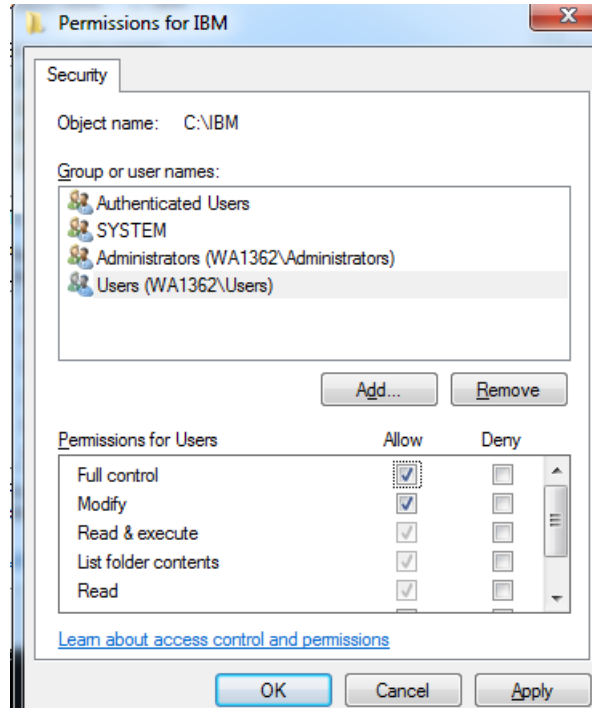
These steps allow full access to the directories used by the WebSphere install. The steps to accomplish this may vary by Windows version but the goal is the same, granting access to all users to the WebSphere install. If you have questions about how to accomplish this contact the setup support person for the class.

- __1. Right click C:\IBM and select **Properties**.
- __2. Click the **Security** tab.
- __3. Click **Edit**.



__4. Select the **Users** entry (add one if not present).

__5. Check **Full Control** permission option and click **OK**.



__6. Wait until the process finishes updating security, and close all windows when is done.

__7. Now give full privileges to **C:\LabFiles** to all users as you did it to the IBM folder.

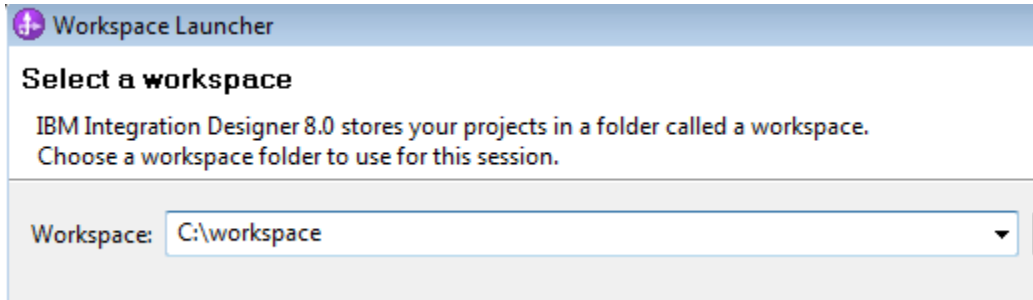
__8. Restart the computer and login with the user that the student will use to do the Labs.

__9. Make sure the user has full access to **C:\LabFiles** as well as **C:\IBM** folders.

Part 8 - Verification of the installation of IID 8.0

__1. From start menu select: **All Programs > IBM > IBM Integration Designer -> IBM Integration Designer 8.0**

__2. Change the workspace to **C:\workspace** and click **OK**.

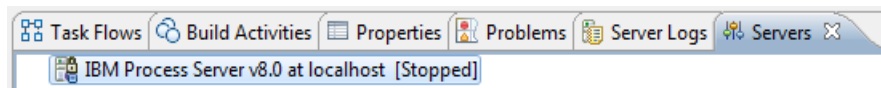


__3. If you are prompted by the Windows firewall about blocking a program unblock it.

The Getting started page will open.

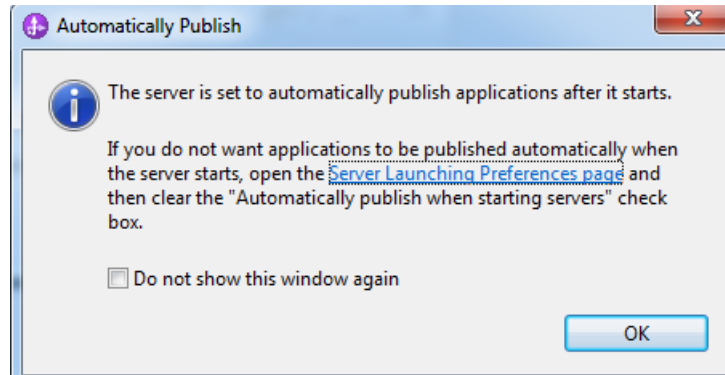


__4. Select the **Servers** tab.

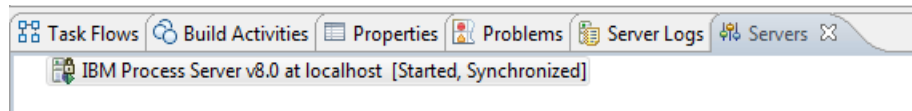


__5. Right click the **IBM Process Server v8.0 at local host** server and select **Start**. You will see at the bottom messages that the server is starting, wait patiently, the first time the server is started launch many services.

__6. Click **OK** if the automatically publish message open.

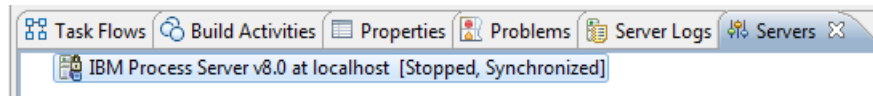


__7. Make sure the Server status changed to [**Started, Synchronized**].



__8. Now, right click the server and select **Stop**.

Server status will change to [**Stopped, Synchronized**].



__9. Exit the product by selecting **File** → **Exit** from the menu bar.

__10. Close all the open files.

Congratulations! The product has successfully been installed.

Congratulations. The installation for this course has been completed.