

WA1929 Cloud Essentials for Architects using OpenStack

Classroom Setup Guide

Web Age Solutions Inc.

Table of Contents

Part 1 - Minimum Hardware Requirements	3
Part 2 - Minimum Software Requirements	3
Part 3 - Software Provided.....	4
Part 4 - Preparation.....	4
Part 5 - Installing the VMWare image.....	5

Part 1 - Minimum Hardware Requirements

- 64-bit x86 CPU that supports hardware virtualization (Intel-VT or AMD-V).
- Hardware virtualization enabled in the BIOS.
- Minimum 3.0 GB memory.
- 20 GB Hard Disk space.
- USB port.

Part 2 - Minimum Software Requirements

- Windows XP SP2 or later (host OS).
- VMware Player 4.0 or later.

Part 3 - Software Provided

You will receive the following file:

- VM_WA1826.ZIP

All other software listed under Minimum Software Requirements is either commercially licensed software that you must provide or software that is freely available off the Internet.

Part 4 - Preparation

__1. Extract the **.ZIP** file to **C:**

__2. Review that the following folders were created:

- **C:\VM_WA1826**

Part 5 - Installing the VMWare image

__1. Open a file browser and find the VMware player executable file located in **C:\VM_WA1826** folder.

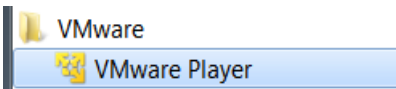
Note. If you don't find the VMware player executable file in this folder then download it from the VMware website using the following link:

<http://www.vmware.com/index.html>

__2. Run the VMware player executable file and accept all the defaults during the installation.

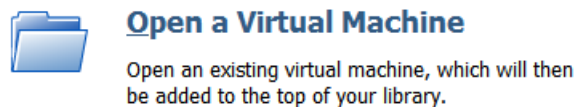
__3. Restart the computer.

__1. From the Start menu, select **All Programs > VMWare > VMWare Player**.

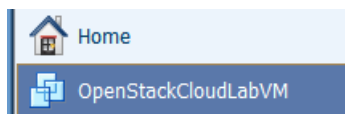


__2. If prompted to download a new version of VMWare player decline the update.

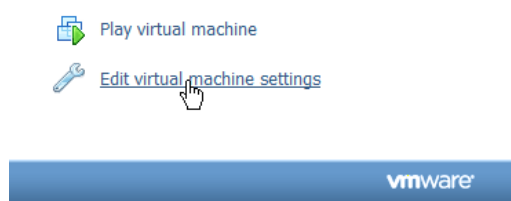
__3. Click **Open a Virtual Machine**.



__4. Select the **OpenStackCloudLabVM.vmx** file located under the **C:\VM_WA1826** folder. The **OpenStackCloudLabVM** will appear on the list of machines.



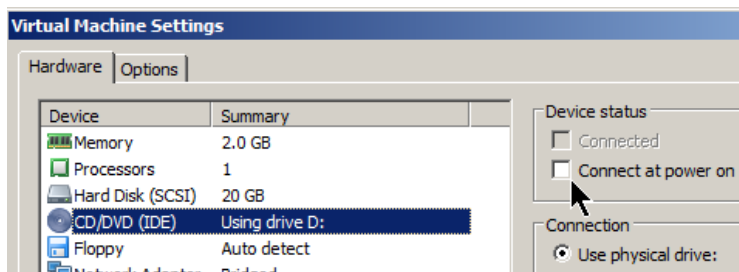
__5. Click **Edit virtual machine settings** at the bottom of the VMWare Player



The *Virtual Machine Settings* screen opens.

__6. In the **Hardware** tab (opened by default), click **CD/DVD (IDE) Device**

__7. Uncheck the **Connect at power on** (or keep it clear if it was unchecked already) *Device status*



__8. Click **Floppy**

__9. Uncheck the **Connect at power on** (or keep it clear if it was unchecked already)

__10. Click **Sound Card**

__11. Uncheck the **Connect at power on** (or keep it clear if it was unchecked already)

__12. Click **Printer**

__13. Uncheck the **Connect at power on** (or keep it clear if it was unchecked already)

__14. Click **OK** at the bottom of the *Virtual Machine Settings* Screen to close it



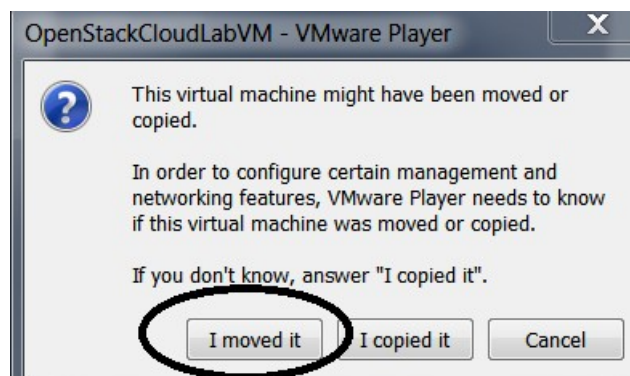
__15. Select the virtual machine and click **Play virtual machine**

OpenStackCloudLabVM

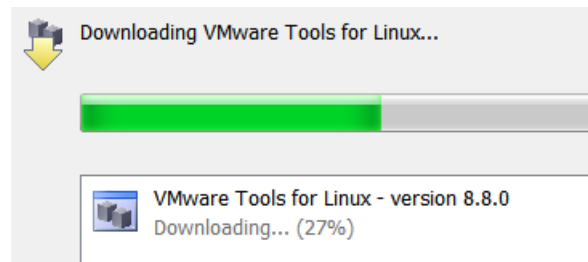
State: Powered Off
OS: Ubuntu 64-bit
Version: Workstation 8.0 virtual machine
RAM: 2 GB

 Play virtual machine

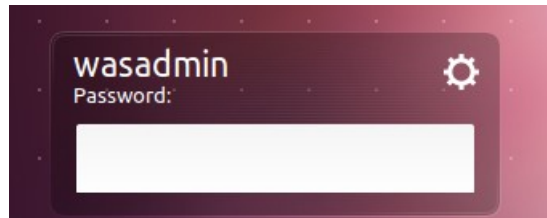
__16. Click "**I moved it**"



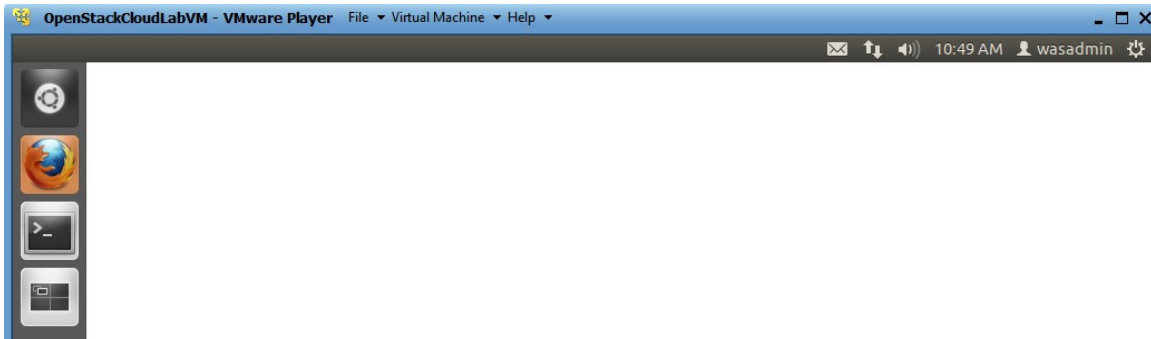
__17. If asked to install the Tools, do so - it may take a minute or so to install



__18. In the login screen that opens, enter **wasadmin** as password and hit **Enter**



__19. The image will open. Note that this is an Ubuntu box

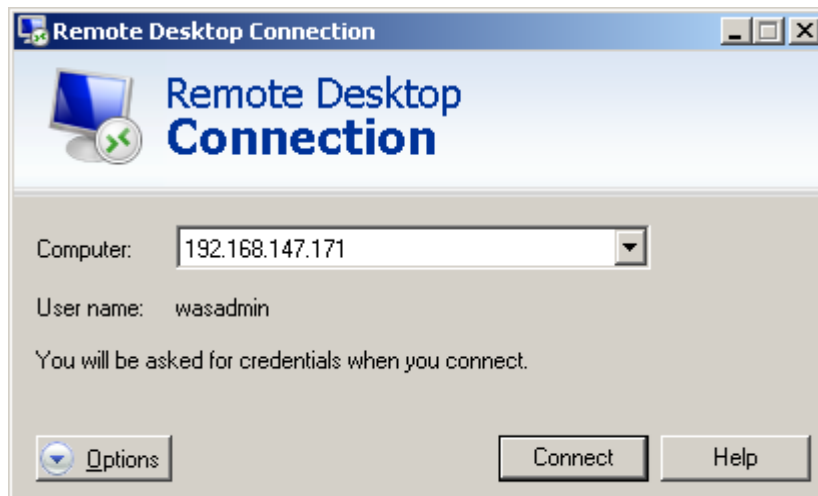


Connecting remotely (Optional)

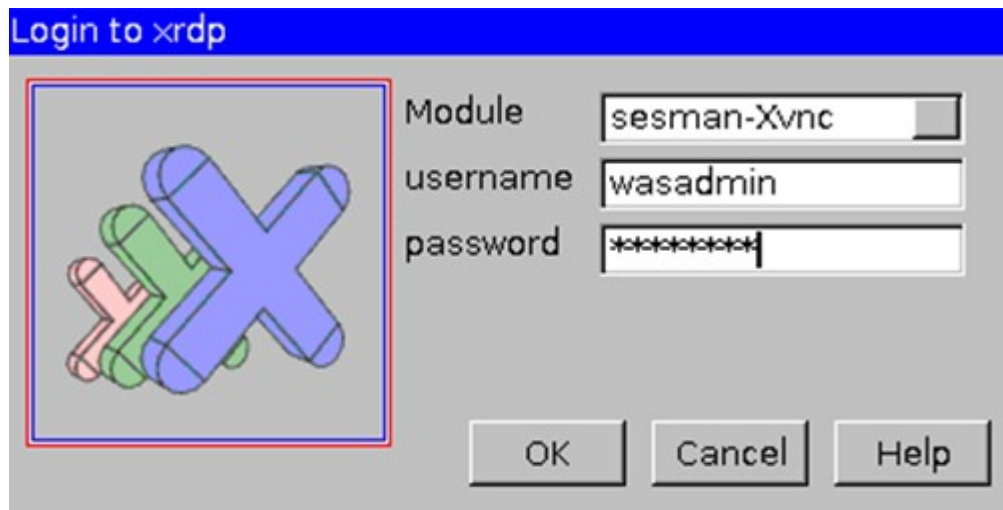
If the students will be connecting remotely to this machine then you need to install in the students machine Remote desktop connection.

There are many ways to provide the remote information, here we are providing information to access using an static IP. You will need to contact the infrastructure department to configure your network and provide the right information to the students to connect into this machine.

__20. Open remote desktop connection and enter the IP address.



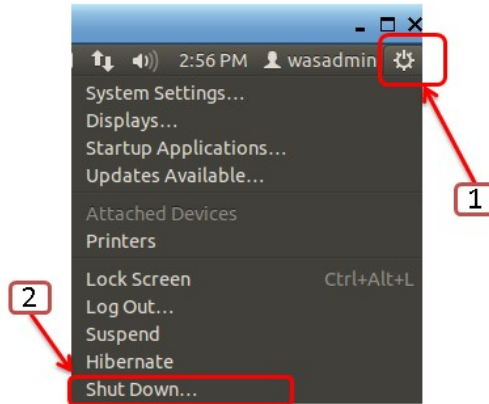
__21. In the login screen enter **wasadmin** for username and password and click **OK**.



The session will open, note that not all the options will be shown as when you are accessing directly in the image.

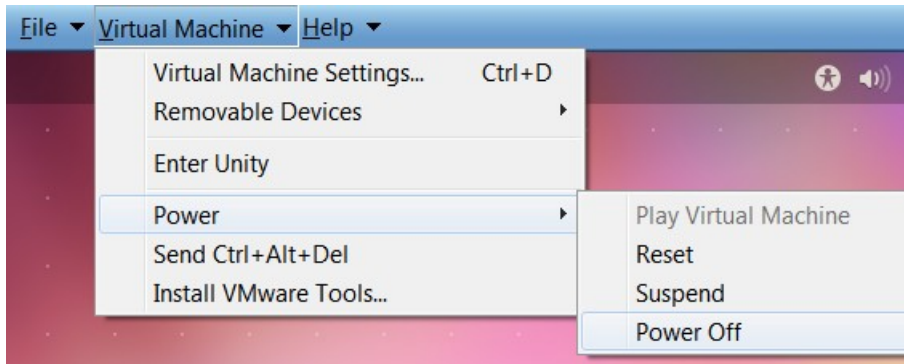
Shutting down the VMWare image.

__22. In the desktop, click the cog icon in the top right-hand corner and select **Shut Down ...** from the drop-down menu.

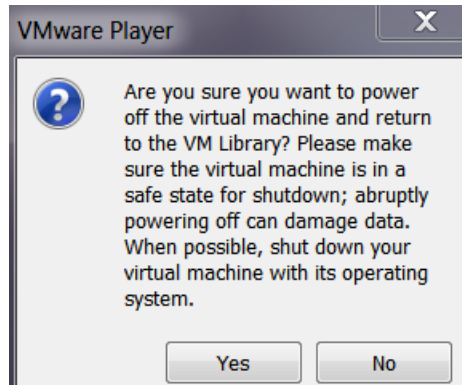


__23. Confirm the Shut Down request to close all programs and shut down the computer (this operation, actually, takes you to the Ubuntu's login screen).

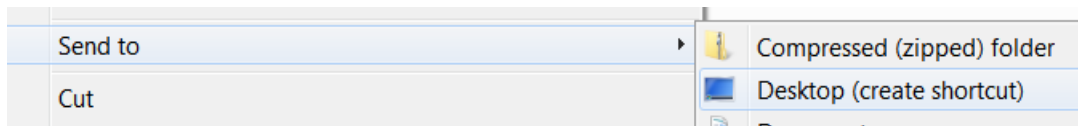
__24. From the menu, select **Virtual Machine > Power > Power Off**.



__25. Click **Yes** to shut down the image.



__26. Navigate to **C:\VM_WA1826**, right click on **OpenStackCloudLabVM.vmx** and select **Send to > Desktop (create shortcut)**



__27. Verify a shortcut has been created under desktop.



The installation of WA1826 Designing Cloud Computing Solutions has been completed.