

**WA1916 WebSphere ESB 7.0 Programming
Using WID**

Classroom Setup Guide

Web Age Solutions Inc.

Table of Contents

Part 1 - Minimum Hardware Requirements	3
Part 2 - Minimum Software Requirements	4
Part 3 - Software Provided.....	5
Part 4 - Important Ghosting or Imaging Information.....	6
Part 5 - Instructions.....	7
Part 6 - Installing WebSphere Integration Developer v7.0.....	8
Part 7 - Verification of the installation of WID 7.0.....	15

Part 1 - Minimum Hardware Requirements

- 1000 Mhz Pentium III
- 1.5 GB RAM minimum, 2 GB recommended
- 10 GB free on the C drive
- Network connectivity to the internet
- USB Port

Part 2 - Minimum Software Requirements

- Microsoft Windows 2000 SP4 or Windows XP (SP1 or SP2)
- Adobe Acrobat Reader 6.0
- Winzip 8
- Internet Explorer 6.0
- WebSphere Integration Developer 7.0 *

* - indicates software provided as part of the courseware.

Part 3 - Software Provided

Number of USB memory sticks that you will receive: **3**

Name of the files containing in the memory sticks (one file per memory stick):

- **WA1916_1.ZIP**
- **WA1916_2.ZIP**
- **WA1916_3.ZIP**

All other software listed under Minimum Software Requirements is either commercially licensed software that you must provide or software that is freely available off the Internet.

Part 4 - Important Ghosting or Imaging Information

Some of the software installed for this course will not function after changing the computer hostname. As such, cloning or imaging should not be used on a fully installed system.

You can save time by extracting the contents of the USB memory stick to C:\ on a clean OS install (no other software installed) and then imaging that hard drive. After restoring the image to the other computers and changing the hostnames, you can then install the software on each computer individually by following the instructions that are detailed later in this document.

Part 5 - Instructions

__1. From a USB memory stick, extract the **WA1916_1.ZIP** file to **C:**

__2. From a USB memory stick, extract the **WA1916_2.ZIP** file to **C:**

__3. From a USB memory stick, extract the **WA1916_3.ZIP** file to **C:**

__4. Review that the following folders were created:

- **C:\LabFiles**
- **C:\Software**
- **C:\Software\WID7.0**

Part 6 - Installing WebSphere Integration Developer v7.0



Warning: You cannot use ghosting or disk imaging to install this software. You must install the software on each machine separately. Do not change the computer hostname after this software is installed. Also, do not install this software from a network share. It will only function partially if you do.

Approximately time for installation of WID 7.0: 90 minutes

__1. From C:\Software\WID7.0 run **launchpad.exe**

The Welcome to WebSphere Integration Developer Installation page will open.

Welcome to WebSphere Integration Developer Installation

The installation requires that you first install WebSphere Integration Developer and the environment.

The default installation requires 6.5 GB of disk space.

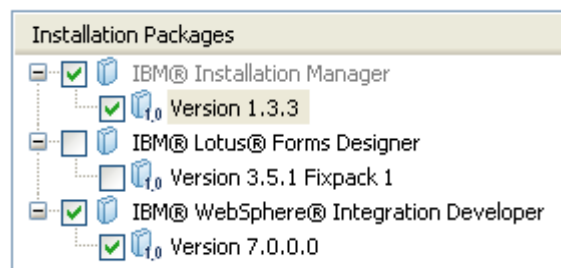
Note: You can install using this launchpad only as an administrative or root user. To install as a root user, see [these instructions](#).

Complete the following steps in order:

1.  [Install IBM® WebSphere® Integration Developer V7.0](#)
Installs WebSphere Integration Developer.
2.  [Install WebSphere Application Server](#)

__2. Click on **Install IBM WebSphere Integration Developer V7.0**

The **Install Packages** page will open.



__3. Leave all the defaults selected as shown above and click **Next**.

__4. Accept the license terms and click **Next**.

_____ "IBM" is Tr

I accept the terms in the license agreements

I do not accept the terms in the license agreements

__5. Leave the default directories for the installation and click **Next**.


Install Licenses **Location** Features Summary

When you install packages, files are stored in two locations:

- 1) The shared resources directory - resources that can be shared by multiple packages.
- 2) The installation directory - any resources that are unique to the package that you are in

Important: You can only select the shared resources directory the first time you install a p; select the drive with the most available space because it must have adequate space for th

Shared Resources Directory: C:\Program Files\IBM\SDPShared

 Once installed, IBM Installation Manager will be used to install, update, modify, manage ar

Installation Manager Directory: C:\Program Files\IBM\Installation Manager\eclipse

__6. Leave the default directories for the installation of **WID7** and click **Next**.

Create a new package group

Package Group Name	Installation Directory
IBM WebSphere Integration Developer	C:\Program Files\IBM\WID7

Package Group Name: IBM WebSphere Integration Developer

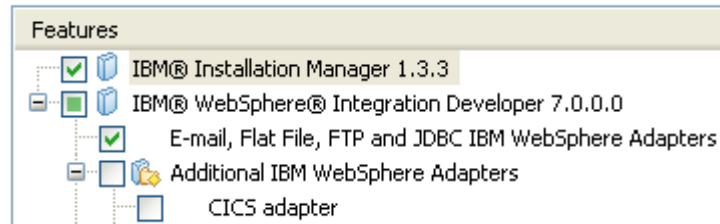
Installation Directory: C:\Program Files\IBM\WID7

__7. Leave the default language and click **Next**.

Translations

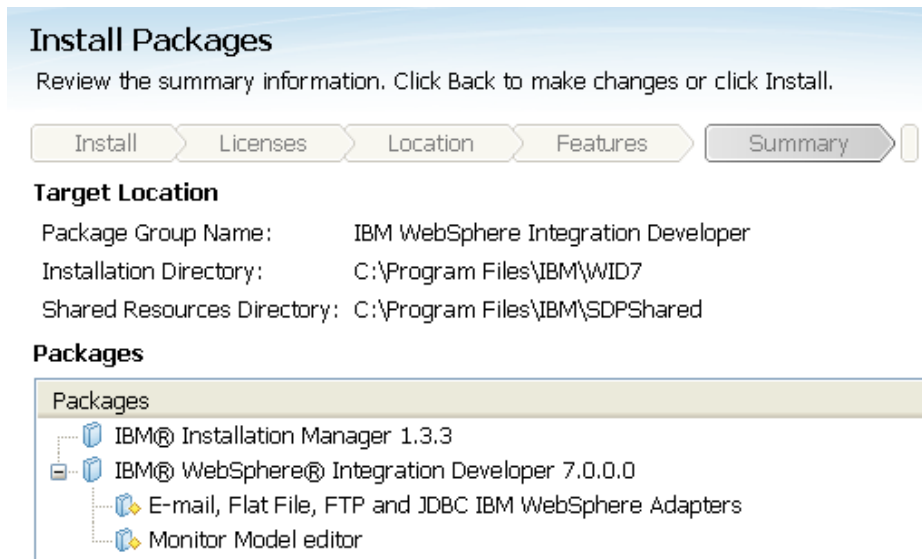
- English
- Hungarian
- Russian

The features to install page will open.

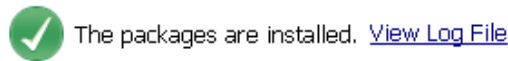


__8. Click **Next**.

__9. Click **Install** to start installing the product. This will take some time.



__10. Verify that installation completed successfully.



The following package was installed into package group IBM WebSphere Integration Developer:

- IBM® WebSphere® Integration Developer
 - E-mail, Flat File, FTP and JDBC IBM WebSphere Adapters
 - Monitor Model editor

__11. Click **Finish**.

__12. Back in the launchpad window, click **Install WebSphere Application Server**

1. [Install IBM® WebSphere® Integration Developer V7.0](#)

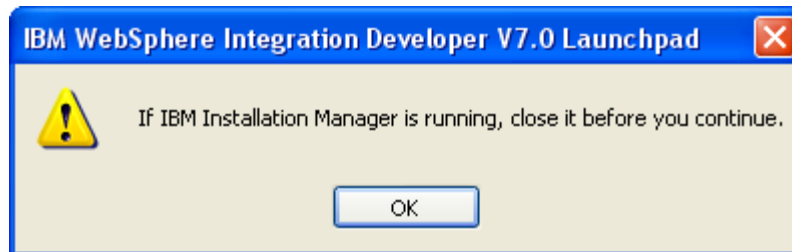
Installs WebSphere Integration Developer.

2. [Install WebSphere Application Server](#)

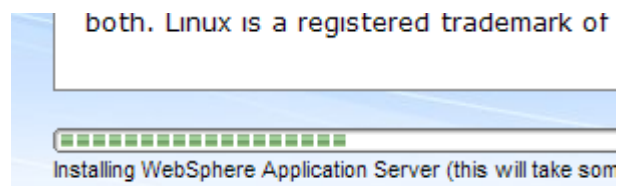
WebSphere test environment installation first requires that V installed.

3. [Install the WebSphere test environment](#)

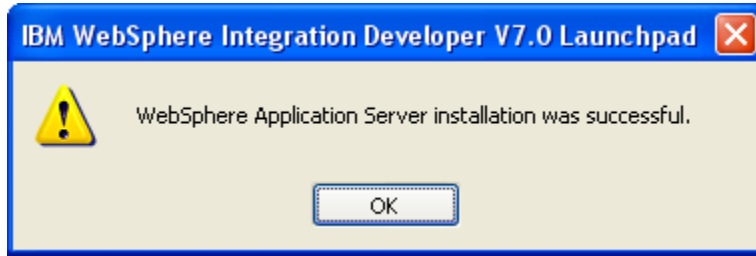
__13. A message that the Installation Manager is running will open, click **OK**.



__14. Look at the bottom of the screen. A green bar will show the progress of the installation. Wait for installation to finish. It takes about 40 minutes to complete.



__15. Click **OK** when you get this message.

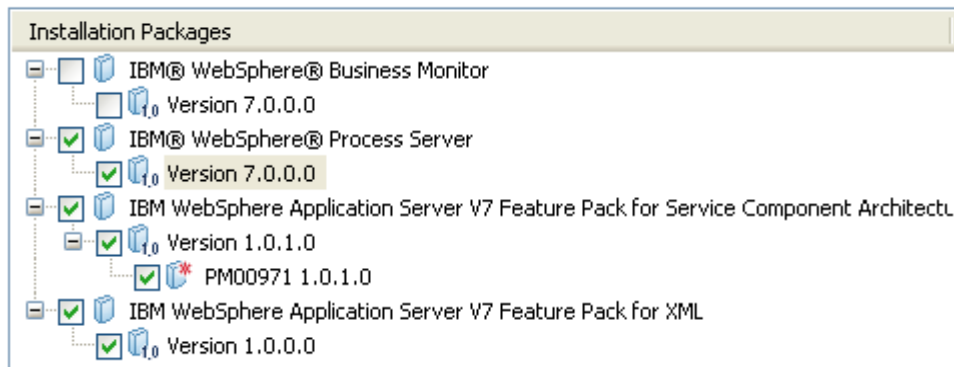


__16. Now click **Install the WebSphere test environment**.

3.  [Install the WebSphere test environment](#)

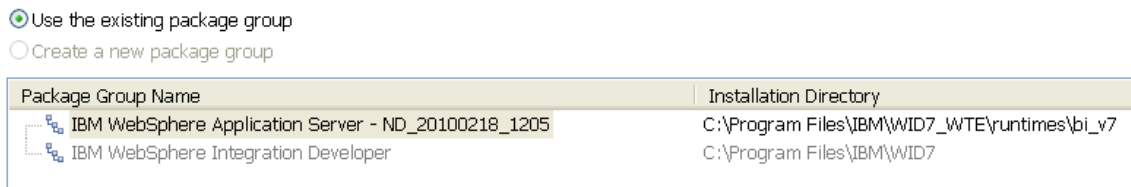
Completes the installation of the test environment.

__17. Installation manager will open. Leave the defaults as shown below and click **Next**.



__18. Accept license agreement and click **Next**.

__19. In the Packages page, leave the defaults and click **Next**.



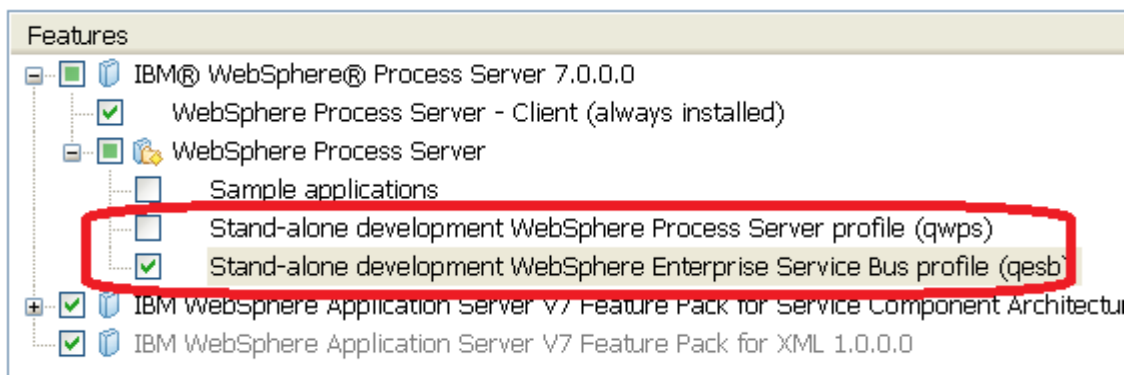
__20. In the Features page, expand **IBM WebSphere Process Server 7.0.0.0 > WebSphere Process Server**.



__21. Uncheck **Stand-alone development WebSphere Process Server Profile (qwps)**.

__22. Check **Stand-alone development WebSphere Enterprise Service Bus Profile (qesb)**.

Verify that the screen matches the image below.



__23. Click **Next**.

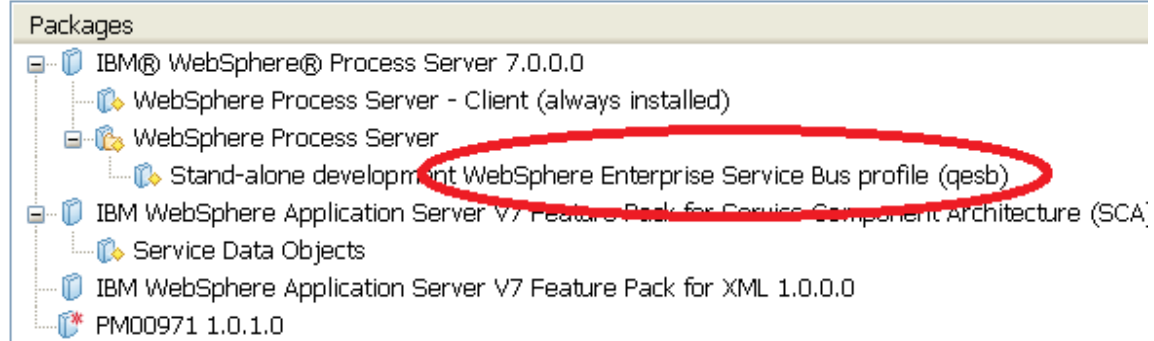
__24. Leave the **User name** and **Password** as **admin** in the Common configurations page as shown below and click **Next**.

The default credentials for your profile will be "admin" and "admin".

User name:	<input type="text" value="admin"/>
Password:	<input type="password" value="•••••"/>
Confirm password:	<input type="password" value="•••••"/>

The Summary page will open.

Packages



__25. Verify that Enterprise Service Bus profile (**qesb**) package is selected.

__26. Click **Install**.

Installation will start, look at the bottom for the progress.

► Repository Information

Installing.



__27. At the end of the installation, make sure that you see this page:



The packages are installed. [View Log File](#)

Profile Management Tool to augment existing profiles or creating, deleting, and augmenting profiles. Additionally, Netwo

__28. Select **None** in the right pane.

Which package do you want to start?

- Profile Management Tool
- None

__29. Click **Finish**.

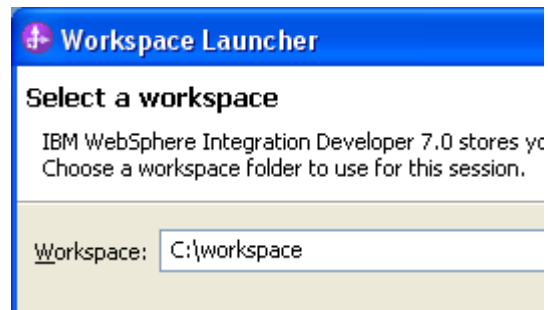
__30. Close the Launchpad.

Part 7 - Verification of the installation of WID 7.0

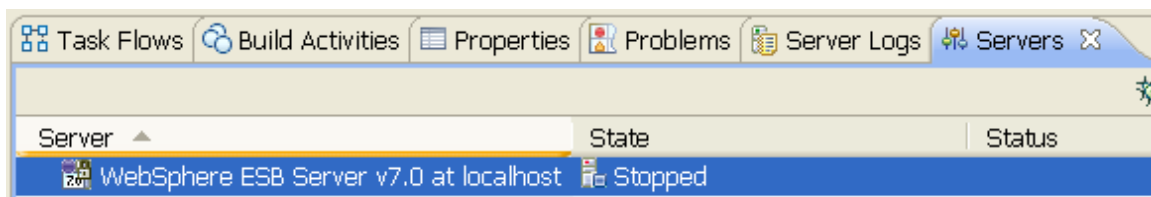
- __1. Go to directory **C:\Program Files\IBM\WID7_WTE\runtimes\bi_v7\logs\install**.
- __2. Open **log.txt**.
- __3. Go to the end of the file. Make sure that you see the message: **INSTCONFSUCCESS** as shown below:

```
(Feb 9, 2010 5:44:55 AM), Process,  
com.ibm.ws.install.ni.ismp.actions.ISMPLog:  
msg1, INSTCONFSUCCESS
```

- __4. Close the file.
- __5. Launch WID using the following Windows start menu: **Start->All Programs ->IBM WebSphere Integration Developer->IBM WebSphere Integration Developer V7.0->WebSphere Integration Developer V7.0**.
- __6. Change the workspace to **C:\workspace** as shown below.

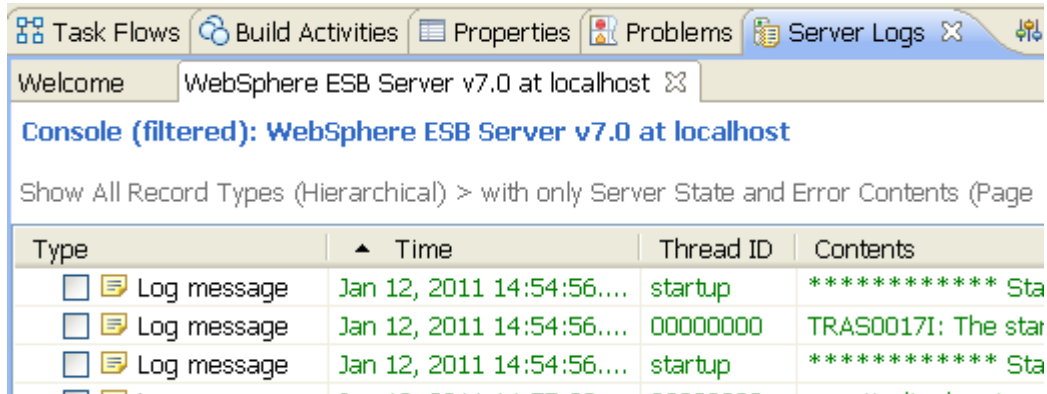


- __7. Click **OK**.
- __8. At the bottom of the screen, click on the **Servers** tab.

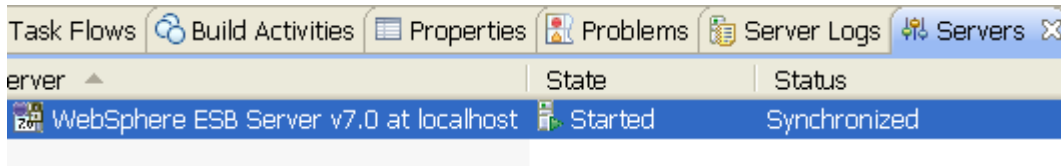


- __9. Right click the **WebSphere ESB Server v7.0** and select **Start**.

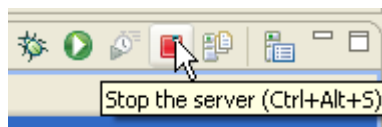
__10. The **Server Logs** view will open showing some messages during the start.



__11. After the server finishes starting, which can take several minutes, the **Servers** view will show the state of the server as **Started** and its status as **Synchronized**.



__12. Select the server and stop it by clicking on the **Stop the server** button.



__13. Wait for the server to stop. Stopping the server is much faster than starting the server. Once the server is stopped, the state will change to **Stopped**.

__14. Exit WID by choosing **File->Exit** from the menu bar.

__15. Close all the open files.

Congratulations! The product has successfully been installed.