

# **WA1839 WebLogic Server 11gR1 Administration**

## **Classroom Setup Guide**

**Web Age Solutions Inc.**

## Table of Contents

Part 1 - Minimum Hardware Requirements .....	3
Part 2 - Minimum Software Requirements .....	3
Part 3 - Software Provided.....	3
Part 4 - Important Ghosting or Imaging Information.....	4
Part 5 - Instructions.....	4
Part 6 - Installing Apache HTTP Server 2.2.14.....	5
Part 7 - Installing MySQL 5.1.30.....	8

## Part 1 - Minimum Hardware Requirements

- 2 GHz Pentium 4
- 2 GB RAM minimum, 3 GB recommended
- 8 GB disk space
- Must have LAN connectivity
- USB port

## Part 2 - Minimum Software Requirements

- Microsoft Windows XP SP2 or Windows Vista SP1 (Business, Enterprise, or Ultimate)
- Internet Explorer 6.0
- Zip file utility
- Apache HTTP Server v2.2 \*
- WebLogic Server 11g \*
- MySQL JDBC driver \*
- MySQL Server 5.1 \*

\* - indicates software provided as part of the courseware.

## Part 3 - Software Provided

You will receive the following file:

- **WA1839.ZIP**

All other software listed under Minimum Software Requirements is either commercially licensed software that you must provide or software that is freely available off the Internet.

## Part 4 - Important Ghosting or Imaging Information

Some of the software installed for this course will not function after changing the computer hostname. As such, cloning or imaging should not be used on a fully installed system.

You can save time by extracting the contents of the USB memory stick to C:\ on a clean OS install (no other software installed) and then imaging that hard drive. After restoring the image to the other computers and changing the hostnames, you can then install the software on each computer individually by following the instructions that are detailed later in this document.

## Part 5 - Instructions

\_\_1. Ensure that a user that is a local administrator is available for the students to use during the class and create one if needed.

\_\_2. Uninstall any installation of WebLogic or the JDK already on the system.

\_\_3. From the USB memory stick or DVD, extract the **WA1839.ZIP** file to C:\

\_\_4. Review that the following folders were created:

- **C:\LabFiles**
- **C:\Software\**

\_\_5. Review that the following files were created:

- **C:\Software\Apache\apache\_2.2.14-win32-x86-no\_ssl.msi**
- **C:\Software\mysql-connector-java-5.1.7-bin.jar**
- **C:\Software\mysql-essential-5.1.30-win32.msi**
- **C:\Software\wls1032\_win32.exe**

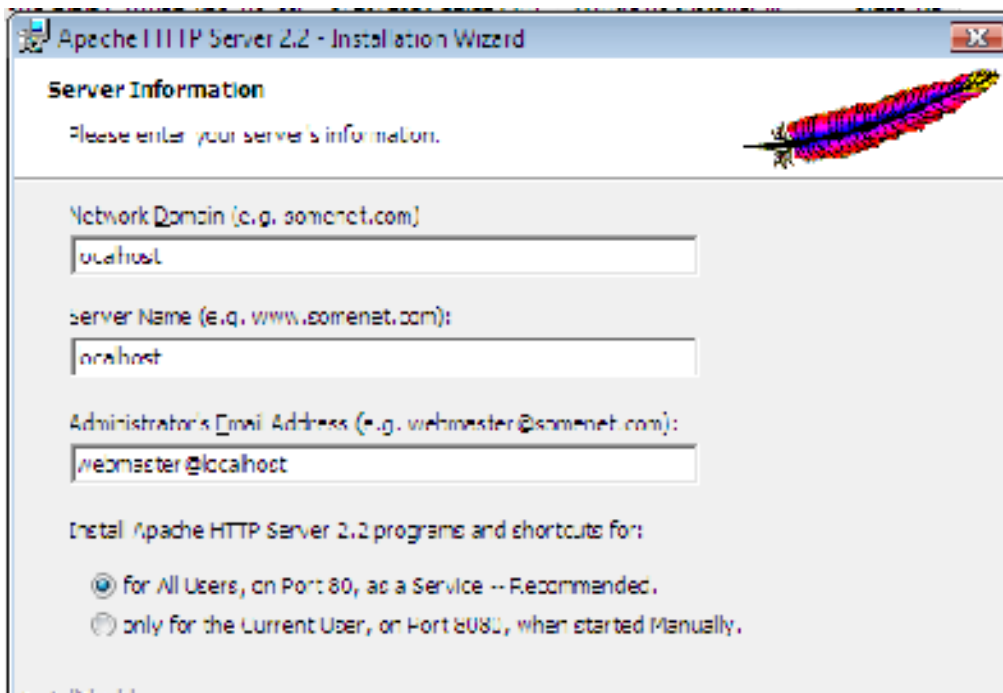
## Part 6 - Installing Apache HTTP Server 2.2.14

- \_\_1. Login as the administrative ID created for the class.
- \_\_2. Run **apache\_2.2.14-win32-x86-no\_ssl.msi** from the **C:\Software\Apache** folder.
- \_\_3. In the Welcome screen click **Next**.

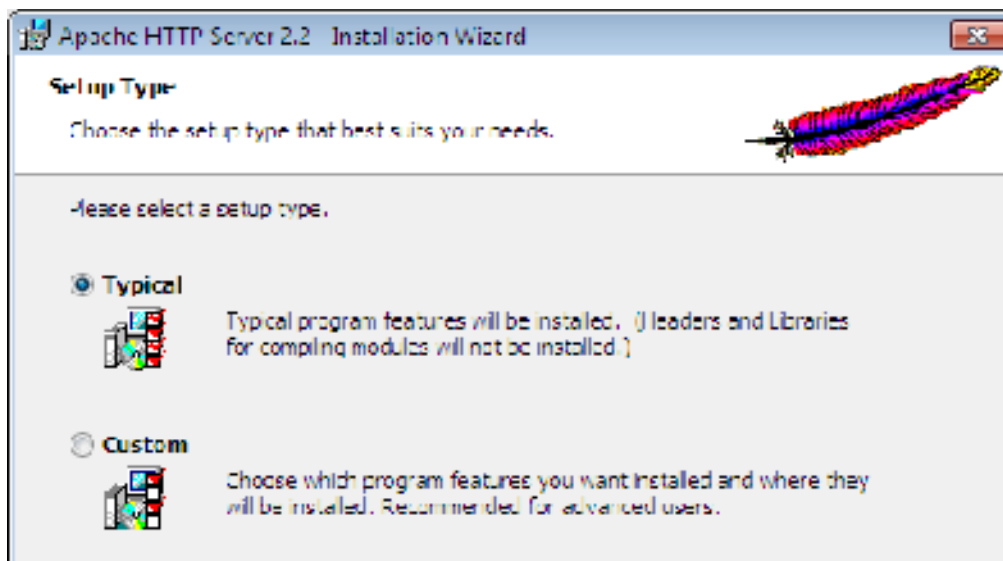


- \_\_4. Accept the License Agreement and click **Next**.
- \_\_5. In the *Read This First* page click **Next**.

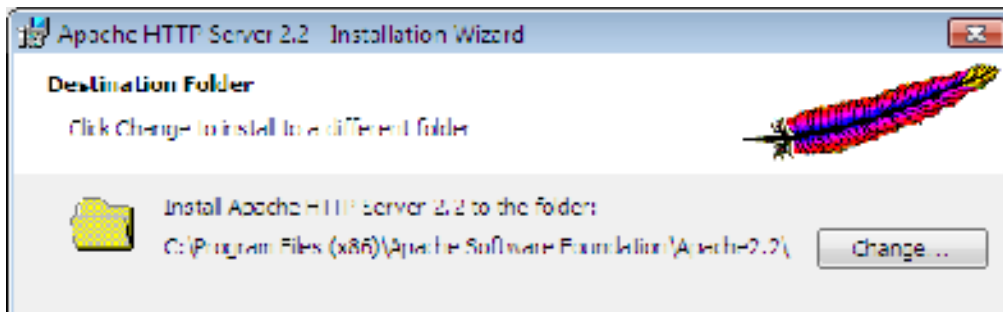
- \_\_6. Enter **localhost** for **Network Domain** and **Server Name**.
- \_\_7. Enter **webmaster@localhost** for **Administrator's E-mail Address** as shown below.



- \_\_8. Click the **Next** button.
- \_\_9. Select **Typical** installation and click **Next**.



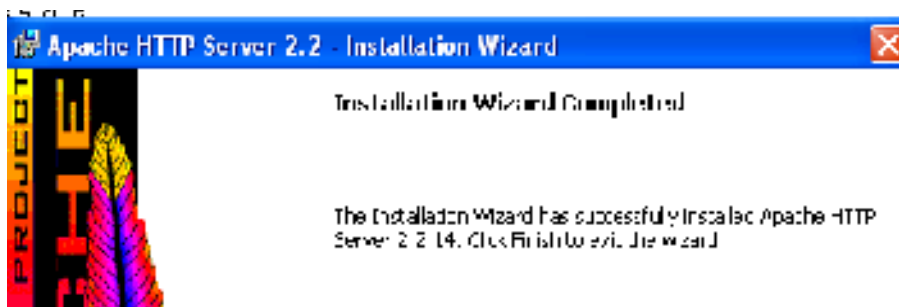
\_\_10. Accept the default installation folder and click the **Next** button.



**Note:** The default installation folder will be slightly different on Windows Vista, Windows 7 and XP.

\_\_11. Click **Install** to start the installation. If prompted by Windows security allow the installation to proceed.

\_\_12. When the *Installation Wizard Completed* message appears click **Finish**.



\_\_13. Verify that the Apache Server is running on the task bar of Windows.



Apache HTTP Server 2.2.14 is installed.

## Part 7 - Installing MySQL 5.1.30

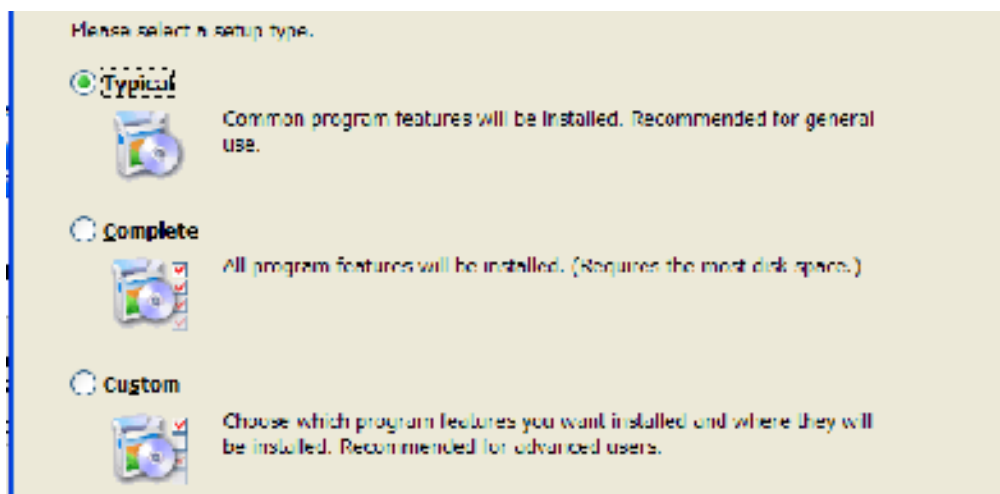
\_\_1. From C:\Software, launch **mysql-essential-5.1.30-win32.msi**

The **Setup Wizard** window will launch.



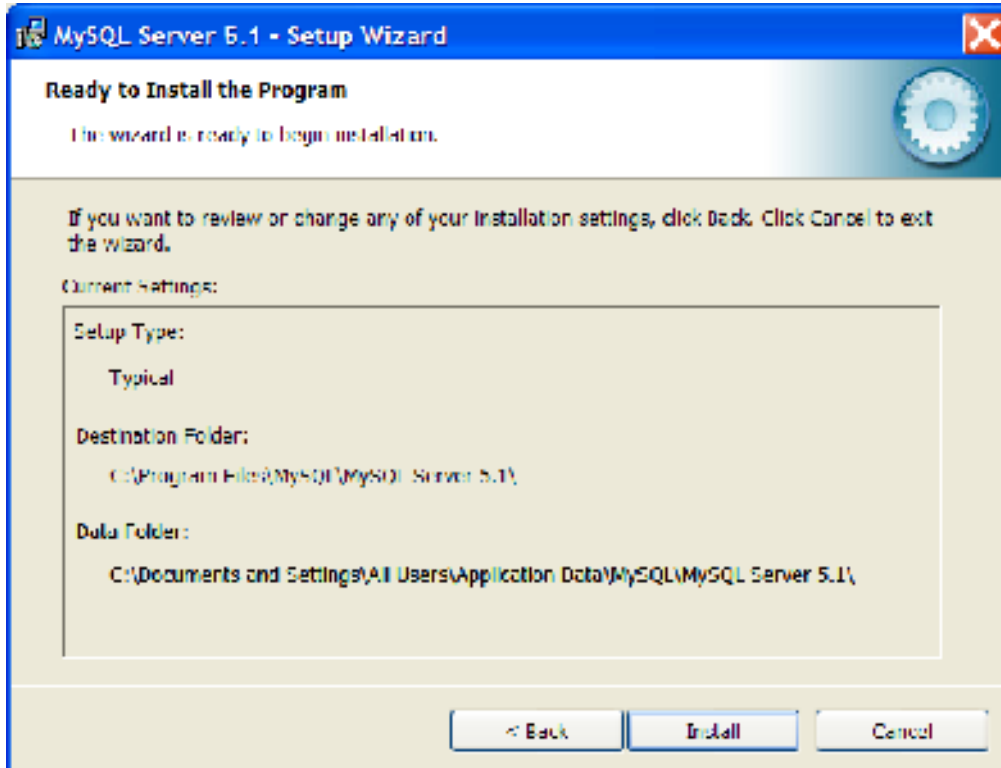
\_\_2. Click **Next**.

\_\_3. In the **Setup Type** window leave **Typical** selected and click **Next**.





\_\_4. Click **Install**. If prompted by Windows security allow the installation to continue.

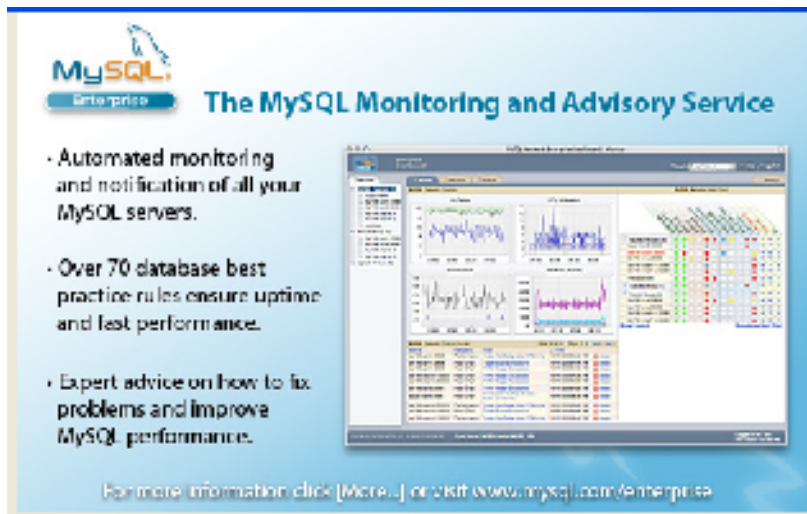


**Note:** The destination folder will be slightly different on Windows Vista and XP.

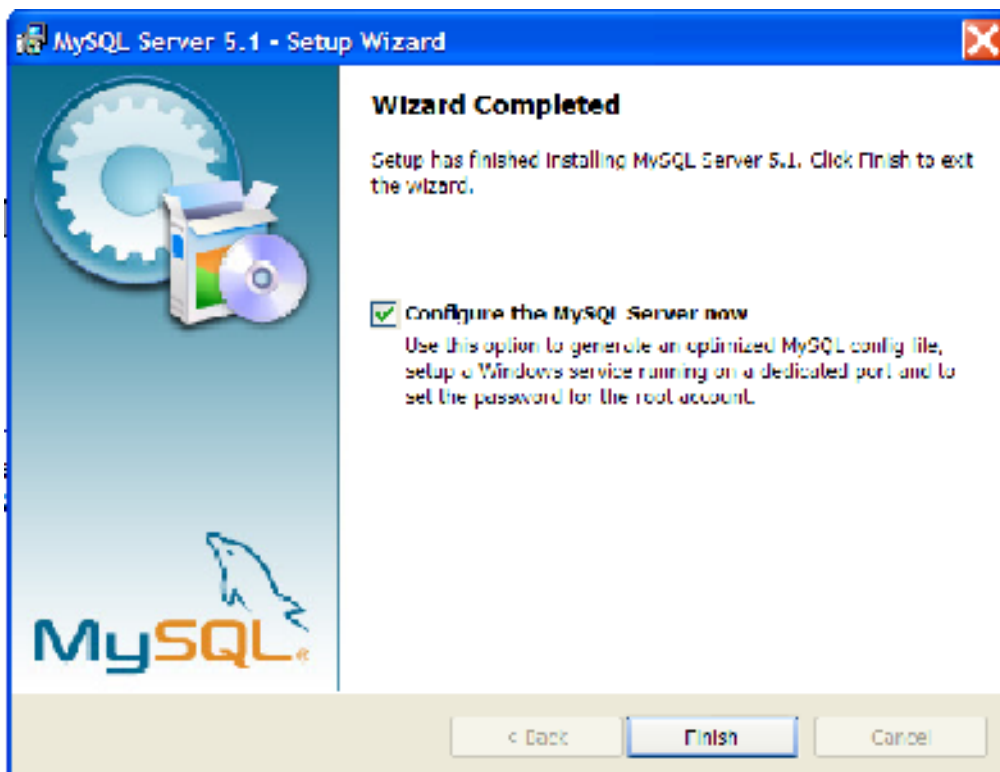
\_\_5. The installation will start and the **MySQL Enterprise** window will appear. Click **Next**.



\_\_6. The **MySQL Monitoring and Advisory Service** window will appear. Click **Next**.

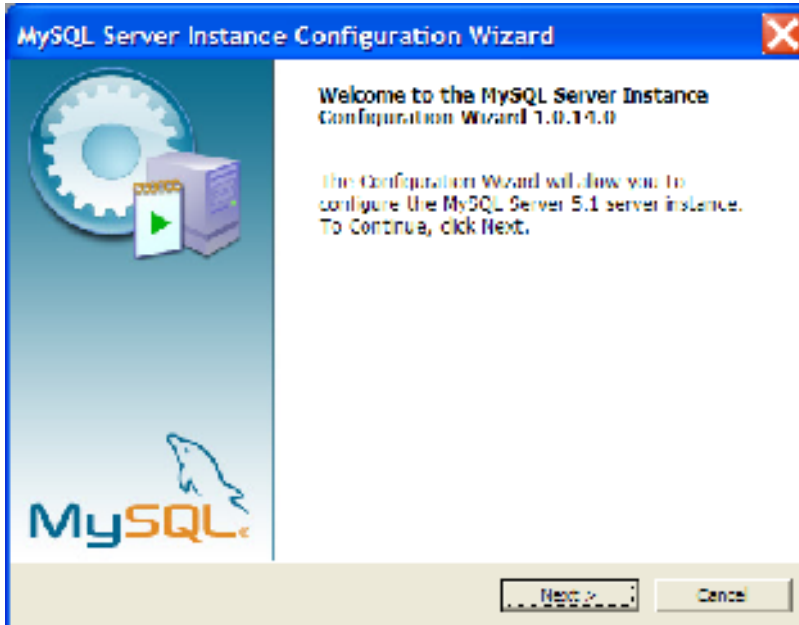


\_\_7. The **Wizard Completed** window will appear. Make sure the **Configure the MySQL Server now** option is checked and click **Finish**.

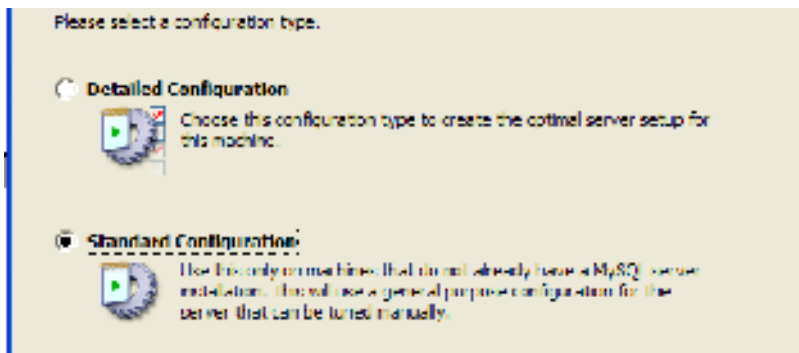


8. The **MySQL Server Instance Configuration Wizard** window will appear. Click **Next**.

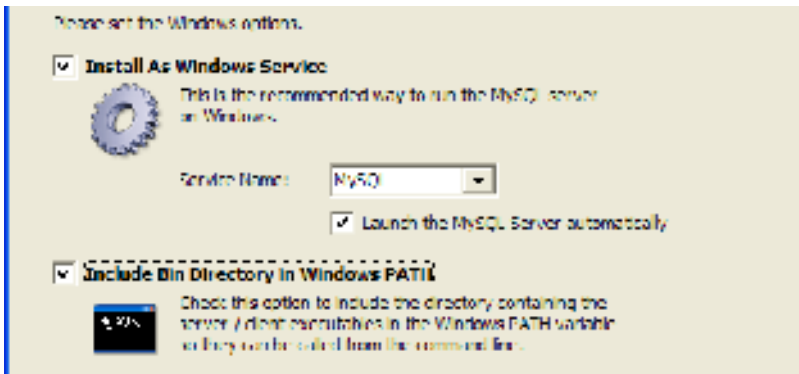
**Note:** If the wizard does not appear select **Start** → **Programs** → **MySQL** → **MySQL Server 5.1** → **MySQL Server Instance Config Wizard**. If prompted by Windows security allow the program to execute.



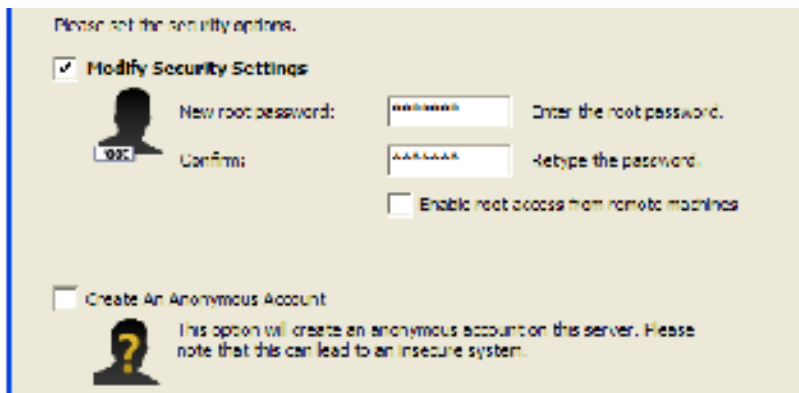
9. In the Instance Configuration window, select **Standard Configuration**. Click **Next**.



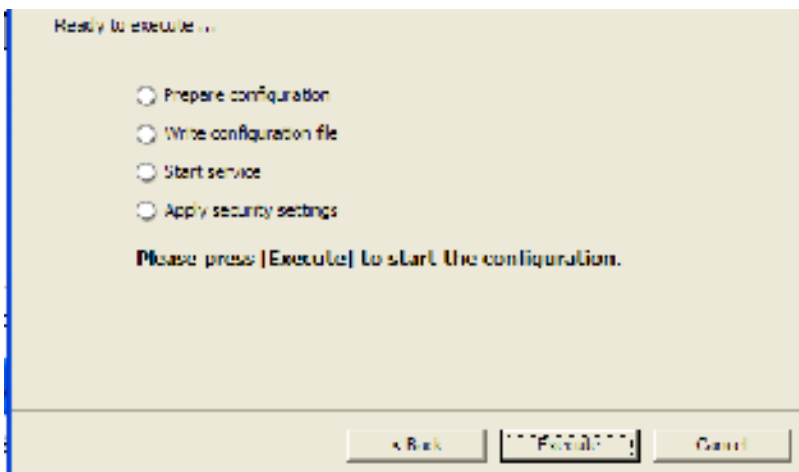
\_\_10. When presented with the **Windows options**, check the option for **Include Bin Directory in Windows PATH**. Click **Next**.



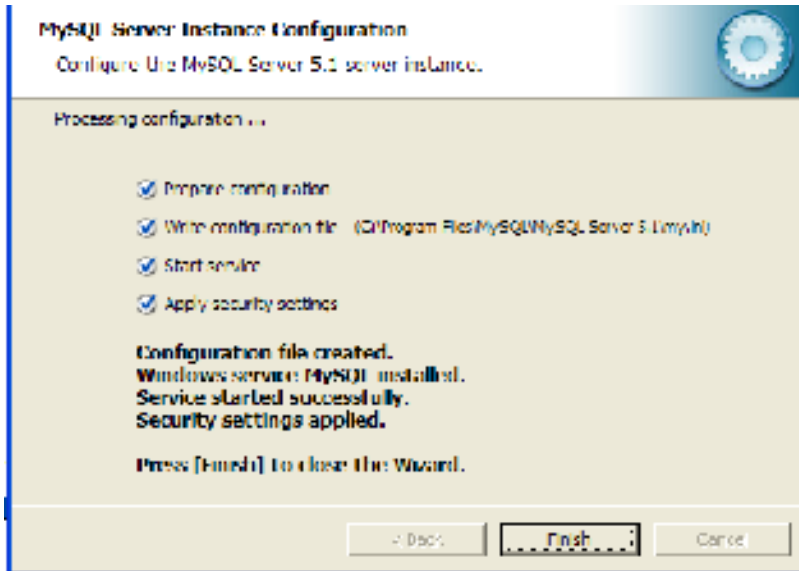
\_\_11. The Security options window will appear. For the **New root password** and **Confirm** fields, enter **root123** and then click **Next**.



\_\_12. The Ready to Execute window will appear. Click **Execute**.



\_\_13. The database will configure. This will take a moment. Eventually, you should see the following:



\_\_14. Click **Finish**.

MySQL has been installed.

Congratulations. The installation has been completed.