

WA1787 Designing and Developing Higher Performance Web Services

Classroom Setup Guide

Web Age Solutions Inc.

Table of Contents

Part 1 - Minimum Hardware Requirements	3
Part 2 - Minimum Software Requirements	3
Part 3 - Software Provided.....	4
Part 4 - Important Ghosting or Imaging Information.....	5
Part 5 - Installation.....	5
Part 6 - Installing Rational Application Developer v7.5 Trial (RAD 7.5.4)	6
Part 7 - Verification of the installation of RAD 7.5.4.....	18

Part 1 - Minimum Hardware Requirements

- Pentium 4 - 2.0GHz or higher
- 2 GB RAM minimum
- 12 GB free hard disk space
- USB port.
- Network connectivity to the internet. Note: Access to internet for labs is required.

Part 2 - Minimum Software Requirements

- Windows 2000 SP4, Windows XP SP2
- Adobe Acrobat Reader 6.0
- Winzip
- Internet browser (Firefox and Internet Explorer)
- IBM Rational Application Developer 7.5 Trial *
- Jakarta JMeter 2.3.4 *

* - indicates software provided as part of the courseware.

Part 3 - Software Provided

Number of memory sticks that you will receive: **2**

The USB memory sticks containing the following files (one file per memory stick):

- WA1787_1.ZIP
- WA1787_2.ZIP

All other software listed under Minimum Software Requirements is either commercially licensed software that you must provide or software that is freely available off the Internet.

Part 4 - Important Ghosting or Imaging Information

Some of the software installed for this course will not function after changing the computer hostname. As such, cloning or imaging should not be used on a fully installed system.

You can save time by extracting the contents of the USB memory stick to C:\ on a clean OS install (no other software installed) and then imaging that hard drive. After restoring the image to the other computers and changing the hostnames, you can then install the software on each computer individually by following the instructions that are detailed later in this document.

Part 5 - Installation

__1. From a USB memory stick, extract the **WA1787_1.ZIP** file to C:\

__2. From a USB memory stick, extract the **WA1787_2.ZIP file** to C:\

__3. Review that the following folders were created:

- C:\LabFiles
- C:\Software\jakarta-jmeter-2.3.4
- C:\Software\RAD
- C:\Software\RAD_SETUP
- C:\Software\WAS70

Part 6 - Installing Rational Application Developer v7.5 Trial (RAD 7.5.4)

Installing RAD 7.5.4 involves two basic steps: installing the IBM *Installation Manager* and then installing *RAD 7.5.4* itself. This document will outline all these steps.

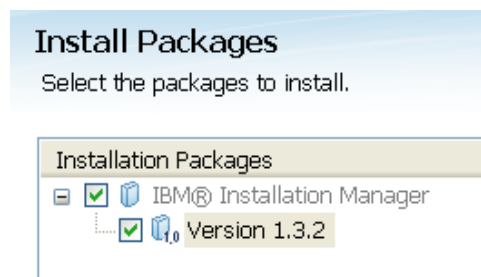
Average time for installation of RAD 7.5.4 Trial: 60 minutes.

- __1. Before you begin, please shut down any running applications. The installation process is quite CPU/disk intensive.
- __2. From **C:\Software\RAD_SETUP**, run **launchpad.exe**. The installer will begin.
- __3. Select **English** as the language and click **OK**.



- __4. Click **Install IBM Rational Application Developer for WebSphere Software**.

A new program – the **IBM Installation Manager** will launch. You will then be prompted to *Install Packages*.



- __5. Make sure both **IBM Installation Manager** and **Version 1.3.2** are selected and click

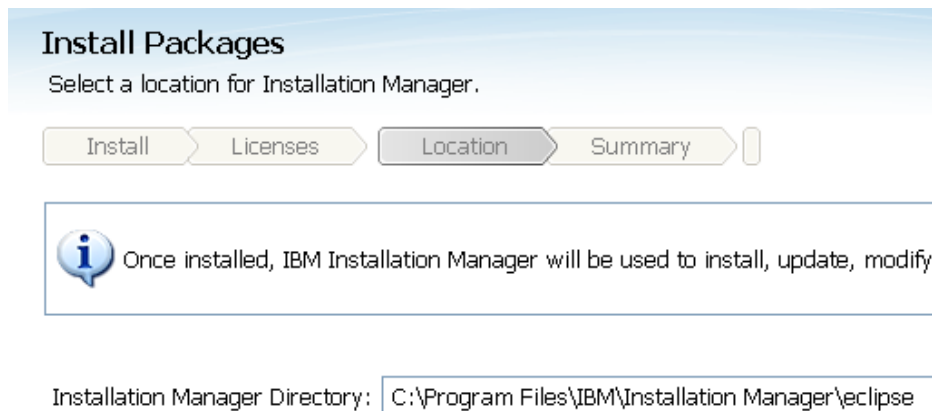
Next.

The *License Agreement* screen will appear.



__6. At the bottom of the screen, select **I accept the terms in the license agreements** and click **Next**.

You will be asked to select a location for the Installation Manager.



__7. Leave the default *Installation Manager Directory* and click **Next**.

You will be asked to review summary information.

Install Packages
Review the summary information. Click Back to make changes or click Install.

Install Licenses Location **Summary**

Target Location
Package Group Name: IBM Installation Manager
Installation Directory: C:\Program Files\IBM\Installation Manager\eclipse

Packages

Packages
IBM® Installation Manager 1.3.2

__ 8. Click **Install**.

The *Installation Manager* will install. Eventually, it will complete.



The packages are installed. [View Log File](#)

The following package was installed into package group IBM Installation Manager :

IBM® Installation Manager

__ 9. Click **Restart Installation Manager**.

The **Installation Manager** will re-launch.

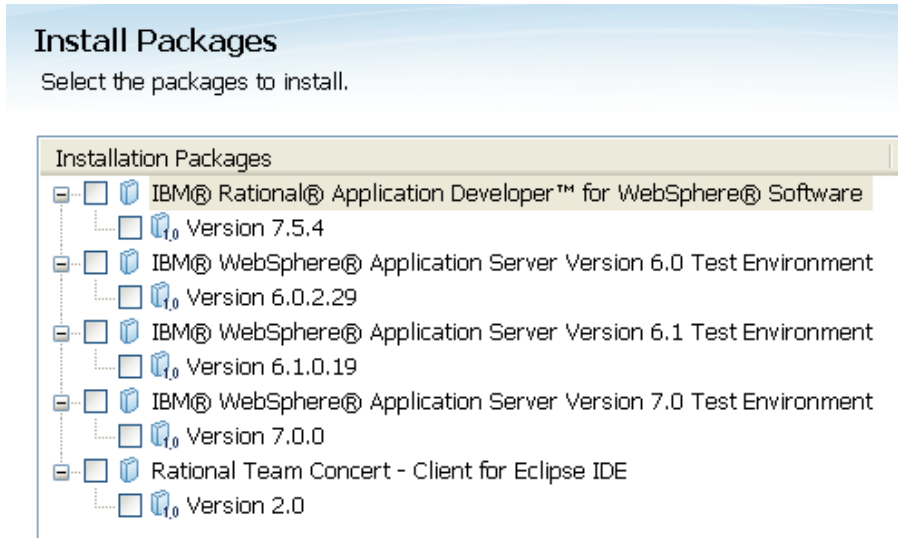
IBM. Installation Manager



__10. Click **Install**.

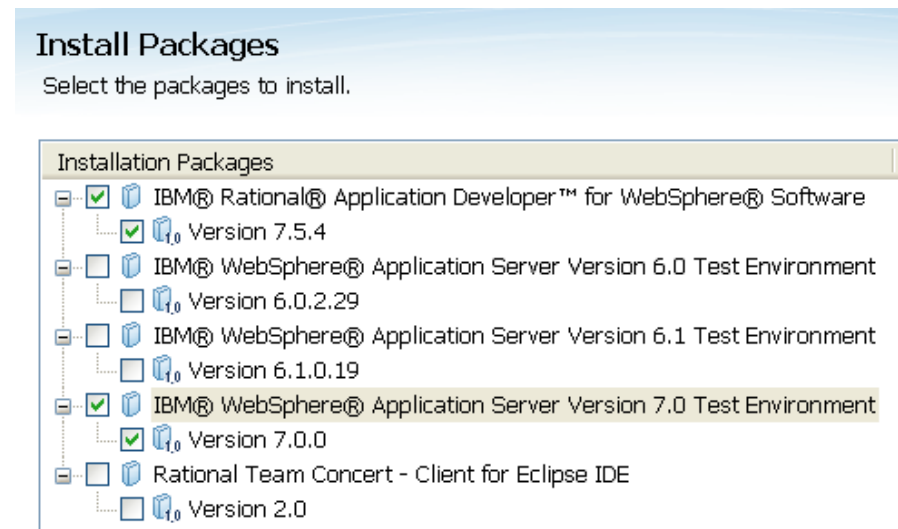
Note: At this point, you *may* be told that a new version of IBM Installation Manager is available. Click **Yes** if this screen appears. The Installation Manager will then connect to the Internet and run a quick update. At the end of the update procedure, you will be asked to restart the Install Manager. Simply click **OK**. The Installation Manager will appear again. You may need to switch between windows. Click **Install** again.

The *Install Packages* screen will appear.



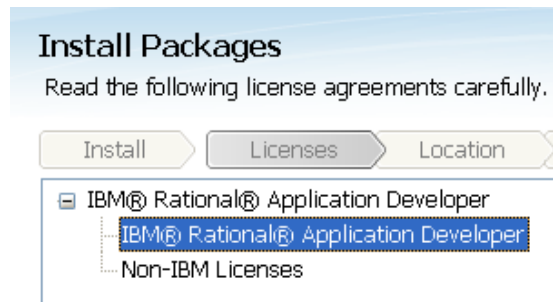
__11. Select the following packages:

- **IBM Rational Application Developer** for WebSphere Software
- **IBM WebSphere Application Server Version 7.0 Test Environment**



__12. Make sure your selection looks like above and click **Next**.

The *License Agreement* will appear.



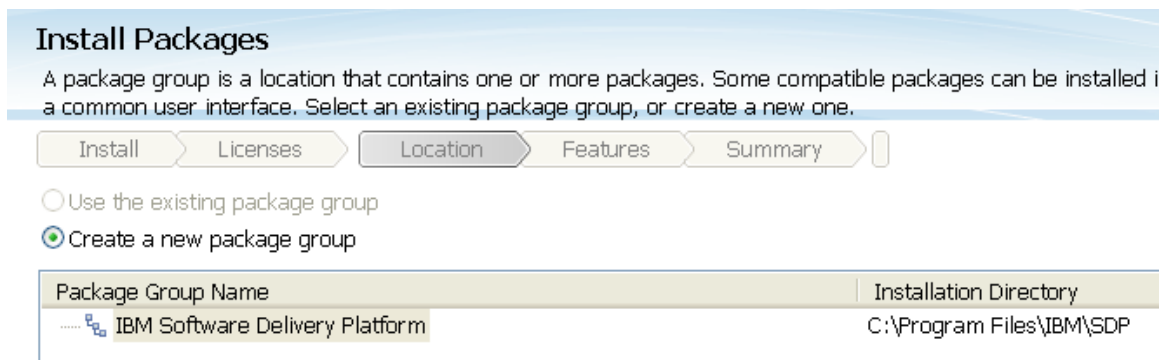
__13. At the bottom of the page, click **I accept the terms in the license agreements** and click **Next**.

You will be asked to select a location for the shared resources directory:



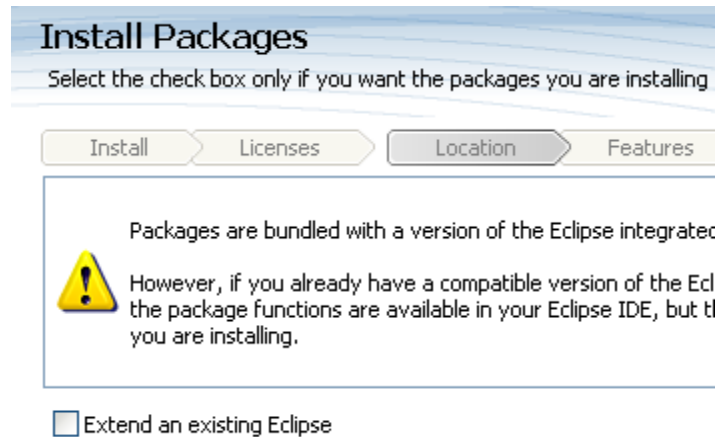
__14. Leave the default *Shared Resources Directory* and click **Next**.

You will be asked to select a directory for the IBM Software Delivery Platform.



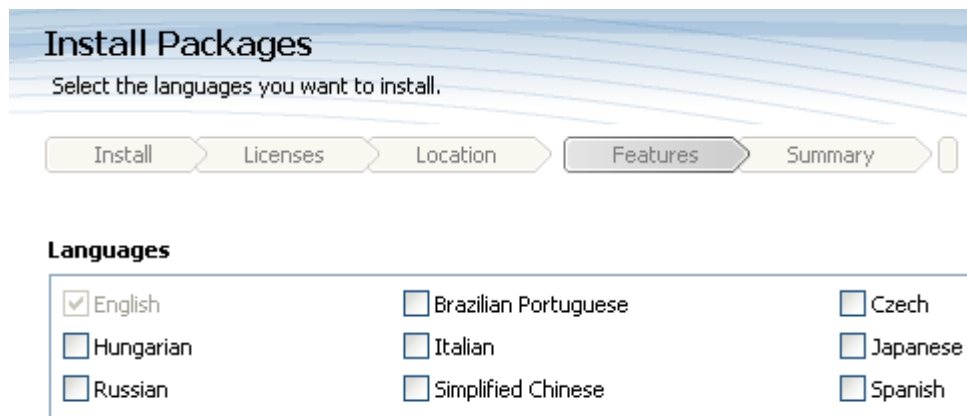
__15. Leave the default *Installation Directory* and click **Next**.

You will be asked if you would like to extend an existing version of Eclipse.



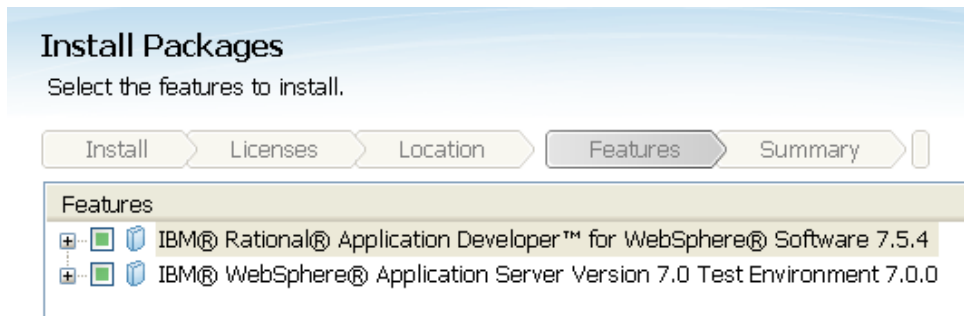
__16. Do not select anything and simply click **Next**.

The Languages page will open.



__17. Leave **English** selected and click **Next**.

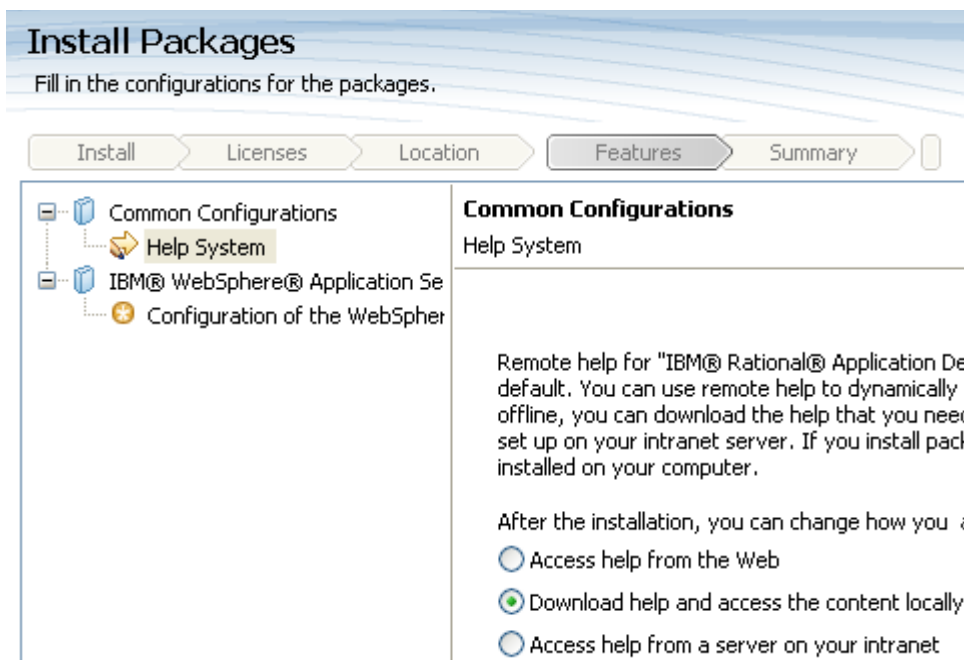
You will be asked to select the features to be installed.



__18. Accept the defaults and simply click **Next**.

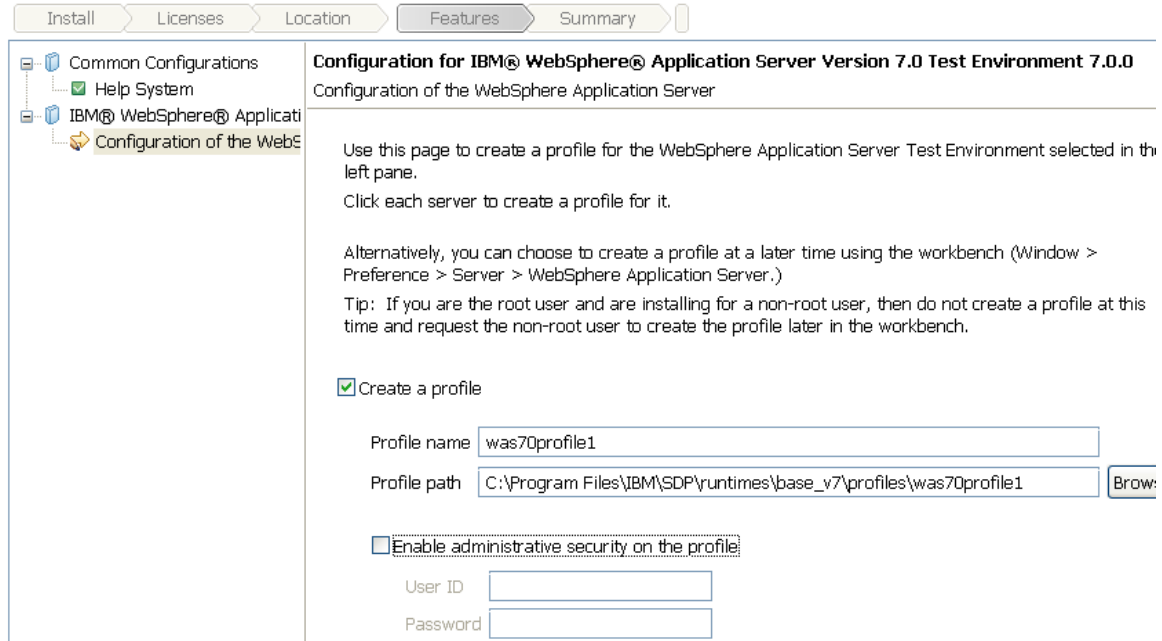
The Common configuration page will open.

__19. For the option for the *Help System* select **Download help and access the content locally**.



__20. Click **Next**.

__21. In the configuration page for WebSphere Application Server un-check the **Enable administrative security on the profile** check option and leave the **Create a profile** check option selected.



__22. Click **Next**.

The Summary Information will appear.

Install Packages

Review the summary information. Click Back to make changes or click Install.

Install

Licenses

Location

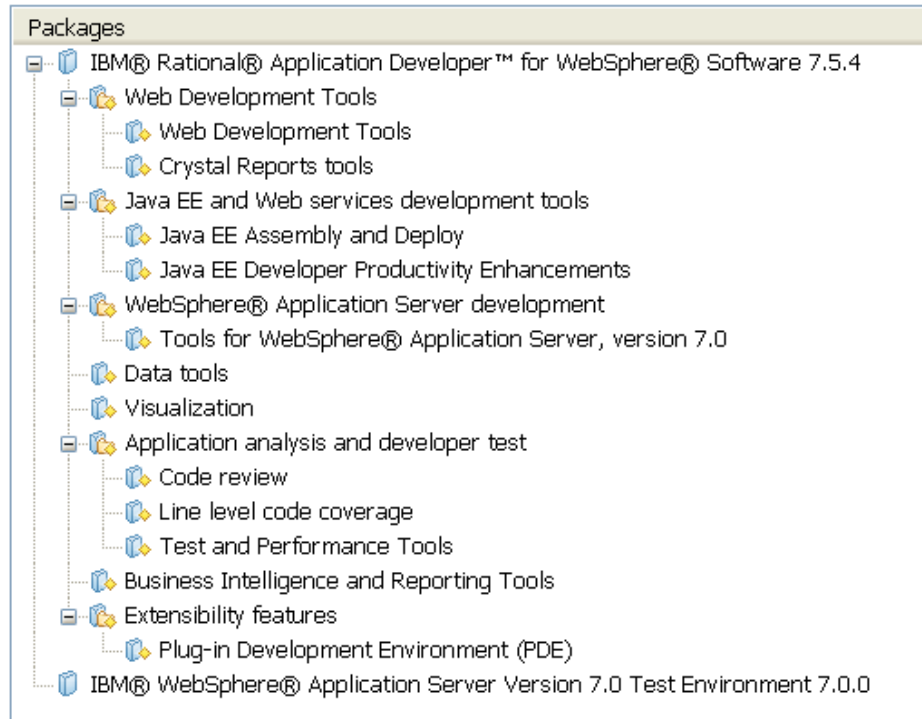
Features

Summary

Target Location

Package Group Name: IBM Software Delivery Platform
Installation Directory: C:\Program Files\IBM\SDP
Shared Resources Directory: C:\Program Files\IBM\SDPShared


Packages



__23. Click **Install** and the installation will begin.

This may take some time (up to one hour on slower machines), so be patient.

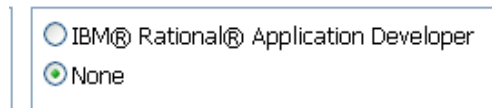
Eventually, installation will complete.

 The packages are installed. [View Log File](#)

The following packages were installed into package group IBM Software Delivery Platform: Which package do you want to start?



__24. Check **None**.



__25. Click **Finish**.

__26. Close all open windows.

Part 7 - Verification of the installation of RAD 7.5.4

__1. Open the following file:

```
C:\Program Files\IBM\SDP\runtimes\base_v7\logs\install\log.txt
```

__2. Look at the end of the file for the message:

```
panning.InstallNIFMaintenanceMediaSpanning, msg1, Running configuration command: S
panning.InstallNIFMaintenanceMediaSpanning, msg1, Current install/uninstall proces
s.SettleNIFRegistryAction, msg1, Current install/uninstall process is successful.
s.SetExitCodeAction, msg1, CWUPI0000I: EXITCODE=0
s.ISMPLogSuccessMessageAction, msg1, INSTCONFSUCCESS
```

If you see the message INSTCONFSUCCESS, it means that WebSphere Application Server was installed properly.

__3. Open the following file:

```
C:\Program Files\IBM\SDP
\runtimes\base_v7\logs\manageprofiles\was70profile1_create.log
```

__4. Look at the end of the file for the message:

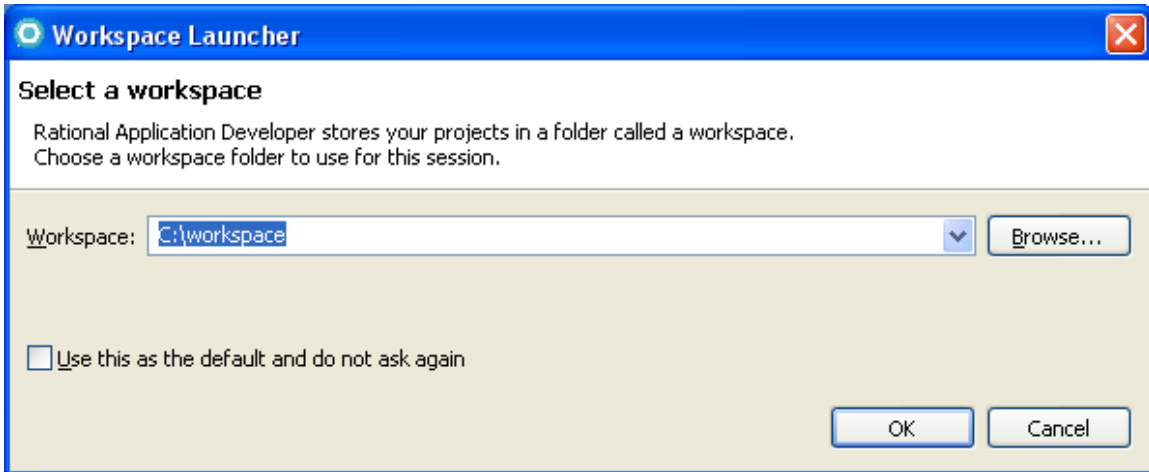
```
<record>
  <date>Feb 4, 2011 11:23:25 AM</date>
  <millis>1296836605859</millis>
  <sequence>4497</sequence>
  <logger>com.ibm.wsspi.profile.WSProfileCLI</logger>
  <level>INFO</level>
  <class>com.ibm.wsspi.profile.WSProfileCLI</class>
  <method>invokewSProfile</method>
  <thread>0</thread>
  <message>Returning with return code: INSTCONFSUCCESS</message>
</record>
</log>
```

If you see the message INSTCONFSUCCESS, it means that the WebSphere Application Server profile was created correctly.

__5. Close all open files.

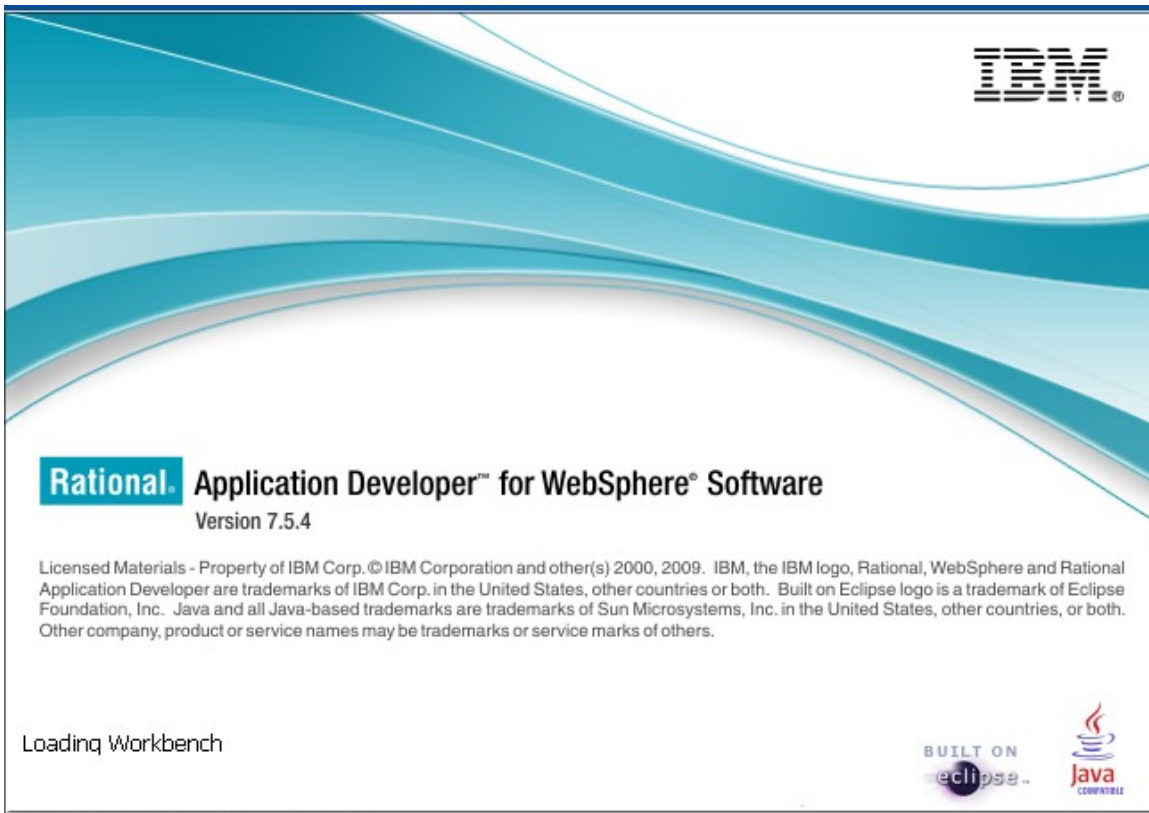
__6. Select **Start->All Programs->IBM Software Delivery Platform->IBM Rational Application Developer 7.5->IBM Rational Application Developer**.

__7. In the workspace window, change the **Workspace** to **C:\workspace**

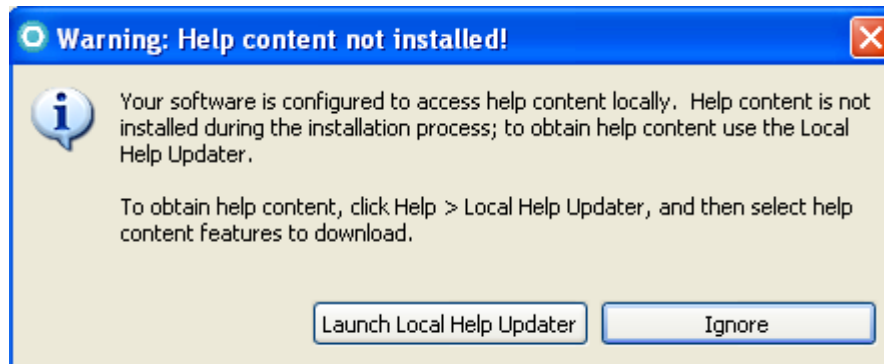


__8. Click **OK**.

RAD 7.5.4 will start.

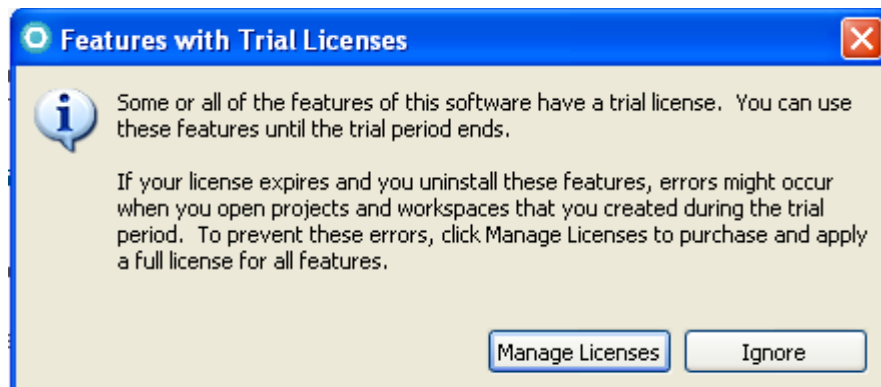


The **Warning: Help content not installed** dialog will open. It may take some seconds to appear.



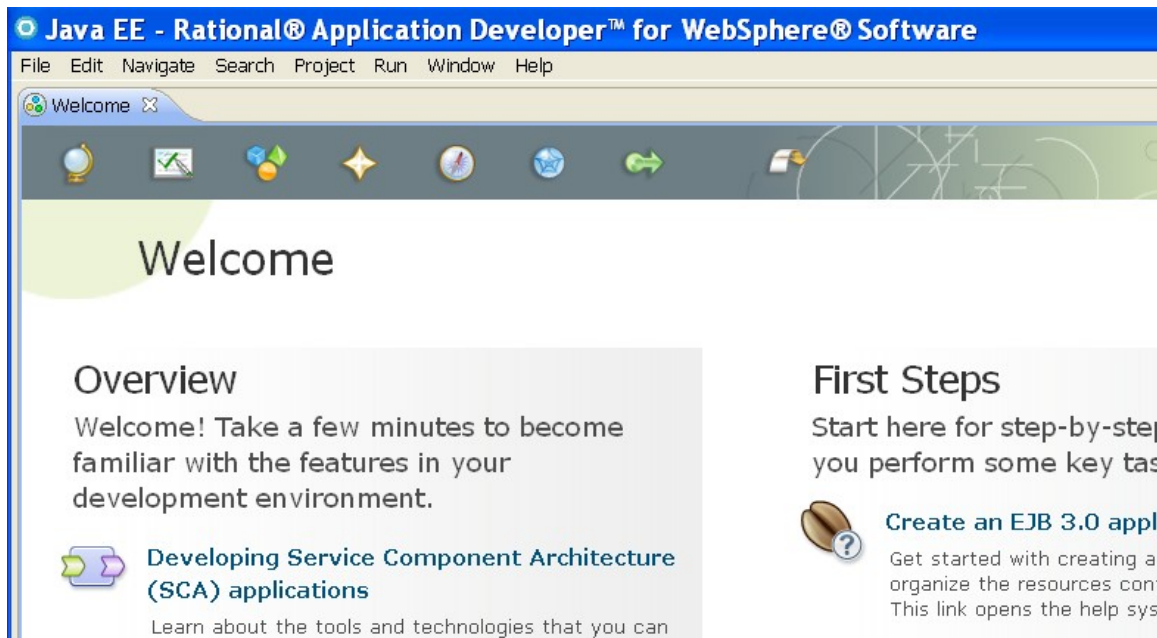
__9. Click **Ignore**.

The **Features with Trial Licenses** dialog will open.



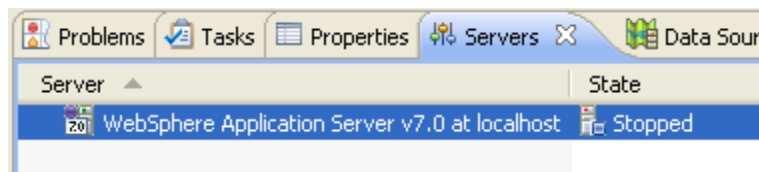
__10. Click **Ignore**.

The **Welcome** page will open.



__ 11. Close the **Welcome** page, by click the **X** button in its tab.

__ 12. Click the **Servers** tab in the bottom panel. You should see **WebSphere Application Server v7.0 at localhost** listed.



__ 13. Start the server by right clicking on **WebSphere Application Server v7.0 at localhost** and selecting **Start**.

__ 14. The **Console** view will show a series of messages while the server is starting. Eventually, after the server finishes starting (which can take a few minutes), you will see the message **Server server1 open for e-business**. You will need to scroll up to find the message.

```

00000000 WSChannelFram A CHF0019I: The Transport Channel Service has star
00000000 WSChannelFram A CHF0019I: The Transport Channel Service has star
0000000b SchedulerServ I SCHD0077I: The Scheduler Service is starting the :
0000000b SchedulerServ I SCHD0078I: The Scheduler Service has completed st:
00000000 RMICConnectorC A ADMC0026I: The RMI Connector is available at port
00000000 JMXConnectors I ADMC0058I: The JMX JSR160RMI connector is availab
00000000 WsServerImpl A WSVR0001I: Server server1 open for e-business
    
```

Note

After the server is started you would see the following error message:

SystemErr R Cannot load XSL files from C:\Program Files\IBM\SDP\runtimes\base_v7\plugins\com.ibm.ws.runtime.jar

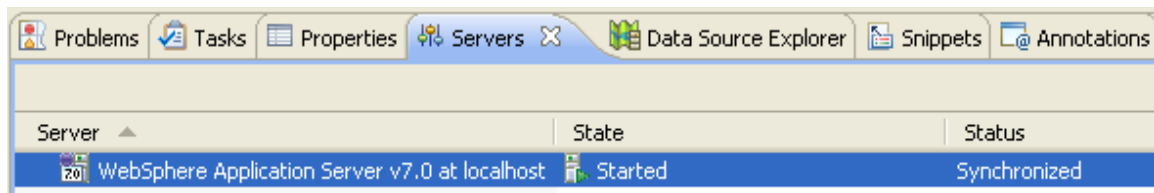
The error is displayed because some XSL files are missing from the com.ibm.ws.runtime.jar file which are used to retrieve product version information during server startup.

This problem is fixed in the Fix Pack 1 (7.0.0.1). **At this moment you can ignore this message and you don't need to install any fix pack, RAD will work fine.**

If you want to look for more information related with this fix pack you can search at:

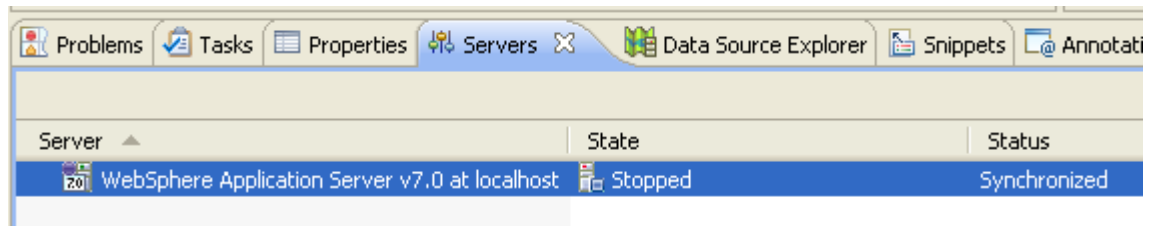
http://www-01.ibm.com/support/docview.wss?rs=0&q1=%22Cannot+load+XSL+files%22&uid=swg1PK71997&loc=en_US&cs=utf-8&cc=us&lang=en

__15. Switch to the **Servers** view. The **Status** will have changed to **Started** for **WebSphere Application Server v7.0 at localhost**.



__16. Now, stop the server by right clicking on **WebSphere Application Server v7.0** and

selecting **Stop**. Shortly thereafter, the status for the server will change to **Stopped**.



__17. From the menu, select **File->Exit** to close Rational Application Developer.

Congratulations, **Rational Application Developer v7.5.4** has been installed.

Congratulations. The installation of **WA1787 Designing and Developing Higher Performance Web Services** has been completed.