

**WA1781 WebSphere Process  
Server v6.2 Administration**

**Classroom Setup Guide**

**Web Age Solutions Inc.**

## Table of Contents

Part 1 - Minimum Hardware Requirements .....	3
Part 2 - Minimum Software Requirements .....	4
Part 3 - Software Provided.....	5
Part 4 - Important Ghosting or Imaging Information.....	6
Part 5 - Installation.....	7
Part 6 - Installing WebSphere Integration Developer v6.2.....	8
Part 7 - Installing DB2 Enterprise Server Edition v9.5.....	15

## **Part 1 - Minimum Hardware Requirements**

- Pentium 4 – 1.4 GHz or higher
- 2 GB RAM minimum
- 24 GB free on the C drive.
- Ethernet or Token Ring card
- USB port
- Network connectivity to the Internet

## **Part 2 - Minimum Software Requirements**

- Microsoft Windows XP SP2
- Internet Explorer 6.0, Mozilla Firefox 2.0 (or higher)
- WebSphere Process Server v6.2 (WPS v6.2)\*
- WebSphere Integration Developer v6.2 (WID v6.2)\*
- DB2 Enterprise Server Edition v9.5\*

\* - indicates software provided as part of the courseware.

### **Part 3 - Software Provided**

Number of USB memory sticks that you will receive: **3**

Name of the files containing in the memory sticks (one file per memory stick):

- **WA1781\_1.ZIP**
- **WA1781\_2.ZIP**
- **WA1781\_3.ZIP**

All other software listed under Minimum Software Requirements is either commercially licensed software that you must provide or software that is freely available off the Internet.

## **Part 4 - Important Ghosting or Imaging Information**

Some of the software installed for this course will not function after changing the computer hostname. As such, cloning or imaging should not be used on a fully installed system.

You can save time by extracting the contents of the USB memory stick to C:\ on a clean OS install (no other software installed) and then imaging that hard drive. After restoring the image to the other computers and changing the hostnames, you can then install the software on each computer individually by following the instructions that are detailed later in this document.

## Part 5 - Installation

- \_\_1. Create a user named **wasadmin** with password **wasadmin** who belongs to the Administrators group.
- \_\_2. Log in as **wasadmin**. Log in with this user everytime you restart the computer.
- \_\_3. From a USB memory stick, extract the **WA1781\_1.ZIP** file to C:\
- \_\_4. From a USB memory stick, extract the **WA1781\_2.ZIP** file to C:\
- \_\_5. From a USB memory stick, extract the **WA1781\_3.ZIP** file to C:\
- \_\_6. Review that the following folders were created:
  - **C:\LabFiles**
  - **C:\Software\**
  - **C:\Software\DB2 v9.5 ESE**
  - **C:\Software\ProcessServer62**
  - **C:\Software\WID6.2**

## Part 6 - Installing WebSphere Integration Developer v6.2



**Warning: You cannot use ghosting or disk imaging to install this software. You must install the software on each machine separately. Do not change the computer hostname after this software is installed. Also, do not install this software from a network share. It will only function partially if you do.**

Average time to install this software: 40 minutes

\_\_1. From `C:\Software\WID6.2\disk1`, run `launchpad.exe`



\_\_2. Select **English** and click **OK**.

The Software Development Platform page will open.

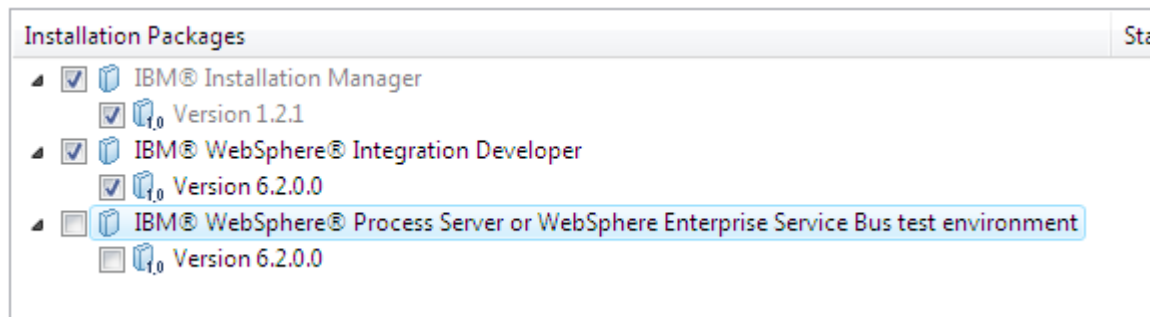




\_\_3. Click on **Install IBM WebSphere Integration Developer V6.2**

The Install Packages page will open.

\_\_4. **Uncheck the "IBM WebSphere Process Server or WebSphere Enterprise Service Bus test environment"**.



\_\_5. Make sure your options are configured as show above and click **Next**.

\_\_6. Accept the license terms and click **Next**.

\_\_7. Leave the default directories for the Shared Resources and Installation Manager and click **Next**.

## Install Packages

Select a location for the shared resources directory and a location for Installation Manager.

Install

Licenses

Location

Features

Summary

When you install packages, files are stored in two locations:



- 1) The shared resources directory - resources that can be shared by multiple packages.
- 2) The installation directory - any resources that are unique to the package that you are installing.

Important: You can only select the shared resources directory the first time you install a package because it must have adequate space for the shared resources of future packages.

Shared Resources Directory:

C:\Program Files\IBM\SDPShared



Once installed, IBM Installation Manager will be used to install, update, modify, manage

Installation Manager Directory:

C:\Program Files\IBM\Installation Manager\eclipse

The Installation directory for WID will open.

\_\_8. Change the installation location to **C:\WID62**

## Install Packages

A package group is a location that contains one or more packages. Some packages can be installed into a common package group existing package group, or create a new one.

Install Licenses Location Features Summary

Use the existing package group

Create a new package group

Package Group Name	Installation Directory
IBM WebSphere Integration Developer	C:\WID62

Package Group Name: IBM WebSphere Integration Developer

Installation Directory: C:\WID62

### Details

Shared Resources Directory: C:\Program Files\IBM\SDPShared

### Disk Space Information

Volume	Available Space
C:	13.62 GB

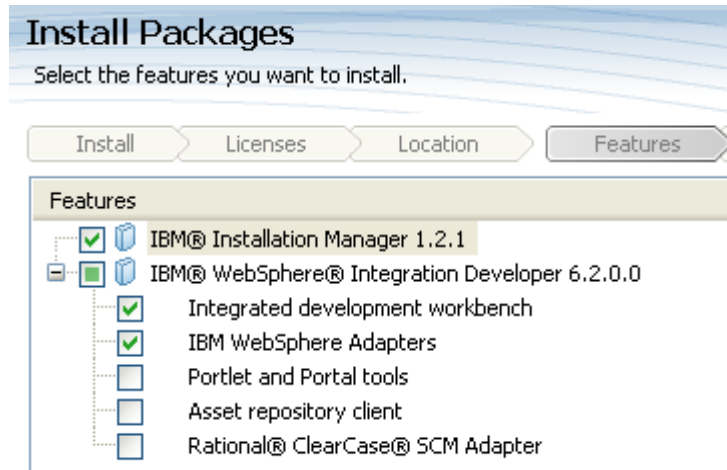


**Important: You must make this change. The default installation location is too long and will cause problems with the functionality of the product.**

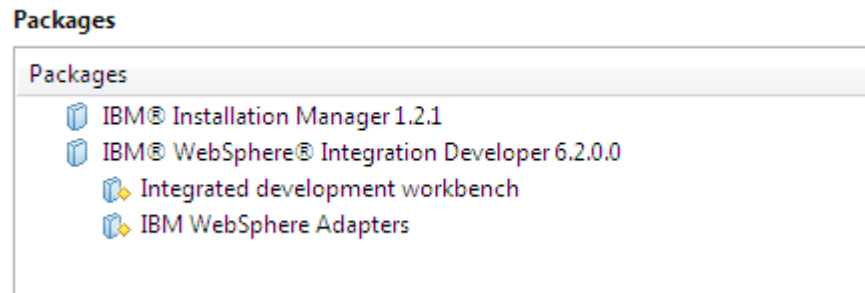
\_\_ 9. Click **Next**.

\_\_ 10. Leave the default language and click **Next**.

\_\_ 11. The features to install page will open. Leave the defaults and click **Next**.



The **Summary** page will open.



\_\_12. Click **Install**.

Installation will start. This process will take some time.

► **Repository Information**

Installing.

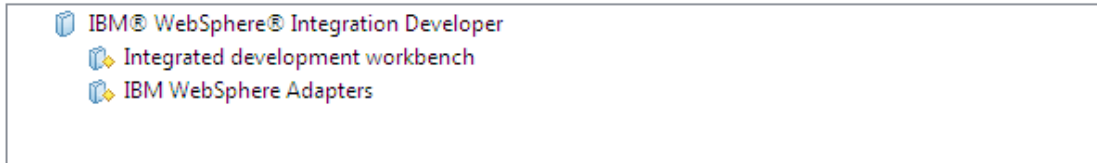


When the installation is done you will see this page:



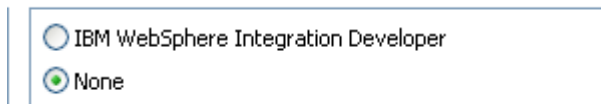
Success! The installation was successful. [View Log File](#)

The following package was installed into package group IBM WebSphere Integration Developer:



\_\_13. Select **None**.

Which of the following packages would you like to start?



\_\_14. Click **Finish**.

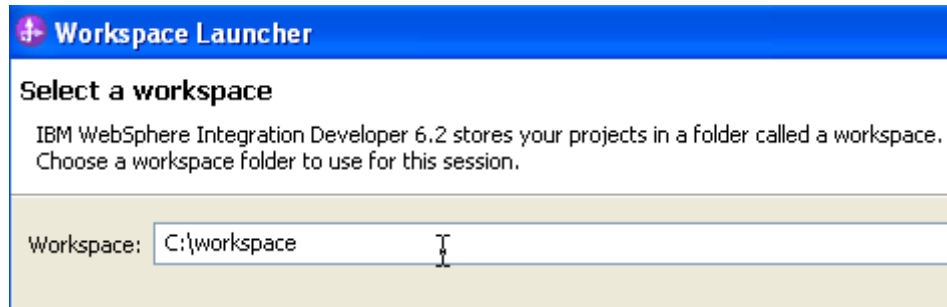
\_\_15. Close the Software Development Platform window.

## Verification of the installation of WID 6.2

\_\_1. Launch WID using the following Windows start menu: **Start->All programs->IBM WebSphere Integration Developer->IBM WebSphere Integration Developer V6.2->WebSphere Integration Developer V6.2**

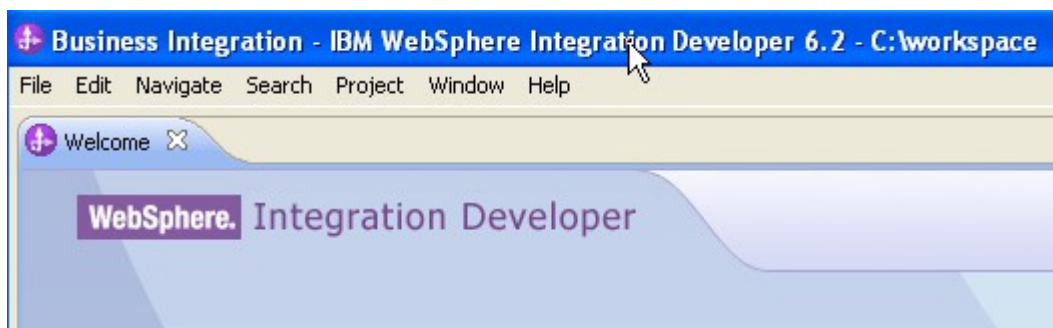


\_\_2. Change the workspace to **C:\workspace** as shown below.



\_\_3. Click **OK**.

\_\_4. The Welcome window will open. Close it.



\_\_5. Exit WID by choosing **File->Exit** from the menu bar.

\_\_6. Close all the open files.

WebSphere Integration Developer v6.2 has installed successfully.

## Part 7 - Installing DB2 Enterprise Server Edition v9.5



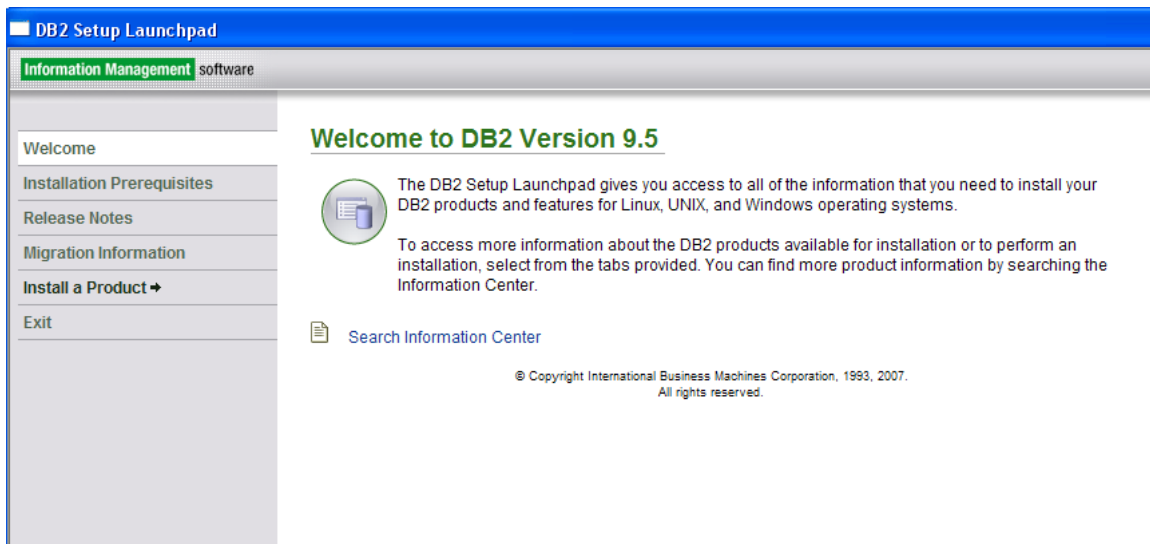
**Warning: You cannot use ghosting or disk imaging to install this software. You must install the software on each machine separately. Do not change the computer hostname after this software is installed. Also, do not install this software from a network share. It will only function partially if you do.**

Average time to install this software: 20 minutes

\_\_1. Browse to **C:\Software\DB2 v9.5 ESE** and launch **setup.exe**.

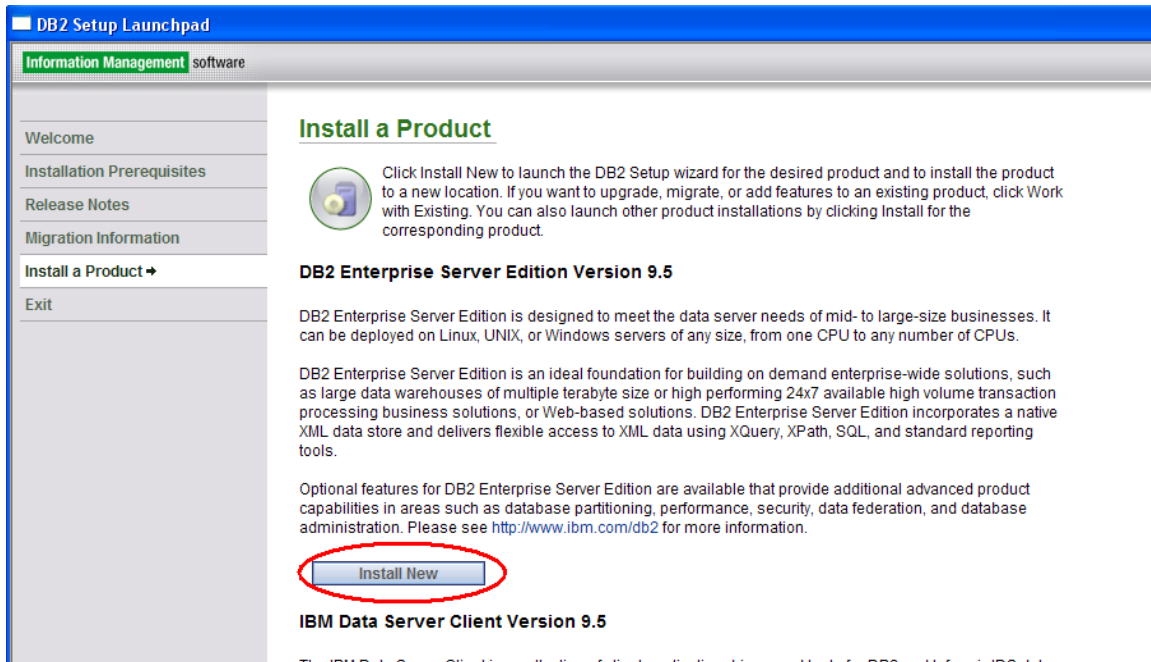
**Note:** If installing on Windows Vista you must right-click the **setup.exe** program and select **Run as administrator**. Failure to do so will cause errors during installation that will make the software unusable.

The **DB2 Setup Launchpad** page will appear.



\_\_2. Click **Install a Product**.

The *Install a Product* page will appear.



3. Click the **Install New** button underneath the **DB2 Enterprise Server Edition Version 9.5** heading.

Wait a few seconds until the *Welcome to the DB2 Setup wizard for DB2 Enterprise Server Edition, Version 9.5* page appears.





\_\_4. Click **Next**.

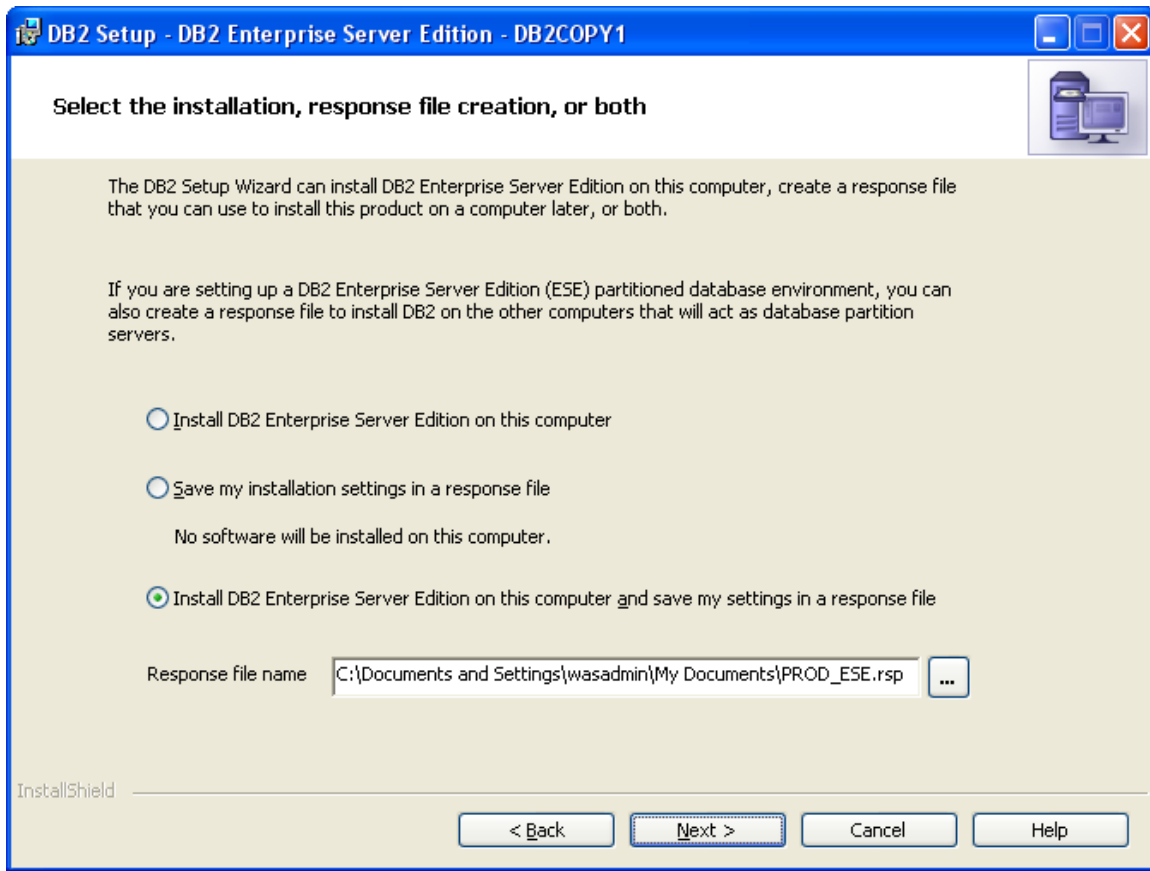
\_\_5. The *Software License Agreement* page will appear. Click the **I accept the terms in the license agreement** radio button.

\_\_6. Click **Next**.

The *Select the installation type* page will appear.

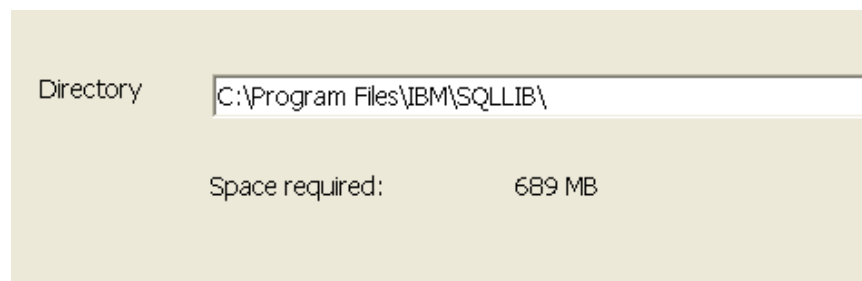
\_\_7. Leave the **Typical** installation option selected and click **Next**.

The *Select the installation action, response file creation, or both* page will appear.



8. Leave **Install DB2 Enterprise Server Edition on this computer and save my settings in a response file** selected and click **Next**.

The *Select the installation folder* page will appear.



9. Leave the default directory and click **Next**.

The *Set user information for the DB2 Administration Server* page will appear.

10. Change the **Password** (and **Confirm Password**) to **db2admin**

User information

Domain: None - use local user account

User name: db2admin

Password: \*\*\*\*\*

Confirm password: \*\*\*\*\*

Use the same user name and password for the remaining DB2 services

InstallShield

< Back   Next >   Cancel   Help

**Note:** If you can't use this password because of password policies use a password that will satisfy password policies. Make sure to tell the instructor that the DB2 software was installed with a different user and/or password.

\_\_ 11. Click **Next**.

The *Configure DB2 instances* page will appear.

\_\_ 12. Leave the defaults and click **Next**.

The *Prepare the DB2 tools catalog* page will appear.

\_\_ 13. Leave the defaults and click **Next**.

The *Set up notifications* page will appear.

\_\_ 14. Uncheck **Set up your DB2 server to send notifications**.

**Set up your DB2 server to send notifications**

Notification SMTP server

**Administration contact list location**

Local - Create a contact list on this computer

Remote - Use an existing contact list on another DB2 server

Remote DB2 server

\_\_15. Click **Next**.

The *Enable operating system security for DB2 objects* page will appear.

\_\_16. Uncheck **Enable operating system security**.

**Enable operating system security**

Information on the DB2 administrators group and DB2 users group is available by clicking Help.

**DB2 administrators group**

Domain

Group name

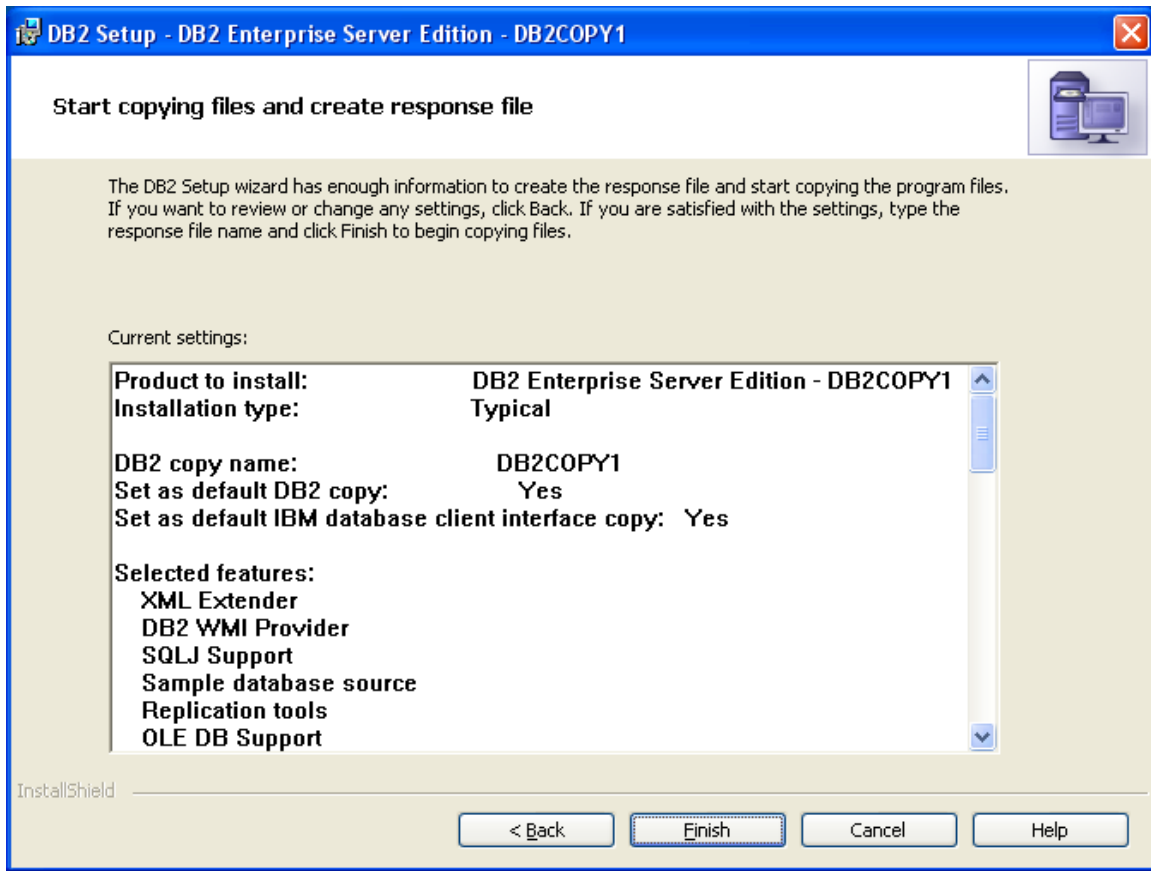
**DB2 users group**

Domain

Group name

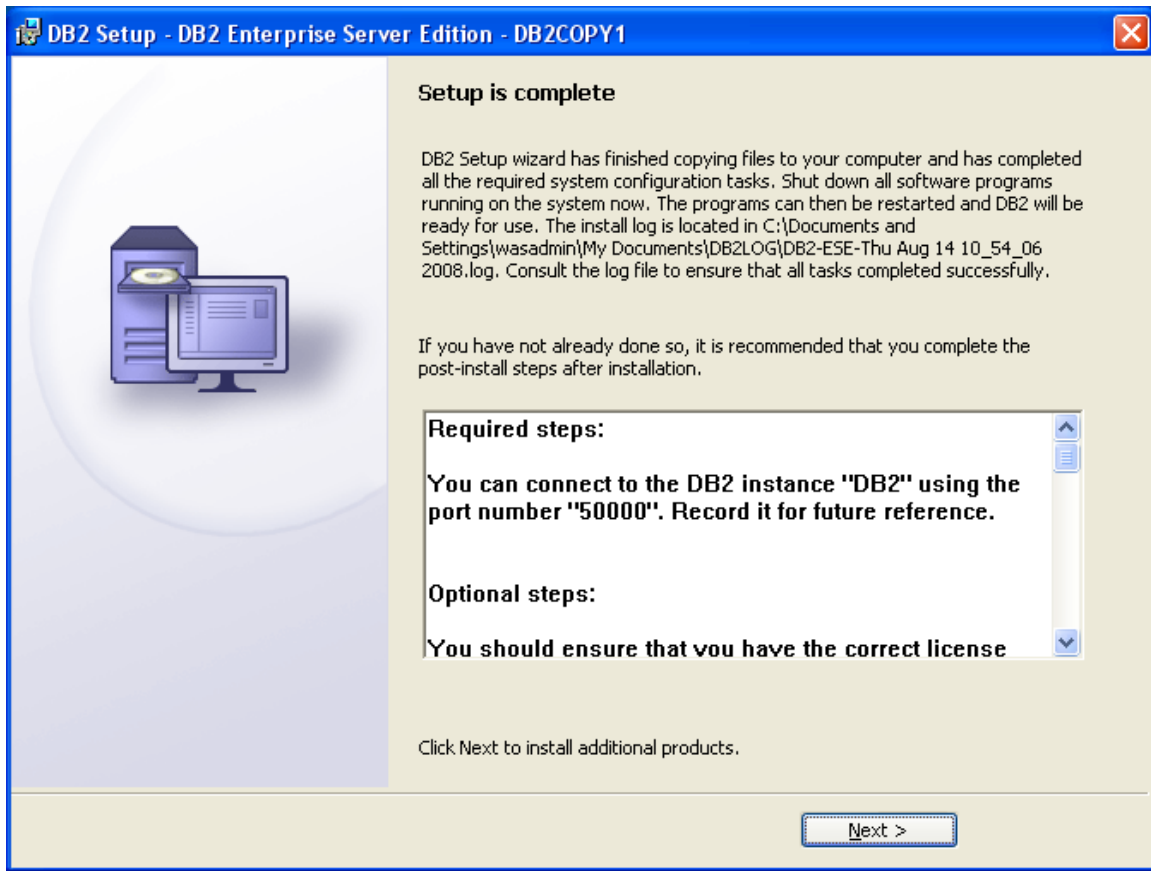
\_\_17. Click **Next**.

The *Start copying files and create response file* page will appear.



\_\_18. Click **Finish** and DB2 will begin installing. This will take some time.

Eventually, the *Setup is complete* page will appear.



\_\_19. Click **Next**.

The *Install additional products* page will appear.

\_\_20. Click **Finish**.

The *Welcome to First Steps for DB2 Database for Linux, UNIX, and Windows* page will appear.

**DB2 Database for Linux, UNIX, and Windows**  
Version 9.5

**Welcome to First Steps**

Database Creation

Database Administration


Application Development

Technical Resources

Product Updates

Exit

## Welcome to First Steps for DB2 Database for Linux, UNIX, and Windows



First Steps introduces some of the key database functions that you can perform using DB2 database systems. These include accessing and managing data objects, maintaining databases automatically by taking advantage of autonomic capabilities, and protecting data using access control techniques. First Steps also points you to additional sources of information about DB2 database systems and its features.

The [Control Center](#) is set of tools that you can use to manage and administer your data servers and databases. The [Command Line Processor \(CLP\)](#) is a text-based interface that you can use to run DB2 commands, SQL statements, and database utilities. These interfaces are included with the IBM Data Server Client.

In addition to the CLP and the Control Center, you may want use the data server administrator tool, a Web-based application to manage your DB2 data servers. It helps you maintain required levels of performance by reducing the time to resolve problems and ultimately avoid problems altogether. Further information on how to obtain the data server administrator tool is described in the [Database Administration](#) section of First Steps.

Details on all product features and licensing terms included with DB2 database products are available in the [DB2 Version 9.5 product licensing information technote](#).

**First Steps helps you perform the following tasks:**

- ◆ [Create the SAMPLE database](#)
- ◆ [Create your own database](#)
- ◆ [View and administer your databases](#)
- ◆ [Create an application using various development environments](#), including the data server developer tool, IBM Rational development tools, and Microsoft® Visual Studio 2005

Done

\_\_21. If the *DB2 First Steps* dialog appears then close it, we don't need the first steps for the class.

\_\_22. Click the **Exit** link to close the window.

\_\_23. Restart the computer.

DB2 Enterprise Server Edition v9.5 installation is completed.

The setup installation has been completed.