

WA1625 Web Services Development Using WebLogic Server v10

Classroom Setup Guide

Web Age Solutions Inc.

Table of Contents

Classroom Requirements.....	3
Part 1 - Minimum Hardware Requirements	3
Part 2 - Minimum Software Requirements	3
Part 3 - Software Provided.....	4
Part 4 - Important Ghosting or Imaging Information.....	5
Software Installation.....	6
Part 1 - Preparation.....	6
Part 2 - Installing JDK 1.5 update 14.....	7
Part 3 - Installing MySQL 5.0.51.....	12
Part 4 - Installation of Eclipse JEE Europa 3.0.3.....	25
Part 5 - Installing WebLogic Server v10.0.....	28

Classroom Requirements

Part 1 - Minimum Hardware Requirements

- 1000 Mhz Pentium IV
- 1 GB RAM minimum, 2 GB recommended
- 8 GB in the hard disk
- USB port

Part 2 - Minimum Software Requirements

- Microsoft Windows 2000 SP4 / Windows XP
- Internet Explorer 6.0
- WinZip 8
- WebLogic Server v10.0 *
- Eclipse 3.3 (Europa) Edition *
- MySQL v5 *
- JDK 5.0 Update 14 *

* - indicates software provided as part of the courseware.

Part 3 - Software Provided

You will receive one USB memory stick containing the following file:

- WA1625.ZIP

All other software listed under Minimum Software Requirements is either commercially licensed software that you must provide or software that is freely available off the Internet.

Part 4 - Important Ghosting or Imaging Information

The software for this course can be ghosted.

Software Installation

Part 1 - Preparation

__1. Create a user called **wasadmin** with password **wasadmin** and grant this user administrative access.

__2. Restart the computer and log in as **wasadmin**.

__3. From the USB memory stick, extract the **WA1625.ZIP** file to C:\

__4. Review that the following folders were created:

- C:\LabFiles
- C:\Software\
- C:\Software\JDK 5.0 Update 14

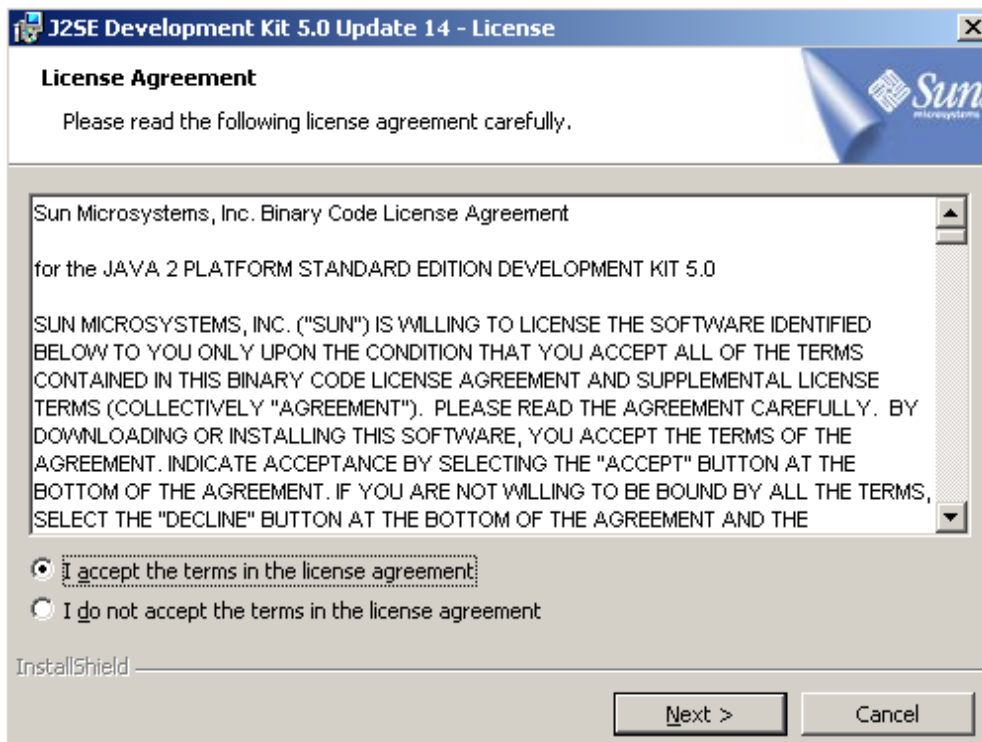
__5. Review that the following files were created:

- C:\Software\mysql-essential-5.0.51a-win32.msi
- C:\Software\oepe-europa-all-in-one-1.0.0.20080808135653-win32.zip
- C:\Software\server100_win32.exe
- C:\Software\JDK 5.0 Update 14\jdk-1_5_0_14-windows-i586-p.exe

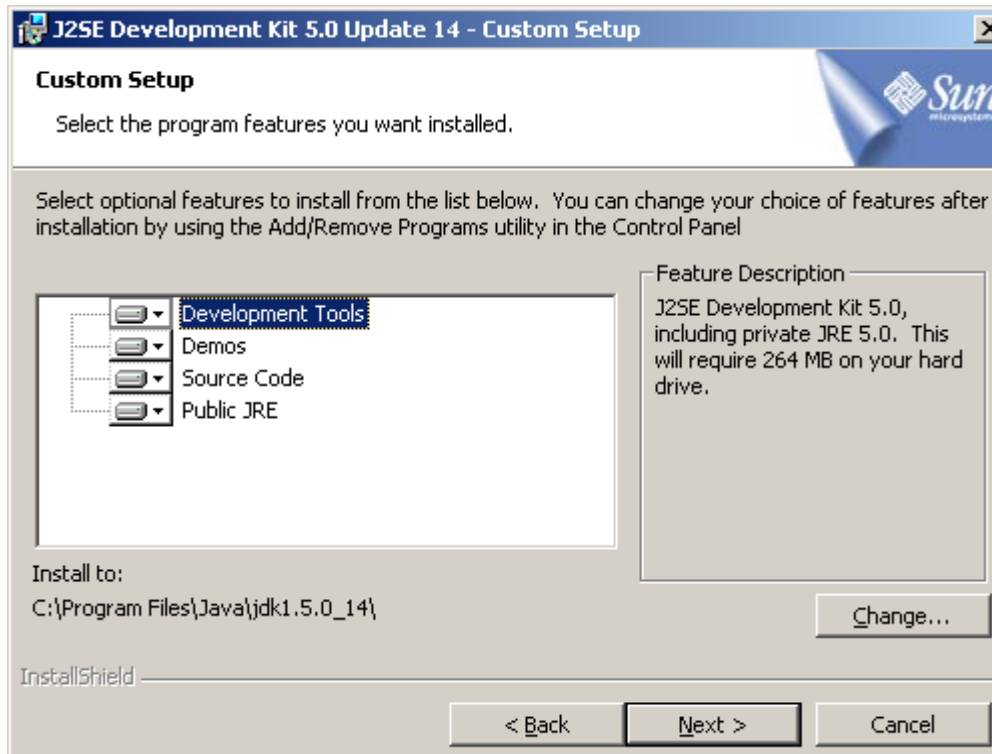
Part 2 - Installing JDK 1.5 update 14

__1. Run the `jdk-1_5_0_14-windows-i586-p.exe` file from the `C:/Software/JDK 5.0 Update 14` folder.

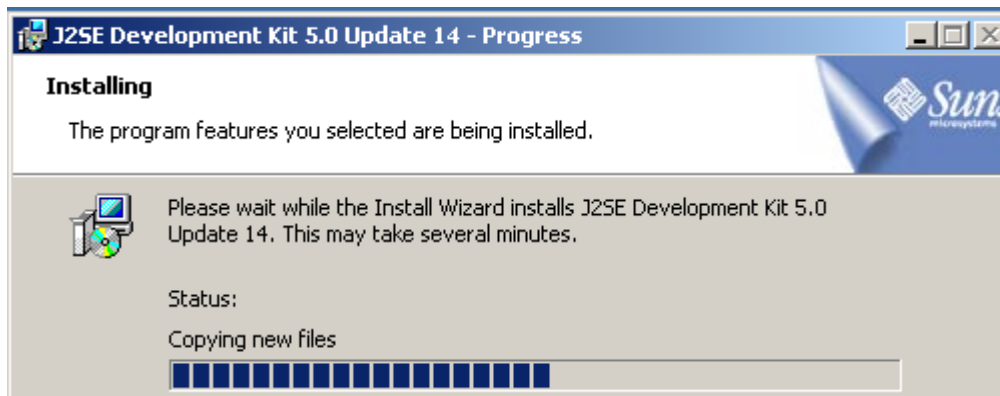
__2. The installation wizard will open. Accept the License Agreement and click **Next**.



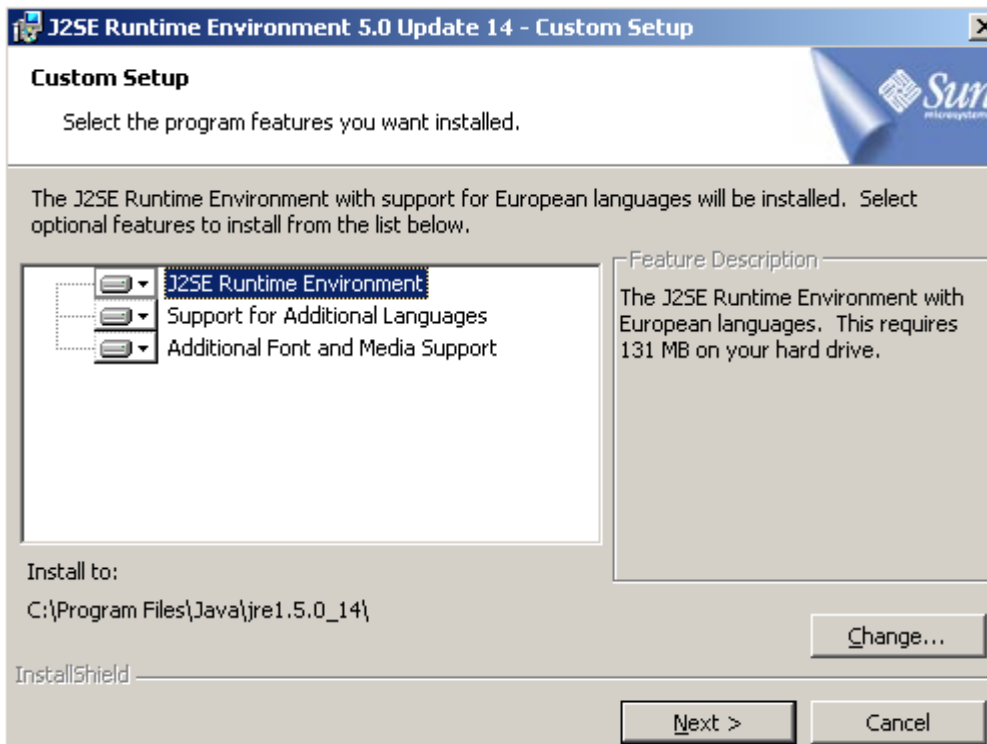
3. Leave the defaults on the *Custom Setup* screen and click **Next**.



4. The software will start installing some of the components. Wait for it to complete.



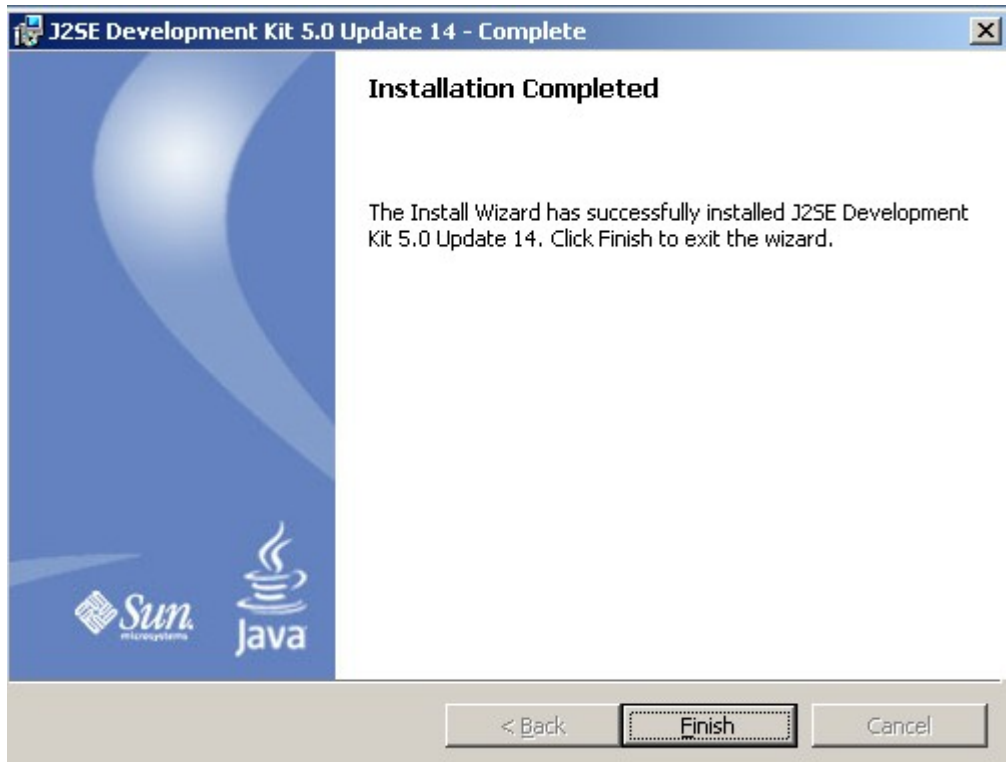
__5. Accept the defaults for the language support options and click **Next**.



__6. Accept the defaults for browser registration and click **Next**.

__7. Wait for the installation to complete.

__8. When the **Installation Completed** message appears, click **Finish**.



JDK 5.0 Update 14 is installed.

Part 3 - Installing MySQL 5.0.51

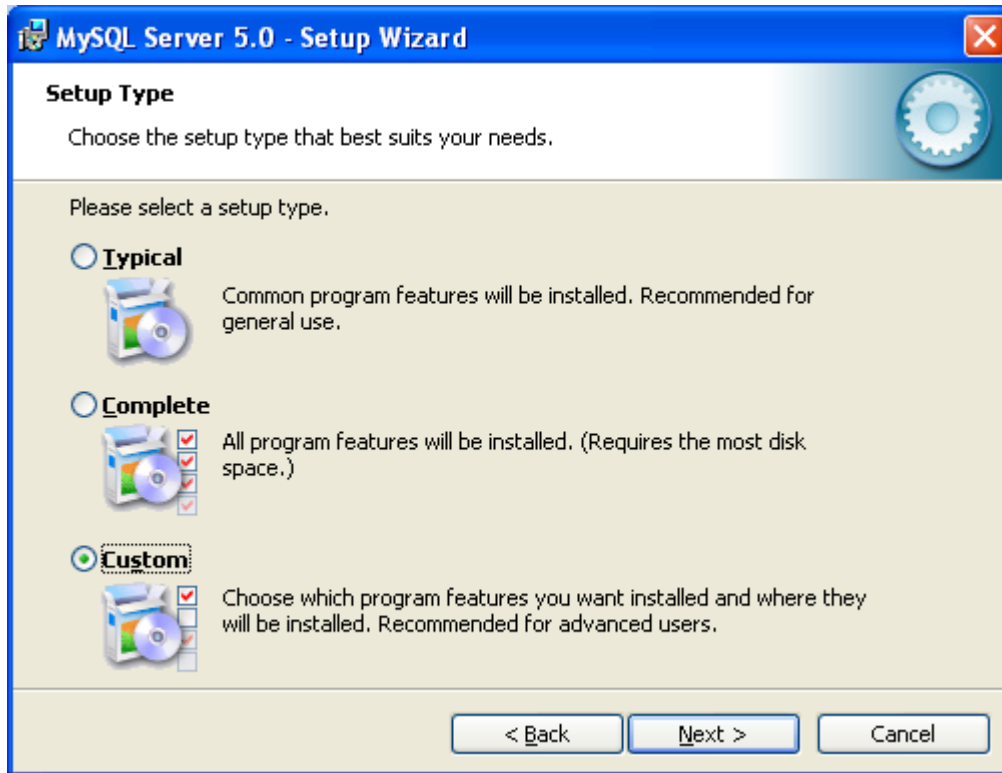
__1. From C:\Software, launch **mysql-essential-5.0.51a-win32.msi**

The **Setup Wizard** window will launch.



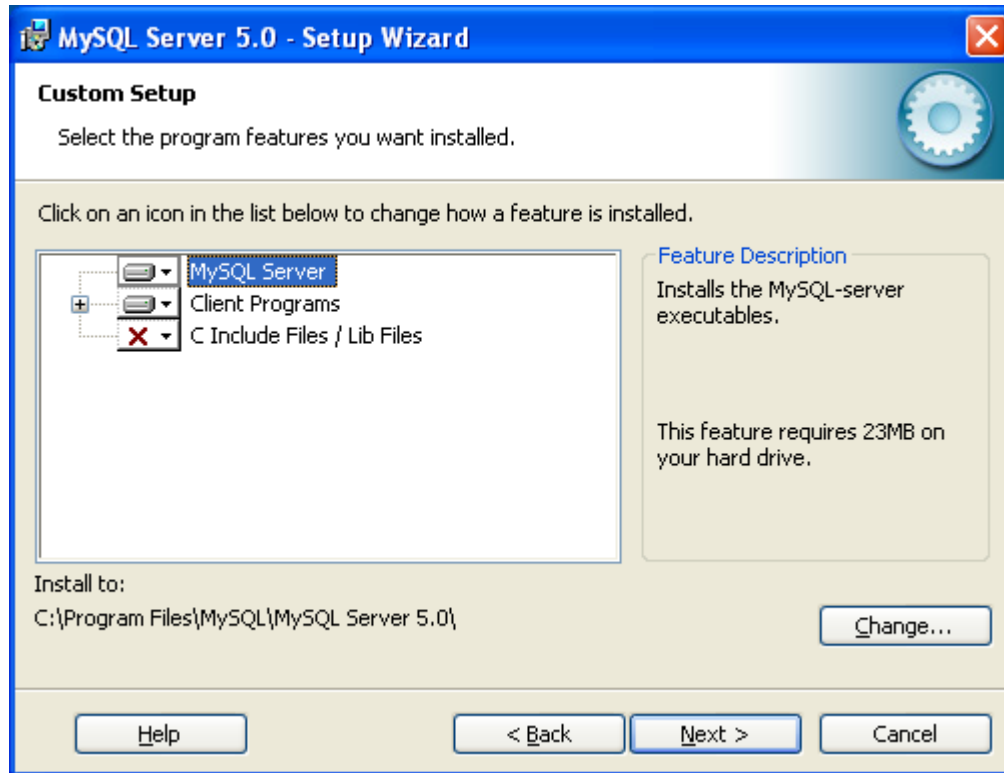
__2. Click **Next**.

__3. The **Setup Type** window will appear. Select **Custom** as shown below.



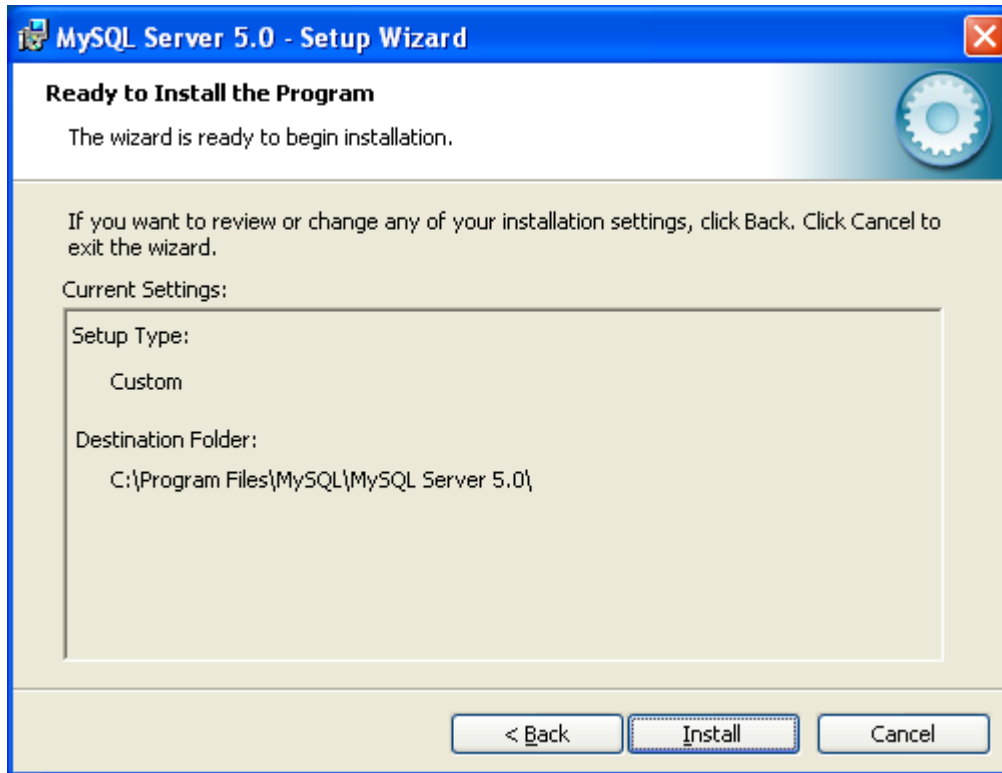
__4. Click **Next**.

The **Custom Setup** window will appear.



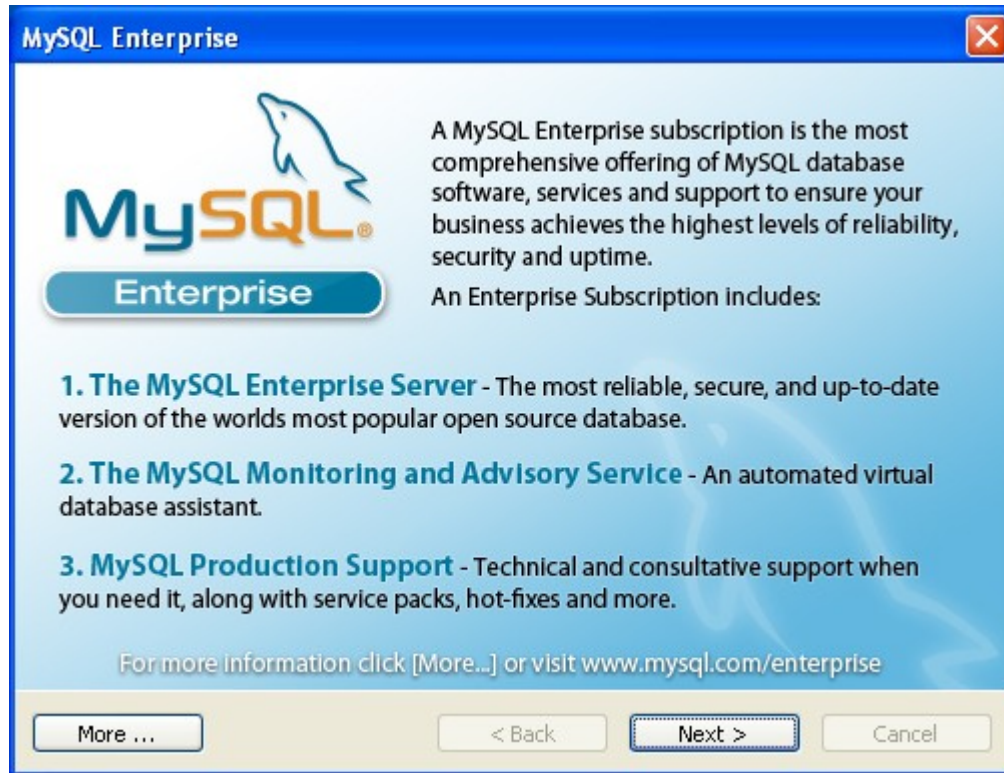
__5. Accept the defaults and click **Next**.

The **Ready to Install the Program** window will appear.



__6. Click **Install**.

The installation will start and the **MySQL Enterprise** window will appear



__7. Click **Next**.

The **MySQL Monitoring and Advisory Service** window will appear



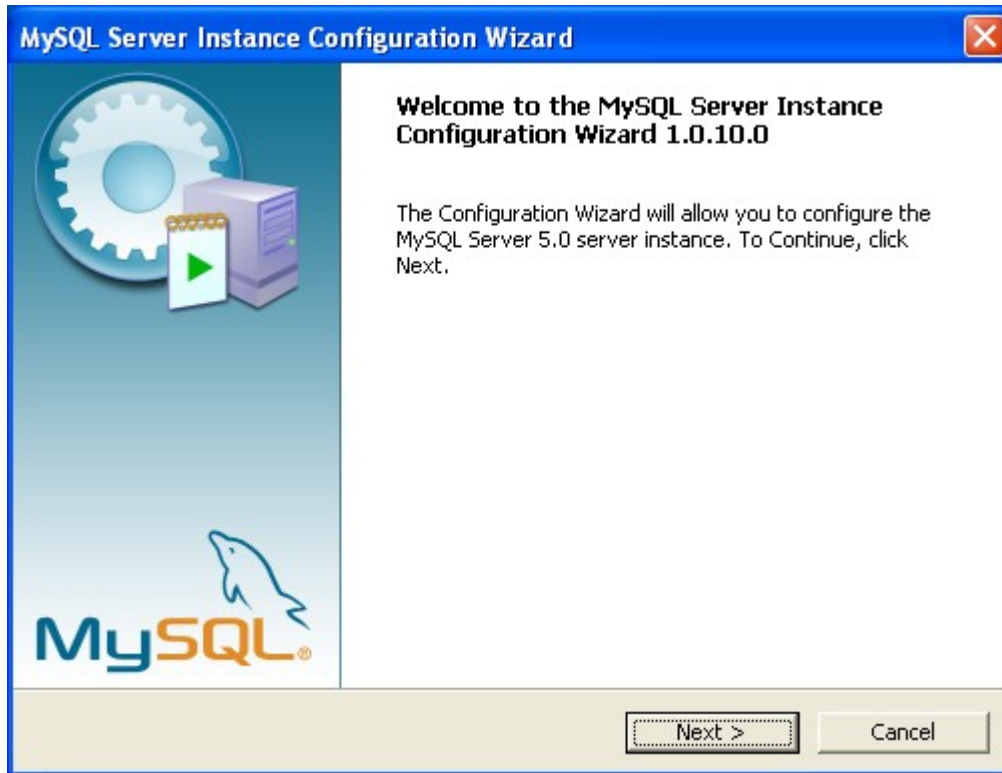
__8. Click **Next**.

The **Wizard Completed** window will appear.



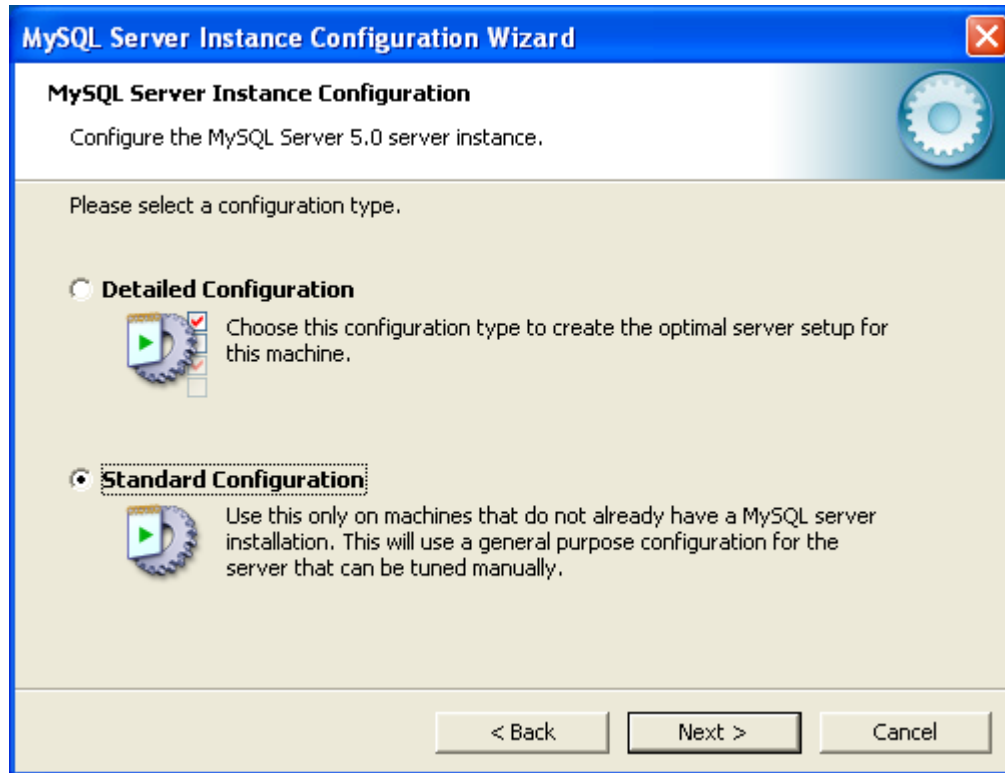
__9. Make sure the **Configure the MySQL Server now** option is checked and click **Finish**.

The **MySQL Server Instance Configuration Wizard** window will appear.



__10. Click **Next**.

__11. In the Instance Configuration window, select **Standard Configuration**.



__12. Click Next.



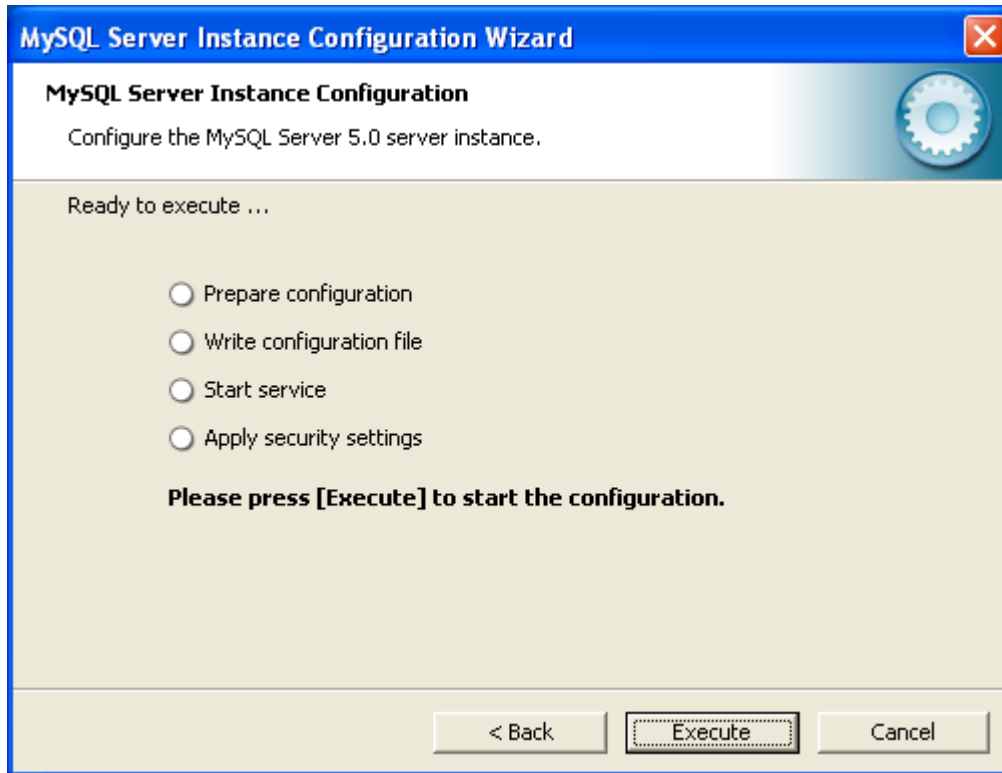
__13. Accept the defaults and click **Next**.

The Security options window will appear.



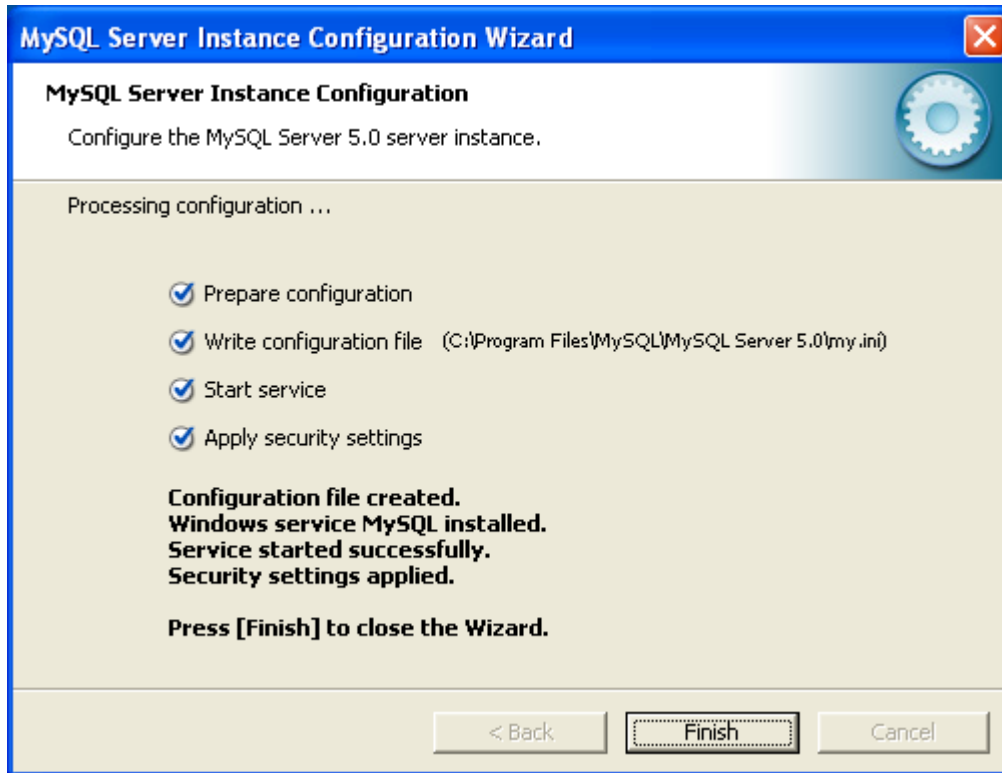
__14. For the **New root password** and **Confirm** fields, enter **password** and then click **Next**.

The Ready to Execute window will appear.



__15. Click **Execute**.

The database will configure. This will take a moment. Eventually, you should see the following:



__16. Click **Finish**.

MySQL has been installed.

Part 4 - Installation of Eclipse JEE Europa 3.0.3

__1. From C:\Software extract

oepe-europa-all-in-one-1.0.0.20080808135653-win32.zip

directly under C:\

The **c:\eclipse** folder will be created.

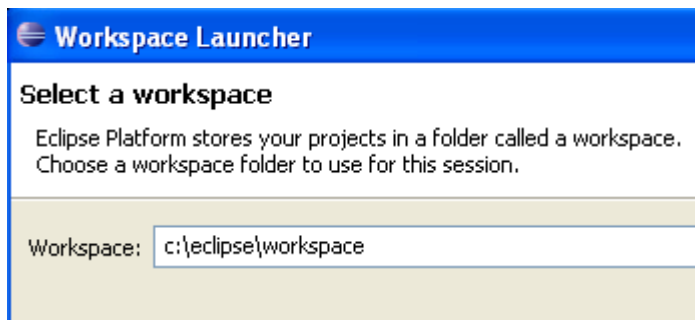
__2. Run **c:\eclipse\eclipse.exe**

Eclipse Europa 3.0.3 will start.



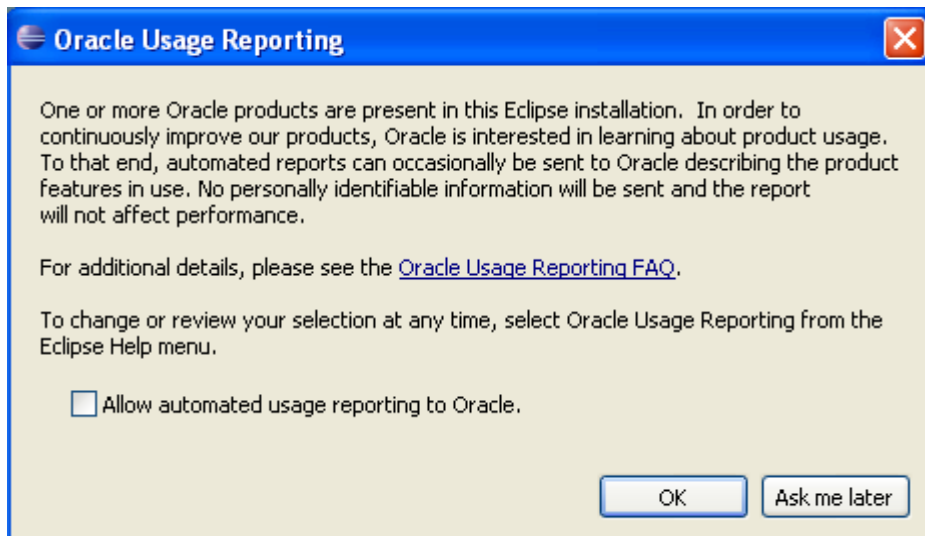
__3. A Workspace Launcher dialog will appear. Change the workspace directory to:

c:\eclipse\workspace



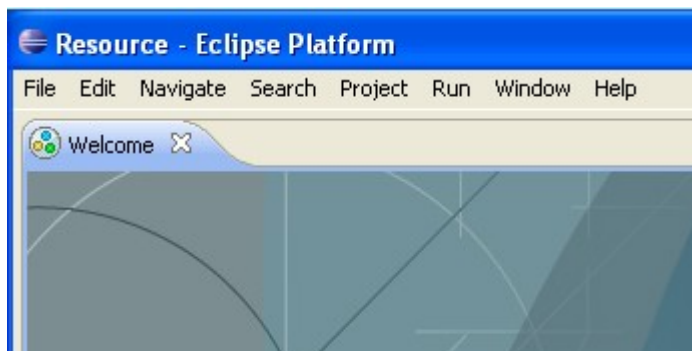
__4. Click **OK**.

__5. Eclipse will open and the *Oracle Usage Reporting* dialog will open. Uncheck the **Allow automated usage reporting to Oracle** check option.



__6. Click **OK**.

The Welcome page will open.



__7. Close the *Eclipse welcome* page by clicking the X at top left.

__8. From the menu, select **File > Exit** to close Eclipse.

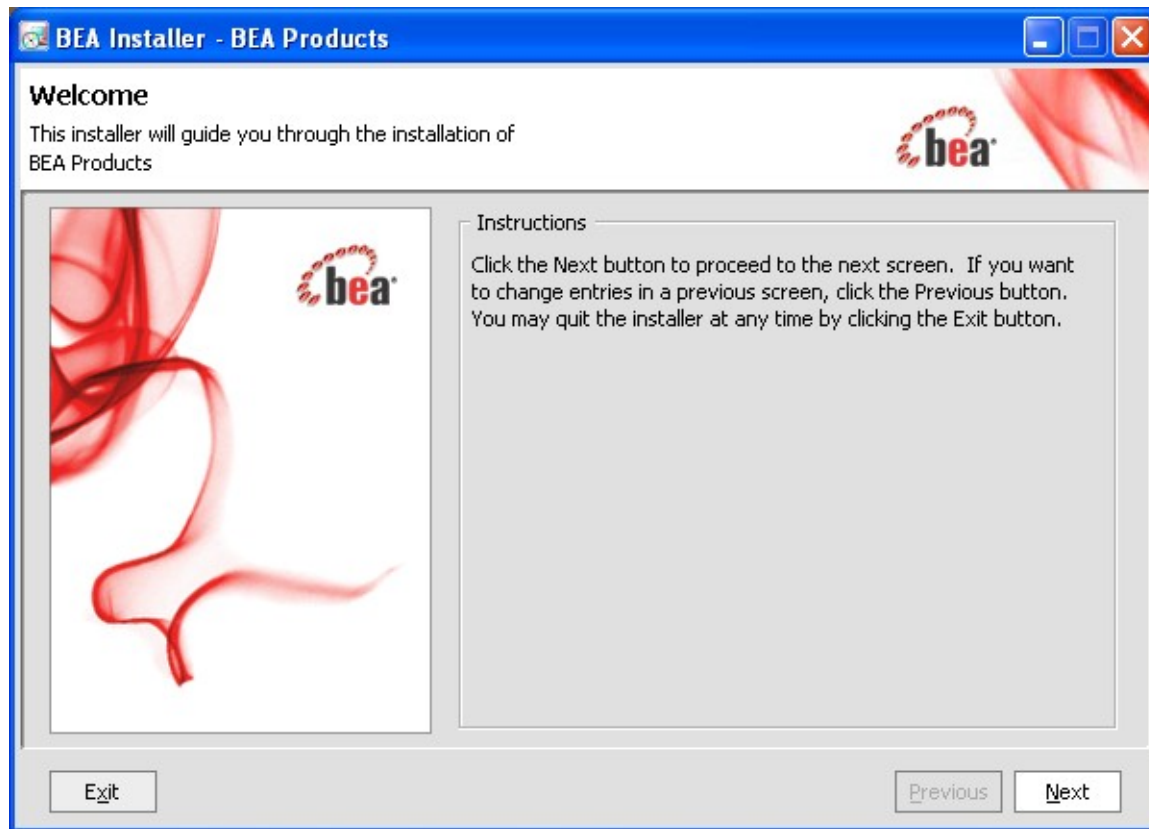
Eclipse Ganymede 3.0.3 is working fine.

Part 5 - Installing WebLogic Server v10.0

__1. Locate **C:\Software\server100_win32.exe** and launch it. The installation process will start. This may take a minute. Be patient.

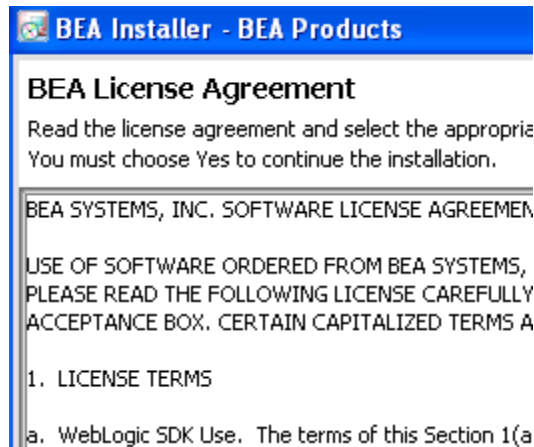


Eventually, you will see the *Welcome* screen.



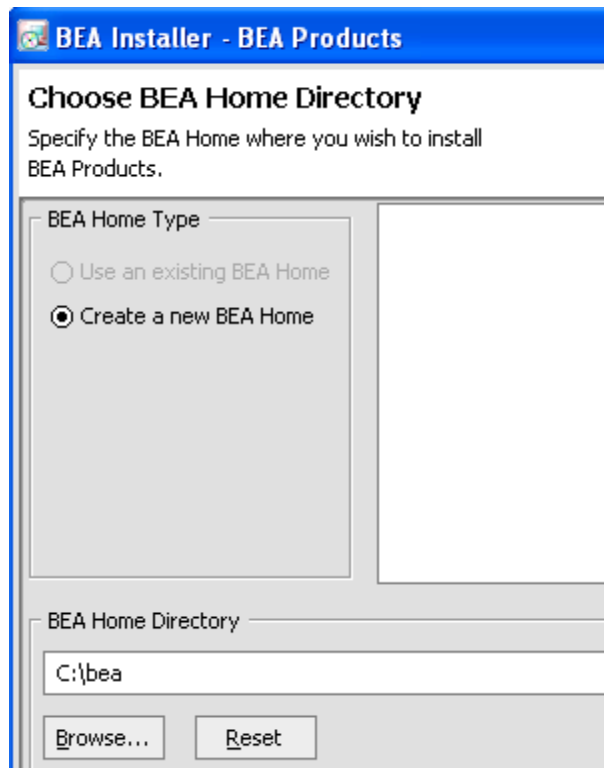
__2. Click **Next**.

You will be shown the license agreement.



__3. Select **Yes** and click **Next**.

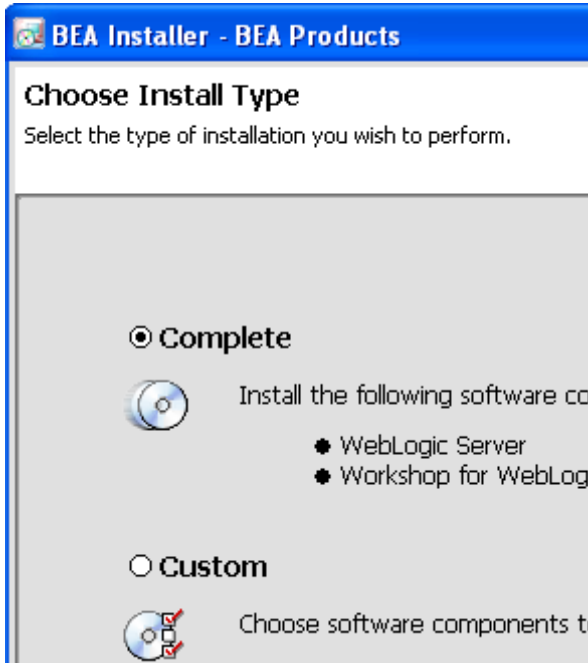
You will be asked to choose a BEA home directory.



__4. This is the directory under which all BEA products will be stored, and is typically referred to as **<BEA_HOME>**. Accept the default (C:\bea) and click **Next**.

__5. You will then be prompted to choose the install type.

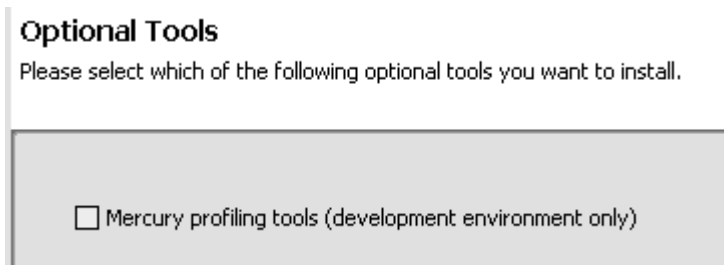
__6. Select **Complete**.



__7. Click **Next**.

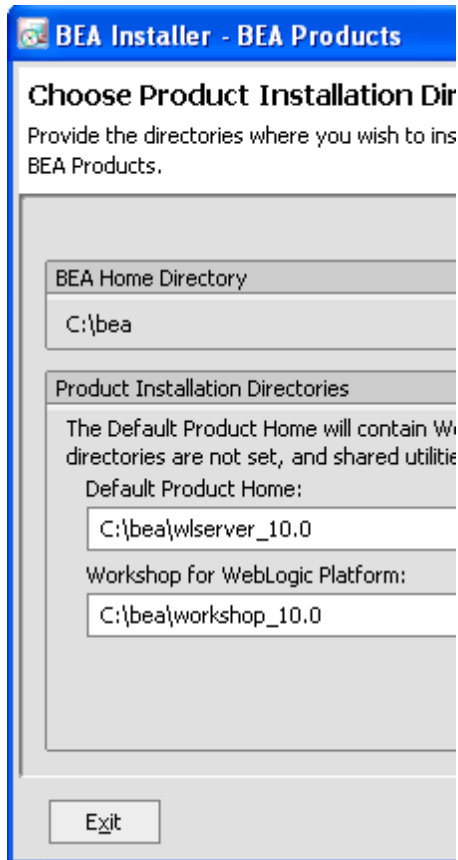
You will be asked if you'd like to install optional tools (specifically, the *Mercury profiling tools*).

__8. *Uncheck* this box. We will not need Mercury.



__9. Click **Next**.

You will be asked to choose product installation directories.



__10. Accept the defaults and click **Next**.

You will be asked to choose a shortcut location.



__11. Leave **“All Users” Start Menu folder** selected and click **Next**.

The installation will begin. Wait a few moments.

Eventually, install will complete.



__12. Uncheck **Run Quickstart** and click **Done**.

You have successfully installed WebLogic Server 10 to your machine.

Congratulations. The installation of WA1625 Web Services Development Using WebLogic Server v10 has been completed.