

WA1568 WebSphere Process Server v6.0 Administration

Classroom Setup Guide

Web Age Solutions Inc.

Table of Contents

Part 1 - Minimum Hardware Requirements	3
Part 2 - Minimum Software Requirements	4
Part 3 - Software Provided.....	5
Part 4 - Important Ghosting or Imaging Information.....	6
Part 5 - Instructions.....	7
Part 6 - Installing DB2 v8.2 Enterprise Server Edition.....	8
Part 7 - Installing WebSphere Integration Developer v6.0.2.....	23

Part 1 - Minimum Hardware Requirements

- Pentium 4 - 1.4GHz or higher
- 2GB RAM minimum.
- 10GB free hard disk space (preferably in C: drive).
- Network connectivity to the internet. Note: Some of the lab exercises require functioning Internet access.
- USB port

Part 2 - Minimum Software Requirements

- Windows 2000 SP4, Windows XP SP2
- Adobe Acrobat Reader 6.0 (or higher)
- Winzip 8.0 (or higher)
- Internet Explorer 6, Firefox Mozilla 1.5 (or higher)
- WebSphere Process Server 6.0.2 (WPS v6.0.2) *
- WebSphere Integration Developer 6.0.2 (WID v6.0.2) *
- DB2 Universal Database Enterprise Server Edition 8.2 (DB2 UDB ESE v8.2) *

* - indicates software provided as part of the courseware.

Part 3 - Software Provided

Number of USB memory sticks that you will receive: 2

Name of the files containing in the memory sticks (one file per memory stick):

- **WA1568_1.ZIP**
- **WA1568_2.ZIP**

All other software listed under Minimum Software Requirements is either commercially licensed software that you must provide or software that is freely available off the Internet.

Part 4 - Important Ghosting or Imaging Information

Some of the software installed for this course will not function after changing the computer hostname. As such, cloning or imaging should not be used on a fully installed system.

You can save time by extracting the contents of the USB memory stick to C:\ on a clean OS install (no other software installed) and then imaging that hard drive. After restoring the image to the other computers and changing the hostnames, you can then install the software on each computer individually by following the instructions that are detailed later in this document.

Part 5 - Instructions

__1. Create a user called **wasadmin** with password **wasadmin** and grant this user administrative access.

__2. Restart the computer and log in as **wasadmin**.

__3. From a USB memory stick, extract the **WA1568_1.ZIP** file to **C:**

__4. From a USB memory stick, extract the **WA1568_2.ZIP** file to **C:**

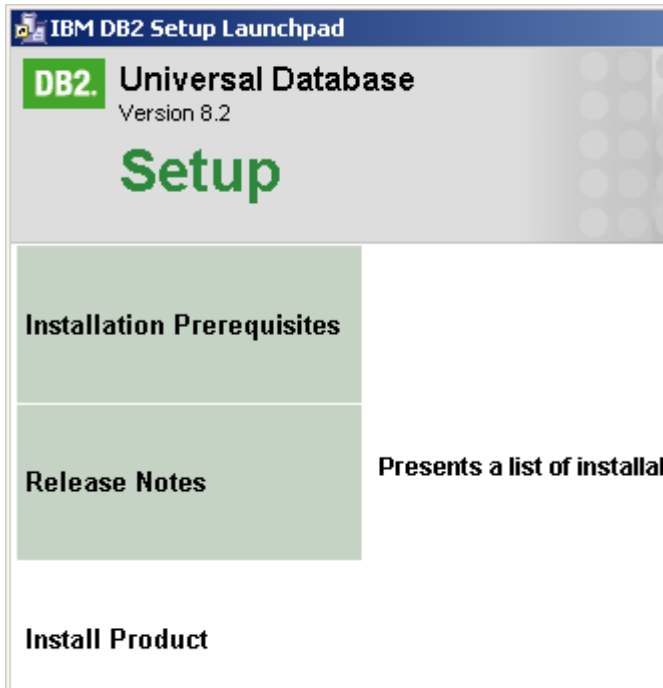
__5. Review that the following folders were created:

- **C:\LabFiles**
- **C:\Software\DB2 8.2 ESE**
- **C:\Software\WID 602**
- **C:\Software\WPSv602**

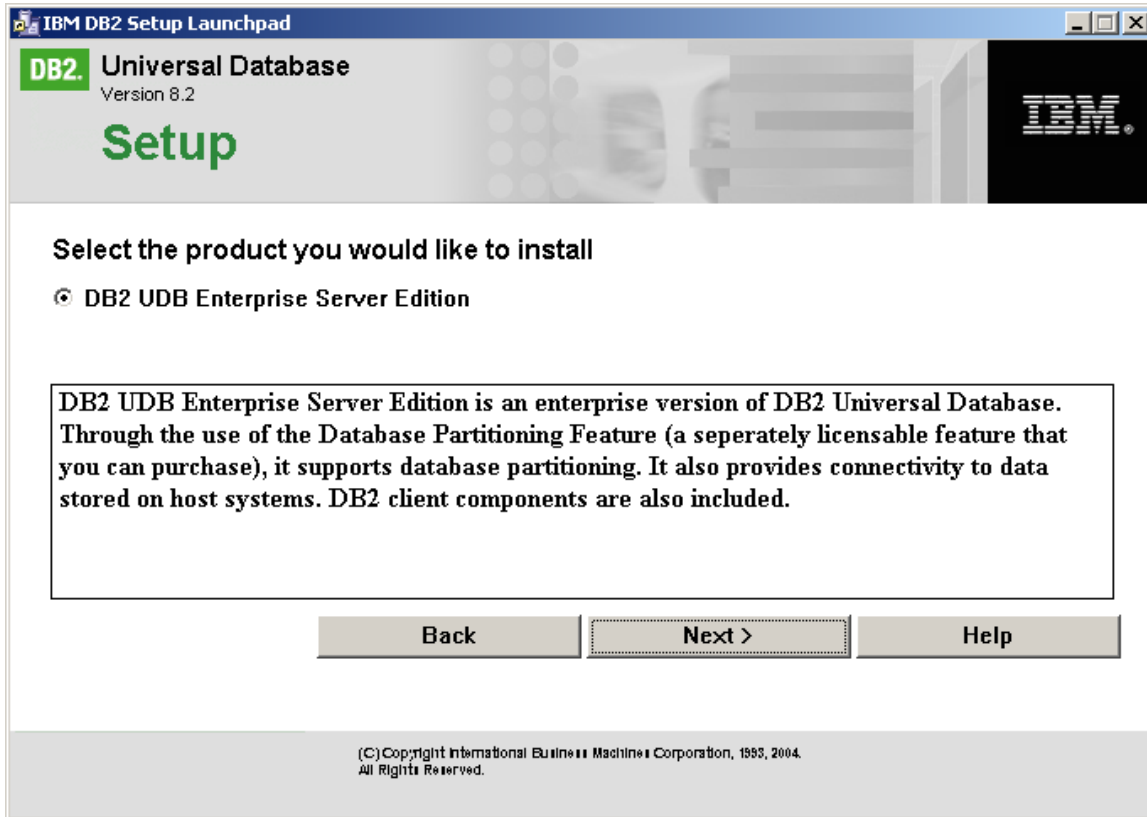
Part 6 - Installing DB2 v8.2 Enterprise Server Edition

__1. Browse to **C:\Software\DB2 8.2 ESE** and launch **setup.exe**.

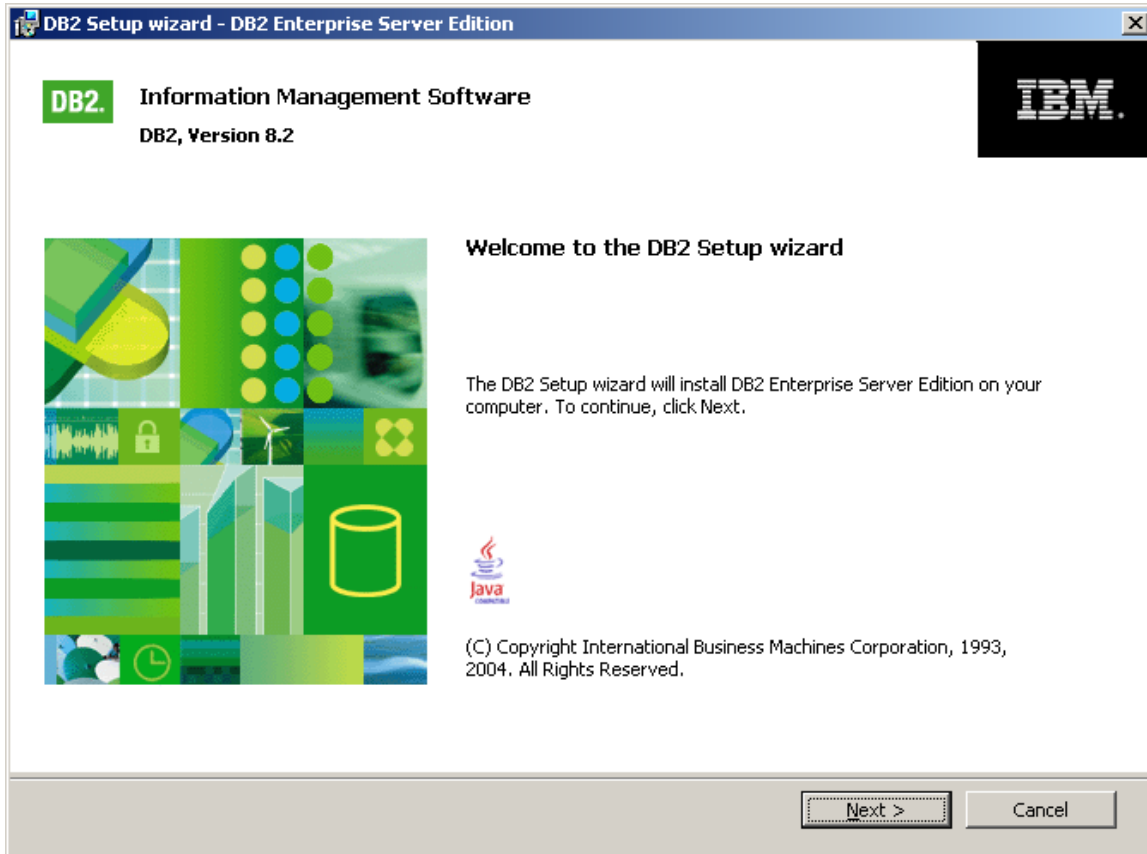
The Setup launcher should appear.



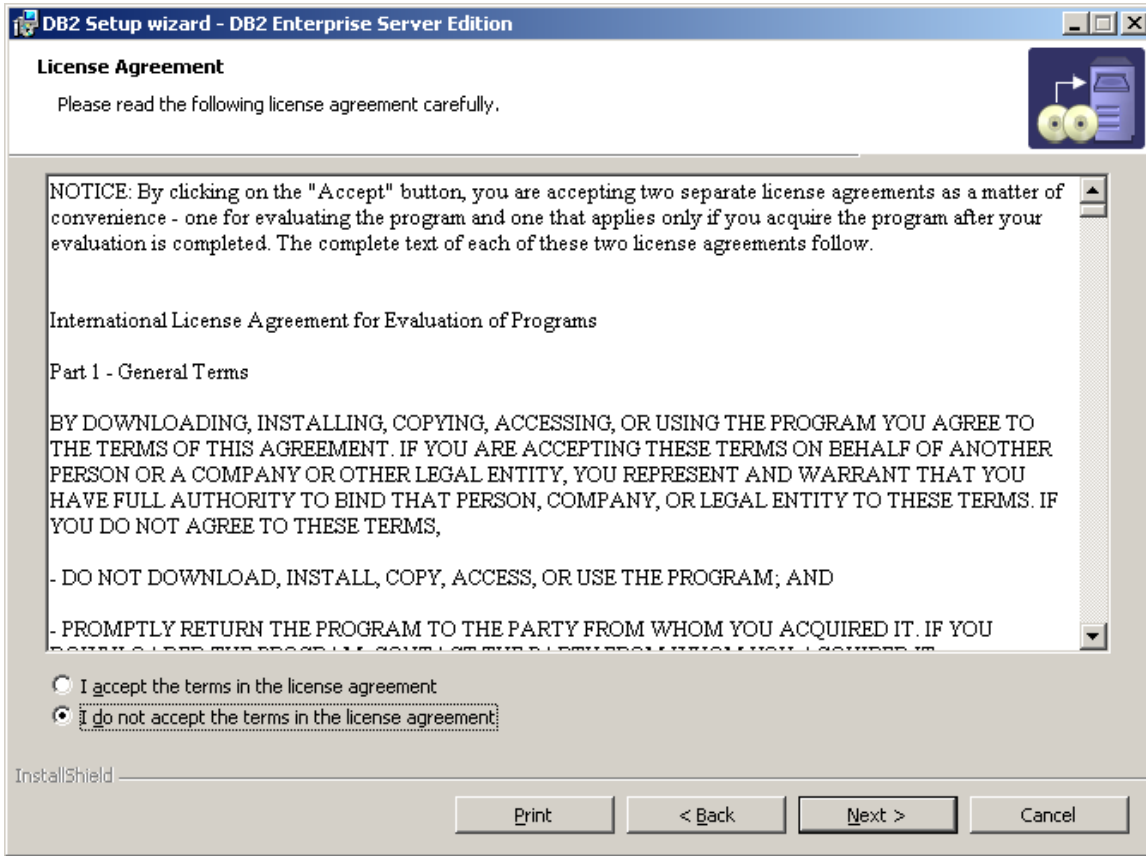
__2. Click **Install Product**.



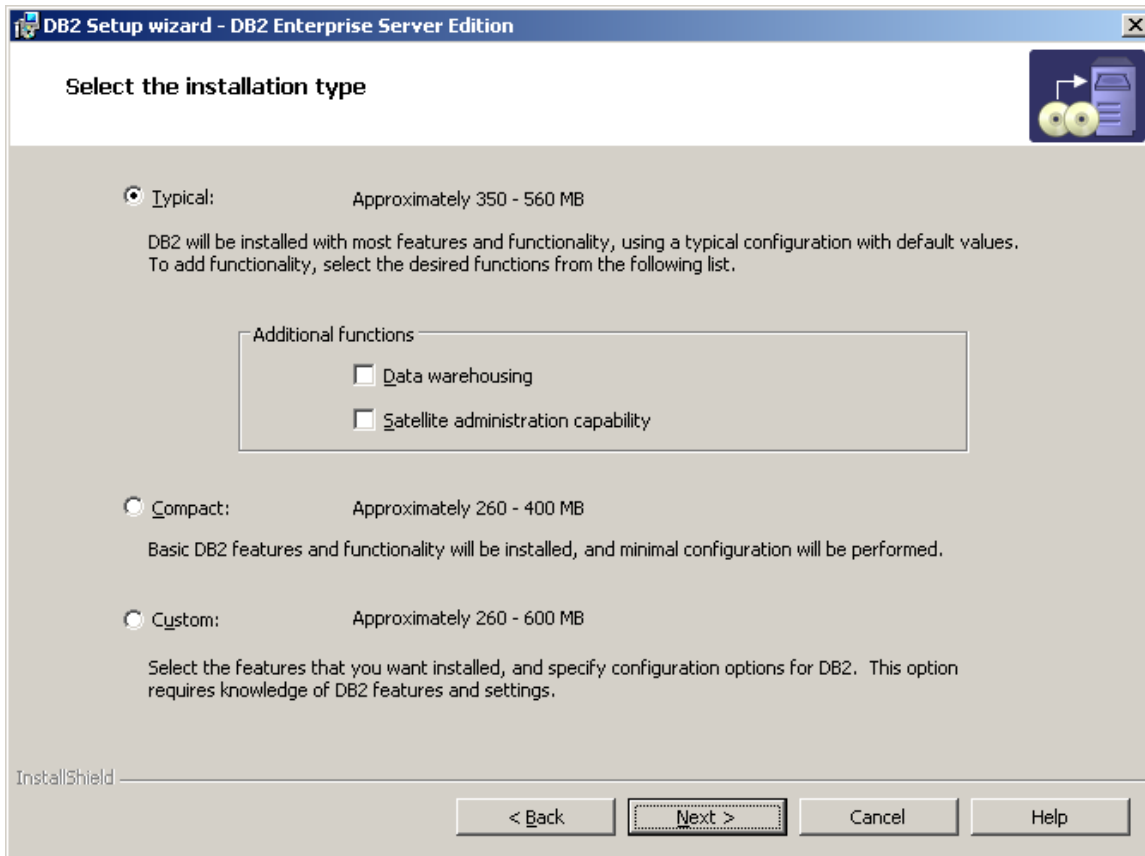
__3. Click Next.



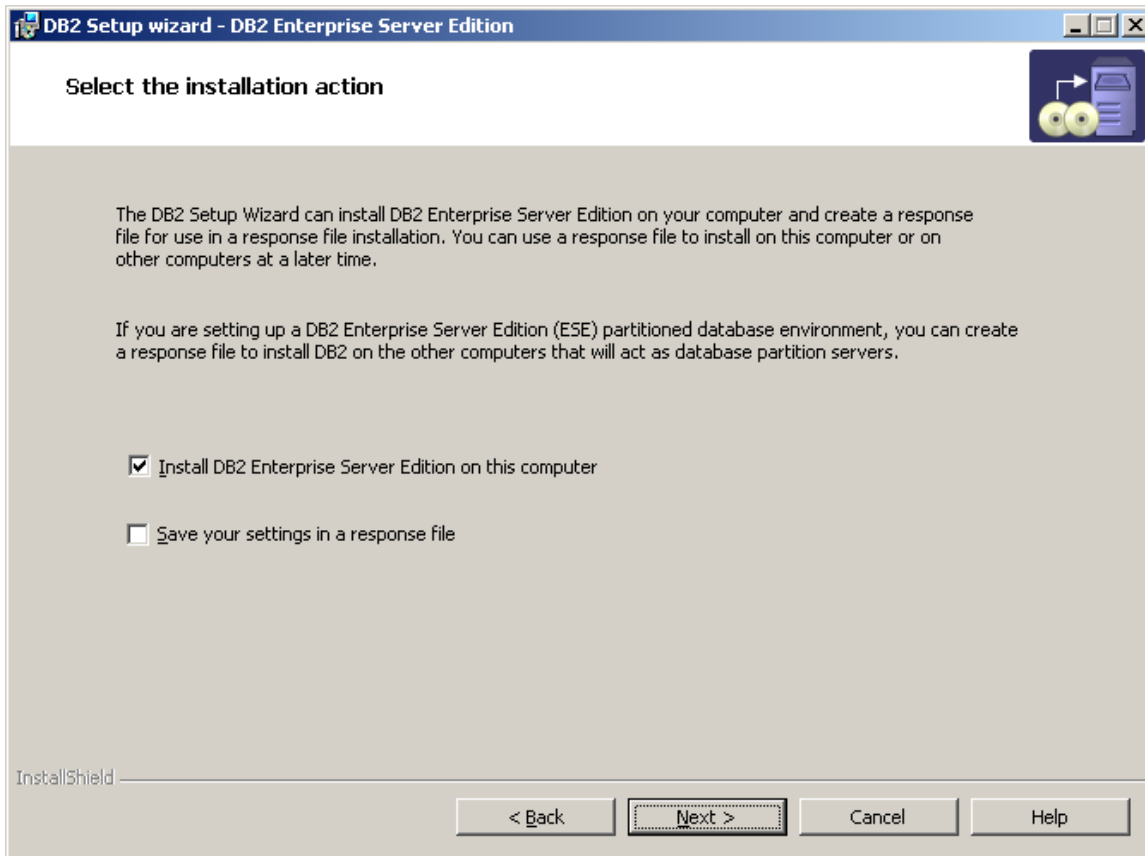
__4. Click Next.



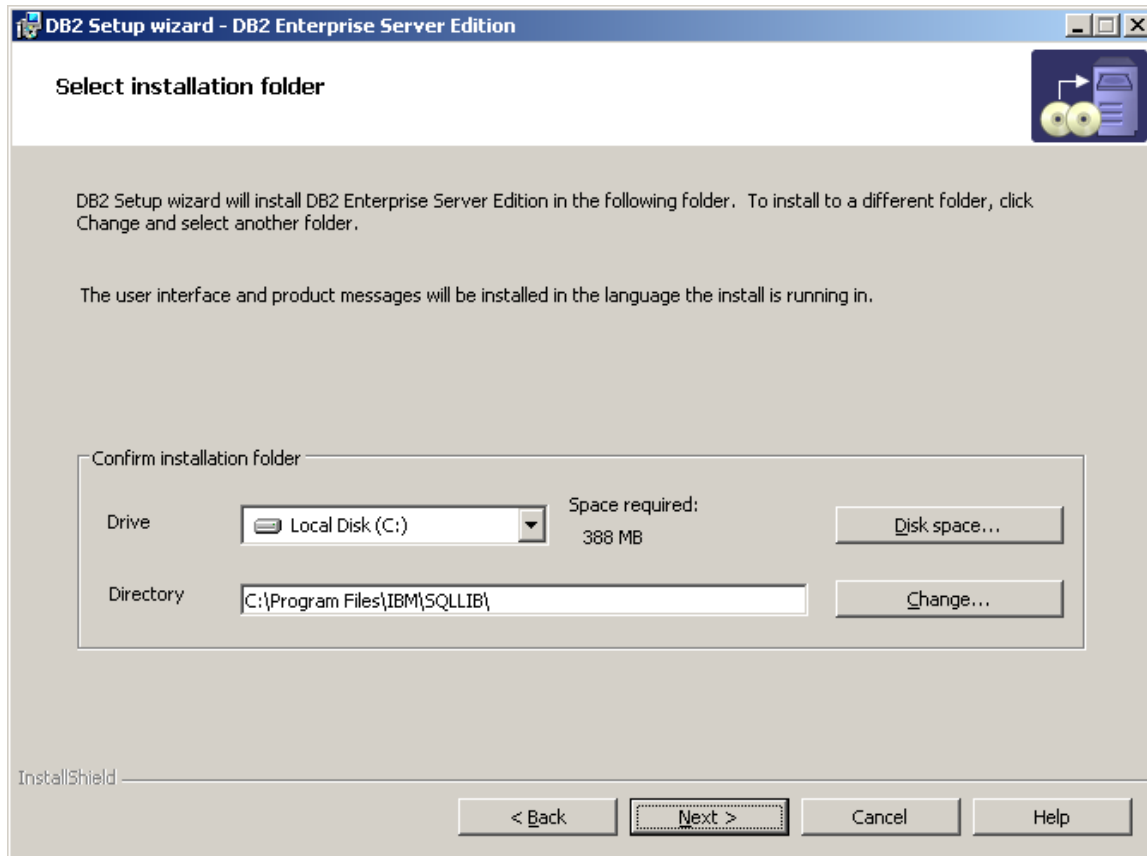
__5. Accept the terms of the license agreement and click **Next**.



6. Leave the defaults and click **Next**.



__7. Leave the defaults and click **Next**.



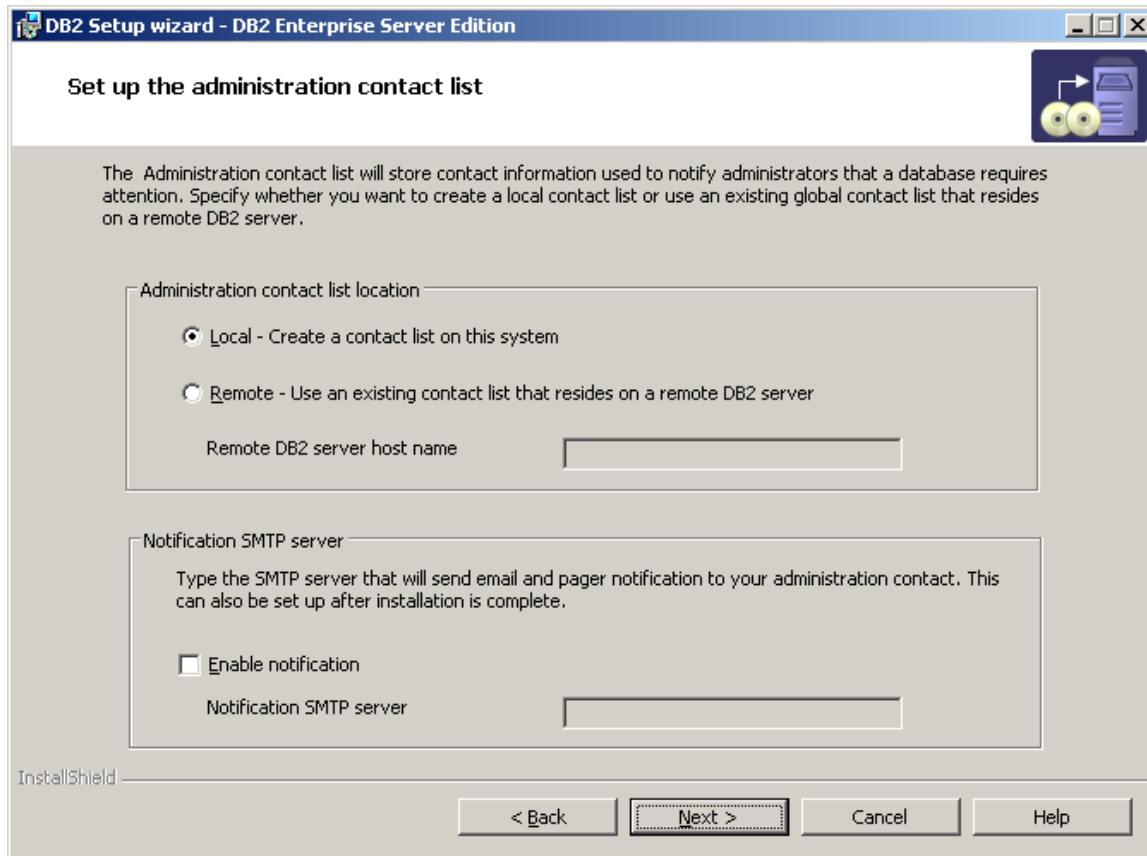
__8. Accept the default location and click **Next**.

9. Change the **User name** and **Password** (and **Confirm Password**) to **db2admin**

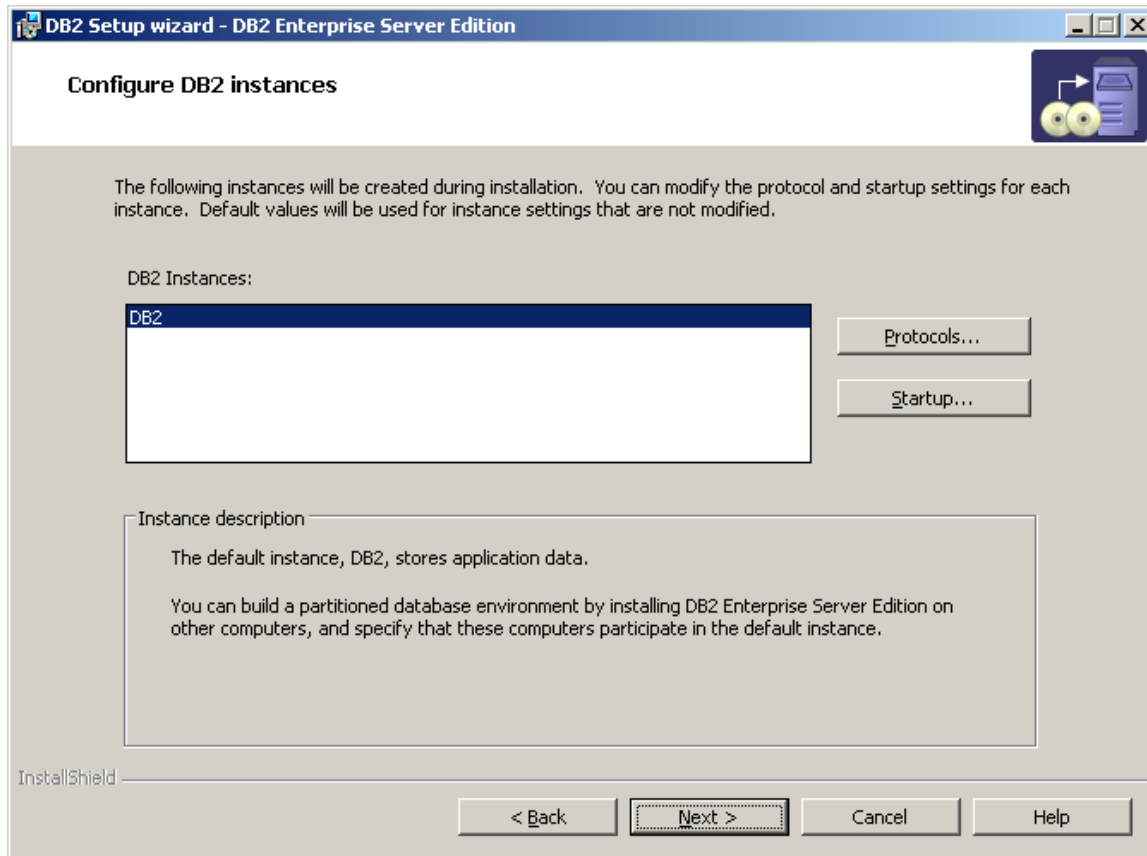
The screenshot shows a window titled "DB2 Setup wizard - DB2 Enterprise Server Edition". The main heading is "Set user information for the DB2 Administration Server". Below this, there is a text box that reads: "Enter the user name and password that the DB2 Administration Server (DAS) will use to log on to your system. You can use a local user or a domain user." The "User information" section contains four input fields: "Domain" (a dropdown menu), "User name" (containing "db2admin"), "Password" (containing "*****"), and "Confirm password" (containing "*****"). A checkbox labeled "Use the same user name and password for the remaining DB2 services" is checked. At the bottom, there are four buttons: "< Back", "Next >", "Cancel", and "Help".

IMPORTANT: You must set the user name and password to **db2admin** since this password is used during the Labs.

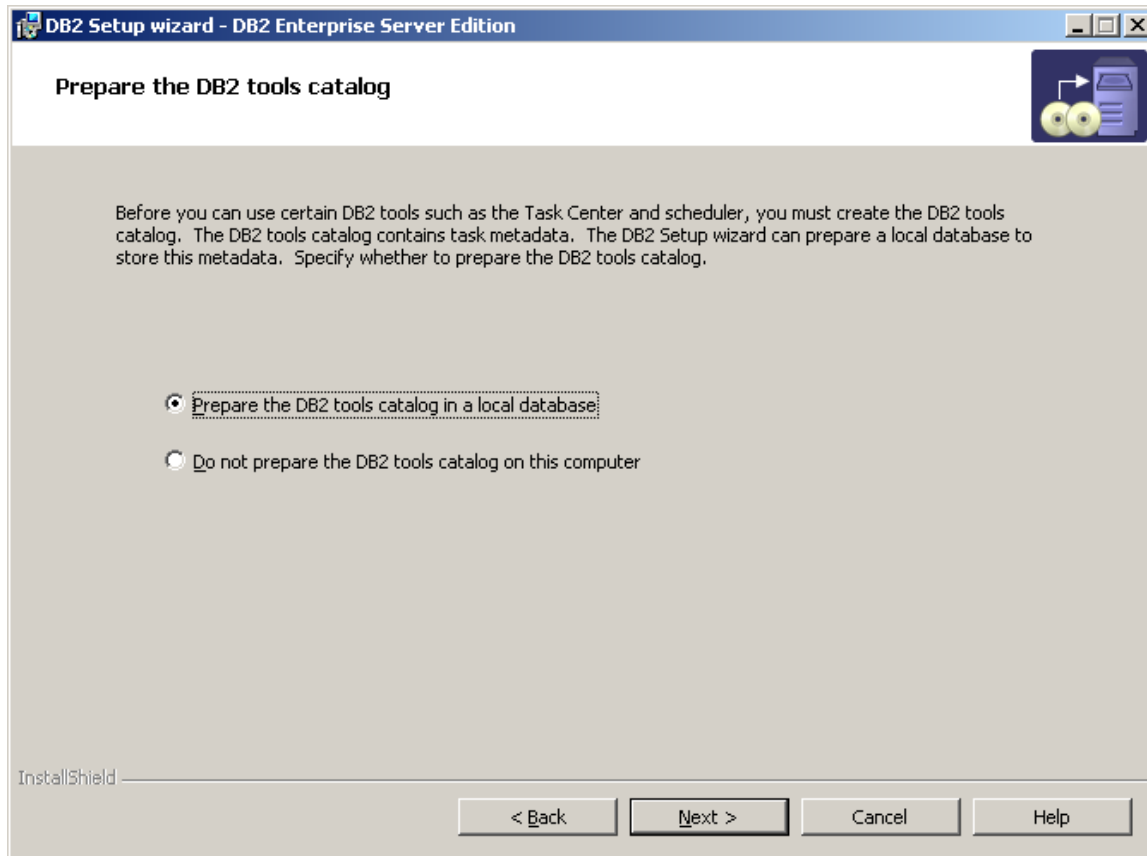
10. Click **Next**.



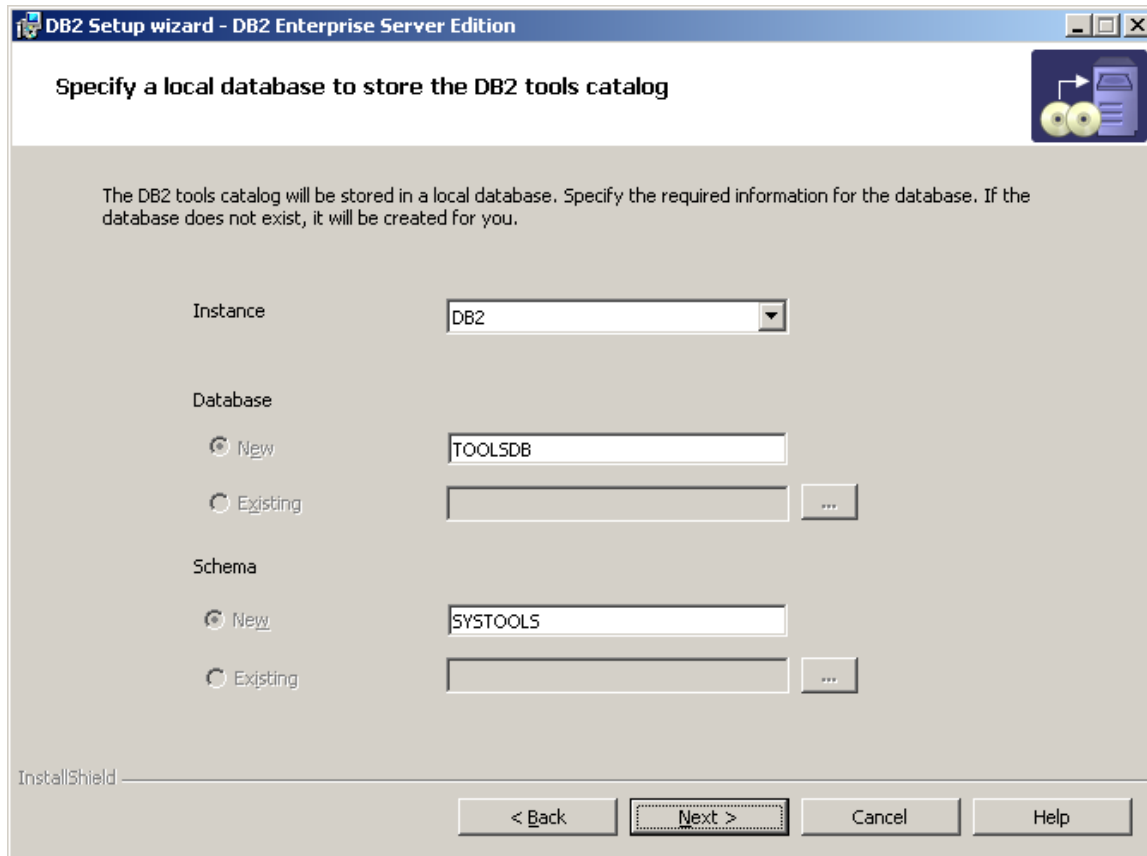
__11. Accept the defaults and click **Next**. A warning window will appear telling you that no SMTP server has been specified. Click **OK**.



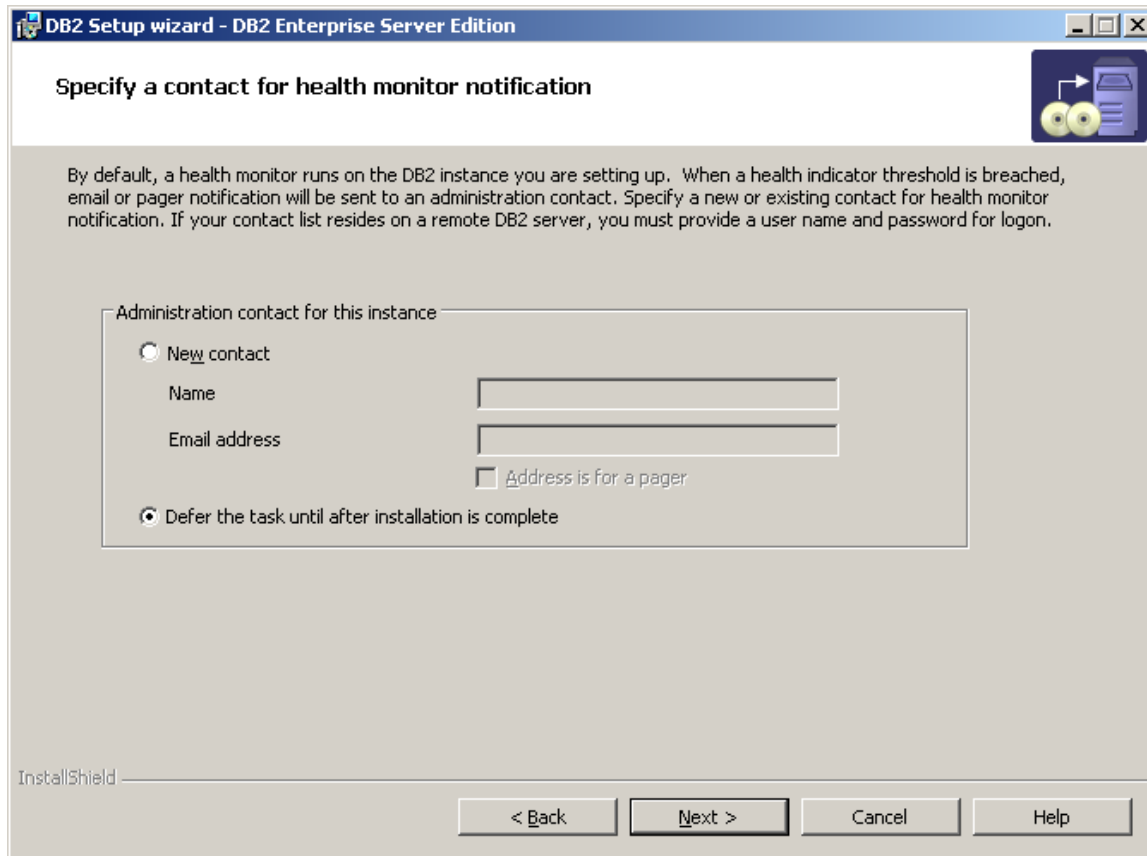
__12. Click **Next**.



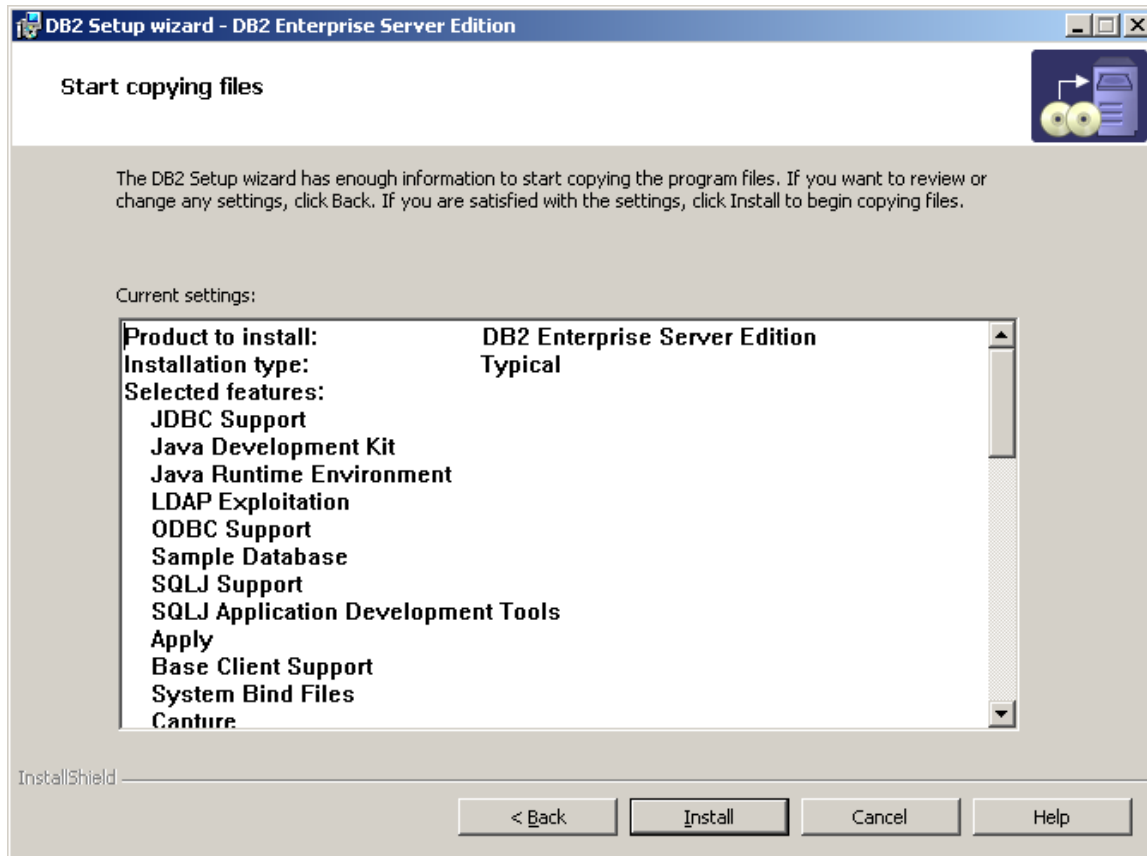
__13. Check **Prepare the DB2 tools catalog in a local database** and click **Next**.



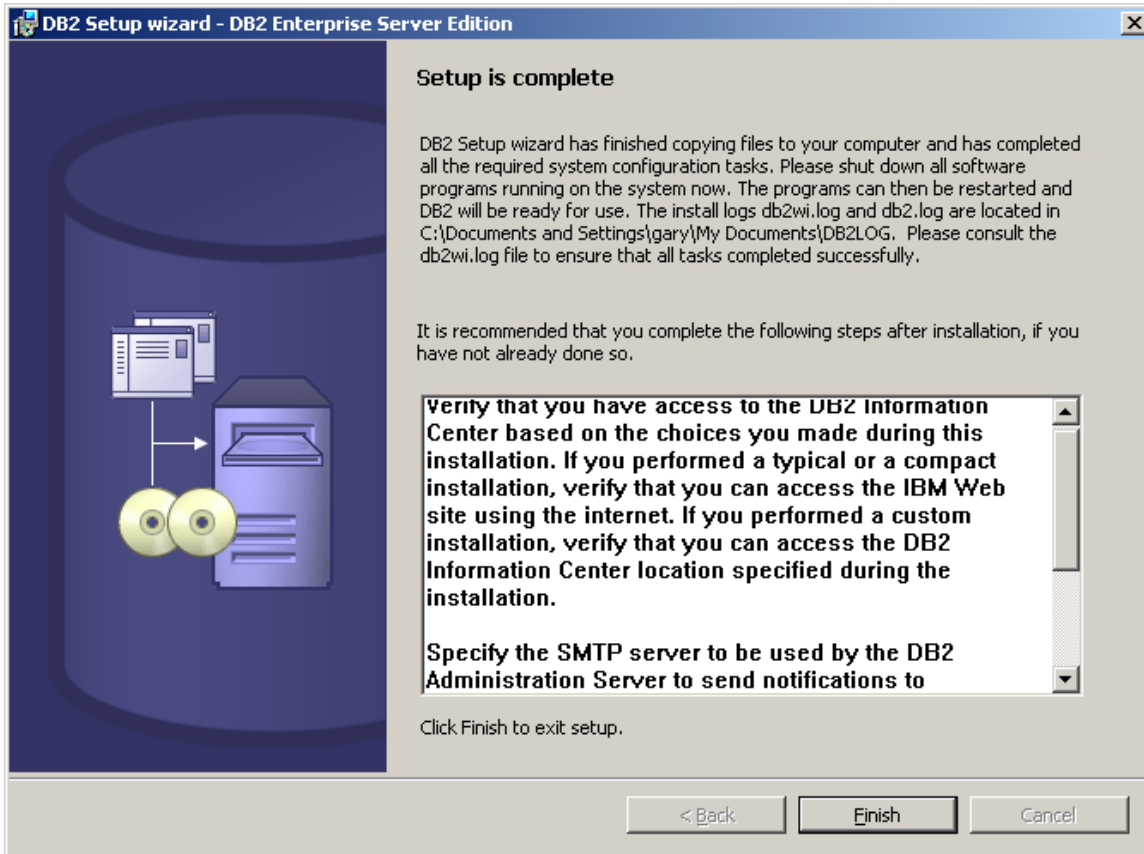
__14. Click **Next**.



__15. Check **Defer the task until after installation is complete** and click **Next**.



__16. Click **Install** and DB/2 will begin installing. This may take a few minutes.



__17. Eventually, set up will complete. Click **Finish**.

__18. The **First Steps Launchpad** will appear. We do not need it. Click the **Exit First Steps** button to dismiss it. (If you are informed that new updates are available, click **No** ignore it).

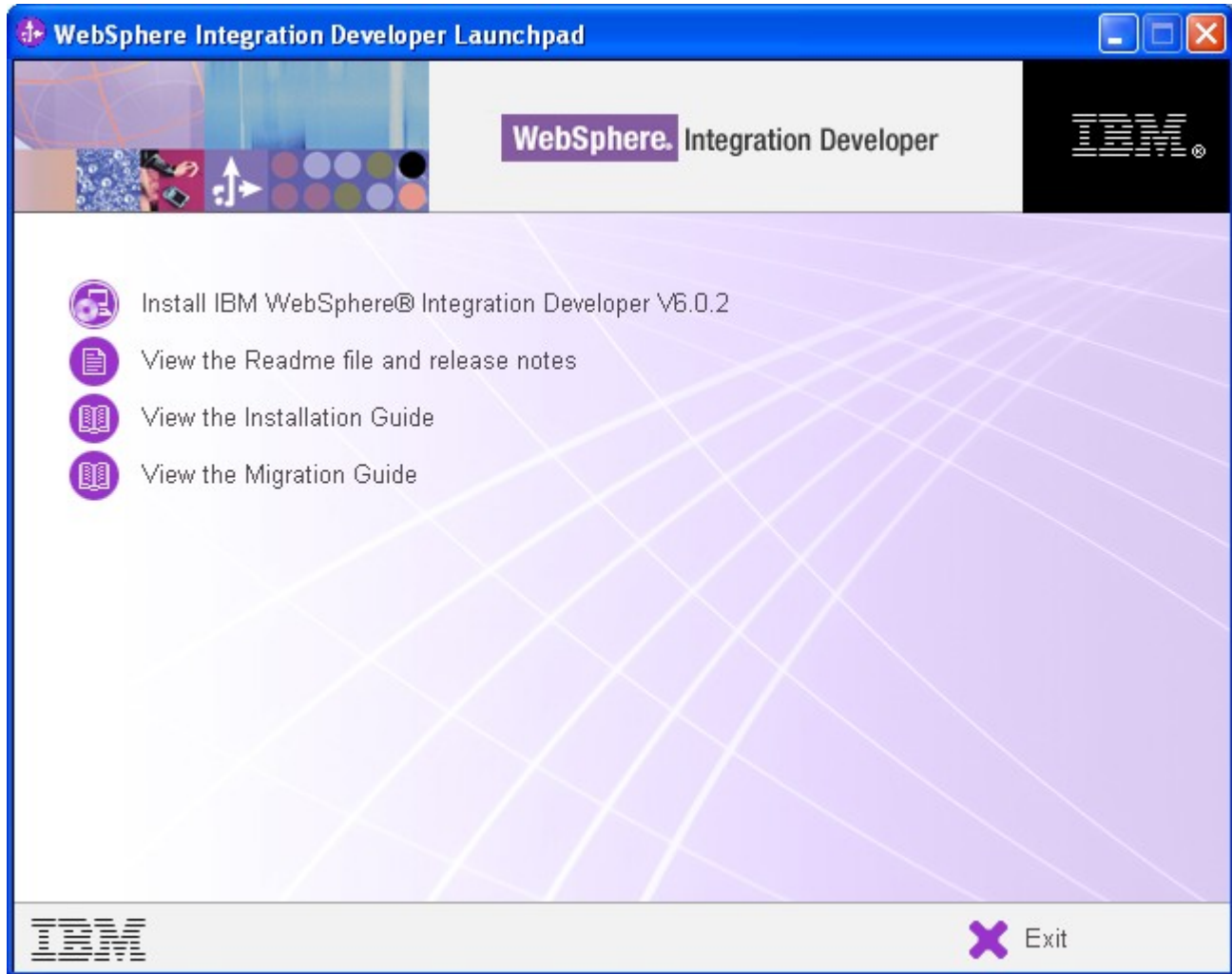
__19. Restart Windows.

__20. Login as wasadmin with password wasadmin. You must login with the *wasadmin* user since this user is used during the exercises.

Congratulations. DB2 8.2 Enterprise Server Edition is installed.

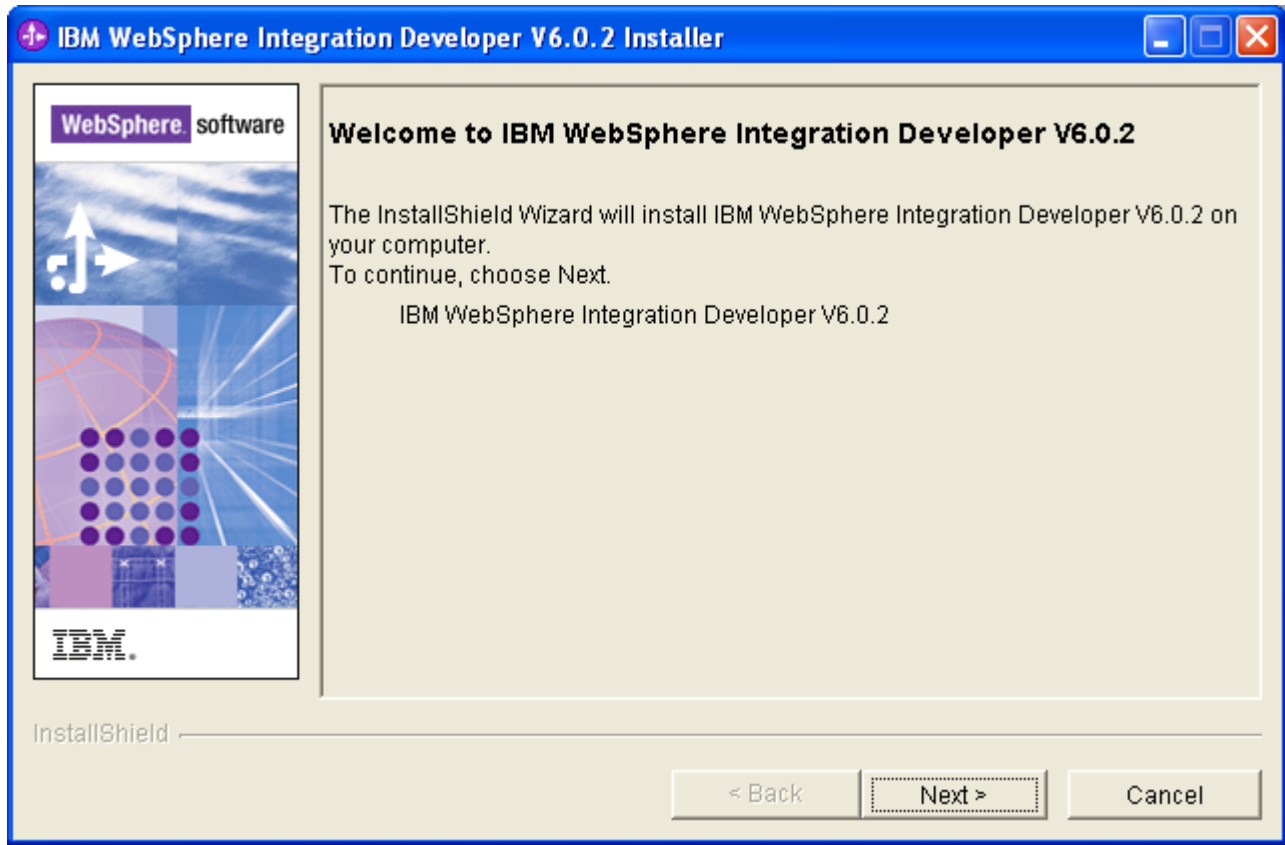
Part 7 - Installing WebSphere Integration Developer v6.0.2

__1. From C:\Software\WID 602\disk1, run **launchpad.exe**.

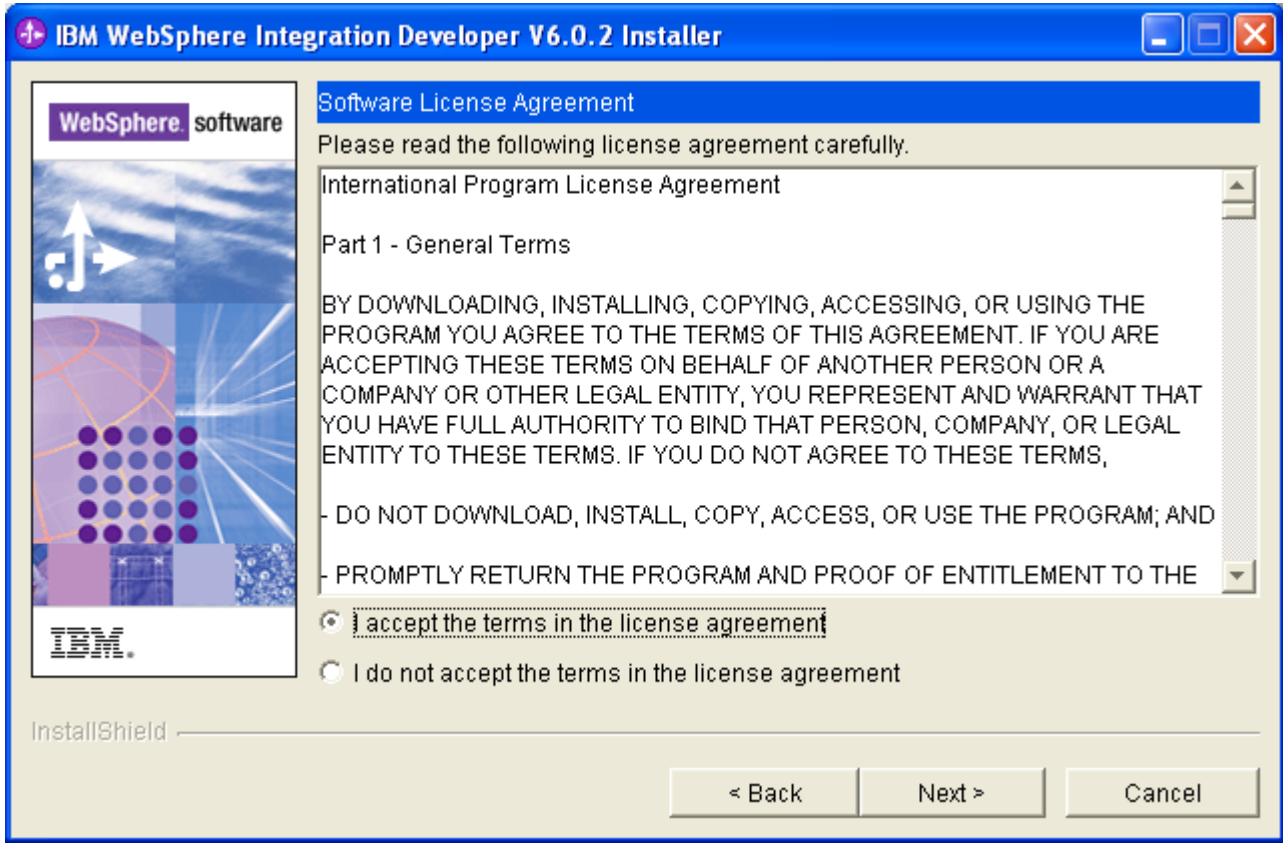


__2. Click on **Install IBM WebSphere Integration Developer V6.0.2**.

__3. Click **Next** in the Welcome screen.

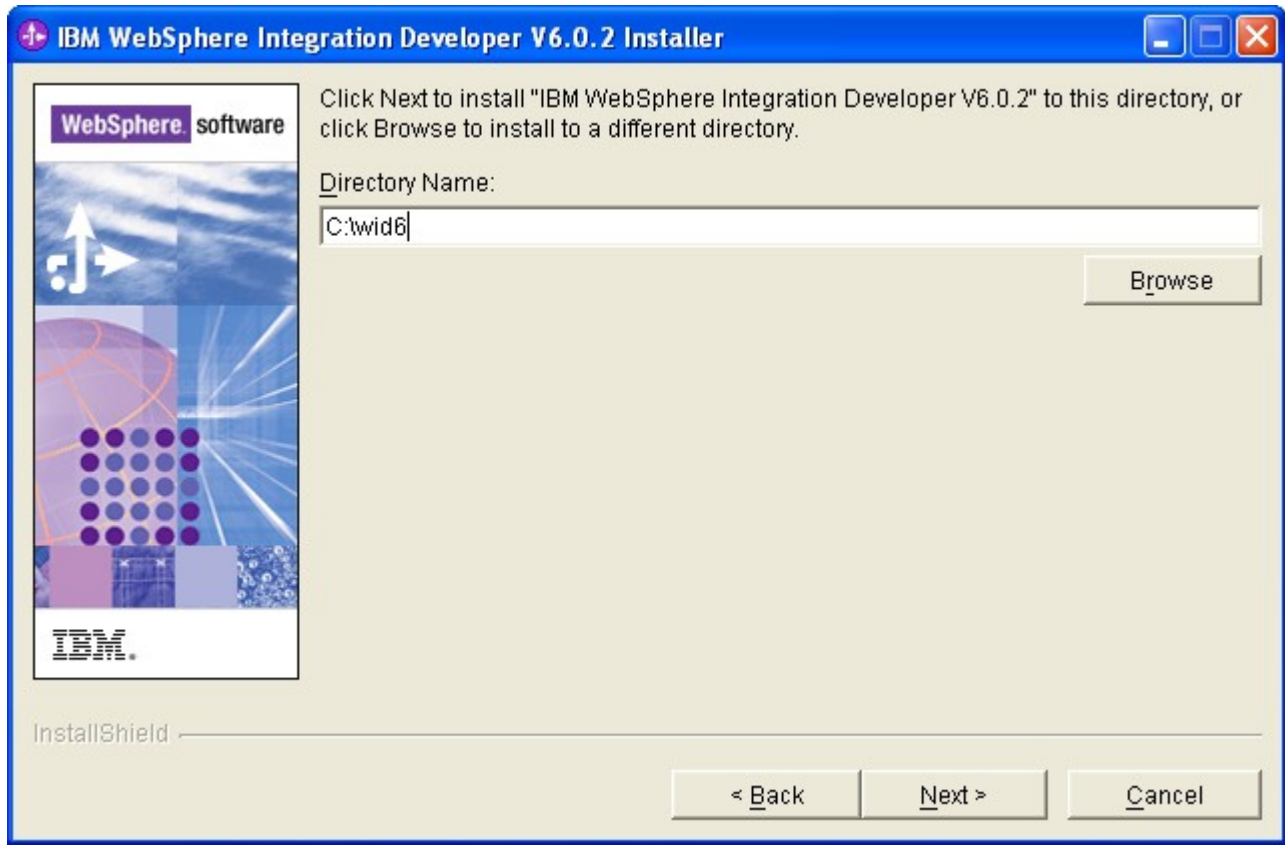


__4. Accept the license terms and click **Next**.

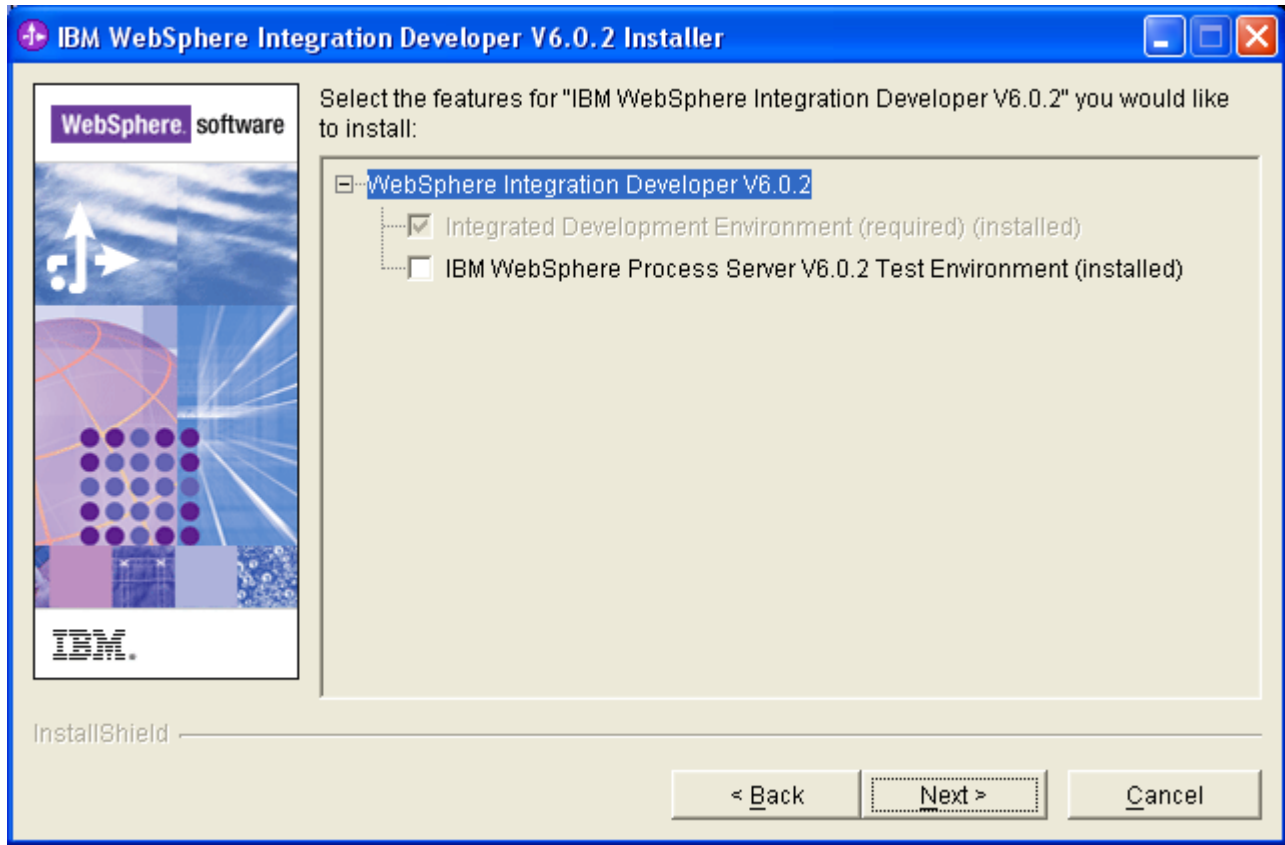


__5. Change the installation location to **C:\wid6** and click **Next**.

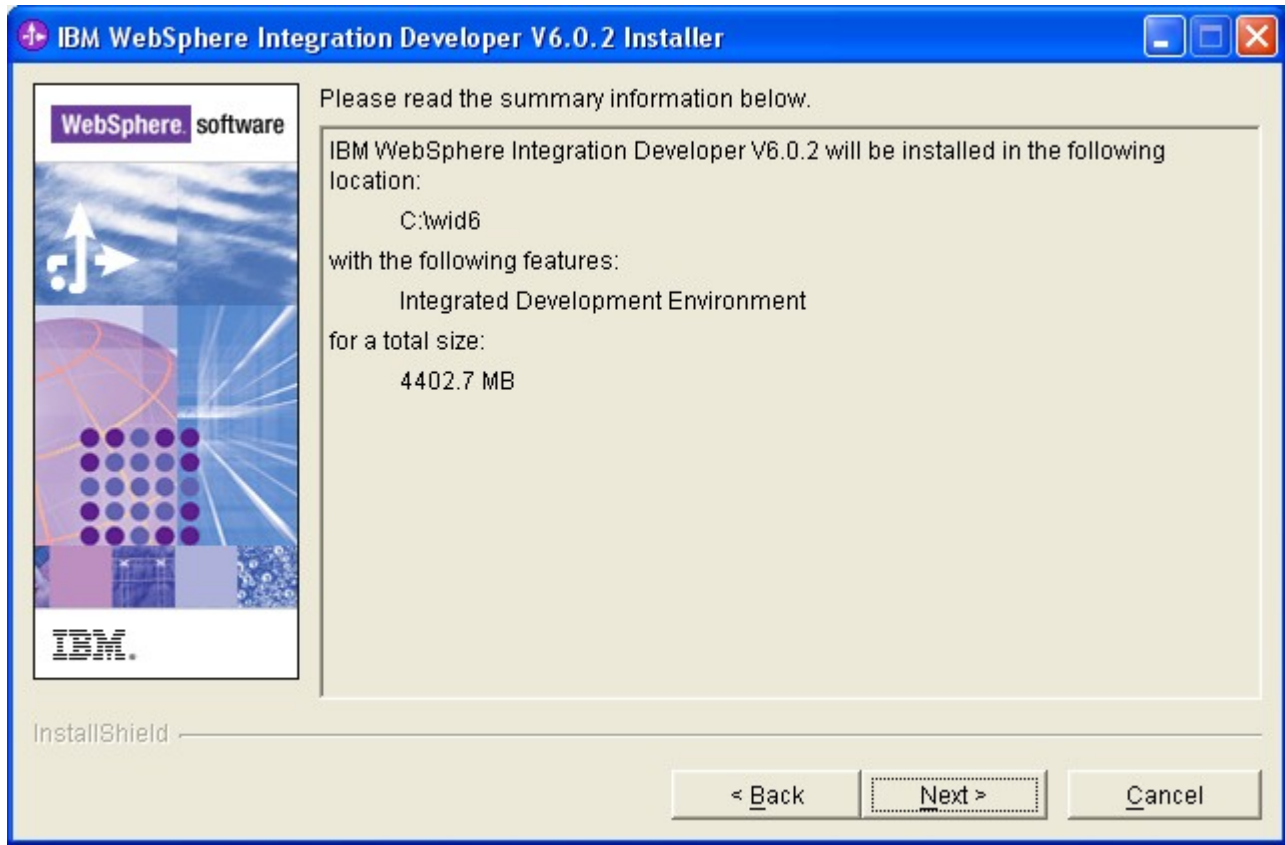
Important: You must make this change. The default installation location is too long and will cause problems with the functionality of the product.



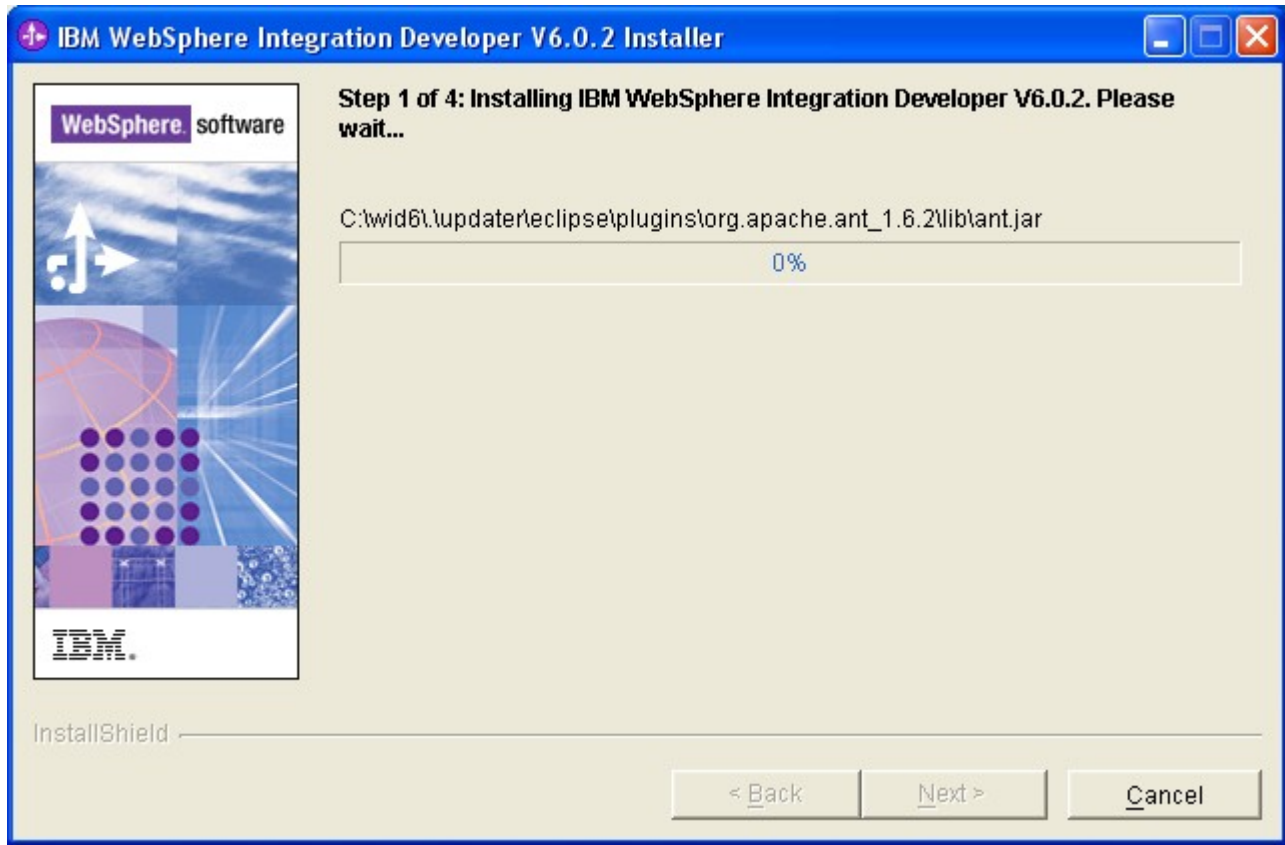
__6. Accept the defaults and click **Next**.



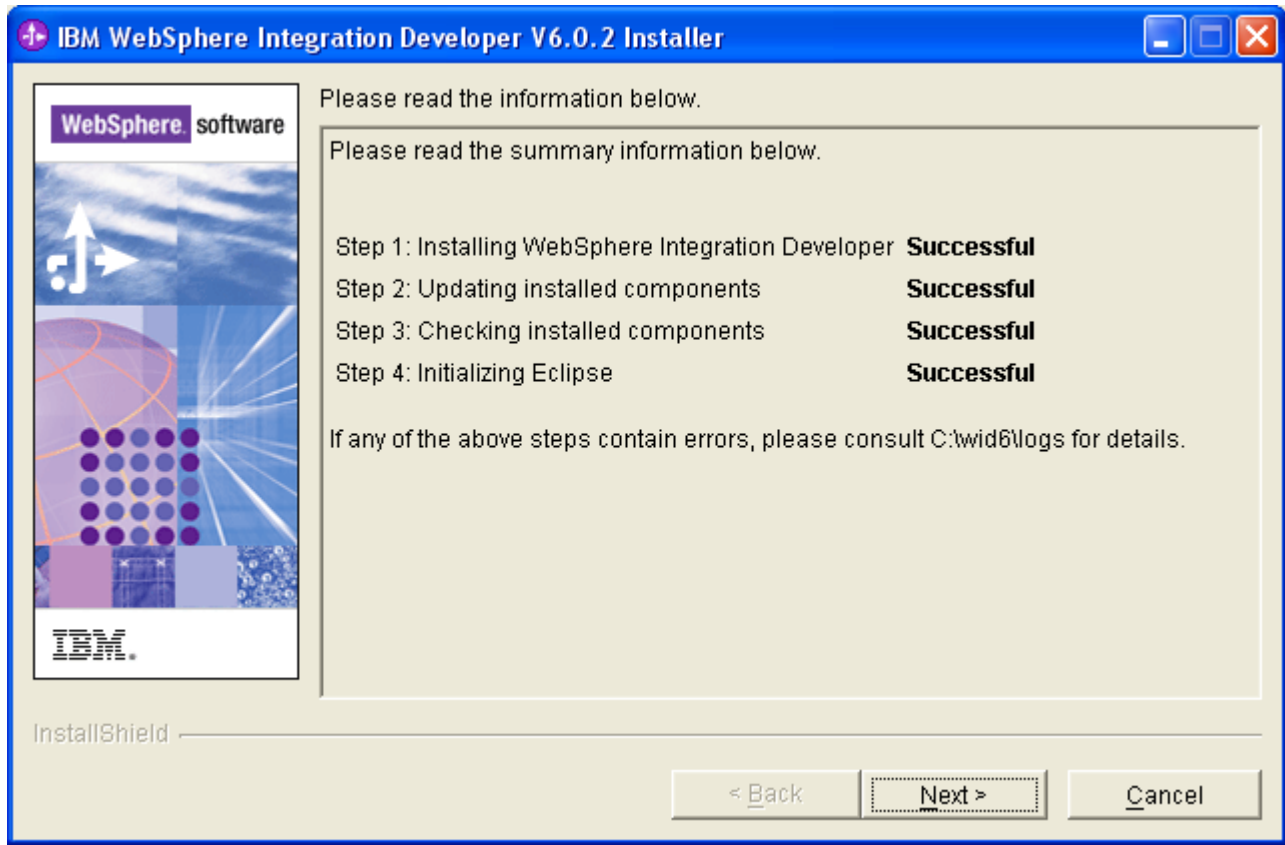
__7. In the summary page, click on **Next**.



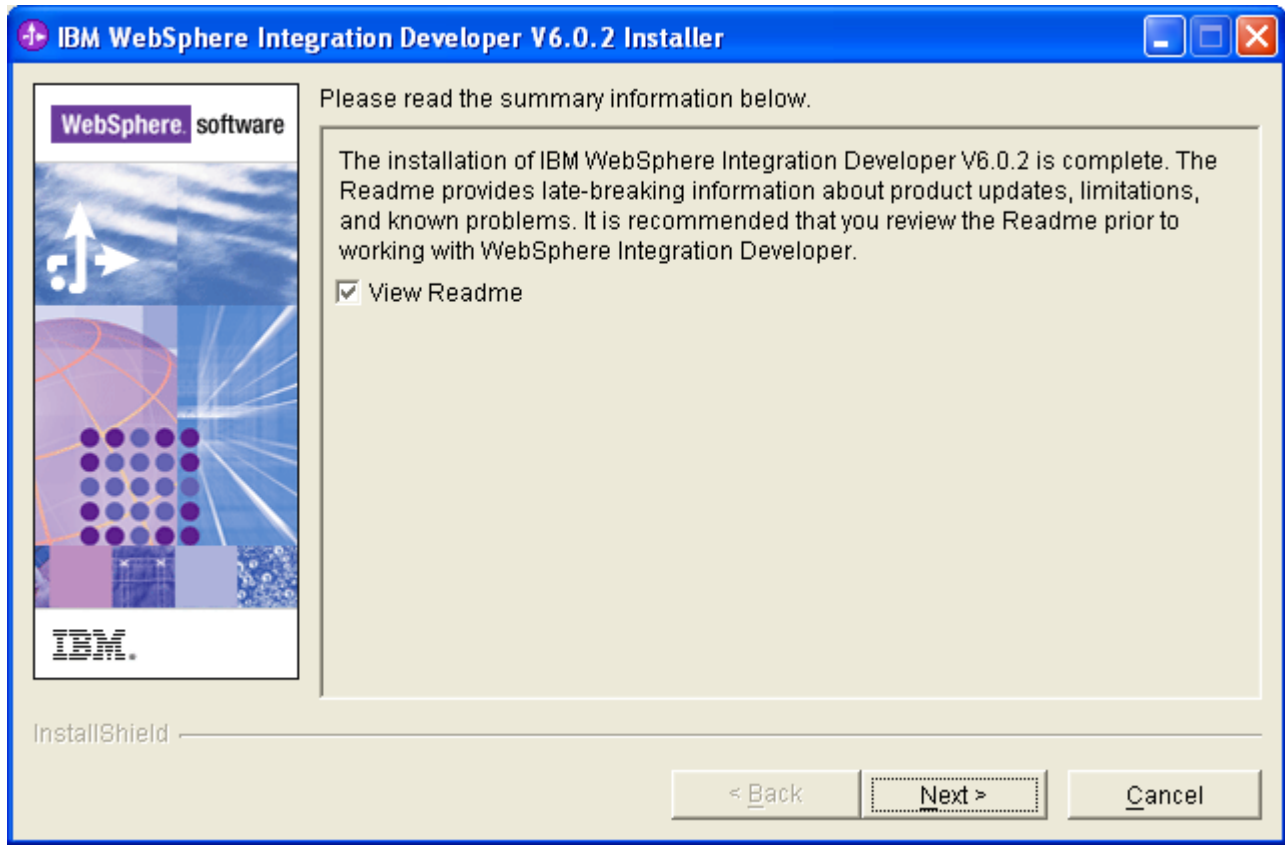
The system will begin the installation. Wait for the installation to end.



__8. Finally, make sure that you see the following screen and click **Next**.

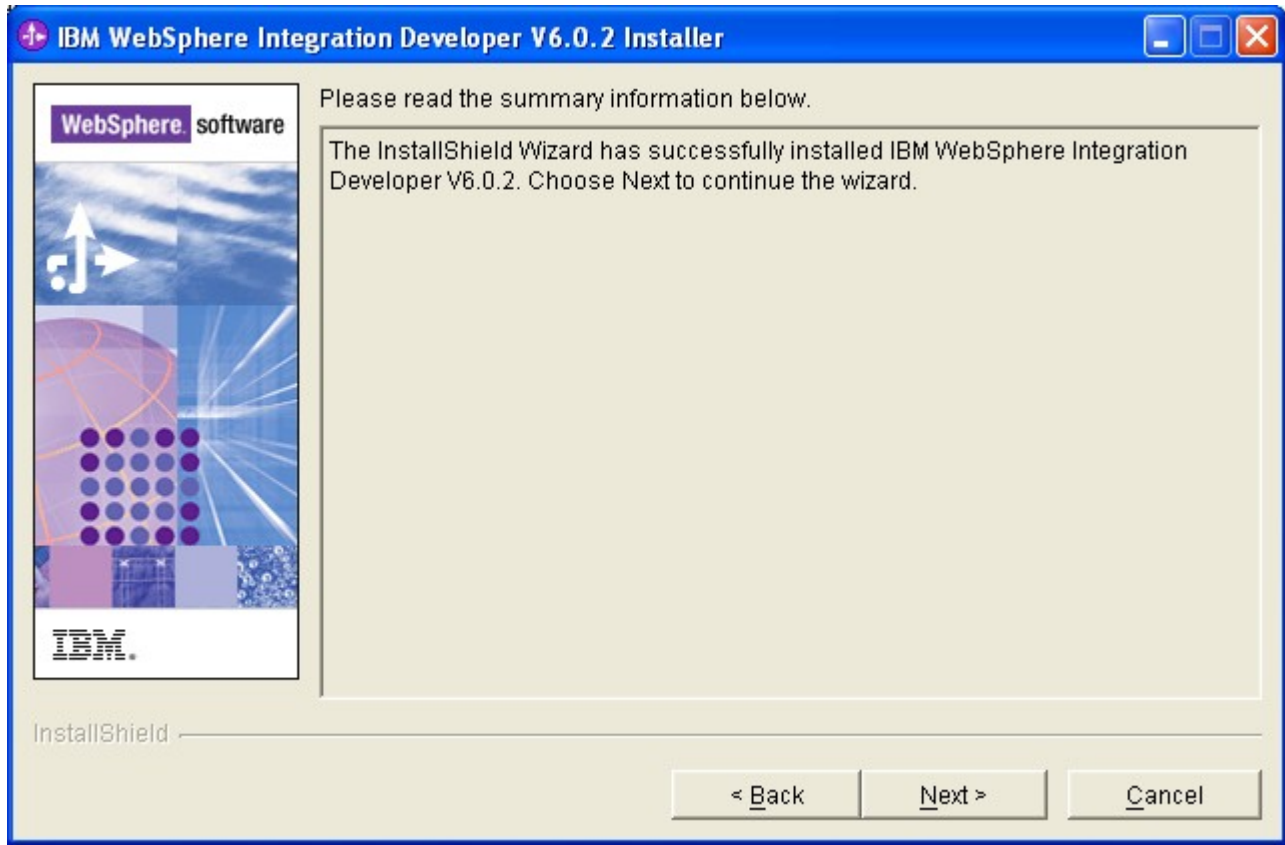


__9. Read the summary information and click **Next**.

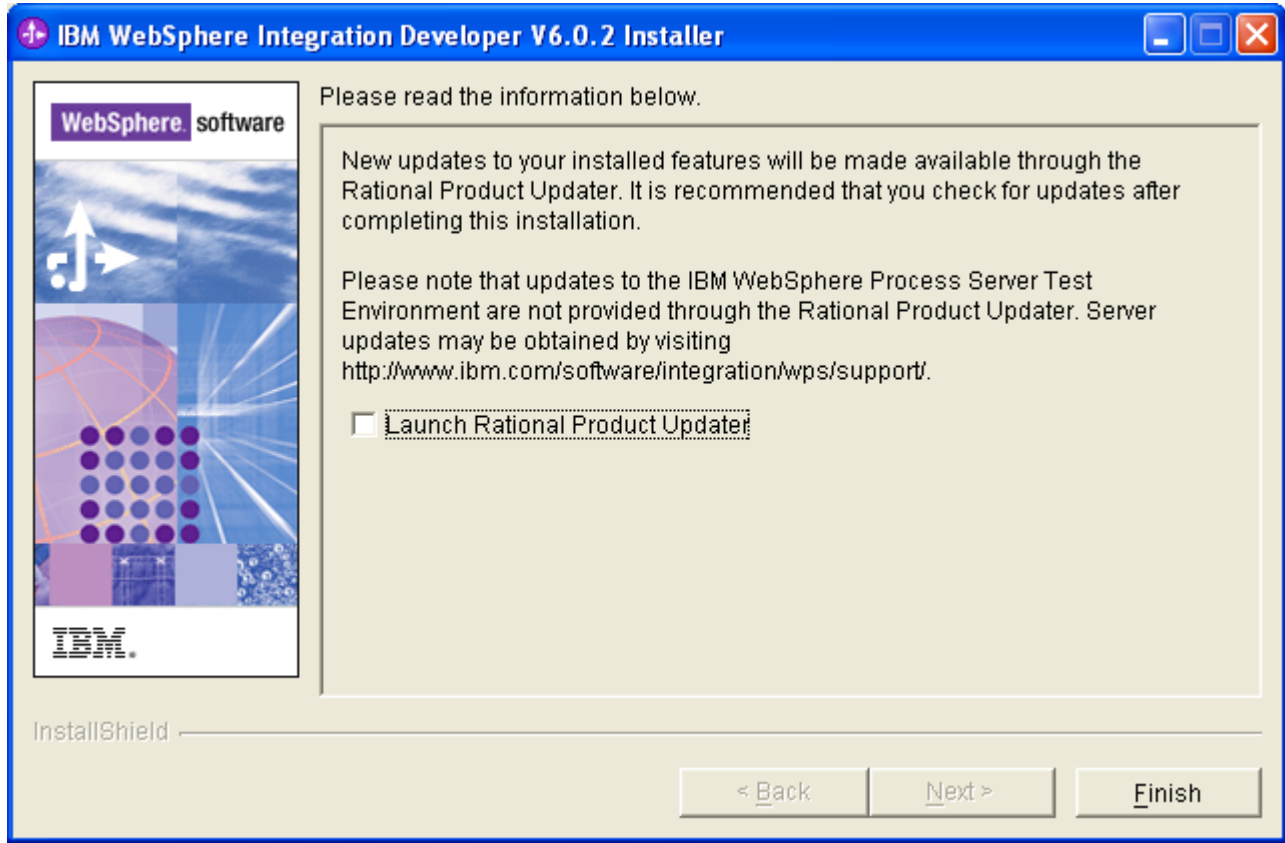


__10. System will open the read me file in a browser. Take a look at the file and then close the browser.

__11. Read the summary information and click **Next**.



__12. Uncheck **Launch Rational Product Updater**. Click **Finish**.



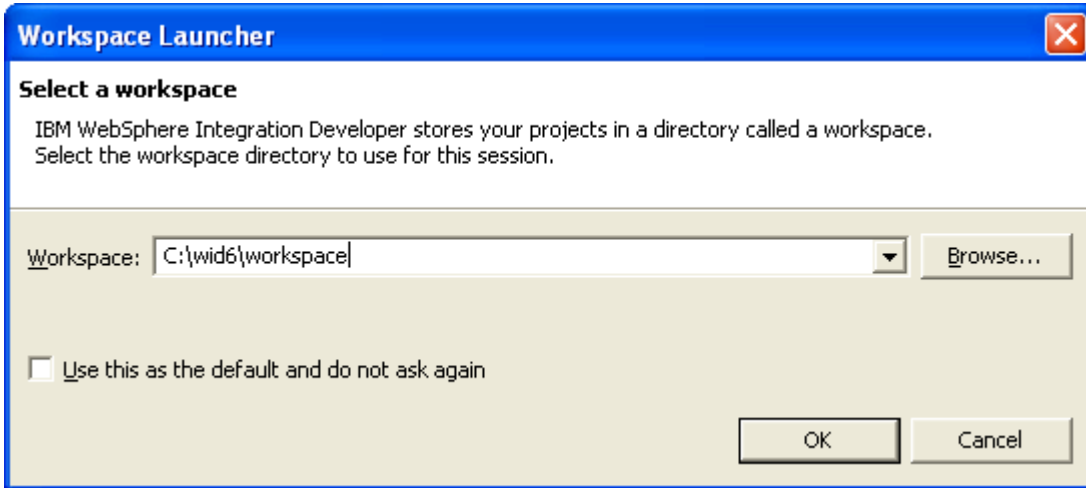
__13. Installation of WebSphere Integration Developer v6.0.2 (WID v6.0.2) is now complete. Close the **WebSphere Integration Developer Launchpad** window.

Verification

__1. Run verification on at least one machine.

__2. Launch WID using the following Windows start menu: **Start->All Programs->IBM WebSphere->Integration Developer V6.0.2->WebSphere Integration Developer V6.0.2.**

__3. Change the workspace to **C:\wid6\workspace** as shown below:



__4. Click **OK**.

__5. Close the Welcome screen.



__6. Exit WID by choosing **File->Exit** from the menu bar.

__7. Close all the open files.

Congratulations! The product has been successfully installed.

Congratulations. The installation of WA1568 WebSphere Process Server v6.0 Administration has been completed.