

# **WA1560 Advanced SOA Bootcamp**

## **Classroom Setup Guide**

**Web Age Solutions Inc.**

## Table of Contents

Classroom Requirements.....	3
Part 1 - Minimum Hardware Requirements .....	3
Part 2 - Minimum Software Requirements .....	4
Part 3 - Software Provided.....	5
Part 4 - Important Ghosting or Imaging Information.....	6
Software Installation.....	7
Part 1 - Preparation.....	7
Part 2 - Installing JRE 1.5.01.....	8
Part 3 - Installing WebSphere Integration Developer v6.0.2.....	11
Part 4 - Verification of the installation of WID 6.0.2.....	24

## **Classroom Requirements**

### **Part 1 - Minimum Hardware Requirements**

- Pentium 4 - 2GHz or higher
- 2 GB RAM minimum.
- 10 GB free hard disk space
- Network connectivity to the internet. Note: Some of the lab exercises require functioning Internet access.

## Part 2 - Minimum Software Requirements

- Windows 2000 SP4 or Windows XP SP2
- Adobe Acrobat Reader 6.0 (can be downloaded from <http://www.adobe.com>)
- Winzip (can be downloaded from <http://www.winzip.com>)
- Internet Explorer 6 or Mozilla Firefox 1.5 (or higher)
- JRE 1.5.1 \*
- Apache JMeter 2.2 \*
- WebSphere Integration Developer 6.0.2 (WID v6.0.2)

\* - indicates software provided as part of the courseware.

### **Part 3 - Software Provided**

You will receive a USB memory stick containing the following file:

- WA1560.ZIP

All other software listed under Minimum Software Requirements is either commercially licensed software that you must provide or software that is freely available off the Internet.

## **Part 4 - Important Ghosting or Imaging Information**

Some of the software installed for this course will not function after changing the computer hostname. As such, cloning or imaging should not be used on a fully installed system.

You can save time by extracting the contents of the USB memory stick to C:\ on a clean OS install (no other software installed) and then imaging that hard drive. After restoring the image to the other computers and changing the hostnames, you can then install the software on each computer individually by following the instructions that are detailed later in this document.

## Software Installation

### Part 1 - Preparation

\_\_1. From the USB memory stick, extract the **WA1560.ZIP** file to **C:\**

\_\_2. Review that the following folders were created:

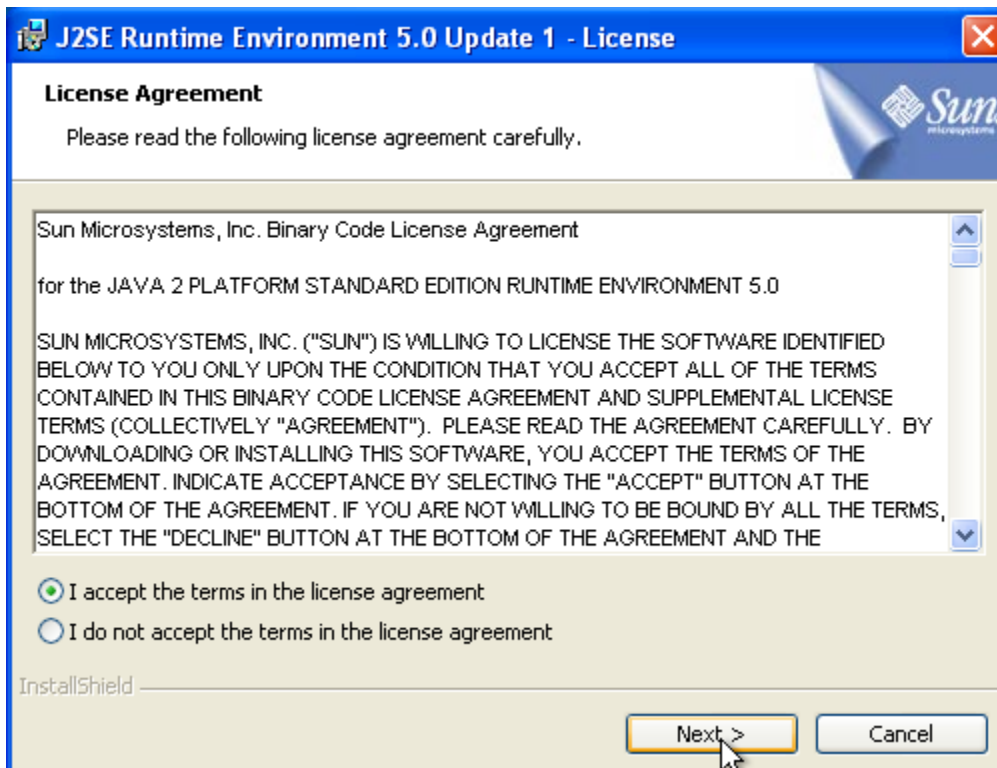
- **C:\jakarta-jmeter-2.2**
- **C:\LabFiles**
- **C:\Software\WID 6.0.2**

\_\_3. Review that the following file was created:

- **C:\Software\jre-1\_5\_0\_01-windows-i586-p.exe**

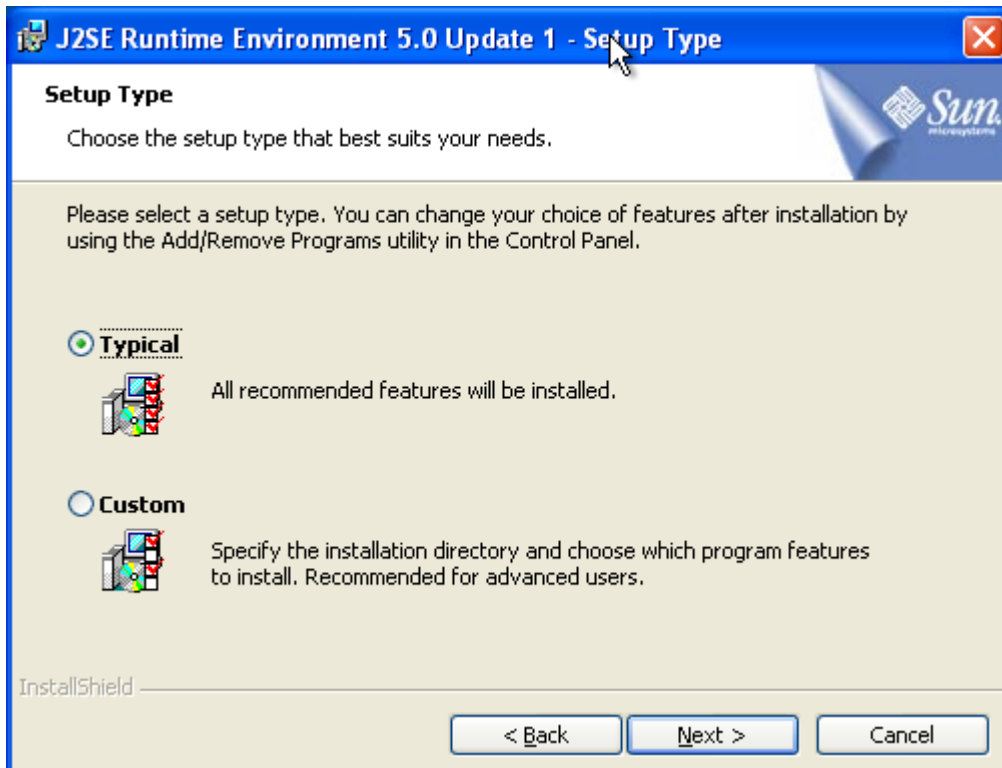
## Part 2 - Installing JRE 1.5.01

- \_\_1. Execute **jre-1\_5\_0\_01-windows-i586-p.exe** from **C:\Software**.
- \_\_2. Accept the license agreement and press **Next**.





\_\_3. Leave **Typical** selected and click **Next**.



\_\_4. When the **Installation Completed** page appear click **Finish**.

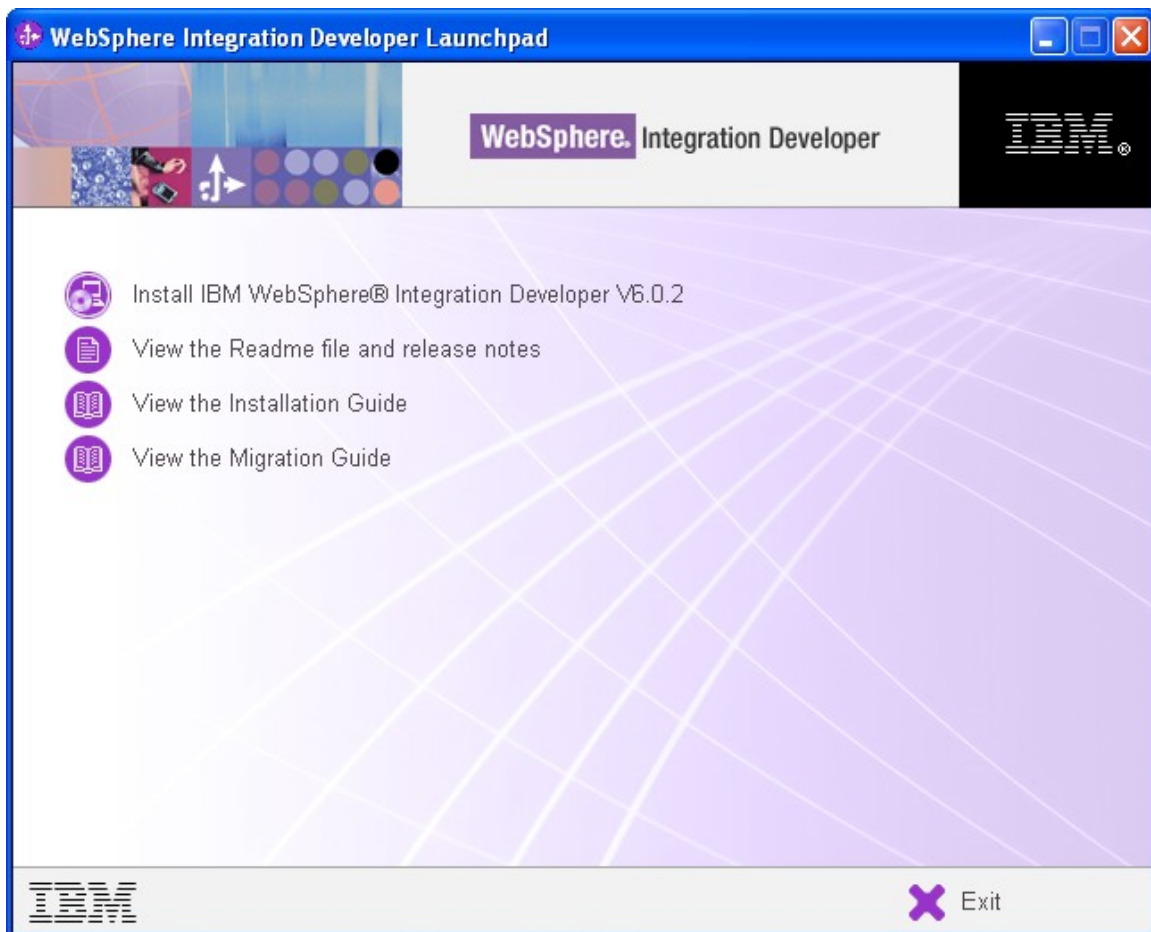


## Part 3 - Installing WebSphere Integration Developer v6.0.2



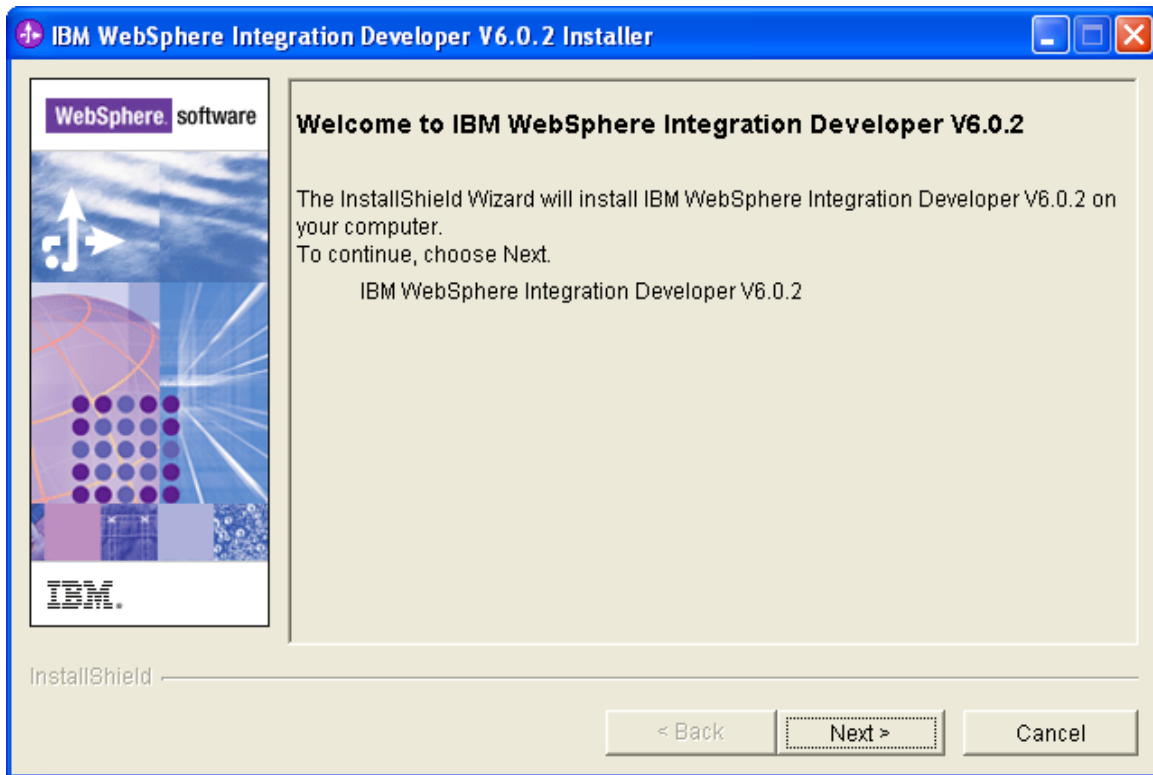
**Warning: You cannot use ghosting or disk imaging to install this software. You must install the software on each machine separately. Do not change the computer hostname after this software is installed. Also, do not install this software from a network share. It will only function partially if you do.**

1. From **Software\WID 6.0.2\disk1**, run **launchpad.exe**.

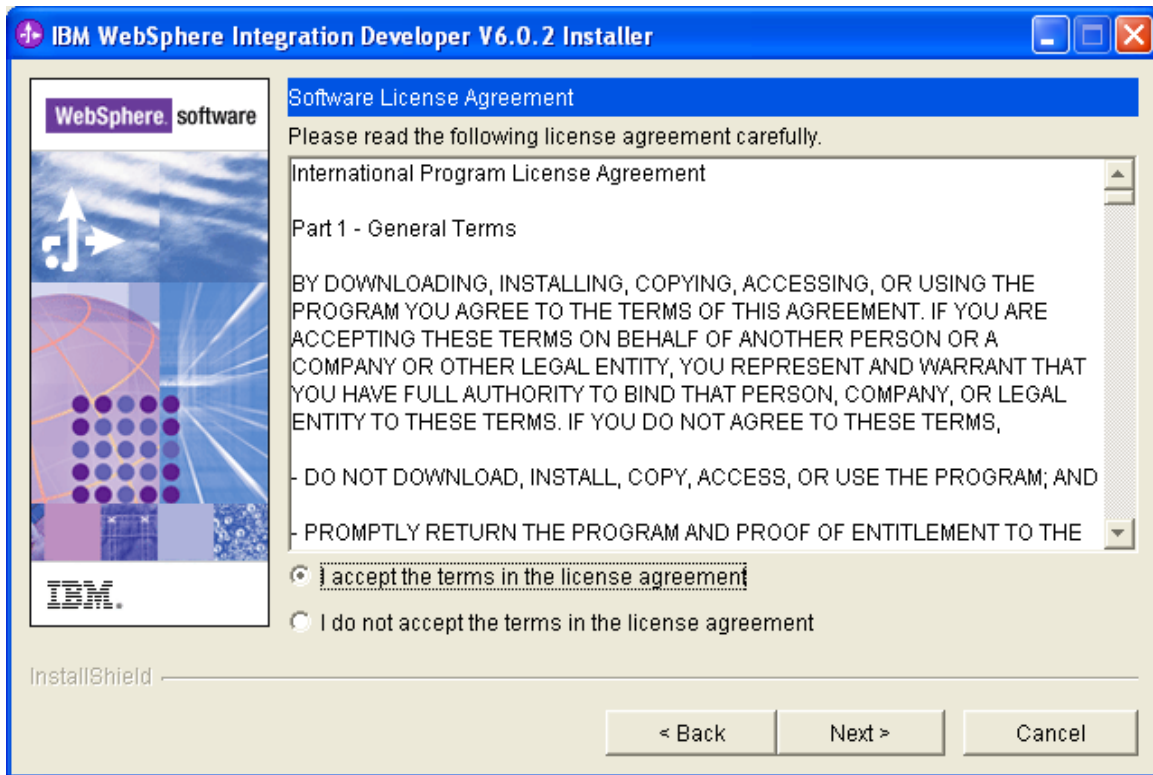


2. Click on **Install IBM WebSphere Integration Developer V6.0.2**.


3. Click **Next** in the Welcome screen.



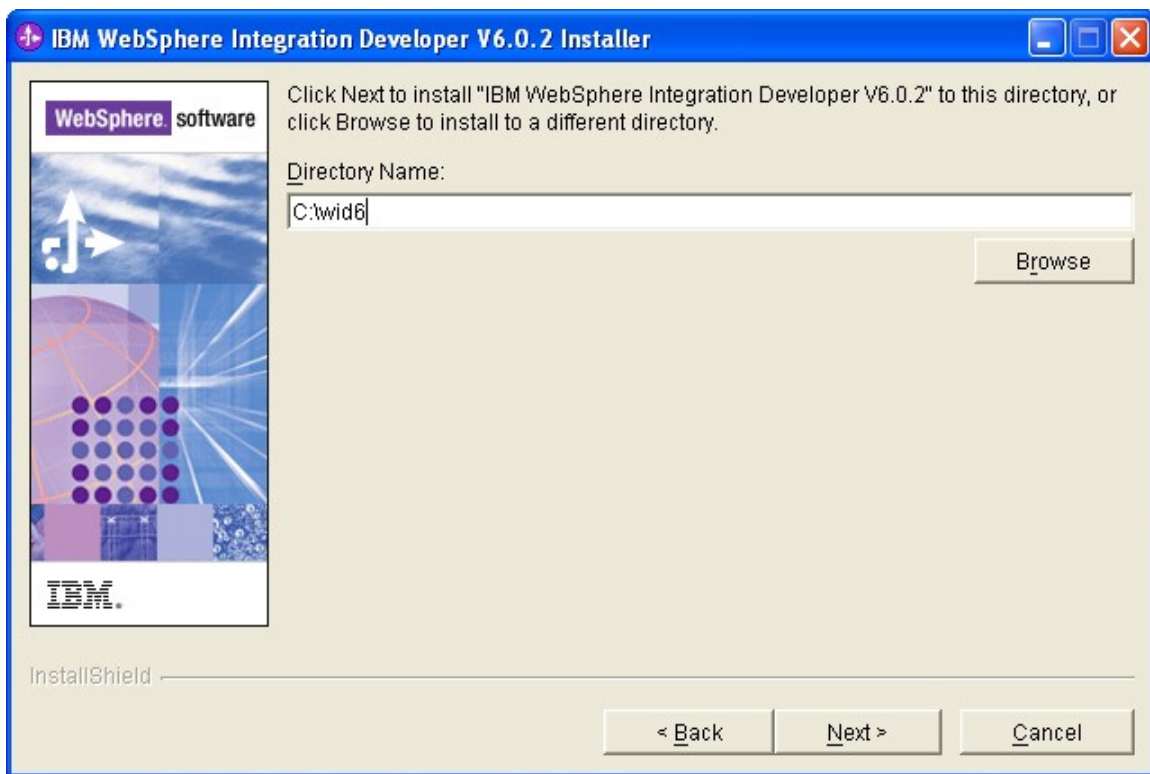
4. Accept the license terms and click **Next**.



\_\_5. Change the installation location to **C:\wid6**

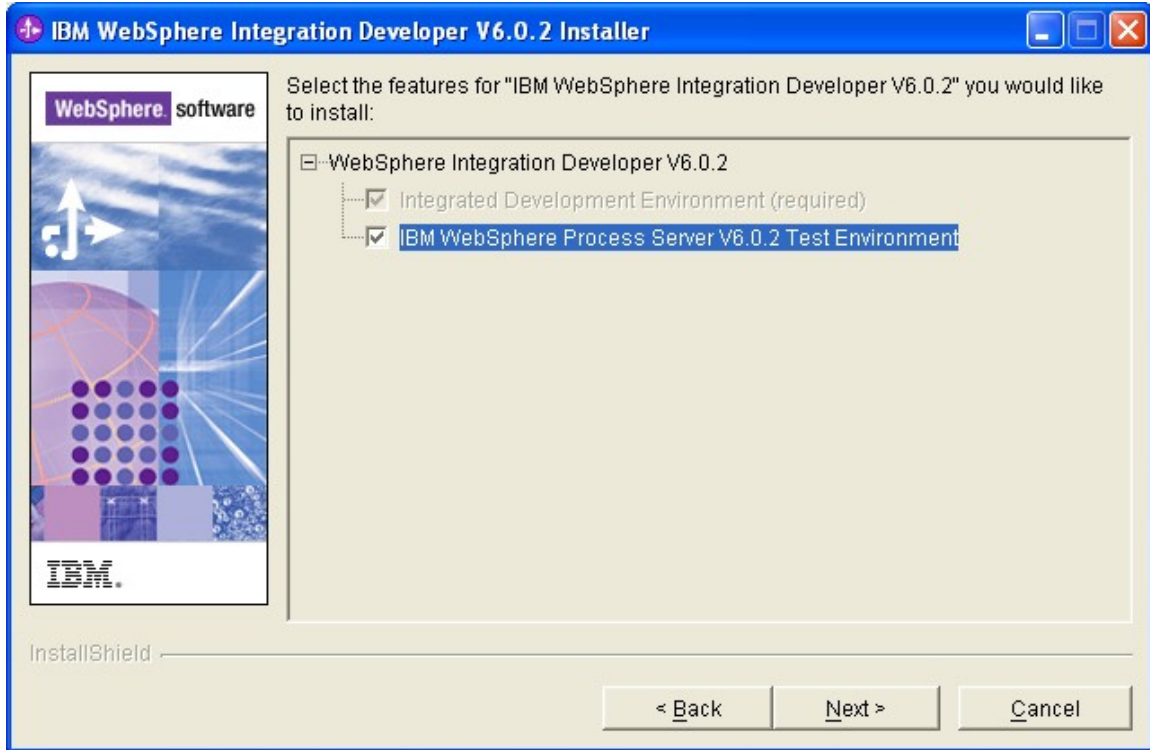


**Important: You must make this change. The default installation location is too long and will cause problems with the functionality of the product.**

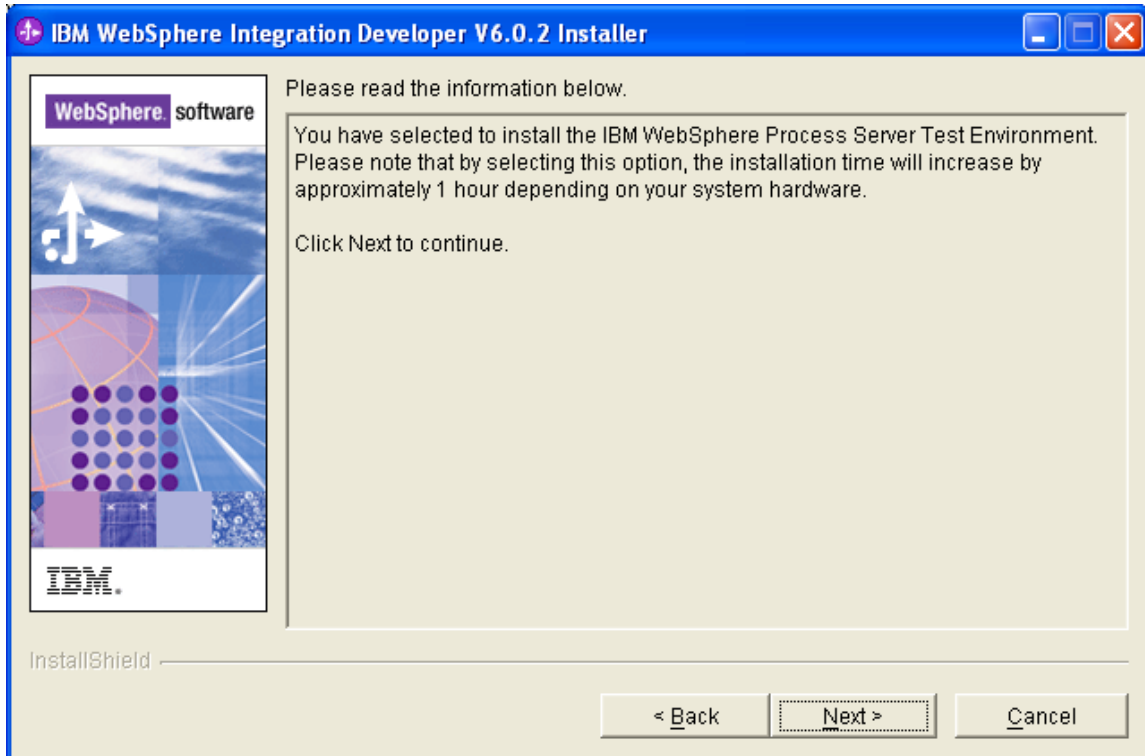


\_\_6. Click **Next**.

7. Check the **IBM WebSphere Process Server V6.0.2 Test Environment** and click **Next**.

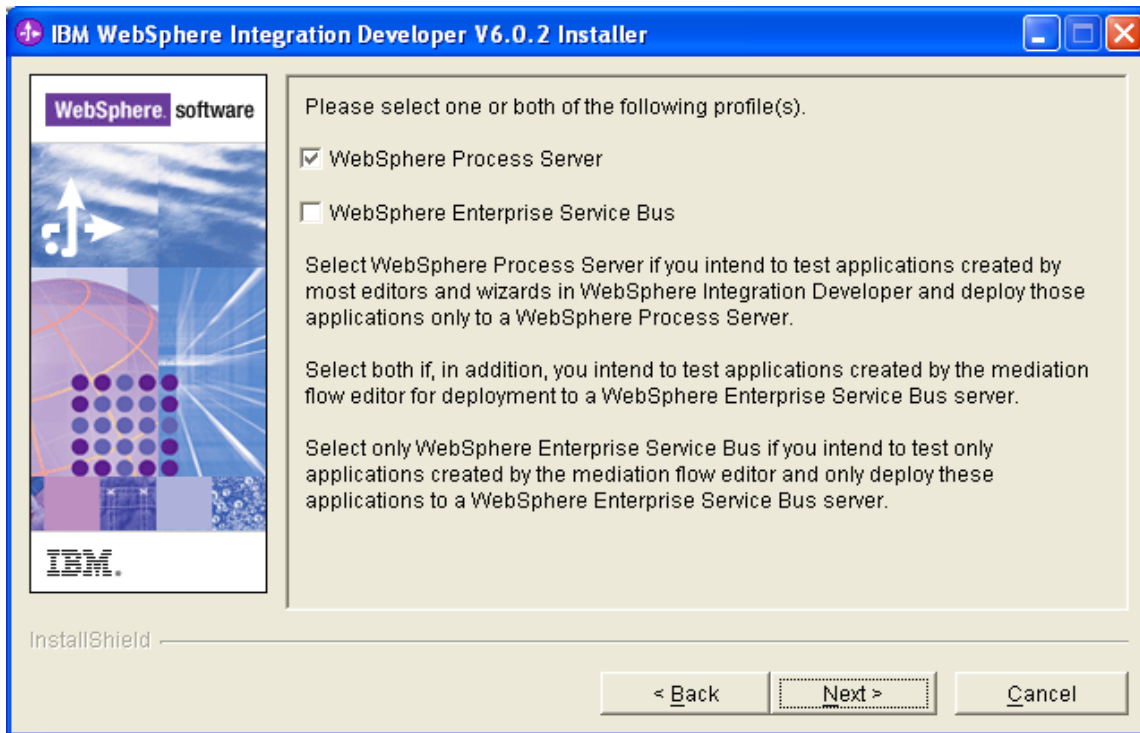


\_\_8. Read the message and click **Next**.

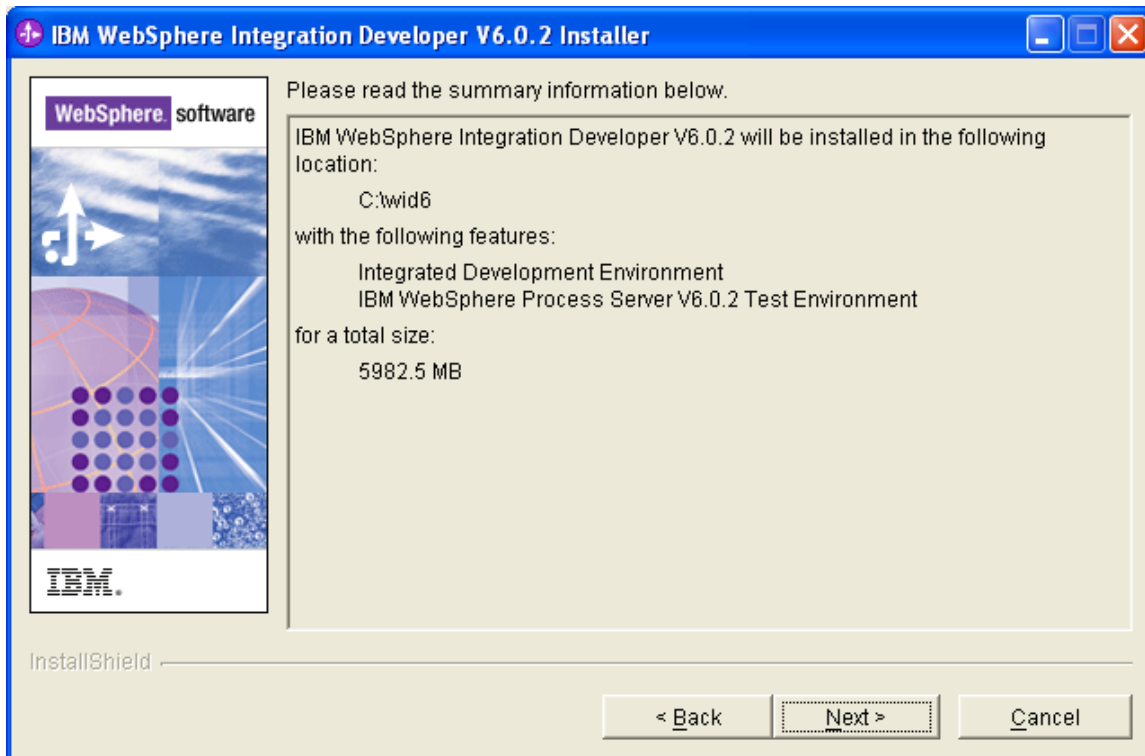




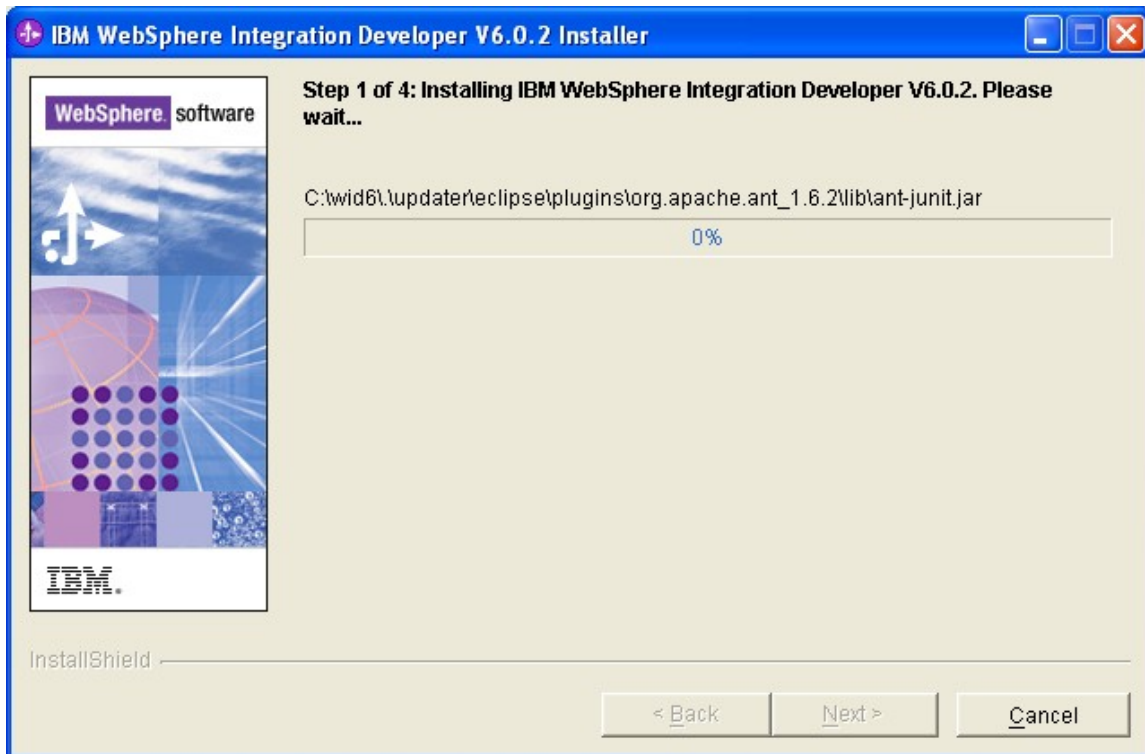
\_\_9. In the following screen, accept the default and press **Next**.



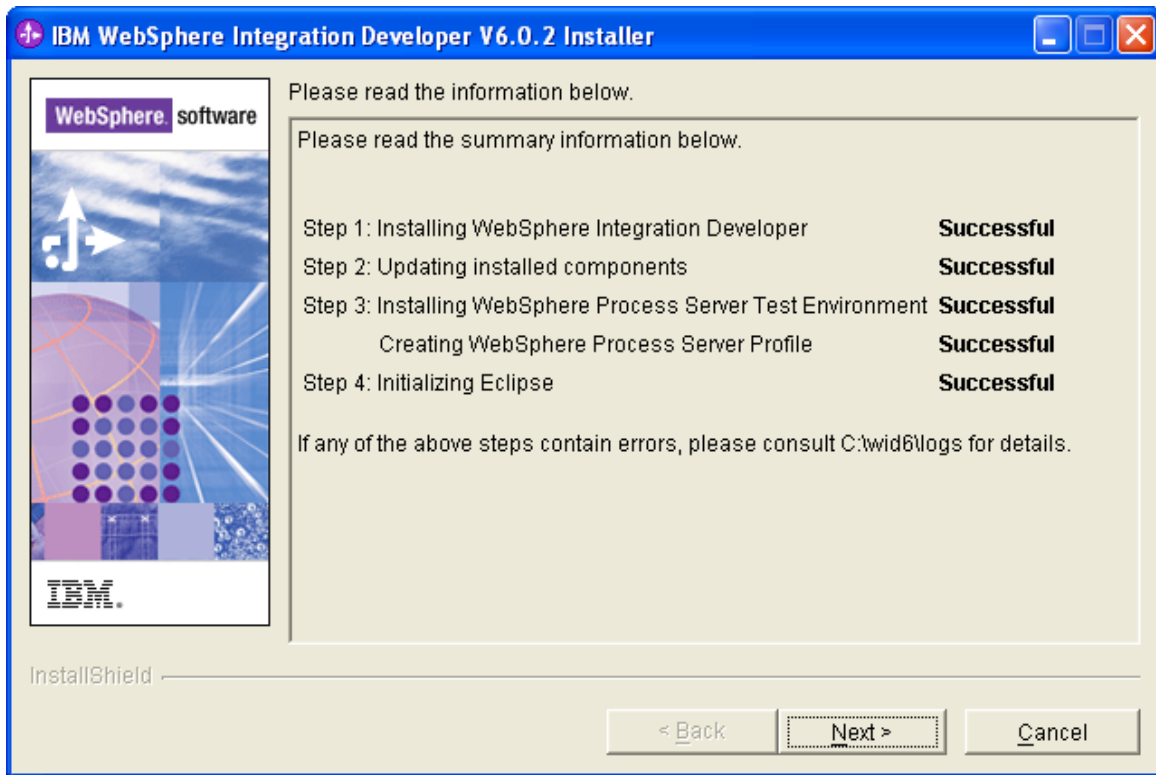
\_\_10. In the summary page, click on **Next**.



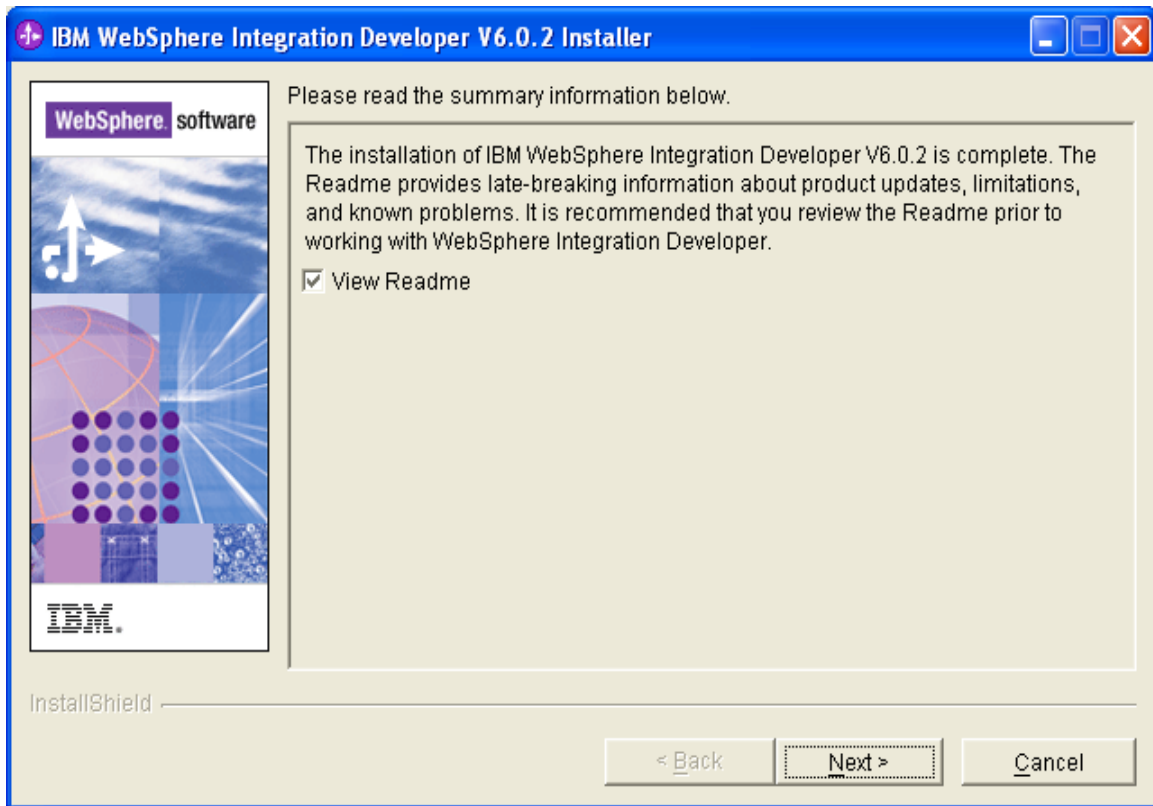
\_\_11. System will begin the installation. Wait for installation to end.



\_\_12. Finally, make sure that you see the following screen and click **Next**.



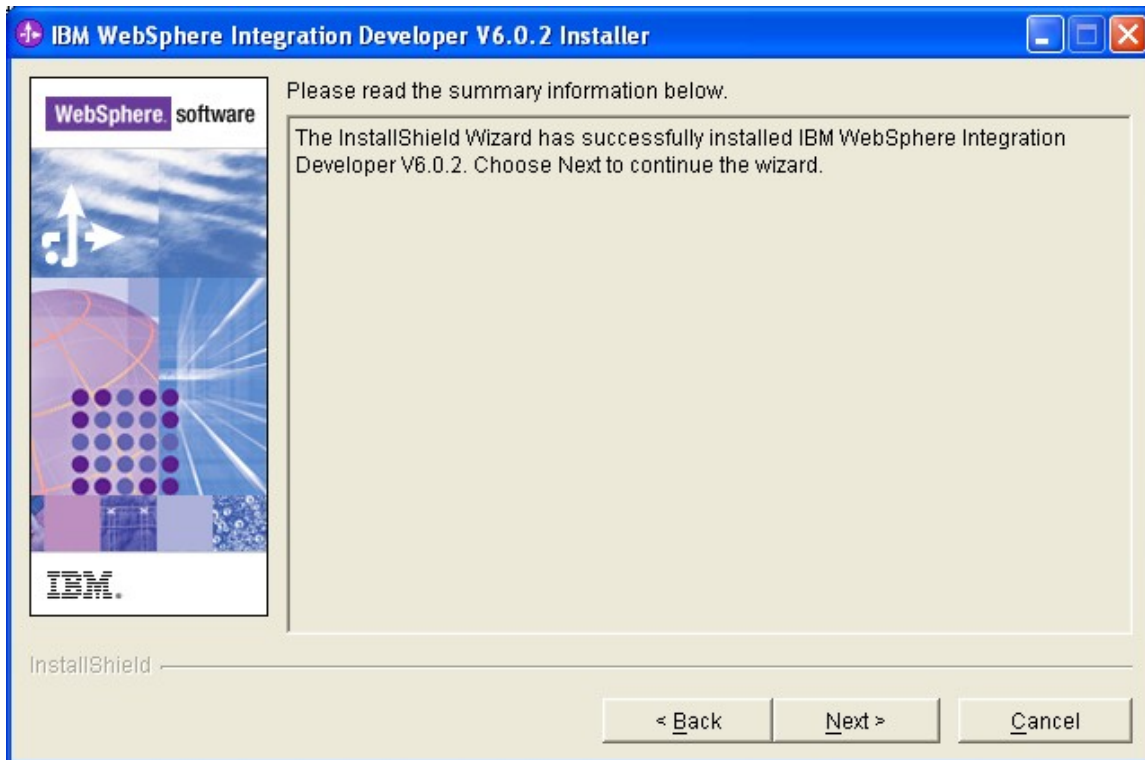
\_\_13. Read the summary information and click **Next**.



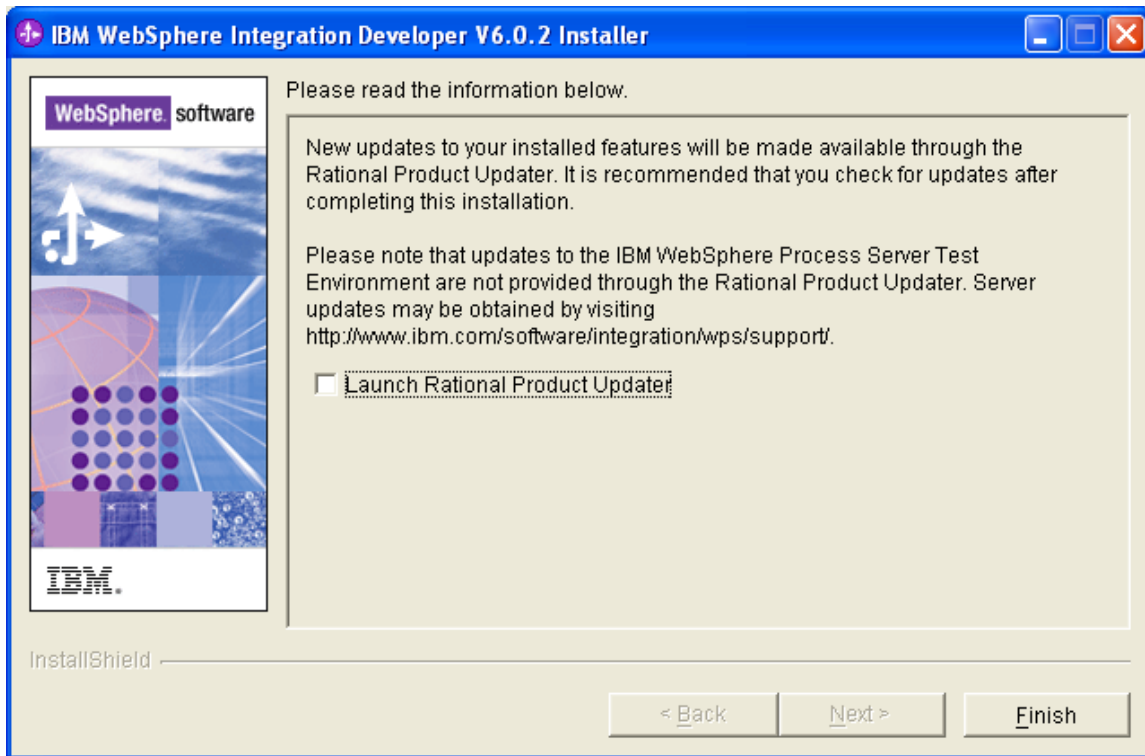
\_\_14. System will open the read me file in a browser. Take a look in the file.

\_\_15. Close the read me file.

\_\_16. Read the summary information and click **Next**.



\_\_17. Uncheck **Launch Rational Product Updater** and click **Finish**.



The installation of WebSphere Integration Developer v6.0.2 (WID v6.0.2) is now complete.

\_\_18. Close all the WebSphere Integration Developer Launchpad windows.

## Part 4 - Verification of the installation of WID 6.0.2

### Quick Verification

Run these quick verification steps on all machines.

\_\_1. Open **C:\wid6\logs\wid\_v602\_install.log**.

\_\_2. Go to the end of the file. Make sure that you see:

*(3-May-2007 4:00:31 PM), Install, com.ibm.wstools.WBISStatusCondition, dbg, Status:INSTCONFSUCCESS*

*(3-May-2007 4:00:52 PM), Install, com.ibm.wstools.AddLogEntryWizardAction, MESSAGE, Installation Complete*

\_\_3. Open **C:\wid6\logs\wps\_v602\_install\_err.log**.

\_\_4. Make sure that this error log file is empty.

\_\_5. Open **C:\wid6\logs\wps\_v602\_create\_wps\_profile.log**.

\_\_6. Scroll down to the very end. Make sure that you see these lines:

*(3-May-2007 3:50:56 PM), Install, com.ibm.ws.install.ni.ismp.actions.ISMPLogSuccessMessageAction, msg1, INSTCONFSUCCESS*

*(3-May-2007 3:50:56 PM), Install, com.ibm.ws.install.ni.ismp.actions.ISMPFileSystemManipulationWizardAction, err; The system cannot find the file specified.*

*(3-May-2007 3:50:56 PM), Install, com.ibm.ws.install.ni.ismp.actions.ISMPFileSystemManipulationWizardAction, err; The system cannot find the file specified.*

\_\_7. Ignore the error message "system cannot find the file specified". Make sure that you can see the line with "INSTCONFSUCCESS".

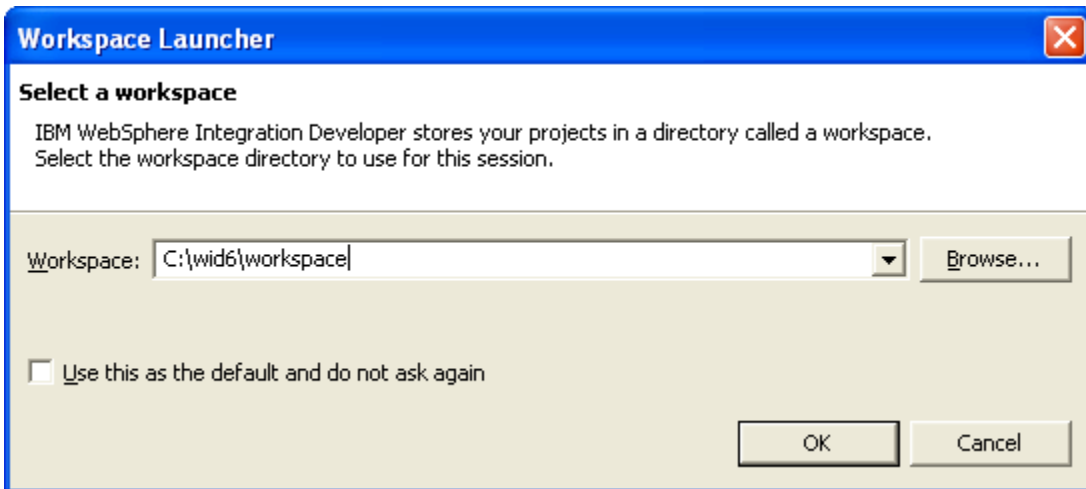


### ***Detailed Verification of the installation of WID 6.0.2***

Run detailed verification on at least one machine.

\_\_8. Launch WID using the following Windows start menu: **Start->All programs->IBM WebSphere->Integration Developer 6.0.2->WebSphere Integration Developer V6.0.2.**

\_\_9. Change the workspace to **C:\wid6\workspace** as shown below.

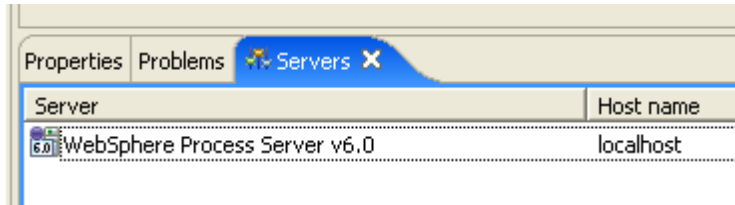


\_\_10. Click **OK**.

\_\_11. Close the Welcome screen.

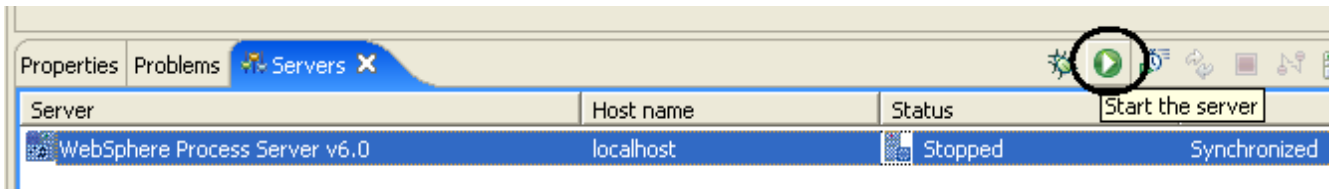


\_\_12. At the bottom of the screen, click on the **Servers** tab.

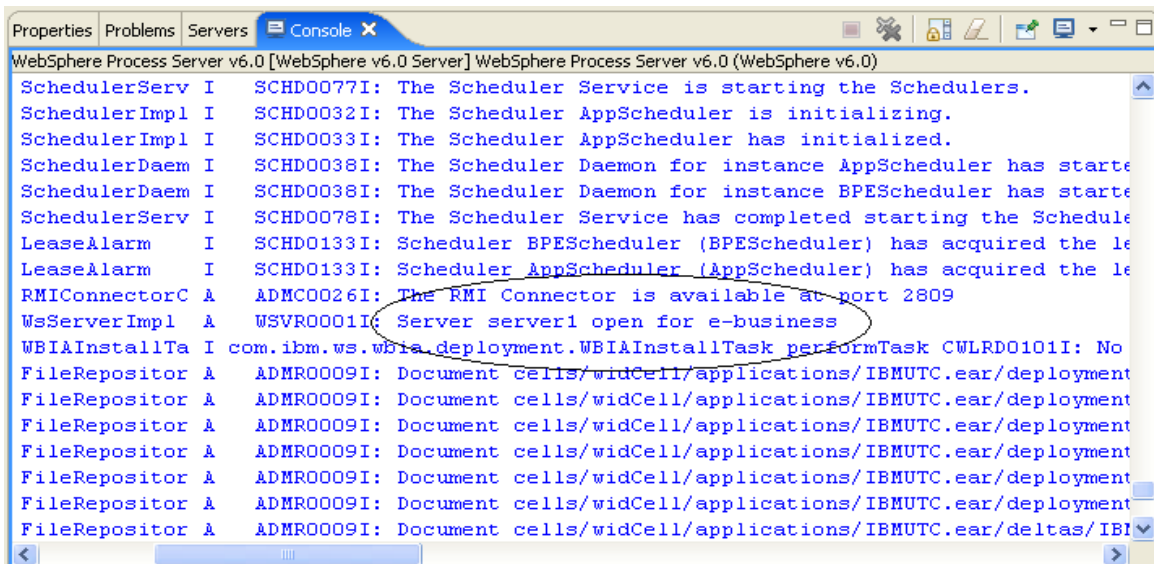


\_\_13. Select **WebSphere Process Server v6.0**.

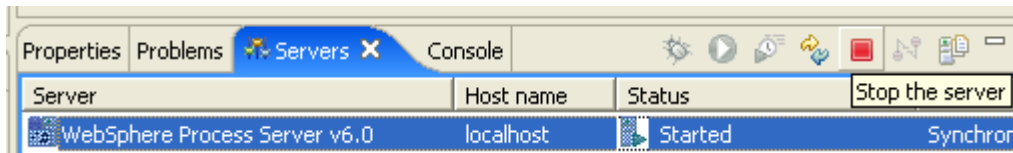
\_\_14. Click on the **Start the server** button to start the server.



\_\_15. In the **Console** view, system will show the startup messages. Wait for a minute or two. Make sure that you see the "**Server server1 open for e-business**" message.



\_\_16. Click on the **Servers** tab again. Make sure that the status of the server is **Started**.



\_\_17. Select the server and stop it by clicking on the **Stop the server** button.

\_\_18. Wait for the server to stop.

\_\_19. Exit WID by choosing **File->Exit** from the menu bar.

\_\_20. Close all the open files.

Congratulations! The product has installed successfully.