

WA1426 WebSphere Business Modeler for Business Process Management

Classroom Setup Guide

Web Age Solutions Inc.

Table of Contents

Part 1 - Minimum Hardware Requirements	3
Part 2 - Minimum Software Requirements	3
Part 3 - Software Provided.....	3
Part 4 - Important Ghosting or Imaging Information.....	4
Part 5 - Instructions.....	4
Part 6 - WebSphere Business Modeler V6.1.1 Setup.....	5

Part 1 - Minimum Hardware Requirements

- 2 GHz Pentium IV
- 1 GB RAM minimum, 2 GB or more recommended
- 10 GB in the hard disk
- USB port

Part 2 - Minimum Software Requirements

- Adobe Acrobat Reader
- Zip extraction utility
- One of the following web browsers
 - Internet Explorer 7 or 8
 - Firefox 3.0 or 3.5
- IBM WebSphere Business Modeler Advanced Edition V6.1.1 *

* - indicates software provided as part of the courseware.

Part 3 - Software Provided

Number of USB memory sticks that you will receive: 1

Name of the files containing in the memory sticks (one file per memory stick):

- **WA1426.ZIP**

All other software listed under Minimum Software Requirements is either commercially licensed software that you must provide or software that is freely available off the Internet.

Part 4 - Important Ghosting or Imaging Information

Some of the software installed for this course will not function after changing the computer hostname. As such, cloning or imaging should not be used on a fully installed system.

You can save time by extracting the contents of the USB memory stick to C:\ on a clean OS install (no other software installed) and then imaging that hard drive. After restoring the image to the other computers and changing the hostnames, you can then install the software on each computer individually by following the instructions that are detailed later in this document.

Part 5 - Instructions

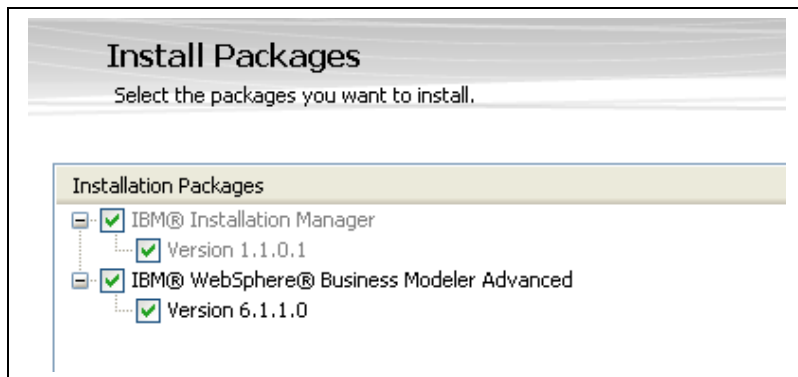
__1. From a USB memory stick, extract the **WA1426.ZIP** file to C:\

__2. Review that the following folders were created:

- **C:\LabFiles**
- **C:\Software\WBM6.1.1**

Part 6 - WebSphere Business Modeler V6.1.1 Setup

- __1. Log in to Windows as a user having administration rights.
- __2. Navigate to the folder **C:\Software\WBM6.1.1**
- __3. Double click on the **launchpad.exe** file to start the installation.
- __4. Click **Install IBM WebSphere Business Modeler Advanced V6.1.1** link.



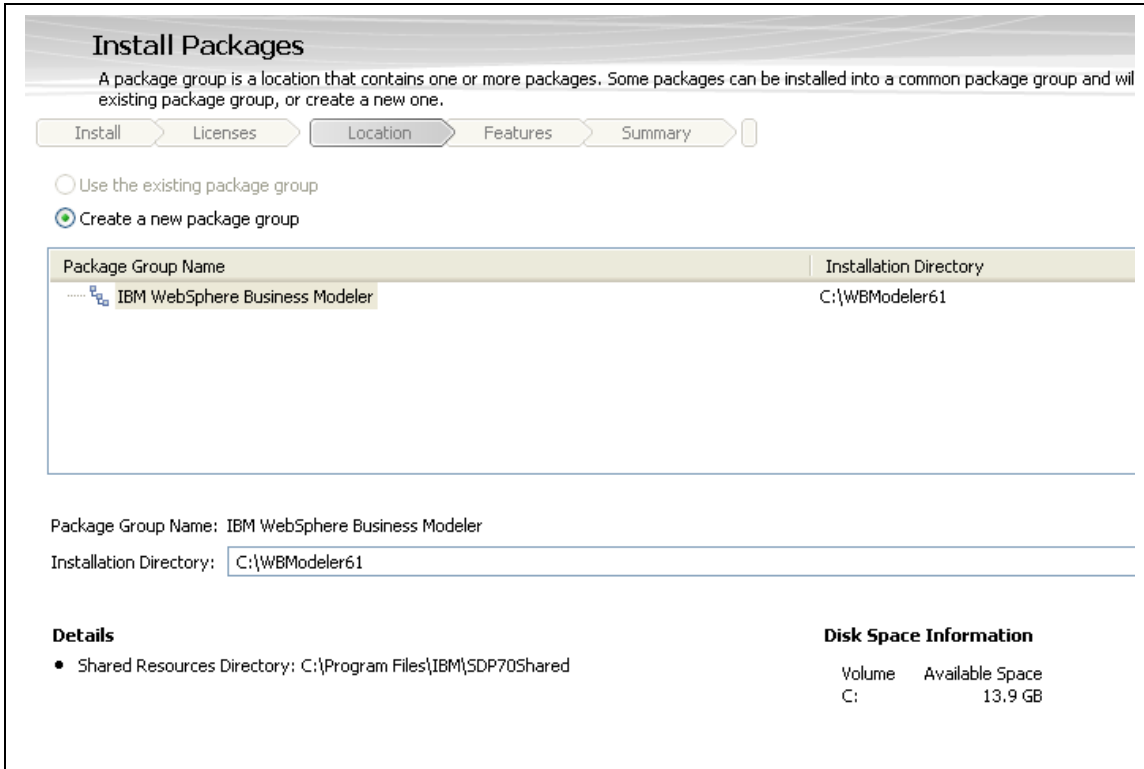
- __5. Leave all Installation Packages selected and click **Next**.
- __6. Accept the license agreement and click **Next**.

The screenshot shows the 'Install Packages' wizard in the 'Location' step. The title bar reads 'Install Packages' and the subtitle says 'Select a location for the shared resources directory and a location for Installation Manager.' The progress bar at the top shows 'Location' as the active step, with 'Install', 'Licenses', 'Features', and 'Summary' as previous steps. A warning icon is present next to the following text: 'When you install packages, files are stored in two locations: 1) The shared resources directory - resources that can be shared by multiple packages. 2) The installation directory - any resources that are unique to the package that you are installing. Important: You can only select the shared resources directory the first time you install a package with the IBM Installation Manager because it must have adequate space for the shared resources of future packages.' Below this, the 'Shared Resources Directory' is set to 'C:\Program Files\IBM\SDP70Shared'. An information icon is followed by the text: 'Once installed, IBM Installation Manager will be used to install, update, modify, manage and uninstall your packages.' The 'Installation Manager Directory' is set to 'C:\Program Files\IBM\Installation Manager\eclipse'. At the bottom, a 'Disk Space Information' table shows the available space on the C: drive.

Volume	Available Space
C:	13.9 GB

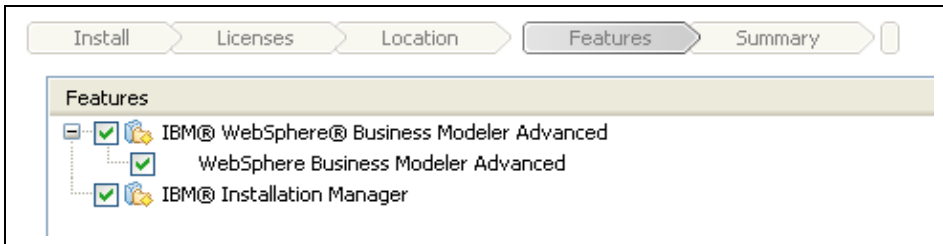
7. Leave the default for *Shared Resources Directory* and *Installation Manager Directory* and click **Next**.

8. For the Installation Directory change it to **C:\WBModeler61**



9. Click **Next**.

10. Accept **English** as the language and press **Next**.



11. Under the Features list, leave all selected and click **Next**.

Install Packages
Review the summary information. Click Back to make changes, or click Install.

Install > Licenses > Location > Features > **Summary**

Target Location

Package Group Name	Installation Directory
IBM WebSphere Business Modeler	C:\WBModeler61
IBM Installation Manager	C:\Program Files\IBM\Installation Manager\eclipse

Shared Resources Directory: C:\Program Files\IBM\SDP705Shared

Features

- IBM@ WebSphere@ Business Modeler Advanced
 - WebSphere Business Modeler Advanced
 - IBM@ Installation Manager

Environment
English

Disk Space Information

Total Available Space
C: 13.9 GB

Total Download Size: 749.5 MB
Total Installation Size: 1.0 GB

Repository Information
Files will be retrieved from the following locations:

Repository	Download Size
C:\Software\Business Modeler Software 6.1.1\ModelerIM_6.1.1-TRIAL	673.4 MB
C:\Software\Business Modeler Software 6.1.1\ModelerIM_6.1.1-TRIAL\IM_win32	31.9 MB
C:\Documents and Settings\wasadmin\Local Settings\Temp\installerRepository62956.tmp	44.2 MB

< Back Next > **Install**

__12. In the Summary page, click **Install**. The installation will start and will take some minutes.

Eventually the setup will finish.

Install Packages

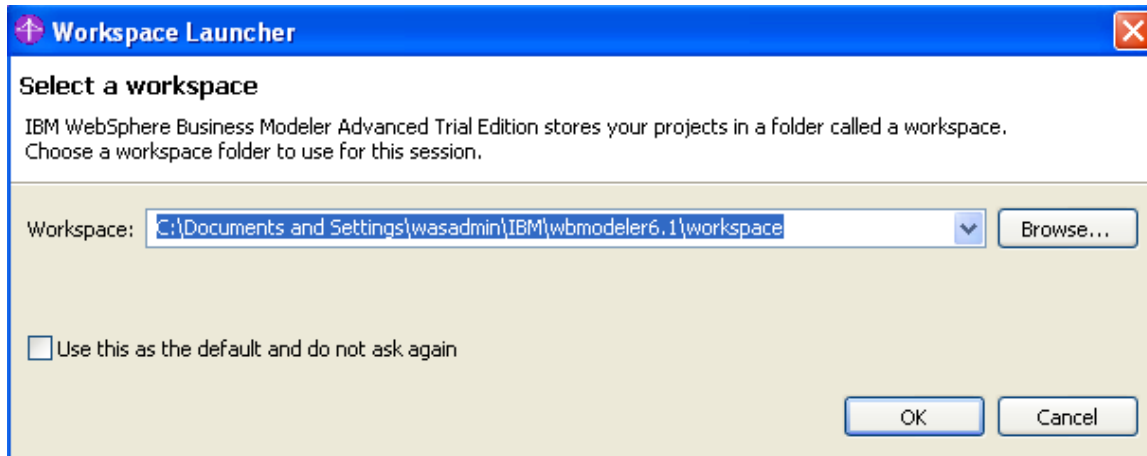
Success! The installation was successful. [View Log File](#)

The following package was installed into package group IBM WebSphere Business Modeler: Which of the following packages would you like to start?

- IBM@ WebSphere@ Business Modeler Advanced
 - IBM@ WebSphere@ Business Modeler Advanced
 - WebSphere Business Modeler Advanced

IBM WebSphere Business Modeler Advanced
 None

__13. Leave **IBM WebSphere Business Modeler Advanced** selected and click **Finish**.



__14. Leave the default Workspace and click **OK**.

__15. Once Business Modeling starts close it.

__16. Close all.

Congratulations. The installation of WA1426 WebSphere Business Modeler for Business Process Management has been completed.