

WA1220 Introduction to Developing OO Applications with Java for Procedural Developers

Classroom Setup Guide

Web Age Solutions Inc.

Table of Contents

Classroom Requirements.....	3
Part 1 - Minimum Hardware Requirements	3
Part 2 - Minimum Software Requirements	3
Part 3 - Software Provided.....	3
Software Installation.....	4
Part 1 - Preparation.....	4
Part 2 - Installing JDK 1.5 update 16.....	5
Part 3 - Configuring Eclipse SDK 3.4.1.....	12

Classroom Requirements

Part 1 - Minimum Hardware Requirements

- 500 MHz CPU
- 512 MB memory
- 8 GB Hard Disk
- USB port.

Part 2 - Minimum Software Requirements

- Windows XP or Windows 2000 SP4
- Adobe Acrobat Reader
- Mozilla Firefox 1.5 or IE 6.0
- JDK 5.0 update 16*
- Eclipse SDK 3.4.1 *

* - indicates software provided as part of the courseware.

Part 3 - Software Provided

You will receive a USB containing the following file:

- WA1220.ZIP

All other software listed under Minimum Software Requirements is either commercially licensed software that you must provide or software that is freely available off the Internet.

Software Installation

Part 1 - Preparation

__1. From the USB, extract the **WA1220.ZIP** file to **C:**

__2. Review that the following folders were created:

- **C:\eclipse**
- **C:\LabFiles**
- **C:\Software**

__3. Review that the following files were created:

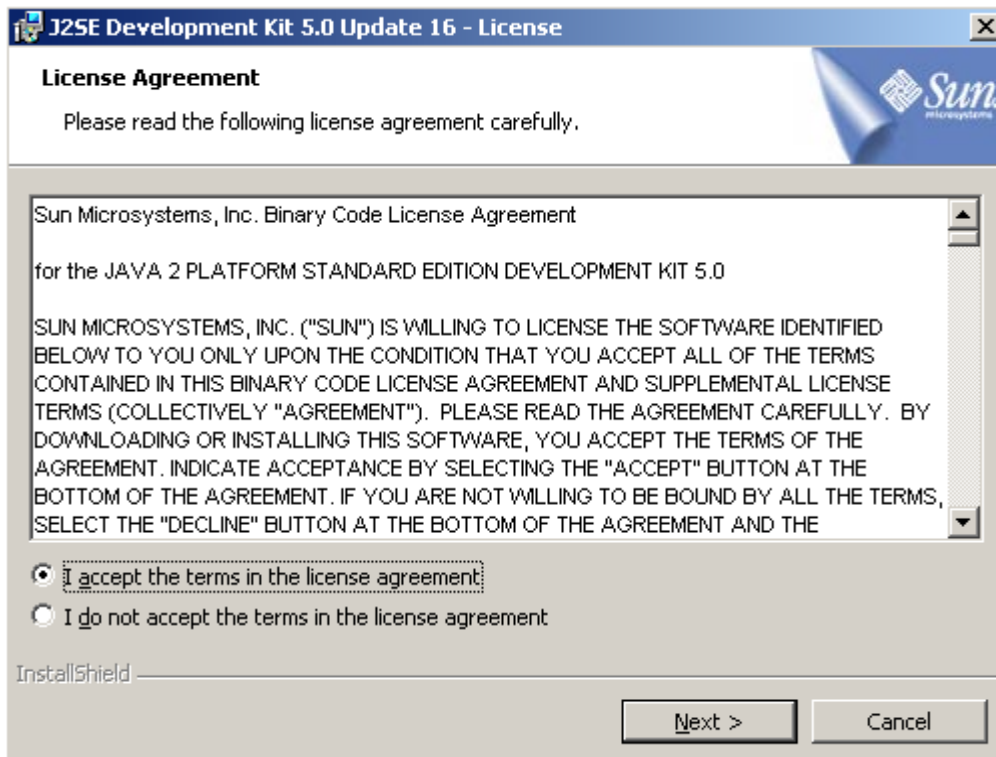
- **C:\Software\jdk-1_5_0_16-windows-i586-p.exe**

Part 2 - Installing JDK 1.5 update 16

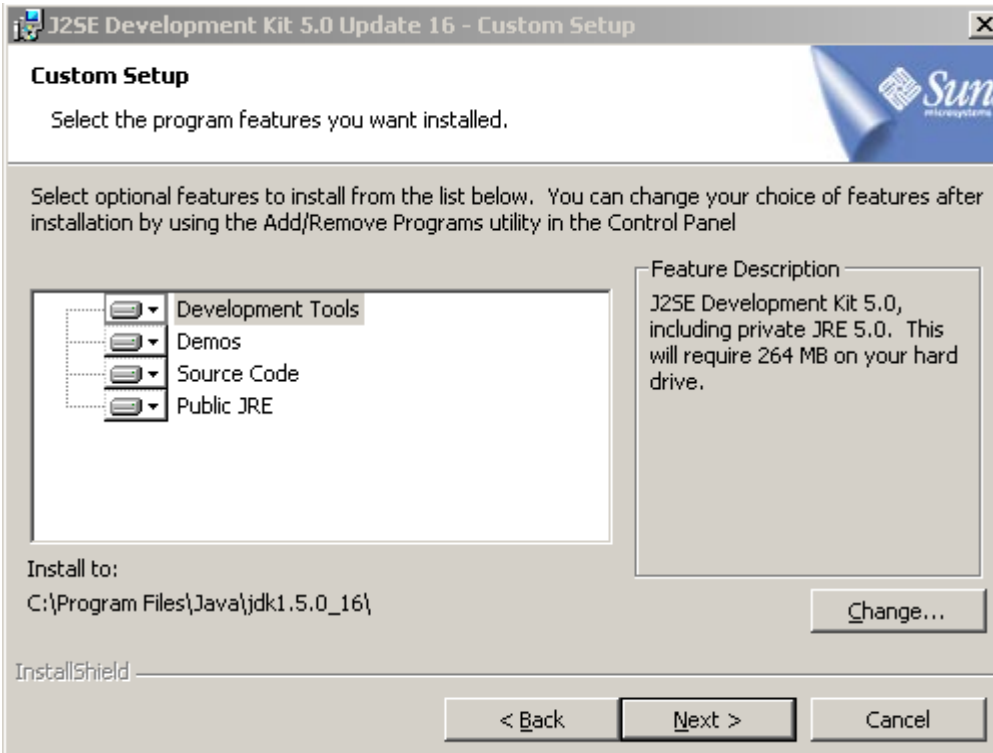
__1. Run the Java JDK installation program by running the following file:

C:\Software\jdk-1_5_0_16-windows-i586-p.exe

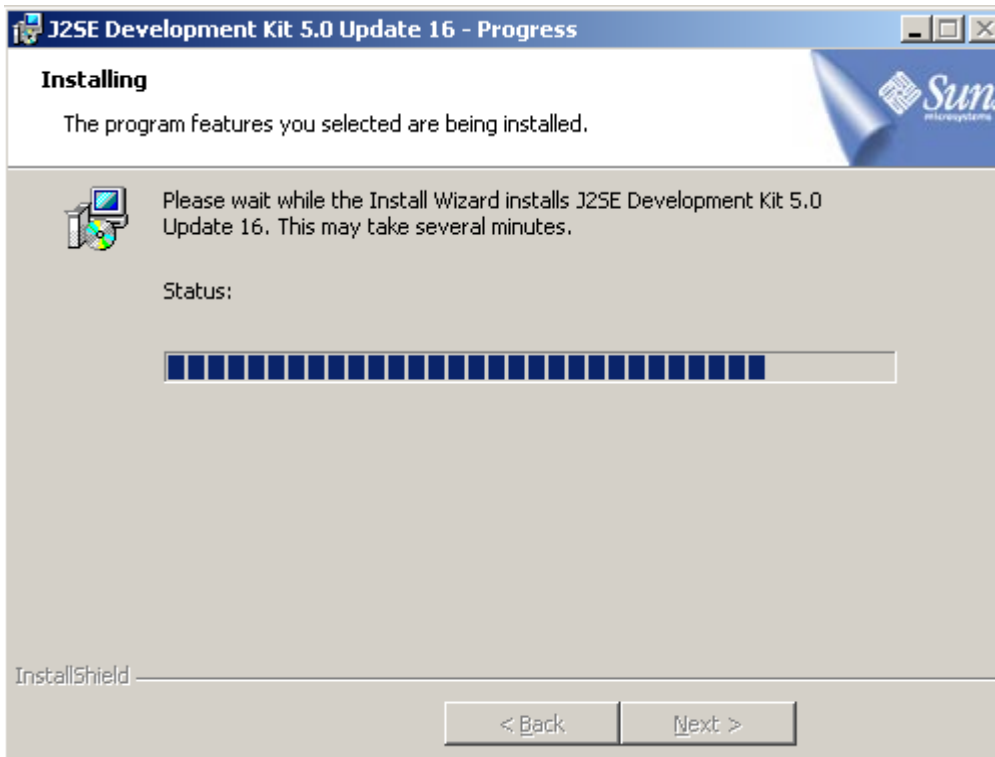
__2. The installation wizard will open. Accept the License Agreement and click **Next**.



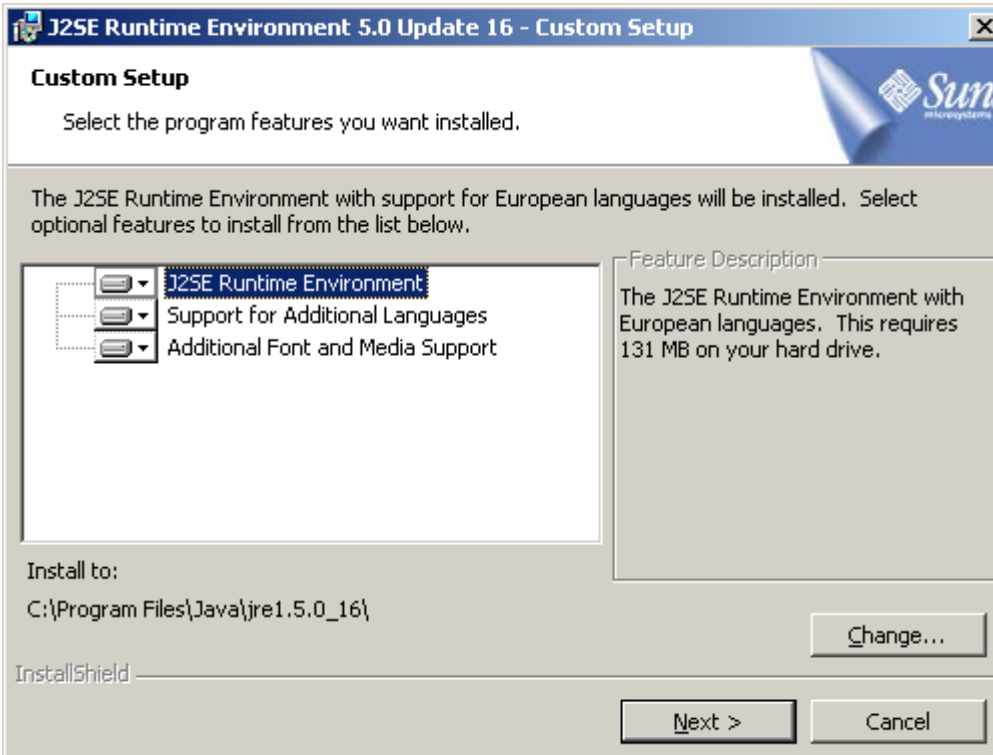
3. Leave the defaults on the Custom Setup screen and click **Next**.



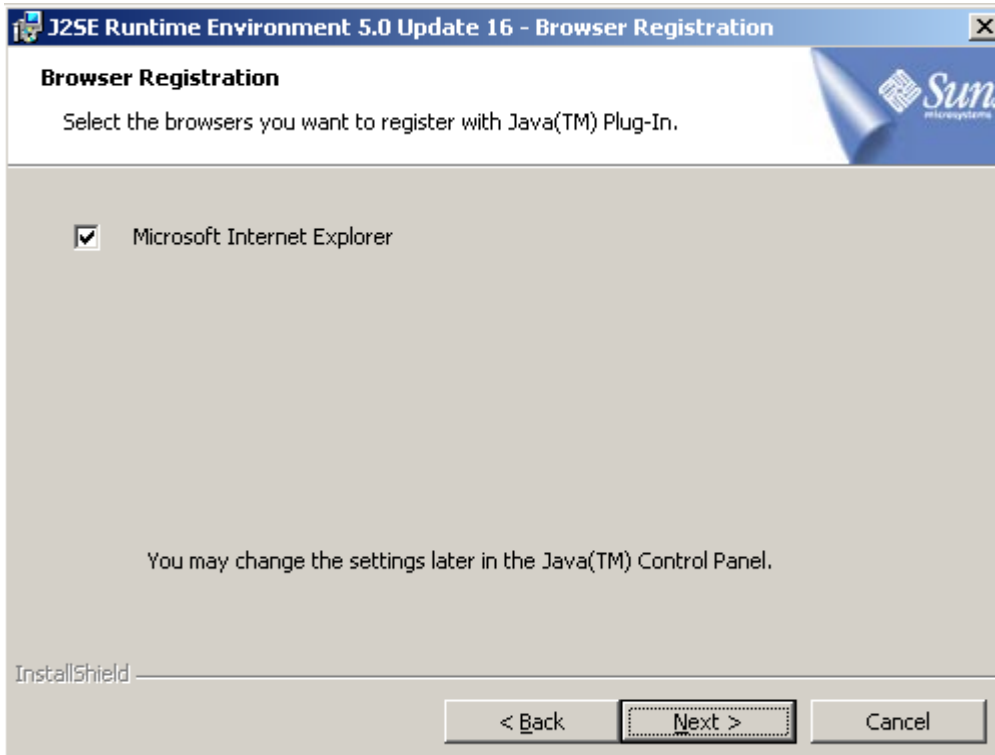
4. The software will start installing some of the components. Wait for it to complete.



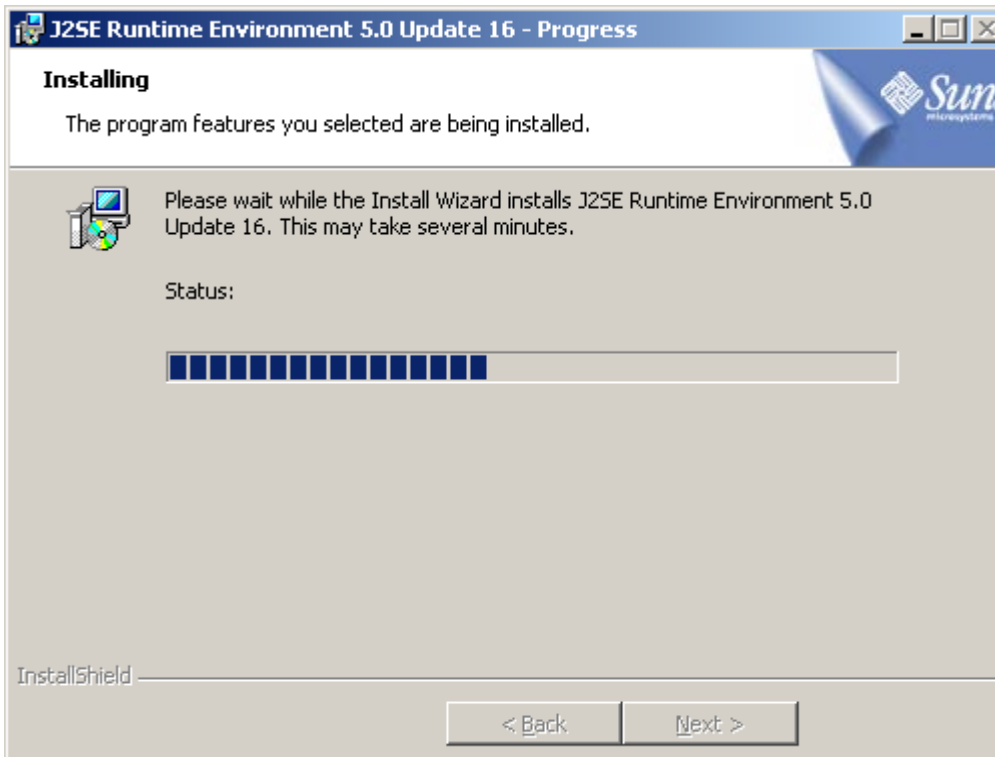
5. Accept the defaults for the language support options and click **Next**.



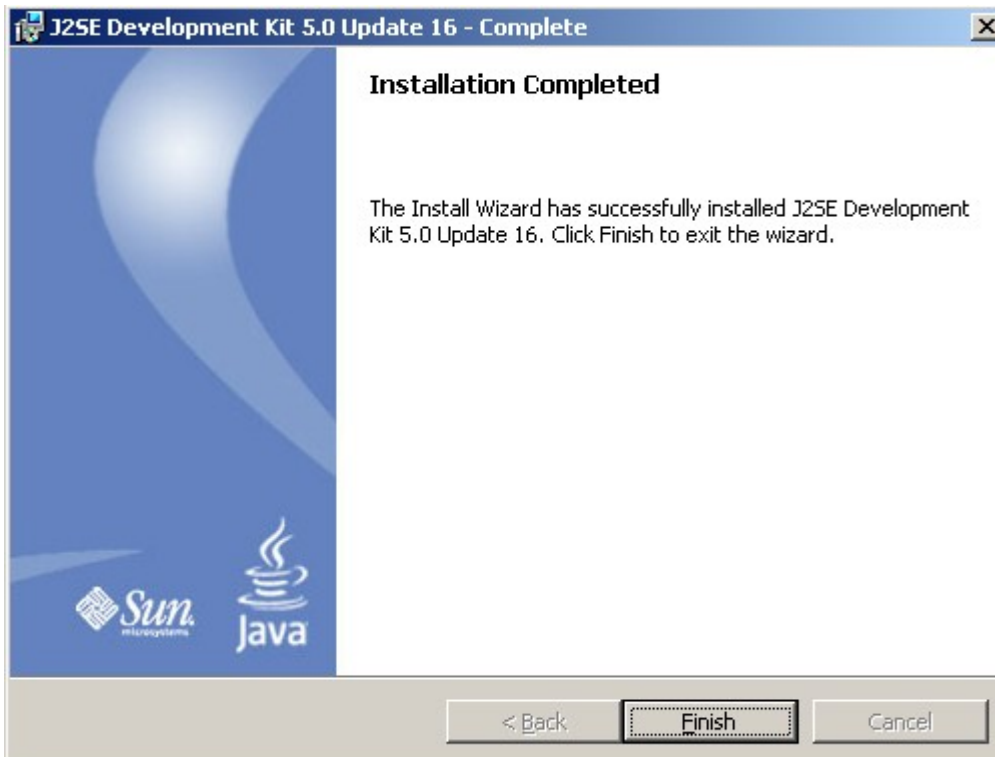
__6. Accept the defaults for browser registration and click **Next**.



__7. Wait for the installation to complete.



8. Once completed, click **Finish**.



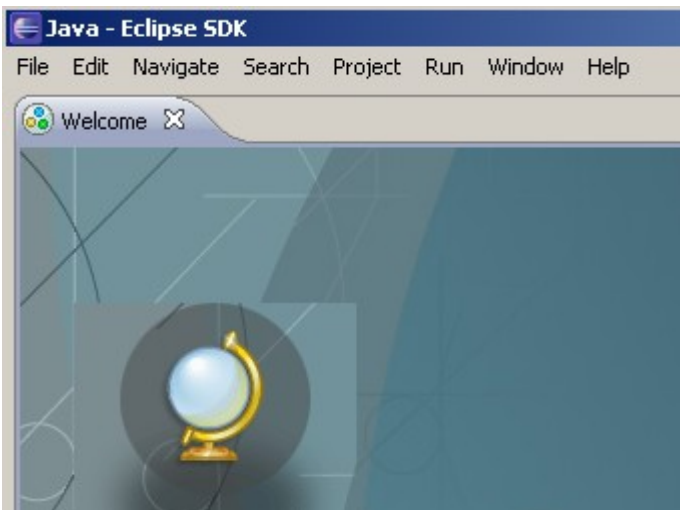
Part 3 - Configuring Eclipse SDK 3.4.1

__1. Run `c:\eclipse\eclipse.exe`



__2. A Workspace Launcher dialog will appear. Leave the default workspace and click **OK**.

__3. The Welcome page will open.



__4. Close Eclipse.

Congratulations. The installation of WA1220 Introduction to Developing OO Applications with Java for Procedural Developers has been completed.