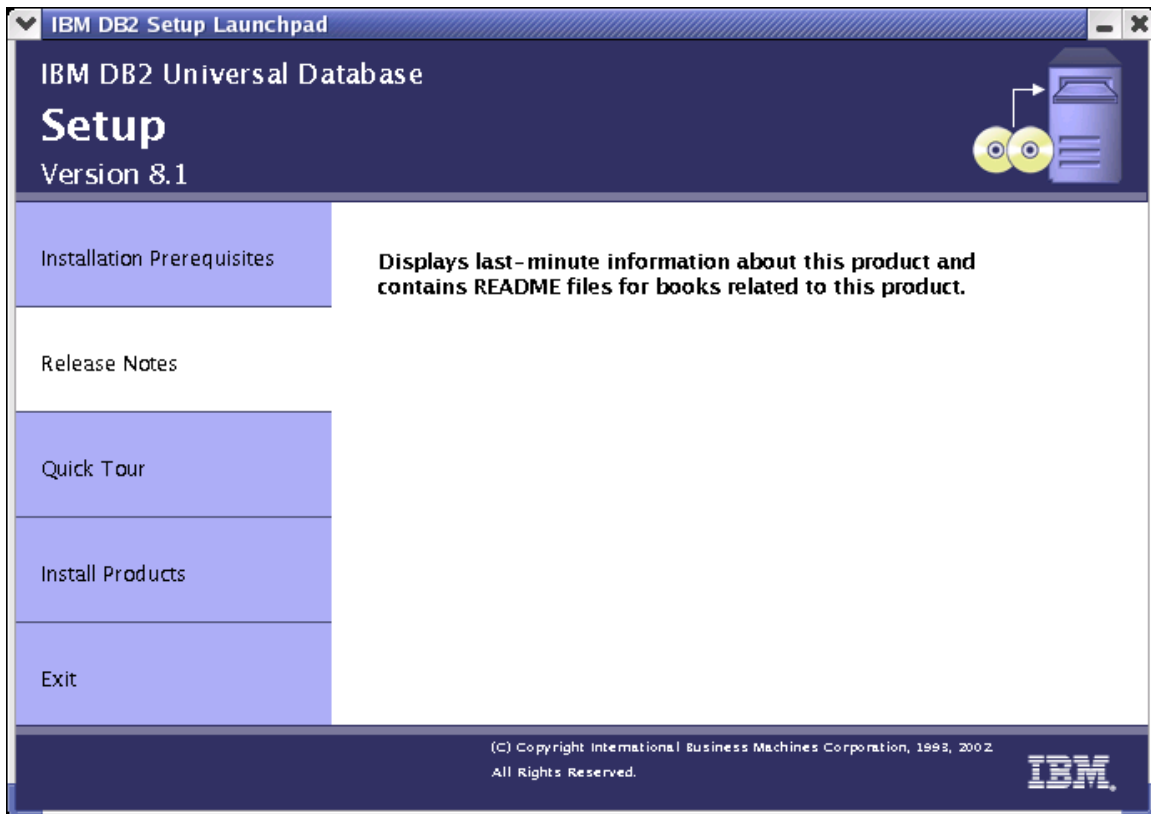


## DB2 V8.1 Setup Guide

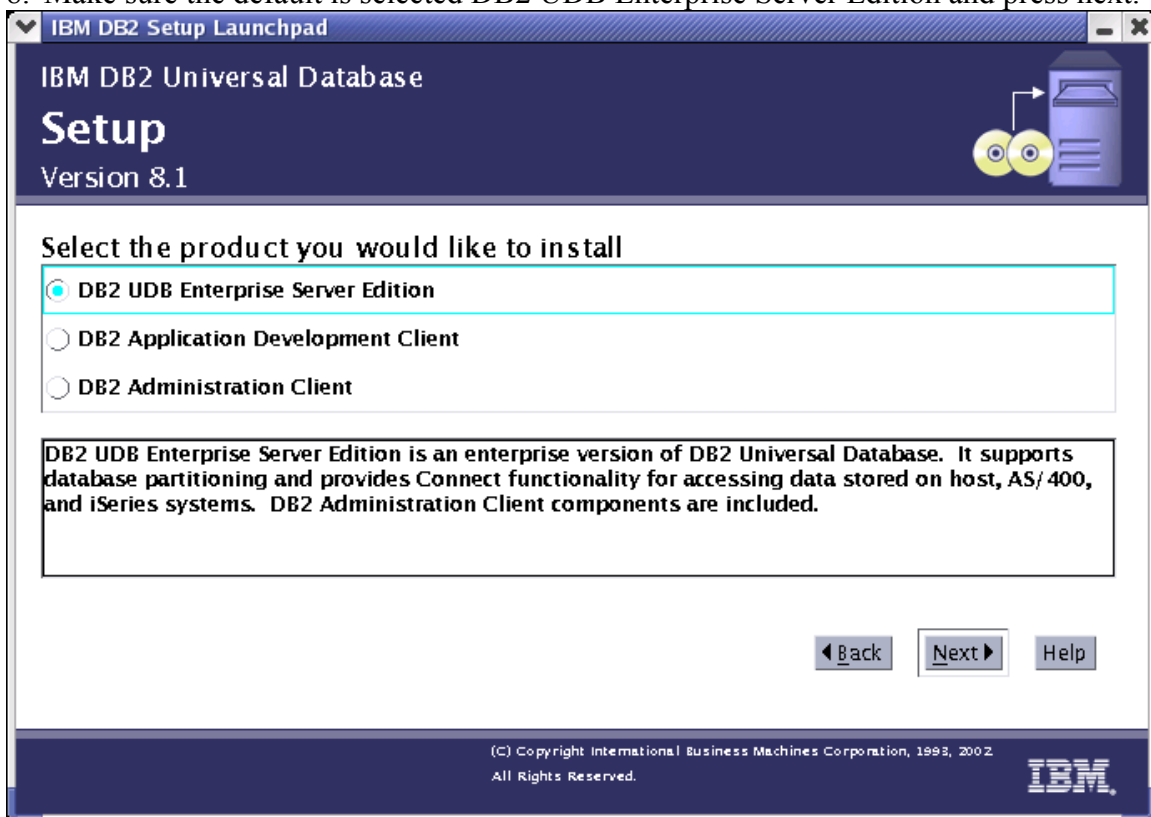
1. Before you can install DB2 you must edit the kernel parameters to install the software properly. Make sure you are logged in as root. Type the command **whoami** and make sure you see root. Open the **/etc/system** file in a text editor. At the end of the file add these lines:

```
set msgsys:msginfo_msgmax = 65535
set msgsys:msginfo_msgmnb = 65535
set msgsys:msginfo_msgmap = 1026
set msgsys:msginfo_msgmni = 1280
set msgsys:msginfo_msgtql = 1280
set semsys:seminfo_semmni = 1536
set semsys:seminfo_semmns = 16384
set semsys:seminfo_semmnu = 2048
set semsys:seminfo_semume = 256
set shmsys:shminfo_shmmax = 4294967295
set shmsys:shminfo_shmmni = 1536
set shmsys:shminfo_shmseg = 1024
set semsys:seminfo_semaem = 16384
set semsys:seminfo_semmap = 1026
set semsys:seminfo_semmsl = 100
set semsys:seminfo_semopm = 100
set shmsys:shminfo_shmseg = 240
set rlim_fd_cur=1024
```

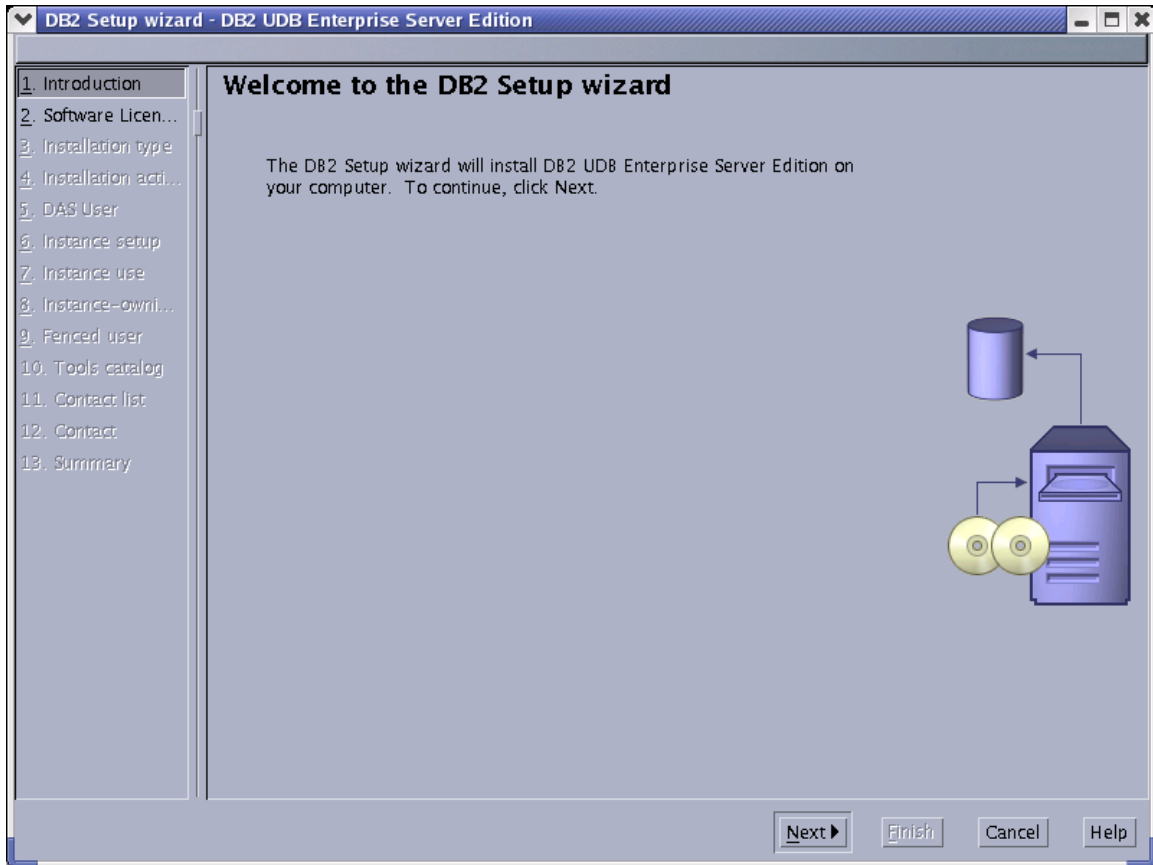
2. Save the file and then restart the computer. You can do this by opening a console and typing **init 6** in the console.
3. Once the computer has restarted login as root and go into the **/DB2** directory or insert the DB2 CD and copy the contents of the CD to a directory **/DB2**.
4. Run the command **gunzip ese.tar.Z** to extract the file. Wait a bit as it may take a while to extract the file.
5. Run the command **tar -xvf ese.tar** to untar the DB2 installation files.
6. Go into the new directory **ese** and run the command **./db2setup**.
7. The DB2setup GUI will start. Press Install Products to install the software.



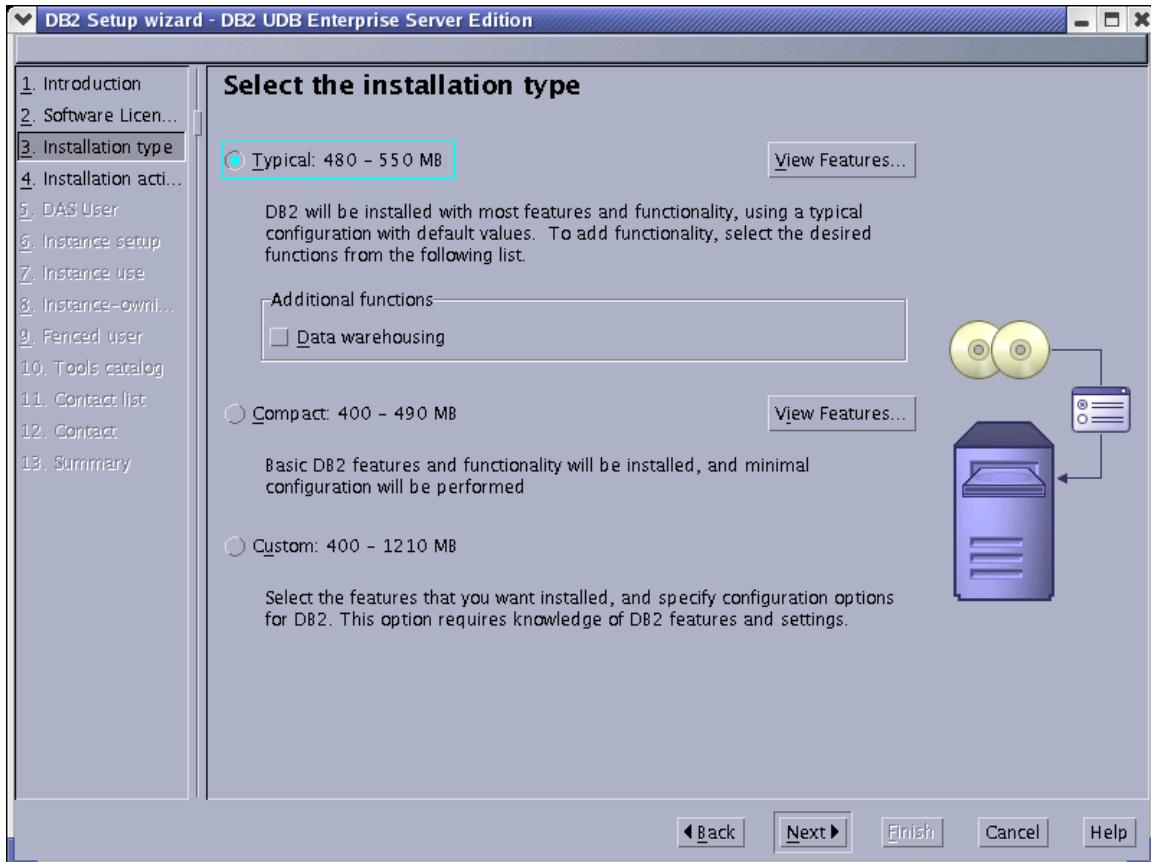
8. Make sure the default is selected DB2 UDB Enterprise Server Edition and press next.



9. Wait while the installation starts up. Press Next at the DB2 Setup wizard.



10. Accept the license and press next and select typical installation and press next.



11. Make sure Install DB2 UDB Server Edition on the computer is selected and then press next. At the setup user information for the DB2 Administration Server make the user name, group name, and password db2admin. Press Next.
12. Create a db2 instance or if you are running a 64 bit machine select 32 bit db2 instance and press next.
13. Create a single partition instance and press next.
14. At the set user information for the DB2 instance owner enter wasadmin for the user name, group name, and password. Press Finish.
15. At the screen set the user information for the fenced user add the password db2fenc1.
16. Press **next** through the rest of the screens and then press finish to begin the installation of the software.
17. Wait a bit while the software installs.
18. Press finish when the software is done installing.
19. Add the lines below to the file available under /etc/profile

```
#Setup DB2 environment for root user.
if [ -f /home/wasadmin/sqllib/db2profile ] then
./export/home/wasadmin/sqllib/db2profile
fi
```

20. Test db2 by logging in as wasadmin and typing db2 at the command prompt and make sure you see the prompt db2 =>. Do the same as root.

