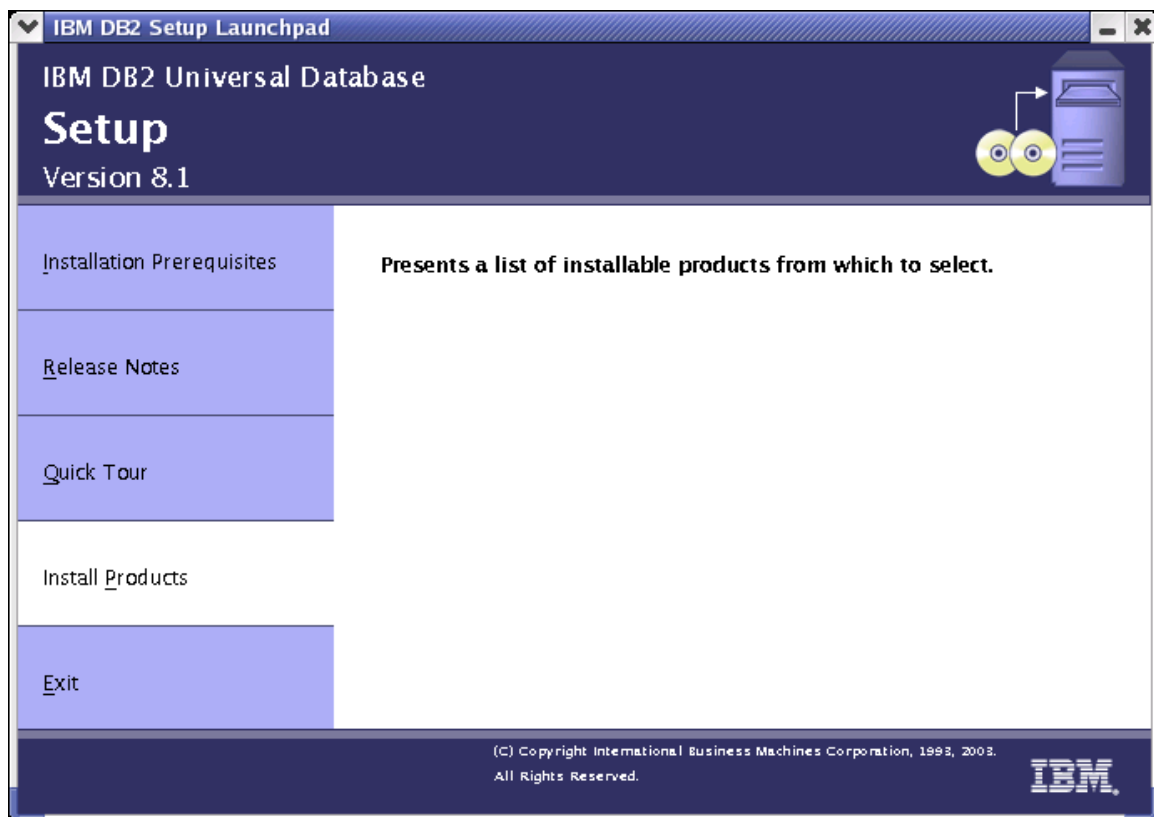
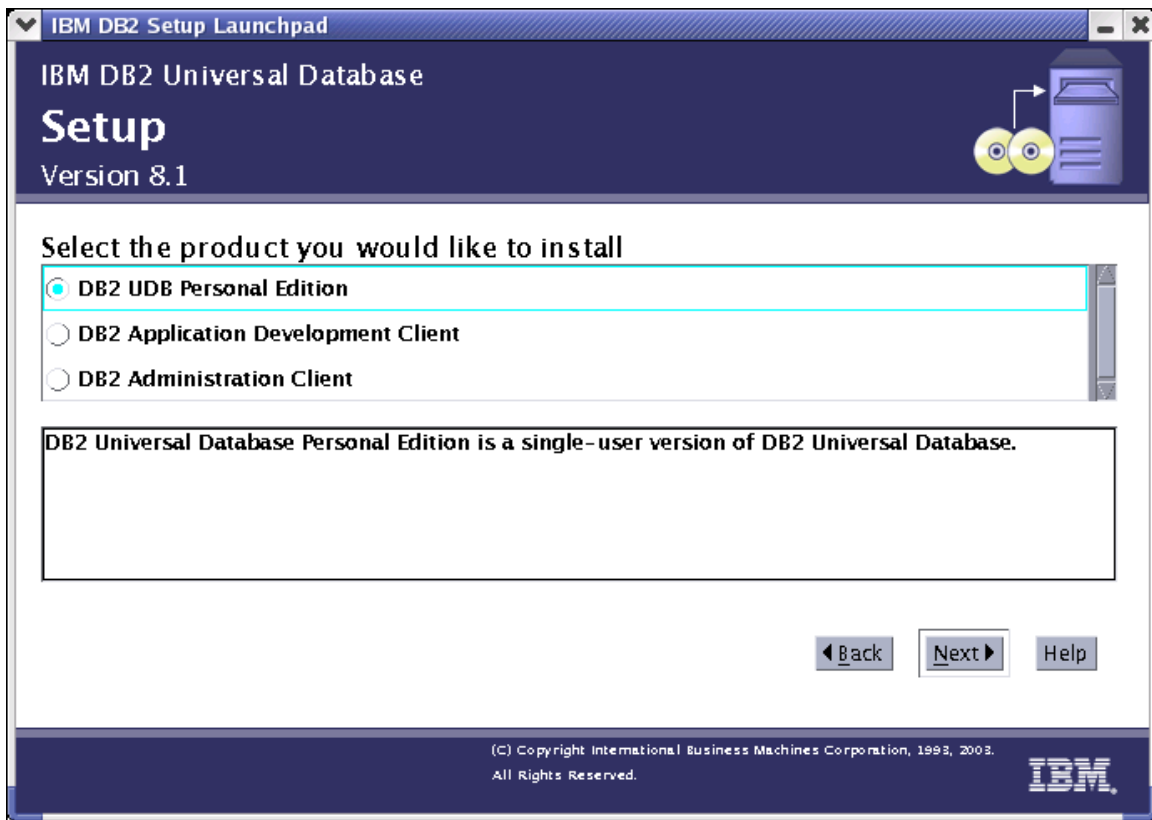


## DB2 V8.1 Setup Guide

1. Login into the computer as **root**.
2. Insert the CD labeled DB2 V8.1 Linux and the CD will mount automatically. Copy the contents of the CD to the directory **/db2setup**.
3. Untar the file using the command **tar -xvf \*.tar** from the **/db2setup** directory.
4. You will notice a new directory created in the directory **/db2setup** called **pe**. Go into this directory.
5. Run **db2setup** using the command **./db2setup**.
6. The DB2setup GUI will start. Press **Install Products** to install the software.



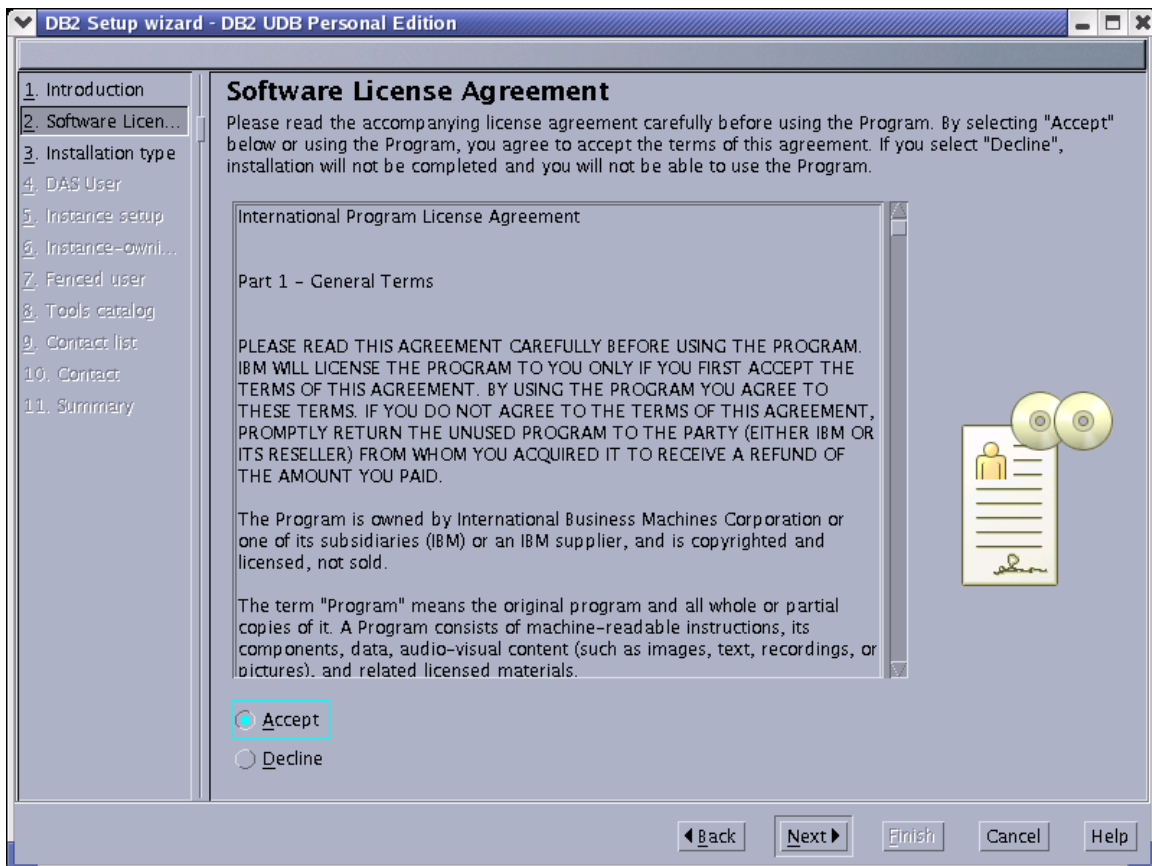
7. Make sure the default is selected **DB2 UDB Personal Edition** and press next.



8. Wait while the installation starts up. Press **Next** at the DB2 Setup wizard.



9. Accept the license and press **Next**.



10. Make sure typical installation is selected and press **Next**.

11. At the setup user information for the **DB2 Administration Server** make the user name, group name, and password **db2admin** and press **Next**.

DB2 Setup wizard - DB2 UDB Personal Edition

1. Introduction  
 2. Software Licen...  
 3. Installation type  
 4. DAS User  
 5. Instance setup  
 6. Instance-owni...  
 7. Fenced user  
 8. Tools catalog  
 9. Contact list  
 10. Contact  
 11. Summary

### Set user information for the DB2 Administration Server

The DB2 Administration Server (DAS) runs on your computer to provide support required by the DB2 tools. A user account with a minimal set of privileges is required to run the DAS. Specify the required user information for the DAS.

New user

User name: db2admin  
 UID:   Use default UID  
 Group name: db2admin  
 GID:   Use default GID  
 Password:   
 Confirm password:   
 Home directory: /home/db2admin ...

Existing user

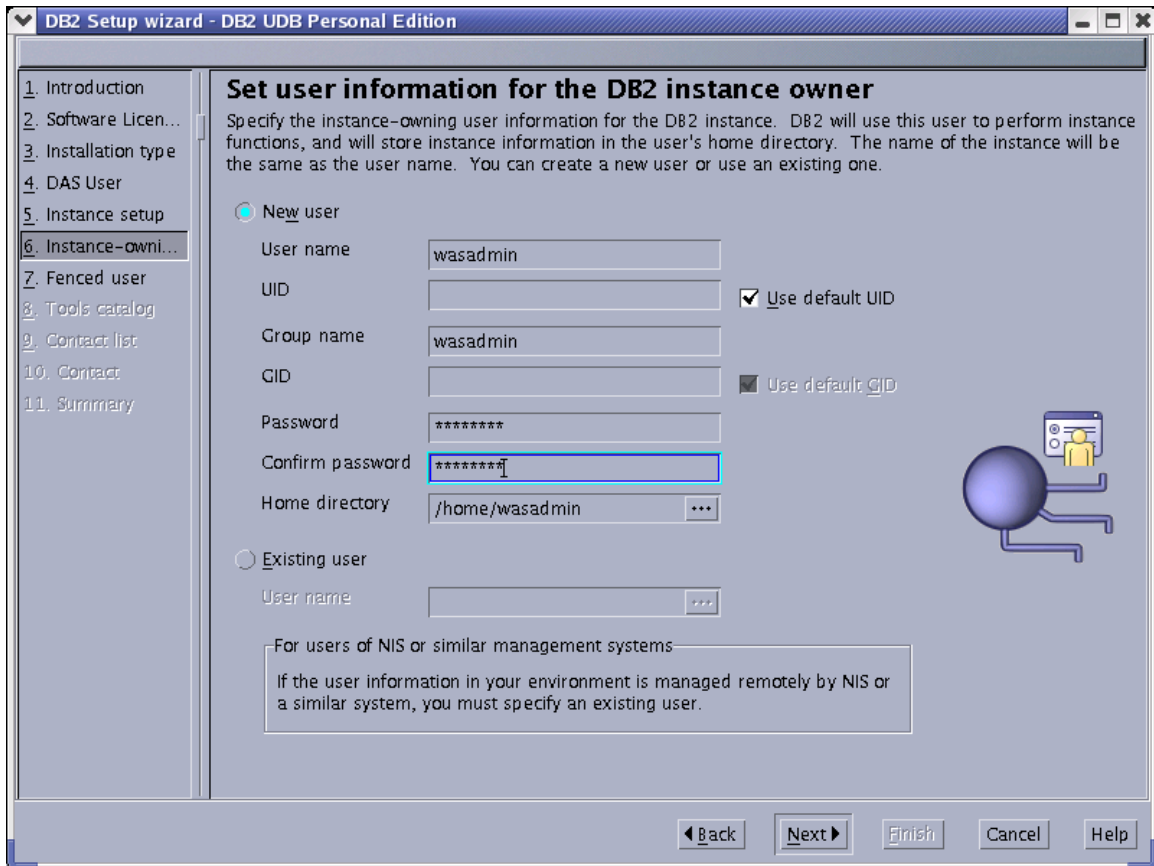
User name:

For users of NIS or similar management systems  
 If the user information in your environment is managed remotely by NIS or a similar system, you must specify an existing user.

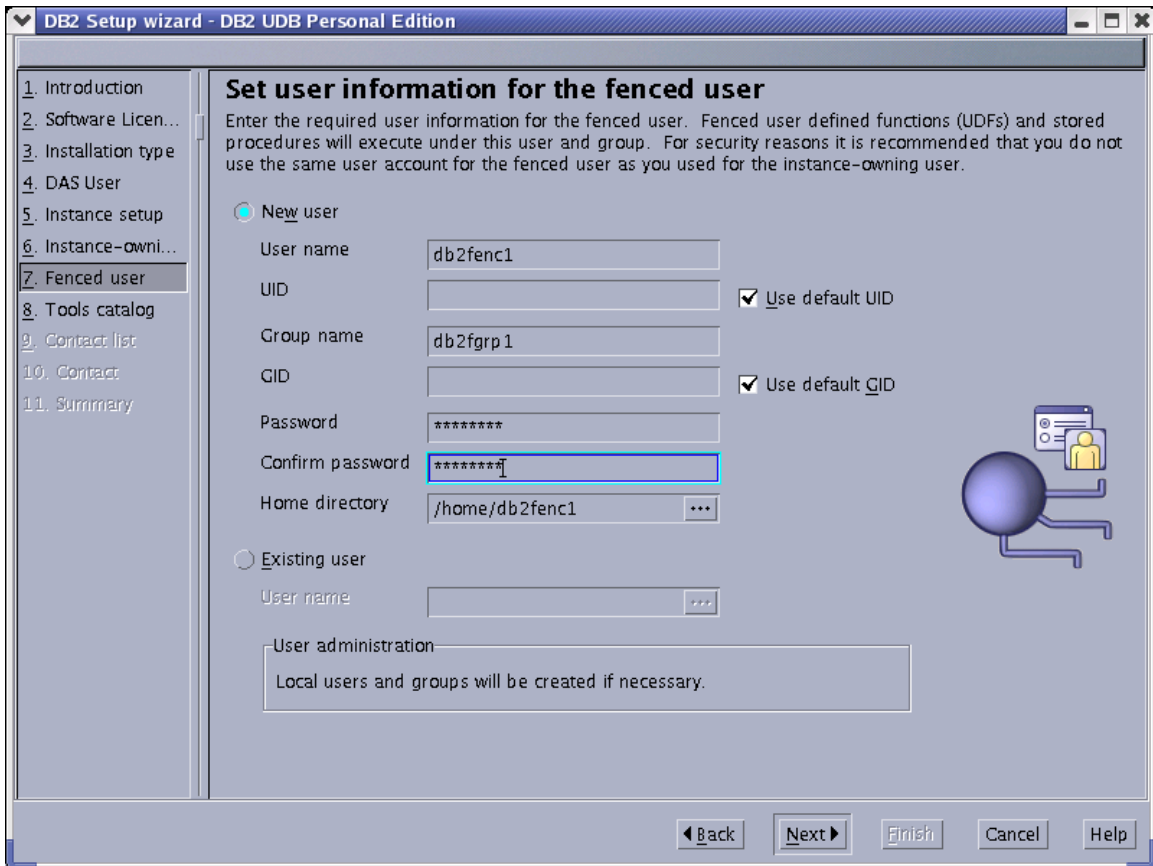
◀ Back   Next ▶   Finish   Cancel   Help

12. Create a **db2** instance and press **Next**.

13. At the set user information for the DB2 instance owner enter **wasadmin** for the user name, group name, and password. Press **Next**.



14. At the screen set the user information for the fenced user add the password **db2fenc1**.



15. Press **next** through the rest of the screens and then press **Finish** to begin the installation of the software.
16. Wait a bit while the software installs.
17. Press finish when the software is done installing.
18. Add the lines below to the file available under `/root/.bashrc` and log in and out as root.

```
#Setup DB2 environment for root user.
if [ -f /home/wasadmin/sqllib/db2profile ]; then
  . /home/wasadmin/sqllib/db2profile
fi
```

19. From root type db2 into a terminal and make sure you see the db2 prompt. Login as wasadmin using the command `su – wasadmin`. Type db2 at the prompt and make sure you see the db2 prompt. Logout of the **wasadmin** by hitting **ctrl** and **D** keys at the same time to logout.