

WA1804 WebSphere Enterprise Service Bus v6.2 Administration

Classroom Setup Guide

Web Age Solutions Inc.

Table of Contents

| | |
|---|----|
| Part 1 - Minimum Hardware Requirements | 3 |
| Part 2 - Minimum Software Requirements | 4 |
| Part 3 - Software Provided..... | 5 |
| Part 4 - Important Ghosting or Imaging Information..... | 6 |
| Part 5 - Installation..... | 7 |
| Part 6 - Installing WebSphere Integration Developer v6.2..... | 8 |
| Part 7 - Installing DB2 Enterprise Server Edition v9.5..... | 15 |
| Part 8 - Installing WebSphere MQ v6.0 Trial..... | 24 |

Part 1 - Minimum Hardware Requirements

- Pentium 4 – 1.4 GHz or higher
- 2 GB RAM minimum
- 24 GB free on the C drive.
- Ethernet or Token Ring card
- USB port
- Network connectivity to the Internet

Part 2 - Minimum Software Requirements

- Microsoft Windows XP SP2
- Internet Explorer 6.0, Mozilla Firefox 2.0 (or higher)
- WebSphere Application Developer Supplements v6.1
- WebSphere ESB v6.2 *
- WebSphere Integration Developer v6.2 (WID v6.2) *
- DB2 Enterprise Server Edition v9.5 *
- WebSphere MQ 6.0 *

* - indicates software provided as part of the courseware.

Part 3 - Software Provided

Number of USB memory sticks that you will receive: **3**

Name of the files containing in the memory sticks (one file per memory stick):

- **WA1804_1.ZIP**
- **WA1804_2.ZIP**
- **WA1804_3.ZIP**

All other software listed under Minimum Software Requirements is either commercially licensed software that you must provide or software that is freely available.

Part 4 - Important Ghosting or Imaging Information

Some of the software installed for this course will not function after changing the computer hostname. As such, cloning or imaging should not be used on a fully installed system.

You can save time by extracting the contents of the USB memory stick to C:\ on a clean OS install (no other software installed) and then imaging that hard drive. After restoring the image to the other computers and changing the hostnames, you can then install the software on each computer individually by following the instructions that are detailed later in this document.

Part 5 - Installation

__1. Create a user named **wasadmin** with password **wasadmin** who belongs to the Administrators group.

__2. Log in as **wasadmin**.

__3. From a USB memory stick, extract the **WA1804_1.ZIP** file to C:\

__4. From a USB memory stick, extract the **WA1804_2.ZIP** file to C:\

__5. From a USB memory stick, extract the **WA1804_3.ZIP** file to C:\

__6. Review that the following folders were created:

- **C:\LabFiles**
- **C:\Software**
- **C:\Software\DB2 v9.5 ESE**
- **C:\Software\ESB62**
- **C:\Software\WAS ND v61**
- **C:\Software\WebSphere MQ v6.0 Trial**
- **C:\Software\WID6.2**

Part 6 - Installing WebSphere Integration Developer v6.2



Warning: You cannot use ghosting or disk imaging to install this software. You must install the software on each machine separately. Do not change the computer hostname after this software is installed. Also, do not install this software from a network share. It will only function partially if you do.

Average time to install this software: 40 minutes

__1. From C:\Software\WID6.2\disk1, run **launchpad.exe**



__2. Select **English** and click **OK**.

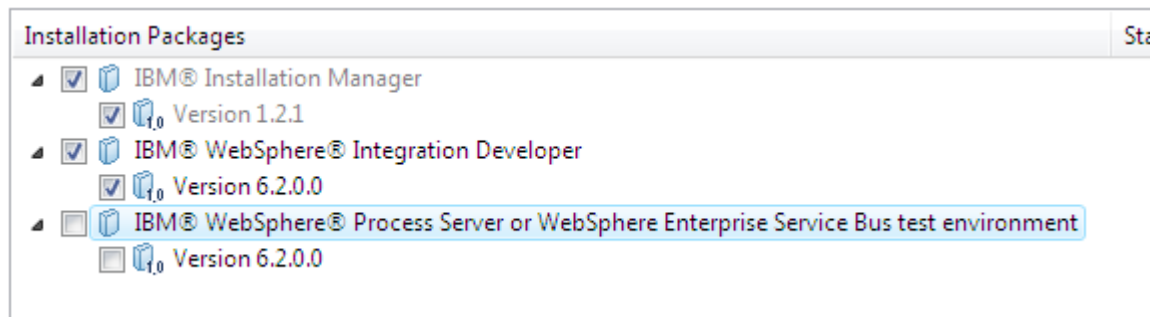
The Software Development Platform page will open.



__3. Click on **Install IBM WebSphere Integration Developer V6.2**

The Install Packages page will open.

__4. **Uncheck the "IBM WebSphere Process Server or WebSphere Enterprise Service Bus test environment".**



__5. Make sure your options are configured as show above and click **Next**.

__6. Accept the license terms and click **Next**.

__7. Leave the default directories for the Shared Resources and Installation Manager and click **Next**.

Install Packages

Select a location for the shared resources directory and a location for Installation Manager.

Install

Licenses

Location

Features

Summary

When you install packages, files are stored in two locations:



- 1) The shared resources directory - resources that can be shared by multiple packages.
- 2) The installation directory - any resources that are unique to the package that you are installing.

Important: You can only select the shared resources directory the first time you install a package because it must have adequate space for the shared resources of future packages.

Shared Resources Directory:

C:\Program Files\IBM\SDPShared



Once installed, IBM Installation Manager will be used to install, update, modify, manage

Installation Manager Directory:

C:\Program Files\IBM\Installation Manager\eclipse

The Installation directory for WID will open.

__8. Change the installation location to **C:\WID62**

Install Packages

A package group is a location that contains one or more packages. Some packages can be installed into a common package group existing package group, or create a new one.

Install Licenses Location Features Summary

Use the existing package group

Create a new package group

| Package Group Name | Installation Directory |
|-------------------------------------|------------------------|
| IBM WebSphere Integration Developer | C:\WID62 |

Package Group Name: IBM WebSphere Integration Developer

Installation Directory: C:\WID62

Details

Shared Resources Directory: C:\Program Files\IBM\SDPShared

Disk Space Information

| Volume | Available Space |
|--------|-----------------|
| C: | 13.62 GB |

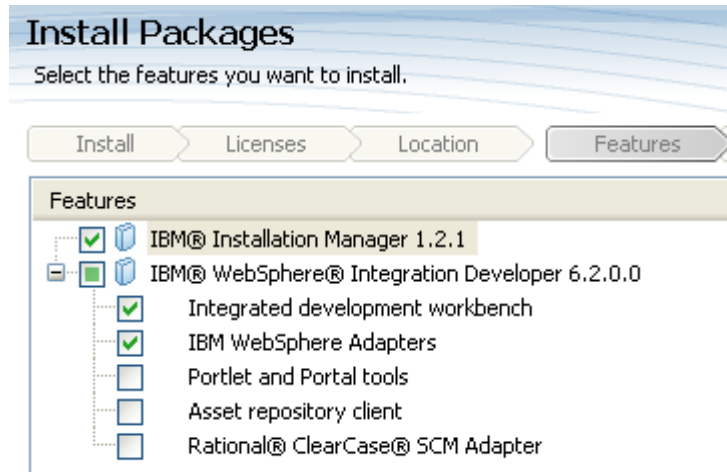


Important: You must make this change. The default installation location is too long and will cause problems with the functionality of the product.

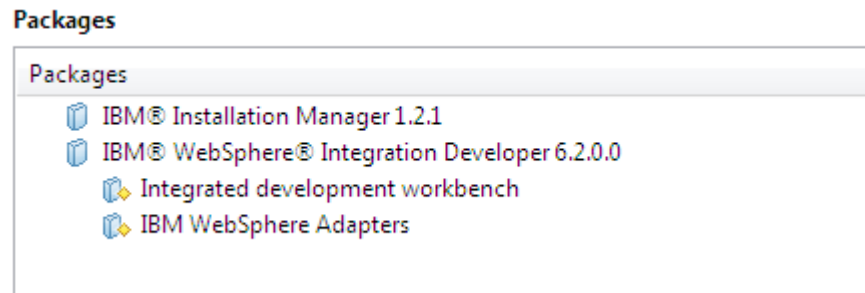
__ 9. Click **Next**.

__ 10. Leave the default language and click **Next**.

__ 11. The features to install page will open. Leave the defaults and click **Next**.



The **Summary** page will open.



__12. Click **Install**.

Installation will start. This process will take some time.

► **Repository Information**

Installing.

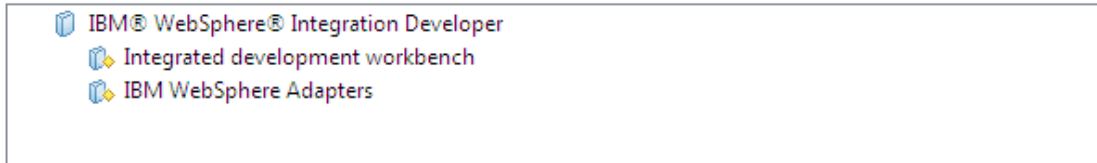


When the installation is done you will see this page:



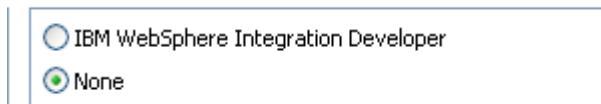
Success! The installation was successful. [View Log File](#)

The following package was installed into package group IBM WebSphere Integration Developer:



__13. Select **None**.

Which of the following packages would you like to start?



__14. Click **Finish**.

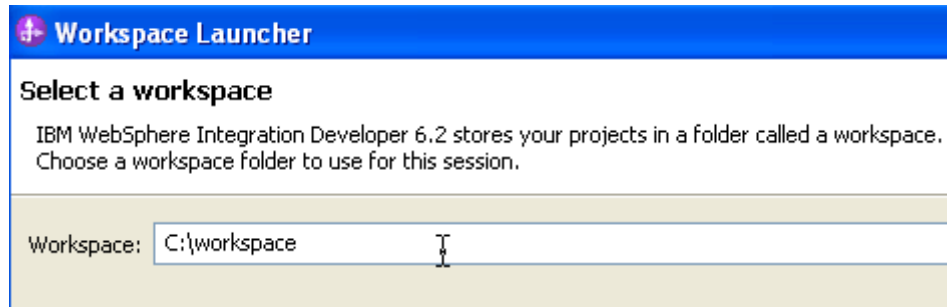
__15. Close the Software Development Platform window.

Verification of the installation of WID 6.2

__1. Launch WID using the following Windows start menu: **Start->All programs->IBM WebSphere Integration Developer->IBM WebSphere Integration Developer V6.2->WebSphere Integration Developer V6.2**

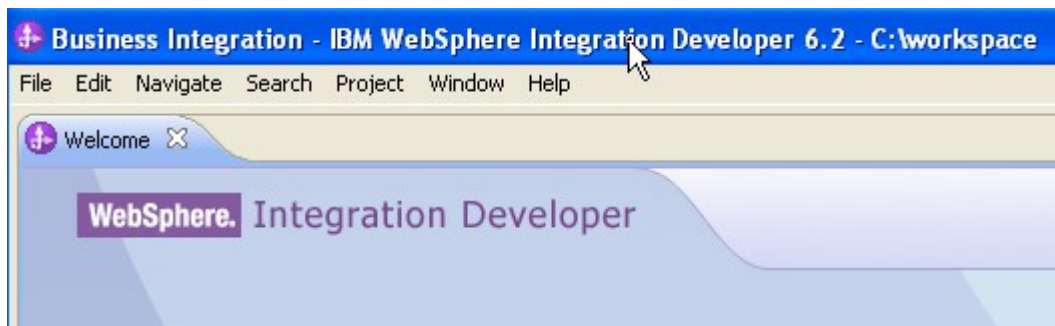


__2. Change the workspace to **C:\workspace** as shown below.



__3. Click **OK**.

__4. The Welcome window will open. Close it.



__5. Exit WID by choosing **File->Exit** from the menu bar.

__6. Close all the open files.

WebSphere Integration Developer v6.2 has installed successfully.

Part 7 - Installing DB2 Enterprise Server Edition v9.5

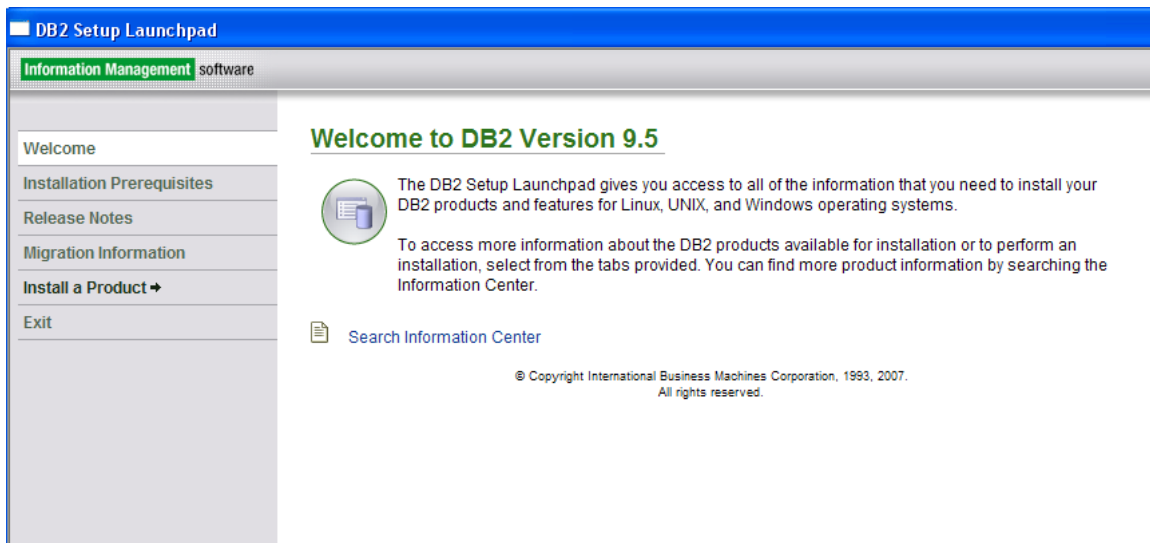


Warning: You cannot use ghosting or disk imaging to install this software. You must install the software on each machine separately. Do not change the computer hostname after this software is installed. Also, do not install this software from a network share. It will only function partially if you do.

Average time to install this software: 20 minutes

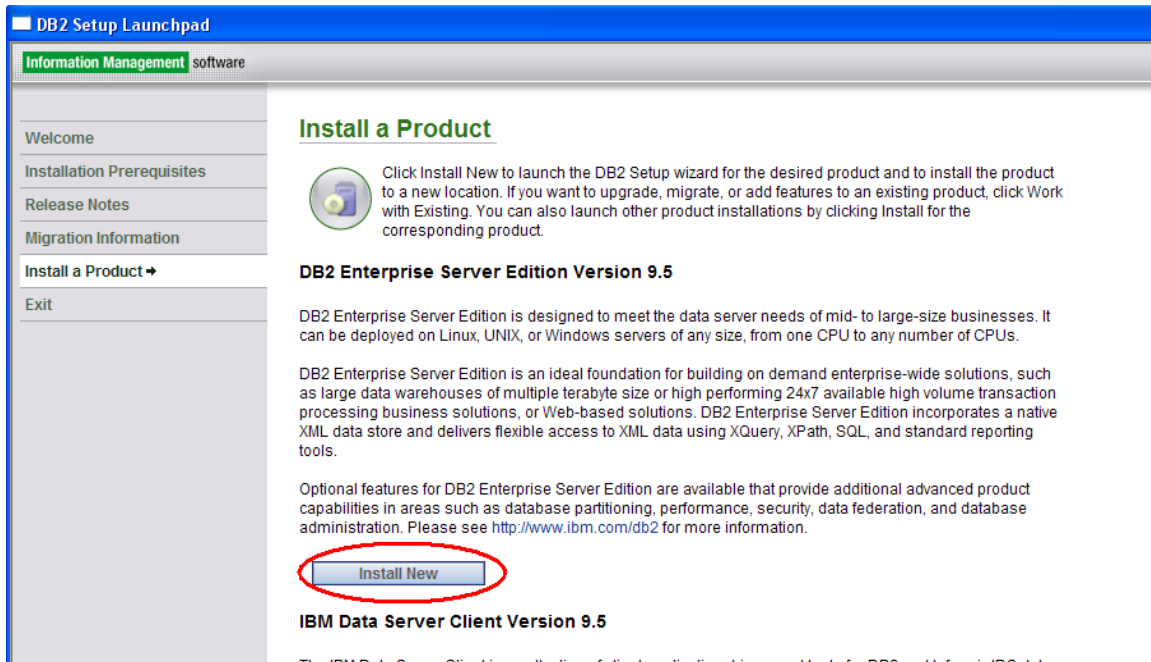
__1. Browse to **C:\Software\DB2 v9.5 ESE** and launch **setup.exe**.

The **DB2 Setup Launchpad** page will appear.



__2. Click **Install a Product**.

The *Install a Product* page will appear.



3. Click the **Install New** button underneath the **DB2 Enterprise Server Edition Version 9.5** heading.

Wait a few seconds until the *Welcome to the DB2 Setup wizard for DB2 Enterprise Server Edition, Version 9.5* page appears.



__4. Click **Next**.

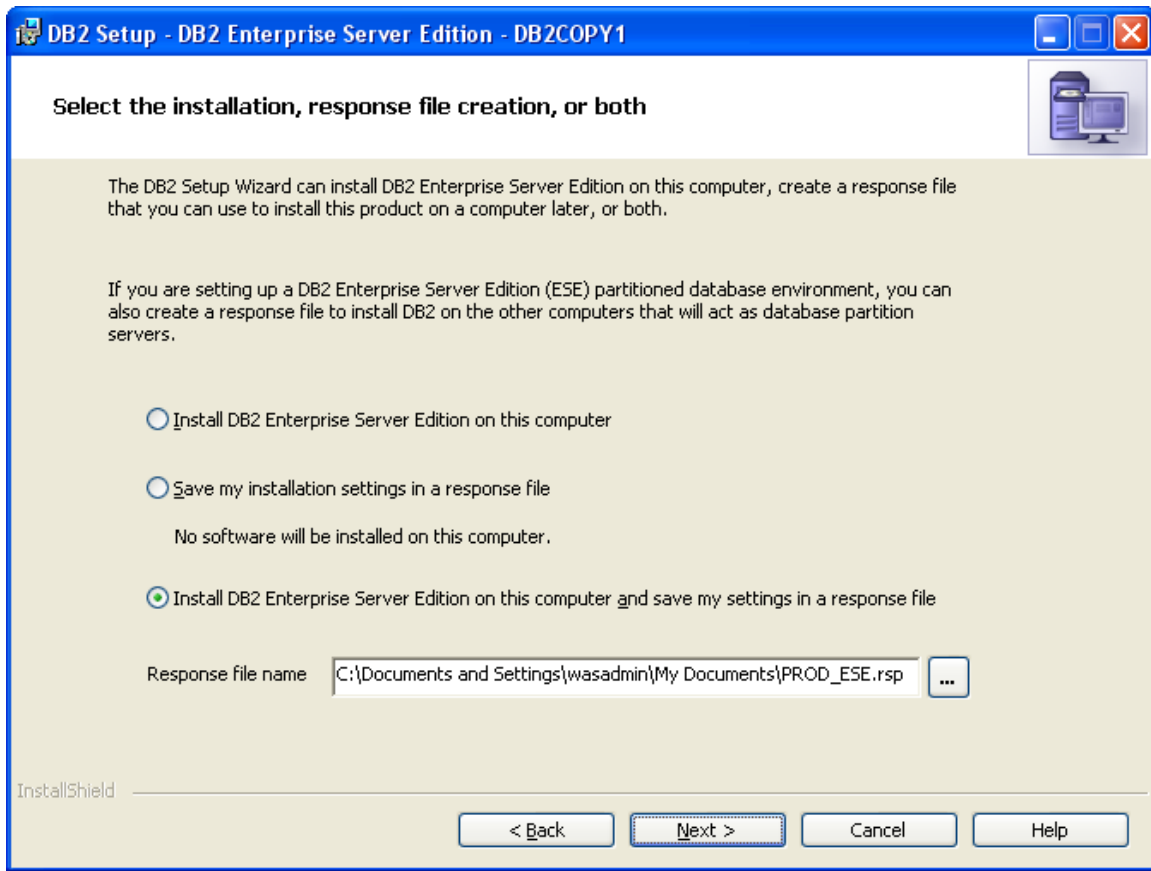
__5. The *Software License Agreement* page will appear. Click the **I accept the terms in the license agreement** radio button.

__6. Click **Next**.

The *Select the installation type* page will appear.

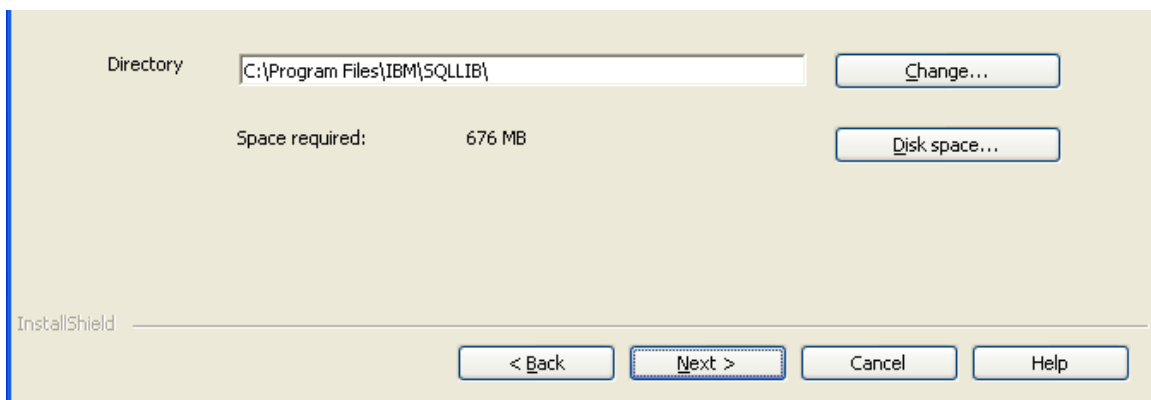
__7. Leave the **Typical** installation option selected and click **Next**.

The *Select the installation action, response file creation, or both* page will appear.



__ 8. Leave **Install DB2 Enterprise Server Edition on this computer and save my settings in a response file** selected and click **Next**.

The *Select the installation folder* page will appear.



__ 9. Leave the default directory and click **Next**.

__ 10. The *Set user information for the DB2 Administration Server* page will appear.

Change the **Password** (and **Confirm Password**) to **db2admin**

User information

Domain: None - use local user account

User name: db2admin

Password: *****

Confirm password: *****

Use the same user name and password for the remaining DB2 services

InstallShield

< Back Next > Cancel Help

Note: If you can't use this password because of password policies use a password that will satisfy password policies. Make sure to tell the instructor that the DB2 software was installed with a different user and/or password.

__ 11. Click **Next**.

The *Configure DB2 instances* page will appear.

__ 12. Leave the defaults and click **Next**.

The *Prepare theDB2 tools catalog* page will appear.

__ 13. Leave the defaults and click **Next**.

The *Set up notifications* page will appear.

__ 14. Uncheck **Set up your DB2 server to send notifications**.

Set up your DB2 server to send notifications

Notification SMTP server

Administration contact list location

Local - Create a contact list on this computer

Remote - Use an existing contact list on another DB2 server

Remote DB2 server

__15. Click **Next**.

The *Enable operating system security for DB2 objects* page will appear.

__16. Uncheck **Enable operating system security**.

Enable operating system security

Information on the DB2 administrators group and DB2 users group is available by clicking Help.

DB2 administrators group

Domain

Group name

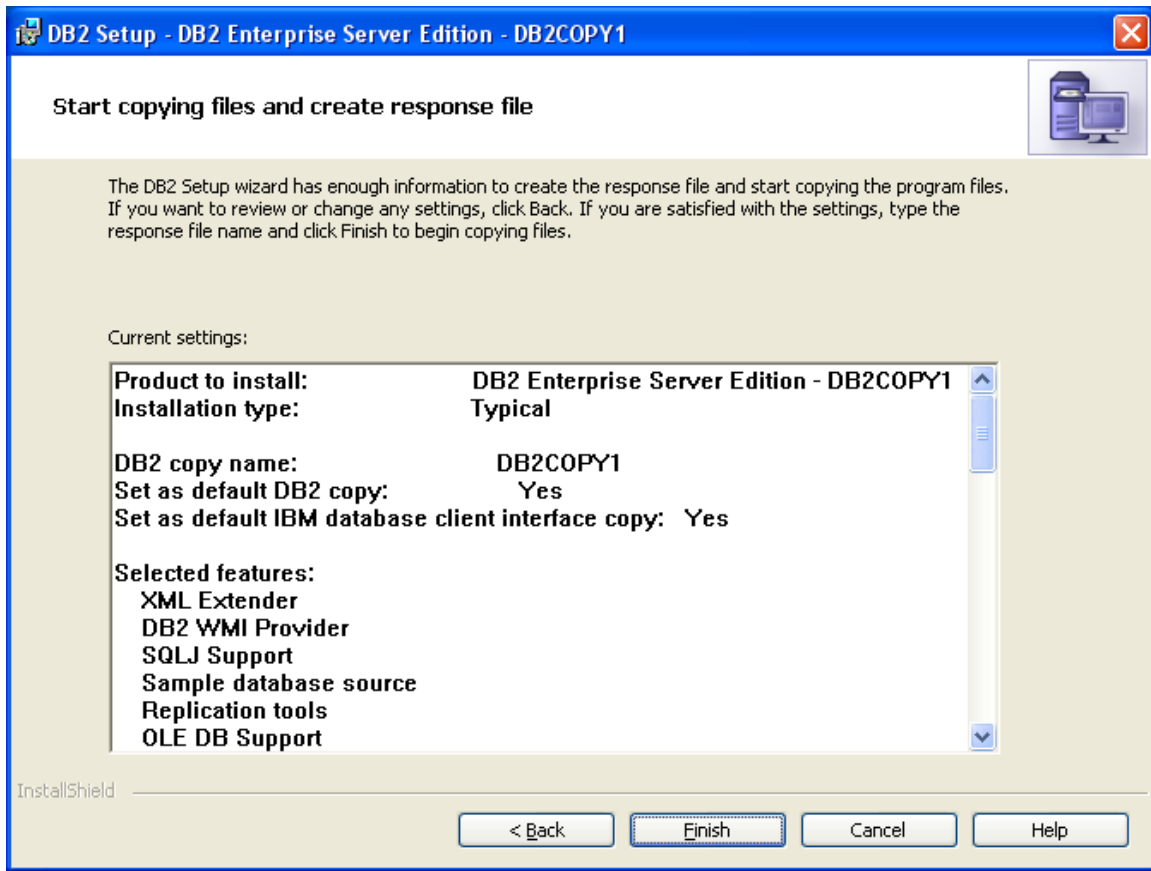
DB2 users group

Domain

Group name

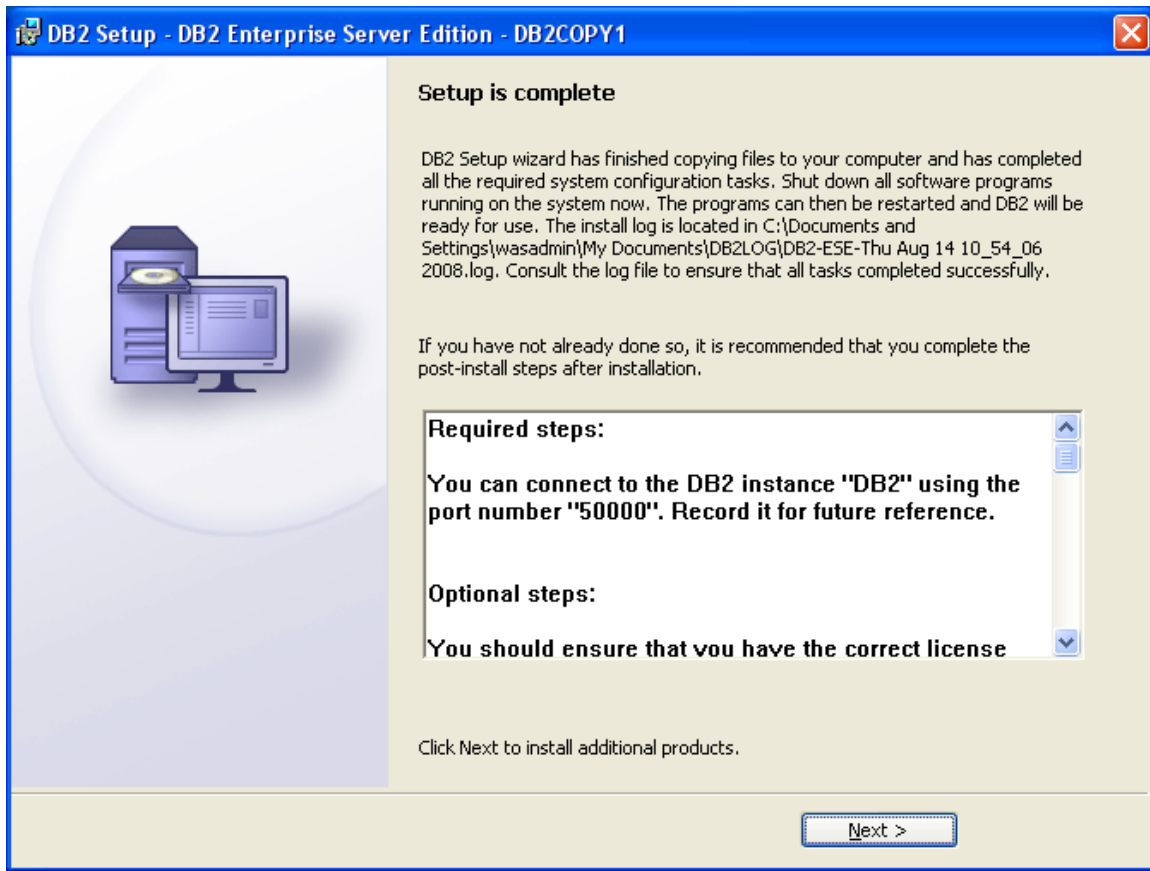
__17. Click **Next**.

The *Start copying files and create response file* page will appear.



__18. Click **Finish** and DB2 will begin installing. This will take some time.

Eventually, the *Setup is complete* page will appear.



__19. Click **Next**.

The *Install additional products* page will appear.

__20. Click **Finish**.

__21. If the *DB2 First Steps* dialog appears then close it, we don't need the first steps for the class.

The *Welcome to First Steps for DB2 Database for Linux, UNIX, and Windows* page will appear.

DB2 Database for Linux, UNIX, and Windows
Version 9.5

Welcome to First Steps

Database Creation

Database Administration


Application Development

Technical Resources

Product Updates

Exit

Welcome to First Steps for DB2 Database for Linux, UNIX, and Windows



First Steps introduces some of the key database functions that you can perform using DB2 database systems. These include accessing and managing data objects, maintaining databases automatically by taking advantage of autonomic capabilities, and protecting data using access control techniques. First Steps also points you to additional sources of information about DB2 database systems and its features.

The [Control Center](#) is set of tools that you can use to manage and administer your data servers and databases. The [Command Line Processor \(CLP\)](#) is a text-based interface that you can use to run DB2 commands, SQL statements, and database utilities. These interfaces are included with the IBM Data Server Client.

In addition to the CLP and the Control Center, you may want use the data server administrator tool, a Web-based application to manage your DB2 data servers. It helps you maintain required levels of performance by reducing the time to resolve problems and ultimately avoid problems altogether. Further information on how to obtain the data server administrator tool is described in the [Database Administration](#) section of First Steps.

Details on all product features and licensing terms included with DB2 database products are available in the [DB2 Version 9.5 product licensing information technote](#).

First Steps helps you perform the following tasks:

- ◆ [Create the SAMPLE database](#)
- ◆ [Create your own database](#)
- ◆ [View and administer your databases](#)
- ◆ [Create an application using various development environments](#), including the data server developer tool, IBM Rational development tools, and Microsoft® Visual Studio 2005

Done

__22. Click the **Exit** link to close the window.

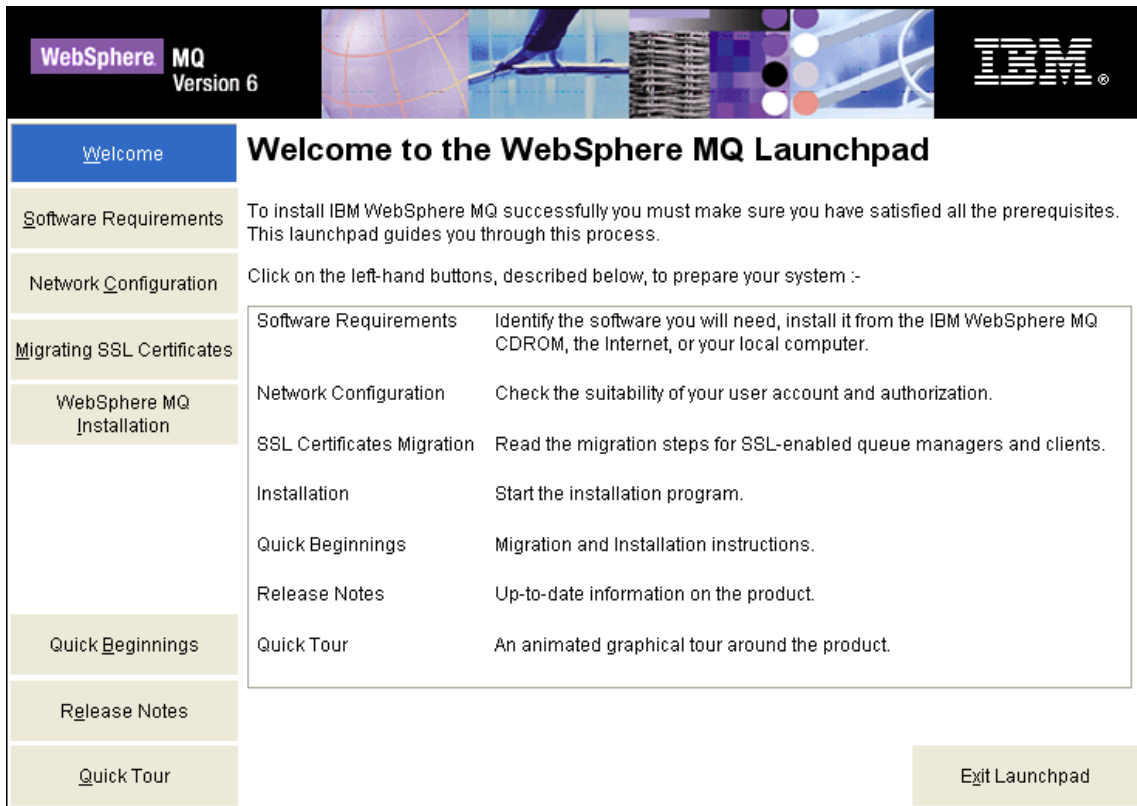
__23. Restart the computer.

DB2 Enterprise Server Edition v9.5 installation is completed.

Part 8 - Installing WebSphere MQ v6.0 Trial

Average time to install the software: 20 minutes

1. Run **Setup.exe** from the **C:\Software\WebSphere MQ v6.0 Trial** folder. The **WebSphere MQ Launchpad** should open up.

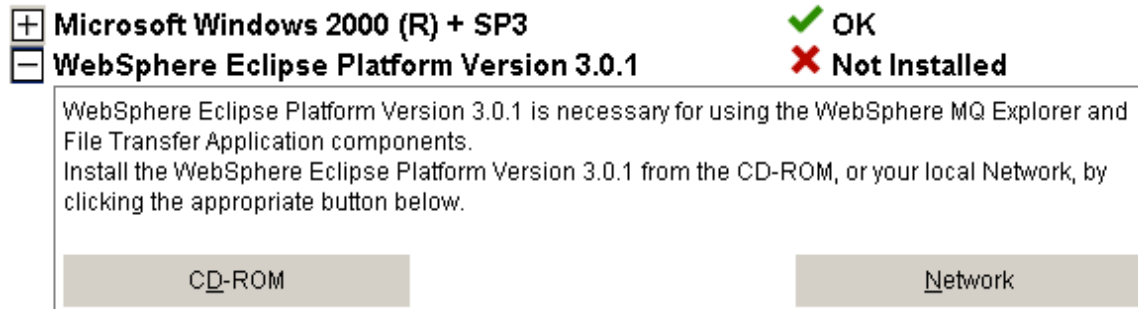


2. Click on **Software Requirements** in the navigation bar.

3. You should see a red **X** and the **Not Installed** message next to **WebSphere Eclipse Platform Version 3.0.1**.

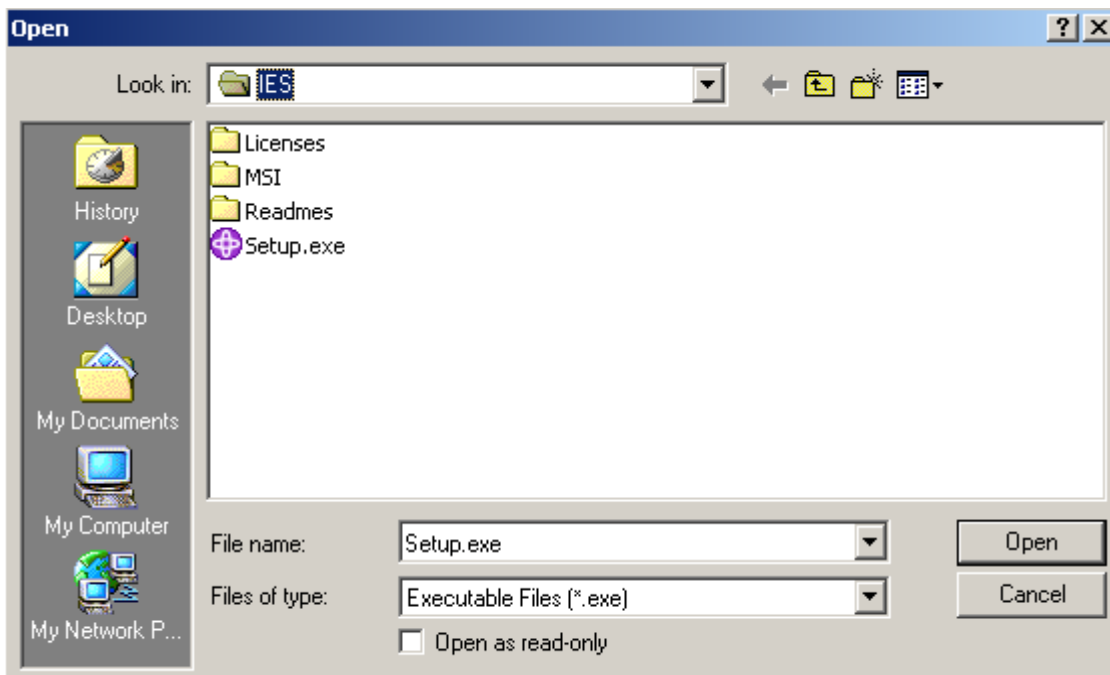
4. To install **WebSphere Eclipse Platform Version 3.0.1**, expand it by clicking on the **+** sign next to it.

__5. Click on the **Network** button.

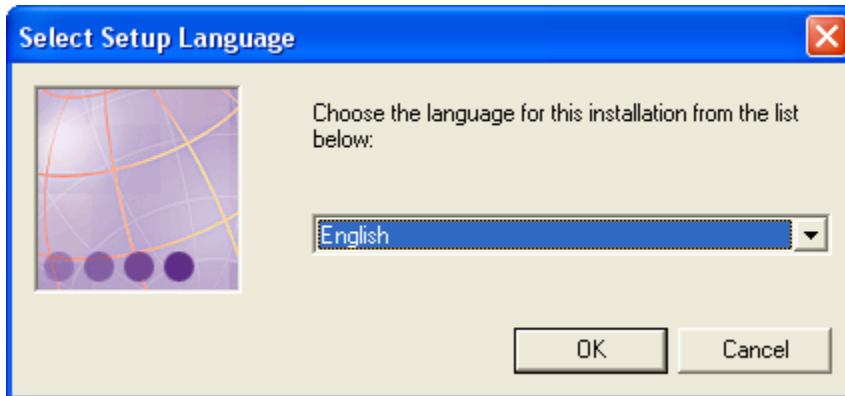


__6. A dialog will open looking for the **IES** folder which should be selected as shown below. Verify that the folder selected is under **C:\Software\WebSphere MQ v6.0 Trial\Prereqs\IES**.

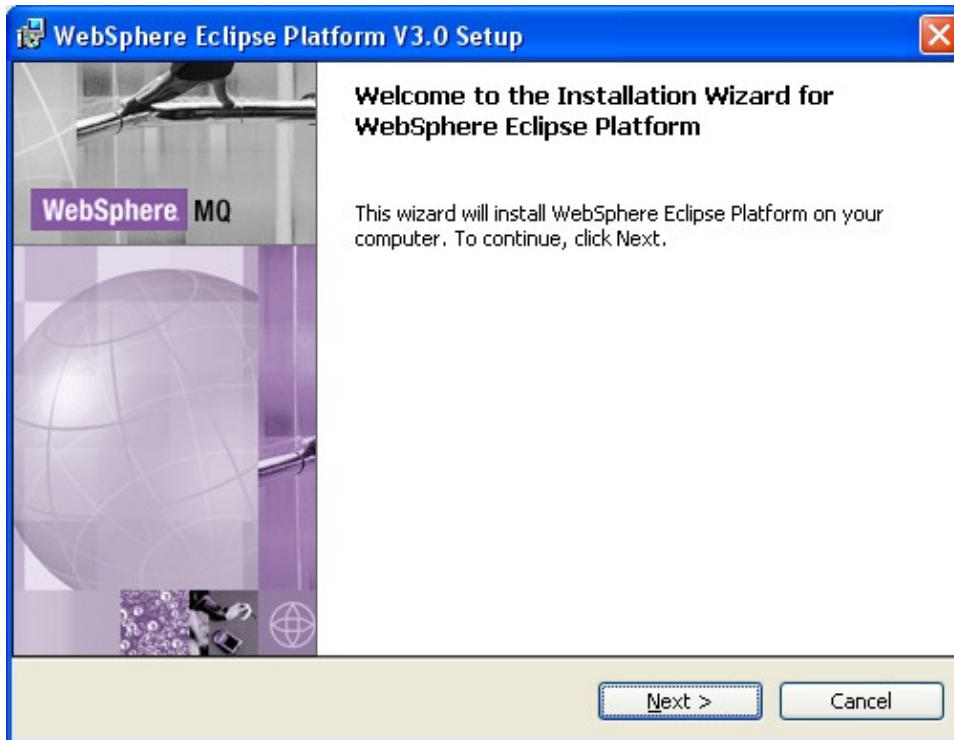
__7. Click **Open**.



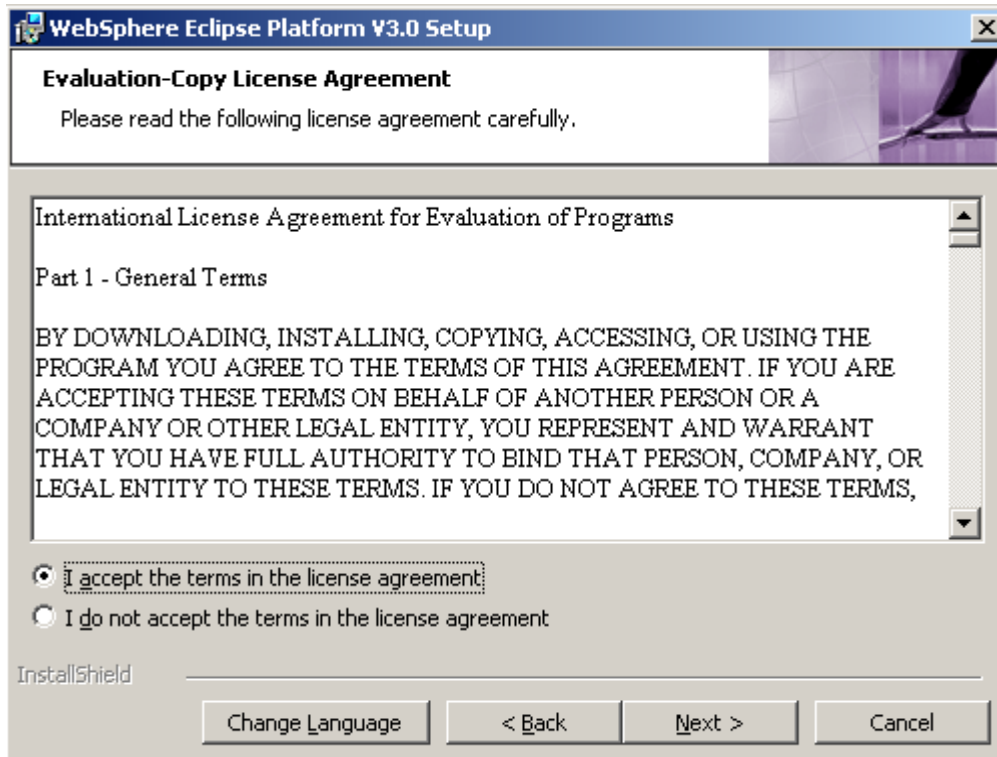
__8. Leave **English** selected in the **Select Setup Language** pop-up window and click **OK**.



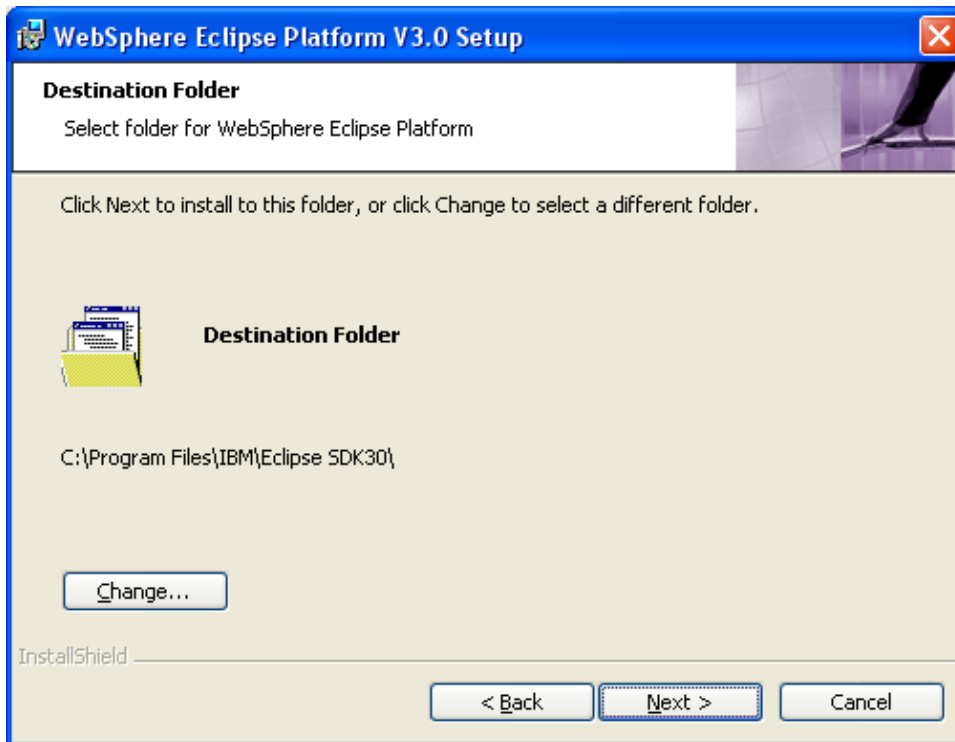
__9. Click **Next** in the **Welcome** window.



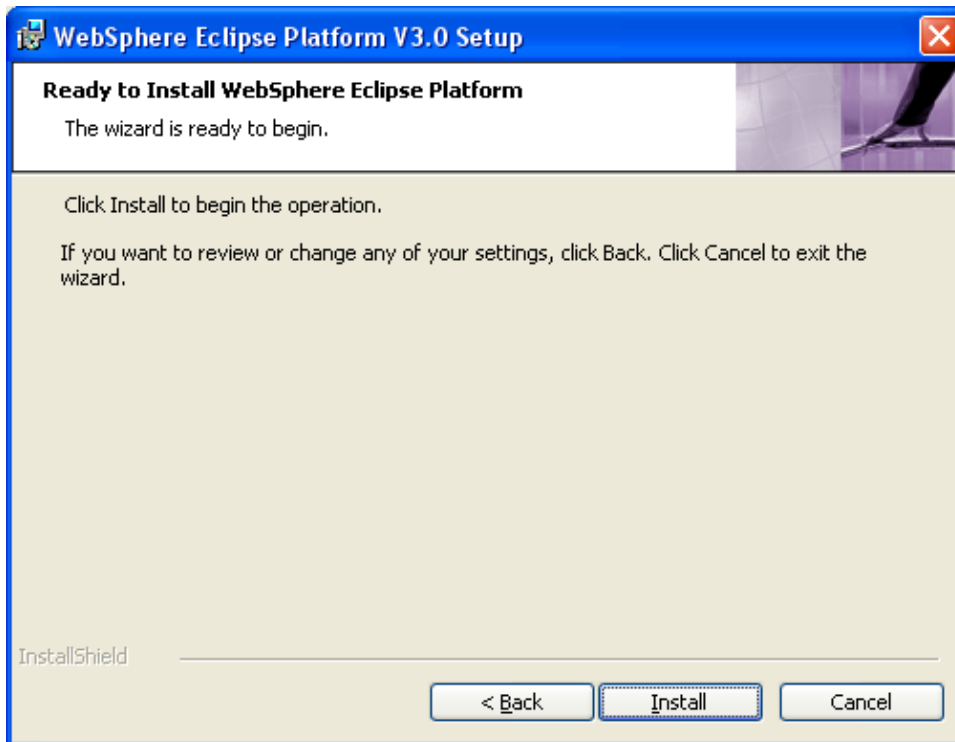
__10. Select **I accept the terms in the license agreement** and click **Next**.



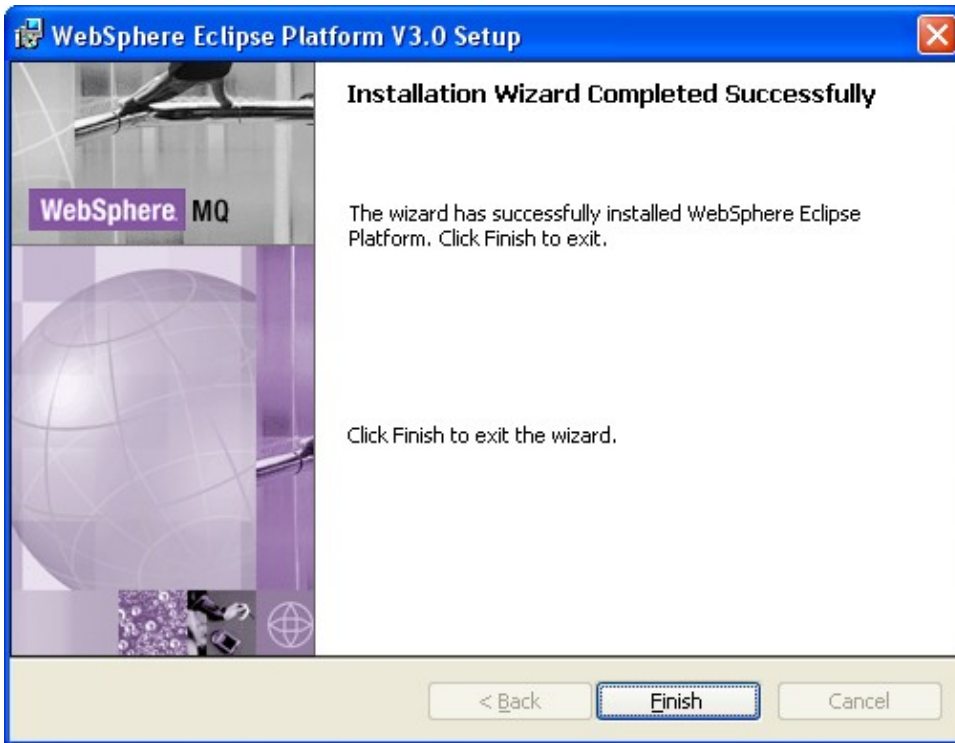
__11. Leave the default destination folder and click **Next**.



__12. In the **Ready to Install WebSphere Eclipse Platform** window just click **Install**.



__13. The installation will take a few minutes after which you will see the following screen. Click **Finish**.



__14. Now that you've installed the pre-requisite software for installing WebSphere MQ, the **WebSphere MQ Launchpad** should still be open, then click the **Refresh** button.

| | | |
|-------------------------------------|---|-----------------|
| <input checked="" type="checkbox"/> | Microsoft Windows 2000 (R) + SP3 | ✓ OK |
| <input type="checkbox"/> | WebSphere Eclipse Platform Version 3.0.1 | ✗ Not Installed |

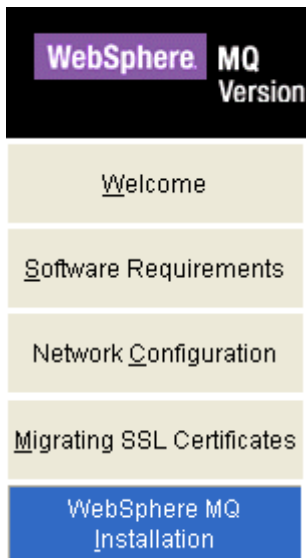
WebSphere Eclipse Platform Version 3.0.1 is necessary for using the WebSphere MQ Explorer and File Transfer Application components.
Install the WebSphere Eclipse Platform Version 3.0.1 from the CD-ROM, or your local Network, by clicking the appropriate button below.

Click on the Refresh button, if the status of the above items has changed.

__15. Now you should see a green check mark and the **OK** message next to **WebSphere Eclipse Platform Version 3.0.1** indicating that Eclipse has been successfully installed.

| | |
|------------------------------|---|
| Welcome | Software Requirements for WebSphere MQ on Windows XP |
| Software Requirements | The following software is required for a full install. If you are only installing selected components on this system, refer to the installation instructions for prerequisite software. |
| Network Configuration | Click on the plus (+) buttons below to expand the details on each item's status. |
| Migrating SSL Certificates | <input checked="" type="checkbox"/> Microsoft Windows XP (R) + SP1 ✓ OK |
| WebSphere MQ Installation | <input checked="" type="checkbox"/> WebSphere Eclipse Platform Version 3.0.1 ✓ OK |
| Quick Beginnings | Click on the Refresh button, if the status of the above items has changed. |
| Release Notes | <input type="button" value="Refresh"/> |
| Quick Tour | <input type="button" value="Exit Launchpad"/> |

__16. Now proceed to installing WebSphere MQ by clicking on **WebSphere MQ Installation** on the left menu.



__17. Click on the **Launch IBM WebSphere MQ Installer** button.

WebSphere MQ Version 6

WebSphere MQ Installation

Pre-Installation Status

Software Requirements:
All prerequisite software has been installed and is at the required level.

Network Configuration Steps:
WebSphere MQ requires this information in order to function correctly. Click on 'More Information' button in the Network Configuration panel to find out what to ask your domain administrator, or open the Quick Beginnings for more information.

SSL Certificate Migration Steps:
No preparatory actions are required.

Select installation language.

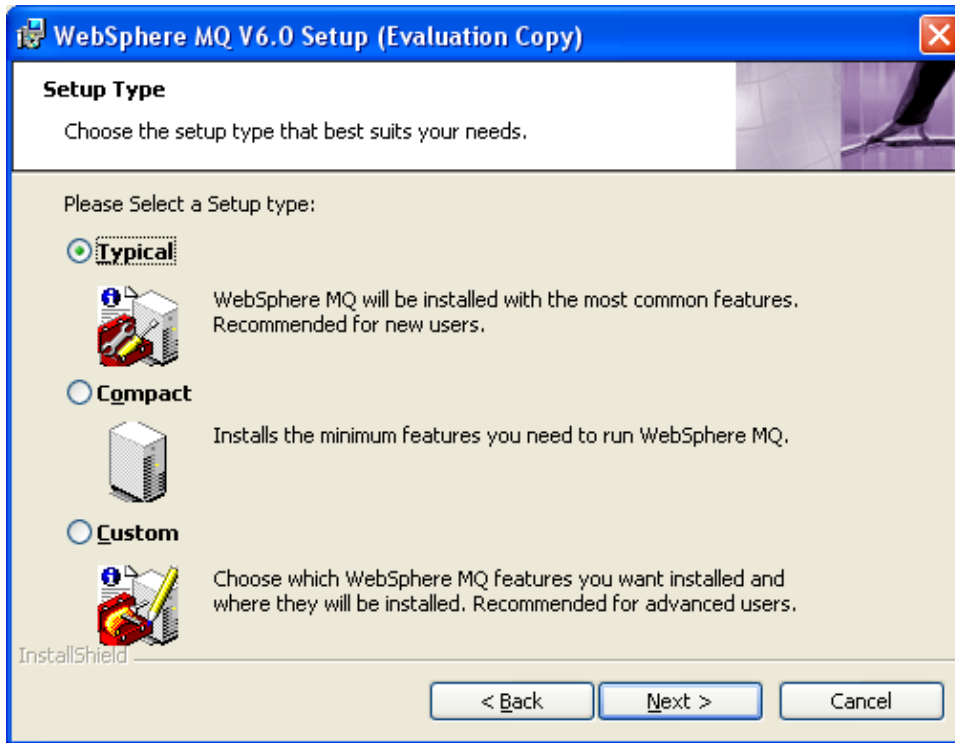
Launch IBM WebSphere MQ Installer

Exit Launchpad

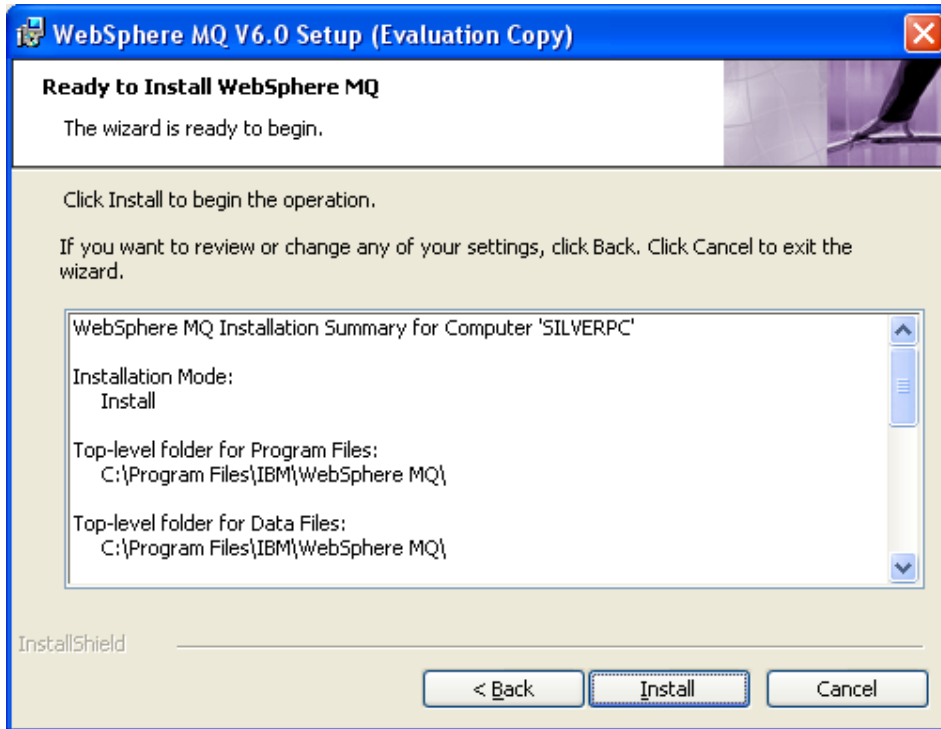
Navigation menu:
Welcome
Software Requirements
Network Configuration
Migrating SSL Certificates
WebSphere MQ Installation
Quick Beginnings
Release Notes
Quick Tour

__18. Select **I accept the terms in the the license agreement** and click **Next**.

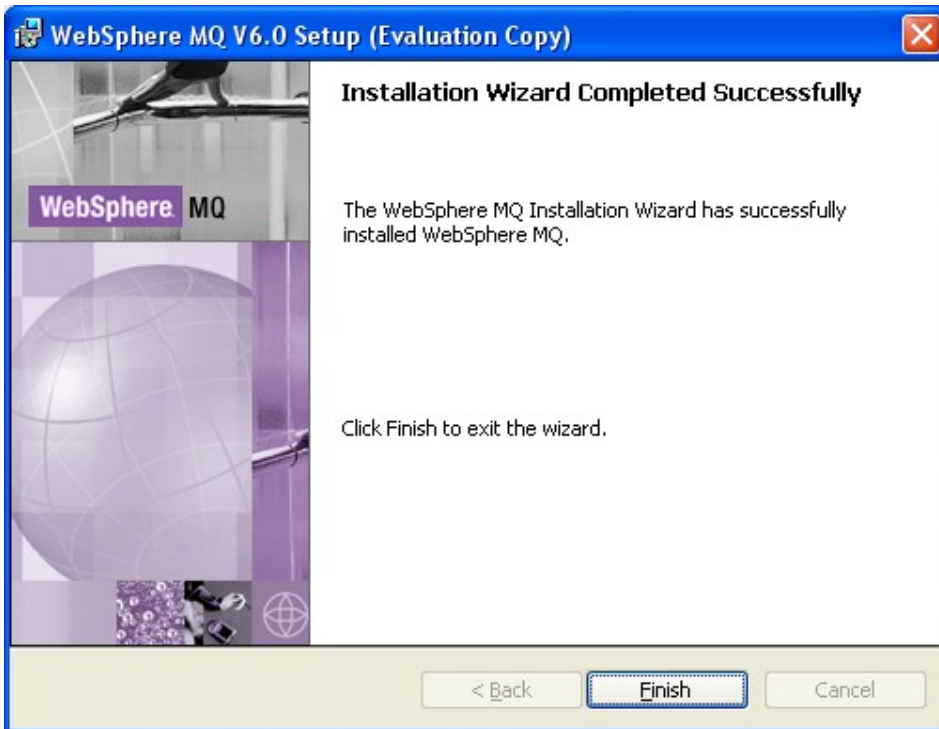
__19. Leave **Typical** selected and click **Next**.



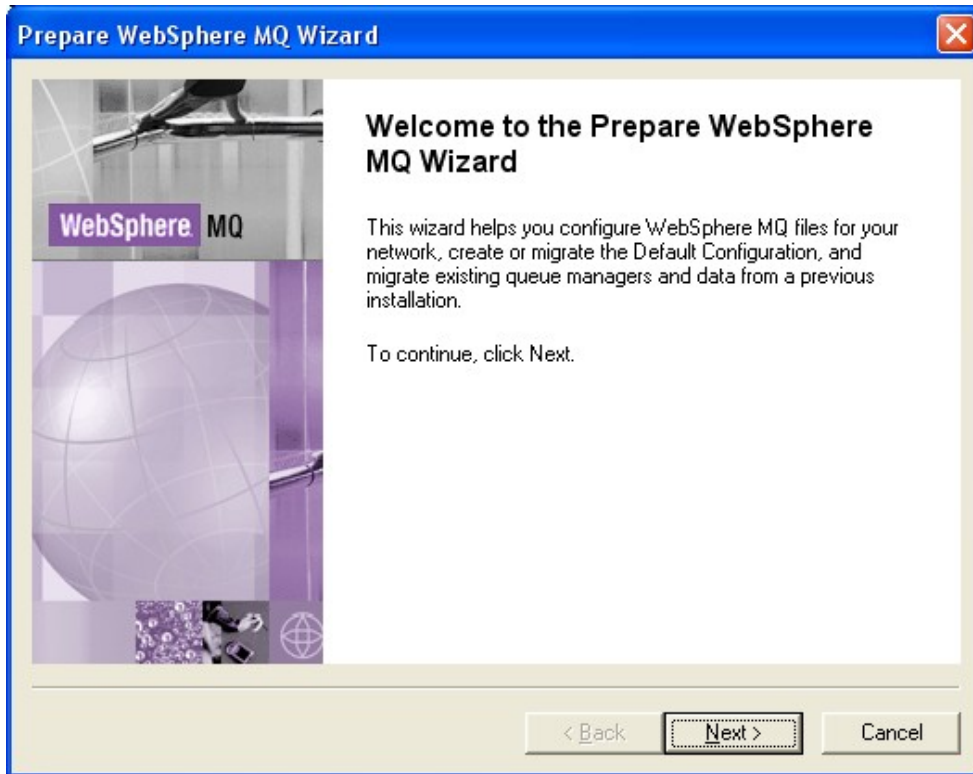
__20. Click **Install**.



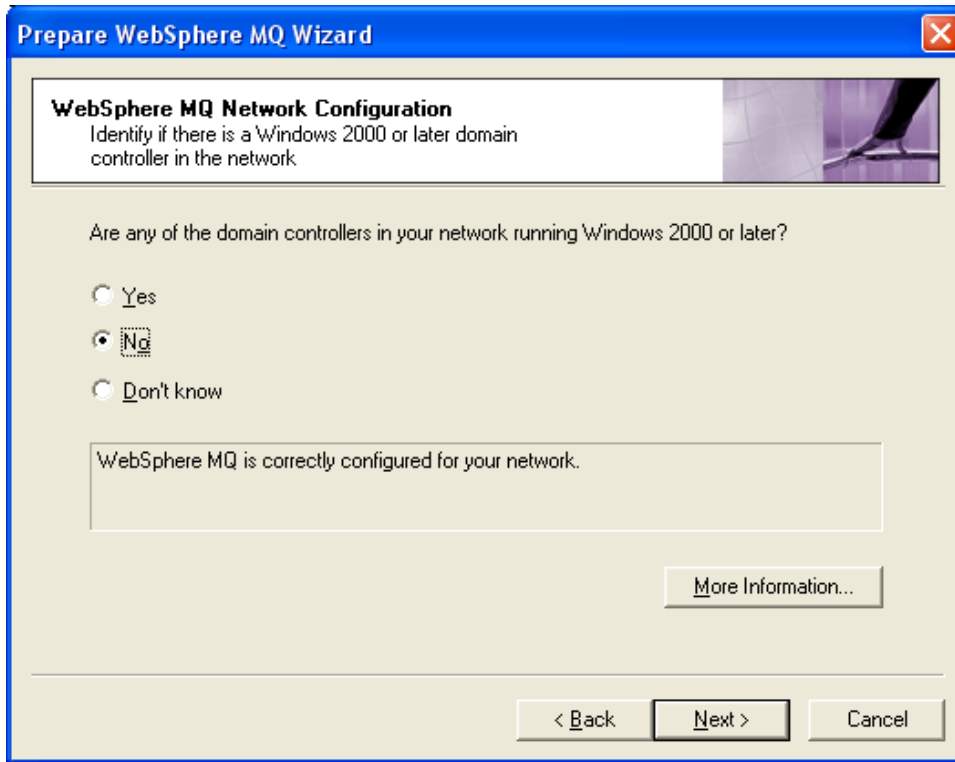
__21. The installation will take several minutes to complete after which you will see the following screen. Click **Finish**.



__22. The installation program will open up the **Welcome to the Prepare WebSphere MQ Wizard** window. Click **Next**.

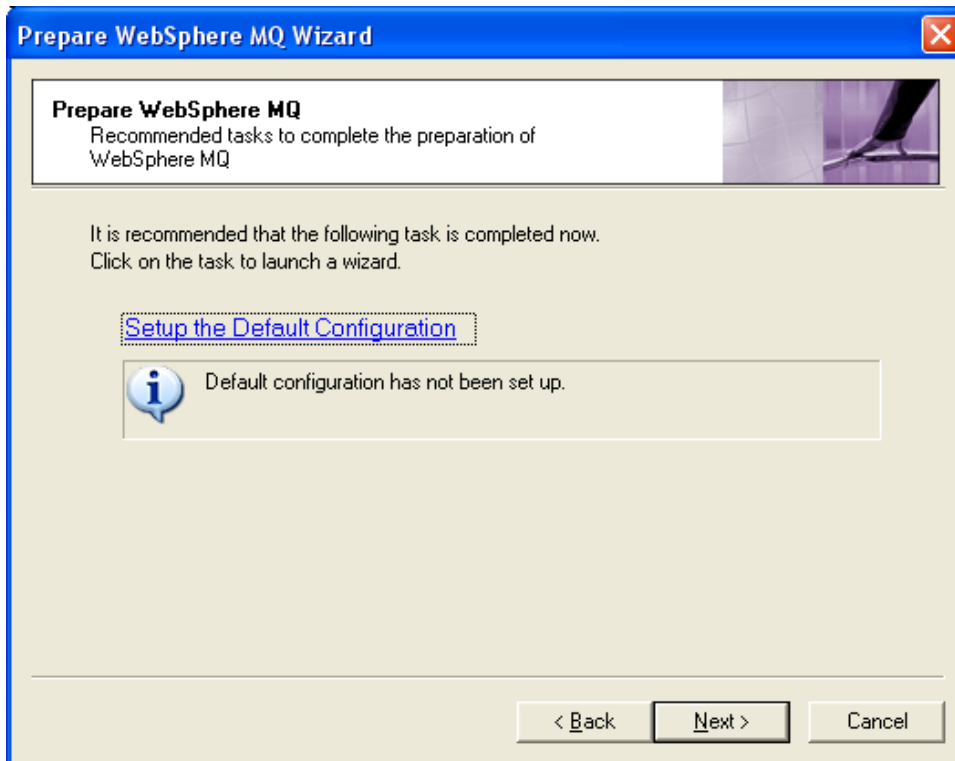


__23. Answer **No** to the question **Are any of the domain controllers in your network running Windows 2000 or later?**

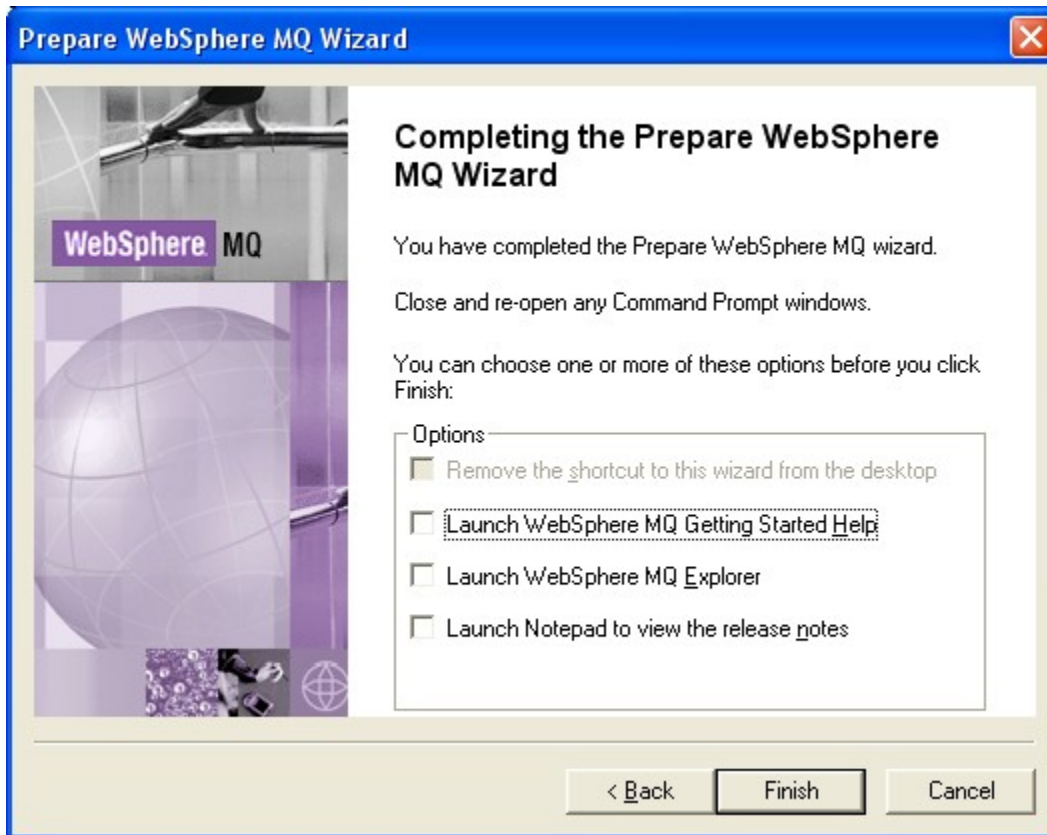


__24. Click **Next**.

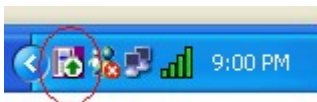
__25. Click **Next** again in this window.



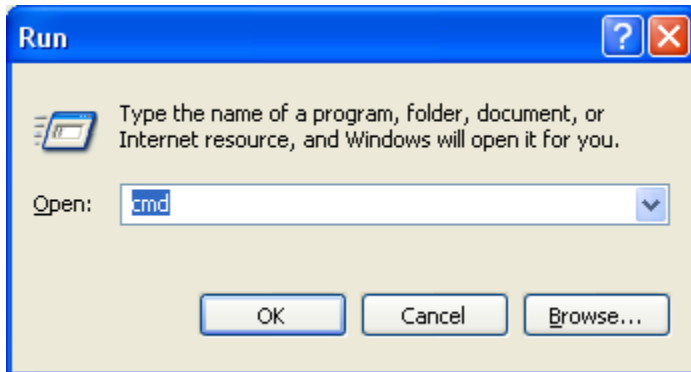
__26. Uncheck all the options and click **Finish**.



__27. You should see an icon in your system tray with a green icon which indicates that WebSphere MQ is running.



__28. To verify the installation was successful, open a command prompt by clicking on **Start -> Run**, enter **cmd** and click **OK**.



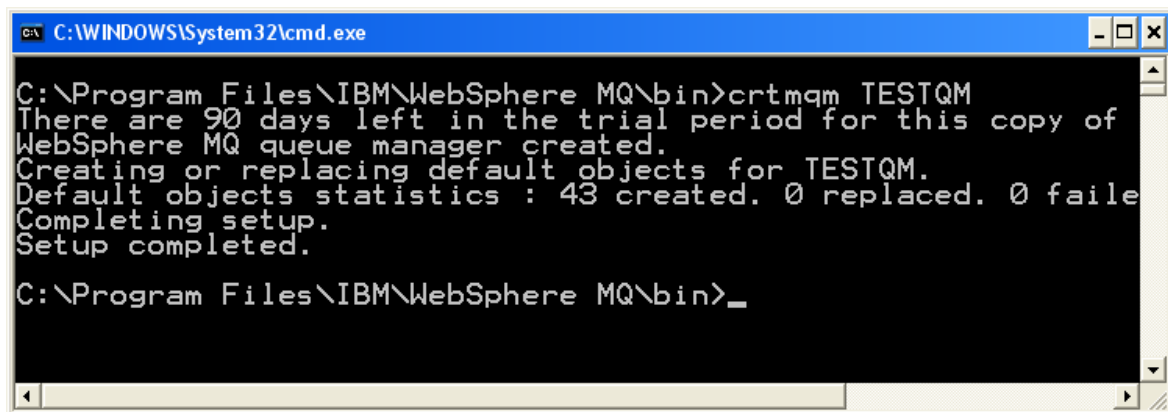
__29. Enter the following command to change to the WebSphere MQ directory:

cd C:\Program Files\IBM\WebSphere MQ\bin

__30. Enter The following command:

crtmqm TESTQM

__31. You should see the following message.



__32. Close the command prompt window.

__33. Restart the machine.

Note. It's very important to reboot the machine before starting the Labs.

You have successfully installed WebSphere MQ v6.0 Trial.