

**WA1797 WebSphere Enterprise Service Bus  
(ESB) 6.2 Programming Using WebSphere  
Integration Developer**

**Classroom Setup Guide**

**Web Age Solutions Inc.**

## Table of Contents

Part 1 - Minimum Hardware Requirements .....	3
Part 2 - Minimum Software Requirements .....	4
Part 3 - Software Provided.....	5
Part 4 - Important Ghosting or Imaging Information.....	6
Part 5 - Instructions.....	7
Part 6 - Installing WebSphere Integration Developer v6.2.....	8
Part 7 - Verification of the installation of WID 6.2.....	15

## **Part 1 - Minimum Hardware Requirements**

- 1000 Mhz Pentium III
- 1.5 GB RAM minimum, 2 GB recommended
- 10 GB free on the C drive
- Network connectivity to the internet
- USB Port

## **Part 2 - Minimum Software Requirements**

- Microsoft Windows 2000 SP4 or Windows XP (SP1 or SP2)
- Adobe Acrobat Reader 6.0
- Winzip 8
- Internet Explorer 6.0
- WebSphere Integration Developer 6.2\*

\* - indicates software provided as part of the courseware.

### **Part 3 - Software Provided**

Number of USB memory sticks that you will receive: **2**

Name of the files containing in the memory sticks (one file per memory stick):

- **WA1797\_1.ZIP**
- **WA1797\_2.ZIP**

All other software listed under Minimum Software Requirements is either commercially licensed software that you must provide or software that is freely available off the Internet.

## **Part 4 - Important Ghosting or Imaging Information**

Some of the software installed for this course will not function after changing the computer hostname. As such, cloning or imaging should not be used on a fully installed system.

You can save time by extracting the contents of the USB memory stick to C:\ on a clean OS install (no other software installed) and then imaging that hard drive. After restoring the image to the other computers and changing the hostnames, you can then install the software on each computer individually by following the instructions that are detailed later in this document.

## **Part 5 - Instructions**

\_\_1. From a USB memory stick, extract the **WA1797\_1.ZIP** file to **C:\**

\_\_2. From a USB memory stick, extract the **WA1797\_2.ZIP** file to **C:\**

\_\_3. Review that the following folders were created:

- **C:\LabFiles**
- **C:\Software\**
- **C:\Software\WID6.2**

## Part 6 - Installing WebSphere Integration Developer v6.2



**Warning: You cannot use ghosting or disk imaging to install this software. You must install the software on each machine separately. Do not change the computer hostname after this software is installed. Also, do not install this software from a network share. It will only function partially if you do.**

\_\_1. From C:\Software\WID6.2\disk1, run **launchpad.exe**



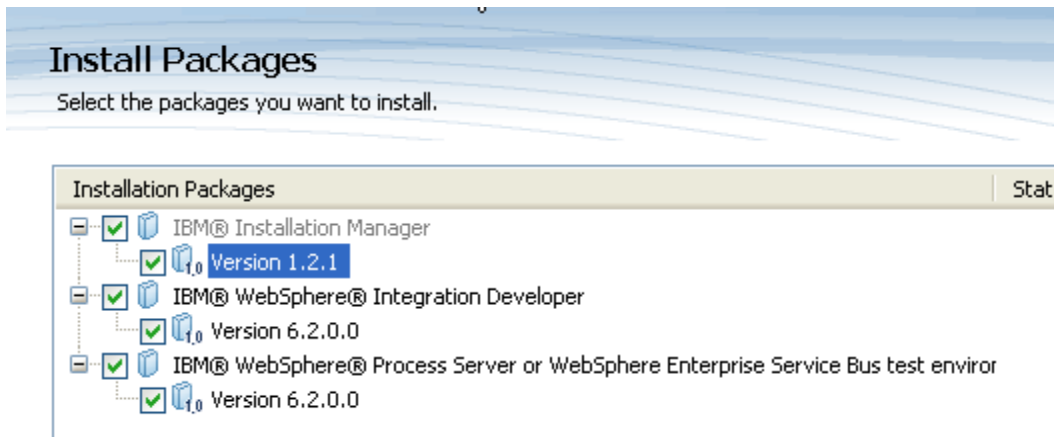
\_\_2. Select **English** and click **OK**.

The Software Development Platform page will open.



\_\_3. Click on **Install IBM WebSphere Integration Developer V6.2**

The Install Packages page will open.



\_\_4. Leave all the defaults selected as shown above and click **Next**.

\_\_5. Accept the license terms and click **Next**.

\_\_6. Leave the default directories for the Shared Resources and Installation Manager and click **Next**.

### Install Packages

Select a location for the shared resources directory and a location for Installation Manager.

Install Licenses **Location** Features Summary

When you install packages, files are stored in two locations:

- 1) The shared resources directory - resources that can be shared by multiple packages.
- 2) The installation directory - any resources that are unique to the package that you are installing.

Important: You can only select the shared resources directory the first time you install a package. The installation directory can be changed at any time. The shared resources directory must have adequate space for the shared resources of future packages.

Shared Resources Directory:

Once installed, IBM Installation Manager will be used to install, update, modify, manage and uninstall the packages.

Installation Manager Directory:

The Installation directory for WID will open.

\_\_7. Change the installation location to **C:\WID62**

### Install Packages

A package group is a location that contains one or more packages. Some packages can be installed into a common package group, existing package group, or create a new one.

Install Licenses **Location** Features Summary

Use the existing package group  
 Create a new package group

Package Group Name: IBM WebSphere Integration Developer

Installation Directory: C:\WID62


Package Group Name: IBM WebSphere Integration Developer

Installation Directory: C:\WID62

**Details**  
Shared Resources Directory: C:\Program Files\IBM\SDPShared

**Disk Space Information**

Volume	Available Space
C:	13.62 GB

 **Important: You must make this change. The default installation location is too long and will cause problems with the functionality of the product.**

- 8. Click **Next**.
- 9. Leave the default language and click **Next**.
- 10. The features to install page will open.
- 11. Expand the **IBM WebSphere Process Server or WebSphere Enterprise Service Bus test environment 6.2.0.0**

Features

- IBM® Installation Manager 1.2.1
- IBM® WebSphere® Integration Developer 6.2.0.0
- IBM® WebSphere® Process Server or WebSphere Enterprise Service Bus test environment 6.2.0.0**
- IBM WebSphere Process Server profile
- IBM WebSphere Enterprise Service Bus profile

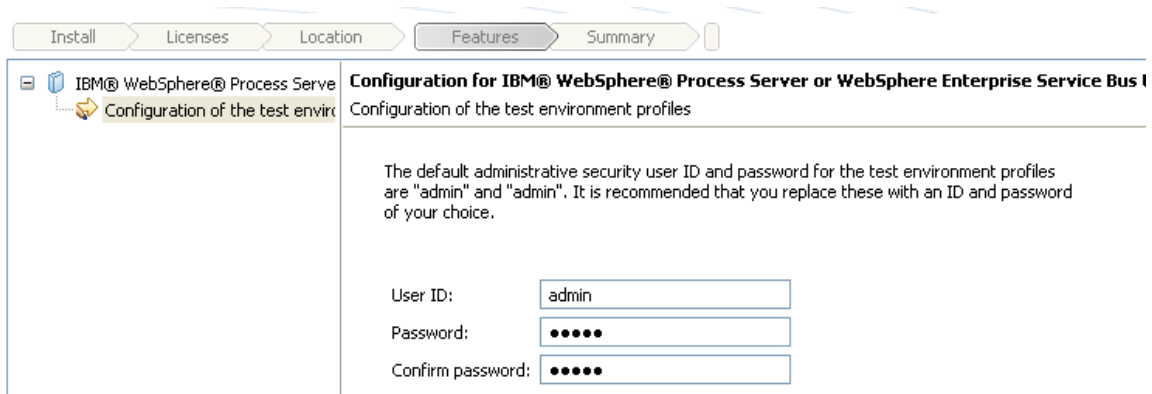
\_\_12. Uncheck **IBM WebSphere Process Server profile**.

\_\_13. Check **IBM WebSphere Enterprise Server Bus profile**.

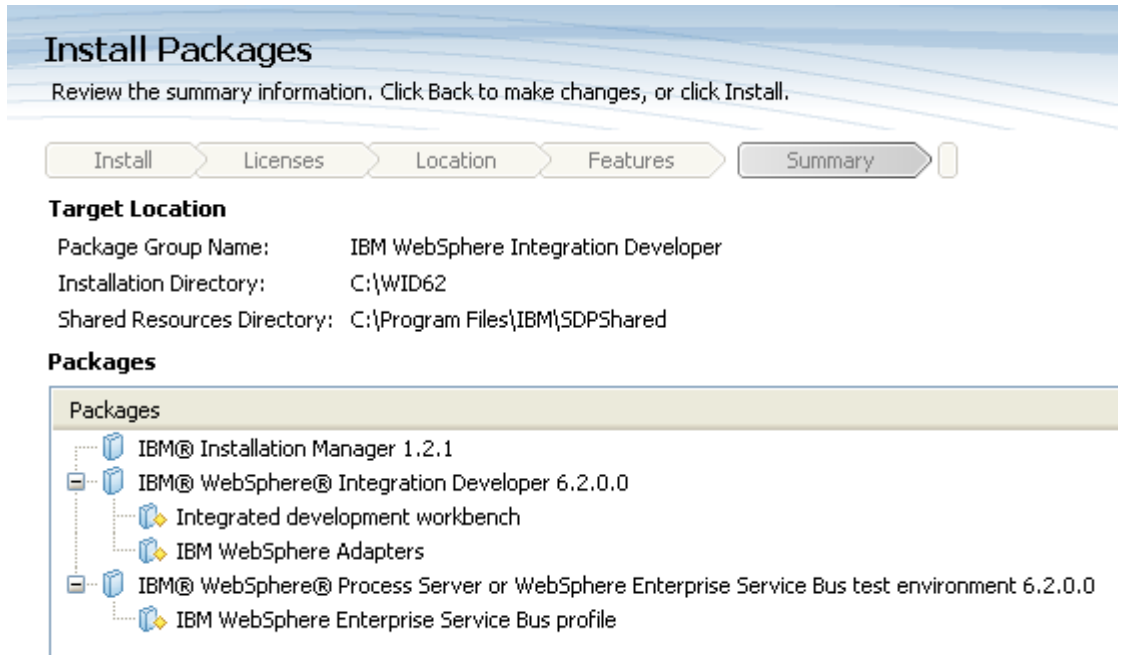


\_\_14. Verify you have the features selected as shown above and click **Next**.

\_\_15. Leave the User ID and Password as **admin** in the configuration of the Enterprise Service Bus page as shown below and click **Next**.



The Summary page will open.

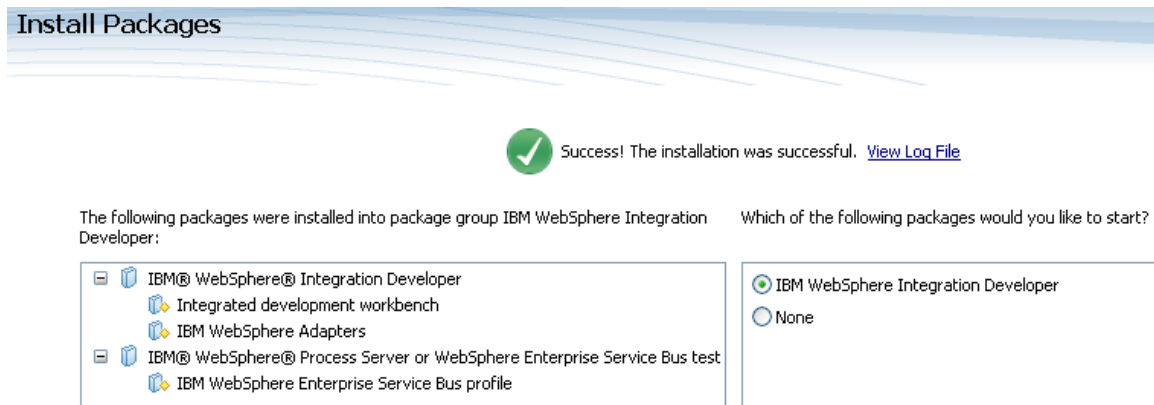


\_\_16. Click **Install**.

Installation will start.

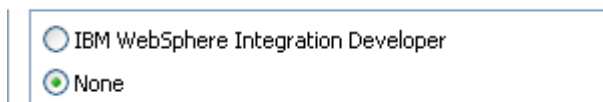


When the installation is done you will see this page:



\_\_17. Select **None**.

Which of the following packages would you like to start?



A screenshot of a software installation dialog box. The dialog box has a title bar and a question: "Which of the following packages would you like to start?". Below the question are two radio button options. The first option is "IBM WebSphere Integration Developer" with an unselected radio button. The second option is "None" with a selected radio button (indicated by a green dot).

\_\_18. Click **Finish**.

\_\_19. Close the Software Development Platform window.

## Part 7 - Verification of the installation of WID 6.2

\_\_1. Open C:\WID62\runtimes\bi\_v62\logs\install

\_\_2. Go to the end of the file. Make sure that you see the message: **INSTCONFSUCCESS** as shown below:

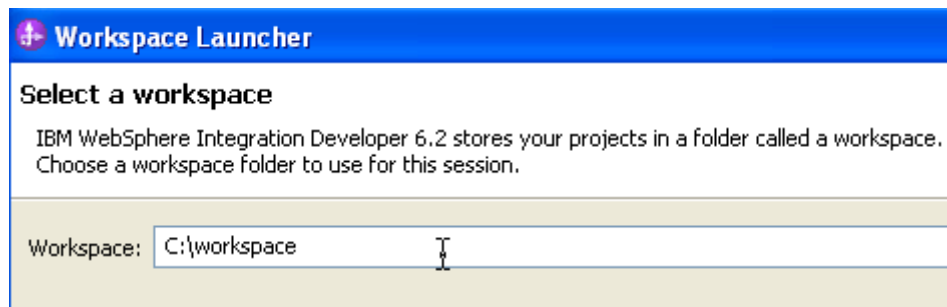
```
l.ni.ismp.actions.ConfigureAction, msg1, Running configuration command: 9/5/11  
l.ni.ismp.actions.SetLeniRegistryAction, msg1, Current install/uninstall  
l.ni.ismp.actions.SetExitCodeAction, msg1, CWUPI0000I: EXITCODE=0  
l.ni.ismp.actions.ISMPLogSuccessMessageAction, msg1, INSTCONFSUCCESS
```

\_\_3. Close the file.

\_\_4. Launch WID using the following Windows start menu: **Start->All programs->IBM WebSphere Integration Developer->IBM WebSphere Integration Developer V6.2->WebSphere Integration Developer V6.2**

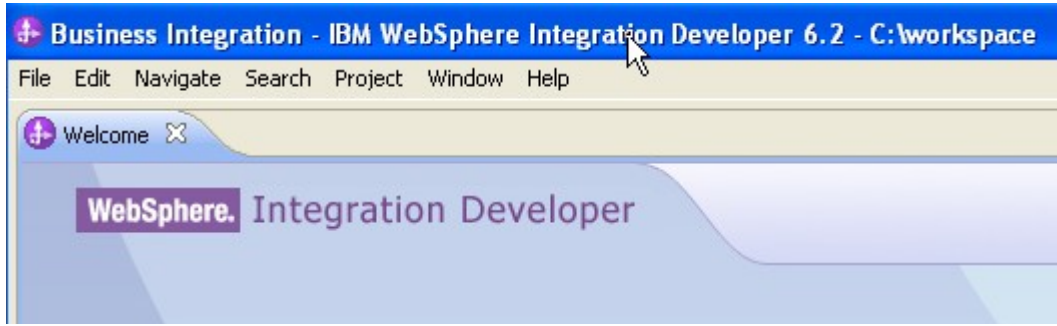


\_\_5. Change the workspace to C:\workspace as shown below.

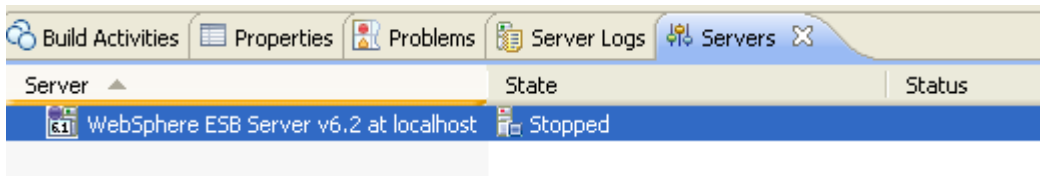


\_\_6. Click **OK**.

\_\_7. The Welcome window will open. Close it.

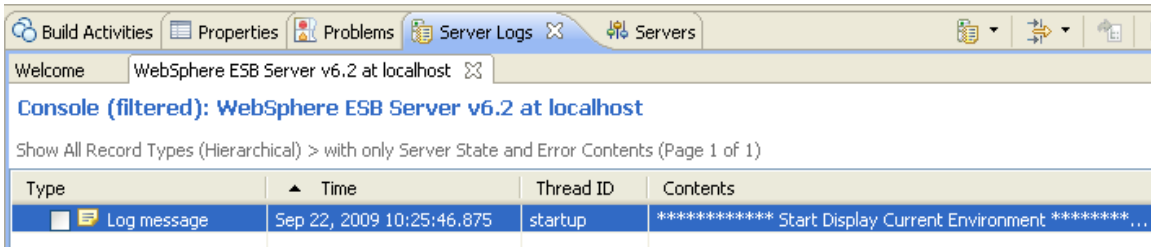


\_\_8. At the bottom of the screen, click on the **Servers** tab.

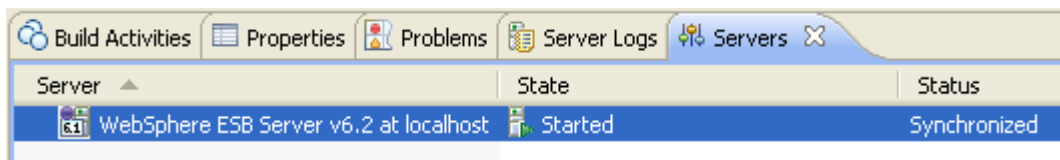


\_\_9. Right click the **WebSphere ESB Server v6.2 at localhost** and select **Start**.

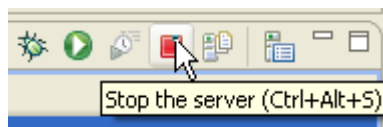
\_\_10. The Server Logs view will open showing some messages during the start.



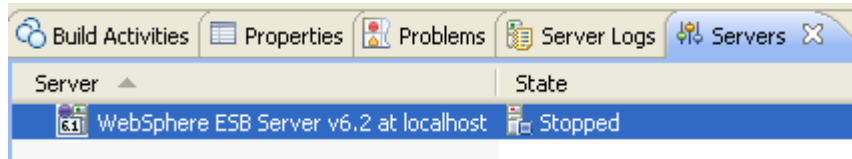
\_\_11. The Servers view will show the server as Started and status as Synchronized.



\_\_12. Select the server and stop it by clicking on the **Stop the server** button.



\_\_13. Wait for the server to stop at the end it will change to Stopped.



\_\_14. Exit WID by choosing **File->Exit** from the menu bar.

\_\_15. Close all the open files.

Congratulations! The product has installed successfully.

Congratulations. The installation of WA1797 WebSphere Enterprise Service Bus (ESB) 6.2 Programming Using WID 6.2 has been completed.