

# **WA1751 Fundamentals of WebSphere Business Modeler 6.2**

## **Classroom Setup Guide**

**Web Age Solutions Inc.**

## Table of Contents

Classroom Requirements.....	3
Part 1 - Minimum Hardware Requirements .....	3
Part 2 - Minimum Software Requirements .....	3
Part 3 - Software Provided.....	4
Part 4 - Important Ghosting or Imaging Information.....	4
Software Installation.....	5
Part 1 - Preparation.....	5
Part 2 - Installing WebSphere Business Modeler Advanced V6.2.....	6

## Classroom Requirements

### Part 1 - Minimum Hardware Requirements

- 1.4 GHz Pentium IV
- 1 GB RAM minimum (2 GB recommended)
- 8 GB in the hard disk
- USB port

### Part 2 - Minimum Software Requirements

- Windows XP with Service Pack 2 (or higher)
- Internet Explorer 6 (or higher) or Mozilla Firefox 2 (or higher)
- WebSphere Business Modeler Advanced 6.2 Trial\*

\* - indicates software provided as part of the courseware.

### **Part 3 - Software Provided**

Number of USB memory sticks that you will receive: **1**

Name of the files containing in the memory sticks (one file per memory stick):

- **WA1751.ZIP**

All other software listed under Minimum Software Requirements is either commercially licensed software that you must provide or software that is freely available off the Internet.

### **Part 4 - Important Ghosting or Imaging Information**

Some of the software installed for this course will not function after changing the computer hostname. As such, cloning or imaging should not be used on a fully installed system.

You can save time by extracting the contents of the USB memory stick to C:\ on a clean OS install (no other software installed) and then imaging that hard drive. After restoring the image to the other computers and changing the hostnames, you can then install the software on each computer individually by following the instructions that are detailed later in this document.

## Software Installation

### Part 1 - Preparation

\_\_1. Create a user called **wasadmin** with password **wasadmin** and grant this user administrative access.

\_\_2. Restart the computer and log in as **wasadmin**.

\_\_3. From a USB memory stick, extract the **WA1751.ZIP** file to **C:\**

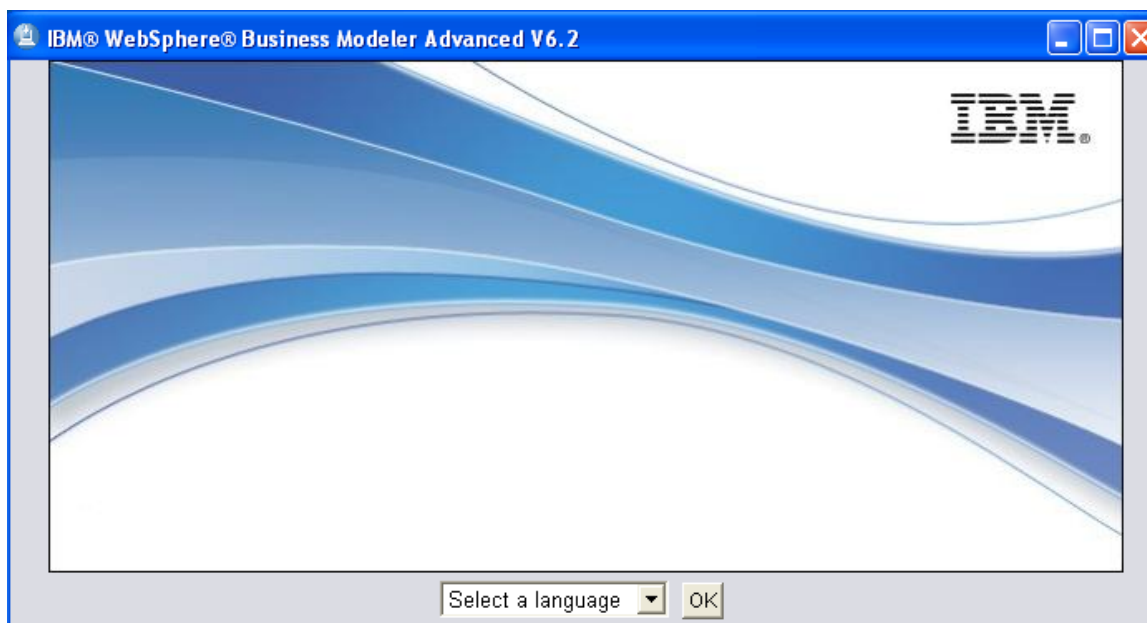
\_\_4. Review that the following folders were created:

· **C:\LabFiles**

· **C:\Software\WebSphere Business Modeler Advanced v6.2 Trial**

## Part 2 - Installing WebSphere Business Modeler Advanced V6.2

- \_\_1. Log in to Windows as a user having administrative rights.
- \_\_2. Navigate to the folder **C:\Software\WBM6.2Trial\disk1**.
- \_\_3. Double click on **launchpad.exe** to start the installation.
- \_\_4. Select **English** from the language drop-down and click **OK**.

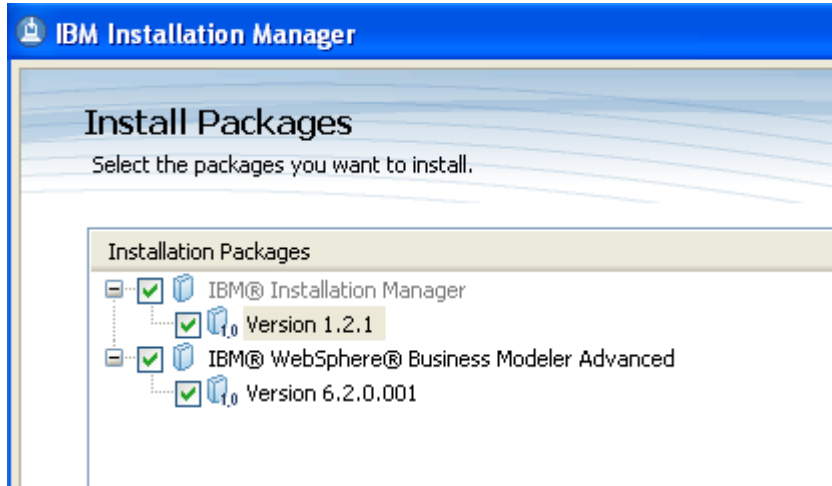


- \_\_5. Click **Install IBM® WebSphere® Business Modeler Advanced V6.2**.



The *IBM Installation Manager* will open.

- \_\_6. Leave all the **Installation Packages** selected and click **Next**.



\_\_7. Accept the license agreement and click **Next**.

\_\_8. Leave the default settings for **Shared Resources Directory** and **Installation Manager Directory** and click **Next**.

Shared Resources Directory:



Once installed, IBM Installation Manager will be used to install, update, modify,

Installation Manager Directory:

\_\_9. Leave the default setting for the **Installation Directory** and click **Next**.

Package Group Name: IBM WebSphere Business Modeler

Installation Directory:

**Details**

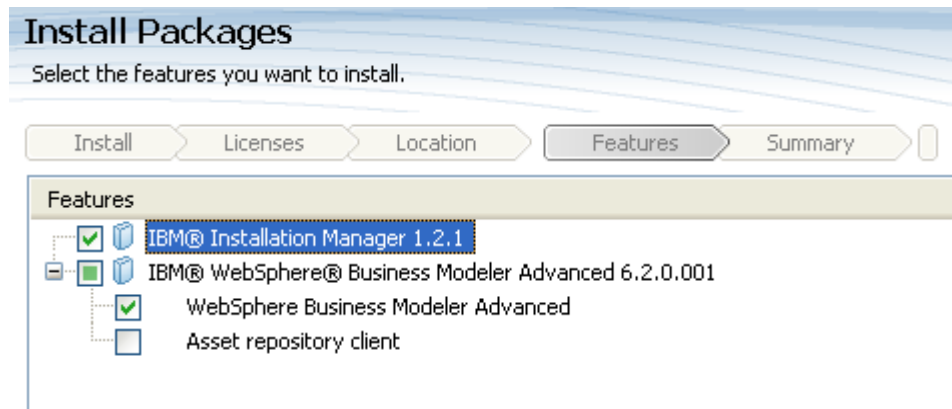
Shared Resources Directory: C:\Program Files\IBM\SDPShared

\_\_10. Accept **English** as the language and press **Next**.

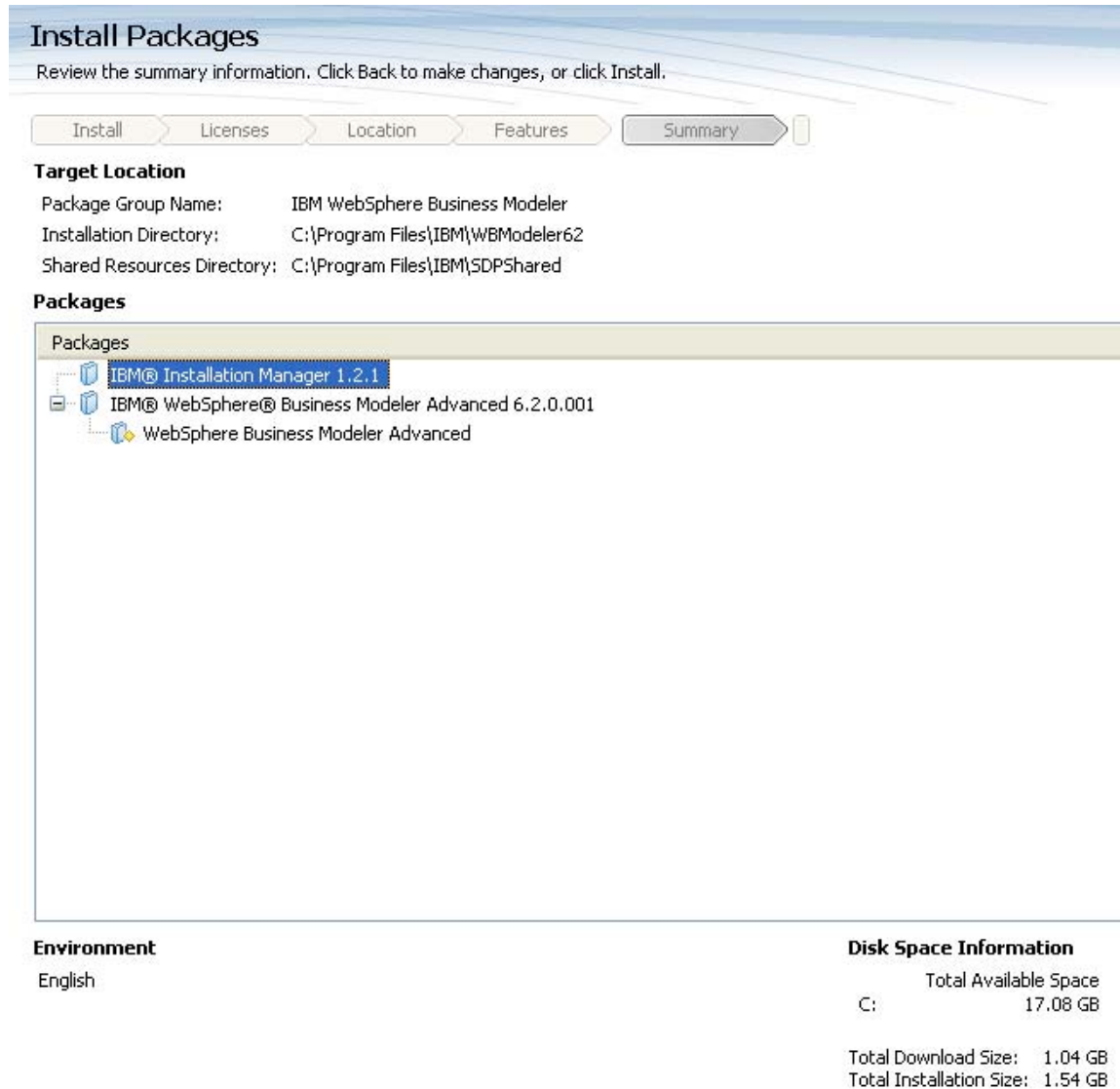
### Languages

<input checked="" type="checkbox"/> English	<input type="checkbox"/> Arabic
<input type="checkbox"/> German	<input type="checkbox"/> Greek
<input type="checkbox"/> Japanese	<input type="checkbox"/> Korean
<input type="checkbox"/> Spanish	<input type="checkbox"/> Traditional Chinese

\_\_11. Leave the default features to be installed selected and click **Next**.



\_\_12. In the summary page, click **Install**.



**Install Packages**  
Review the summary information. Click Back to make changes, or click Install.

Install Licenses Location Features **Summary**

**Target Location**  
Package Group Name: IBM WebSphere Business Modeler  
Installation Directory: C:\Program Files\IBM\WBModeler62  
Shared Resources Directory: C:\Program Files\IBM\SDPShared

**Packages**

- IBM@ Installation Manager 1.2.1
- IBM@ WebSphere@ Business Modeler Advanced 6.2.0.001
  - WebSphere Business Modeler Advanced

**Environment**  
English

**Disk Space Information**  
Total Available Space  
C: 17.08 GB  
Total Download Size: 1.04 GB  
Total Installation Size: 1.54 GB

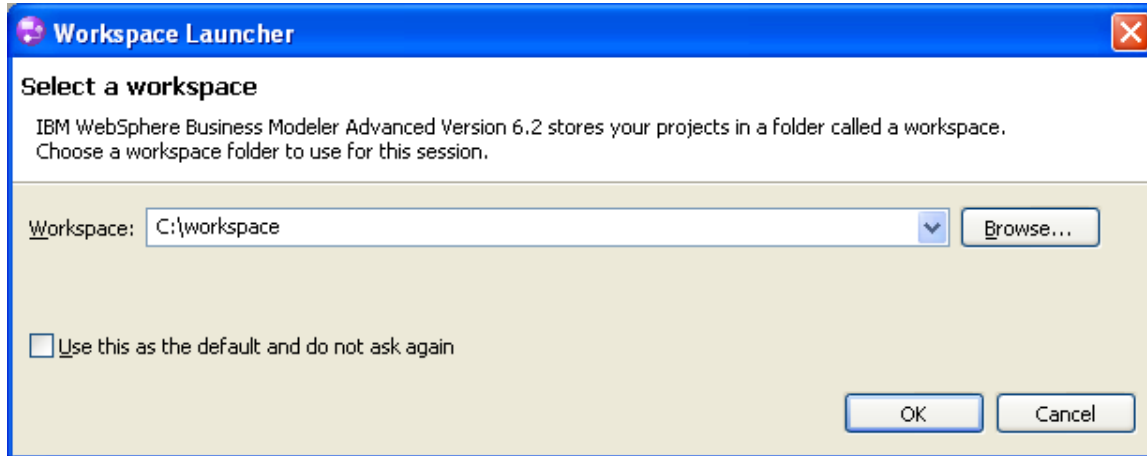
Eventually, the setup will finish.

\_\_13. Select **None** and click **Finish**.

## Installation Verification of WebSphere Business Modeler Advanced V6.2

\_\_1. Select **Start->All Programs->IBM WebSphere Business Modeler->IBM WebSphere Business Modeler Advanced 6.2->WebSphere Business Modeler Advanced 6.2**.

\_\_2. In the *Workspace Launcher*, change the workspace to **C:\workspace** and click **OK**.



WebSphere Business Modeler will start up.

\_\_3. In the *Features with Trial Licenses* dialog, click **Ignore**.



The **Welcome** page will be displayed.



\_\_4. Close WebSphere Business Modeler.