

**WA1796 Introduction to Java and Java  
Enterprise Using Rational Application  
Developer (RAD) v7.5**

**Classroom Setup Guide**

**Web Age Solutions Inc.**

## Table of Contents

Part 1 - Minimum Hardware Requirements .....	3
Part 2 - Minimum Software Requirements .....	3
Part 3 - Software Provided.....	3
Part 4 - Important Ghosting or Imaging Information.....	4
Part 5 - Preparation.....	4
Part 6 - Installing Rational Application Developer v7.5 Trial (RAD 7.5.4) .....	5
Part 7 - Verification of the installation of RAD 7.5.4.....	15

## **Part 1 - Minimum Hardware Requirements**

- 1000 Mhz Pentium III
- 1 GB RAM minimum, 2 GB recommended
- 10 GB free on the C drive
- Network connectivity to the internet
- USB Port

## **Part 2 - Minimum Software Requirements**

- Microsoft Windows 2000 SP4 or Windows XP (SP1 or SP2)
- Adobe Acrobat Reader 6.0
- Winzip 8
- Internet Explorer 6.0
- Mozilla Firefox 1.5 (or higher)
- Rational Application Developer V7.5.4 Trial\*

\* - indicates software provided as part of the courseware.

## **Part 3 - Software Provided**

You will receive in USB memory sticks, DVDs or links to download the following files:

- **WA1796\_1.ZIP**
- **WA1796\_2.ZIP**

All other software listed under Minimum Software Requirements is either commercially licensed software that you must provide or software that is freely available off the Internet.

## Part 4 - Important Ghosting or Imaging Information

Some of the software installed for this course will not function after changing the computer hostname. As such, cloning or imaging should not be used on a fully installed system.

You can save time by extracting the contents of the USB memory stick to C:\ on a clean OS install (no other software installed) and then imaging that hard drive. After restoring the image to the other computers and changing the hostnames, you can then install the software on each computer individually by following the instructions that are detailed later in this document.

## Part 5 - Preparation

\_\_1. Using the files that you received in part 3 extract the **WA1796\_1.ZIP** file to C:\

\_\_2. Using the files that you received in part 3 extract the **WA1796\_2.ZIP** file to C:\

\_\_3. Review that the following folders were created:

- **C:\LabFiles**
- **C:\Software\RAD**
- **C:\Software\RAD\_SETUP**
- **C:\Software\WAS70**

## Part 6 - Installing Rational Application Developer v7.5 Trial (RAD 7.5.4)

Installing RAD 7.5.4 involves two basic steps: installing the IBM *Installation Manager* and then installing *RAD 7.5.4* itself. This document will outline all these steps.

*Average time for installation of RAD 7.5.4 Trial: 60 minutes.*

\_\_1. Before you begin, please shut down any running applications. The installation process is quite CPU/disk intensive.

\_\_2. From **C:\Software\RAD\_SETUP**, run **launchpad.exe**. The installer will begin.

\_\_3. Select **English** as the language and click **OK**.



\_\_4. Click **Install IBM Rational Application Developer for WebSphere Software**.

A new program – the **IBM Installation Manager** will launch. You will then be prompted to *Install Packages*.



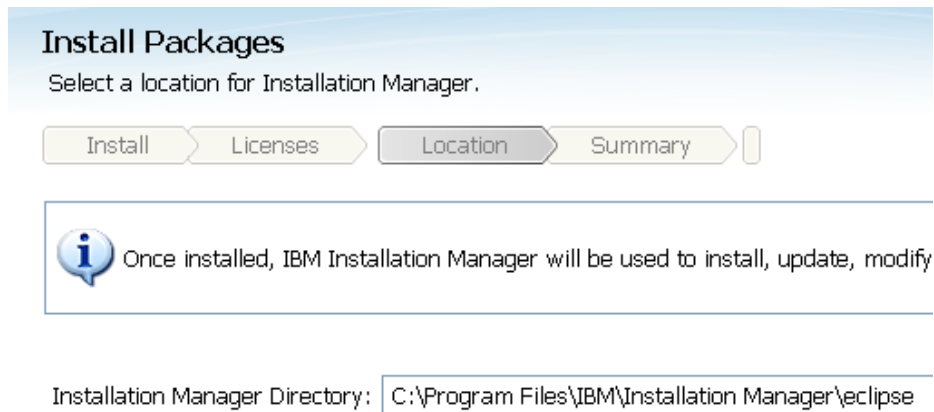
\_\_5. Make sure both **IBM Installation Manager** and **Version 1.3.2** are selected and click **Next**.

The *License Agreement* screen will appear.



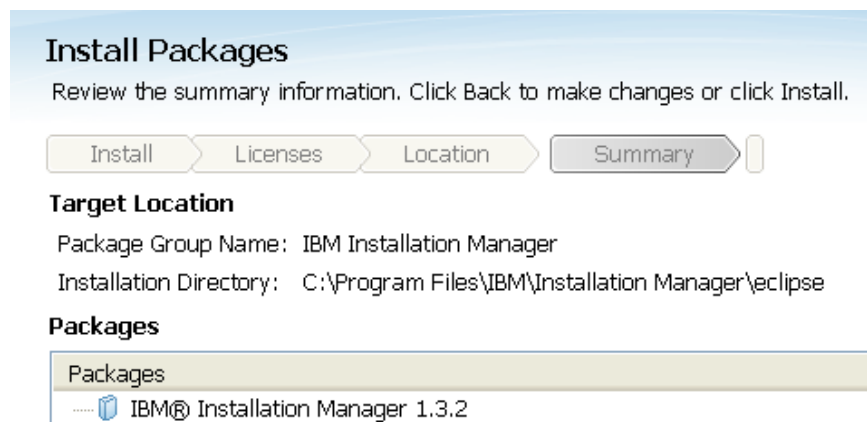
\_\_6. At the bottom of the screen, select **I accept the terms in the license agreements** and click **Next**.

You will be asked to select a location for the Installation Manager.



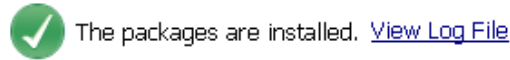
\_\_7. Leave the default *Installation Manager Directory* and click **Next**.

You will be asked to review summary information.



\_\_8. Click **Install**.

The *Installation Manager* will install. Eventually, it will complete.



The following package was installed into package group IBM Installation Manager:

 IBM® Installation Manager

\_\_9. Click **Restart Installation Manager**.

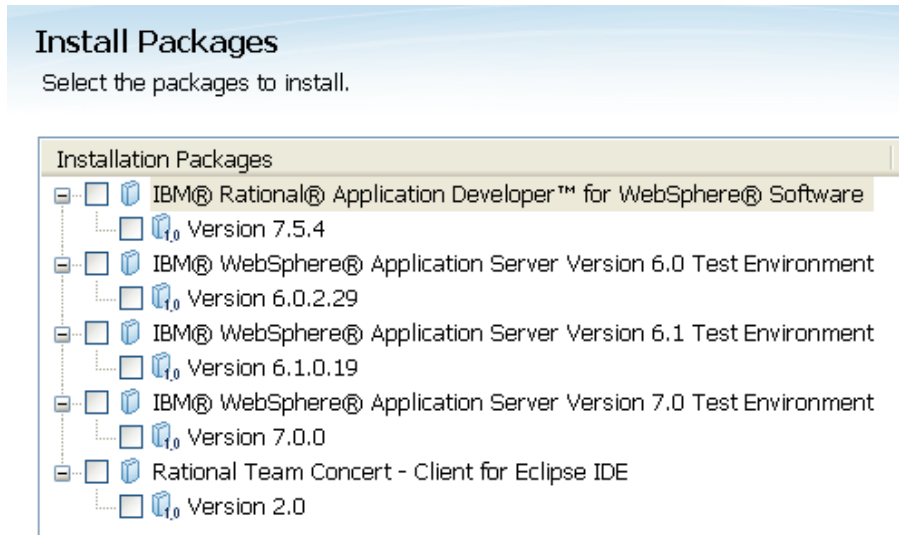
The **Installation Manager** will re-launch.



\_\_10. Click **Install**.

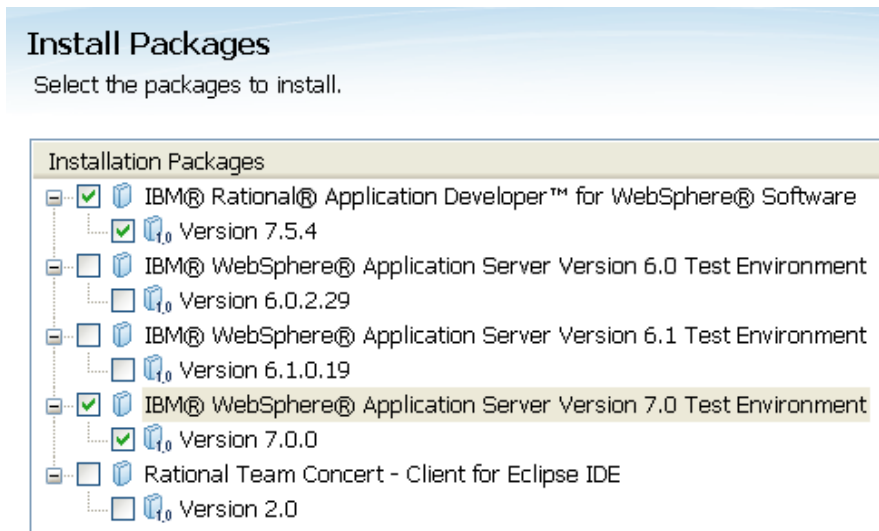
**Note:** At this point, you *may* be told that a new version of IBM Installation Manager is available. Click **Yes** if this screen appears. The Installation Manager will then connect to the Internet and run a quick update. At the end of the update procedure, you will be asked to restart the Install Manager. Simply click **OK**. The Installation Manager will appear again. You may need to switch between windows. Click **Install** again.

The *Install Packages* screen will appear.



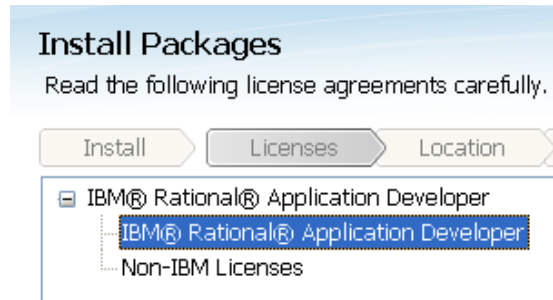
\_\_11. Select the following packages:

- **IBM Rational Application Developer** for WebSphere Software
- **IBM WebSphere Application Server Version 7.0 Test Environment**



\_\_12. Make sure your selection looks like above and click **Next**.

The *License Agreement* will appear.



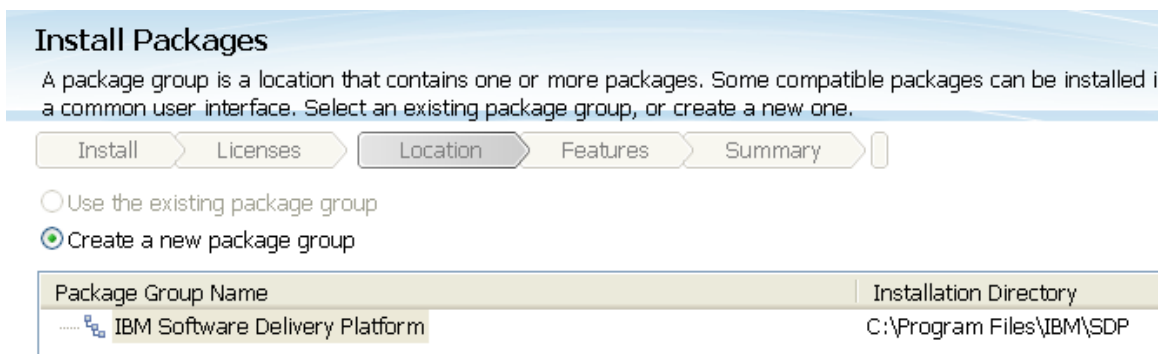
\_\_13. At the bottom of the page, click **I accept the terms in the license agreements** and click **Next**.

You will be asked to select a location for the shared resources directory:



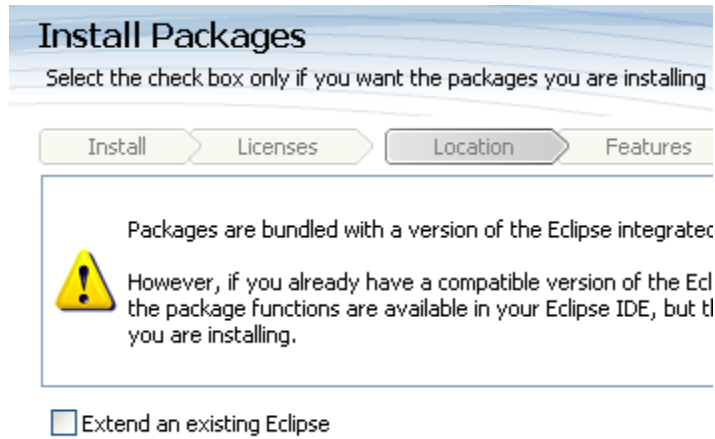
\_\_14. Leave the default *Shared Resources Directory* and click **Next**.

You will be asked to select a directory for the IBM Software Delivery Platform.



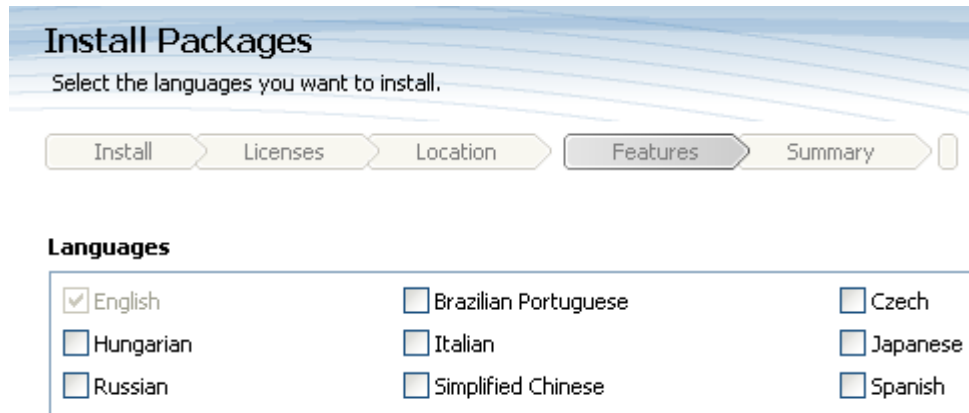
\_\_15. Leave the default *Installation Directory* and click **Next**.

You will be asked if you would like to extend an existing version of Eclipse.



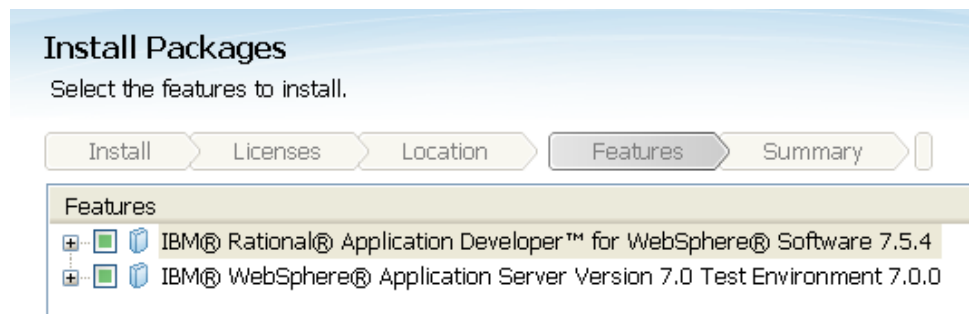
\_\_16. Do not select anything and simply click **Next**.

The Languages page will open.



\_\_17. Leave **English** selected and click **Next**.

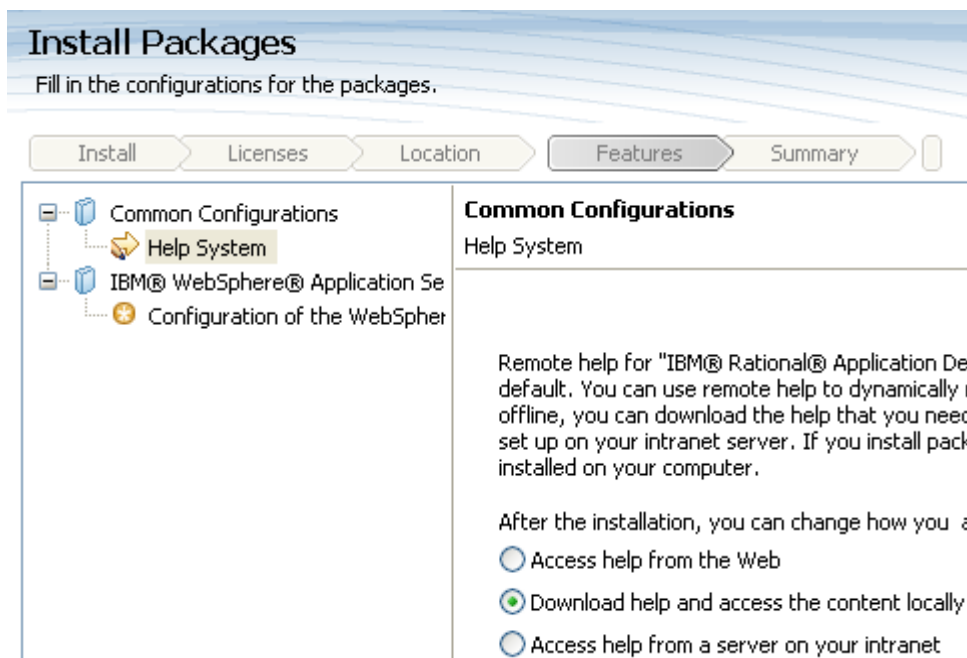
You will be asked to select the features to be installed.



\_\_18. Accept the defaults and simply click **Next**.

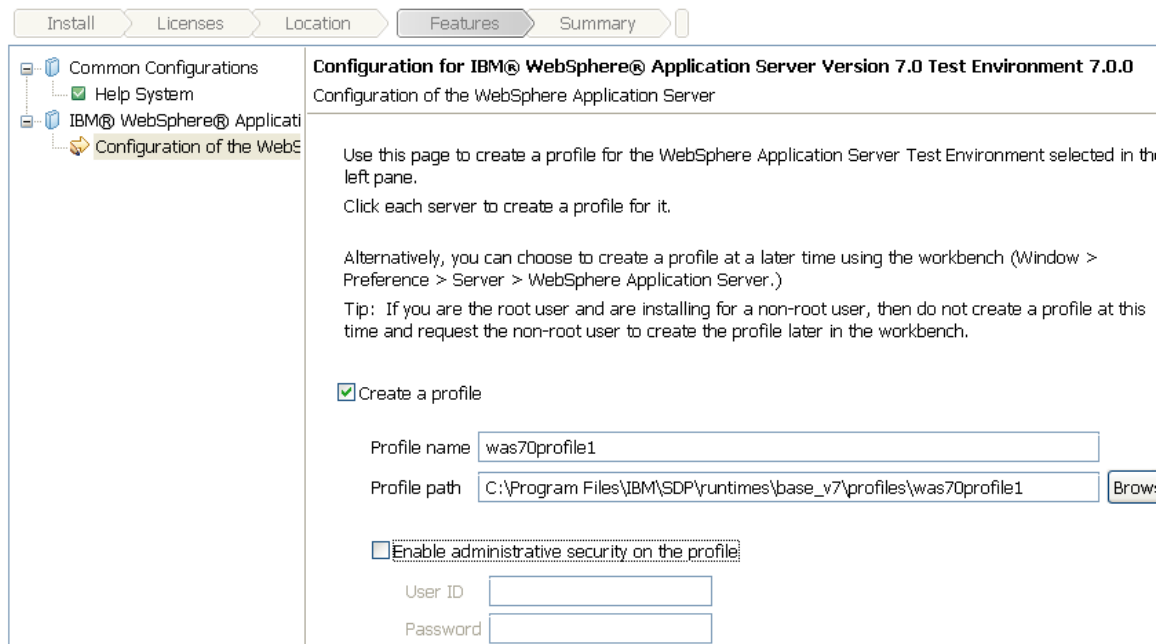
The Common configuration page will open.

\_\_19. For the option for the *Help System* select **Download help and access the content locally**.



\_\_20. Click **Next**.

\_\_21. In the configuration page for WebSphere Application Server un-check the **Enable administrative security on the profile** check option and leave the **Create a profile** check option selected.



22. Click **Next**.

The Summary Information will appear.

## Install Packages

Review the summary information. Click Back to make changes or click Install.

Install

Licenses

Location

Features

Summary

### Target Location

Package Group Name: IBM Software Delivery Platform  
Installation Directory: C:\Program Files\IBM\SDP  
Shared Resources Directory: C:\Program Files\IBM\SDPShared


### Packages



\_\_23. Click **Install** and the installation will begin.

This may take some time (up to one hour on slower machines), so be patient.

Eventually, installation will complete.

 The packages are installed. [View Log File](#)

The following packages were installed into package group IBM Software Delivery Platform: Which package do you want to start?

<ul style="list-style-type: none"><li><input type="checkbox"/> IBM® Rational® Application Developer™ for WebSphere® Software<ul style="list-style-type: none"><li><input type="checkbox"/> Web Development Tools<ul style="list-style-type: none"><li><input type="checkbox"/> Web Development Tools</li><li><input type="checkbox"/> Crystal Reports tools</li></ul></li><li><input type="checkbox"/> Java EE and Web services development tools</li></ul></li></ul>	<ul style="list-style-type: none"><li><input checked="" type="radio"/> IBM® Rational® Application Developer</li><li><input type="radio"/> None</li></ul>
---	--

\_\_24. Check **None**.

<ul style="list-style-type: none"><li><input type="radio"/> IBM® Rational® Application Developer</li><li><input checked="" type="radio"/> None</li></ul>
--

\_\_25. Click **Finish**.

\_\_26. Close all open windows.

## Part 7 - Verification of the installation of RAD 7.5.4

\_\_1. Open the following file:

```
C:\Program Files\IBM\SDP\runtimes\base_v7\logs\install\log.txt
```

\_\_2. Look at the end of the file for the message:

```
panning.InstallNIFMaintenanceMediaSpanning, msg1, Running configuration command: C
panning.InstallNIFMaintenanceMediaSpanning, msg1, Current install/uninstall proces
s.SettleNIFRegistryAction, msg1, Current install/uninstall process is successful.
s.SetExitCodeAction, msg1, CWUPI0000I: EXITCODE=0
s.ISMPLogSuccessMessageAction, msg1, INSTCONFSUCCESS
```

If you see the message INSTCONFSUCCESS, it means that WebSphere Application Server was installed properly.

\_\_3. Open the following file:

```
C:\Program Files\IBM\SDP
\runtimes\base_v7\logs\manageprofiles\was70profile1_create.log
```

\_\_4. Look at the end of the file for the message:

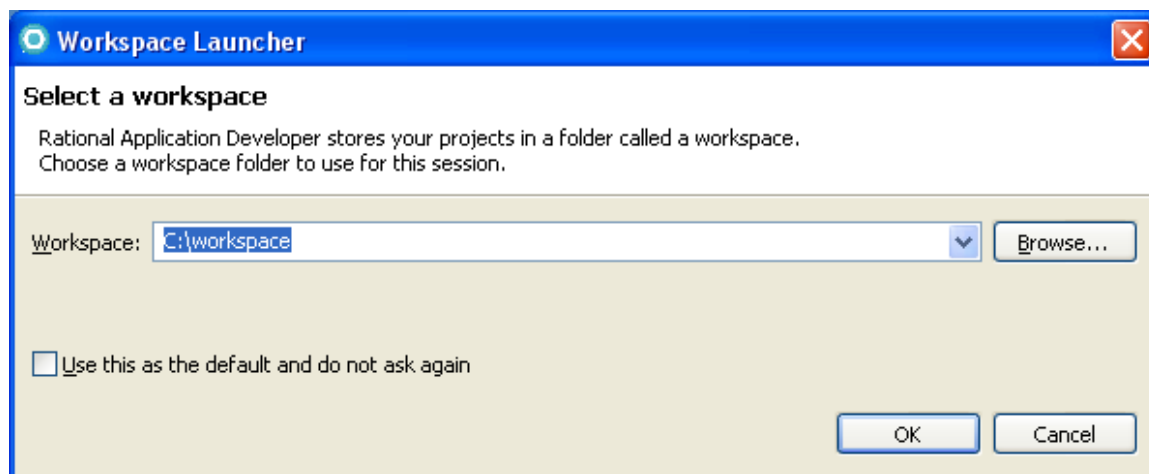
```
<record>
  <date>Feb 4, 2011 11:23:25 AM</date>
  <millis>1296836605859</millis>
  <sequence>4497</sequence>
  <logger>com.ibm.wsspi.profile.wSPprofileCLI</logger>
  <level>INFO</level>
  <class>com.ibm.wsspi.profile.wSPprofileCLI</class>
  <method>invokeWSPprofile</method>
  <thread>0</thread>
  <message>Returning with return code: INSTCONFSUCCESS</message>
</record>
</log>
```

If you see the message INSTCONFSUCCESS, it means that the WebSphere Application Server profile was created correctly.

\_\_5. Close all open files.

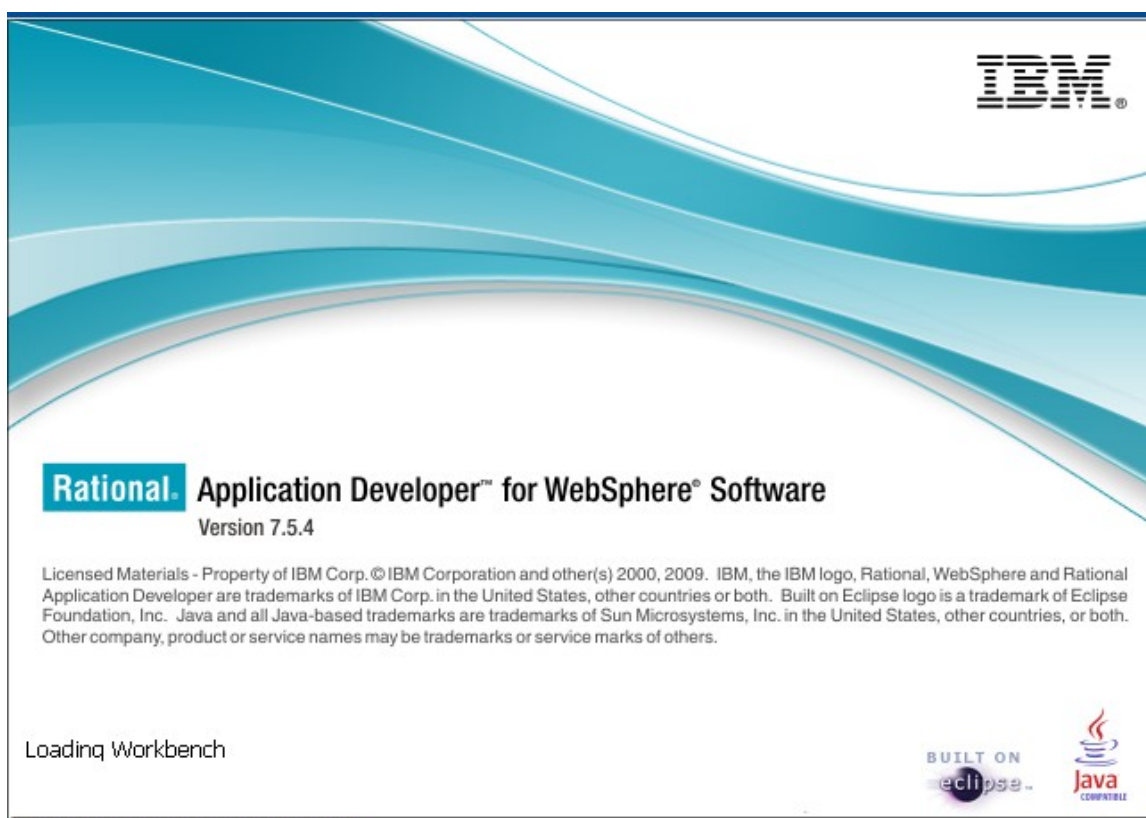
\_\_6. Select **Start->All Programs->IBM Software Delivery Platform->IBM Rational Application Developer 7.5->IBM Rational Application Developer**.

\_\_7. In the workspace window, change the **Workspace** to **C:\workspace**

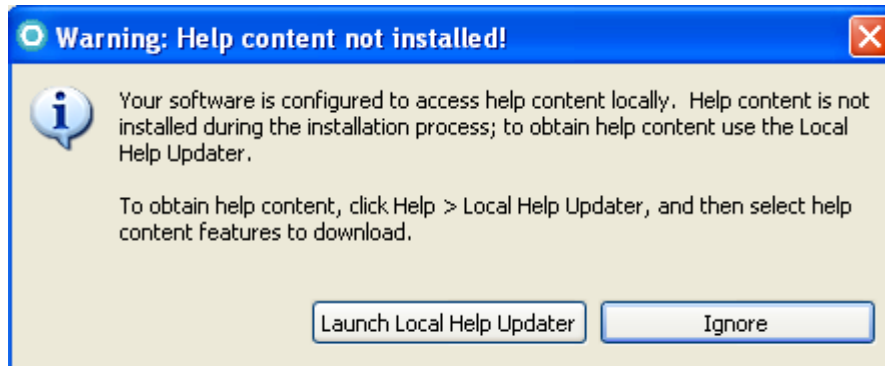


8. Click **OK**.

RAD 7.5.4 will start.

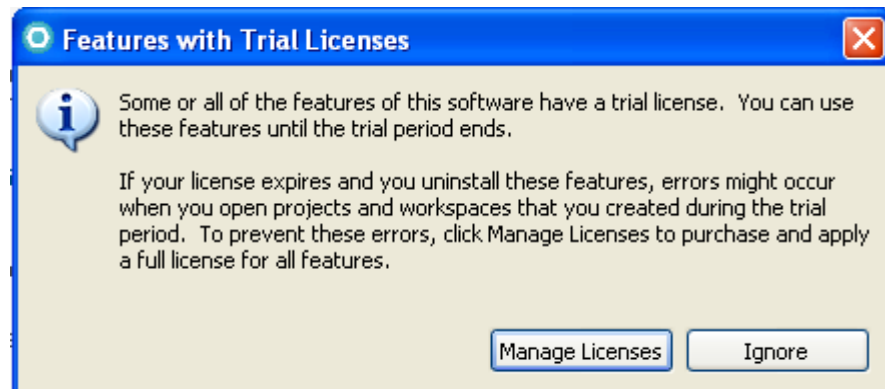


The **Warning: Help content not installed** dialog will open. It may takes some seconds to appear.



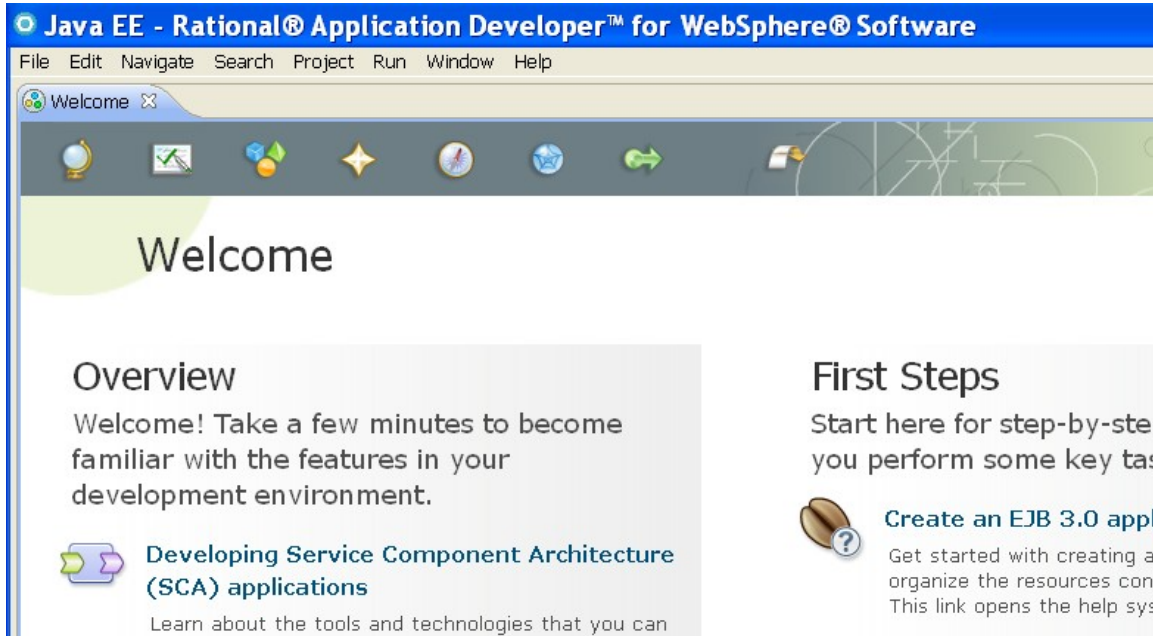
\_\_9. Click **Ignore**.

The **Features with Trial Licenses** dialog will open.



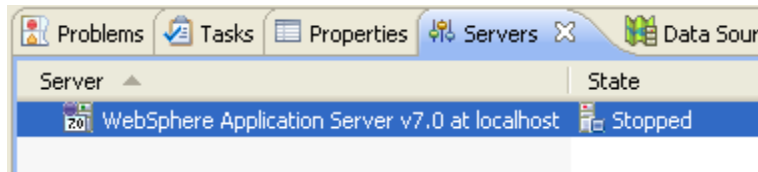
\_\_10. Click **Ignore**.

The **Welcome** page will open.



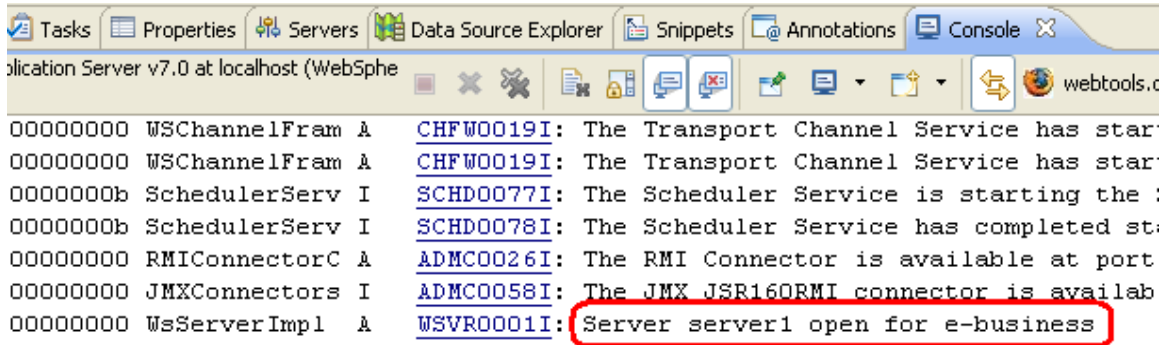
\_\_11. Close the **Welcome** page, by click the **X** button in its tab.

\_\_12. Click the **Servers** tab in the bottom panel. You should see **WebSphere Application Server v7.0 at localhost** listed.



\_\_13. Start the server by right clicking on **WebSphere Application Server v7.0 at localhost** and selecting **Start**.

\_\_14. The **Console** view will show a series of messages while the server is starting. Eventually, after the server finishes starting (which can take a few minutes), you will see the message **Server server1 open for e-business**. You will need to scroll up to find the message.



### Note

After the server is started you would see the following error message:

**SystemErr R Cannot load XSL files from C:\Program Files\IBM\SDP\runtimes\base\_v7\plugins\com.ibm.ws.runtime.jar**

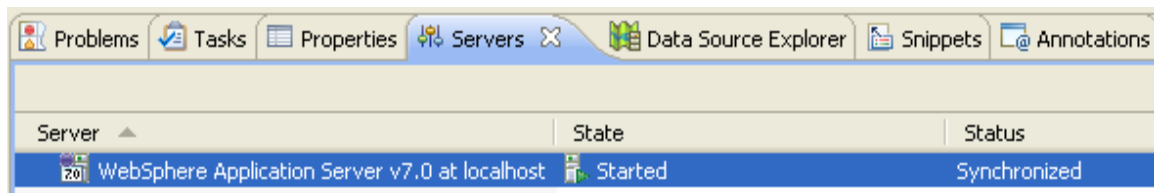
The error is displayed because some XSL files are missing from the com.ibm.ws.runtime.jar file which are used to retrieve product version information during server startup.

This problem is fixed in the Fix Pack 1 (7.0.0.1). **At this moment you can ignore this message and you don't need to install any fix pack, RAD will work fine.**

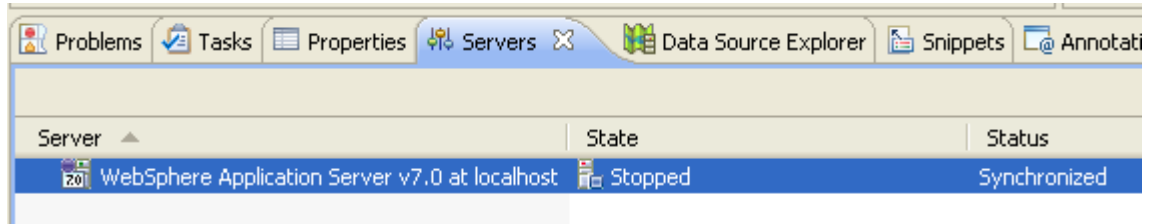
If you want to look for more information related with this fix pack you can search at:

[http://www-01.ibm.com/support/docview.wss?rs=0&q1=%22Cannot+load+XSL+files+%22&uid=swg1PK71997&loc=en\\_US&cs=utf-8&cc=us&lang=en](http://www-01.ibm.com/support/docview.wss?rs=0&q1=%22Cannot+load+XSL+files+%22&uid=swg1PK71997&loc=en_US&cs=utf-8&cc=us&lang=en)

\_\_15. Switch to the **Servers** view. The **Status** will have changed to **Started** for **WebSphere Application Server v7.0 at localhost**.



\_\_16. Now, stop the server by right clicking on **WebSphere Application Server v7.0** and selecting **Stop**. Shortly thereafter, the status for the server will change to **Stopped**.



\_\_17. From the menu, select **File->Exit** to close Rational Application Developer.

Congratulations, **Rational Application Developer v7.5.4** has been installed.

The installation for this course has been completed.