

WA1600 Mastering Rational Software Architect v7

Classroom Setup Guide

Web Age Solutions Inc.

Table of Contents

Classroom Requirements.....	3
Part 1 - Minimum Hardware Requirements	3
Part 2 - Minimum Software Requirements	3
Part 3 - Software Provided.....	4
Part 4 - Important Ghosting or Imaging Information.....	4
Software Installation.....	5
Part 1 - Preparation.....	5
Part 2 - Installing Rational Software Architect v7.0 Trial.....	6

Classroom Requirements

Part 1 - Minimum Hardware Requirements

- 1000 Mhz Pentium IV
- 1 GB RAM minimum, 2 GB recommended
- 10 GB in the hard disk
- Network connectivity to the Internet
- USB port

Part 2 - Minimum Software Requirements

- Microsoft Windows 2000 Professional SP4, Windows XP Professional SP2
- Adobe Acrobat Reader 6.0 (or higher)
- Internet Explorer 6.0 / Mozilla Firefox 1.5 (or higher)
- WinZip 8.0 (or higher)
- IBM Rational Software Architect v7.0 Trial *

* - indicates software provided as part of the courseware.

Part 3 - Software Provided

Number of USB memory sticks that you will receive: **2**

Name of the files containing in the memory sticks (one file per memory stick):

- **WA1600_1.ZIP**
- **WA1600_2.ZIP**

All other software listed under Minimum Software Requirements is either commercially licensed software that you must provide or software that is freely available off the Internet.

Part 4 - Important Ghosting or Imaging Information

Some of the software installed for this course will not function after changing the computer hostname. As such, cloning or imaging should not be used on a fully installed system.

You can save time by extracting the contents of the USB memory stick to C:\ on a clean OS install (no other software installed) and then imaging that hard drive. After restoring the image to the other computers and changing the hostnames, you can then install the software on each computer individually by following the instructions that are detailed later in this document.

Software Installation

Part 1 - Preparation

__1. From the USB memory stick 1, extract the **WA1600_1.ZIP** file to C:\

__2. From the USB memory stick 2, extract the **WA1600_2.ZIP** file to C:\

__3. Review that the following folders were created:

- **C:\LabFiles**
- **C:\Software\RSA70**

Part 2 - Installing Rational Software Architect v7.0 Trial



Warning: You cannot use ghosting or disk imaging to install this software. You must install the software on each machine separately. Do not change the computer hostname after this software is installed. Also, do not install this software from a network share. It will only function partially if you do.

__1. From **C:\Software\RSA70\disk1** execute the **launchpad.exe** file. This will start the installation process.

The Installation window will appear.

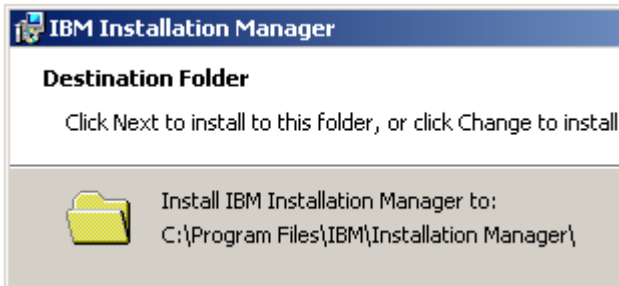


__2. Click on the ***Install IBM Rational Software Architect V7.0*** link.

__3. At the *Welcome to the InstallShield Wizard for IBM Installation Manager* page click **Next**.

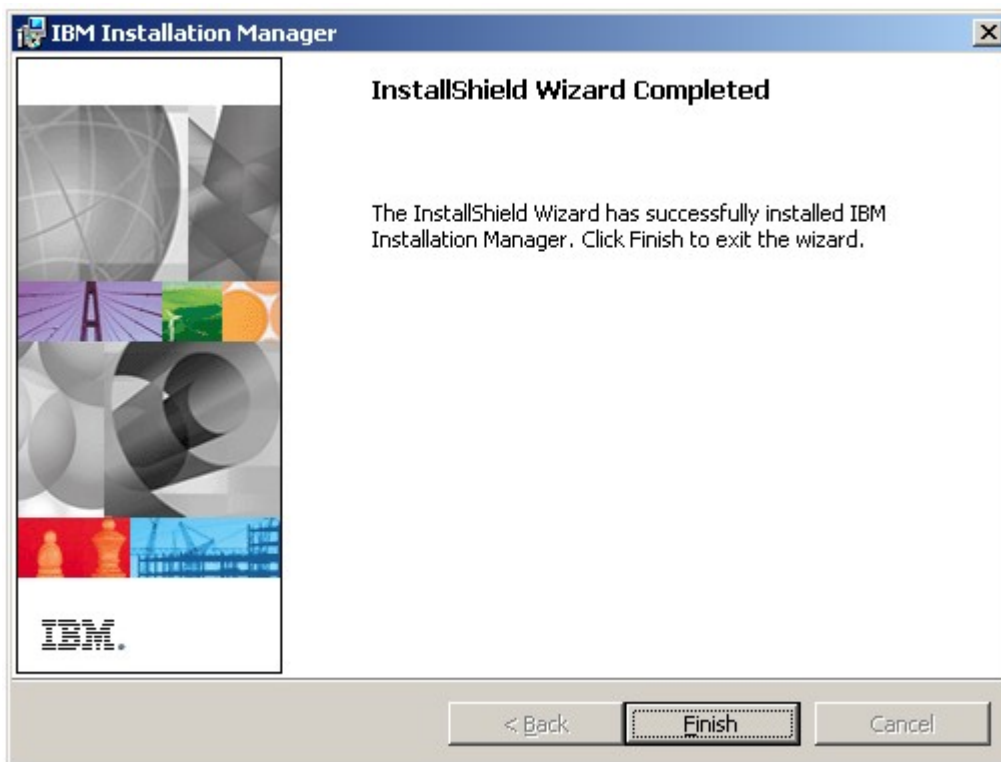
__4. Accept the license agreements and click **Next**.

__5. Leave the default destination folder as shown below and click **Next**.



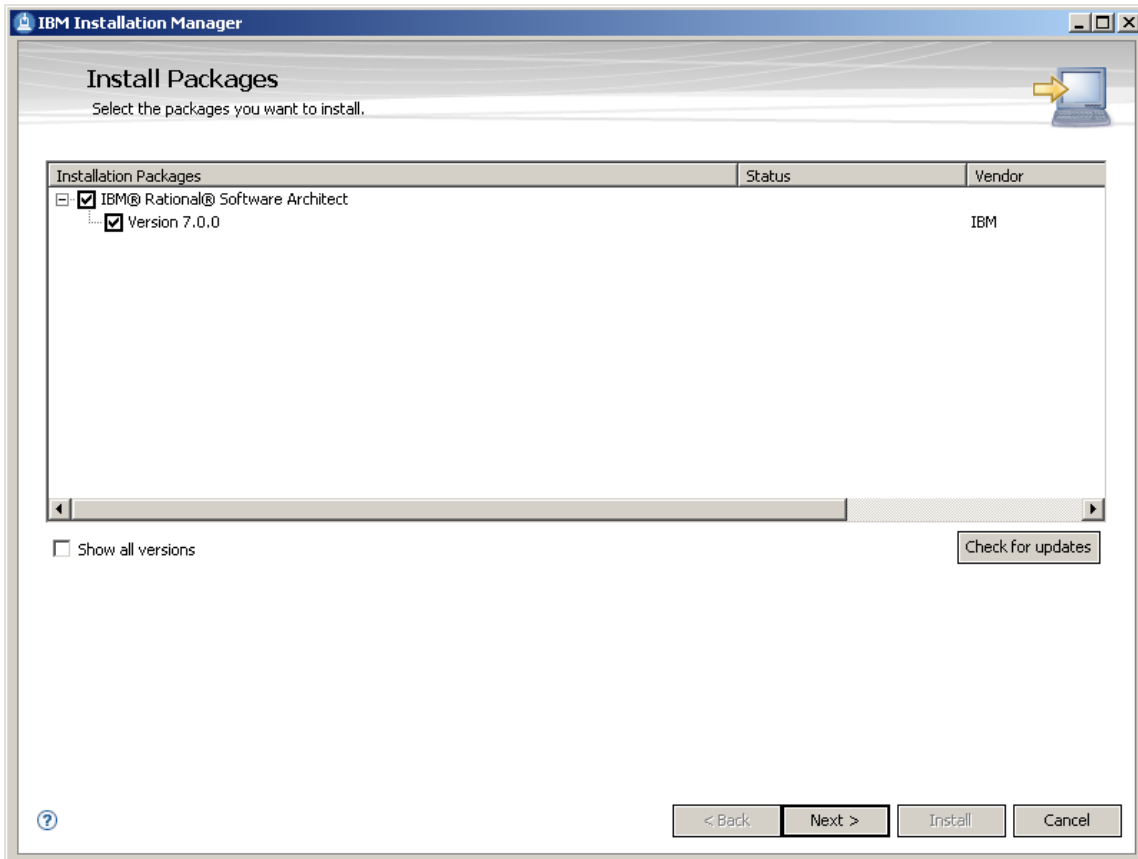
__6. Click **Install**.

Wait until the installation finish. Eventually the **InstallShield Wizard Completed** message appears.



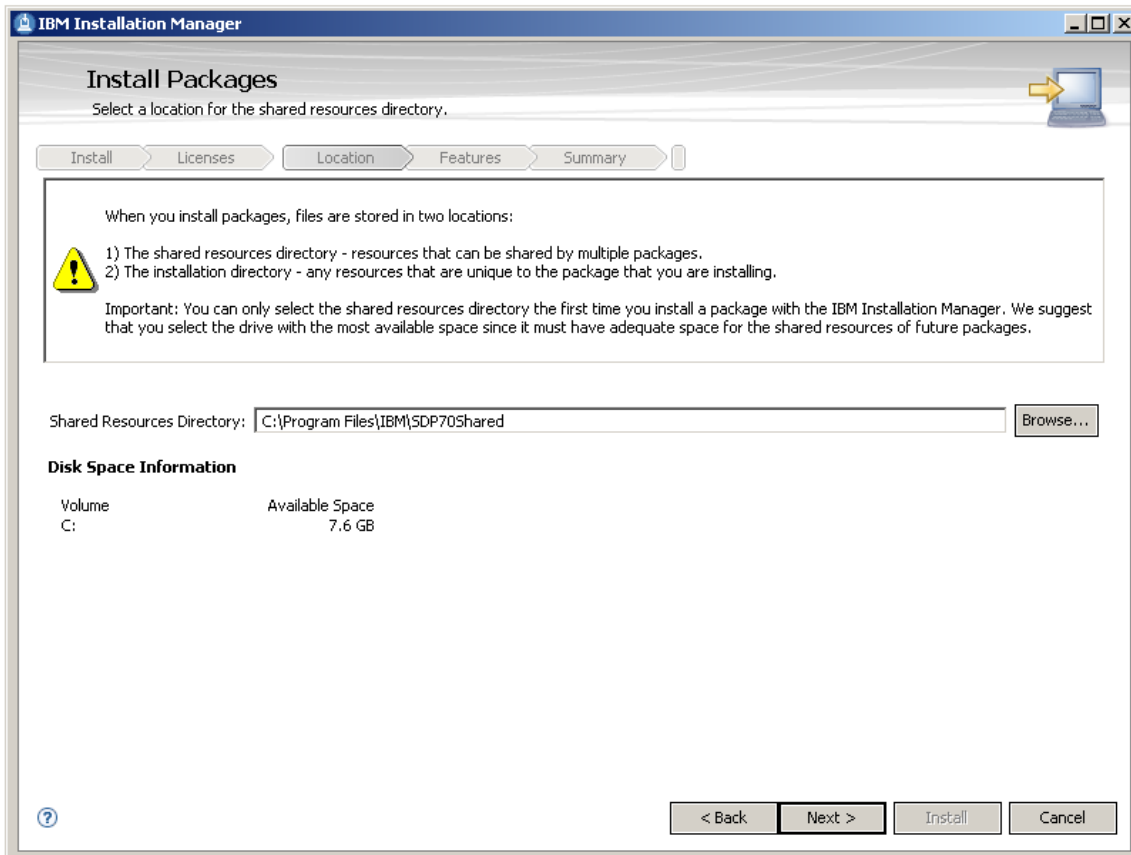
__7. Click **Finish**.

8. The *Install Packages* window will appear, check that **IBM Rational Software Architect Version 7.0.0** is checked as shown below and click **Next**.

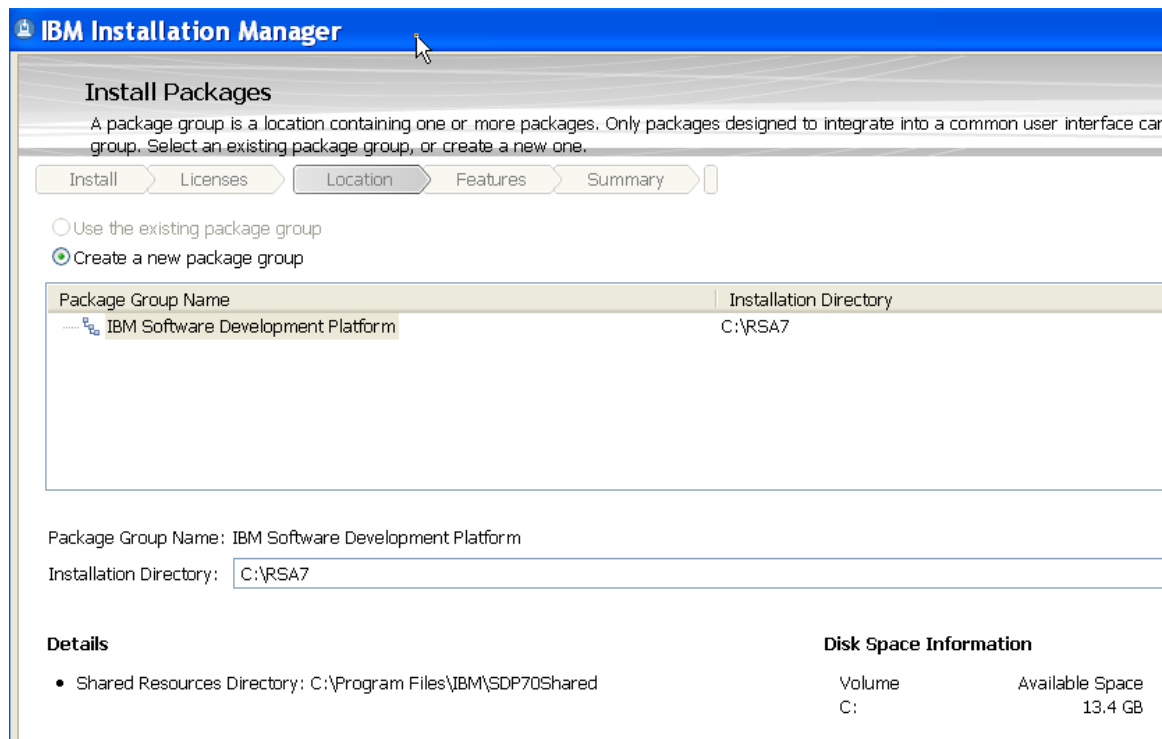


9. Accept the license agreements and click **Next**.

10. Leave the default installation folder to install the shared resources as shown below and click **Next**.



11. At the installation directory to install the *IBM Software Development Platform* change the path to **C:\RSA7** as shown below.



IMPORTANT: You must change the installation folder to **C:\RSA7**. The default directory is too long and will cause problems with the normal working of the product.

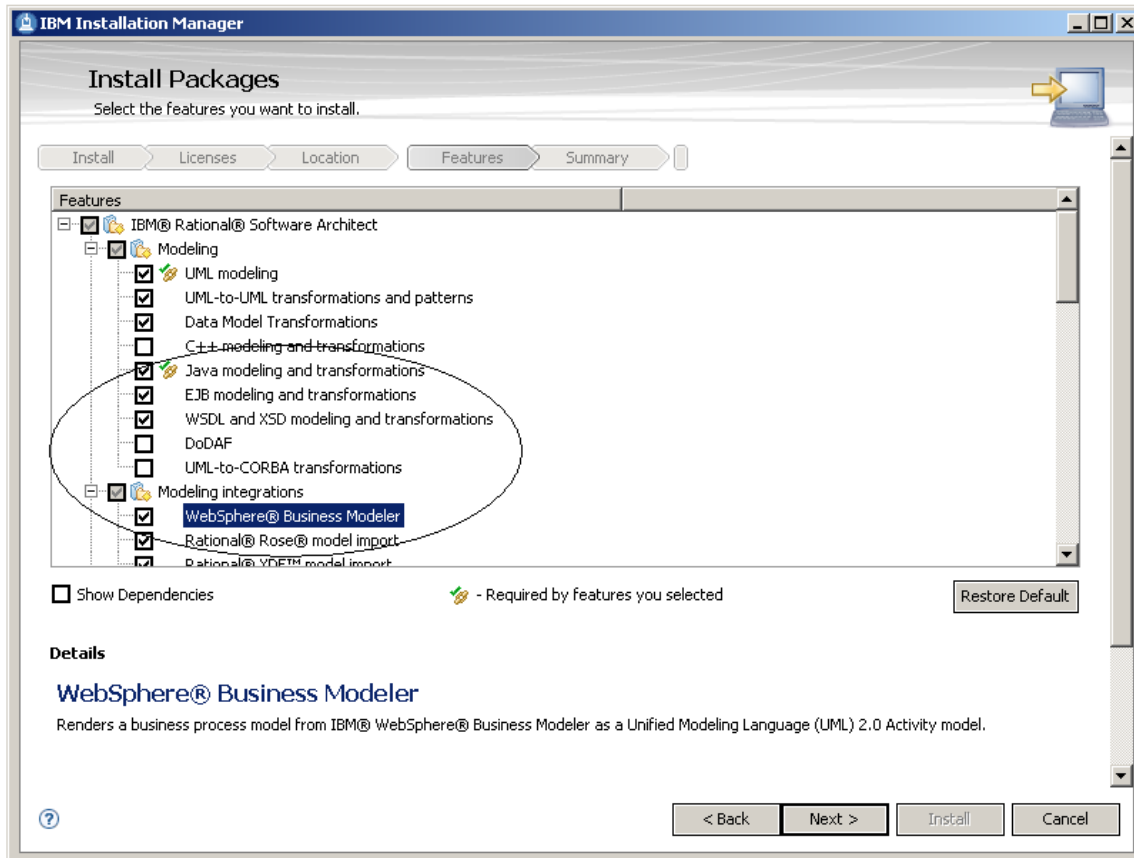
12. Click **Next**.

13. At the next page the installation asks for Eclipse compatibility, click **Next**.

14. Leave the default language and click **Next**.

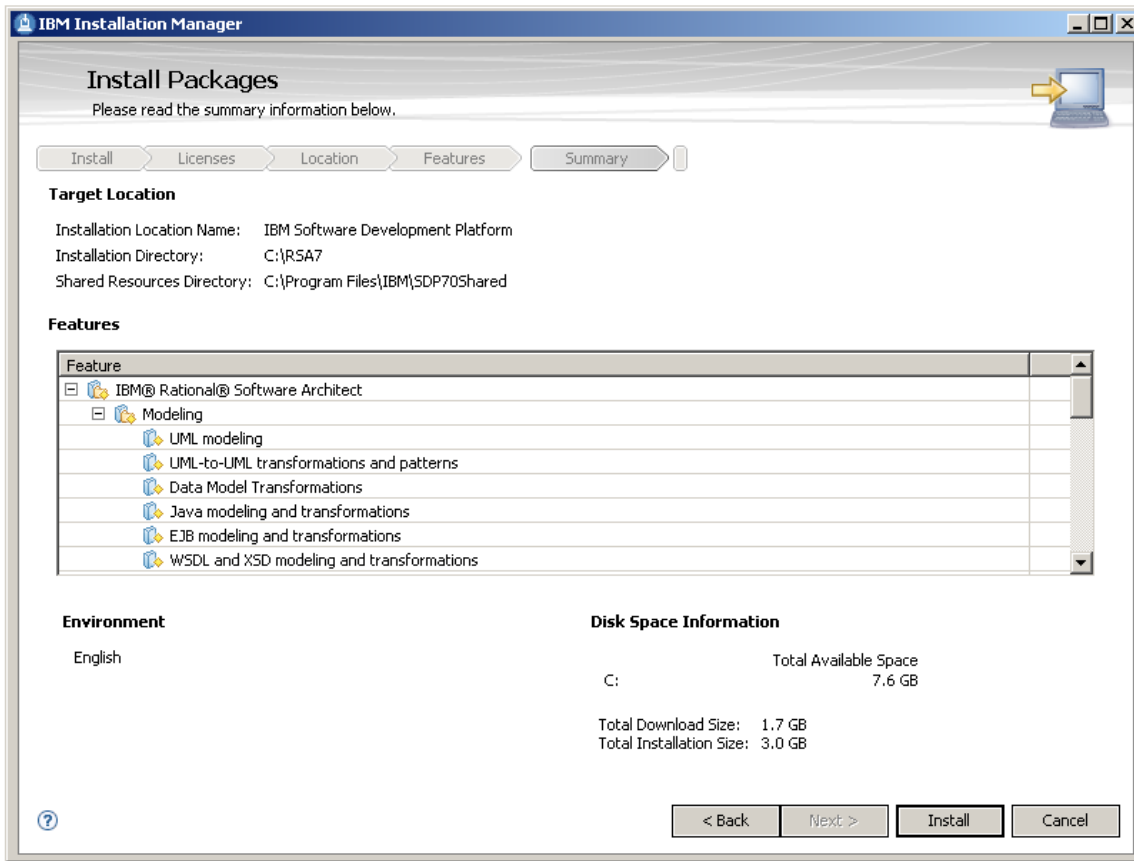
15. In the list of features, leave all as default and check the following:

- **EJB modeling and transformations** under Modeling
- **WSDL and XSD modeling and transformations** under Modeling
- **WebSphere Business Modeler** under Modeling integrations



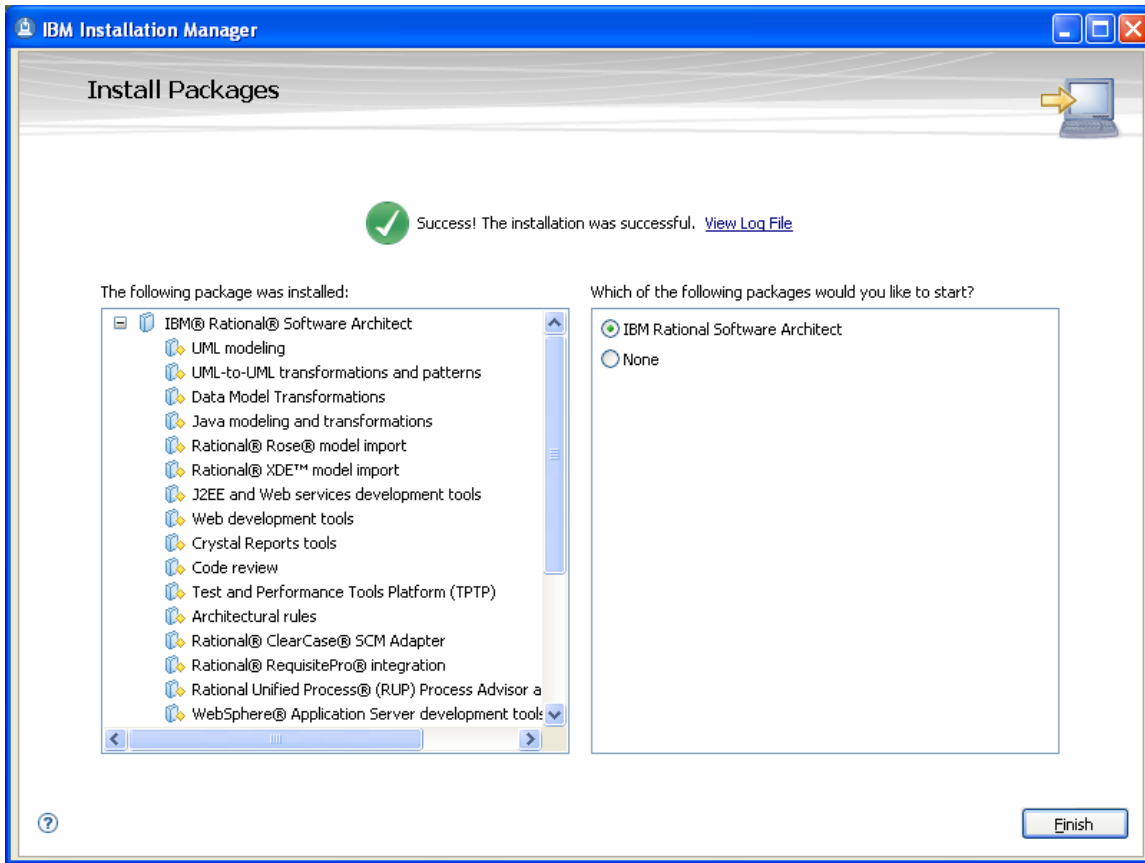
__16. When the features are selected as they shown above click **Next**.

The summary page will appear.



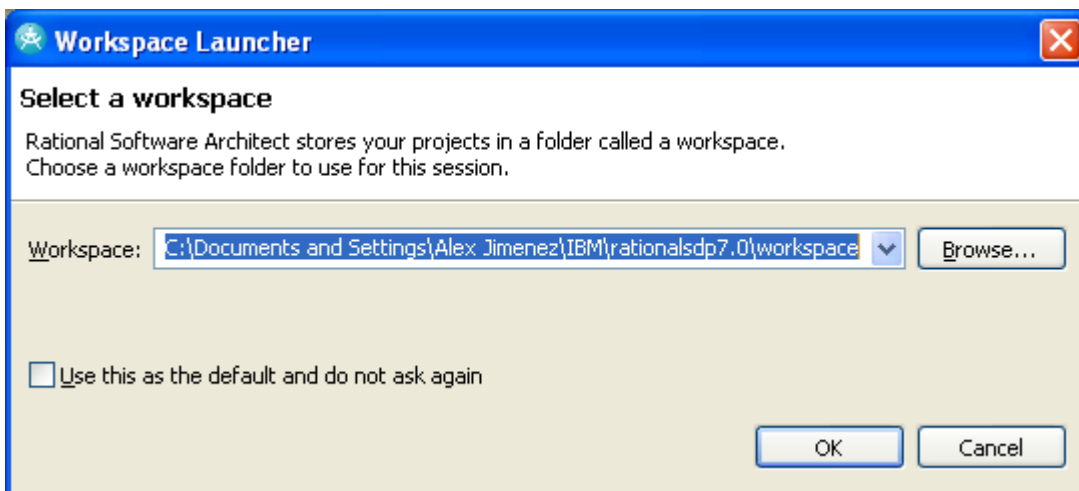
__17. Click **Install**. Wait patiently, the setup may take some hours to install the software depending on the hardware.

Eventually the following page appears showing a successful installation.



__18. Click **Finish**.

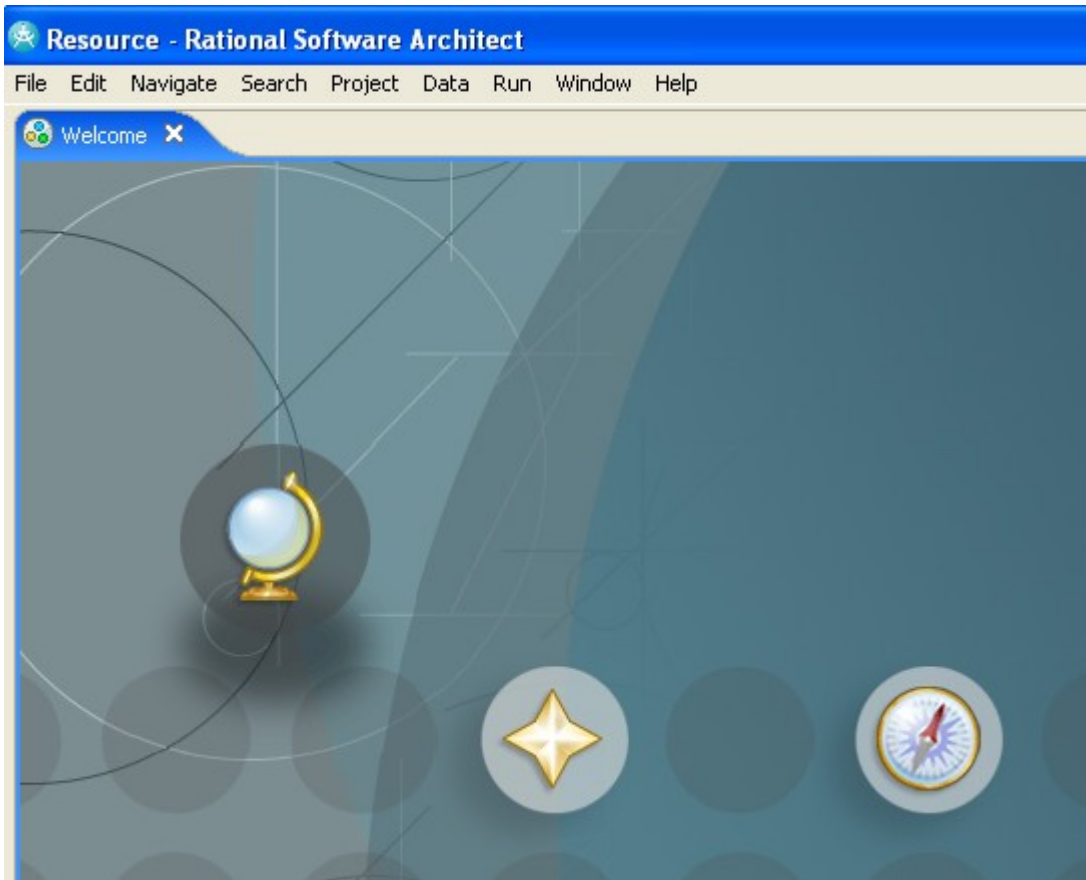
__19. Rational Software Architect v7.0 will start, at the *Workspace launcher* dialog, click **OK** to use the default workspace folder.



__20. If a *Windows Security Alert* dialog appears, click **UnBlock**.



__21. The Welcome screen will appear. Close it.



Congratulations. The installation of WA1600 Mastering Rational Software Architect v7 has been completed.