

# **WA2625 Comprehensive Angular 4 Programming**

**Classroom Setup Guide**

**Web Age Solutions Inc.**

## Table of Contents

Part 1 - Minimum Hardware Requirements.....	3
Part 2 - Minimum Software Requirements .....	3
Part 3 - Software Provided.....	3
Part 4 - Instructions.....	4
Part 5 - Installing Node.js 6.9.5.....	4
Part 6 - Summary.....	8

## **Part 1 - Minimum Hardware Requirements**

- 3GB RAM minimum, 4 GB + recommended
- 10 GB in the hard disk
- Internet connection

## **Part 2 - Minimum Software Requirements**

- Windows OS: Windows 7 / 10, Windows Server 2012.
- Latest Google Chrome browser
- Notepad+ \*
- Nodejs \*

\* - indicates software provided as part of the courseware.

## **Part 3 - Software Provided**

You will receive the following file:

- **WA2625.ZIP**

All other software listed under Minimum Software Requirements is either commercially licensed software that you must provide or software that is freely available off the Internet.

## Part 4 - Instructions

\_\_1. Make sure the account that you are using to install the software has administrative privileges and the student using this machine will have the same rights.

\_\_2. Extract the **ZIP** file to C:\

\_\_3. Review that the following folders were created:

- C:\LabFiles\
- C:\Software\
- C:\Software\node-v6.9.5
- C:\Software\NotepadPlus\

\_\_4. Make sure the C:\Software and C:\LabFiles folders are **writable** by the students, if they are read-only then the software won't work and students will have problems during the labs.

\_\_5. Download and install the latest Google Chrome browser from:

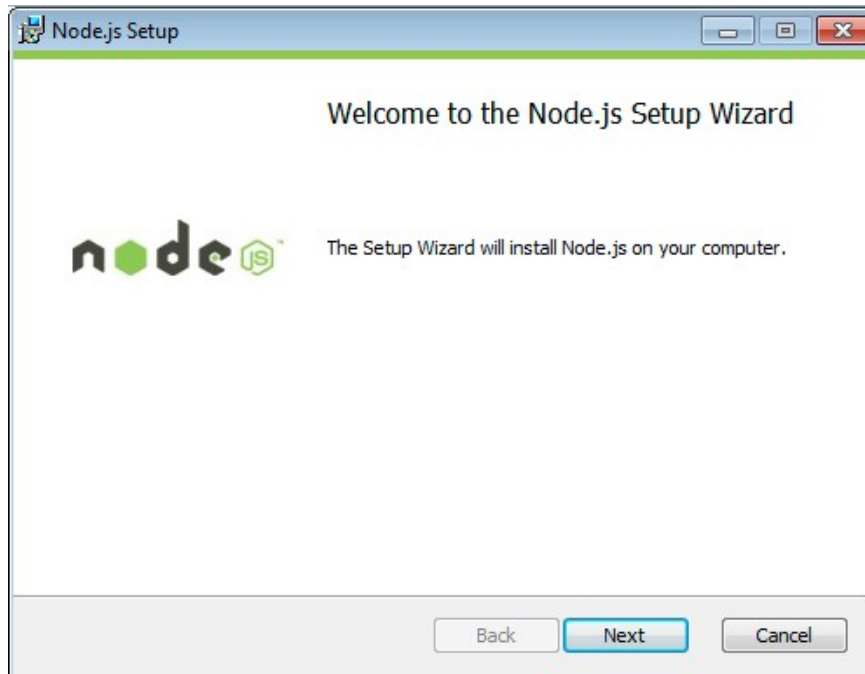
<https://www.google.com/intl/en/chrome/browser>

## Part 5 - Installing Node.js 6.9.5

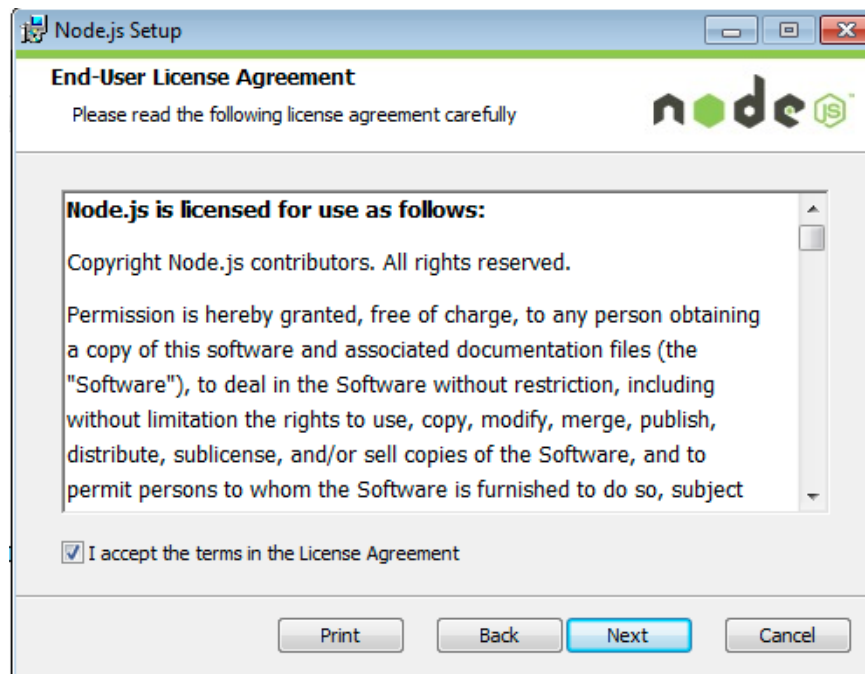
\_\_1. Open C:\Software\node-v6.9.5

\_\_2. Double click **node-v6.9.5-x86.msi** to begin installation.

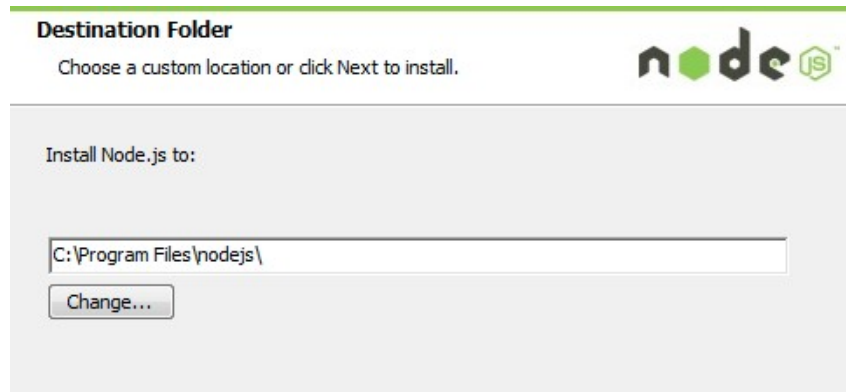
\_\_3. Click **Next**.



\_\_4. Check **I accept the terms...** and click **Next**.

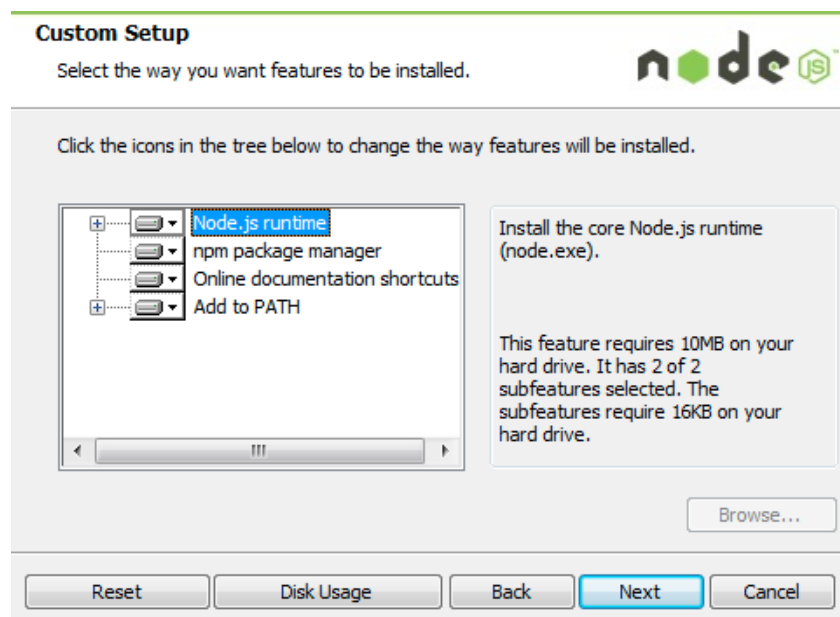


\_\_5. Accept default destination folder and click **Next**.

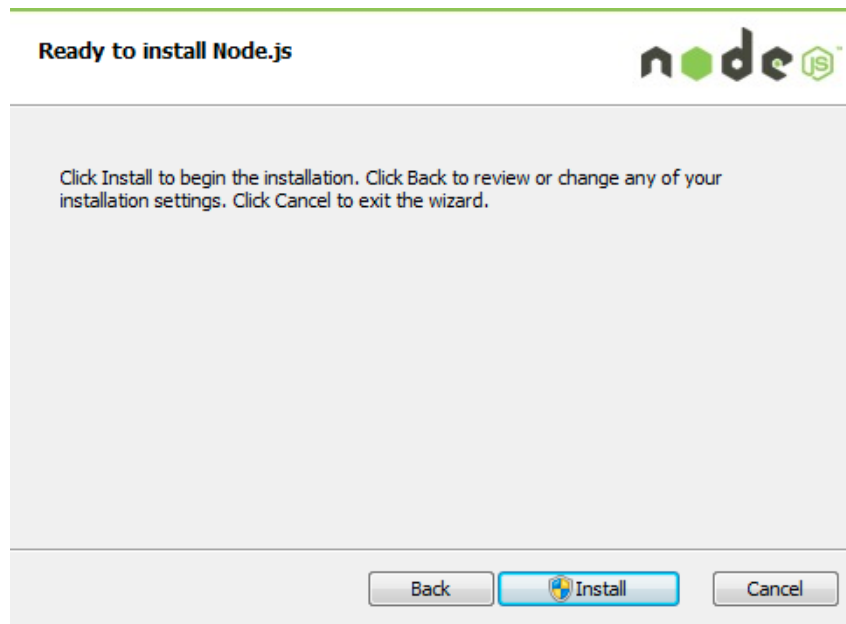


**Note:** Your installation location may be slightly different. Accept whatever the default is.

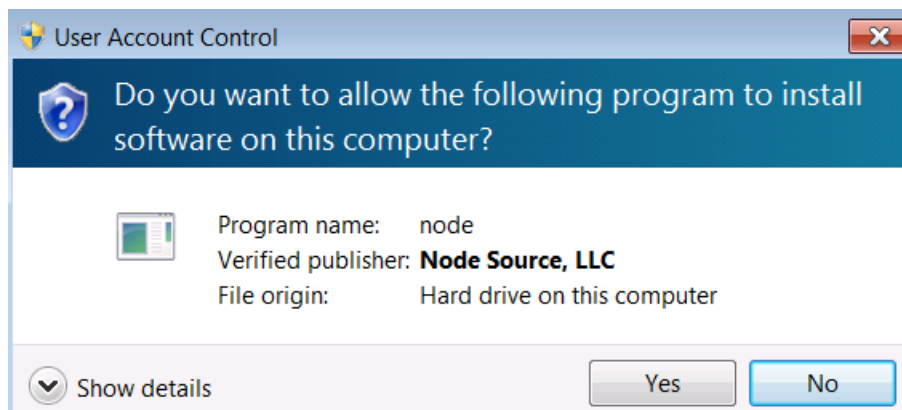
\_\_6. Accept default package selection. Click **Next**.



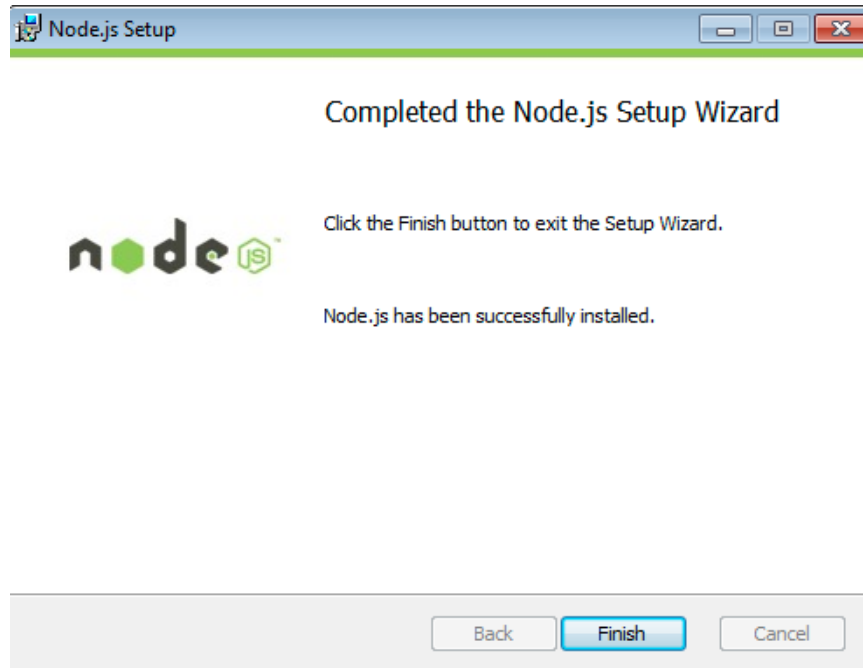
\_\_7. Click **Install**.



\_\_8. A popup window may open asking to install the software. Click Yes to continue.



\_\_9. Click **Finish**.



### Installation verification of Node.js

\_\_1. Open a command prompt window.

\_\_2. Enter the command:

```
node --version
```

\_\_3. Make sure that you see **v6.9.5** as the output.

\_\_4. Close all.

### Part 6 - Summary

## You have successfully installed the software for this course!

If you have any question please contact us by email at [support@webagesolutions.com](mailto:support@webagesolutions.com)

From US and Canada call: 1-877-812-8887 ext. 26

International call: 416-406-3994 ext. 26