

WA1853 WebSphere Process Server v7.0 Administration

Classroom Setup Guide

Web Age Solutions Inc.

Table of Contents

Part 1 - Minimum Hardware Requirements	3
Part 2 - Minimum Software Requirements	4
Part 3 - Software Provided.....	5
Part 4 - Important Ghosting or Imaging Information.....	6
Part 5 - Installation.....	7
Part 6 - Installing WebSphere Integration Developer v7.0.....	8
Part 7 - Verification of the installation of WID 7.0.....	12
Part 8 - Installing DB2 Enterprise Server Edition v9.5.....	13
Part 9 - Installing WebSphere MQ v7.0 Trial.....	22

Part 1 - Minimum Hardware Requirements

- Pentium 4 – 2.4 GHz or higher
- 2 GB RAM minimum (3-4 GB highly recommended)
- 24 GB free on the C drive.
- Ethernet or Token Ring card
- USB port
- Network connectivity to the Internet

Part 2 - Minimum Software Requirements

- Microsoft Windows XP SP2 or Windows Vista (Business, Ultimate, or Enterprise)
- Internet Explorer 6.0, Mozilla Firefox 2.0 (or higher)
- Unzip tool such as WinZip or WinRAR.
- Acrobat Reader.
- WebSphere Application Server Supplements v7.0 *
- WebSphere Process Server v7.0 *
- WebSphere Integration Developer v7.0 (WID v7.0) *
- DB2 Enterprise Server Edition v9.5 *
- WebSphere MQ 7.0 *

* - indicates software provided as part of the courseware.

Part 3 - Software Provided

Number of USB memory sticks that you will receive: **4**

Name of the files contained in the memory sticks (one file per memory stick):

- **WA1853_1.ZIP**
- **WA1853_2.ZIP**
- **WA1853_3.ZIP**
- **WA1853_4.ZIP**

All other software listed under Minimum Software Requirements is either commercially licensed software that you must provide or software that is freely available.

Part 4 - Important Ghosting or Imaging Information

Some of the software installed for this course will not function after changing the computer hostname. As such, cloning or imaging should not be used on a fully installed system.

You can save time by extracting the contents of the USB memory stick to C:\ on a clean OS install (no other software installed) and then imaging that hard drive. After restoring the image to the other computers and changing the hostnames, you can then install the software on each computer individually by following the instructions that are detailed later in this document.

Part 5 - Installation

- __1. Create a user named **wasadmin** with password **wasadmin** who belongs to the Administrators group.
- __2. Log in as **wasadmin**. Make sure to login to Windows as this user when installing all software for this class.
- __3. From a USB memory stick, extract the **WA1853_1.ZIP** file to C:\
- __4. From a USB memory stick, extract the **WA1853_2.ZIP** file to C:\
- __5. From a USB memory stick, extract the **WA1853_3.ZIP** file to C:\
- __6. From a USB memory stick, extract the **WA1853_4.ZIP** file to C:\
- __7. Review that the following folders were created:
 - **C:\LabFiles**
 - **C:\Software**
 - **C:\Software\DB2 v9.5 ESE**
 - **C:\Software\ProcessServer70**
 - **C:\Software\WAS ND v70**
 - **C:\Software\WebSphere MQ v7.0 Trial**
 - **C:\Software\WID7.0**

Part 6 - Installing WebSphere Integration Developer v7.0



Warning: You cannot use ghosting or disk imaging to install this software. You must install the software on each machine separately. Do not change the computer hostname after this software is installed. Also, do not install this software from a network share. It will only function partially if you do.

Approximately time for installation of WID 7.0: 90 minutes

__1. From C:\Software\WID7.0 run **launchpad.exe**

The Welcome to WebSphere Integration Developer Installation page will open.

Welcome to WebSphere Integration Developer Installation

The installation requires that you first install WebSphere Integration Developer and the environment.

The default installation requires 6.5 GB of disk space.

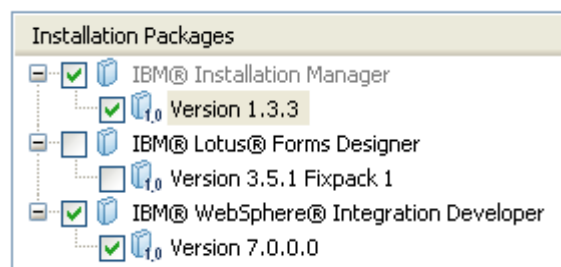
Note: You can install using this launchpad only as an administrative or root user. To install as a root user, see [these instructions](#).

Complete the following steps in order:

1.  [Install IBM® WebSphere® Integration Developer V7.0](#)
Installs WebSphere Integration Developer.
2.  [Install WebSphere Application Server](#)

__2. Click on **Install IBM WebSphere Integration Developer V7.0**

The **Install Packages** page will open.



__3. Leave all the defaults selected as shown above and click **Next**.

__4. Accept the license terms and click **Next**.

_____ "IBM" is Tr

I accept the terms in the license agreements


I do not accept the terms in the license agreements

__5. Leave the default directories for the installation and click **Next**.


Install > Licenses > **Location** > Features > Summary

When you install packages, files are stored in two locations:

- 1) The shared resources directory - resources that can be shared by multiple packages.
- 2) The installation directory - any resources that are unique to the package that you are installing.

 Important: You can only select the shared resources directory the first time you install a package. You must select the drive with the most available space because it must have adequate space for the installation.

Shared Resources Directory: C:\Program Files\IBM\SDPShared

 Once installed, IBM Installation Manager will be used to install, update, modify, manage and uninstall packages.

Installation Manager Directory: C:\Program Files\IBM\Installation Manager\eclipse

__6. Leave the default directories for the installation of **WID7** and click **Next**.

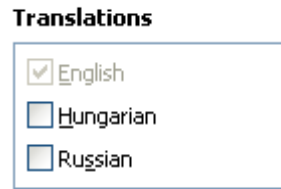
Create a new package group

Package Group Name	Installation Directory
..... IBM WebSphere Integration Developer	C:\Program Files\IBM\WID7

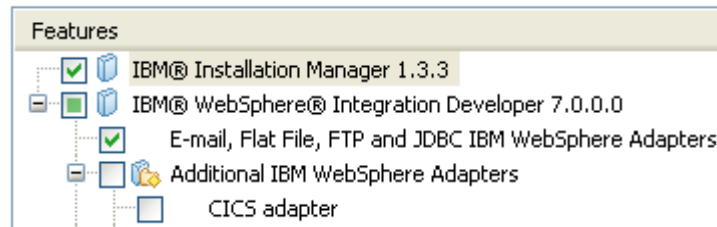
Package Group Name: IBM WebSphere Integration Developer

Installation Directory: C:\Program Files\IBM\WID7

__7. Leave the default language and click **Next**.

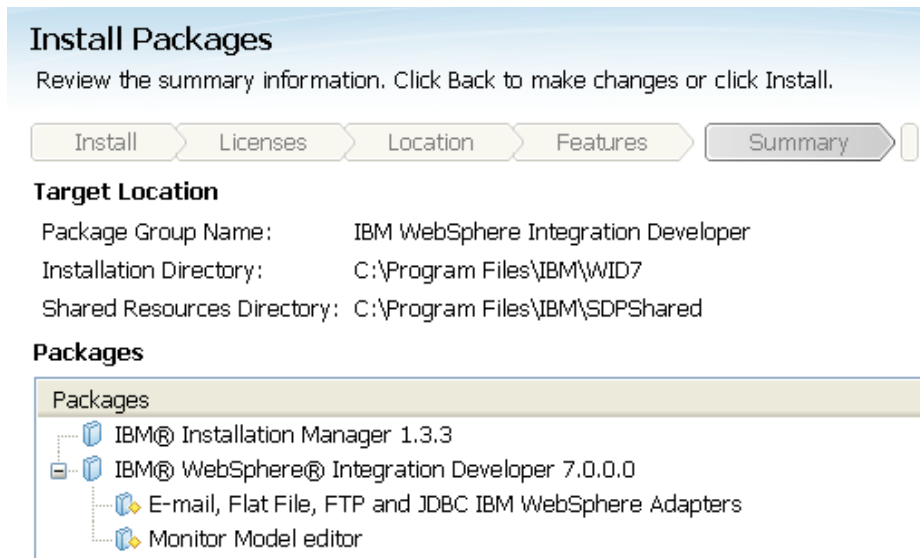


The features to install page will open.




__8. Click **Next**.




__9. Click **Install** to start installing the product. This will take some time.



__10. Verify that installation completed successfully.

 The packages are installed. [View Log File](#)

The following package was installed into package group IBM WebSphere Integration Developer :

-  IBM® WebSphere® Integration Developer
 -  E-mail, Flat File, FTP and JDBC IBM WebSphere Adapters
 -  Monitor Model editor

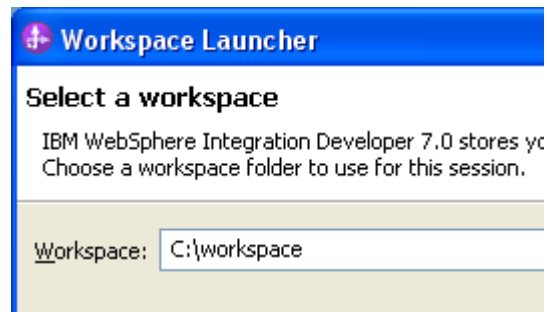
__ 11. Click **Finish**.

__ 12. Close the Launchpad.

Part 7 - Verification of the installation of WID 7.0

__1. Launch WID using the following Windows start menu: **Start->All Programs ->IBM WebSphere Integration Developer->IBM WebSphere Integration Developer V7.0->WebSphere Integration Developer V7.0.**

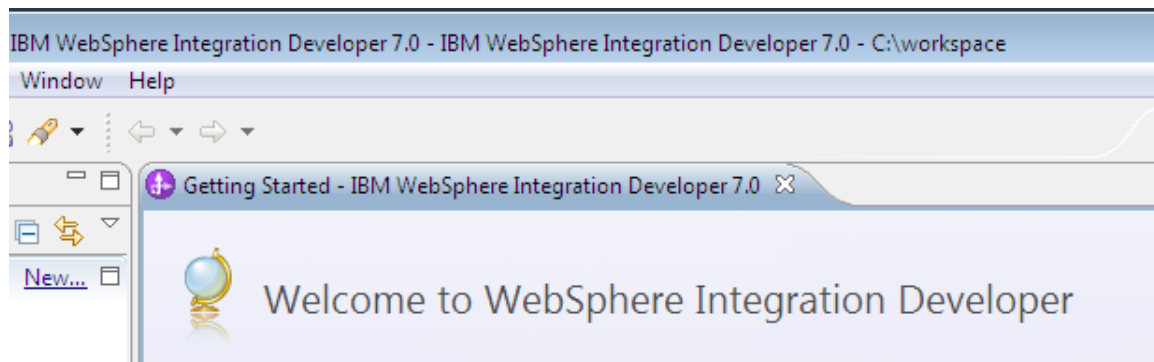
__2. Change the workspace to **C:\workspace** as shown below.



__3. Click **OK**.

__4. If you are prompted by the Windows firewall about blocking a program unblock it.

__5. The Welcome window will open. Close it.



__6. Exit WID by choosing **File->Exit** from the menu bar.

__7. Close all the open files.

Congratulations! The product has successfully been installed.

Part 8 - Installing DB2 Enterprise Server Edition v9.5



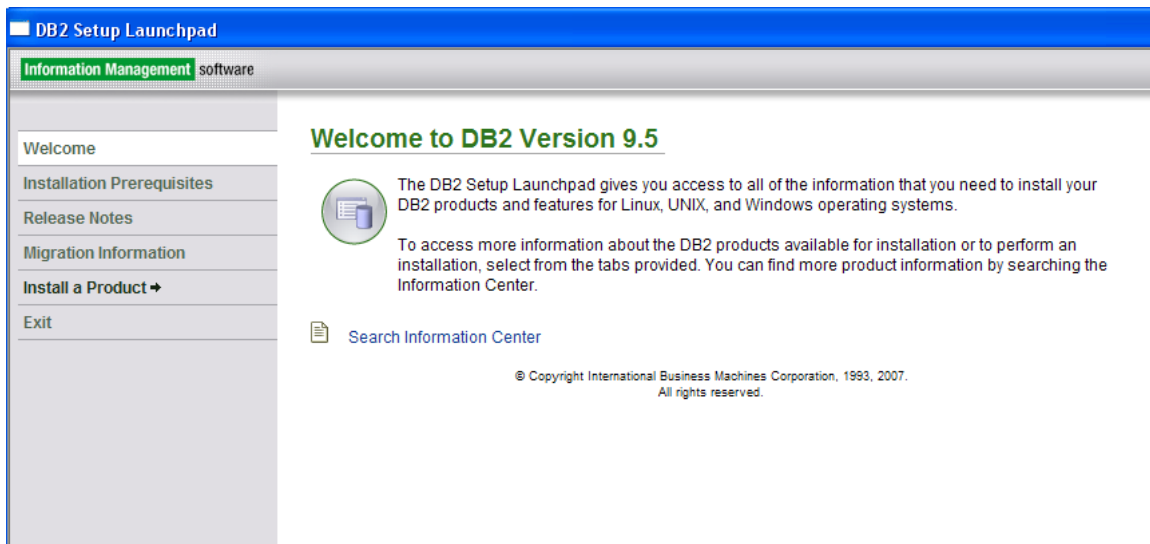
Warning: You cannot use ghosting or disk imaging to install this software. You must install the software on each machine separately. Do not change the computer hostname after this software is installed. Also, do not install this software from a network share. It will only function partially if you do.

Average time to install this software: 20 minutes

__1. Browse to **C:\Software\DB2 v9.5 ESE** and launch **setup.exe**.

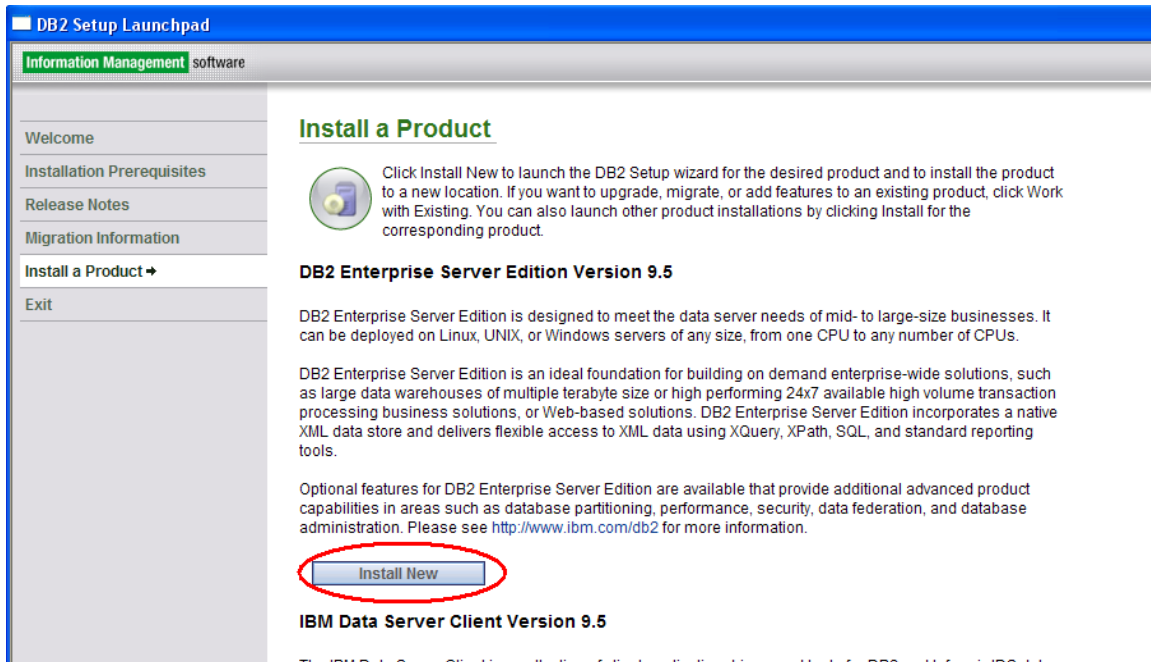
Note: If installing on Windows Vista you must right-click the **setup.exe** program and select **Run as administrator**. Failure to do so will cause errors during installation that will make the software unusable.

The **DB2 Setup Launchpad** page will appear.



__2. Click **Install a Product**.

The *Install a Product* page will appear.



3. Click the **Install New** button underneath the **DB2 Enterprise Server Edition Version 9.5** heading.

Wait a few seconds until the *Welcome to the DB2 Setup wizard for DB2 Enterprise Server Edition, Version 9.5* page appears.



__4. Click **Next**.

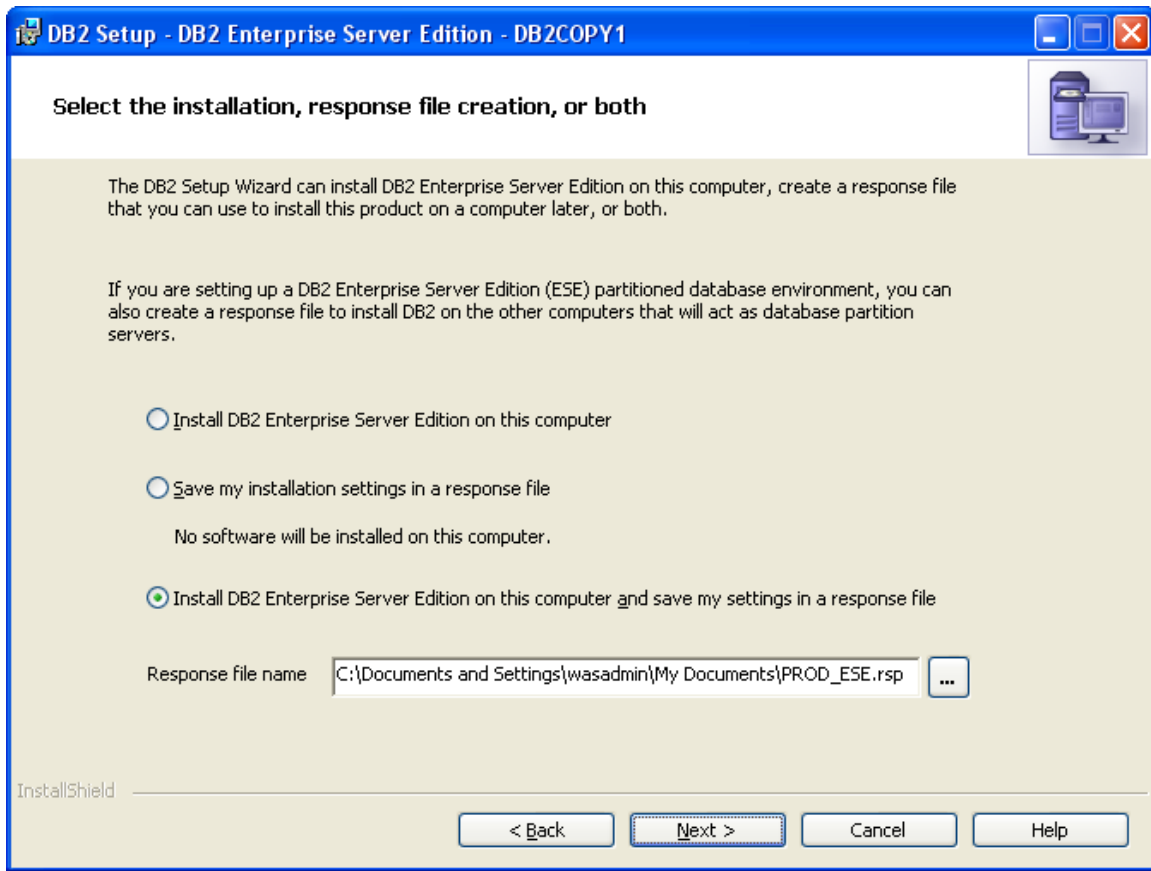
__5. The *Software License Agreement* page will appear. Click the **I accept the terms in the license agreement** radio button.

__6. Click **Next**.

The *Select the installation type* page will appear.

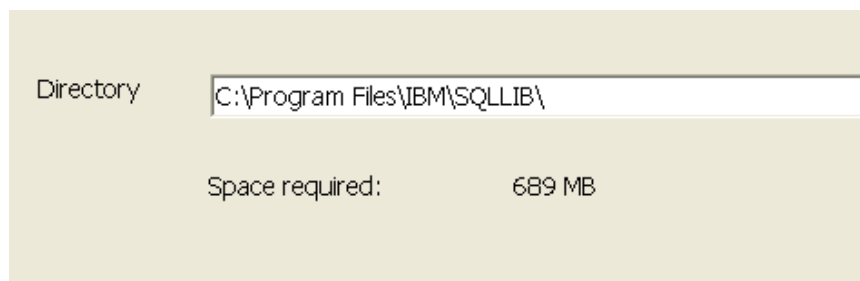
__7. Leave the **Typical** installation option selected and click **Next**.

The *Select the installation action, response file creation, or both* page will appear.



8. Leave **Install DB2 Enterprise Server Edition on this computer and save my settings in a response file** selected and click **Next**.

The *Select the installation folder* page will appear.



9. Leave the default directory and click **Next**.

The *Set user information for the DB2 Administration Server* page will appear.

10. Change the **Password** (and **Confirm Password**) to **db2admin**

User information

Domain: None - use local user account

User name: db2admin

Password: *****

Confirm password: *****

Use the same user name and password for the remaining DB2 services

InstallShield

< Back Next > Cancel Help

Note: If you can't use this password because of password policies use a password that will satisfy password policies. Make sure to tell the instructor that the DB2 software was installed with a different user and/or password.

__ 11. Click **Next**.

The *Configure DB2 instances* page will appear.

__ 12. Leave the defaults and click **Next**.

The *Prepare the DB2 tools catalog* page will appear.

__ 13. Leave the defaults and click **Next**.

The *Set up notifications* page will appear.

__ 14. Uncheck **Set up your DB2 server to send notifications**.

Set up your DB2 server to send notifications

Notification SMTP server

Administration contact list location

Local - Create a contact list on this computer

Remote - Use an existing contact list on another DB2 server

Remote DB2 server

__15. Click **Next**.

The *Enable operating system security for DB2 objects* page will appear.

__16. Uncheck **Enable operating system security**.

Enable operating system security

Information on the DB2 administrators group and DB2 users group is available by clicking Help.

DB2 administrators group

Domain

Group name

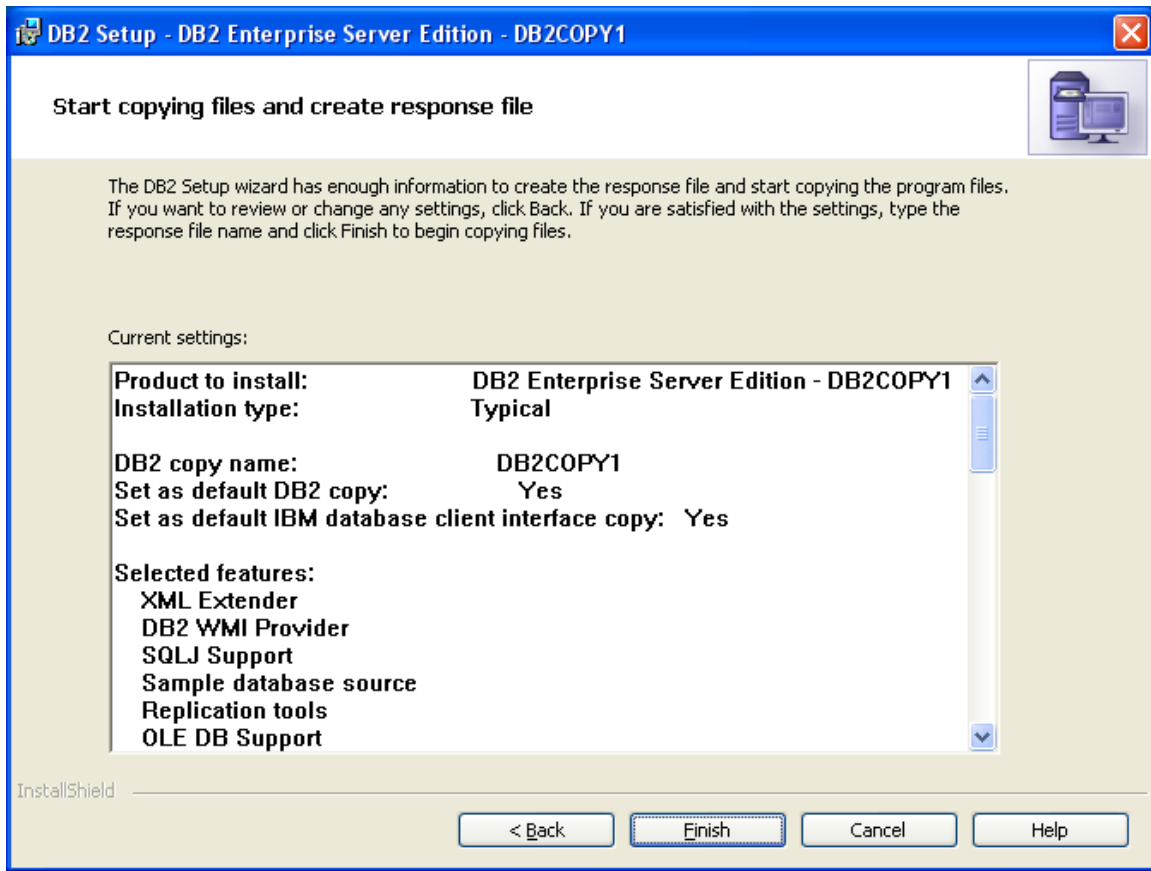
DB2 users group

Domain

Group name

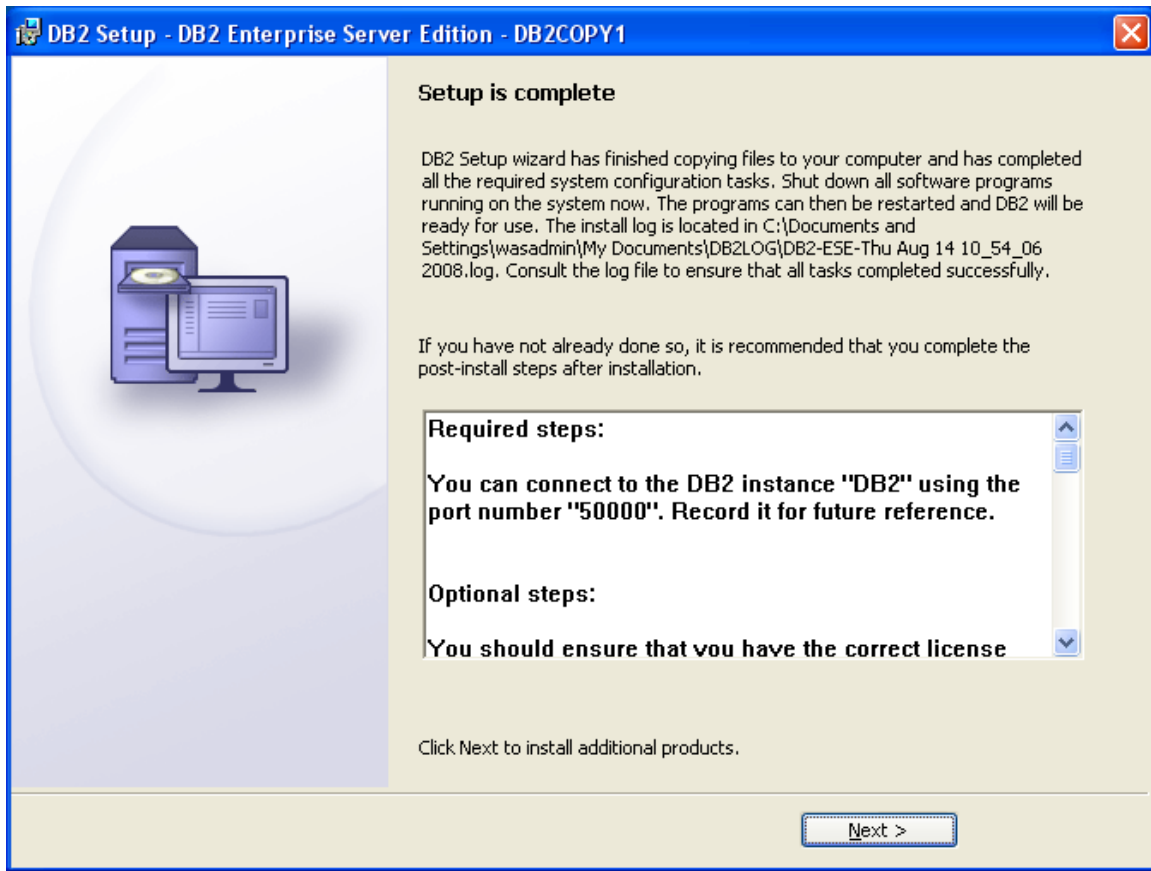
__17. Click **Next**.

The *Start copying files and create response file* page will appear.



__18. Click **Finish** and DB2 will begin installing. This will take some time.

Eventually, the *Setup is complete* page will appear.



__19. Click **Next**.

The *Install additional products* page will appear.

__20. Click **Finish**.

The *Welcome to First Steps for DB2 Database for Linux, UNIX, and Windows* page will appear.

DB2 Database for Linux, UNIX, and Windows
Version 9.5

Welcome to First Steps

Database Creation

Database Administration


Application Development

Technical Resources

Product Updates

Exit

Welcome to First Steps for DB2 Database for Linux, UNIX, and Windows



First Steps introduces some of the key database functions that you can perform using DB2 database systems. These include accessing and managing data objects, maintaining databases automatically by taking advantage of autonomic capabilities, and protecting data using access control techniques. First Steps also points you to additional sources of information about DB2 database systems and its features.

The [Control Center](#) is set of tools that you can use to manage and administer your data servers and databases. The [Command Line Processor \(CLP\)](#) is a text-based interface that you can use to run DB2 commands, SQL statements, and database utilities. These interfaces are included with the IBM Data Server Client.

In addition to the CLP and the Control Center, you may want use the data server administrator tool, a Web-based application to manage your DB2 data servers. It helps you maintain required levels of performance by reducing the time to resolve problems and ultimately avoid problems altogether. Further information on how to obtain the data server administrator tool is described in the [Database Administration](#) section of First Steps.

Details on all product features and licensing terms included with DB2 database products are available in the [DB2 Version 9.5 product licensing information technote](#).

First Steps helps you perform the following tasks:

- ◆ [Create the SAMPLE database](#)
- ◆ [Create your own database](#)
- ◆ [View and administer your databases](#)
- ◆ [Create an application using various development environments](#), including the data server developer tool, IBM Rational development tools, and Microsoft® Visual Studio 2005

Done

__21. If the *DB2 First Steps* dialog appears then close it, we don't need the first steps for the class.

__22. Click the **Exit** link to close the window.

__23. Restart the computer.

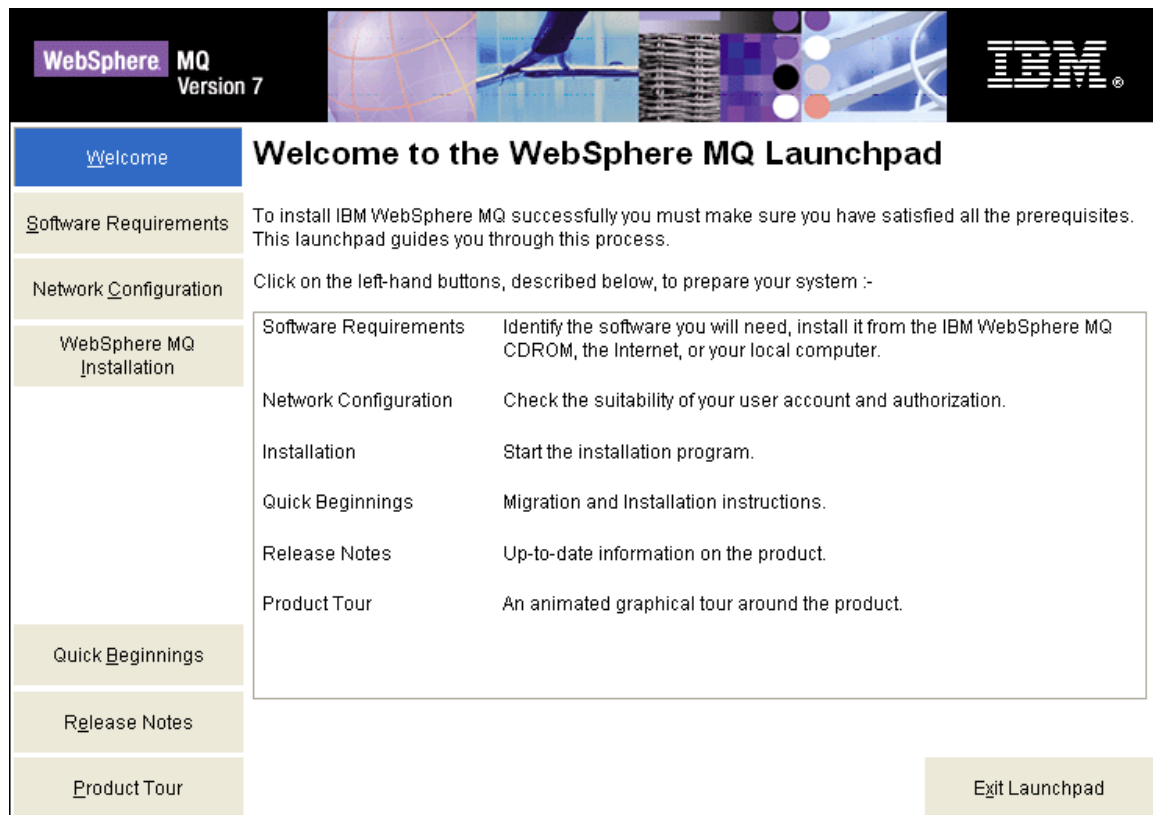
DB2 Enterprise Server Edition v9.5 installation is completed.

Part 9 - Installing WebSphere MQ v7.0 Trial

Note: This is a trial version and should not be installed more than 60 days before the class.

__1. Login as a user with local administrative rights.

__2. Run **Setup.exe** from the **C:\Software\WebSphere MQ v7.0 Trial** folder. The **WebSphere MQ Launchpad** should open up.

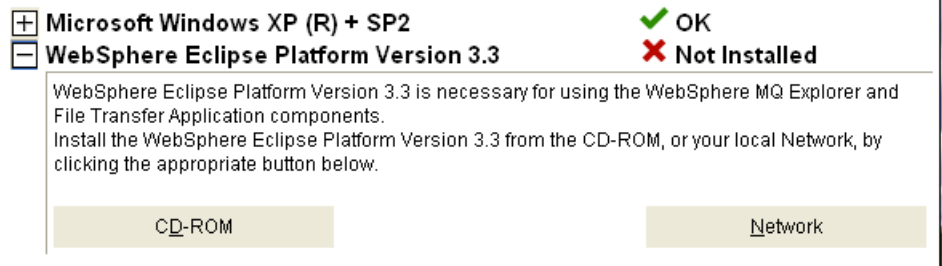


__3. Click on **Software Requirements** in the navigation bar.

__4. You should see a red **X** and the **Not Installed** message next to **WebSphere Eclipse Platform Version 3.3**

__5. To install **WebSphere Eclipse Platform Version 3.3**, expand it by clicking on the + sign next to it.

__6. Click on the **CD-ROM** button.



__7. Leave **English** selected in the **Select Setup Language** pop-up window and click **OK**.

__8. Click **Next** in the **Welcome** window.

__9. Accept the license agreement and press the **Next** button.

__10. Leave the default destination folder and click **Next**.

__11. In the **Ready to Install WebSphere Eclipse Platform** window click **Install**.

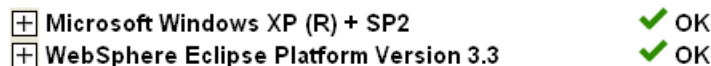
__12. The installation will take a few minutes. Once it is complete press the **Finish** button.

__13. Now that you've installed the pre-requisite software for installing WebSphere MQ, click the **Refresh** button on the software requirements page of the **WebSphere MQ Launchpad**. It should show that all software requirements are satisfied.

Software Requirements for WebSphere MQ on Windows XP

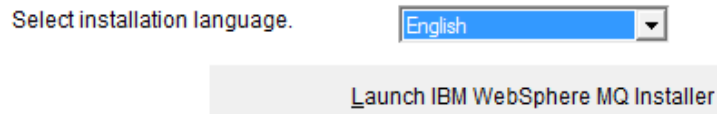
The following software is required for a full install. If you are only installing selected components on this system, refer to the installation instructions for prerequisite software.

Click on the plus (+) buttons below to expand the details on each item's status.



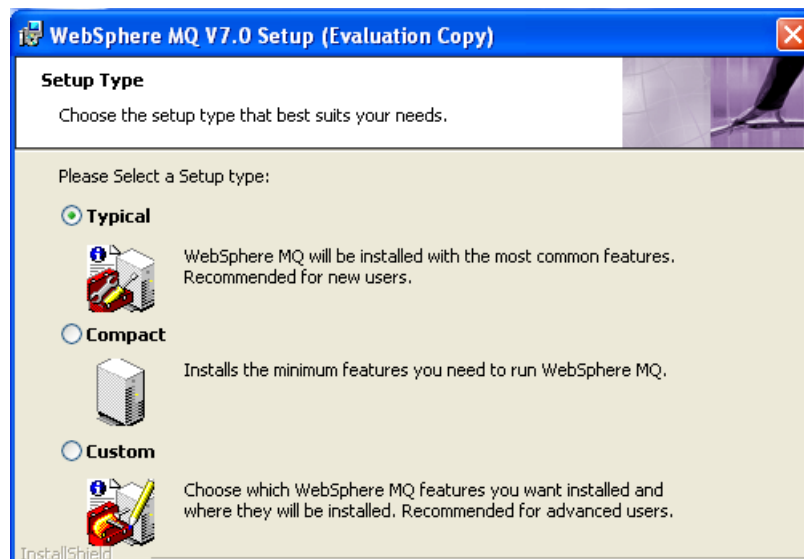
__14. Now proceed to installing WebSphere MQ by clicking on **WebSphere MQ Installation** on the left menu.

__15. Click on the **Launch IBM WebSphere MQ Installer** button.



__16. Accept the license agreement and press the **Next** button.

__17. Leave **Typical** selected and click **Next**.



__18. Click the **Install** button to begin the installation.

__19. The installation will take several minutes. Once it is complete press the **Finish** button.

__20. The installation program will open up the **Welcome to the Prepare WebSphere MQ Wizard** window. Click **Cancel**.

__21. Confirm that you want to cancel the wizard by clicking the **OK** button.

__22. Restart the computer.

Installation verification of WebSphere MQ v7.0 Trial

__1. Login as the same user you used to install WebSphere MQ.

__2. You should see an icon in your system tray with a green icon which indicates that WebSphere MQ is running.



Note: If you are installing to Windows Vista you may not see this icon.

__3. To verify the installation was successful, open a command prompt by selecting Start → Programs → Accessories → Command Prompt.

Note: If you are installing on Windows Vista you must right click the command prompt shortcut and select **Run as administrator** or you will not be able to execute the next command.

__4. Enter The following command:

crtmqm TESTQM

__5. You should see the following message. If you get an error that the command is not recognized you have not rebooted the machine after installation.

```
CA Command Prompt
Microsoft Windows XP [Version 5.1.2600]
(C) Copyright 1985-2001 Microsoft Corp.

C:\Documents and Settings\Student>crtmqm TESTQM
There are 90 days left in the trial period for this copy of WebSphere MQ.
WebSphere MQ queue manager created.
Creating or replacing default objects for TESTQM.
Default objects statistics : 61 created. 0 replaced. 0 failed.
Completing setup.
Setup completed.

C:\Documents and Settings\Student>_
```

__6. Close the command prompt window.

You have successfully installed WebSphere MQ v7.0 Trial.