

# **WA1516 Business Process Modeling**

## **Classroom Setup Guide**

**Web Age Solutions Inc.**

## Table of Contents

Part 1 - Minimum Hardware Requirements .....	3
Part 2 - Minimum Software Requirements .....	3
Part 3 - Software Provided.....	3
Part 4 - Important Ghosting or Imaging Information.....	4
Part 5 - Instructions.....	4
Part 6 - Installing JAVA 6 SP 5.....	5
Part 7 - Verification of Eclipse STP.....	6
Part 8 - WebSphere Business Modeler V6.1.1 Setup.....	7

## Part 1 - Minimum Hardware Requirements

- 2 GHz Pentium IV
- 2 GB RAM minimum
- 10 GB in the hard disk
- USB port
- Internet connection, some lab exercises require internet access.

## Part 2 - Minimum Software Requirements

- Windows 2004 SP4 or Windows XP SP2
- Adobe Acrobat Reader
- Zip extraction utility
- One of the following web browsers
  - Internet Explorer
  - Firefox
- IBM WebSphere Business Modeler Advanced Edition V6.1.1 \*
- Java 6 SP 5 \*
- Eclipse STP \*

\* - indicates software provided as part of the courseware.

## Part 3 - Software Provided

You will receive in a USB memory stick, in a DVD or by downloading from an FTP site the following file:

- **WA1516.ZIP**

All other software listed under Minimum Software Requirements is either commercially licensed software that you must provide or software that is freely available off the Internet.

## Part 4 - Important Ghosting or Imaging Information

Some of the software installed for this course will not function after changing the computer hostname. As such, cloning or imaging should not be used on a fully installed system.

You can save time by extracting the contents of the USB memory stick to C:\ on a clean OS install (no other software installed) and then imaging that hard drive. After restoring the image to the other computers and changing the hostnames, you can then install the software on each computer individually by following the instructions that are detailed later in this document.

## Part 5 - Instructions

\_\_1. From a USB memory stick, extract the **WA1516.ZIP** file to C:\

\_\_2. Review that the following folders were created:

- **C:\eclipse**
- **C:\LabFiles**
- **C:\Software\WBM6.1.1**

\_\_3. Review that the following files were created:

- C:\Software\jre-6u5-windows-i586-p-s.exe

## Part 6 - Installing JAVA 6 SP 5

- \_\_1. From **c:\Software** launch **jre-6u5-windows-i586-p-s.exe**
- \_\_2. At the *Welcome* window click **Accept**.

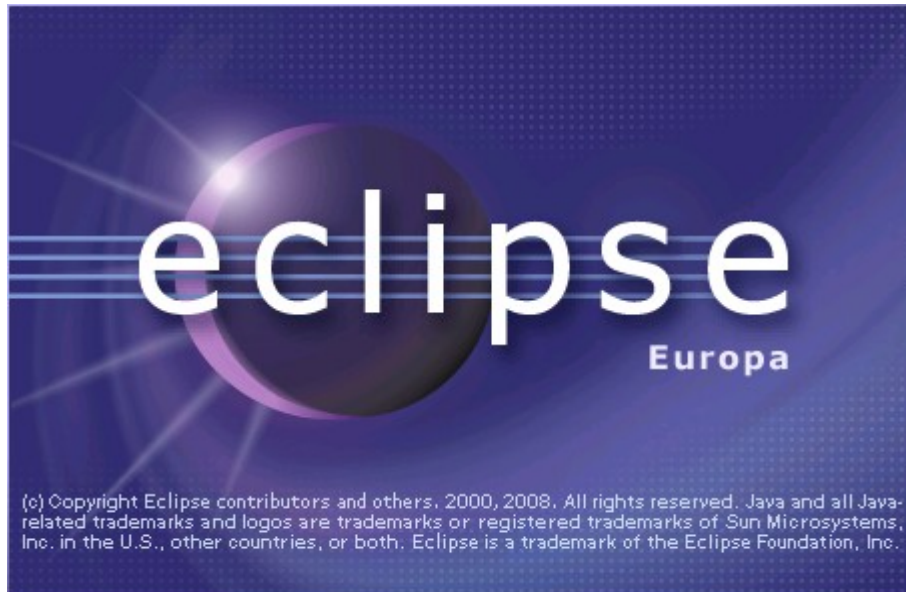


The setup will start, wait until the product finish installing.

- \_\_3. Click **Finish**.

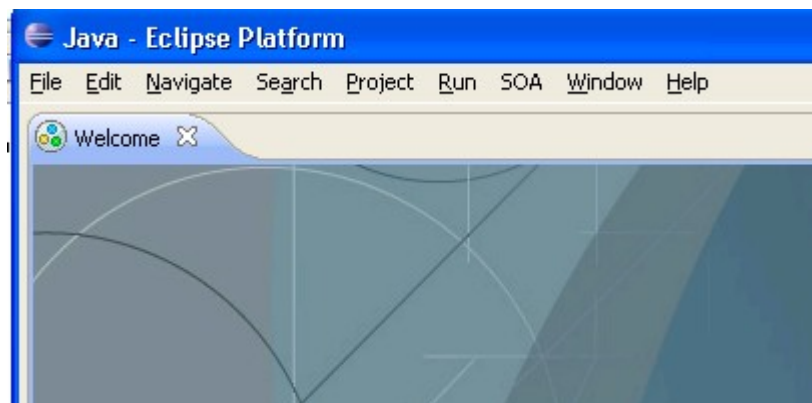
## Part 7 - Verification of Eclipse STP

\_\_1. Run `C:\eclipse\eclipse.exe`



\_\_2. A Workspace Launcher dialog will appear. Leave the default workspace and click **OK**.

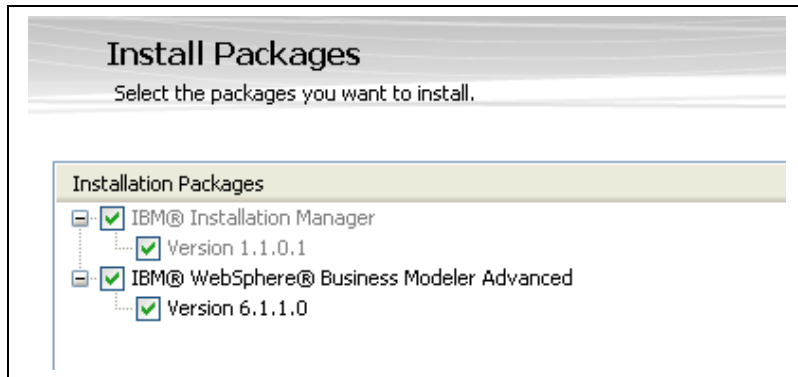
Eclipse will open.



\_\_3. Close Eclipse.

## Part 8 - WebSphere Business Modeler V6.1.1 Setup

- \_\_1. Log in to Windows as a user having administration rights.
- \_\_2. Navigate to the folder **C:\Software\WBM6.1.1**
- \_\_3. Double click on the **launchpad.exe** file to start the installation.
- \_\_4. Click **Install IBM WebSphere Business Modeler Advanced V6.1.1** link.



- \_\_5. Leave all Installation Packages selected as shown above and click **Next**.
- \_\_6. Accept the license agreement and click **Next**.

## Install Packages

Select a location for the shared resources directory and a location for Installation Manager.


Install > Licenses > **Location** > Features > Summary > |

When you install packages, files are stored in two locations:

- 1) The shared resources directory - resources that can be shared by multiple packages.
- 2) The installation directory - any resources that are unique to the package that you are installing.

Important: You can only select the shared resources directory the first time you install a package with the IBM Installation Manager because it must have adequate space for the shared resources of future packages.

Shared Resources Directory:

 Once installed, IBM Installation Manager will be used to install, update, modify, manage and uninstall your packages.

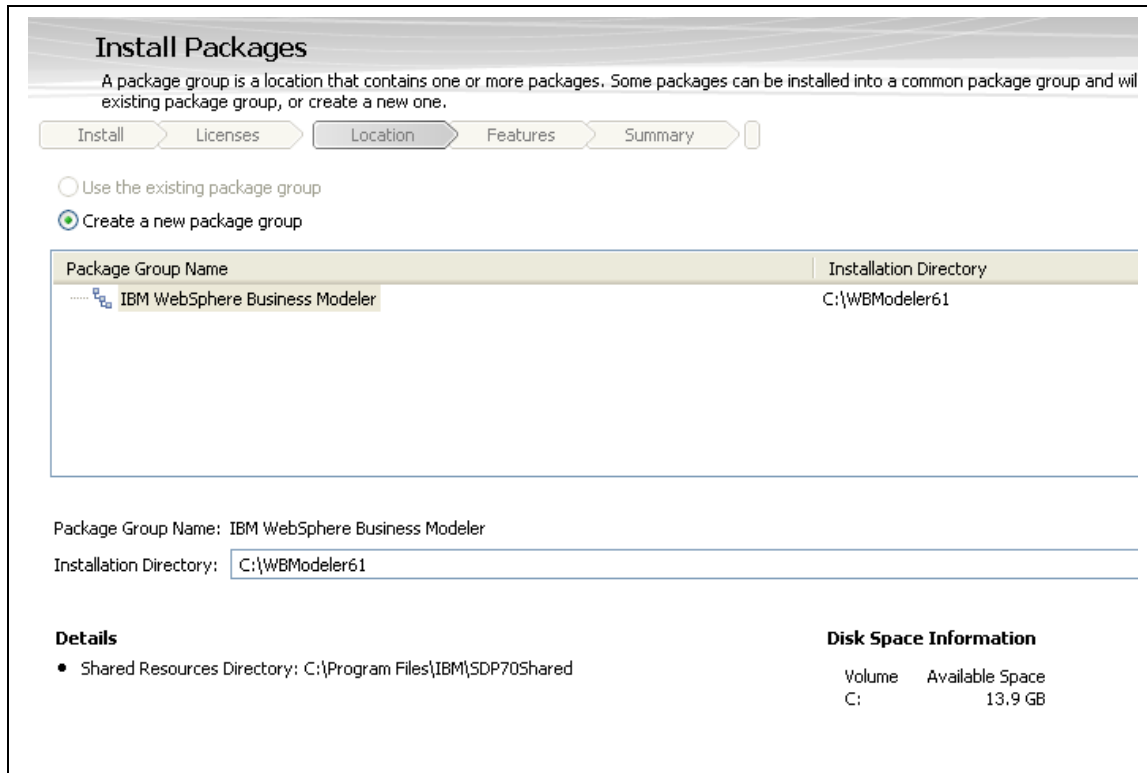
Installation Manager Directory:

### Disk Space Information

Volume	Available Space
C:	13.9 GB

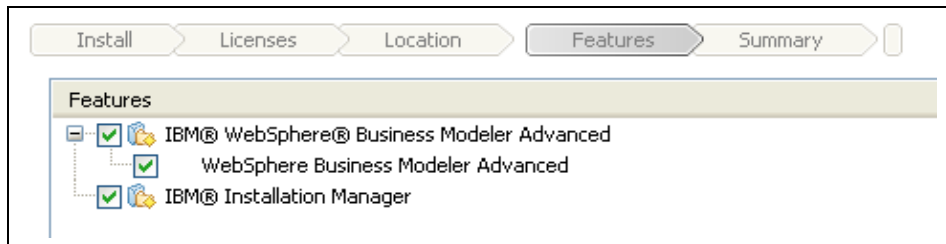
7. Leave the default for *Shared Resources Directory* and *Installation Manager Directory* and click **Next**.

8. For the Installation Directory change it to **C:\WBModeler61**



9. Click **Next**.

10. Accept **English** as the language and press **Next**.



11. Under the Features list, leave all selected as shown above and click **Next**.

**Install Packages**  
Review the summary information. Click Back to make changes, or click Install.

Install > Licenses > Location > Features > **Summary**

**Target Location**

Package Group Name	Installation Directory
IBM WebSphere Business Modeler	C:\WBModeler61
IBM Installation Manager	C:\Program Files\IBM\Installation Manager\eclipse

Shared Resources Directory: C:\Program Files\IBM\SDP705shared

**Features**

Feature
<input checked="" type="checkbox"/> IBM® WebSphere® Business Modeler Advanced
<input checked="" type="checkbox"/> WebSphere Business Modeler Advanced
<input checked="" type="checkbox"/> IBM® Installation Manager

**Environment**  
English

**Disk Space Information**

Drive	Total Available Space
C:	13.9 GB

Total Download Size: 749.5 MB  
Total Installation Size: 1.0 GB

**Repository Information**  
Files will be retrieved from the following locations:

Repository	Download Size
C:\Software\Business Modeler Software 6.1.1\ModelerIM_6.1.1-TRIAL	673.4 MB
C:\Software\Business Modeler Software 6.1.1\ModelerIM_6.1.1-TRIAL\IM_win32	31.9 MB
C:\Documents and Settings\wasadmin\Local Settings\Temp\installerRepository62956.tmp	44.2 MB

< Back   Next >   **Install**

\_\_12. In the Summary page, click **Install**. The installation will start and will take some minutes.

Eventually the setup will finish.

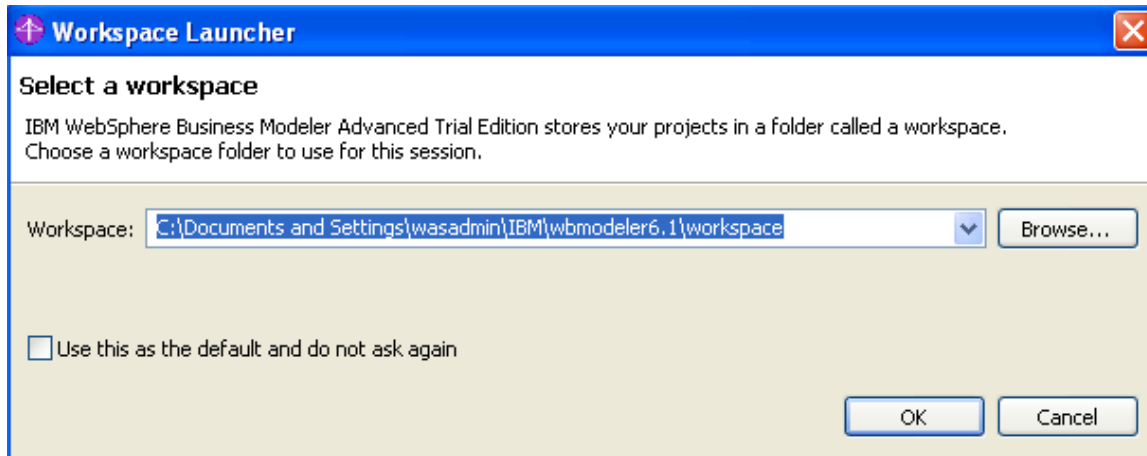
**Install Packages**

Success! The installation was successful. [View Log File](#)

The following package was installed into package group IBM WebSphere Business Modeler:    Which of the following packages would you like to start?

<input checked="" type="checkbox"/> IBM® WebSphere® Business Modeler Advanced	<input checked="" type="radio"/> IBM WebSphere Business Modeler Advanced
<input checked="" type="checkbox"/> IBM® WebSphere® Business Modeler Advanced	<input type="radio"/> None
<input checked="" type="checkbox"/> WebSphere Business Modeler Advanced	

\_\_13. Leave **IBM WebSphere Business Modeler Advanced** selected and click **Finish**.



\_\_14. Leave the default Workspace and click **OK**.

\_\_15. Once Business Modeling starts close it.

\_\_16. Close all.

\_\_17. Restart the machine.

\_\_18. Log in to Windows as a user having administration rights.

Congratulations. The installation of WA1516 Business Process Modeling has been completed.