

WA1477 Mastering Service Oriented Analysis and Design Training

Classroom Setup Guide

Web Age Solutions Inc.

Table of Contents

Part 1 - Minimum Hardware Requirements	3
Part 2 - Minimum Software Requirements	3
Part 3 - Software Provided.....	3
Part 4 - Important Ghosting or Imaging Information.....	4
Part 5 - Instructions.....	4
Part 6 - Installing JAVA 6 SP 5.....	5
Part 7 - Verification of Eclipse STP.....	6
Part 8 - WebSphere Business Modeler V6.1.1 Setup.....	7
Part 9 - Installing WebSphere Integration Developer v6.0.2.....	12
Part 10 - Verification of the installation of WID 6.0.2.....	25

Part 1 - Minimum Hardware Requirements

- 2 GHz Pentium IV
- 2 GB RAM minimum, 3 GB or more recommended
- 20 GB in the hard disk
- USB port
- CD-ROM

Part 2 - Minimum Software Requirements

- Adobe Acrobat Reader
- Zip extraction utility
- One of the following web browsers:
 - Internet Explorer 6
 - Firefox 2.x
- IBM WebSphere Business Modeler Advanced Edition V6.1.1 *
- WebSphere Integration Developer v6.0.2 *
- Java 6 SP 5 *
- Eclipse STP *

* - indicates software provided as part of the courseware.

Part 3 - Software Provided

You will receive the following:

- **WA1477.ZIP (in USB memory stick or DVD)**
- **WebSphere Integration Developer v6.0.2 (6 CDs)**

All other software listed under Minimum Software Requirements is either commercially licensed software that you must provide or software that is freely available off the Internet.

Part 4 - Important Ghosting or Imaging Information

Some of the software installed for this course will not function after changing the computer hostname. As such, cloning or imaging should not be used on a fully installed system.

You can save time by extracting the contents of the USB memory stick to C:\ on a clean OS install (no other software installed) and then imaging that hard drive. After restoring the image to the other computers and changing the hostnames, you can then install the software on each computer individually by following the instructions that are detailed later in this document.

Part 5 - Instructions

__1. Extract the **WA1477.ZIP** file to C:\

__2. Copy the contents of the 6 CD's of **WebSphere Integration Developer v6.0.2** to **C:\Software\WID 6.0.2**

__3. Review that the following folders were created:

- **C:\eclipse**
- **C:\LabFiles**
- **C:\Software\WBM6.1.1**
- **C:\ Software\WID 6.0.2**

__4. Review that the following files were created:

- **C:\Software\jre-6u5-windows-i586-p-s.exe**

Part 6 - Installing JAVA 6 SP 5

- __1. From **c:\Software** launch **jre-6u5-windows-i586-p-s.exe**
- __2. At the *Welcome* window click **Accept**.

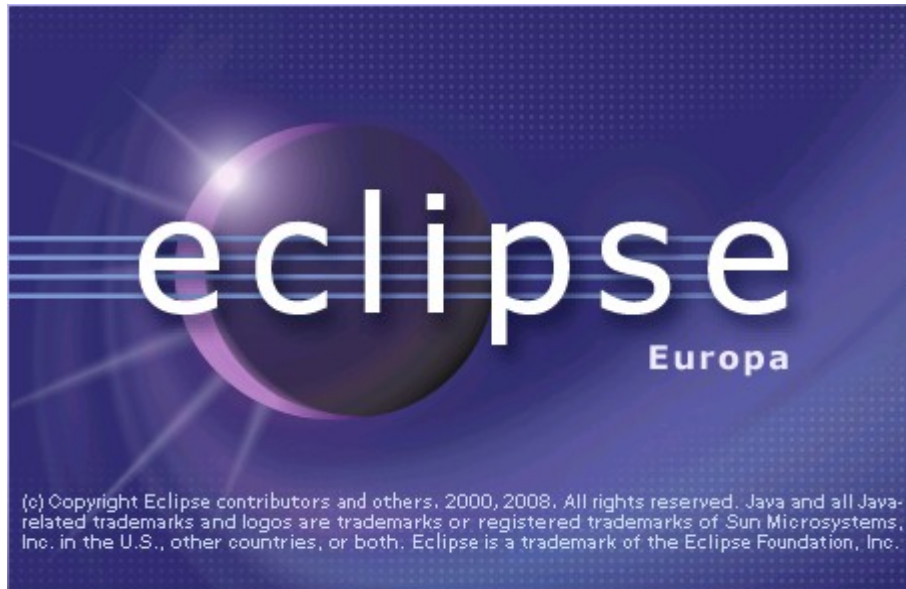


The setup will start, wait until the product finish installing.

- __3. Click **Finish**.

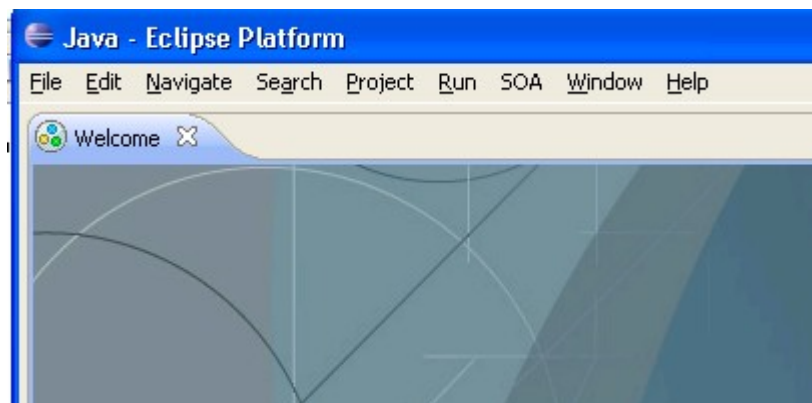
Part 7 - Verification of Eclipse STP

__1. Run `C:\eclipse\eclipse.exe`



__2. A Workspace Launcher dialog will appear. Leave the default workspace and click **OK**.

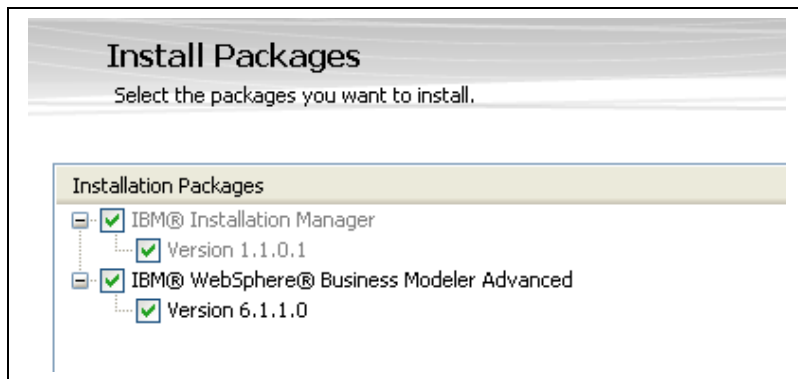
Eclipse will open.



__3. Close Eclipse.

Part 8 - WebSphere Business Modeler V6.1.1 Setup

- __1. Log in to Windows as a user having administration rights.
- __2. Navigate to the folder **C:\Software\WBM6.1.1**
- __3. Double click on the **launchpad.exe** file to start the installation.
- __4. Click **Install IBM WebSphere Business Modeler Advanced V6.1.1** link.



- __5. Leave all Installation Packages selected as shown above and click **Next**.
- __6. Accept the license agreement and click **Next**.

Install Packages

Select a location for the shared resources directory and a location for Installation Manager.


Install > Licenses > **Location** > Features > Summary > |

When you install packages, files are stored in two locations:

- 1) The shared resources directory - resources that can be shared by multiple packages.
- 2) The installation directory - any resources that are unique to the package that you are installing.

Important: You can only select the shared resources directory the first time you install a package with the IBM Installation Manager because it must have adequate space for the shared resources of future packages.

Shared Resources Directory:

 Once installed, IBM Installation Manager will be used to install, update, modify, manage and uninstall your packages.

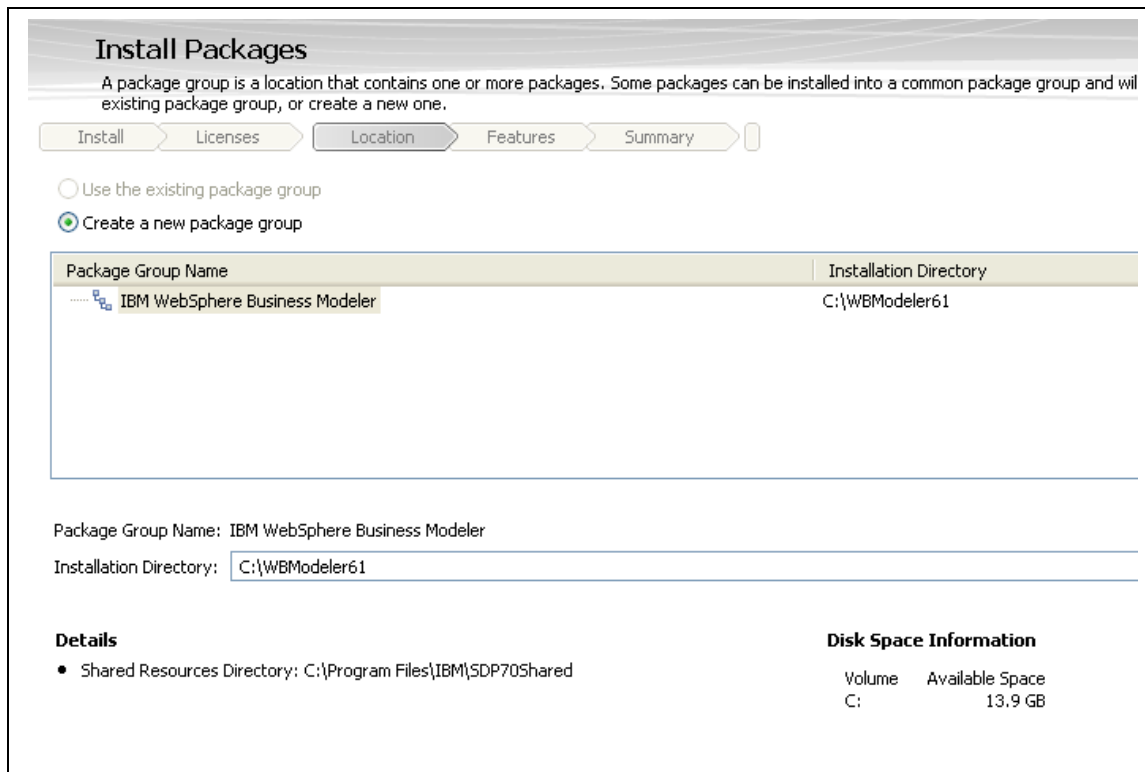
Installation Manager Directory:

Disk Space Information

Volume	Available Space
C:	13.9 GB

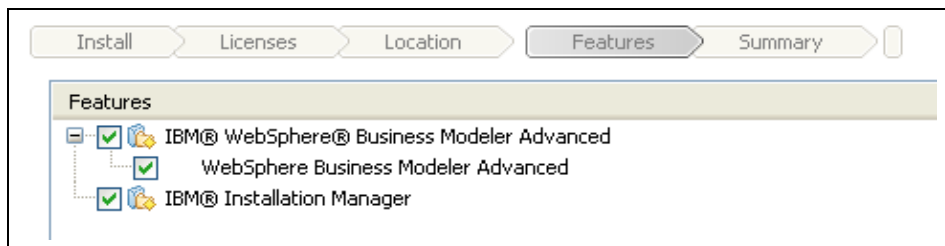
7. Leave the default for *Shared Resources Directory* and *Installation Manager Directory* and click **Next**.

8. For the Installation Directory change it to **C:\WBModeler61**



9. Click **Next**.

10. Accept **English** as the language and press **Next**.



11. Under the Features list, leave all selected as shown above and click **Next**.

Install Packages
Review the summary information. Click Back to make changes, or click Install.

Install > Licenses > Location > Features > **Summary**

Target Location

Package Group Name	Installation Directory
IBM WebSphere Business Modeler	C:\WBModeler61
IBM Installation Manager	C:\Program Files\IBM\Installation Manager\eclipse

Shared Resources Directory: C:\Program Files\IBM\SDP705Shared

Features

Feature
<input checked="" type="checkbox"/> IBM@ WebSphere@ Business Modeler Advanced
<input checked="" type="checkbox"/> WebSphere Business Modeler Advanced
<input checked="" type="checkbox"/> IBM@ Installation Manager

Environment
English

Disk Space Information

Drive	Total Available Space
C:	13.9 GB

Total Download Size: 749.5 MB
Total Installation Size: 1.0 GB

Repository Information
Files will be retrieved from the following locations:

Repository	Download Size
C:\Software\Business Modeler Software 6.1.1\ModelerIM_6.1.1-TRIAL	673.4 MB
C:\Software\Business Modeler Software 6.1.1\ModelerIM_6.1.1-TRIAL\IM_win32	31.9 MB
C:\Documents and Settings\wasadmin\Local Settings\Temp\installerRepository62956.tmp	44.2 MB

< Back Next > **Install**

__12. In the Summary page, click **Install**. The installation will start and will take some minutes.

Eventually the setup will finish.

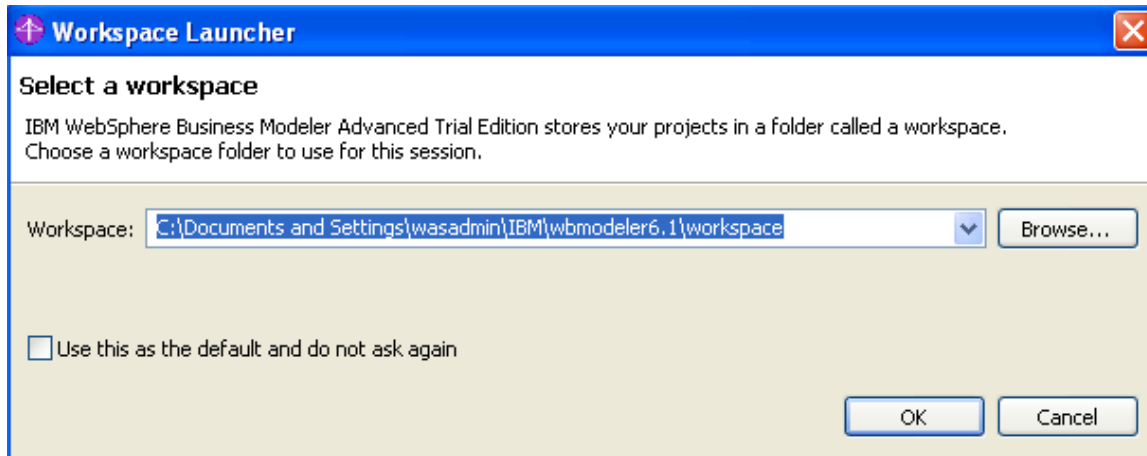
Install Packages

Success! The installation was successful. [View Log File](#)

The following package was installed into package group IBM WebSphere Business Modeler: Which of the following packages would you like to start?

<input checked="" type="checkbox"/> IBM@ WebSphere@ Business Modeler Advanced	<input checked="" type="radio"/> IBM WebSphere Business Modeler Advanced
<input checked="" type="checkbox"/> IBM@ WebSphere@ Business Modeler Advanced	<input type="radio"/> None
<input checked="" type="checkbox"/> WebSphere Business Modeler Advanced	

__13. Leave **IBM WebSphere Business Modeler Advanced** selected and click **Finish**.



__14. Leave the default Workspace and click **OK**.

__15. Once Business Modeling starts close it.

__16. Close all.

__17. Restart the machine.

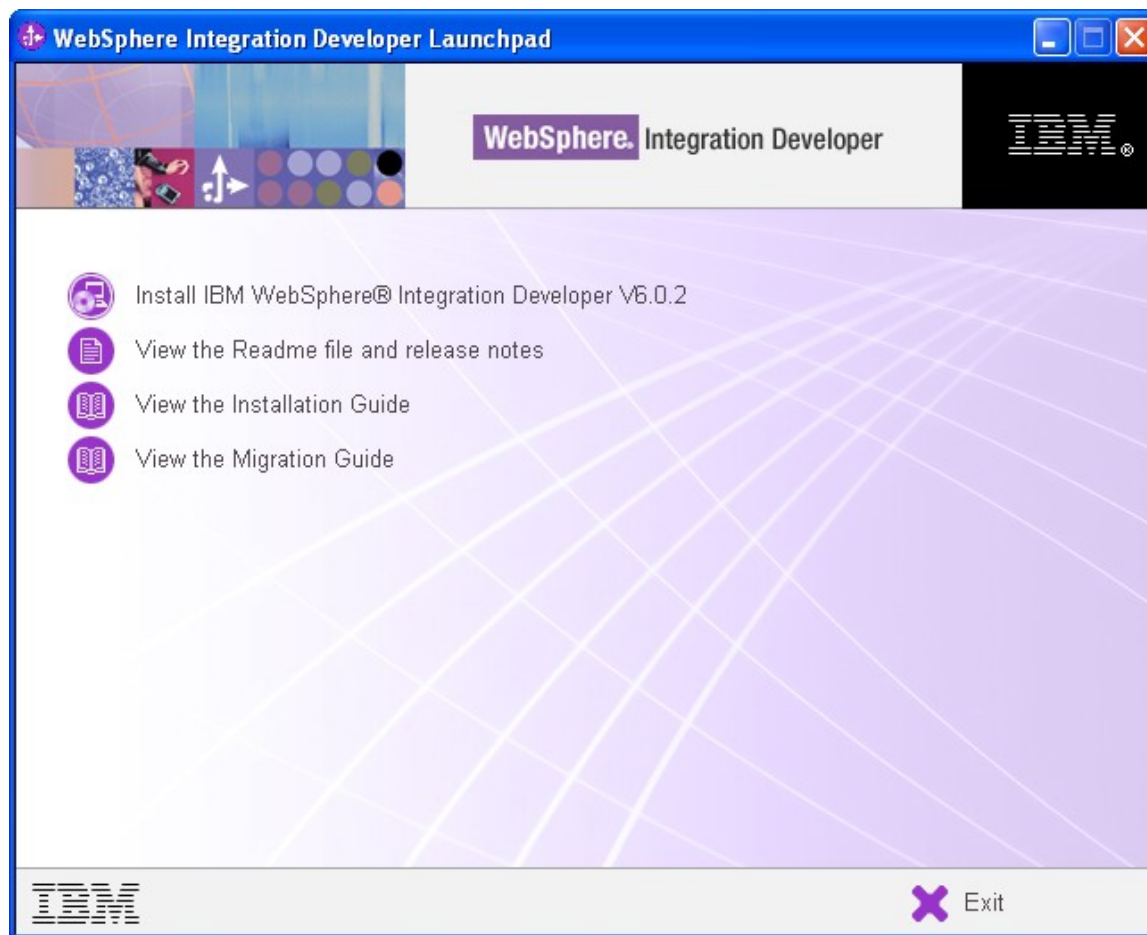
__18. Log in to Windows as a user having administration rights.

Part 9 - Installing WebSphere Integration Developer v6.0.2



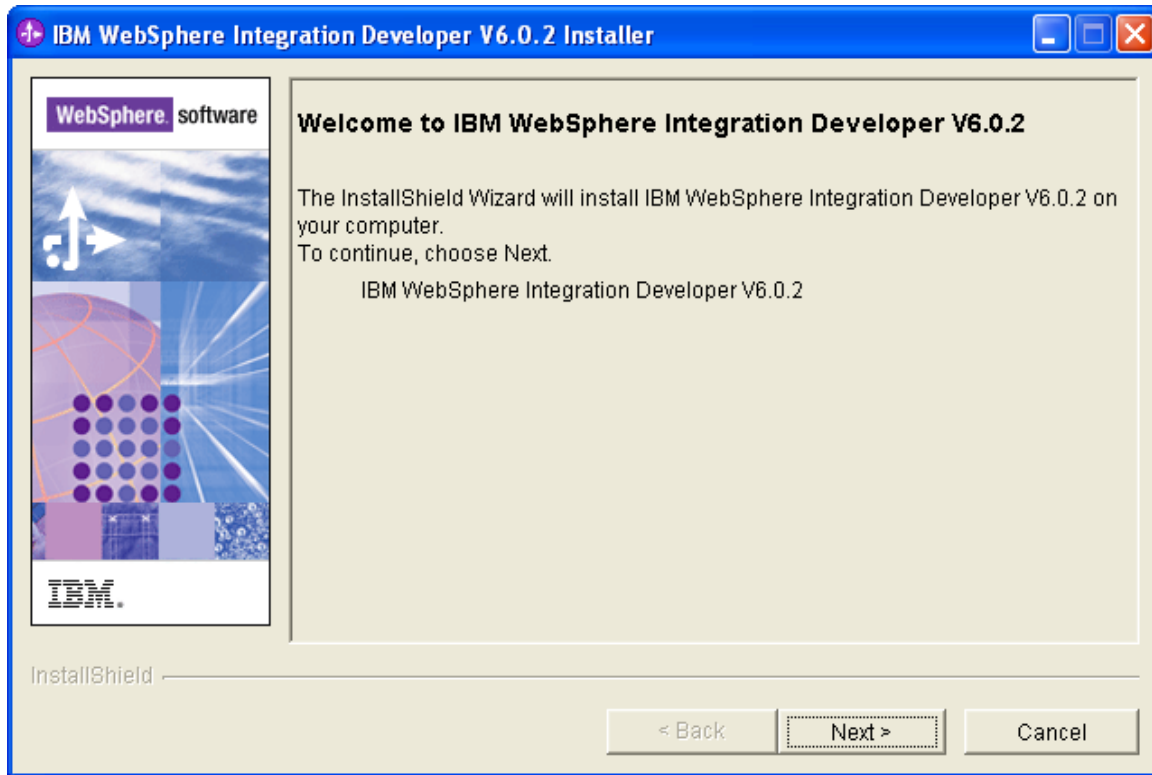
Warning: You cannot use ghosting or disk imaging to install this software. You must install the software on each machine separately. Do not change the computer hostname after this software is installed. Also, do not install this software from a network share. It will only function partially if you do.

__1. From **Software\WID 6.0.2\disk1**, run **launchpad.exe**.

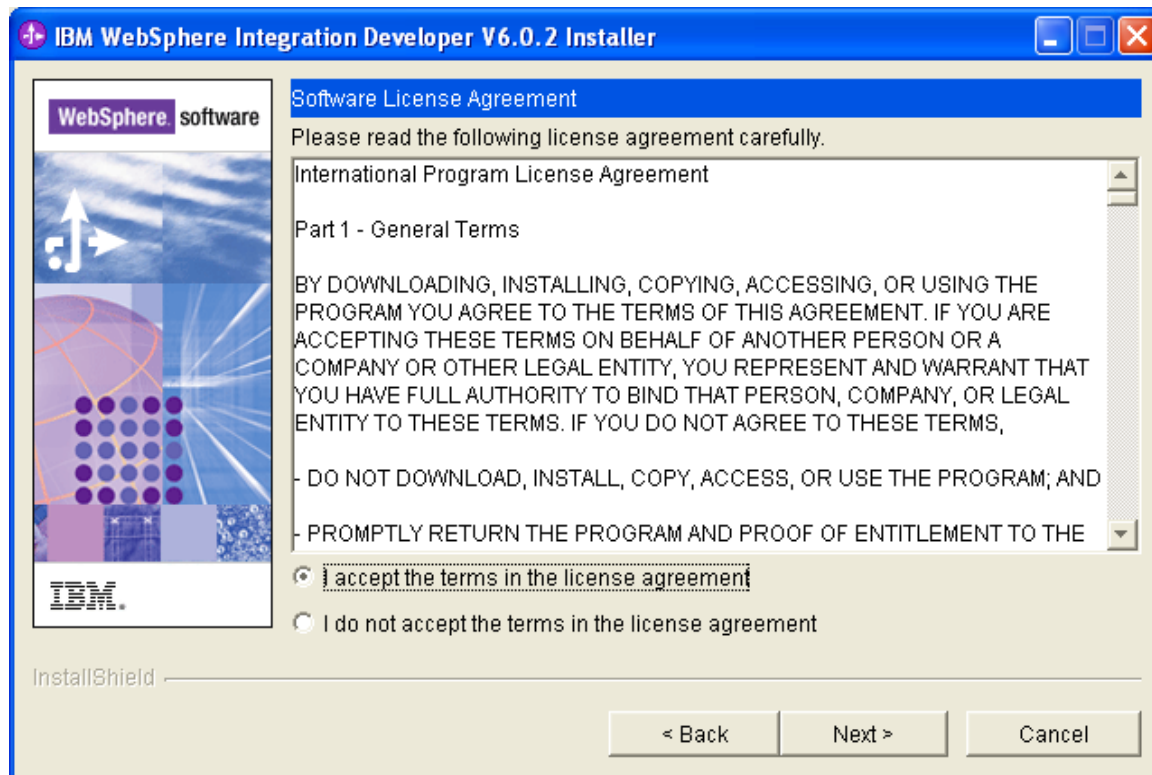


__2. Click on **Install IBM WebSphere Integration Developer V6.0.2**.

3. Click **Next** in the Welcome screen.



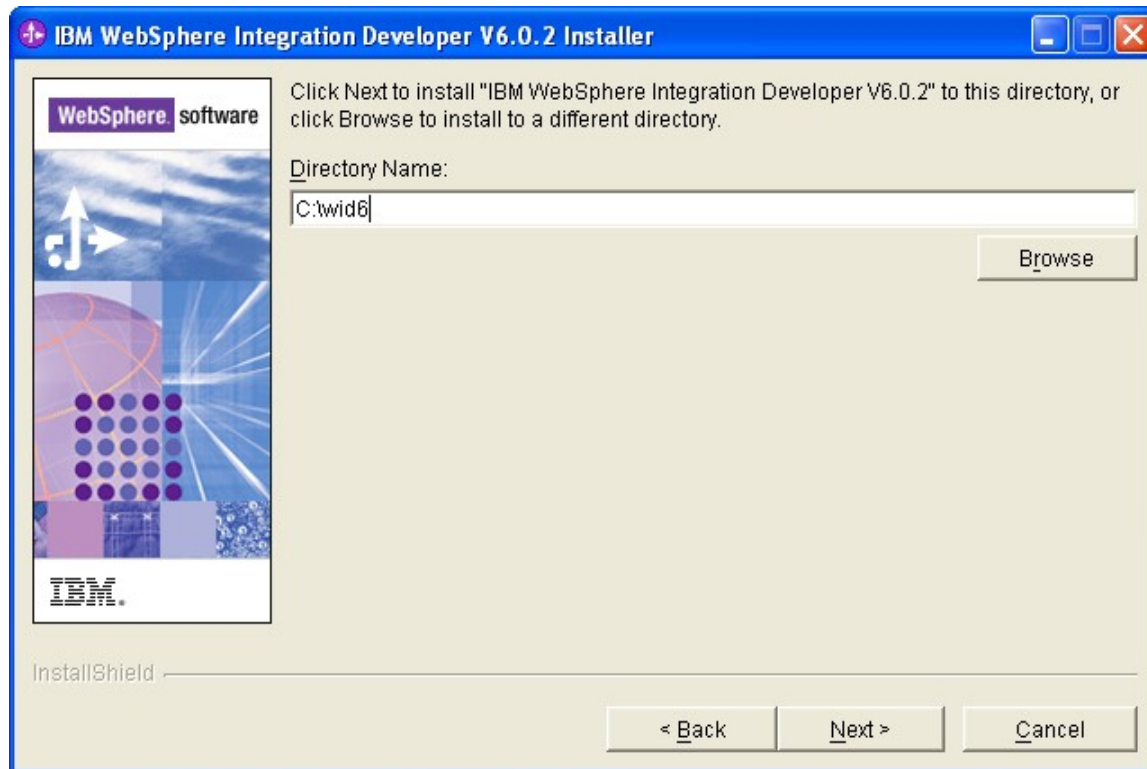
4. Accept the license terms and click **Next**.



__5. Change the installation location to **C:\wid6**

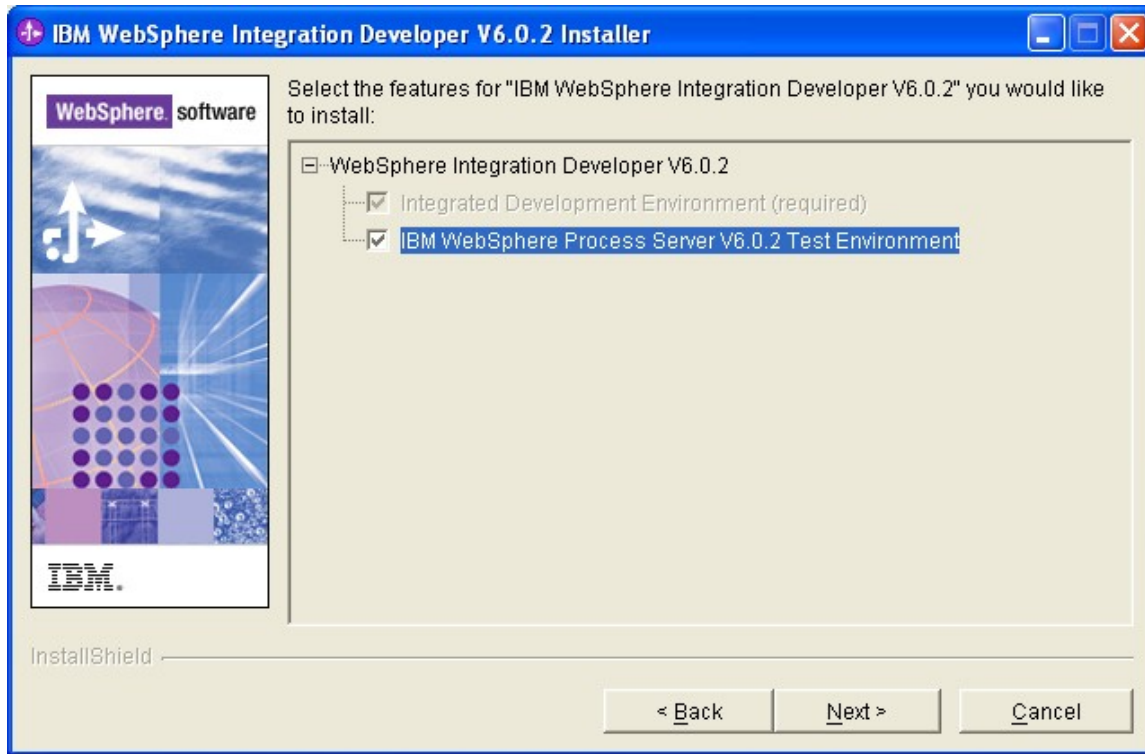


Important: You must make this change. The default installation location is too long and will cause problems with the functionality of the product.

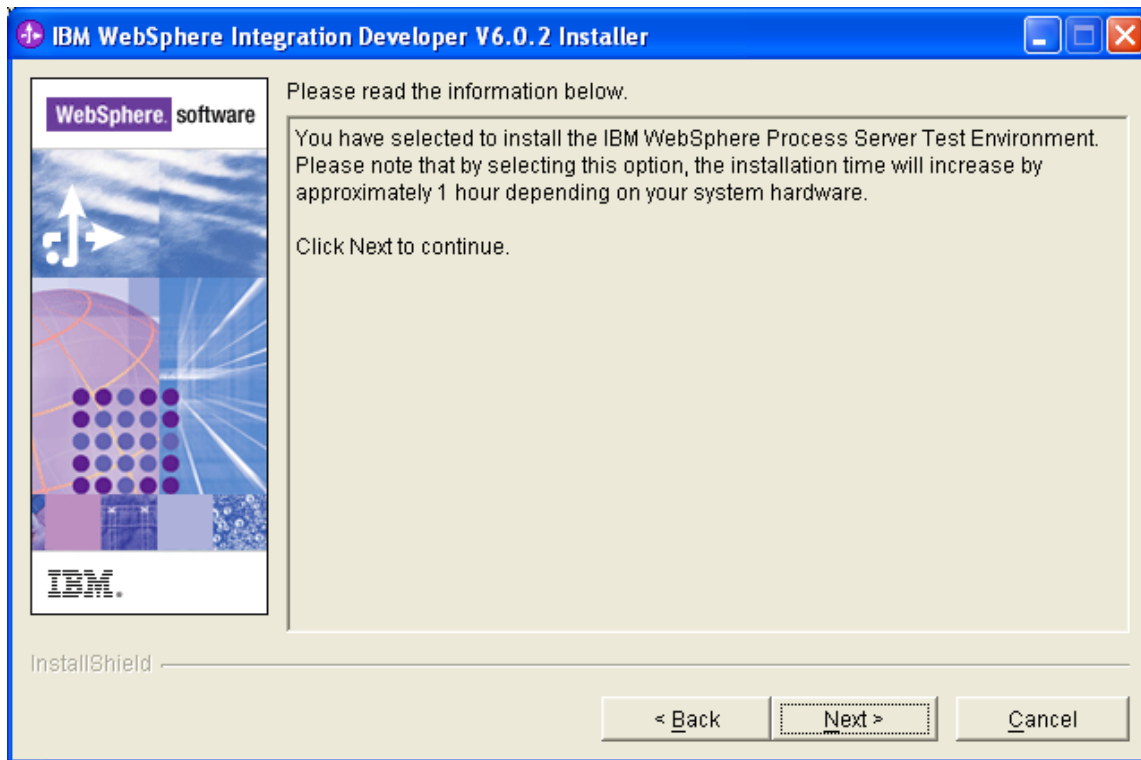


__6. Click **Next**.

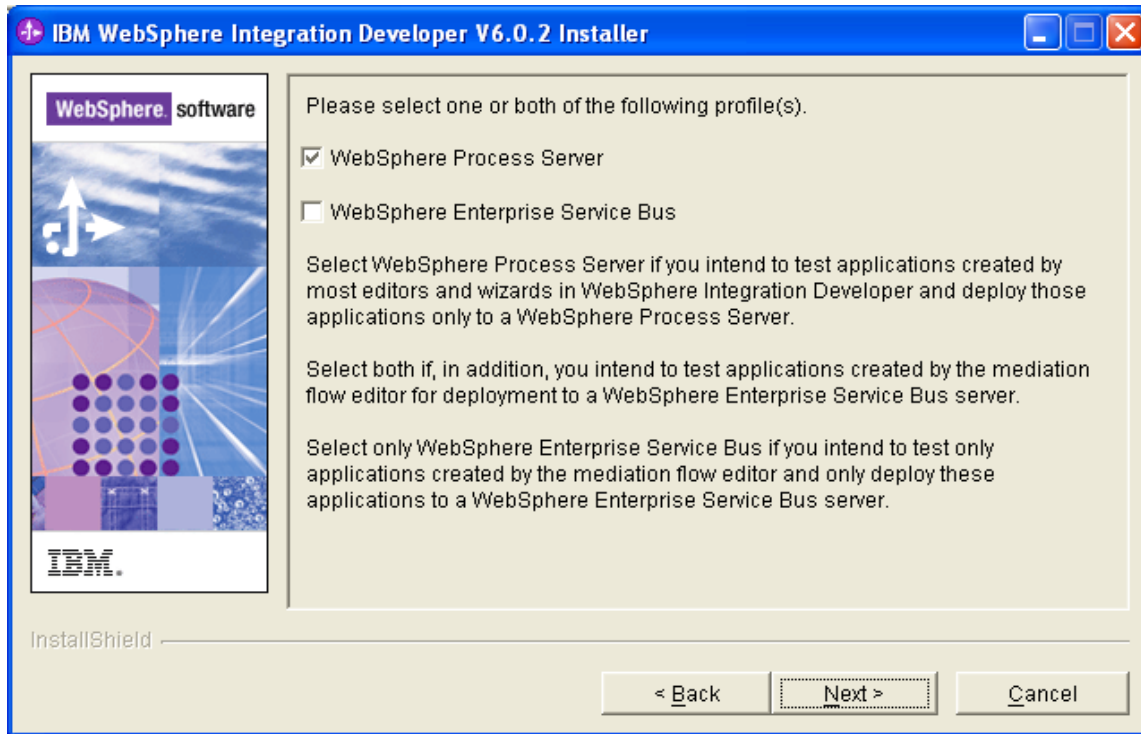
__7. Check the **IBM WebSphere Process Server V6.0.2 Test Environment** and click **Next**.



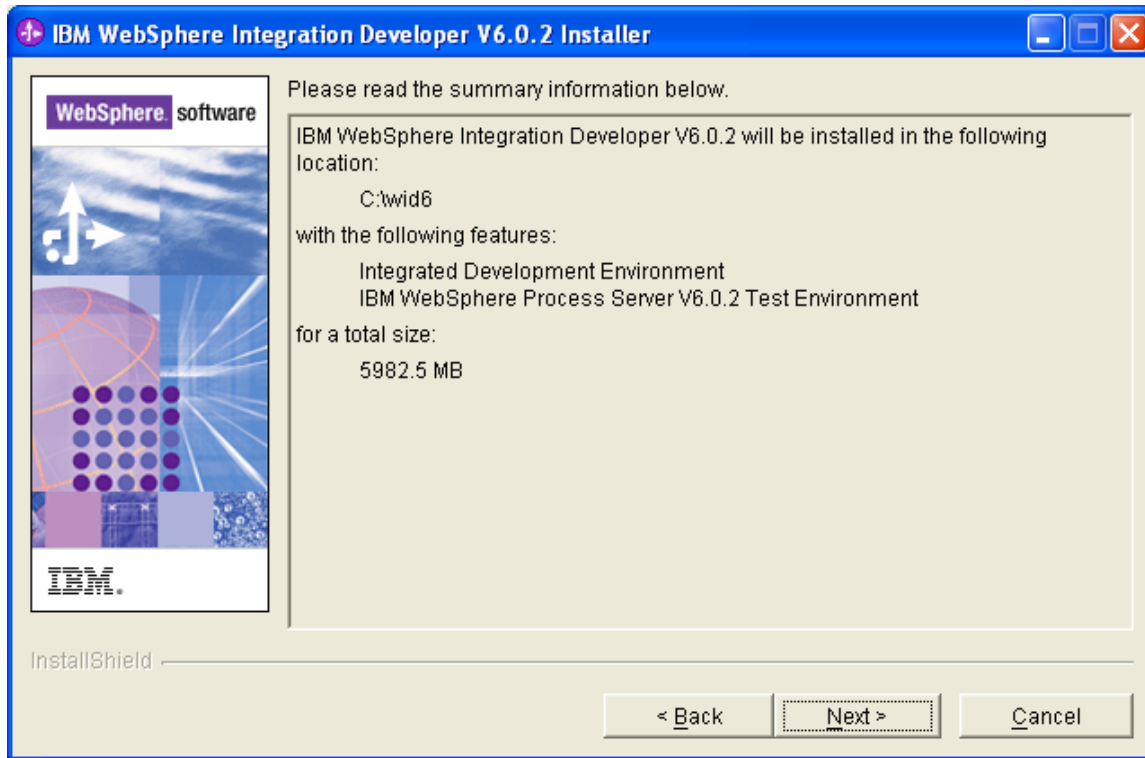
__8. Read the message and click **Next**.



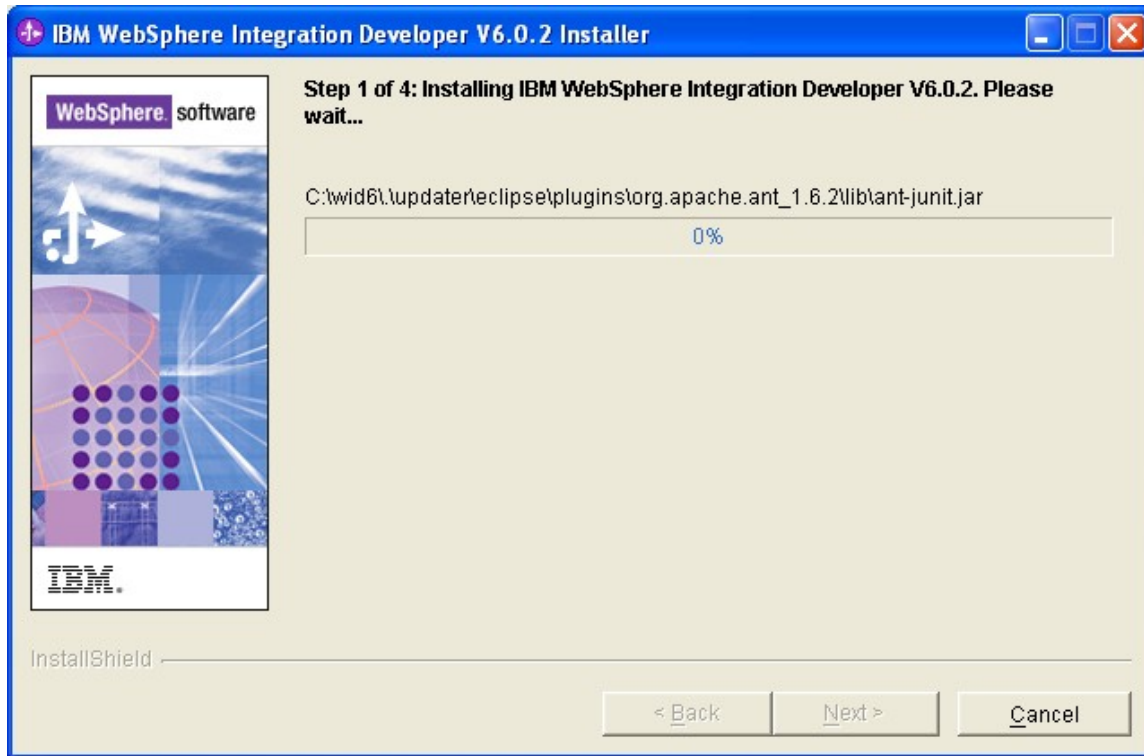
__9. In the following screen, accept the default and press **Next**.



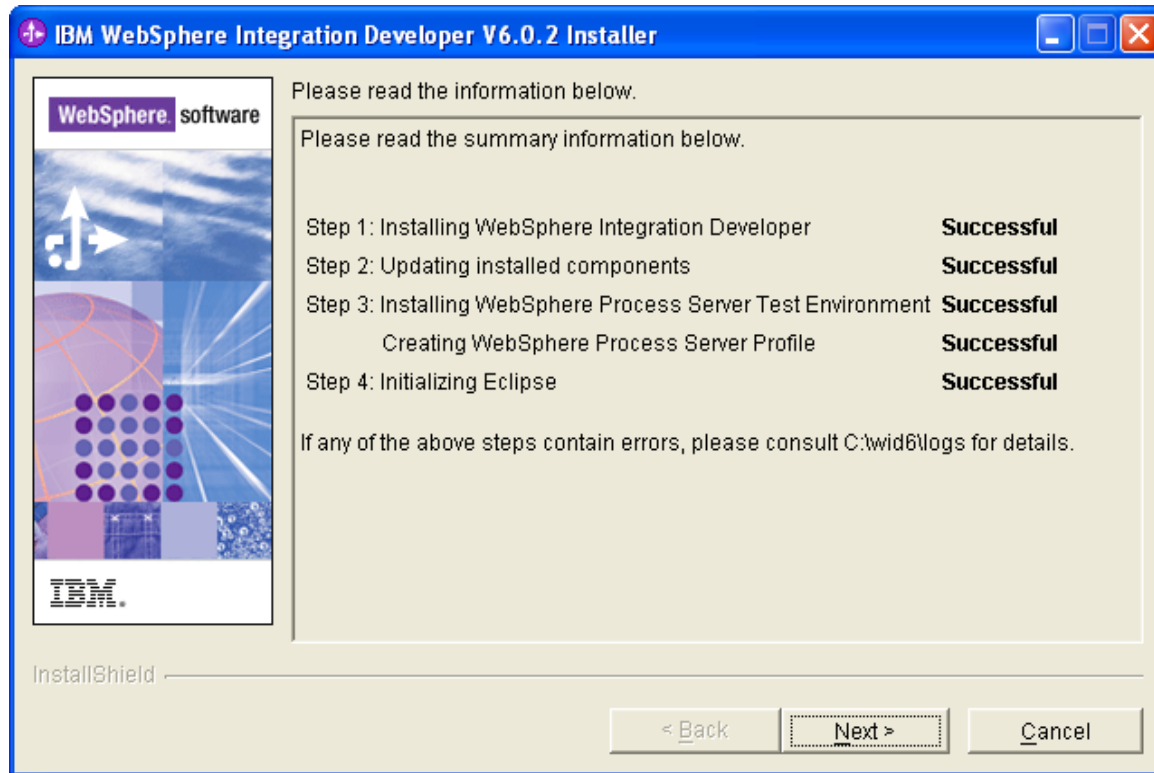
__10. In the summary page, click on **Next**.



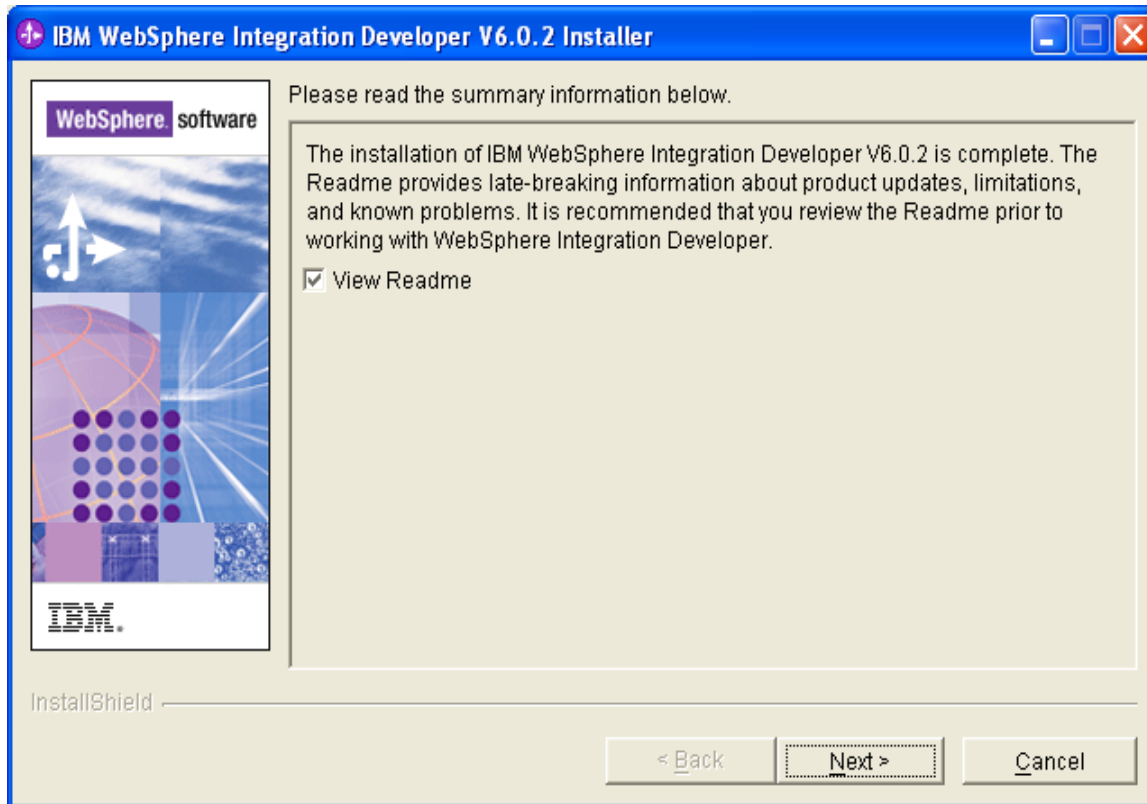
__11. System will begin the installation. Wait for installation to end.



__12. Finally, make sure that you see the following screen and click **Next**.



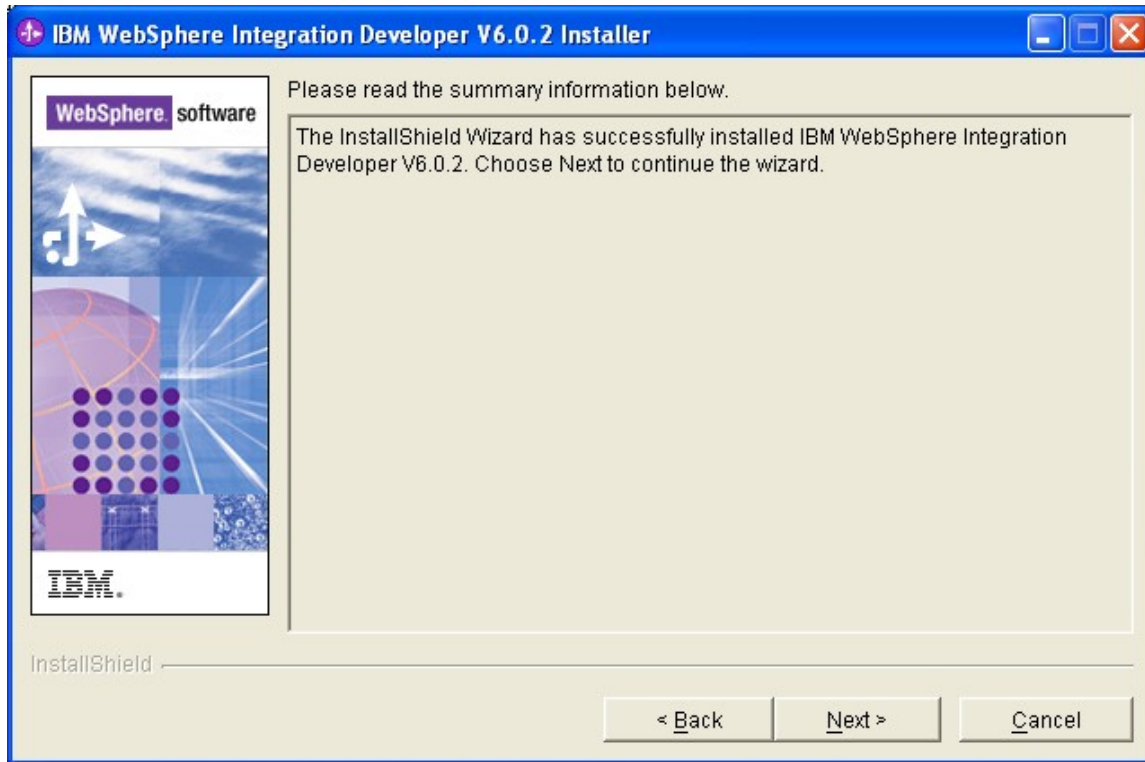
__13. Read the summary information and click **Next**.



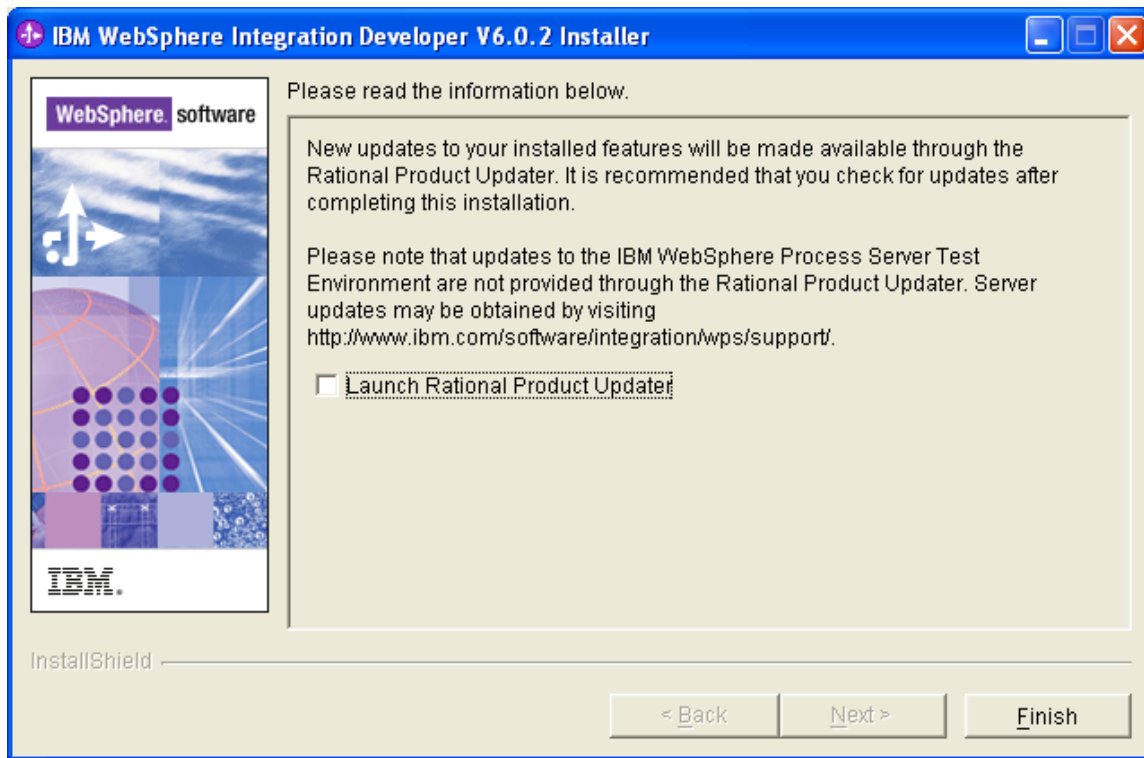
__14. System will open the read me file in a browser. Take a look in the file.

__15. Close the read me file.

__16. Read the summary information and click **Next**.



__17. Uncheck **Launch Rational Product Updater** and click **Finish**.



The installation of WebSphere Integration Developer v6.0.2 (WID v6.0.2) is now complete.

__18. Close all the WebSphere Integration Developer Launchpad windows.

Part 10 - Verification of the installation of WID 6.0.2

Quick Verification

Run these quick verification steps on all machines.

__1. Open **C:\wid6\logs\wid_v602_install.log**.

__2. Go to the end of the file. Make sure that you see:

*(3-May-2007 4:00:31 PM), Install, com.ibm.wstools.WBISStatusCondition, dbg,
Status:INSTCONFSUCCESS*

*(3-May-2007 4:00:52 PM), Install, com.ibm.wstools.AddLogEntryWizardAction, MESSAGE,
Installation Complete*

__3. Open **C:\wid6\logs\wps_v602_install_err.log**.

__4. Make sure that this error log file is empty.

__5. Open **C:\wid6\logs\wps_v602_create_wps_profile.log**.

__6. Scroll down to the very end. Make sure that you see these lines:

*(3-May-2007 3:50:56 PM), Install,
com.ibm.ws.install.ni.ismp.actions.ISMPLogSuccessMessageAction, msg1,
INSTCONFSUCCESS*

*(3-May-2007 3:50:56 PM), Install,
com.ibm.ws.install.ni.ismp.actions.ISMPFileSystemManipulationWizardAction, err, The
system cannot find the file specified.*

*(3-May-2007 3:50:56 PM), Install,
com.ibm.ws.install.ni.ismp.actions.ISMPFileSystemManipulationWizardAction, err, The
system cannot find the file specified.*

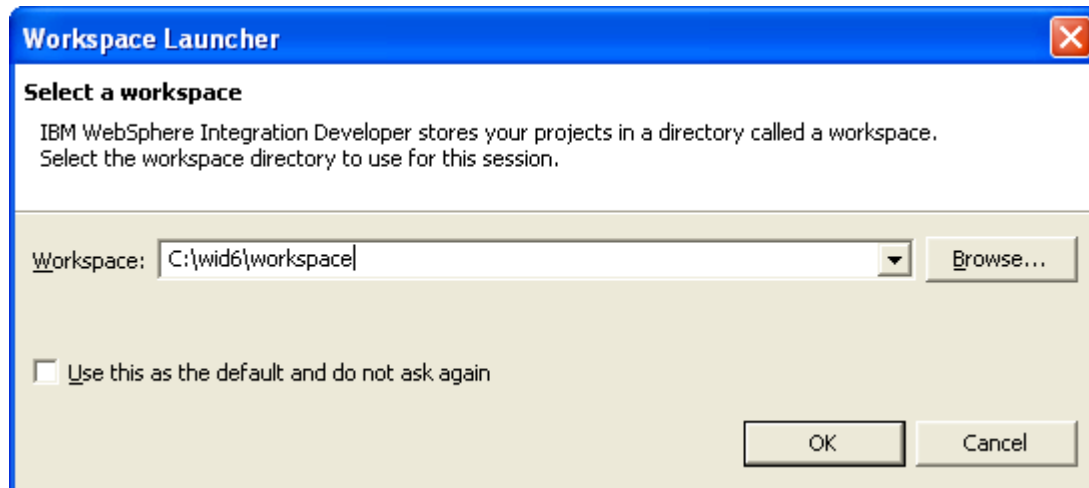
__7. Ignore the error message "system cannot find the file specified". Make sure that you can see the line with "INSTCONFSUCCESS".

Detailed Verification of the installation of WID 6.0.2

Run detailed verification on at least one machine.

__8. Launch WID using the following Windows start menu: **Start->All programs->IBM WebSphere->Integration Developer 6.0.2->WebSphere Integration Developer V6.0.2.**

__9. Change the workspace to **C:\wid6\workspace** as shown below.

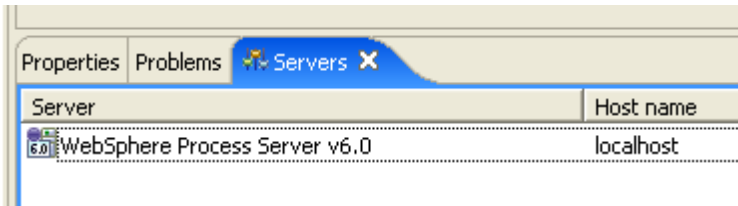


__10. Click **OK**.

__11. Close the Welcome screen.

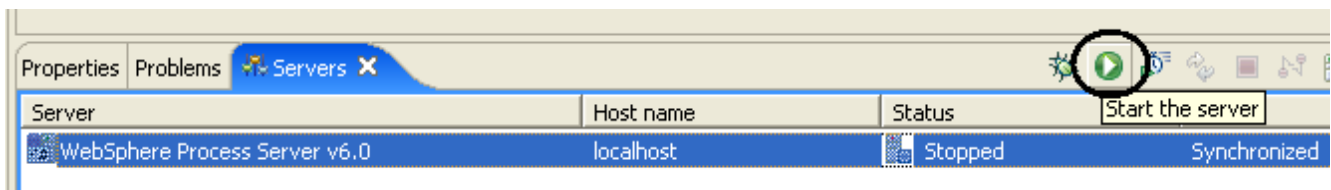


__12. At the bottom of the screen, click on the **Servers** tab.

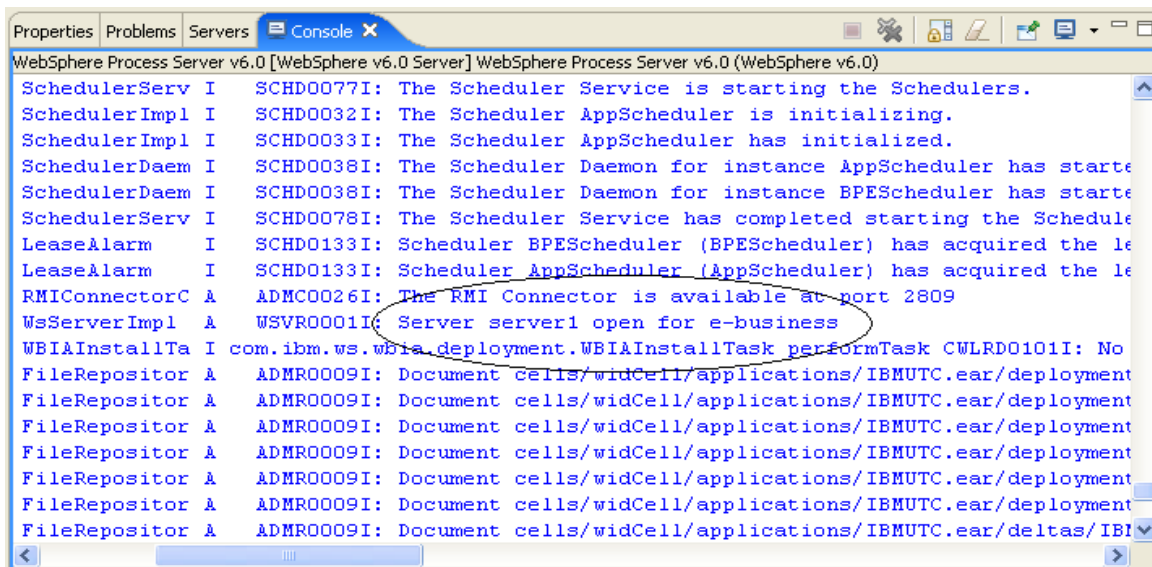


__13. Select **WebSphere Process Server v6.0**.

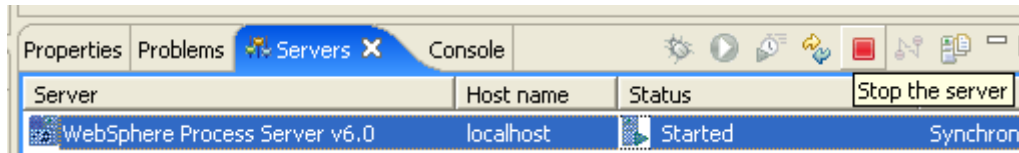
__14. Click on the **Start the server** button to start the server.



__15. In the **Console** view, system will show the startup messages. Wait for a minute or two. Make sure that you see the "**Server server1 open for e-business**" message.



__16. Click on the **Servers** tab again. Make sure that the status of the server is **Started**.



__17. Select the server and stop it by clicking on the **Stop the server** button.

__18. Wait for the server to stop.

__19. Exit WID by choosing **File->Exit** from the menu bar.

__20. Close all the open files.

Congratulations! The product has installed successfully.

Congratulations. The installation of WA1477 Mastering Service Oriented Analysis and Design Training has been completed.