

Install WebSphere Portal Server

Make sure that you have logged into the Windows machine using user ID and password of **wasadmin**.

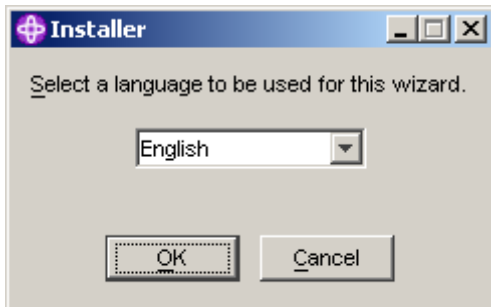
Locate the CD Image

Using a file explorer, go to C:\softwareImage. Locate these WebSphere Portal Server image folders.

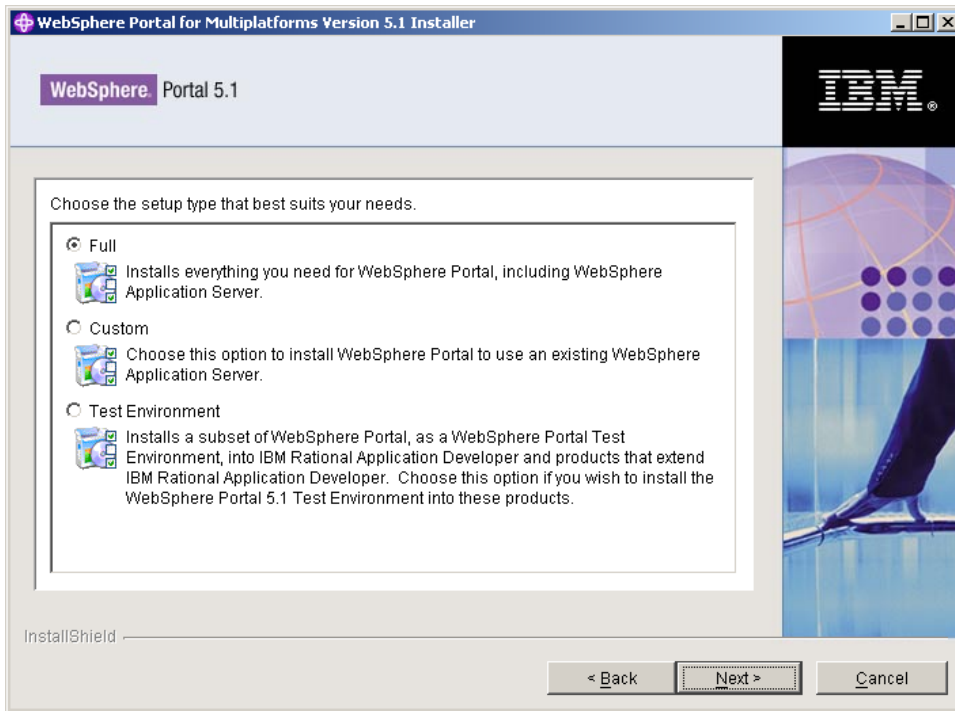
Directory	CD Label
C814EML	WebSphere Portal Setup CD
1-1	BI Server Foundation For Windows
4-1	WAS Archive Install for Windows
C811IML	Portal Server Archive Install (5-1)
C811LML	Portal Server Archive Install (5-3)

Begin Installation

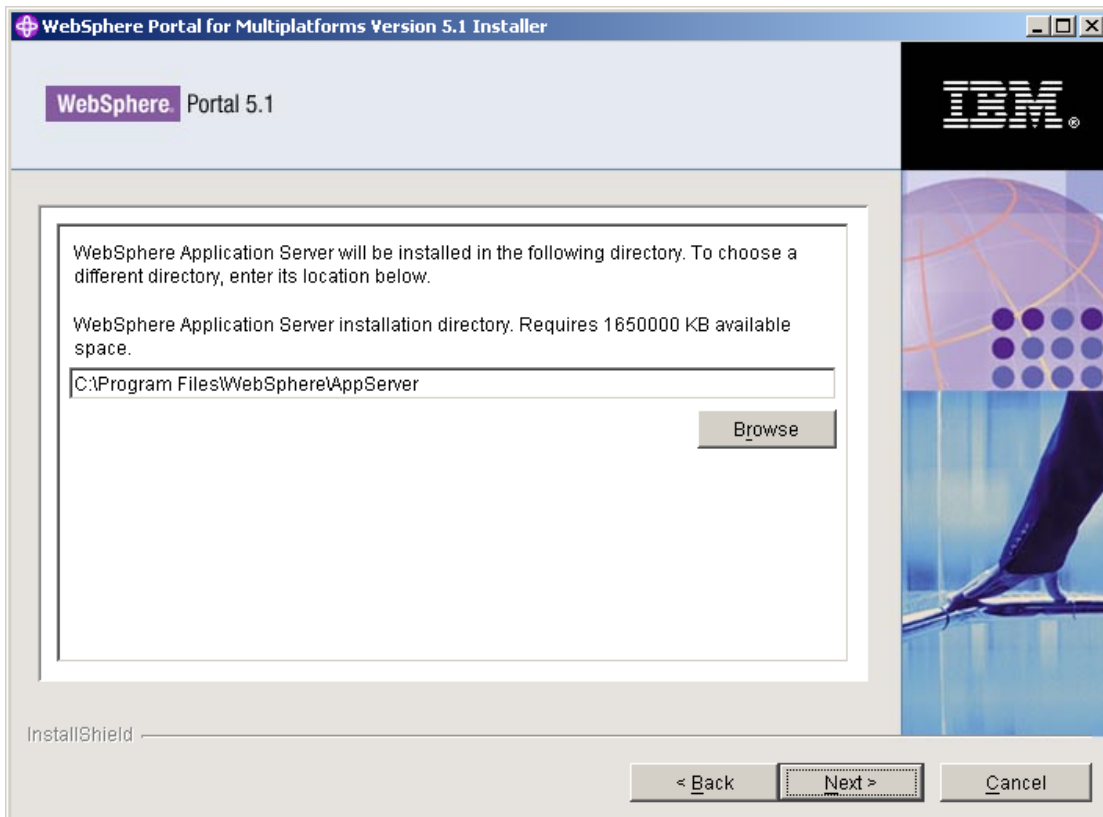
From the **C814EML** folder, run install.bat.



Accept English as the language. Press OK, then Next and accept the license agreement. Press Next



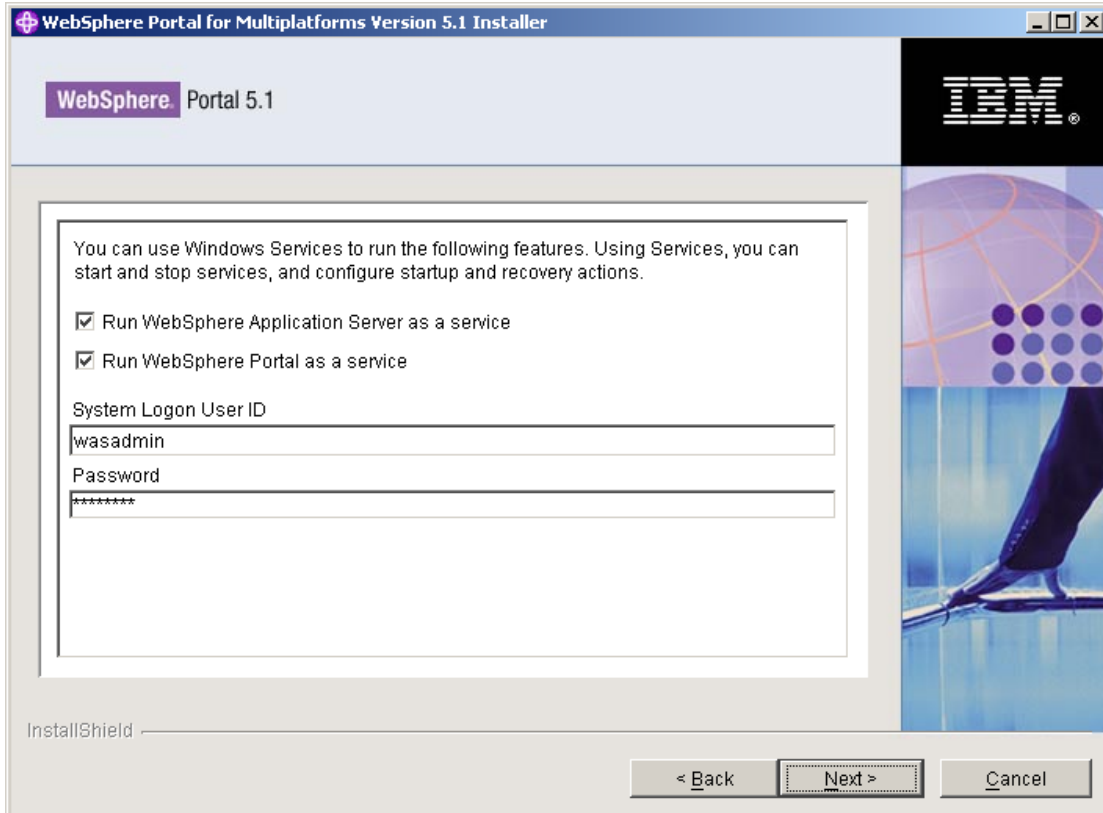
Choose the **Full** Install option and click on **Next**. Accept the default location for the application server installation and press Next.



Accept default values for Node Name and Host Name, and press Next.

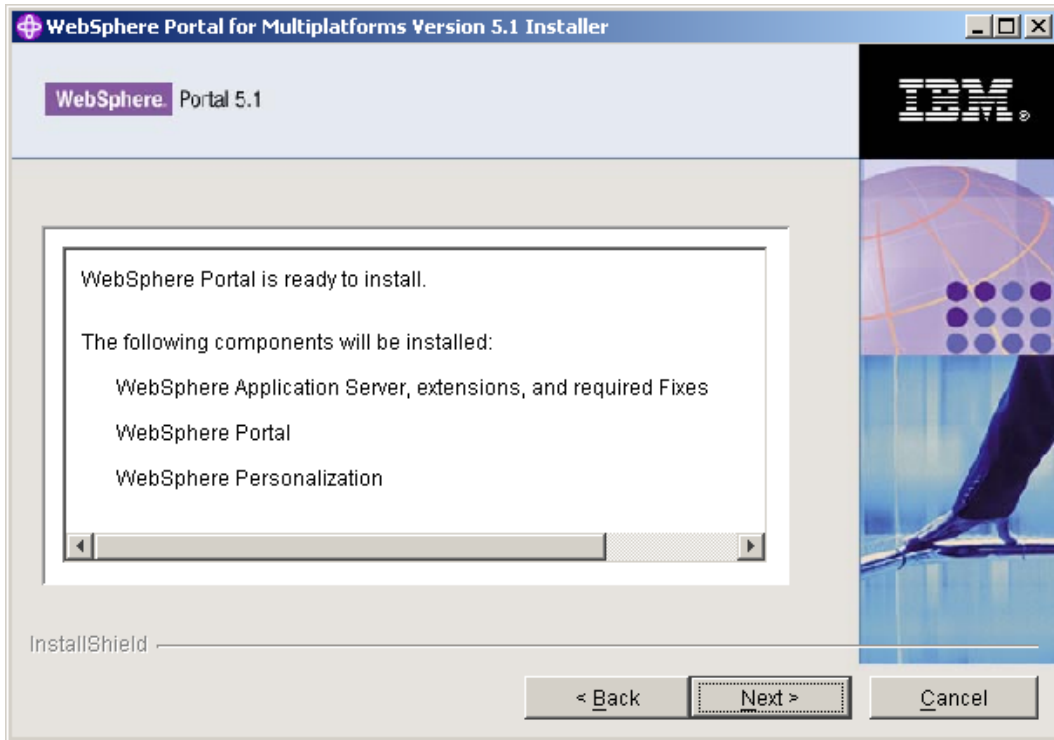
Accept default installation location for portal server and press Next.

Ensure that the check boxes for running application server and portal server as services are checked. Enter user ID and password as wasadmin and press Next.



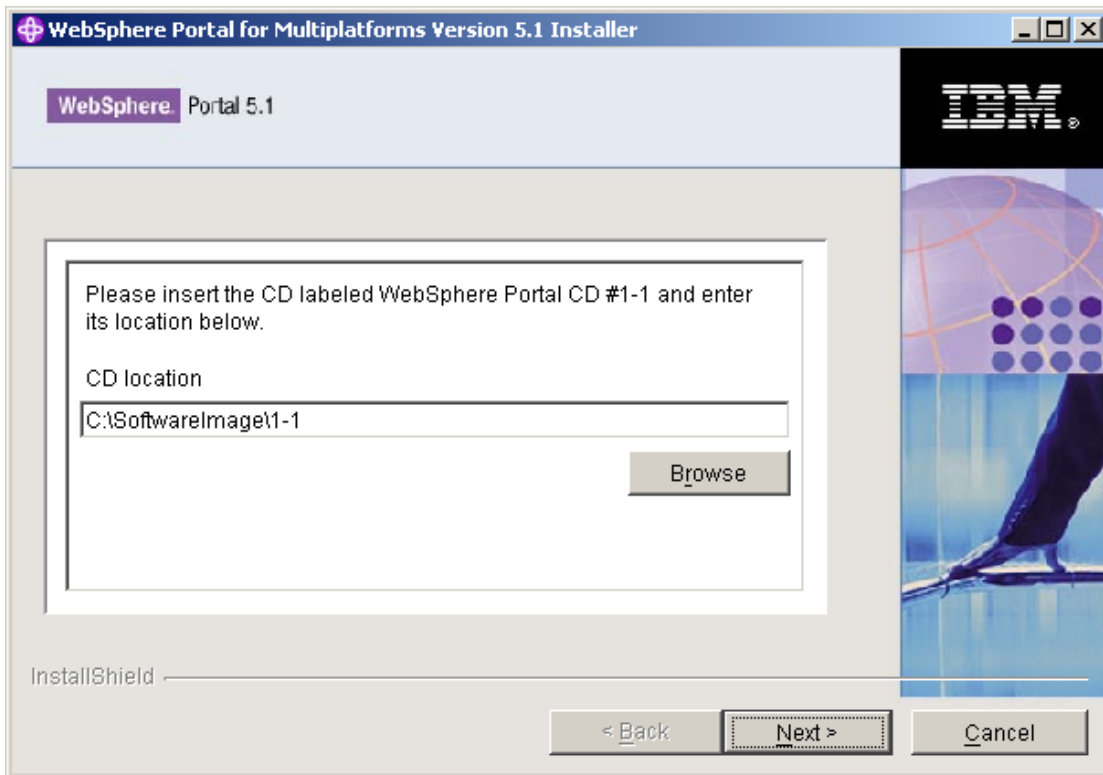
For the WebSphere portal administrator, enter the userID and password as wpsadmin, and press Next.

Verify that you see the screen as shown below.



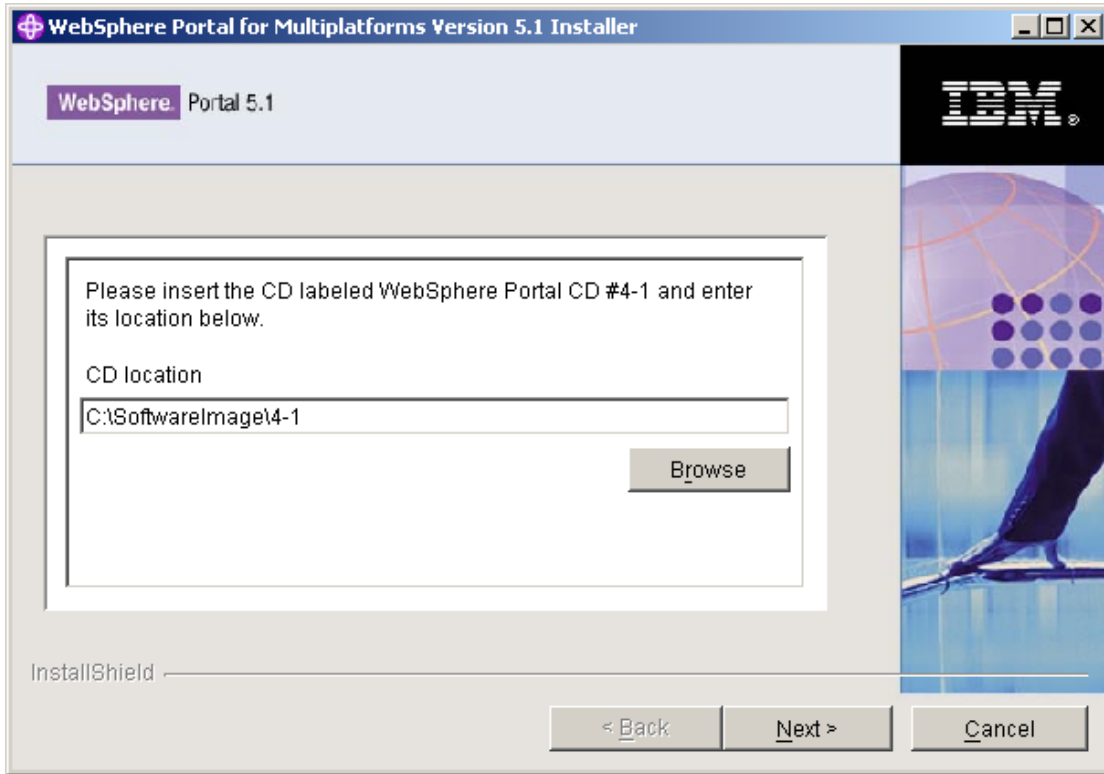
Press Next to start installation.

After few minutes, the installation wizard will ask for the location of the software in the folder C:\SoftwareImage\1-1

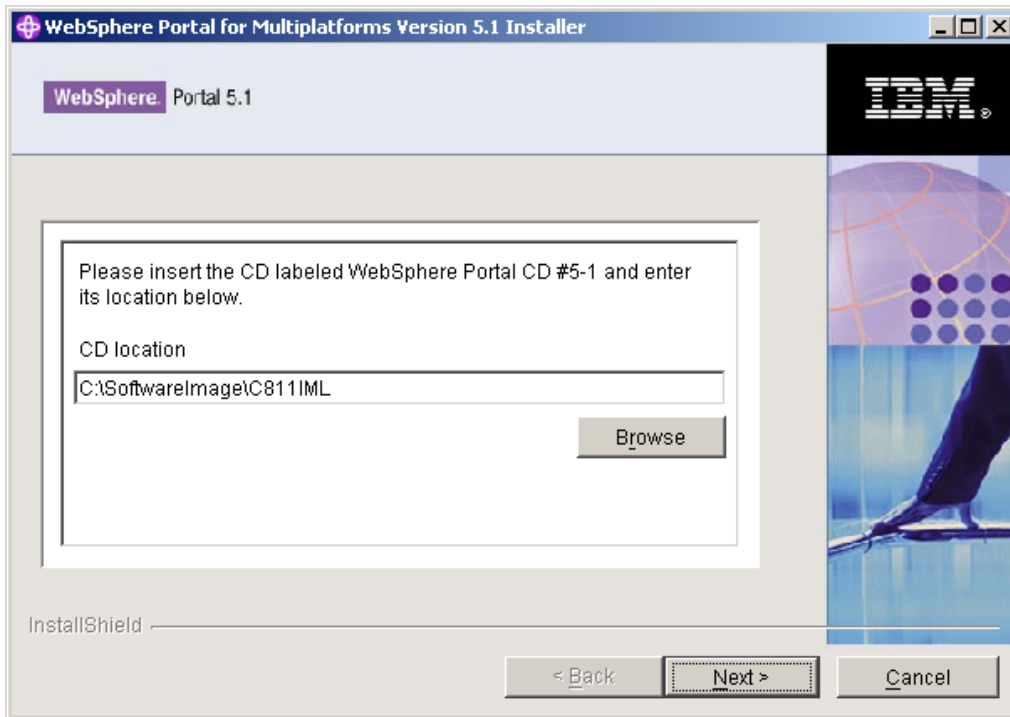


Press Next

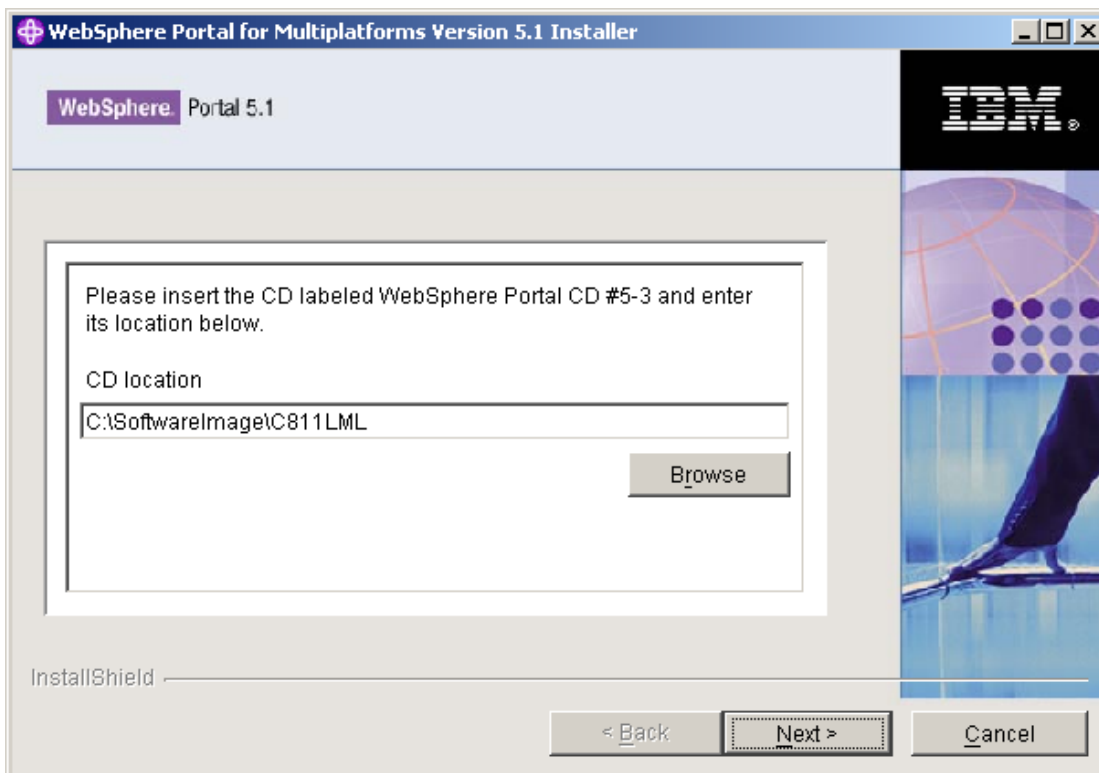
The installation wizard then expects the location of C:\SoftwareImage\4-1 folder to continue installation. Press the browse button to navigate to the C:\SoftwareImage\4-1 folder and press Next.



When asked for the CD location again, click the browse button and navigate to C:\SoftwareImage\C811IML folder and press Next.

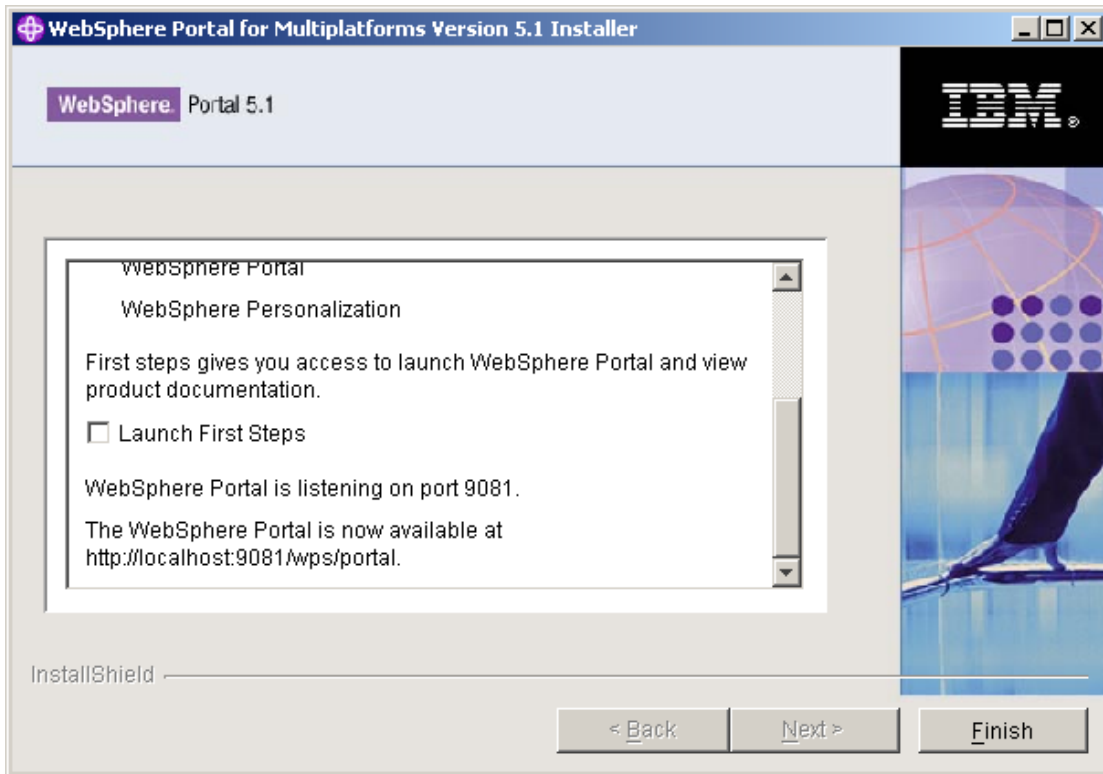


When asked for the CD location, click the browse button and navigate to C:\SoftwareImage\C811LML folder and press Next.



When the installation is completed, you should see a screen as shown below. Scroll down

and uncheck **Launch First Steps** checkbox, click on Finish.



Verify Installation

Open a DOS command prompt. Change directory to C:\Program Files\WebSphere\AppServer\bin. Run the command:

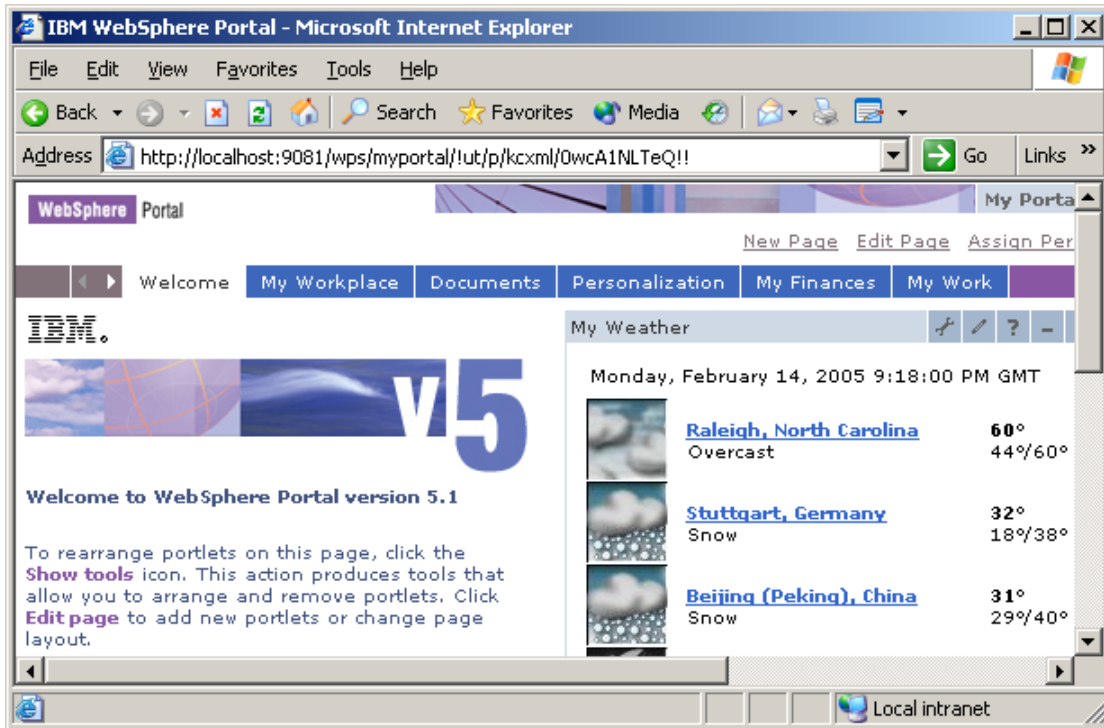
```
serverStatus -all
```

You should see the output below.

```
ADMU0509I: The Application Server "server1" cannot be reached. It appears to be stopped.
```

```
ADMU0508I: The Application Server "WebSphere_Portal" is STARTED
```

Open a browser window. Enter the URL <http://localhost:9081/wps/portal/>. Click on the Log in link on the top right hand corner. Make sure that you can login using the user ID and password wpsadmin. You should see a welcome screen as shown below



Log out by clicking on the Log out button on the top right hand side.

Stopping and Starting Portal Server

Portal server runs as an application server called WebSphere_Portal. Use a DOS command prompt to run the following commands from the C:\Program Files\WebSphere\AppServer\bin directory.

```
stopServer WebSphere_Portal  
startServer WebSphere_Portal
```