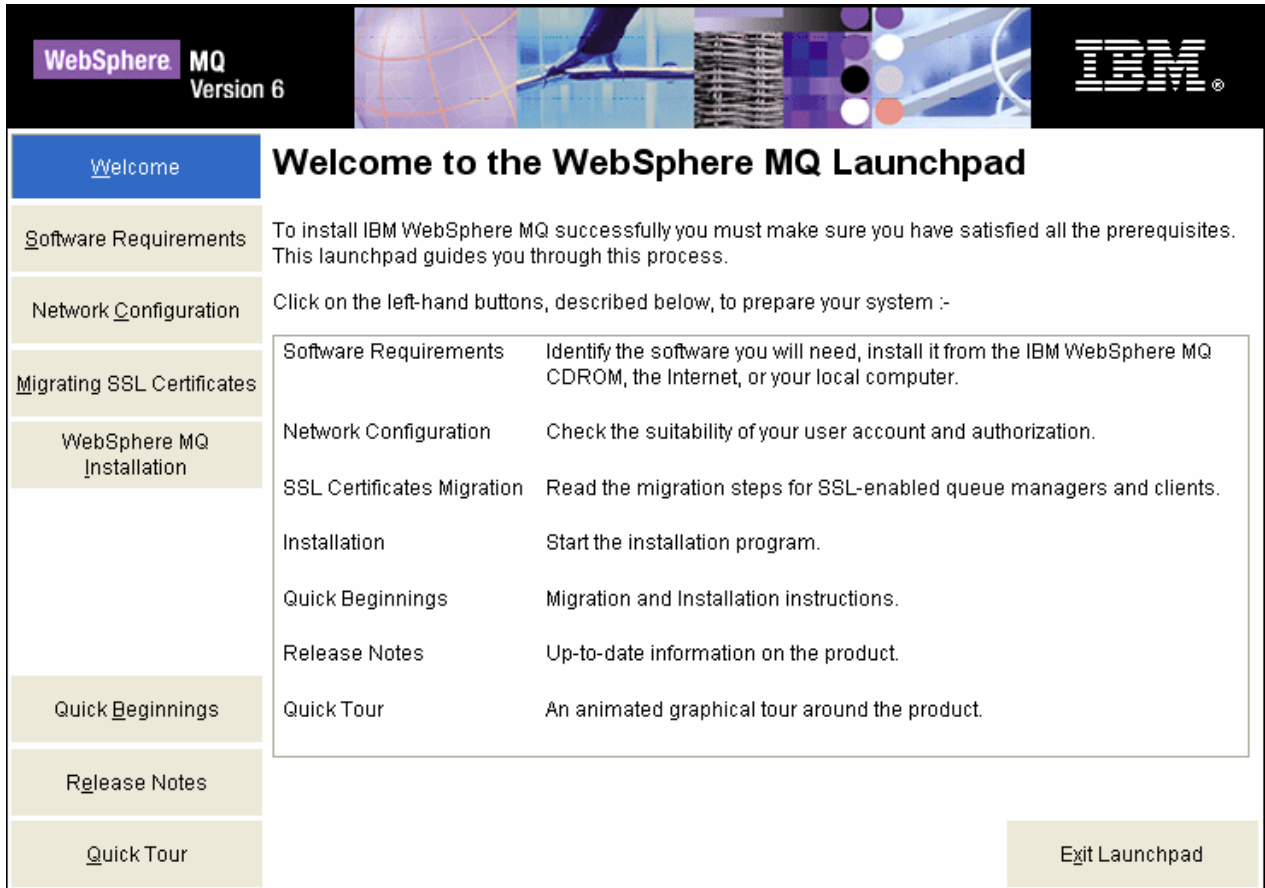


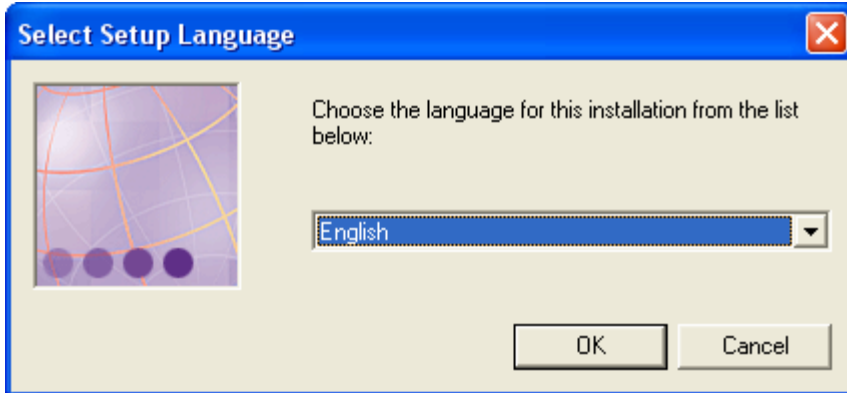
WebSphere MQ v6 Setup Guide

1. Create the folder `c:\webspheremqv6` and unzip the **WMQv600Trial-x86_win.zip** file to that folder.
2. Open the `c:\webspheremqv6` folder and double-click on the **Setup.exe** icon. The **WebSphere MQ Launchpad** should open up.

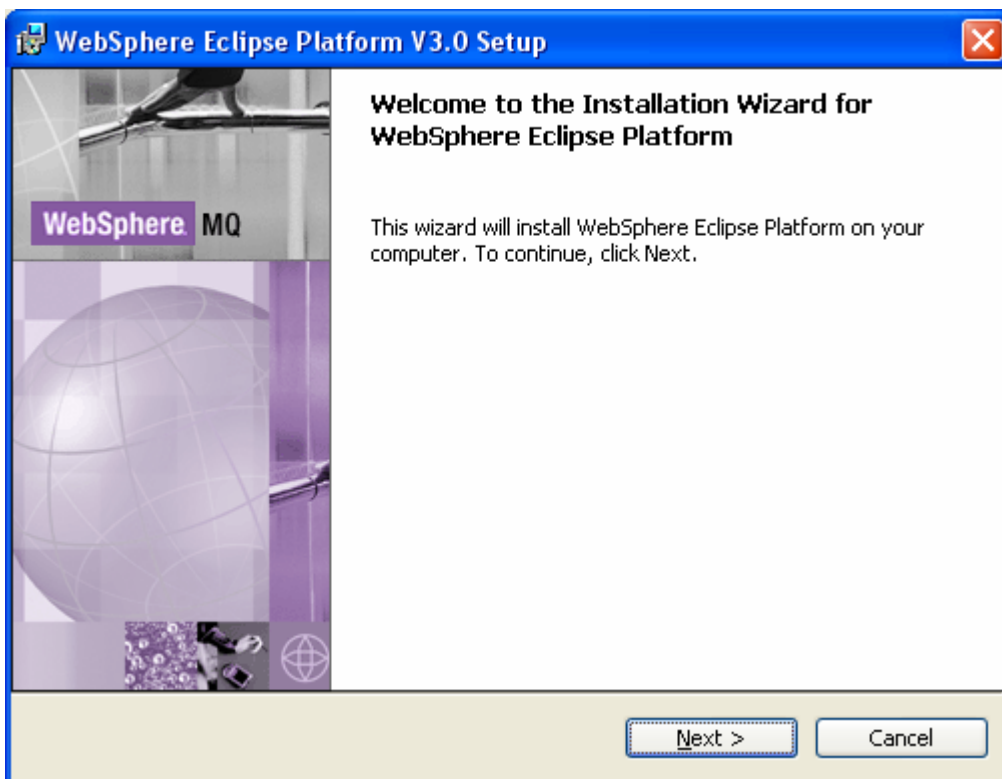


3. Click on **Software Requirements** in the navigation bar. You should see a red **X** and the message **Not Installed** next to **WebSphere Eclipse Platform Version 3.0.1**.
4. To install **WebSphere Eclipse Platform Version 3.0.1**, expand it by clicking on the **+** sign next to it.
5. Click on the **CD-ROM** button.
6. Select English in the **Select Setup Language** pop-up window and click **OK**.

WebSphere MQ v6 Setup Guide



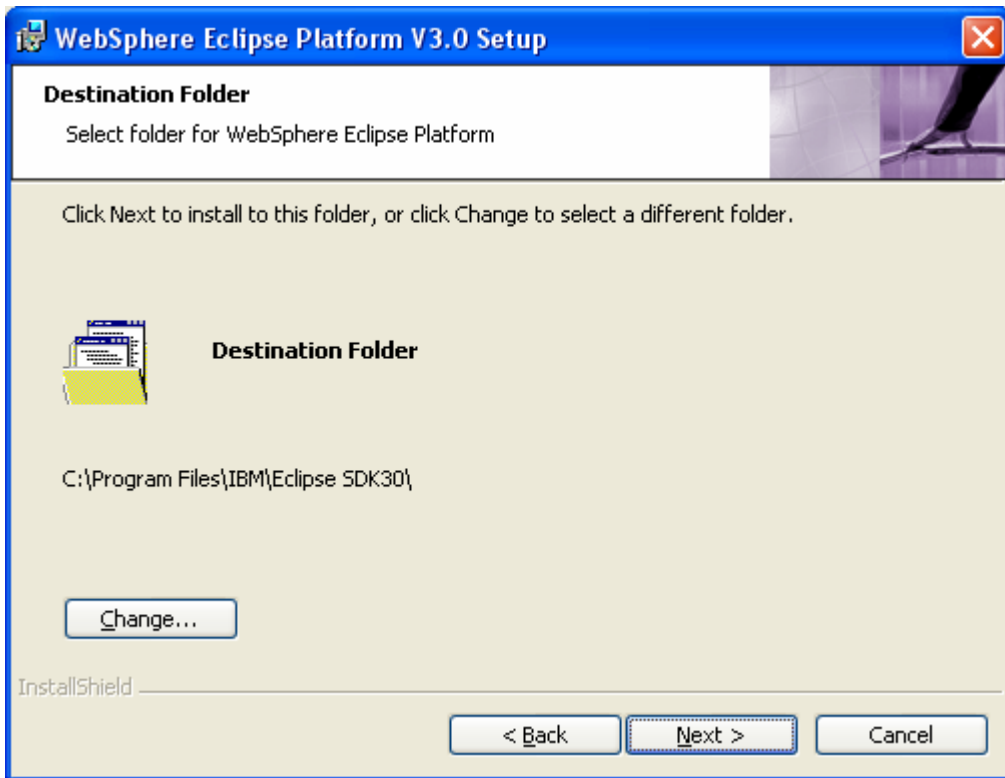
__7. Click **Next** in the **WebSphere Eclipse Platform Version 3.0 Setup** window.



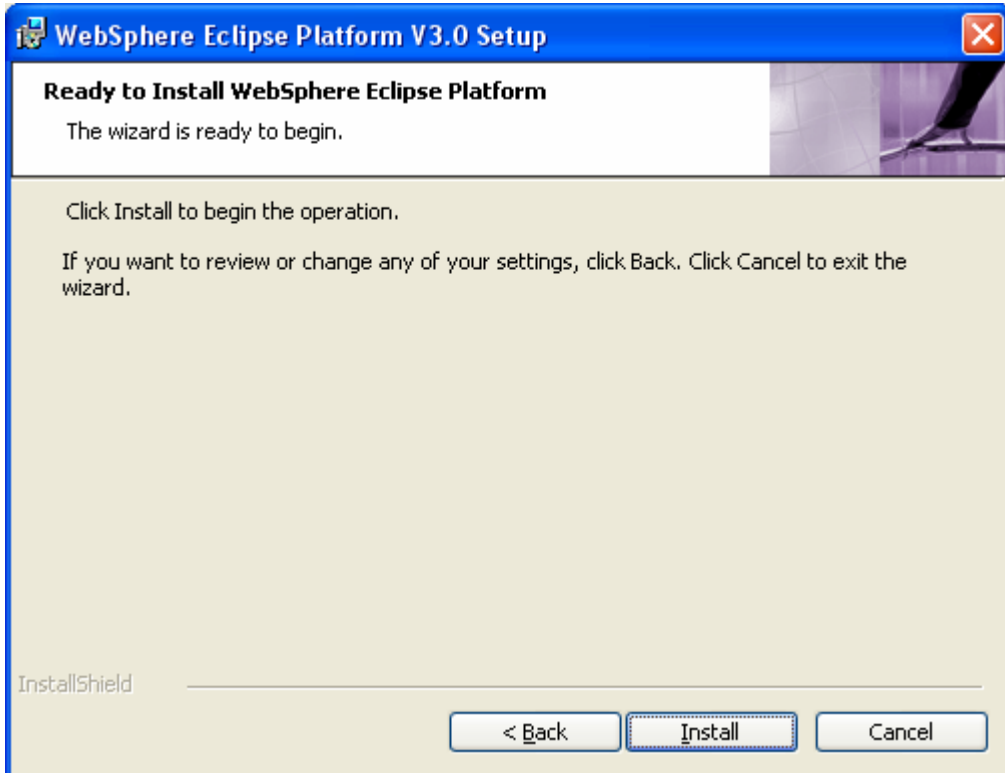
__8. Accept the license agreement and press **Next**.

__9. Press **Next** again.

WebSphere MQ v6 Setup Guide

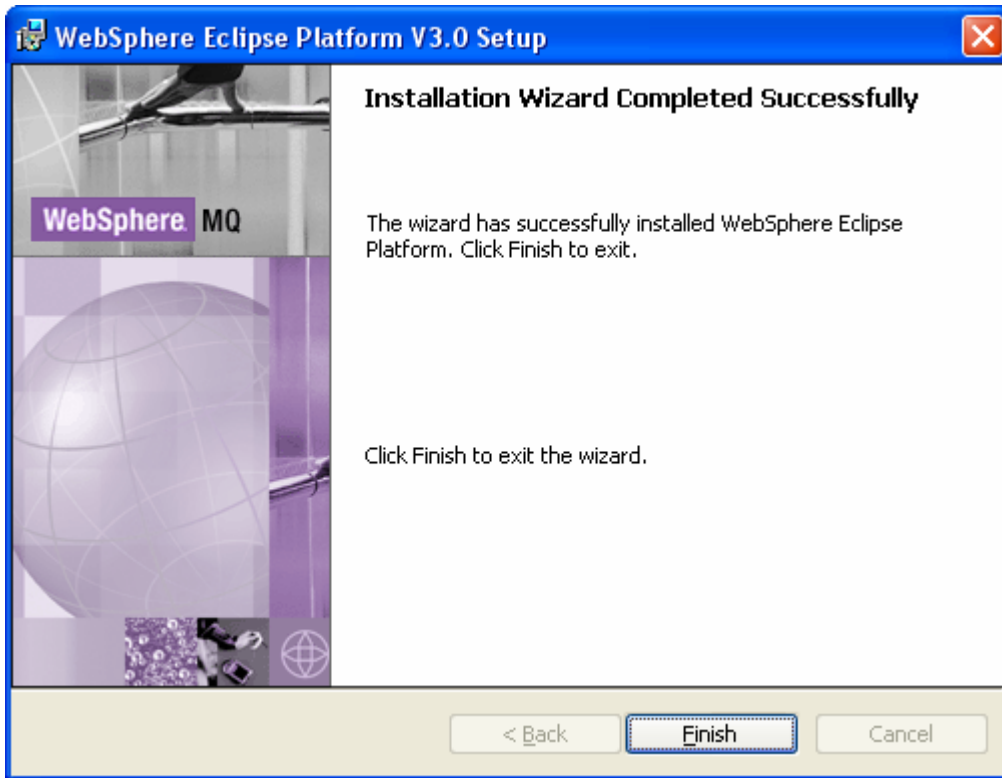


__10. Press **Install**.



WebSphere MQ v6 Setup Guide

- __11. The installation will take a few minutes after which you will see the following screen. Click **Finish**.



- __12. Now that you've installed the pre-requisite software for installing WebSphere MQ, navigate back to the **WebSphere MQ Launchpad** and click on **Refresh**. You should now see a green checkmark and the message **OK** next to **WebSphere Eclipse Platform Version 3.0.1** indicating that Eclipse has been successfully installed.

WebSphere MQ v6 Setup Guide

The screenshot shows the 'Software Requirements for WebSphere MQ on Windows XP' page. The left sidebar contains navigation links: Welcome, Software Requirements (highlighted), Network Configuration, Migrating SSL Certificates, WebSphere MQ Installation, Quick Beginnings, Release Notes, and Quick Tour. The main content area has the IBM logo at the top right. Below the title, a text box states: 'The following software is required for a full install. If you are only installing selected components on this system, refer to the installation instructions for prerequisite software.' Below this, a note says: 'Click on the plus (+) buttons below to expand the details on each item's status.' Two items are listed: 'Microsoft Windows XP (R) + SP1' and 'WebSphere Eclipse Platform Version 3.0.1', both with a plus icon and a green checkmark followed by 'OK'. At the bottom, there is a 'Refresh' button and an 'Exit Launchpad' button. A note at the bottom left says: 'Click on the Refresh button, if the status of the above items has changed.'

__13. Now proceed to installing WebSphere MQ by clicking on **WebSphere MQ Installation**.

__14. Click on **Launch IBM WebSphere MQ Installer**.

WebSphere MQ v6 Setup Guide

WebSphere MQ
Version 6

IBM

[Welcome](#)

[Software Requirements](#)

[Network Configuration](#)

[Migrating SSL Certificates](#)

WebSphere MQ Installation

[Quick Beginnings](#)

[Release Notes](#)

[Quick Tour](#)

WebSphere MQ Installation

Pre-Installation Status

Software Requirements:

All prerequisite software has been installed and is at the required level.

Network Configuration Steps:

WebSphere MQ requires this information in order to function correctly. Click on 'More Information' button in the Network Configuration panel to find out what to ask your domain administrator, or open the Quick Beginnings for more information.

SSL Certificate Migration Steps:

No preparatory actions are required.

Select installation language.

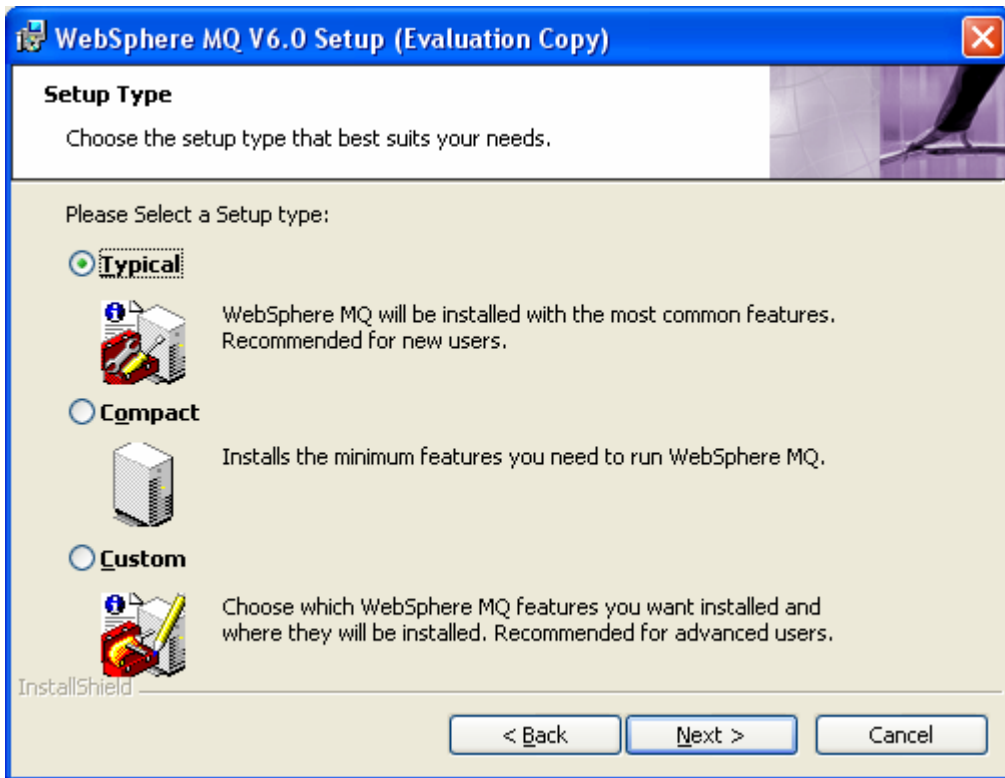
[Launch IBM WebSphere MQ Installer](#)

[Exit Launchpad](#)

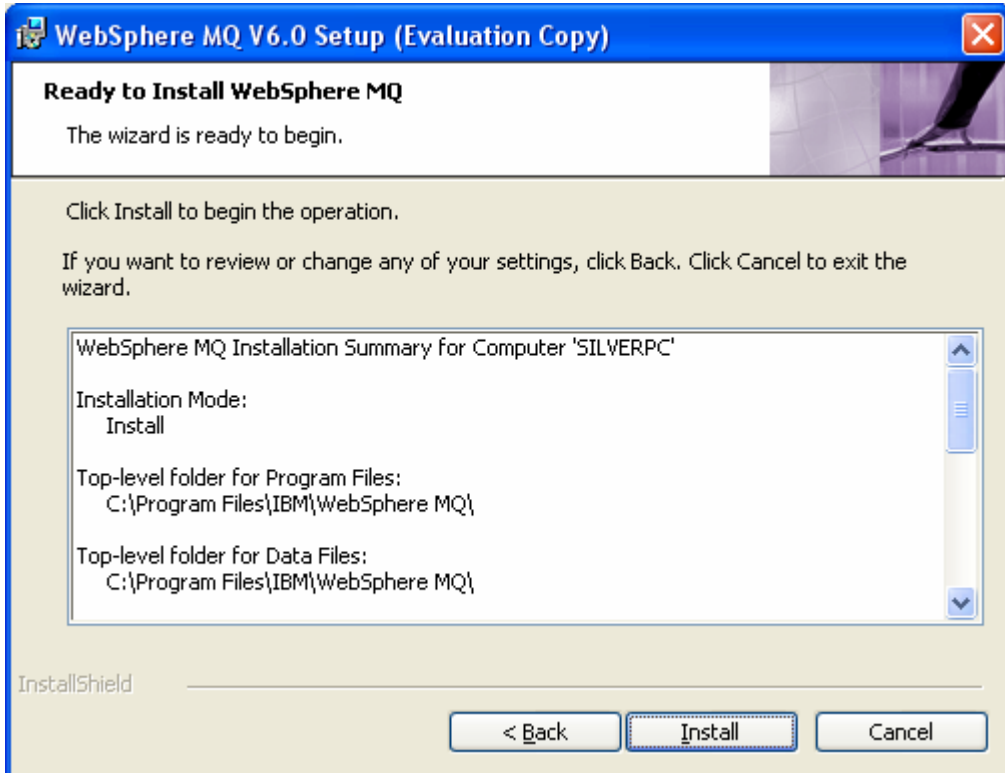
__15. Accept the license agreement and press **Next**.

__16. Make sure **Typical** installation is selected and press **Next**.

WebSphere MQ v6 Setup Guide

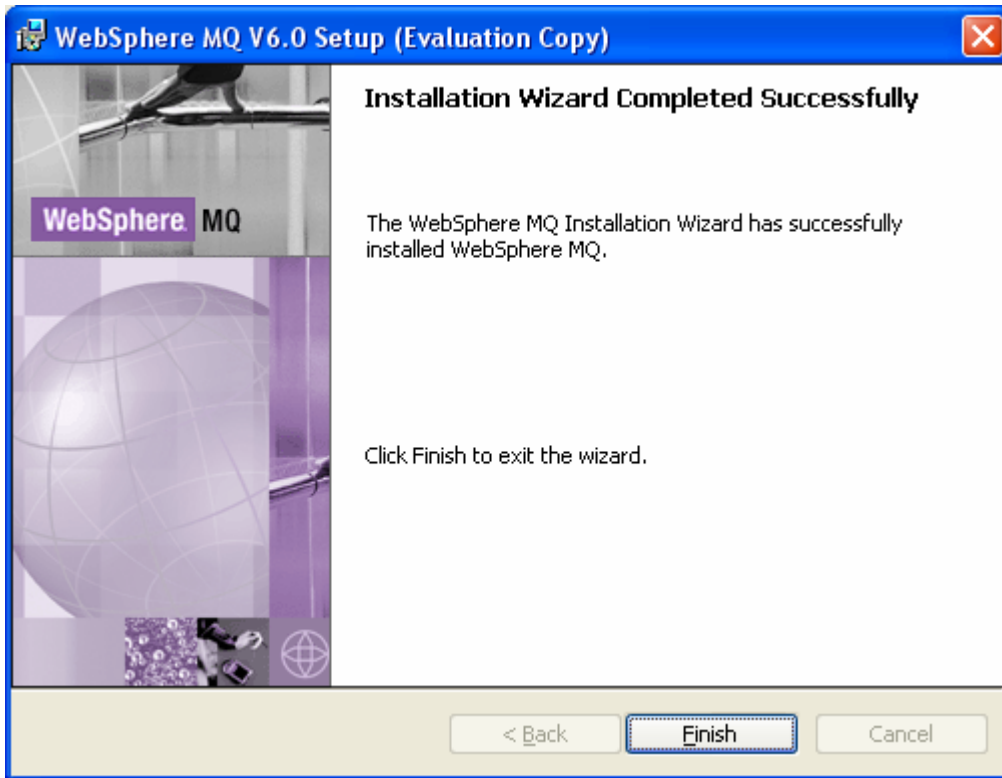


__17. Press **Install**.



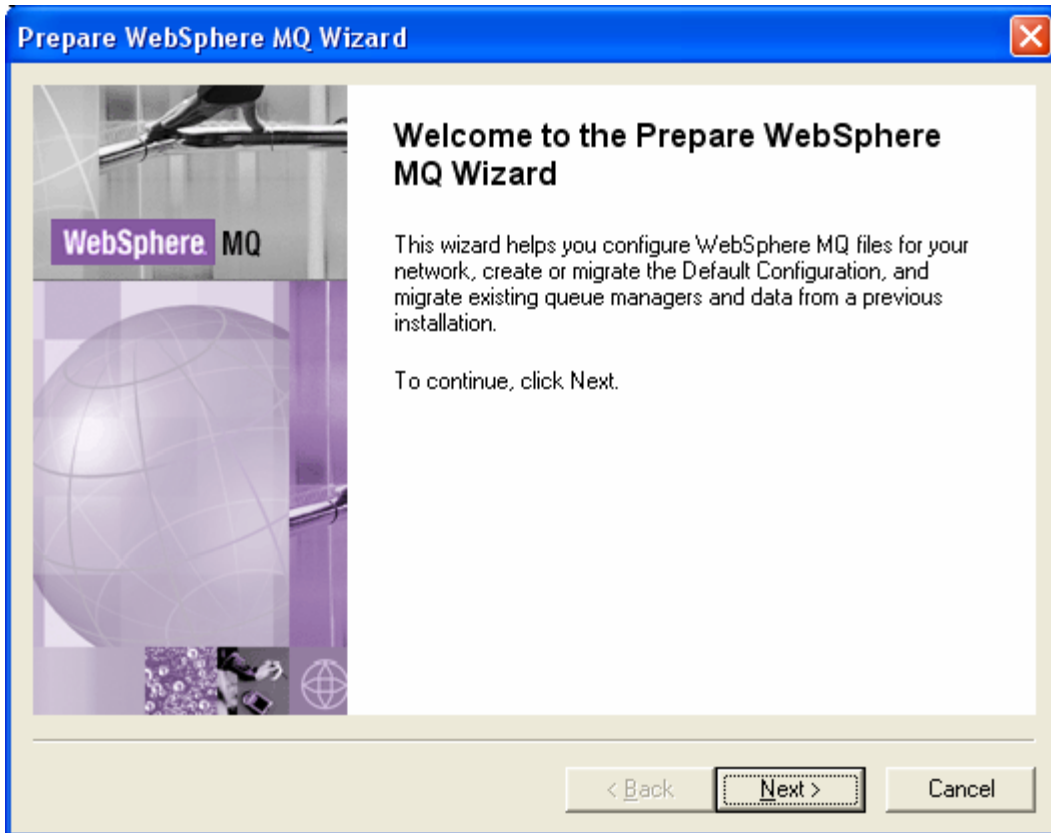
WebSphere MQ v6 Setup Guide

- __18. The installation will take several minutes to complete after which you will see the following screen. Click **Finish**.



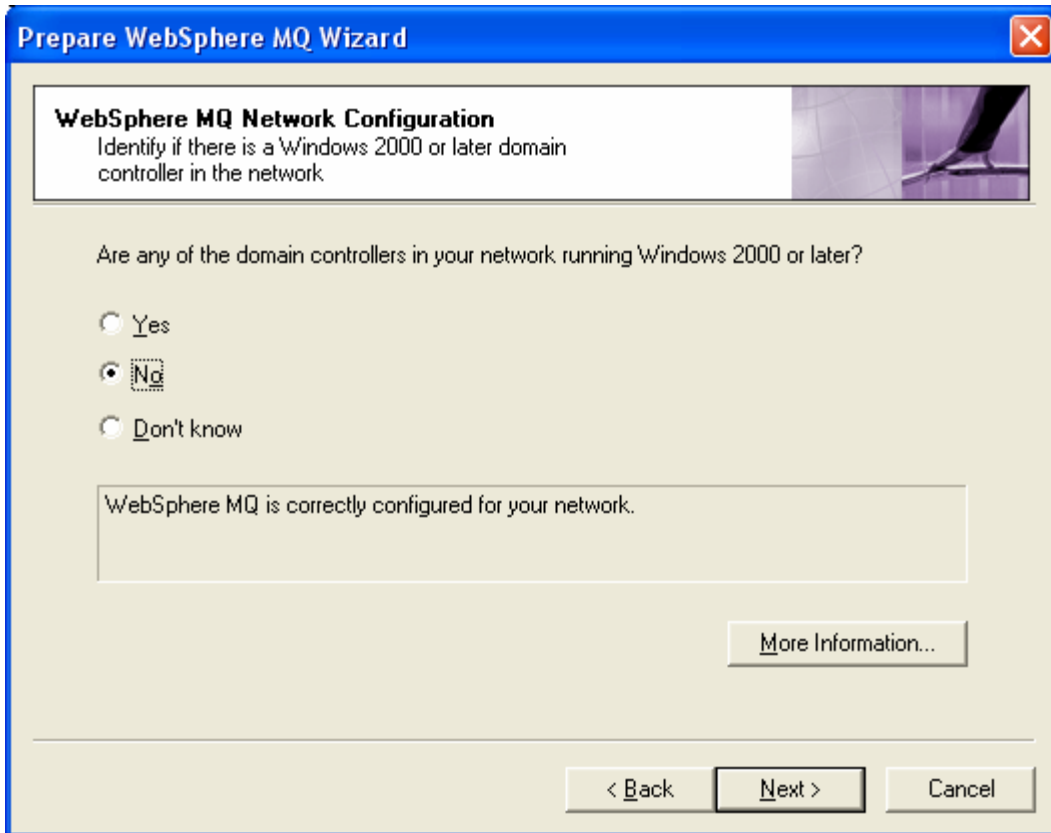
- __19. The installation program will open up the **WebSphere MQ Wizard** for configuring WebSphere MQ. Press **Next**.

WebSphere MQ v6 Setup Guide



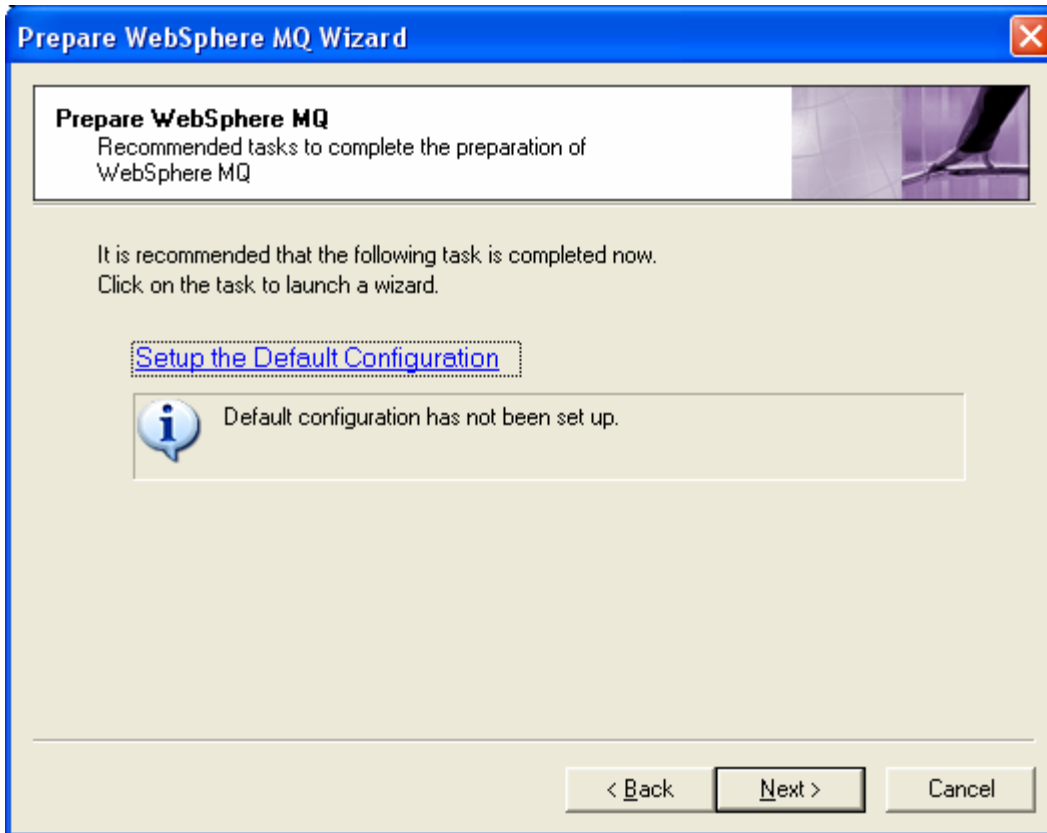
- __20. Answer **No** to the question **Are any of the domain controllers in your network running Windows 2000 or later?**. Press **Next**.

WebSphere MQ v6 Setup Guide



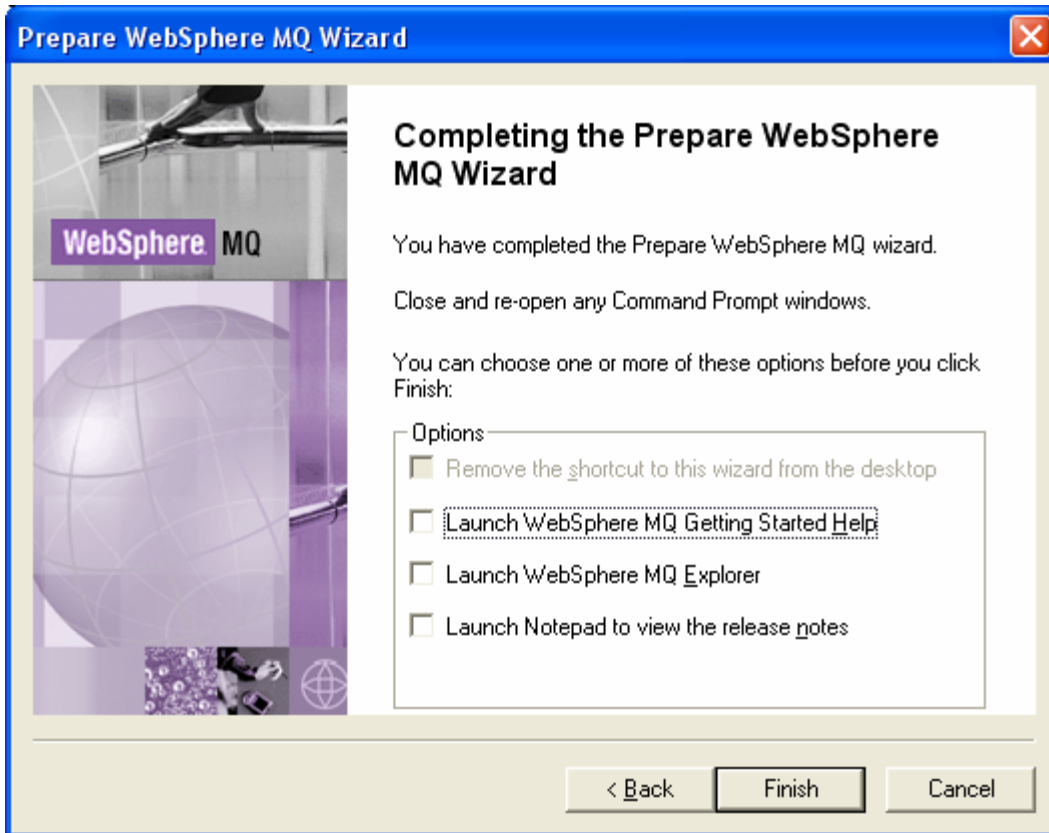
__21. Press **Next** again.

WebSphere MQ v6 Setup Guide



__22. Uncheck all the options and press **Finish**.

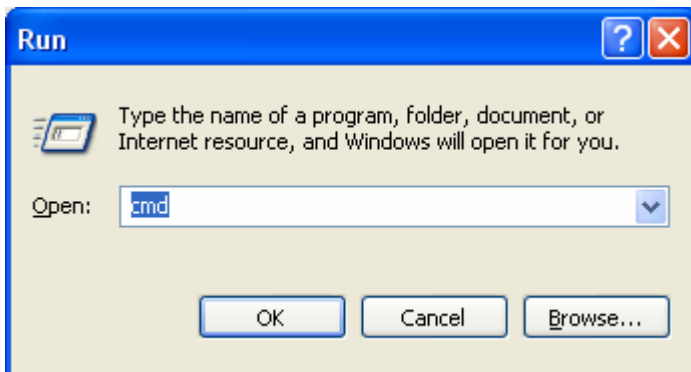
WebSphere MQ v6 Setup Guide



- __23. You should see an icon in your system tray with a green icon which indicates that WebSphere MQ is running.



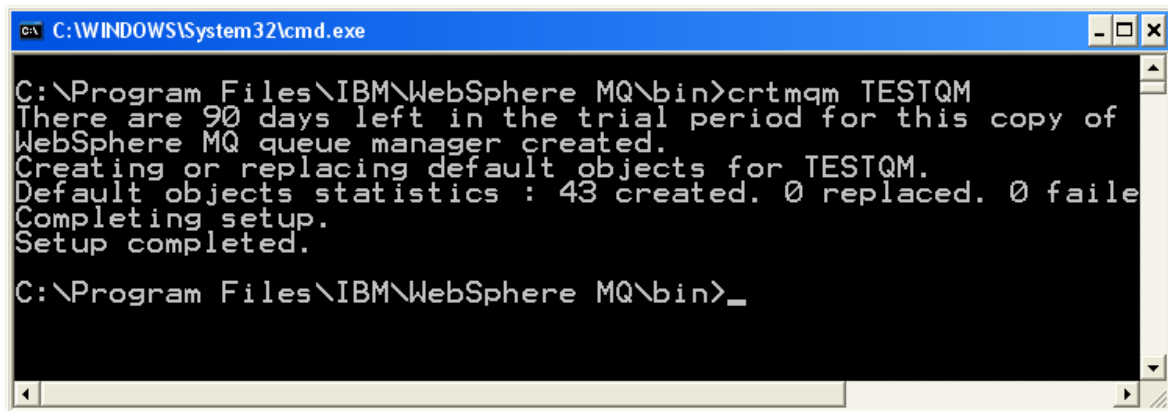
- __24. To further verify the installation was successful, open a command prompt by clicking on **Start -> Run**. Type **cmd** into the **Run** window.



- __25. Change directories to the C:\Program Files\IBM\WebSphere MQ\bin directory by typing `cd C:\Program Files\IBM\WebSphere MQ\bin`.

WebSphere MQ v6 Setup Guide

__26. Type `crtmqm TESTQM`. You should see the following message.



```
C:\WINDOWS\System32\cmd.exe

C:\Program Files\IBM\WebSphere MQ\bin>crtmqm TESTQM
There are 90 days left in the trial period for this copy of
WebSphere MQ queue manager created.
Creating or replacing default objects for TESTQM.
Default objects statistics : 43 created. 0 replaced. 0 failed
Completing setup.
Setup completed.

C:\Program Files\IBM\WebSphere MQ\bin>_
```

__27. Congratulations. You have successfully installed WebSphere MQ.